



THIRD ANNUAL REPORT
of the
FLORIDA STATE RACING
COMMISSION

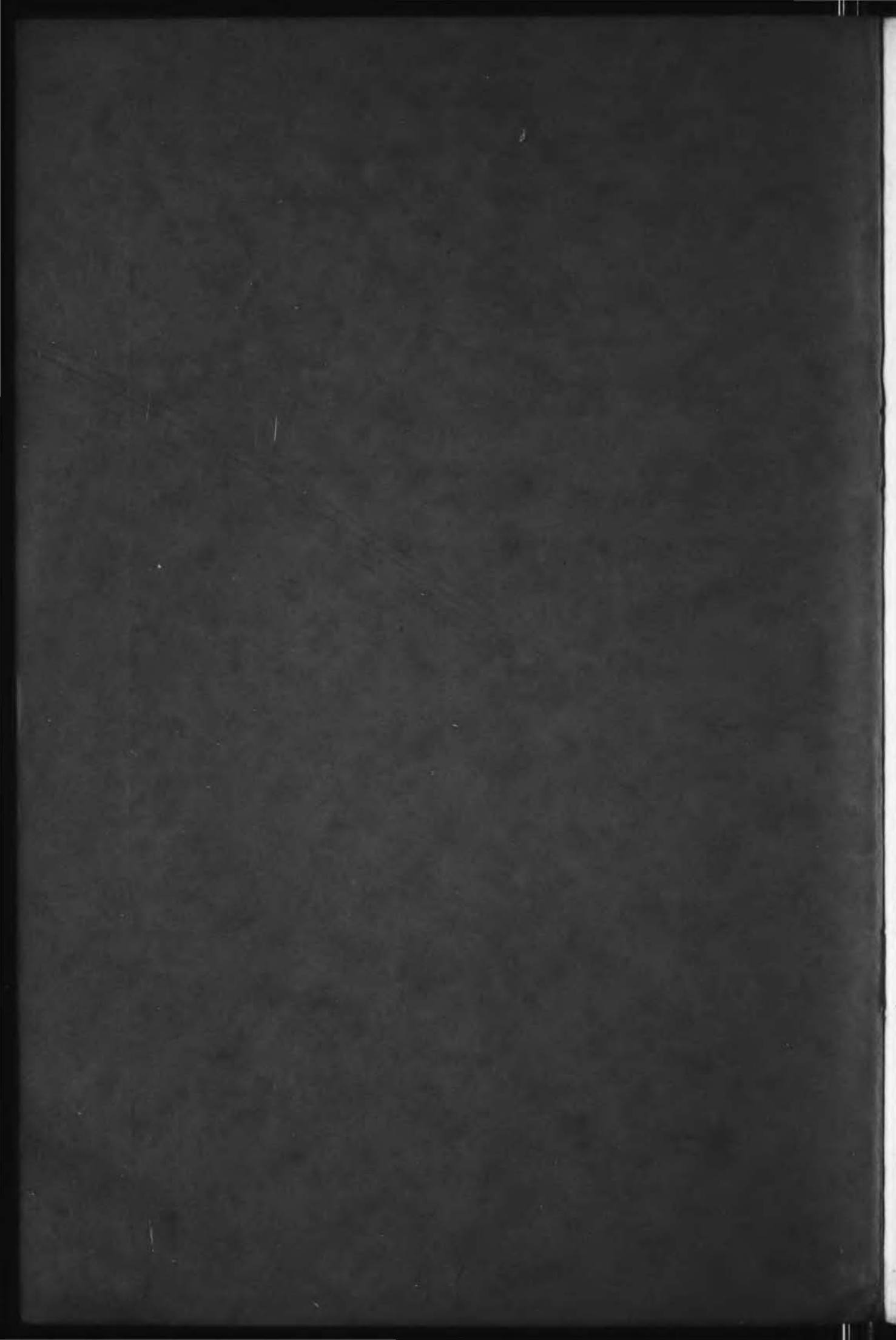
RESEARCH COPY
DO NOT REMOVE FROM
FILES, OR MUTILATE
FLORIDA STATE CHAMBER OF COMMERCE

FISCAL YEAR ENDING JUNE 30th, 1934

F351.76s
W131

3rd

FLORIDA STATE LIBRARY



THIRD ANNUAL REPORT

OF THE FLORIDA STATE RACING COMMISSION

July 1st. 1934.

His Excellency David Sholtz,
Governor of the State of Florida,
Tallahassee, Florida.

The Florida State Racing Commission respectfully submits herewith its annual report for the third fiscal year ending June 30th, 1934.

The personnel of the Racing Commission for the third year was as follows:

Walter H. Donovan,	1st Congressional District
Frank E. Thompson,	2nd Congressional District
Thomas A. Johnson,	3rd Congressional District
B. F. Paty,	4th Congressional District
Roger H. West,	State at Large.

B. F. Paty served as Chairman and Walter H. Donovan as Secretary during this period.

During the last fiscal year meetings of the Commission were held on the following dates and places:

August 14th, 1933—Tallahassee.
August 15th, 1933—Tallahassee.
August 24th, 1933—Tallahassee.
October 5th, 1933—Miami.
November 6th, 1933—St. Petersburg.
December 12th, 1933—West Palm Beach.
December 22nd, 1933—Tallahassee.
January 22nd, 1934—Miami.
January 23rd, 1934—Miami.

3RD ANNUAL REPORT OF FLORIDA STATE RACING COMMISSION

February 6th, 1934—Miami.
February 20th, 1934—Miami.
March 9th, 1934—Miami.
March 16th, 1934—Miami.
March 26th-27th, 1934—Miami.
April 10th, 1934—Miami.
April 17th, 1934—Tallahassee.

A branch office was opened by the Commission in Miami on November 20th, 1933, from which office the Commission's business was conducted during the racing season and up to April 10th, 1934, on which date the Miami office was closed and all records and supplies were shipped to the Tallahassee office.

The records of the year just closed, and contained in this report, show a marked increase in revenue to the State from the operation of horse and dog tracks, the net revenue being \$934,678.04 as against \$705,601.64 for the 1932-33 season; an increase of 32.46%.

During the past season the Commission inaugurated and waged a campaign to eliminate the practice of doping or stimulating race horses. Having no precedent by which to go, the Commission approached the problem from the angle of prevention, providing also a method of detection. To this end there was established a corps of investigators, assigning one to each horse for a period of from one to three hours prior to its race. In addition the saliva test was established as a means of identifying stimulants administered to a horse. This was the first time the saliva test had been used in America and was of necessity in its early stage of development. We believe the distance traveled since the inauguration of this campaign and the results obtained have fully justified the necessary increased expenditures by the Commission. Rules against doping, providing for adequate supervision, have since been passed by every racing commission throughout the country.

3RD ANNUAL REPORT OF FLORIDA STATE RACING COMMISSION

The Commission took steps to cover every vulnerable spot that tended to reduce a full measure of protection to the public and the associations, by providing additional inspectors in each instance. This policy, together with the effort to eliminate stimulation of horses and an addition of fifty-nine racing days over last year's schedule, caused a considerable increase in personnel, resulting in a higher cost of operation. The Commission believes that under the Racing Act the public and operators are entitled to full and complete protection and proper expense should not be spared to this end.

The Commission invited racing commissions of other states to Miami for a conference in January, looking toward a closer relationship which would prove mutually beneficial. As a result of this invitation ten states were represented and the National Association of Racing Commissioners was formed. Since that meeting every state racing commission now existing has become a member of the Association. The second annual meeting will be held in Miami this winter and mutual problems discussed.

The Commission desires to recommend that consideration be given the Racing Act at the next session of the Legislature to the end that the Act may be strengthened and clarified by amendments. We particularly refer to the ambiguity of Sections 5 and 9. We recommend more requirements of an applicant for a permit as now provided in Section 2. We recommend Section 4 be amended extending the period in which racing is permitted from April 1st to May 1st. We recommend Section 9-B be amended to either eliminate completely the occupational tax, or if retained effect a more equitable assessment; i. e., a sliding scale should be provided ranging from a lesser amount required of those earning \$5.00 a day or under, to a greater amount for those earning larger salaries.

3RD ANNUAL REPORT OF FLORIDA STATE RACING COMMISSION

The Commission is pleased to report that during the past racing season the various associations licensed to conduct race tracks under the laws of the State manifested a desire to fully cooperate with the Commission, its agents and employees, in an effort to have racing conducted in this State as required by law.

The following table gives the names of various racing associations that operated race tracks during the past racing season under licenses from this Commission, together with the number of employees and amount of payrolls in each instance:

Names	No. of Employees	Payrolls
Miami Jockey Club, Inc.....	675	\$ 221,278.68
Gables Racing Association, Inc.....	437	146,352.42
Tampa Shores Jockey Club, Inc.....	250	17,624.76
West Flagler Amusement Company, Inc.	176	91,761.87
Biscayne Kennel Club, Inc.....	159	100,938.48
Miami Beach Kennel Club, Inc.....	162	84,231.00
Clay County Kennel Club, Inc.....	118	66,009.00
St. Petersburg Kennel Club, Inc.....	85	76,325.53
West Fla. Racing & Athletic Assn., Inc	106	52,507.00
Palm Beach Kennel Club, Inc.....	74	37,336.50
Totals,	2242	\$ 894,365.24

The Racing Associations have, according to their individual sworn audits, made civic and charitable contributions in the amounts shown in the following table:

3RD ANNUAL REPORT OF FLORIDA STATE RACING COMMISSION

Miami Jockey Club, Inc.....	\$ 30,454.43
West Flagler Amusement Company, Inc.	1,321.00
Biscayne Kennel Club, Inc.....	2,174.56
Miami Beach Kennel Club, Inc.....	9,386.00
Clay County Kennel Club, Inc.....	2,987.00
St. Petersburg Kennel Club, Inc.....	5,277.14
West Fla. Racing & Ath. Assn., Inc.....	2,244.20
Palm Beach Kennel Club, Inc.....	711.25
TOTAL,	\$ 54,555.58

The following table shows the number of applications for permits to conduct dog and horse racing in the state for the 1933-34 season and the number of permits granted and denied:

Applications received for Dog Racing.....	6
Applications received for Horse Racing.....	1
Permits granted for Dog Racing.....	5
Permits granted for Horse Racing.....	1
Permits denied for Dog Racing	1
Permits denied for Horse Racing.....	0

None of the foregoing granted permits were ratified.

The Racing Permit issued to the Sanford-Orlando Kennel Club, Inc., Longwood, Seminole County, on August 11th, 1931, was revoked and license cancelled by the Racing Commission on March 16th, 1934.

The following is a recapitulation of the audit of the books of the State Racing Commission, as made by the State Auditor together with tables showing the pari mutuel sales, attendance and revenue to the state of each track, and graphs showing daily pari mutuel sales, and attendance at each track for the season of 1933-34 and that of 1932-33:

3RD ANNUAL REPORT OF FLORIDA STATE RACING COMMISSION

SUMMARY
 INCOME, EXPENDITURES AND DISBURSEMENTS
 from
 July 1st, 1933 to June 30th, 1934.

INCOME:

Admission Tax:

Dog Tracks	\$ 102,639.70	
Horse Tracks	102,187.51	\$ 204,827.21

Tax on Pari-Mutuel Sales:

Dog Tracks	\$ 330,312.93	
Horse Tracks	496,174.08	826,487.01

Occupational License Fees.....		40,830.00
1 Assumed Name Registration Fee—		
Horse Track		50.00
15 Assumed Name Registration Fees—		
Dog Tracks		150.00
20 Color Registrations		20.00
 Total Income for Season		 \$1,072,364.22

3RD ANNUAL REPORT OF FLORIDA STATE RACING COMMISSION

INCOME, EXPENDITURES AND DISBURSEMENTS Cont'd

EXPENDITURES BY RACING COMMISSION:

Salaries:

Commissioners	\$ 11,400.00	
General Auditors, Inspectors and Investigators	6,979.00	
Track Supervisors (Including Supervision, Inspection, Chemical Laboratory and Saliva Test Costs against Horse Stimulation and dop- ing)	100,572.00	
Office Employees	5,201.64	\$ 124,152.64

Traveling Expenses:

Commissioners	\$ 6,225.57	
General Auditors, Inspectors and investigators	392.73	
Track Supervisors	510.62	
Office Employees	112.30	7,241.22

Miscellaneous Expenses:

Stationery & Printing	\$ 2,485.68	
Bonds (Commissioners)	142.79	
Furniture and Fixtures	76.20	
Postage	387.76	
Office Rental	808.10	
Equipment Rental	70.40	
Telephone & Telegraph	1,937.13	
Miscellaneous Other Exp.	384.26	6,292.32

Total Expenditures by Rac- ing Commission	\$	137,686.18
--	----	------------

Net Income for Entire Season	\$	934,678.04
------------------------------------	----	------------

3RD ANNUAL REPORT OF FLORIDA STATE RACING COMMISSION

INCOME, EXPENDITURES AND DISBURSEMENTS, Cont'd

Net income brought forward.....	\$	934,678.04
Balance on Hand after Payment of all expenses through June 30th, 1933, and after making remittances to sixty-seven counties of balance on hand as of June 30th, 1933.....	\$	73,370.05
(Each County received \$10,461.20)		
Transportation Refund made by Blue Bus Company		38.65
Additional Admission Tax Collected from Miami Beach Kennel Club, Inc., unpaid from 1932-33 Racing Season....		6.00
Unearned Premiums Refunded on Cancelled Bonds		86.33
		<hr/>
Total To Be Accounted for.....	\$	1,008,179.07

DISBURSEMENTS BY STATE COMPTROLLER

Transfer to General State Revenue Fund	\$	60,000.00
Remittance of \$12,825.80 to each of Sixty-Seven Counties in State		859,328.60
		<hr/>
Total Disbursements by State Comptroller	\$	919,328.60
		<hr/>
Balance in State Racing Commission Fund June 30th, 1934	\$	88,850.47

DATA COMPARING RACING RESULTS

1932-33 and 1933-34 Seasons

3RD ANNUAL REPORT OF FLORIDA STATE RACING COMMISSION

1932-33 Season

1933-34 Season

Total State Revenue	Pari-Mutuel Sales	Attend- ance	Number Racing Days	GREYHOUND RACING ASSOCIATIONS	Number Racing Days	Attend- ance	Pari-Mutuel Sales	Total State Revenue
\$ 78,247.78	\$ 1,990,466.00	179,238	52	Biscayne Kennel Club, Inc.	66	187,028	\$ 1,795,204.00	\$ 75,408.92
44,836.98	1,042,979.00	115,576	90	Clay County Kennel Club, Inc.	90	104,557	1,102,281.00	45,484.13
69,224.93	1,731,821.00	153,103	53	Miami Beach Kennel Club, Inc.	66	209,283	2,687,082.00	103,520.76
26,953.86	612,722.00	73,722	84	Palm Beach Kennel Club, Inc.	69	63,593	733,226.00	29,526.08
49,939.95	1,185,935.00	129,319	90	St. Petersburg Kennel Club, Inc.	90	157,936	1,777,491.00	70,958.33
2,927.70	43,260.00	8,699	12	Six Mile Creek Kennel Club, Inc.				
65,331.98	1,517,786.00	169,884	45	W. Flagler Amusement Co., Inc	52	193,418	1,772,574.00	75,259.02
20,604.92	443,900.00	60,279	61	W. Fla. Racing & Ath. Assn, Inc	90	110,582	1,142,573.00	46,895.39
\$358,068.10	\$ 8,568,869.00	889,820	487	TOTALS	523	1,026,397	\$11,010,431.00	\$ 447,052.63

HORSE RACING ASSOCIATIONS

\$ 98,515.50	\$ 2,539,426.00	114,916	18	Gables Racing Assoc., Inc.	34	181,132	\$ 4,750,725.00	\$ 186,232.17
318,991.16	8,038,643.00	276,281	45	Miami Jockey Club, Inc.	45	374,612	11,692,641.00	432,267.98
				Tampa Shores Jockey Club, Inc.	7	8,883	95,770.00	6,791.44
\$417,506.66	\$10,578,069.00	391,197	63	TOTALS	86	564,627	\$16,539,136.00	\$ 625,291.59

SUMMARY OF ALL TRACKS

\$358,068.09	\$ 8,568,869.00	889,820	487	Greyhound Racing Assoc.	523	1,026,397	\$11,010,431.00	\$ 447,052.63
417,506.66	10,578,069.00	391,197	63	Horse Racing Associations	86	564,627	16,539,136.00	625,291.59
\$775,574.75	\$19,146,938.00	1,281,017	550	TOTALS	609	1,591,024	\$27,549,567.00	\$1,072,344.22

3RD ANNUAL REPORT OF FLORIDA STATE RACING COMMISSION

TAMPA SHORES JOCKEY CLUB

Tampa Shores, Florida

1933-34 Racing Season

7 Racing Days

Track Opened February 8th, 1934, Closed February 15th, 1934

Revenue to State:

\$95,770.00 Total Pari-Mutuel Sales Tax- ed @ 3%.....	\$ 2,873.10
\$6,438.00 Total Admission Taxed P 15%.....	965.70
295 Occupational Licenses Taxed @ \$10 each	2,950.00
Overpayment to State	2.64
	<hr/>
Total Revenues	\$ 6,791.44
Less Salaries Paid to State Personnel at Track	2,130.00
	<hr/>
Net Revenue to State for Entire Season.....	\$ 4,661.44

COMPARATIVE DATA

1932-33 Season		1933-34 Season
Did not operate	Average Daily Attendance	1,269
	Average Daily Pari-Mutuel Sales	\$13,681.00

3RD ANNUAL REPORT OF FLORIDA STATE RACING COMMISSION

Owing to the short time this Track operated
no graf was prepared for it.

3RD ANNUAL REPORT OF FLORIDA STATE RACING COMMISSION

GABLES RACING ASSOCIATION, INC.

Tropical Park

Coral Gables, Florida

1933-34 Racing Season

34 Racing Days

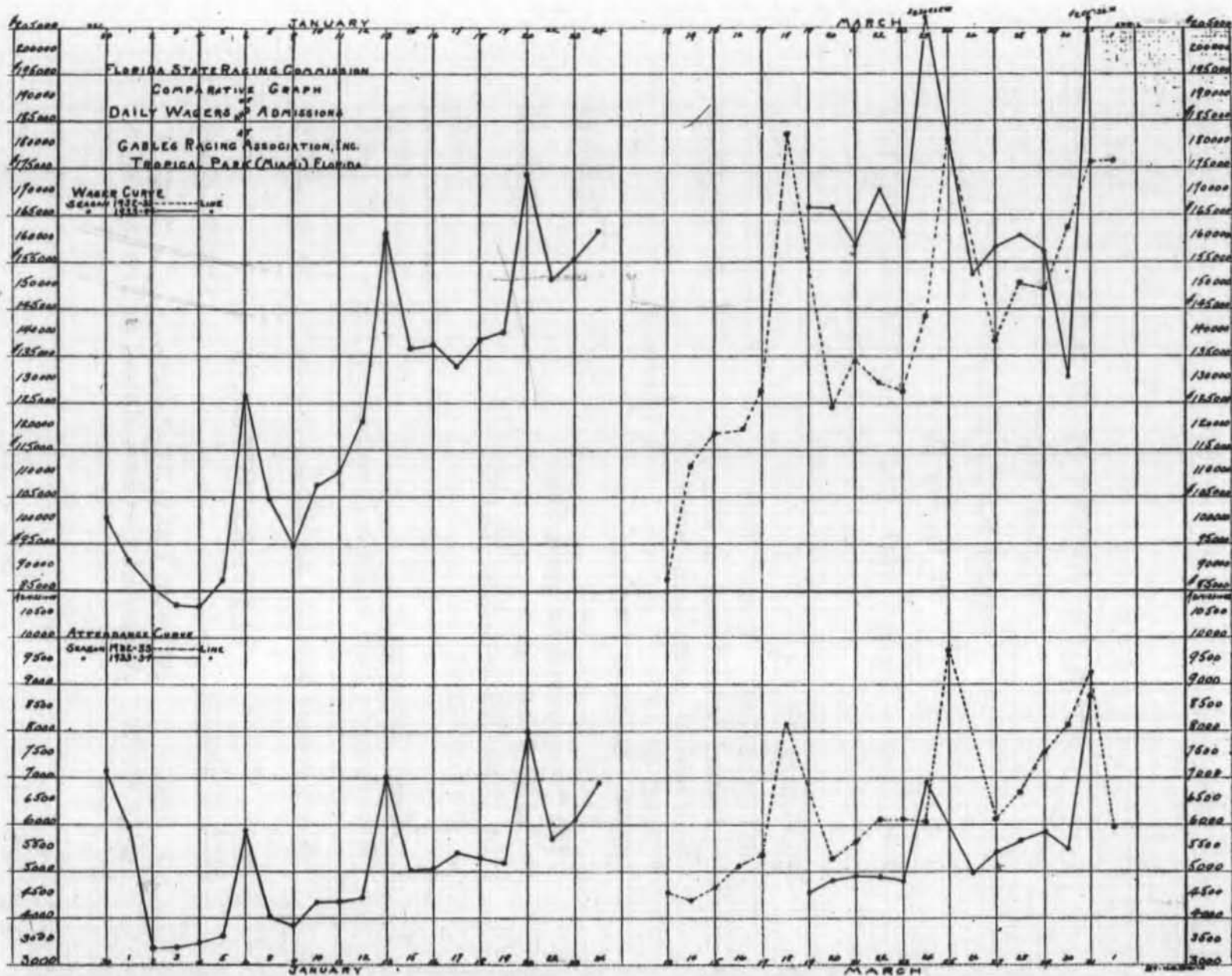
Track Opened December 30th, 1933, Closed January 24th, 1934
 Reopened March 19th, Closed March 31st, 1934

Revenue to State:

\$4,750,725.00 Total Pari-Mutuel Sales Tax- ed @ 3%	\$142,521.75
\$179,622.80 Total Admissions Taxed @ 15%	26,943.42
1671 Occupational Licenses Taxed @ \$10.00 each	16,710.00
1 Assumed Name Registration Fee	50.00
7 Color Registrations Taxed at \$1.00 each.....	7.00
	<hr/>
Total Revenue	\$186,232.17
Less Salaries Paid to State Personnel At Track	15,076.00
	<hr/>
Net Revenue to State for Entire Season.....	\$171,156.17

COMPARATIVE DATA

1932-33 Season		1933-34 Season
5,762	Average Daily Attendance	5,327
\$ 141,079.00	Average Daily Pari-Mutuel Sales	\$139,845.00



3RD ANNUAL REPORT OF FLORIDA STATE RACING COMMISSION

MIAMI JOCKEY CLUB, INC.

Hialeah, Florida

1933-34 Racing Season

45 Racing Days

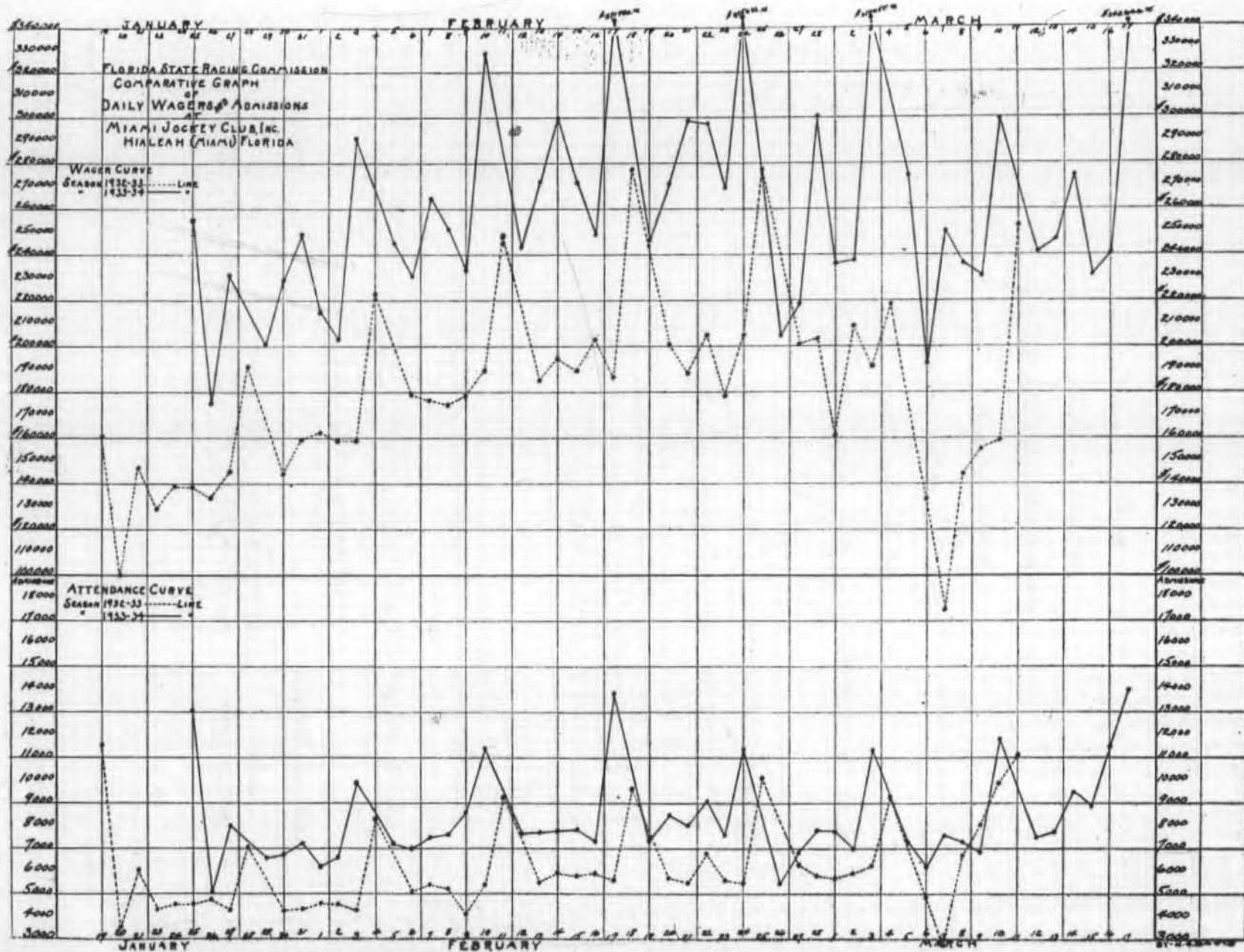
Track Opened January 25th, 1934, Closed March 17th, 1934

Revenue to State:

\$11,692,641.00 Total Pari-Mutuel Sales Taxed @ 3%—		\$ 350,779.23
\$492,569.00 Admission Sales Taxed @ 15% _____	\$ 73,885.35	
3,904 Bleacher Admissions Taxed @ 10c each _____	390.40	74,275.75
720 Occupational Licenses Taxed @ \$10.00 each _____		7,200.00
13 Color Registrations Taxed @ \$1.00 each _____		13.00
Total Revenue _____		\$ 432,267.98
Less Salaries Paid to State Personnel at Track		21,436.00
Net Revenue to State for Entire Season _____		\$ 410,831.98

COMPARATIVE DATA

1932-33 Season		1933-34 Season
5,303	Average Daily Attendance	8,325
\$178,636.00	Average Daily Pari-Mutuel Sales	\$259,835.00



3RD ANNUAL REPORT OF FLORIDA STATE RACING COMMISSION

BISCAYNE KENNEL CLUB, INC.

Miami, Florida

1933-34 Racing Season

66 Racing Days

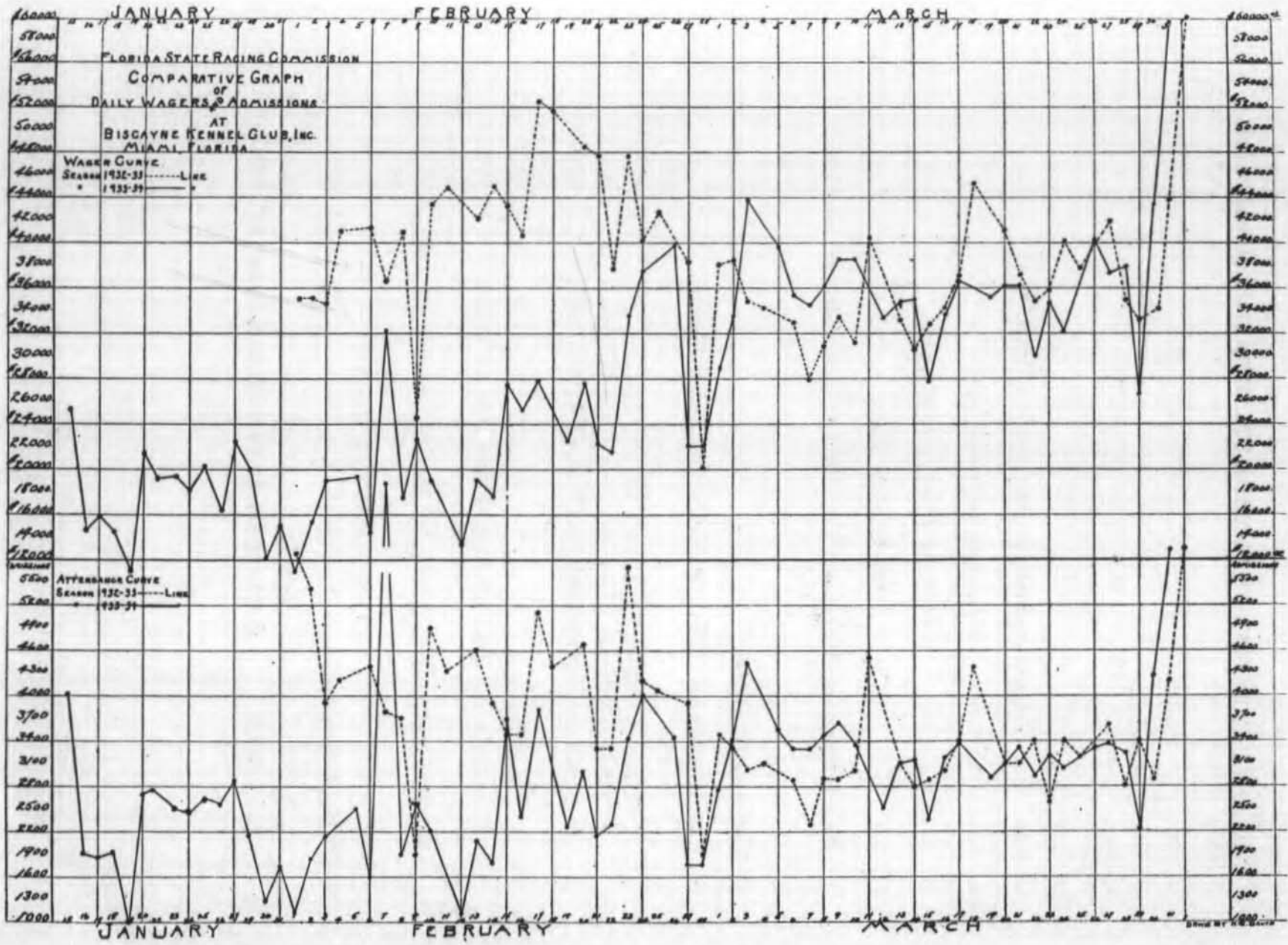
Track Opened January 15th, 1934, Closed March 31st, 1934

Revenue to State:

\$1,795,204.00 Total Pari-Mutuel Sales Tax- ed @ 3%	\$ 53,856.12
187,028 Admissions Taxed @ 10c each.....	18,702.80
280 Occupational Licenses Taxed @ \$10. each	2,800.00
5 Assumed Name Registration Fees @ \$10.00 each	50.00
	<hr/>
Total Revenue	\$ 75,408.92
Less Salaries Paid to State Personnel at Track	8,694.00
	<hr/>
Net Revenue to State for Entire Season.....	\$ 66,714.92

COMPARATIVE DATA

1932-33 Season		1933-34 Season
3,449	Average Daily Attendance	2,834
\$38,278.00	Average Daily Pari-Mutuel Sales	\$27,200.00



3RD ANNUAL REPORT OF FLORIDA STATE RACING COMMISSION

CLAY COUNTY KENNEL CLUB, INC.

Orange Park, Florida

1933-34 Racing Season

90 Racing Days

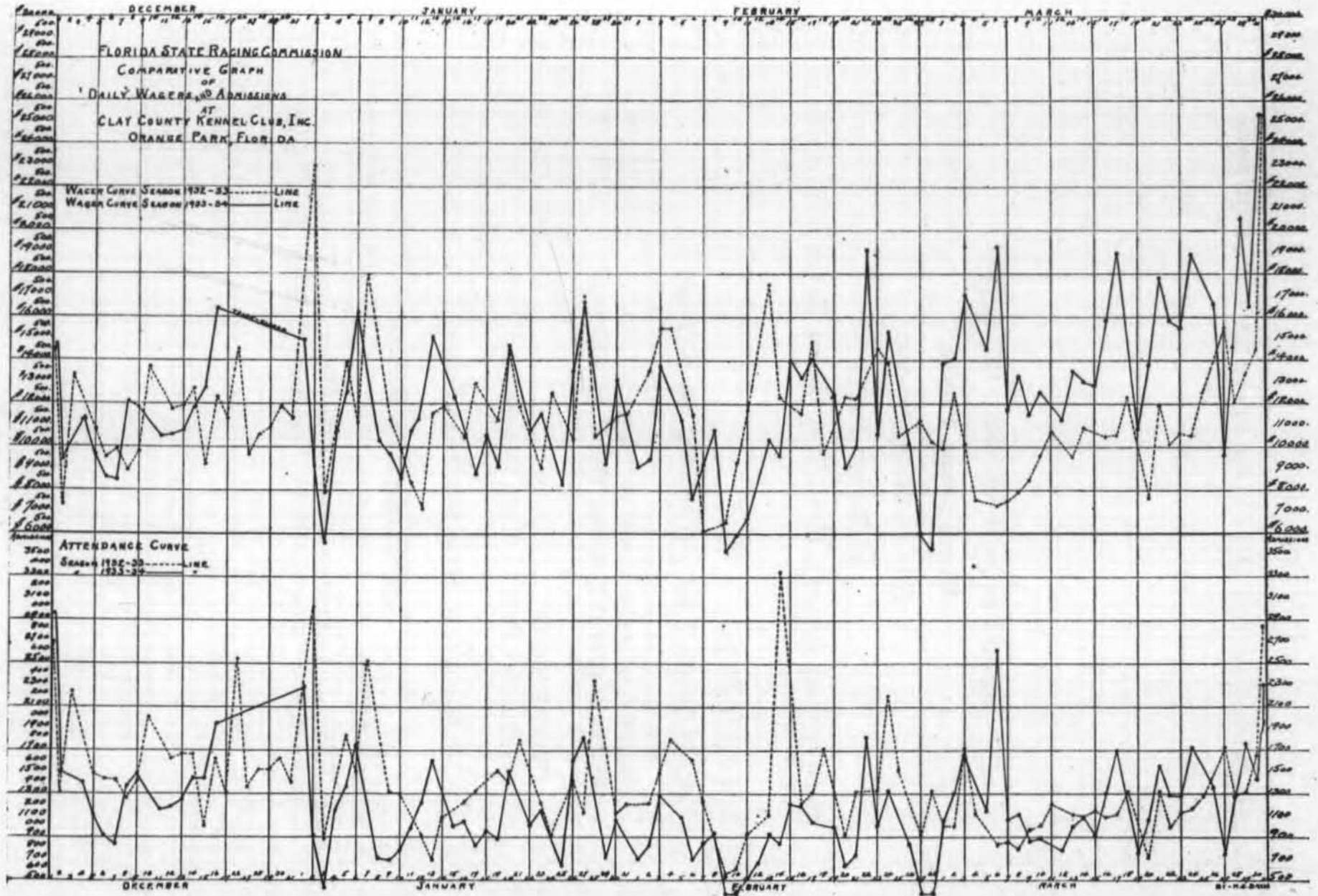
Track Opened December 1st, 1933, Closed March 1st, 1934

Revenue to State:

\$1,102,281.00 Total Pari-Mutuel Sales Taxed	
@ 3%	\$ 33,068.43
104,557 Admissions Taxed @ 10c each.....	10,455.70
193 Occupational Licenses Taxed @ \$10 each	1,930.00
3 Assumed Name Registrations @ \$10.00 each	30.00
	<hr/>
Total Revenue	\$ 45,484.13
Less Salaries Paid to State Personnel at Track	11,192.00
	<hr/>
Net Revenue to State for Entire Season.....	\$ 34,292.13

COMPARATIVE DATA

1932-33 Season		1933-34 Season
1,284	Average Daily Attendance	1,162
\$11,588.00	Average Daily Pari-Mutuel Sales	\$12,248.00



3RD ANNUAL REPORT OF FLORIDA STATE RACING COMMISSION

MIAMI BEACH KENNEL CLUB, INC.

Miami Beach, Florida

1933-34 Racing Season

66 Racing Days

Track Opened January 15th, 1934, Closed March 31st, 1934

Revenue to State:

\$2,687,082.00 Total Pari-Mutuel Sales Taxed	
@3% _____	\$ 80,612.46
209,283 Admission Taxed @ 10c each _____	20,928.30
198 Occupational Licenses Taxed @ \$10 each _____	1,980.00
	<hr/>
Total Revenue _____	\$103,520.76
Less Salaries Paid to State Personel at Track _____	9,368.00
	<hr/>
Net Revenue to State for Entire Season _____	\$ 94,152.76

COMPARATIVE DATA

1932-33 Season		1933-34 Season
2,888	Average Daily Attendance	3,174
\$32,676.00	Average Daily Pari-Mutuel Sales	\$41,714.00

3RD ANNUAL REPORT OF FLORIDA STATE RACING COMMISSION

PALM BEACH KENNEL CLUB, INC.

West Palm Beach, Florida

1933-34 Racing Season

69 Racing Days

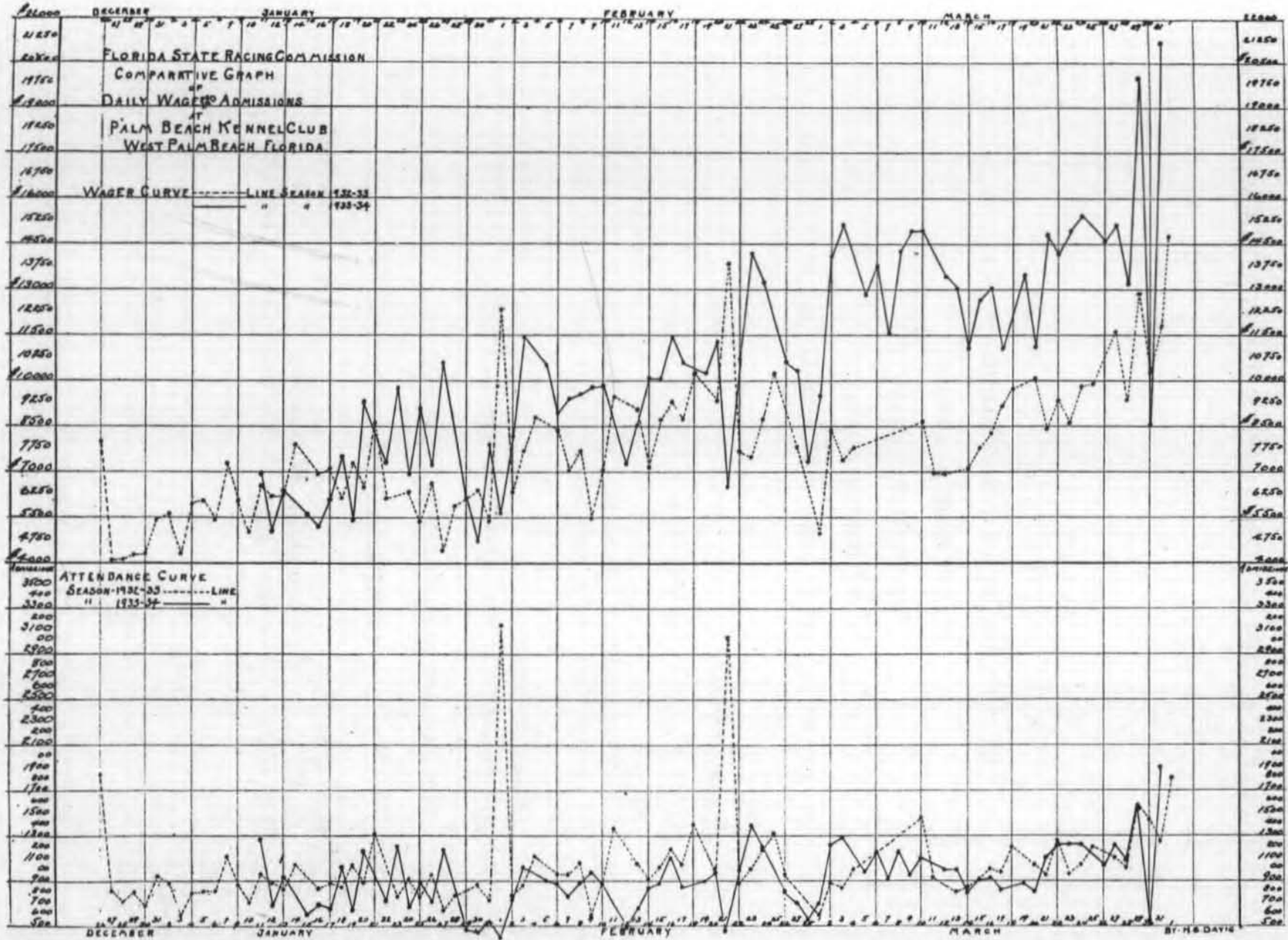
Track Opened January 11th, 1934, Closed March 31st, 1934

Revenue to State:

\$733,226.00 Total Pari-Mutuel Sales Taxed	
@ 3%	\$ 21,996.78
63,593 Admissions Taxed @ 10c each	6,359.30
117 Occupational Licenses Taxed @ \$10 each	1,170.00
	<hr/>
Total Revenue	\$ 29,526.08
Less Salaries Paid to State Personnel at Track	6,600.00
	<hr/>
Net Revenue to State for Entire Season	\$ 22,926.08

COMPARATIVE DATA

1932-33 Season		1933-34 Season
878	Average Daily Attendance	922
\$7,294.00	Average Daily Pari-Mutuel Sales	\$10,627.00



3RD ANNUAL REPORT OF FLORIDA STATE RACING COMMISSION

ST. PETERSBURG KENNEL CLUB, INC.

St. Petersburg, Florida

1933-34 Racing Season

90 Racing Days

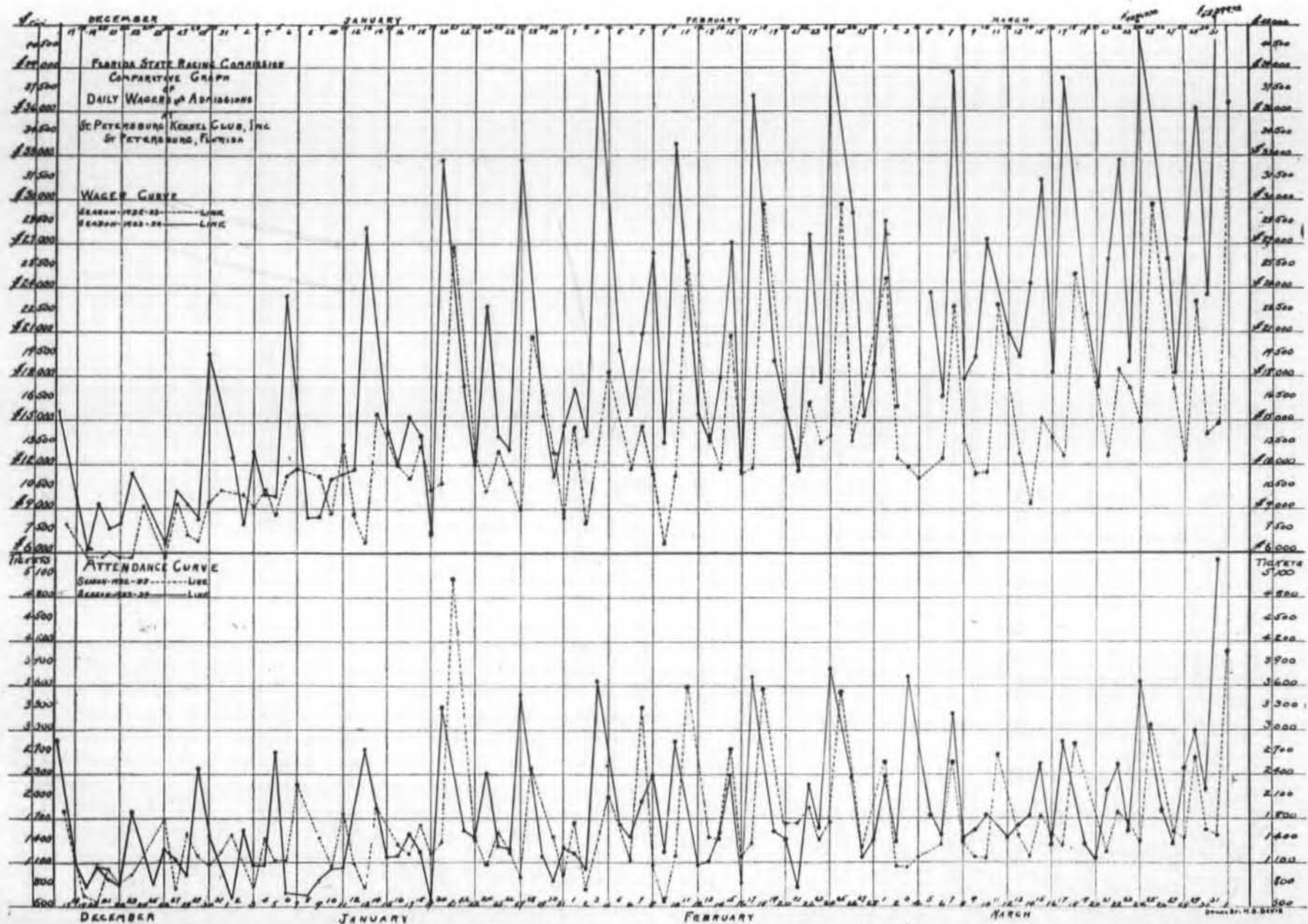
Track Opened December 16th, 1933, Closed March 31st, 1934

Revenue to State:

\$1,777,491.00 Total Pari-Mutuel Sales Taxed	
@ 3%	\$ 53,324.73
157,936 Admissions Taxed @ 10c each.....	15,793.60
184 Occupational Licenses Taxed @ \$10 each	1,840.00
	<hr/>
Total Revenue	\$ 70,958.33
Less Salaries Paid to State Personnel at Track	9,372.00
	<hr/>
Net Revenue to State for Entire Season.....	\$ 61,586.33

COMPARATIVE DATA

1932-33 Season		1933-34 Season
1,437	Average Daily Attendance	1,755
\$13,177.00	Average Daily Pari-Mutuel Sales	\$19,749.00



3RD ANNUAL REPORT OF FLORIDA STATE RACING COMMISSION

WEST FLAGLER AMUSEMENT COMPANY, INC.

Miami, Florida

1933-34 Racing Season

52 Racing Days

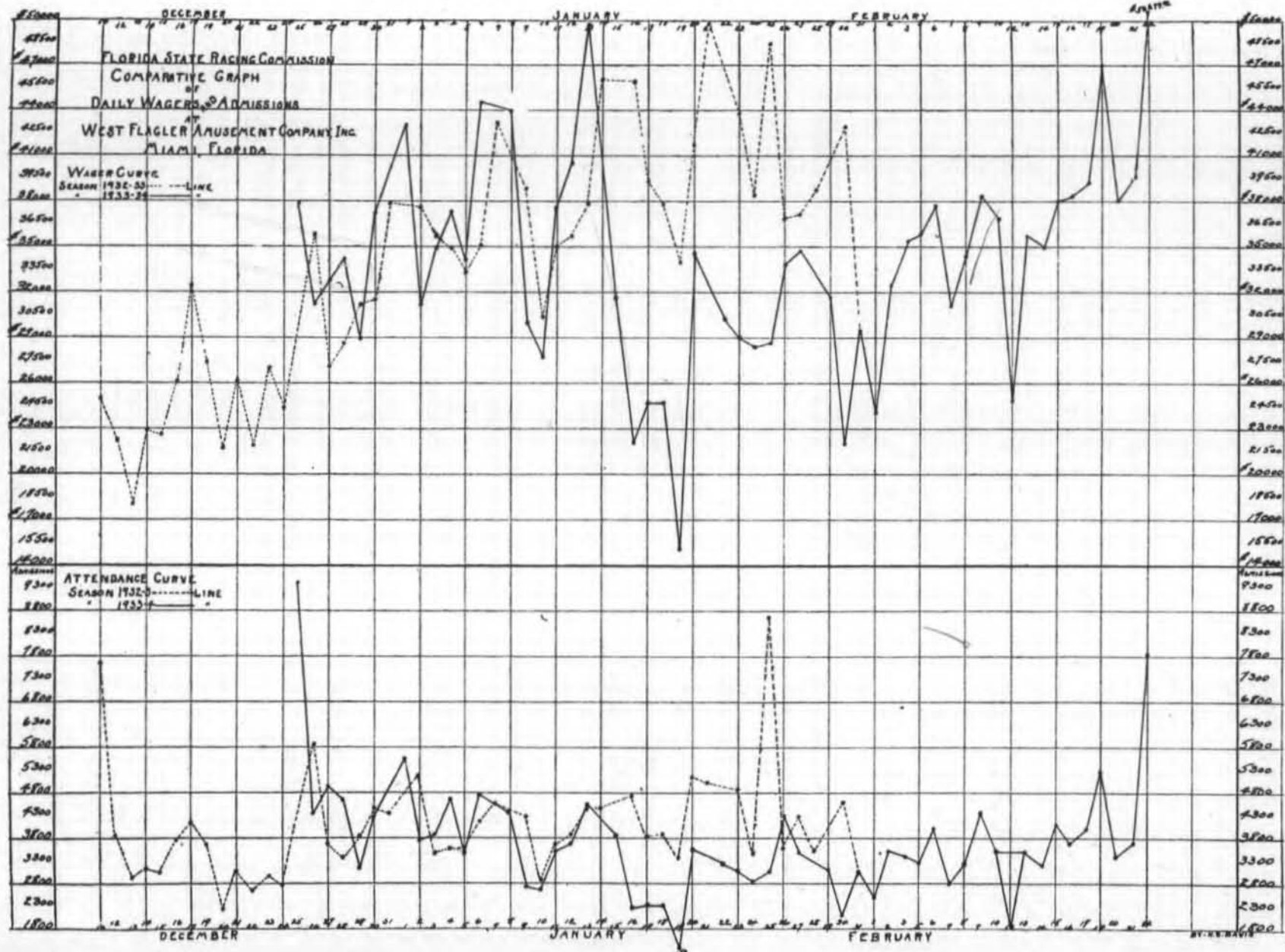
Track Opened December 25, 1933, Closed February 22, 1934

Revenue to State:

\$1,772,574.00 Total Pari-Mutuel Sales Taxed	
@3%	\$ 53,177.22
193,418 Admissions Taxed @ 10c each.....	19,341.80
267 Occupational Licenses Taxed @ \$10 each	2,670.00
7 Assumed Name Registrations @ \$10.00 each	70.00
	<hr/>
Total Revenue	\$ 75,259.02
Less Salaries Paid to State Personnel at Track	5,852.00
	<hr/>
Net Revenue to State for Entire Season.....	\$ 69,407.02

COMPARATIVE DATA

1932-33 Season		1933-34 Season
3,775	Average Daily Attendance	3,719
\$33,729.00	Average Daily Pari-Mutuel Sales	\$34,088.00



3RD ANNUAL REPORT OF FLORIDA STATE RACING COMMISSION

WEST FLORIDA RACING & ATHLETIC ASSN., INC.

Sulphur Springs, Florida

1933-34 Racing Season

90 Racing Days

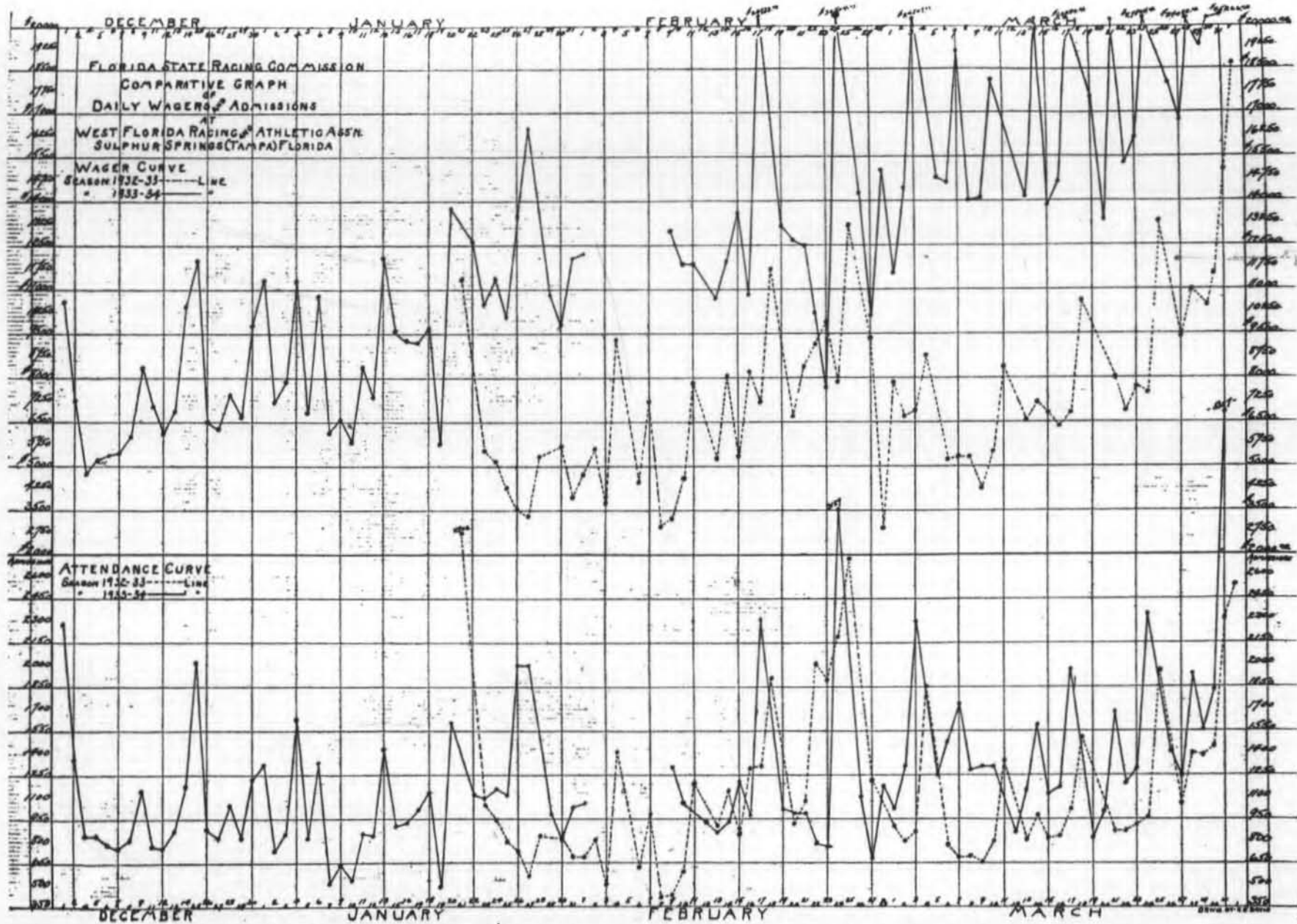
Track Opened December 1st, 1933, Closed March 31st, 1934

Revenue to State:

\$1,142,573.00 Total Pari-Mutuel Sales Taxed	
@ 3%	\$ 34,277.19
110,582 Admissions Taxed @ 10c each.....	11,058.20
156 Occupational Licenses Taxed @ \$10 each	1,560.00
	<hr/>
Total Revenue	\$ 46,895.39
Less Salaries Paid to State Personnel at Track	9,534.00
	<hr/>
Net Revenue to State for Entire Season.....	\$ 37,361.39

COMPARATIVE DATA

1932-33 Season		1933-34 Season
988	Average Daily Attendance	1,229
\$7,277.00	Average Daily Pari-Mutuel Sales	\$12,673.00



3RD ANNUAL REPORT OF FLORIDA STATE RACING COMMISSION

The foregoing report is made in compliance with Sub-section 2, of Section 2 of Chapter 14832, Laws of Florida, Acts of 1931.

Respectfully submitted,

FLORIDA STATE RACING COMMISSION

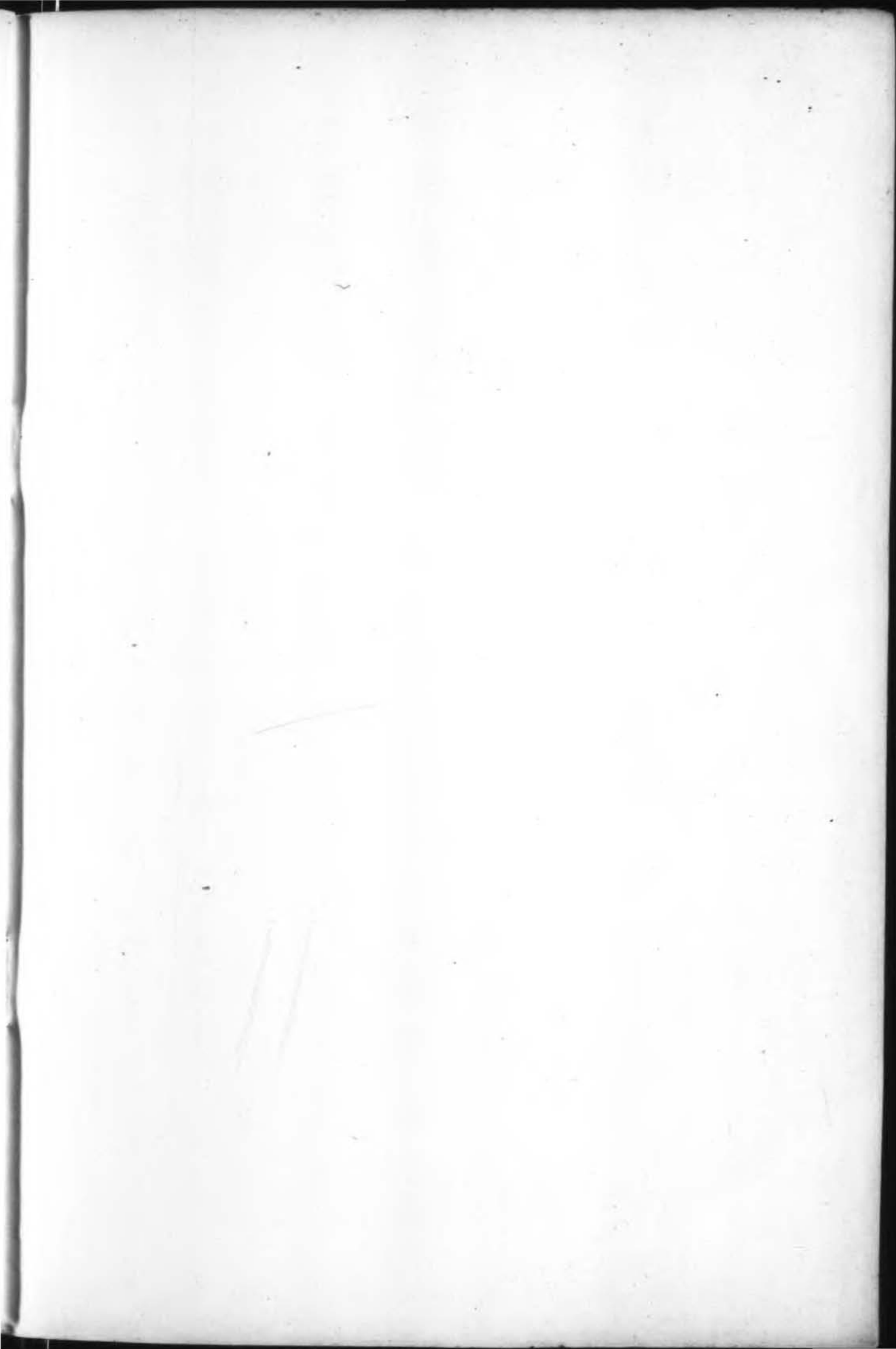
B. F. Paty, Chairman

Thomas A. Johnson

Frank E. Thompson

Roger H. West

Walter H. Donovan, Secretary.



2