

FLORIDA STATE LIBRARY

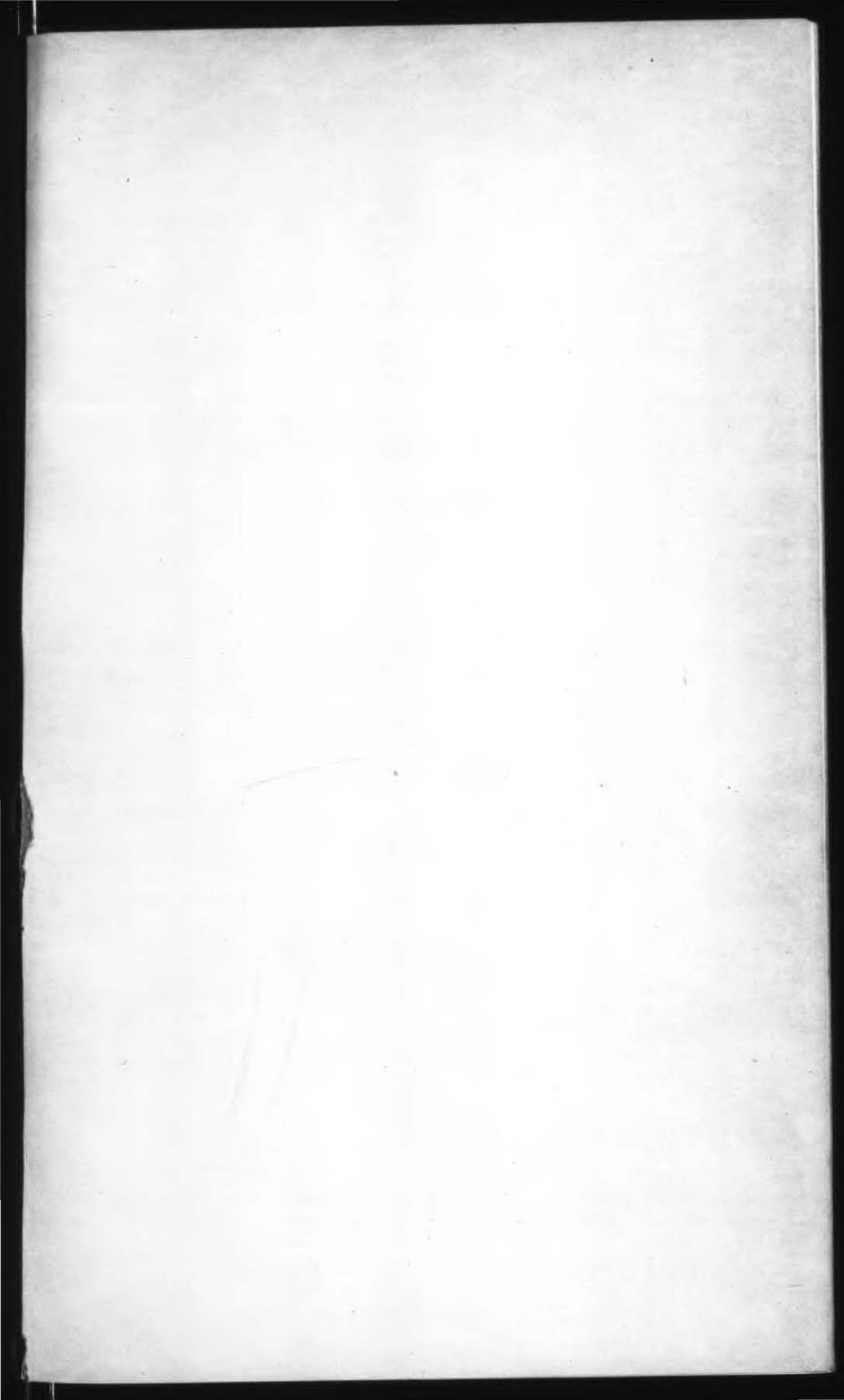
**Tenth Annual Report**  
**OF THE**  
**Florida State Racing**  
**Commission**



**For the Fiscal Year Ending**  
**June 30, 1941**

F351.26-  
6131

\$





# Tenth Annual Report

## OF THE

# Florida State Racing Commission

July 1, 1941.

His Excellency Spessard L. Holland,  
Governor of the State of Florida,  
Tallahassee, Florida.

The Florida State Racing Commission respectfully submits herewith its Tenth Annual Report for the period, July 1st, 1940, to June 30th, 1941, inclusive.

The personnel of the Commission for the tenth fiscal year, the districts from which they served and the periods, both dates inclusive, are as follows:

Name	Congressional District	From	To
Frank Rogers	First	July 1, 1940	January 15, 1941
Parks Glover	Second	“ “ “	November 8, 1940
E. A. Williams	Third	“ “ “	January 15, 1941
Jos. R. Stein	Fourth	“ “ “	“ 15, “
S. J. Hilburn	Fifth	“ “ “	June 30, “

The following members were elected and served as Chairman and Secretary for the periods shown:

Jos. R. Stein	Chairman	July 1, 1940, to January 15, 1941
Parks Glover	Secretary	July 1, 1940, to November 8, 1940

H. P. Baya was employed as attorney for the Commission as of July 1, 1940, to January 15, 1941.

Parks Glover resigned as Commissioner November 8, 1940, and F. M. Cone was appointed to succeed Parks Glover November 9, 1940. The Commission elected F. M. Cone as Secretary to the Commission.

Commissioners Jos. R. Stein, F. M. Cone, E. A. Williams, Frank Rogers and Attorney H. P. Baya resigned, effective as of January 16, 1941.

The following Commissioners were appointed January 16, 1941, to serve for the unexpired terms of the Commissioners who resigned:

Name	Congressional District
C. C. "Milo" Vega, Jr.	First
Louis J. Day	Second
William Paul Shelley, Jr.	Third
Alex M. Balfe	Fourth

The appointment of the following Commissioners was confirmed by the Senate for a two-year term from June 29, 1941:

Name	Congressional District
C. C. "Milo" Vega, Jr.	First
Louis J. Day	Second
William Paul Shelley, Jr.	Third
Alex M. Balfe	Fourth
S. J. Hilburn	Fifth

At the Commission meeting of January 17, 1941, the following officers were elected:

Alex M. Balfe	Chairman
William Paul Shelley, Jr.	Secretary

Mr. Henry S. Baynard was employed as attorney for the Commission January 17, 1941.

The following meetings were held by the Commission at the designated cities:

Jacksonville—July 8, 1940.  
Jacksonville—August 14, 1940.  
Miami—November 2, 1940.  
Miami—November 16, 1940.  
Miami—December 20, 1940.  
Miami—December 31, 1940.  
Miami—January 7, 1941.  
Miami—January 11, 1941.  
Miami—January 17, 18, 1941.  
Miami—January 25, 1941.  
Miami—February 15, 1941.  
Miami—February 26, 27, 28, 1941.  
Miami—April 8, 9, 12, 1941.

HOLLYWOOD JOCKEY CLUB filed application for dates to conduct horse racing on July 8th, 1940. Commission postponed decision for 30 days.

Hollywood Jockey Club asked for dates to conduct horse racing during the 1940-41 season on August 14th, 1940. Application was denied by Commission on August 14th, 1940.

WEST COAST JOCKEY CLUB applied for permit to conduct horse racing on July 8th, 1940. Action on application was deferred to August 10th, 1940.

West Coast Jockey Club filed amended application for permit on August 14th, 1940. Permit was granted on August 14th, 1940.

The Commission revoked the permit granted to the West Coast Jockey Club at a meeting of the Commission November 2nd, 1940.

DAYTONA BEACH JOCKEY CLUB filed application for permit to conduct horse racing on July 8th, 1940. Permit was denied by Commission July 8th, 1940.

Daytona Beach Jockey Club filed amended application for permit to conduct horse racing on August 14th, 1940. Amended application was denied by Commission on August 14th, 1940.



FLORIDA FRONTON ASSOCIATION filed application for permit to conduct exhibitions of the Spanish ball game called Jai-Alai on July 8th, 1940. Action on application was deferred by Commission.

Florida Fronton Association filed amended application for permit on August 14th, 1940. Permit granted by Commission on August 14th, 1940. Permit was revoked by Commission November 16th, 1940.

COLISEUM, INC., filed application for permit to conduct exhibitions of the Spanish ball game called Jai-Alai on July 8th, 1940. Action on application was deferred as application was not in compliance with law.

MIAMI JAI-ALAI filed application for permit to conduct exhibitions of the Spanish ball game called Jai-Alai on July 8th, 1940. Action on application was deferred as application was not in compliance with law.

SANTA ROSA KENNEL CLUB'S permit issued July 13th, 1938, to conduct dog racing was rescinded and revoked by the Commission on November 16th, 1940.

All tracks except Sarasota Kennel Club and The Hollywood Jockey Club operated during the 1940-41 season.

On May 1st, 1941, the Miami office of the Commission was moved from 701 American Bank Building to 1302 Congress Building. The laboratory was placed in storage and will be re-established at a new location before the beginning of the next racing season.

The campaign against the stimulation of thoroughbreds has continued under the guidance of Dr. J. G. Catlett, Chief Veterinarian, and Dr. Y. T. Oester, Chief Chemist, and staff.

The laboratory was installed in the season of 1937-38, during which 555 tests were made; the past season of 1940-41, 1,121 tests were made.

Since the installation of the laboratory, new methods for detection of narcotics and stimulants have been developed. As the space occupied during the past season was inadequate and the apparatus out of date, it has been decided to move the laboratory to a new location and install adequate equipment.

The following is a summary of tests made in the laboratory,  
and the results of analysis as made by Dr. Oester:

### LABORATORY REPORT, 1940-1941 SEASON

#### SAMPLES TESTED

Horse saliva .....	680
Horse urine .....	207
Dog urine .....	198
Medicine .....	4
Miscellaneous .....	2
Experimental .....	30
<hr/>	
Total .....	1,121

#### POSITIVE SAMPLES

Horse Saliva .....	0
Horse Urine .....	0
Dog Urine:	
Phenolphthalein .....	2
Caffeine .....	1
<hr/>	
Total .....	3

April 12, 1941.

Y. T. OESTER, Ph. D.  
Chief Chemist.



STATEMENT—RECEIPTS AND DISBURSEMENTS

INCOME

Admission Tax:

Dog Tracks .....	\$ 158,348.35	
Horse Tracks .....	175,108.26	
Jai Alai Fronton .....	20,921.52	\$ 354,378.13
	<hr/>	

Commission on Pari-Mutuel Sales:

Dog Tracks .....	\$ 725,398.41	
Horse Tracks .....	1,288,451.94	
Jai Alai Fronton .....	34,555.71	\$2,048,406.06
	<hr/>	

Occupational License .....	\$ 29,463.25	
Greyhound Registration Fees .....	3,136.00	
Assumed Name Registration Fees .....	910.00	
Color Registrations .....	75.00	\$ 33,584.25
	<hr/>	

Total Other Receipts .....	5.65	5.65
		<hr/>

Total Receipts for Current Season.....	\$2,436,374.09
--	----------------

Balance on Hand July 1, 1940.....	32,925.42
	<hr/>

Total Available and to be Accounted For.....	\$2,469,299.51
--	----------------

### DISBURSEMENTS

Expenditures by State Racing Commission:

Salaries:

Commissioners .....	\$ 13,800.00
Commission Attorney .....	3,000.00
Department Heads and General Employees .....	16,785.21
Office and Clerical .....	9,411.26

\$ 42,996.47

Individual Plant Supervision:

Dog Racing Associations .....	\$ 105,949.00
Horse Racing Associations .....	44,575.00
Jai Alai Fronton .....	7,836.00

\$ 158,360.00

Traveling Expenses:

Commissioners .....	\$ 3,934.26
Commission Attorney .....	393.88
Department Heads and General Employees .....	1,716.15
Office and Clerical .....	43.75

Total Traveling Expenses ..... \$ 6,088.04

Miscellaneous Disbursements:

Bond Premiums .....	\$ 346.75
Freight and Express .....	162.14
Furniture and Fixtures .....	414.62
Insurance .....	1,401.08
Laboratory, Furniture and Fixtures .....	20.40
Laboratory Expenses .....	628.30
County Judge's Fees .....	1,877.00
Miscellaneous Expenses .....	623.18
Postage .....	360.00
Rentals—Office .....	2,167.50
Rentals—Store Room .....	25.00
Stationery, Printing and Office Supplies .....	1,884.83
Telephone and Telegraph .....	1,622.90

Total Miscellaneous ..... \$ 11,533.70

Total ..... \$ 218,978.21

Distribution to Counties:

\$33,100 each ..... \$2,217,700.00

Grand Total Disbursements ..... \$2,436,678.21

Balance on Hand, State Racing Fund,  
June 30, 1941 ..... \$ 32,621.30

Total Accounted For ..... \$2,469,299.51

**FLORIDA STATE RACING COMMISSION  
COMPARATIVE DATA**

1939-40 Season

1940-41 Season

1939-40 Season										1940-41 Season										
Tracks Revenue From Breaks	Tracks Revenue From Pari-Mutuel Sales	No. State Employees	State Supervision Expense at Tracks	Total State Revenue	Tax on Pari-Mutuel Sales	Tax on Attendance	Pari-Mutuel Sales	Attendance	No. Racing Days	GREYHOUND RACING ASSOCIATIONS										
										No. Racing Days	Attendance	Pari-Mutuel Sales	Tax on Attendance	Tax on Pari-Mutuel Sales	Total State Revenue	State Supervision Expense at Tracks	No. State Employees	Tracks Revenue From Pari-Mutuel Sales	Tracks Revenue From Breaks	
\$ 16,620.75	\$ 192,385.32	12	\$ 9,156.00	\$ 60,544.63	\$ 48,096.33	\$ 12,448.30	\$ 1,603,211.00	124,483	90	Biscayne Kennel Club, Inc.	90	161,994	\$ 2,112,390.00	\$ 16,199.40	\$ 63,371.70	\$ 79,571.10	\$ 10,828.00	13	\$ 253,486.80	\$ 18,641.20
25,405.80	267,276.24	12	9,866.00	84,243.36	66,819.06	17,424.30	2,227,302.00	174,243	90	Broward County Kennel Club, Inc.	90	192,836	2,576,664.00	19,283.60	77,299.92	96,583.52	10,823.00	13	309,199.68	26,624.70
19,255.10	217,263.12	12	9,865.00	66,174.18	54,315.78	11,858.40	1,810,526.00	118,584	90	Jacksonville Kennel Club, Inc.	90	127,472	2,217,125.00	12,747.20	66,513.75	79,260.95	11,213.00	13	266,055.00	24,375.35
46,490.10	537,551.28	14	12,070.00	161,588.52	134,387.82	27,200.70	4,479,594.00	272,007	90	Miami Beach Kennel Club, Inc.	90	297,019	4,846,091.00	29,701.90	145,382.73	175,084.63	13,009.00	16	581,530.92	45,555.95
16,541.30	163,151.52	11	8,742.00	51,999.78	40,787.88	11,211.90	1,359,596.00	112,119	85	Palm Beach Kennel Club, Inc.	86	128,374	1,593,785.00	13,071.85	47,813.55	60,885.40	9,522.00	12	191,254.20	17,132.25
36,323.15	352,913.64	13	11,210.00	105,717.01	88,228.41	17,488.60	2,940,947.00	174,886	90	St. Petersburg Kennel Club, Inc.	90	191,739	3,260,911.00	19,173.90	97,827.33	117,001.23	13,567.00	12	391,309.32	40,902.55
10,319.10	109,854.72	11	9,064.00	33,052.28	27,463.68	5,588.60	915,456.00	55,886	90	Sanford-Orlando Kennel Club, Inc.	90	58,616	1,053,427.00	5,861.60	31,602.81	37,464.41	11,116.00	13	126,411.24	11,268.35
2,487.95	22,467.96	11	6,798.00	7,147.19	5,616.99	1,530.20	187,233.00	15,302	66	Sarasota Kennel Club, Inc.	Did not operate 1940-41 Season									
45,194.80	520,244.64	14	11,180.00	162,253.26	130,061.16	32,192.10	4,335,372.00	321,921	90	West Flagler Kennel Club, Inc.	90	334,241	4,546,934.00	33,424.10	136,408.02	169,832.12	12,461.00	15	545,632.08	46,915.30
12,845.75	206,638.92	13	11,153.00	59,803.13	51,659.73	8,143.40	1,721,991.00	81,434	90	Associated Out-Door Clubs, Inc.	90	88,848	1,972,620.00	8,884.80	59,178.60	68,063.40	13,410.00	14	236,714.40	14,001.70
<b>\$231,483.80</b>	<b>\$2,589,747.36</b>	<b>123</b>	<b>\$ 99,104.00</b>	<b>\$ 792,523.34</b>	<b>\$ 647,436.84</b>	<b>\$145,086.50</b>	<b>\$21,581,228.00</b>	<b>1,450,865</b>	<b>871</b>	<b>TOTALS</b>	<b>806</b>	<b>1,581,139</b>	<b>\$24,179,947.00</b>	<b>\$158,348.35</b>	<b>\$ 725,398.41</b>	<b>\$ 883,746.76</b>	<b>\$105,949.00</b>	<b>121</b>	<b>\$2,901,593.64</b>	<b>\$245,417.35</b>
<b>HORSE RACING ASSOCIATIONS</b>																				
\$106,691.20	\$1,110,200.00	45	\$ 20,201.00	\$ 532,880.76	\$ 475,800.00	\$ 57,080.76	\$15,860,000.00	349,948	50	Gables Racing Association, Inc.	50	380,996	\$17,491,139.00	\$ 62,480.44	\$ 524,734.17	\$ 587,214.61	\$ 21,044.00	45	\$1,224,379.73	\$104,506.10
184,474.95	1,814,951.32	55	22,105.00	894,919.78	777,836.28	117,083.50	25,927,876.00	531,962	46	Miami Jockey Club	46	530,585	25,457,259.00	112,627.82	763,717.77	876,345.59	23,531.00	58	1,782,008.13	180,166.45
<b>\$291,166.15</b>	<b>\$2,925,151.32</b>	<b>100</b>	<b>\$ 42,306.00</b>	<b>\$1,427,800.54</b>	<b>\$1,253,636.28</b>	<b>\$174,164.26</b>	<b>\$41,787,876.00</b>	<b>881,910</b>	<b>96</b>	<b>TOTALS</b>	<b>96</b>	<b>911,581</b>	<b>\$42,948,398.00</b>	<b>\$175,108.26</b>	<b>\$1,288,451.94</b>	<b>\$1,463,560.20</b>	<b>\$ 44,575.00</b>	<b>103</b>	<b>\$3,006,387.86</b>	<b>\$284,672.55</b>
<b>\$ 8,991.65</b>	<b>\$ 122,312.76</b>	<b>8</b>	<b>\$ 7,072.00</b>	<b>\$ 49,406.69</b>	<b>\$ 30,578.19</b>	<b>\$ 18,828.50</b>	<b>\$ 1,019,273.00</b>	<b>184,491</b>	<b>90</b>	<b>JAI-ALAI FRONTON</b>	<b>90</b>	<b>202,744</b>	<b>\$ 1,151,857.00</b>	<b>\$ 20,921.52</b>	<b>\$ 34,555.71</b>	<b>\$ 55,477.23</b>	<b>\$ 7,836.00</b>	<b>9</b>	<b>\$ 138,222.84</b>	<b>\$ 10,183.65</b>
<b>SUMMARY OF ALL ASSOCIATIONS</b>																				
\$231,483.80	\$2,589,747.36	123	\$ 99,104.00	\$ 792,523.34	\$ 647,436.84	\$145,086.50	\$21,581,228.00	1,450,865	871	Dog Racing Associations	806	1,581,139	\$24,179,947.00	\$158,348.35	\$ 725,398.41	\$ 883,746.76	\$105,949.00	121	\$2,901,593.64	\$245,417.35
291,166.15	2,925,151.32	100	42,306.00	1,427,800.54	1,253,636.28	174,164.26	41,787,876.00	881,910	96	Horse Racing Associations	96	911,581	42,948,398.00	175,108.26	1,288,451.94	1,463,560.20	44,575.00	103	3,006,387.86	284,672.55
8,991.65	122,312.76	8	7,072.00	49,406.69	30,578.19	18,828.50	1,019,273.00	184,491	90	Jai-Alai Fronton	90	202,744	1,151,857.00	20,921.52	34,555.71	55,477.23	7,836.00	9	138,222.84	10,183.65
<b>\$531,641.60</b>	<b>\$5,637,211.44</b>	<b>231</b>	<b>\$148,482.00</b>	<b>\$2,269,730.57</b>	<b>\$1,931,651.31</b>	<b>\$338,079.26</b>	<b>\$64,388,377.00</b>	<b>2,517,266</b>	<b>1057</b>	<b>GRAND TOTALS</b>	<b>992</b>	<b>2,695,464</b>	<b>\$68,280,202.00</b>	<b>\$354,378.13</b>	<b>\$2,048,406.06</b>	<b>\$2,402,784.19</b>	<b>\$158,360.00</b>	<b>233</b>	<b>\$6,046,204.34</b>	<b>\$540,273.55</b>
			\$ 27,761.75							Receipts from Occupational Licenses					\$ 29,463.25					
			3,707.00							Receipts from Greyhound Registrations					3,136.00					
			956.00							Receipts from Assumed Name and Color Reg.					985.00					
			664.36							Receipts from Miscellaneous Sources					5.65					
			<b>\$2,302,819.68</b>							<b>TOTAL RECEIPTS</b>					<b>\$2,436,374.09</b>					
<b>OTHER DISBURSEMENTS</b>																				
		5	\$ 16,263.85							Commissioners—Salaries and Expenses						\$ 17,734.26	10			
		16	25,595.05							Gen. Office, Dept. Heads—Salaries and Expenses						31,350.25	44			
			10,362.41							Stationery, Ptg., Office Rent and Misc. Expense						11,533.70				
		21	\$ 52,221.31							<b>TOTALS</b>						<b>60,618.21</b>	<b>54</b>			
		252	200,703.31							<b>GRAND TOTALS</b>						<b>218,978.21</b>	<b>287</b>			
<b>AVERAGE COST PER RACING DAY</b>																				
			\$ 140.48							State Supervision at Tracks						\$159.63				
			49.40							State General Salaries and Misc. Expense						60.10				
			<b>\$ 189.88</b>							<b>Total Average Cost Per Racing Day</b>						<b>220.74</b>				



FLORIDA STATE RACING COMMISSION

COMPARATIVE DATA

1944-1945 SEASON

1945-1946 SEASON

2% Comm. on Pari-Mutual Sales	State Revenue From Breaks	Total State Revenue	Track Comm. on Pari-Mutual Sales	Track Revenue From Breaks	Distributed to Public	No. Racing Days	GREYHOUND RACING ASSOCIATIONS	No. Racing Days	Attendance	Pari-Mutual Sales	Tax on Attendance	5% Comm. on Pari-Mutual Sales	2% Comm. on Pari-Mutual Sales	State Revenue From Breaks	Total State Revenue	Track Comm. on Pari-Mutual Sales	Track Revenue From Breaks	Distributed to Public	
<b>SUMMER SEASON</b>																			
							Associated Outdoor Clubs, Inc.	60	98,724	\$ 4,377,920.00	\$ 9,872.40	\$ 131,337.60	\$ 87,558.40	\$ 13,713.40	\$ 242,481.80	\$ 525,350.40	\$ 13,713.10	\$ 3,606,247.10	
							Broward County Kennel Club, Inc.	46	126,384	4,656,925.00	12,638.40	139,707.75	93,138.50	17,960.54	263,445.19	558,831.00	17,960.31	3,829,326.90	
							Jacksonville Kennel Club, Inc.	17	30,783	1,389,932.00	3,078.30	41,697.96	27,798.64	7,703.03	80,277.93	166,791.84	7,702.93	1,138,237.60	
							Miami Beach Kennel Club, Inc.	40	133,709	4,692,848.00	13,370.90	140,785.44	93,856.96	18,580.86	266,594.16	563,141.76	18,580.68	3,857,902.30	
							Palm Beach Kennel Club, Inc.	39	55,386	1,277,683.00	5,765.40	38,330.49	25,553.66	5,372.47	75,022.02	153,321.96	5,372.32	1,049,732.10	
							Sanford-Orlando Kennel Club, Inc.	23	16,792	770,370.00	1,679.20	23,111.10	15,407.40	3,733.52	43,931.22	92,444.40	3,733.38	631,940.20	
							<b>TOTAL GREYHOUND TRACKS</b>	<b>225</b>	<b>461,778</b>	<b>\$ 17,165,678.00</b>	<b>\$ 46,404.60</b>	<b>\$ 514,970.34</b>	<b>\$ 343,313.56</b>	<b>\$ 67,063.82</b>	<b>\$ 971,752.32</b>	<b>\$ 2,059,881.36</b>	<b>\$ 67,062.72</b>	<b>\$ 14,113,386.20</b>	
<b>WINTER SEASON</b>																			
		\$ 5,679.21	\$ 20,666.04	\$ 1,321.95	\$ 145,062.50	2	Associated Outdoor Clubs, Inc.	90	177,567	\$ 7,283,998.00	\$ 17,756.70	\$ 218,519.94	\$ 145,679.96	\$ 22,078.10	\$ 404,034.70	\$ 874,079.76	\$ 22,077.54	\$ 6,001,562.70	
\$ 94,908.34	\$ 23,084.45	274,160.10	569,450.04	23,084.26	3,892,527.40	40	Biscayne Kennel Club, Inc.	80	327,876	10,817,398.00	32,787.60	324,521.94	216,347.96	42,453.80	616,111.30	1,298,087.76	42,453.44	8,893,533.10	
		18,834.58	67,866.72	5,188.60	475,534.00	9	Broward County Kennel Club, Inc.	90	225,742	7,009,246.00	22,574.20	210,277.38	140,184.92	26,938.04	399,974.54	841,109.52	26,937.64	5,763,798.50	
52,625.78	15,722.71	160,071.21	337,328.88	18,361.81	2,302,702.60	45	Jacksonville Kennel Club, Inc.	90	141,442	5,656,348.00	14,144.20	169,690.44	113,126.96	32,264.13	329,225.73	678,761.76	32,263.61	4,630,241.10	
		10,820.31	37,913.64	2,551.05	266,003.90	2	Miami Beach Kennel Club, Inc.	80	415,226	12,791,593.00	41,522.60	383,747.79	255,831.86	46,663.40	727,765.65	1,534,991.16	46,662.99	10,523,695.80	
Did NOT OPERATE							Orange Park Kennel Club, Inc.	65	87,357	3,954,892.00	8,735.70	118,646.76	79,097.84	22,604.80	229,085.10	474,587.04	22,604.46	3,237,351.10	
Did NOT OPERATE							Palm Beach Kennel Club, Inc.	90	165,031	4,473,948.00	17,645.50	134,218.44	89,478.96	19,334.85	260,677.75	536,873.76	19,334.39	3,674,707.60	
Did NOT OPERATE							Pensacola Kennel Club, Inc.	90	80,691	2,702,205.00	8,069.10	81,066.15	54,044.10	12,619.73	155,799.08	324,264.60	12,619.22	2,217,591.20	
18,377.36	4,670.20	56,820.31	123,695.40	5,737.89	847,390.30	40	Sanford-Orlando Kennel Club, Inc.	90	99,428	3,541,824.00	9,942.80	106,254.72	70,836.48	16,197.14	203,231.14	425,018.88	16,196.68	2,907,320.10	
Did NOT OPERATE							Sarasota Kennel Club, Inc.	72	42,433	1,881,552.00	4,243.30	56,446.56	37,631.04	7,806.87	106,127.77	225,786.24	7,806.49	1,546,074.80	
		85,497.97	318,395.88	21,283.55	2,234,020.60	35	St. Petersburg Kennel Club, Inc.	90	220,167	7,727,350.00	22,016.70	231,820.50	154,547.00	32,195.64	440,579.84	927,282.00	32,195.06	6,349,309.80	
		212,963.42	776,845.68	63,365.00	5,439,291.90	42	West Flagler Kennel Club, Inc.	80	447,750	14,095,401.00	44,775.00	422,862.03	281,908.02	53,451.88	802,996.93	1,691,448.12	53,451.45	11,592,279.50	
\$ 165,911.48	\$ 43,477.36	\$ 824,847.11	\$ 2,252,162.28	\$ 140,894.11	\$ 15,602,533.20	215	<b>TOTAL GREYHOUND TRACKS</b>	<b>1007</b>	<b>2,430,710</b>	<b>\$ 81,935,755.00</b>	<b>\$ 244,213.40</b>	<b>\$ 2,458,072.65</b>	<b>\$ 1,638,715.10</b>	<b>\$ 334,608.38</b>	<b>\$ 4,675,609.53</b>	<b>\$ 9,832,290.60</b>	<b>\$ 334,602.97</b>	<b>\$ 67,337,465.30</b>	
<b>TOTAL GREYHOUND TRACKS FOR SUMMER and WINTER</b>																			
		\$ 195,629.95	\$ 671,951.40	\$ 35,311.35	\$ 4,724,344.40	90	Jai-Alai Fronton	90	312,785	\$ 4,296,302.00	\$ 31,278.50	\$ 128,889.06	\$ 85,926.04	\$ 14,271.41	\$ 260,365.01	\$ 515,184.19	\$ 14,271.00	\$ 3,537,760.30	
\$ 165,911.48	\$ 43,477.36	\$ 1,020,477.06	\$ 2,924,113.68	\$ 176,205.46	\$ 20,326,877.60	305	<b>TOTAL GREYHOUND TRACKS AND FRONTON</b>	<b>1322</b>	<b>3,205,273</b>	<b>\$ 103,397,735.00</b>	<b>\$ 321,896.50</b>	<b>\$ 3,101,932.05</b>	<b>\$ 2,067,954.70</b>	<b>\$ 415,943.61</b>	<b>\$ 5,907,726.86</b>	<b>\$ 12,407,356.15</b>	<b>\$ 415,936.69</b>	<b>\$ 84,988,611.80</b>	
<b>HORSE RACING ASSOCIATIONS</b>																			
						8	Gables Racing Association, Inc.	40	289,989	\$ 26,273,471.00	\$ 51,439.60	\$ 788,204.13	\$ 1,313,673.55	\$ 172,950.75	\$ 2,326,268.03	\$ 1,839,142.97		\$ 22,159,499.60	
\$ 258,294.65	\$ 32,046.00	\$ 456,585.80	\$ 361,612.51		\$ 4,358,963.05	20	Gulfstream Park Racing Assoc., Inc.	40	328,460	28,592,076.00	58,803.03	857,762.28	1,429,603.80	183,962.90	2,530,132.01	2,001,445.32		24,119,301.70	
281,902.50	41,988.70	505,640.92	394,663.50		4,750,597.10	40	Hialeah Race Course, Inc.	40	624,362	53,308,007.00	123,524.97	1,599,240.21	2,665,400.35	353,459.70	4,741,625.23	3,731,560.49		44,958,346.25	
Did NOT OPERATE							<b>TOTAL HORSE TRACKS</b>	<b>120</b>	<b>1,242,811</b>	<b>\$ 108,173,554.00</b>	<b>\$ 233,767.60</b>	<b>\$ 3,245,206.62</b>	<b>\$ 5,408,677.70</b>	<b>\$ 710,373.35</b>	<b>\$ 9,598,025.27</b>	<b>\$ 7,572,148.78</b>		<b>\$ 91,237,147.55</b>	
\$ 706,108.63	\$ 117,512.06	\$ 1,982,703.78	\$ 3,680,389.69	\$ 176,205.46	\$ 29,436,437.75	333	<b>TOTAL ALL TRACKS</b>	<b>1442</b>	<b>4,448,084</b>	<b>\$ 211,571,289.00</b>	<b>\$ 555,664.10</b>	<b>\$ 6,347,138.67</b>	<b>\$ 7,476,632.40</b>	<b>\$ 1,126,316.96</b>	<b>\$ 15,505,752.13</b>	<b>\$ 19,979,504.93</b>	<b>\$ 415,936.69</b>	<b>\$ 176,225,759.35</b>	
		\$ 21,901.50					Occupational Licenses								\$ 42,204.00				
		2,289.00					Greyhound Registrations								3,923.00				
		560.00					Assumed Name Registrations								1,230.00				
		386.00					Color Registrations								876.00				
		12.80					Miscellaneous Income								48.81				
		<u>\$2,007,853.08</u>					<b>TOTAL RECEIPTS</b>								<u>\$15,554,033.94</u>				

**FLORIDA STATE RACING COMMISSION  
COMPARATIVE DATA**

1939-40 Season

1940-41 Season

Tracks Revenue From Breaks	Tracks Revenue From Pari-Mutuel Sales	No. State Employees	State Supervision Expense at Tracks	Total State Revenue	Tax on Pari-Mutuel Sales	Tax on Attendance	Pari-Mutuel Sales	Attendance	No. Racing Days	GREYHOUND RACING ASSOCIATIONS	No. Racing Days	Attendance	Pari-Mutuel Sales	Tax on Attendance	Tax on Pari-Mutuel Sales	Total State Revenue	State sion at
\$ 16,620.75	\$ 192,385.32	12	\$ 9,156.00	\$ 60,544.63	\$ 48,096.33	\$ 12,448.30	\$ 1,603,211.00	124,483	90	Biscayne Kennel Club, Inc.	90	161,994	\$ 2,112,390.00	\$ 16,199.40	\$ 63,371.70	\$ 79,571.10	\$ 10
25,405.80	267,276.24	12	9,866.00	84,243.36	66,819.06	17,424.30	2,227,302.00	174,243	90	Broward County Kennel Club, Inc.	90	192,836	2,576,664.00	19,283.60	77,299.92	96,583.52	10
19,255.10	217,263.12	12	9,865.00	66,174.18	54,315.78	11,858.40	1,810,526.00	118,584	90	Jacksonville Kennel Club, Inc.	90	127,472	2,217,125.00	12,747.20	66,513.75	79,260.95	11
46,490.10	537,551.28	14	12,070.00	161,588.52	134,387.82	27,200.70	4,479,594.00	272,007	90	Miami Beach Kennel Club, Inc.	90	297,019	4,846,091.00	29,701.90	145,382.73	175,084.63	13
16,541.30	163,151.52	11	8,742.00	51,999.78	40,787.88	11,211.90	1,359,596.00	112,119	85	Palm Beach Kennel Club, Inc.	86	128,374	1,593,785.00	13,071.85	47,813.55	60,885.40	9
36,323.15	352,913.64	13	11,210.00	105,717.01	88,228.41	17,488.60	2,940,947.00	174,886	90	St. Petersburg Kennel Club, Inc.	90	191,739	3,260,911.00	19,173.90	97,827.33	117,001.23	13
10,319.10	109,854.72	11	9,064.00	33,052.28	27,463.68	5,588.60	915,456.00	55,886	90	Sanford-Orlando Kennel Club, Inc.	90	58,616	1,053,427.00	5,861.60	31,602.81	37,464.41	11
2,487.95	22,467.96	11	6,798.00	7,147.19	5,616.99	1,530.20	187,233.00	15,302	66	Sarasota Kennel Club, Inc.	Did not operate 1940-41 Season						
45,194.80	520,244.64	14	11,180.00	162,253.26	130,061.16	32,192.10	4,335,372.00	321,921	90	West Flagler Kennel Club, Inc.	90	334,241	4,546,934.00	33,424.10	136,408.02	169,832.12	12
12,845.75	206,638.92	13	11,153.00	59,803.13	51,659.73	8,143.40	1,721,991.00	81,434	90	Associated Out-Door Clubs, Inc.	90	88,848	1,972,620.00	8,884.80	59,178.60	68,063.40	11
\$231,483.80	\$2,589,747.36	123	\$ 99,104.00	\$ 792,523.34	\$ 647,436.84	\$145,086.50	\$21,581,228.00	1,450,865	871	<b>TOTALS</b>	806	1,581,139	\$24,179,947.00	\$158,348.35	\$ 725,398.41	\$ 883,746.76	\$10
<b>HORSE RACING ASSOCIATIONS</b>																	
\$106,691.20	\$1,110,200.00	45	\$ 20,201.00	\$ 532,880.76	\$ 475,800.00	\$ 57,080.76	\$15,860,000.00	349,948	50	Gables Racing Association, Inc.	50	380,996	\$17,491,139.00	\$ 62,480.44	\$ 524,734.17	\$ 587,214.61	\$ 2
184,474.95	1,814,951.32	55	22,105.00	894,919.78	777,836.28	117,083.50	25,927,876.00	531,962	46	Miami Jockey Club	46	530,585	25,457,259.00	112,627.82	763,717.77	876,345.59	2
\$291,166.15	\$2,925,151.32	100	\$ 42,306.00	\$1,427,800.54	\$1,253,636.28	\$174,164.26	\$41,787,876.00	881,910	96	<b>TOTALS</b>	96	911,581	\$42,948,398.00	\$175,108.26	\$1,288,451.94	\$1,463,560.20	\$ 4
\$ 8,991.65	\$ 122,312.76	8	\$ 7,072.00	\$ 49,406.69	\$ 30,578.19	\$ 18,828.50	\$ 1,019,273.00	184,491	90	<b>JAI-ALAI FRONTON</b>	90	202,744	\$ 1,151,857.00	\$ 20,921.52	\$ 34,555.71	\$ 55,477.23	\$
<b>SUMMARY OF ALL ASSOCIATIONS</b>																	
\$231,483.80	\$2,589,747.36	123	\$ 99,104.00	\$ 792,523.34	\$ 647,436.84	\$145,086.50	\$21,581,228.00	1,450,865	871	Dog Racing Associations	806	1,581,139	\$24,179,947.00	\$158,348.35	\$ 725,398.41	\$ 883,746.76	\$10
291,166.15	2,925,151.32	100	42,306.00	1,427,800.54	1,253,636.28	174,164.26	41,787,876.00	881,910	96	Horse Racing Associations	96	911,581	42,948,398.00	175,108.26	1,288,451.94	1,463,560.20	4
8,991.65	122,312.76	8	7,072.00	49,406.69	30,578.19	18,828.50	1,019,273.00	184,491	90	Jai-Alai Fronton	90	202,744	1,151,857.00	20,921.52	34,555.71	55,477.23	
\$531,641.60	\$5,637,211.44	231	\$148,482.00	\$2,269,730.57	\$1,931,651.31	\$338,079.26	\$64,388,377.00	2,517,266	1057	<b>GRAND TOTALS</b>	992	2,695,464	\$68,280,202.00	\$354,378.13	\$2,048,406.06	\$2,402,784.19	\$15
				\$ 27,761.75						Receipts from Occupational Licenses						\$ 29,463.25	
				3,707.00						Receipts from Greyhound Registrations						3,136.00	
				956.00						Receipts from Assumed Name and Color Reg.						985.00	
				664.36						Receipts from Miscellaneous Sources						5.65	
				\$2,302,819.68						<b>TOTAL RECEIPTS</b>						\$2,436,374.09	
<b>OTHER DISBURSEMENTS</b>																	
		5	\$ 16,263.85							Commissioners—Salaries and Expenses							\$
		16	25,595.05							Gen. Office, Dept. Heads—Salaries and Expenses							
			10,362.41							Stationery, Ptg., Office Rent and Misc. Expense							
		21	\$ 52,221.31							<b>TOTALS</b>							
		252	200,703.31							<b>GRAND TOTALS</b>							
<b>AVERAGE COST PER RACING DAY</b>																	
			\$ 140.48							State Supervision at Tracks							
			49.40							State General Salaries and Misc. Expense							
			\$ 189.88							<b>Total Average Cost Per Racing Day</b>							



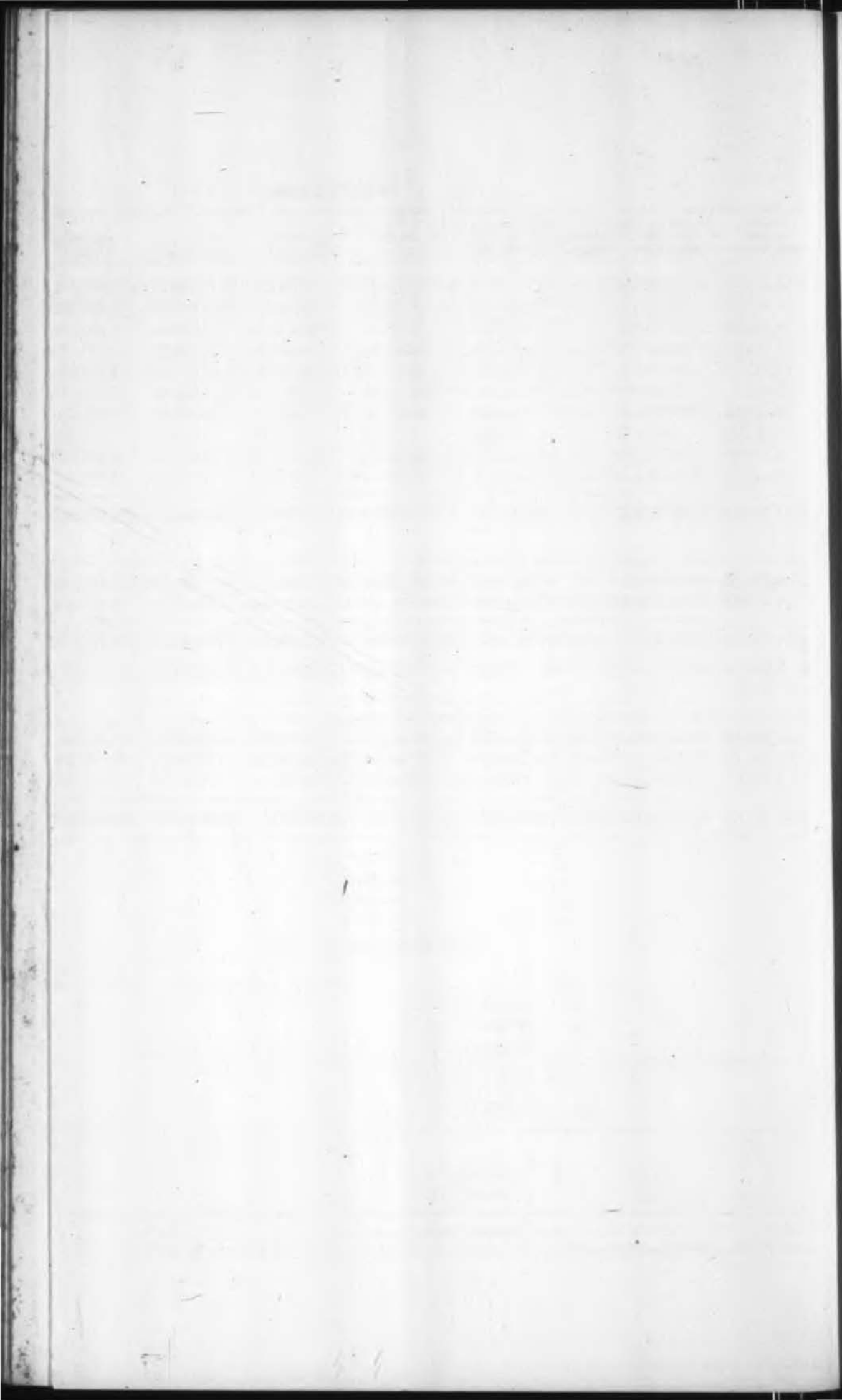
**FLORIDA STATE RACING COMMISSION  
COMPARATIVE DATA**

1939-40 Season

1940-41 Season

State Supervision Expense at Tracks	Total State Revenue	Tax on Pari-Mutuel Sales	Tax on Attendance	Pari-Mutuel Sales	Attendance	No. Racing Days	GREYHOUND RACING ASSOCIATIONS	No. Racing Days	Attendance	Pari-Mutuel Sales	Tax on Attendance	Tax on Pari-Mutuel Sales	Total State Revenue	State Supervision Expense at Tracks	No. State Employees	Tracks Revenue From Pari-Mutuel Sales	Tracks Revenue From Breaks	
9,156.00	\$ 60,544.63	\$ 48,096.33	\$ 12,448.30	\$ 1,603,211.00	124,483	90	Biscayne Kennel Club, Inc.	90	161,994	\$ 2,112,390.00	\$ 16,199.40	\$ 63,371.70	\$ 79,571.10	\$ 10,828.00	13	\$ 253,486.80	\$ 18,641.20	
9,866.00	84,243.36	66,819.06	17,424.30	2,227,302.00	174,243	90	Broward County Kennel Club, Inc.	90	192,836	2,576,664.00	19,283.60	77,299.92	96,583.52	10,823.00	13	309,199.68	26,624.70	
9,865.00	66,174.18	54,315.78	11,858.40	1,810,526.00	118,584	90	Jacksonville Kennel Club, Inc.	90	127,472	2,217,125.00	12,747.20	66,513.75	79,260.95	11,213.00	13	266,055.00	24,375.35	
12,070.00	161,588.52	134,387.82	27,200.70	4,479,594.00	272,007	90	Miami Beach Kennel Club, Inc.	90	297,019	4,846,091.00	29,701.90	145,382.73	175,084.63	13,009.00	16	581,530.92	45,555.95	
8,742.00	51,999.78	40,787.88	11,211.90	1,359,596.00	112,119	85	Palm Beach Kennel Club, Inc.	86	128,374	1,593,785.00	13,071.85	47,813.55	60,885.40	9,522.00	12	191,254.20	17,132.25	
11,210.00	105,717.01	88,228.41	17,488.60	2,940,947.00	174,886	90	St. Petersburg Kennel Club, Inc.	90	191,739	3,260,911.00	19,173.90	97,827.33	117,001.23	13,567.00	12	391,309.32	40,902.55	
9,064.00	33,052.28	27,463.68	5,588.60	915,456.00	55,886	90	Sanford-Orlando Kennel Club, Inc.	90	58,616	1,053,427.00	5,861.60	31,602.81	37,464.41	11,116.00	13	126,411.24	11,268.35	
6,798.00	7,147.19	5,616.99	1,530.20	187,233.00	15,302	66	Sarasota Kennel Club, Inc.	Did not operate 1940-41 Season										
11,180.00	162,253.26	130,061.16	32,192.10	4,335,372.00	321,921	90	West Flagler Kennel Club, Inc.	90	334,241	4,546,934.00	33,424.10	136,408.02	169,832.12	12,461.00	15	545,632.08	46,915.30	
11,153.00	59,803.13	51,659.73	8,143.40	1,721,991.00	81,434	90	Associated Out-Door Clubs, Inc.	90	88,848	1,972,620.00	8,884.80	59,178.60	68,063.40	13,410.00	14	236,714.40	14,001.70	
99,104.00	\$ 792,523.34	\$ 647,436.84	\$ 145,086.50	\$ 21,581,228.00	1,450,865	871	<b>TOTALS</b>	806	1,581,139	\$ 24,179,947.00	\$ 158,348.35	\$ 725,398.41	\$ 883,746.76	\$ 105,949.00	121	\$ 2,901,593.64	\$ 245,417.35	
<b>HORSE RACING ASSOCIATIONS</b>																		
20,201.00	\$ 532,880.76	\$ 475,800.00	\$ 57,080.76	\$ 15,860,000.00	349,948	50	Gables Racing Association, Inc.	50	380,996	\$ 17,491,139.00	\$ 62,480.44	\$ 524,734.17	\$ 587,214.61	\$ 21,044.00	45	\$ 1,224,379.73	\$ 104,506.10	
22,105.00	894,919.78	777,836.28	117,083.50	25,927,876.00	531,962	46	Miami Jockey Club	46	530,585	25,457,259.00	112,627.82	763,717.77	876,345.59	23,531.00	58	1,782,008.13	180,166.45	
42,306.00	\$ 1,427,800.54	\$ 1,253,636.28	\$ 174,164.26	\$ 41,787,876.00	881,910	96	<b>TOTALS</b>	96	911,581	\$ 42,948,398.00	\$ 175,108.26	\$ 1,288,451.94	\$ 1,463,560.20	\$ 44,575.00	103	\$ 3,006,387.86	\$ 284,672.55	
7,072.00	\$ 49,406.69	\$ 30,578.19	\$ 18,828.50	\$ 1,019,273.00	184,491	90	<b>JAI-ALAI FRONTON</b>	90	202,744	\$ 1,151,857.00	\$ 20,921.52	\$ 34,555.71	\$ 55,477.23	\$ 7,836.00	9	\$ 138,222.84	\$ 10,183.65	
<b>SUMMARY OF ALL ASSOCIATIONS</b>																		
99,104.00	\$ 792,523.34	\$ 647,436.84	\$ 145,086.50	\$ 21,581,228.00	1,450,865	871	Dog Racing Associations	806	1,581,139	\$ 24,179,947.00	\$ 158,348.35	\$ 725,398.41	\$ 883,746.76	\$ 105,949.00	121	\$ 2,901,593.64	\$ 245,417.35	
42,306.00	1,427,800.54	1,253,636.28	174,164.26	41,787,876.00	881,910	96	Horse Racing Associations	96	911,581	42,948,398.00	175,108.26	1,288,451.94	1,463,560.20	44,575.00	103	3,006,387.86	284,672.55	
7,072.00	49,406.69	30,578.19	18,828.50	1,019,273.00	184,491	90	Jai-Alai Fronton	90	202,744	1,151,857.00	20,921.52	34,555.71	55,477.23	7,836.00	9	138,222.84	10,183.65	
148,482.00	\$ 2,269,730.57	\$ 1,931,651.31	\$ 338,079.26	\$ 64,388,377.00	2,517,266	1057	<b>GRAND TOTALS</b>	992	2,695,464	\$ 68,280,202.00	\$ 354,378.13	\$ 2,048,406.06	\$ 2,402,784.19	\$ 158,360.00	233	\$ 6,046,204.34	\$ 540,273.55	
\$ 27,761.75	Receipts from Occupational Licenses																\$ 29,463.25	
3,707.00	Receipts from Greyhound Registrations																3,136.00	
956.00	Receipts from Assumed Name and Color Reg.																985.00	
664.36	Receipts from Miscellaneous Sources																5.65	
\$ 2,302,819.68	<b>TOTAL RECEIPTS</b>																\$ 2,436,374.09	
<b>OTHER DISBURSEMENTS</b>																		
16,263.85	Commissioners—Salaries and Expenses														\$ 17,734.26	10		
25,595.05	Gen. Office, Dept. Heads—Salaries and Expenses														31,350.25	44		
10,362.41	Stationery, Ptg., Office Rent and Misc. Expense														11,533.70			
52,221.31	<b>TOTALS</b>																60,618.21	54
200,703.31	<b>GRAND TOTALS</b>																218,978.21	287
<b>AVERAGE COST PER RACING DAY</b>																		
140.48	State Supervision at Tracks														\$ 159.63			
49.40	State General Salaries and Misc. Expense														60.10			
189.88	<b>Total Average Cost Per Racing Day</b>																220.74	





ASSOCIATED OUT-DOOR CLUBS, INC.

90 Racing Days—105 Performances—December 27, 1940, to April 10, 1941, Inclusive

Pool Classification	Amount Wagered	\$5.00 Wagers		\$2.00 Wagers	
		Number	Amount	Number	Amount
Daily Double .....	\$ 176,698.00	-----	-----	88,349	\$ 176,698.00
Quiniela .....	1,091,748.00	-----	-----	545,874	1,091,748.00
Straight .....	261,540.00	10,498	\$ 52,490.00	104,525	209,050.00
Place .....	219,649.00	6,533	32,665.00	93,492	186,984.00
Show .....	222,985.00	3,705	18,525.00	102,230	204,460.00
<b>Totals .....</b>	<b>\$1,972,620.00</b>	<b>20,736</b>	<b>\$103,680.00</b>	<b>934,470</b>	<b>\$1,868,940.00</b>

==  
Pari-Mutuel  
Handle  
\$1,972,620.00

STATE REVENUE

3% on P-M Handle.....\$ 59,178.60  
Tax on Admissions..... 8,884.80  
  
Totals.....\$ 68,063.40

Total Commission @ 15% .....\$295,893.00  
Total Breaks ..... 14,001.70

\$309,894.70

Total Attendance ..... 88,848  
Average Performance Attendance ..... 846  
Average Performance P-M Handle .....\$ 18,786.00  
Average Wager per Capita .....\$ 22.20  
Percentage of Daily Double to Total Pool ..... .0895  
Percentage of Quiniela to Total Pool ..... .5585

State Commission @ 3% .....\$ 59,178.60  
Association's Com. @ 12% ..... 236,714.40  
Association's Breaks ..... 14,001.70

\$309,894.70

BISCAYNE KENNEL CLUB, Inc.

90 Racing Days—December 25, 1940 to April 8, 1941, Inclusive

Pool Classification	Amount Wagered	\$5.00 Wagers		\$2.00 Wagers	
		Number	Amount	Number	Amount
Daily Double .....	\$ 59,208.00	.....	.....	29,604	\$ 59,208.00
Quiniela .....	1,010,158.00	.....	.....	505,079	1,010,158.00
Straight .....	356,937.00	7,343	\$ 36,715.00	160,111	320,222.00
Place .....	276,913.00	3,349	16,745.00	130,084	260,168.00
Show .....	409,174.00	3,998	19,990.00	194,592	389,184.00
<b>Totals .....</b>	<b>\$2,112,390.00</b>	<b>14,690</b>	<b>\$ 73,450.00</b>	<b>1,019,470</b>	<b>\$2,038,940.00</b>

Pari-Mutuel Handle

\$2,112,390.00

STATE REVENUE

3% on P-M Handle .....\$ 63,371.70

Tax on Admissions ..... 16,199.40

**Totals .....\$ 79,571.10**

Total Attendance ..... 161,994

Average Daily Attendance ..... 1,799

Average Daily P-M Handle .....\$ 23,470.00

Average Wager Per Capita .....\$ 13.03

Percentage of Daily Double to Total Pool ..... .0280

Percentage of Quiniela to Total Pool ..... .4782

Total Commission @ 15% .....\$316,858.50

Total Breaks ..... 18,641.20

**\$335,499.70**

State's Commission @ 3% .....\$ 63,371.70

Association's Com. @ 12% ..... 253,486.80

Association's Breaks ..... 18,641.20

**\$335,499.70**

**BROWARD COUNTY KENNEL CLUB, Inc.**  
 90 Days—December 2, 1940 to March 15, 1941, Inclusive

Pool Classification	Amount Wagered	\$5.00 Wagers		\$2.00 Wagers		\$1.00 Wagers	
		Number	Amount	Number	Amount	Number	Amount
Daily Double .....	\$ 78,398.00	.....	.....	39,199	\$ 78,398.00	.....	.....
Quiniela .....	1,153,926.00	.....	.....	576,963	1,153,926.00	.....	.....
Straight .....	573,666.00	27,242	\$136,210.00	168,826	337,652.00	99,804	\$ 99,804.00
Place .....	364,216.00	11,724	58,620.00	102,896	205,792.00	99,804	99,804.00
Show .....	406,458.00	9,400	47,000.00	129,827	259,654.00	99,804	99,804.00
<b>Totals .....</b>	<b>\$2,576,664.00</b>	<b>48,366</b>	<b>\$241,830.00</b>	<b>1,017,711</b>	<b>\$2,035,422.00</b>	<b>299,412</b>	<b>\$299,412.00</b>

13

Pari-Mutuel Handle  
 \$2,576,664.00

**STATE REVENUE**

3% on P-M Handle .....	\$ 77,299.92
Tax on Admissions .....	19,283.60
<b>Totals.....</b>	<b>\$ 96,583.52</b>

Total Commission @ 15% .....	\$386,499.60
Total Breaks .....	26,624.70
	<b>\$413,124.30</b>

Total Attendance .....	192,836
Average Daily Attendance .....	2,142
Average Daily P-M Handle .....	\$ 28,629.00
Average Wager Per Capita .....	\$ 13.36
Percentage of Daily Double to Total Pool .....	.0304
Percentage of Quiniela to Total Pool .....	.4478

State's Commission @ 3% .....	\$ 77,299.92
Association's Com. @ 12% .....	309,199.68
Association's Breaks .....	26,624.70
	<b>\$413,124.30</b>

JACKSONVILLE KENNEL CLUB, Inc.

90 Racing Days—91 Performances—December 27, 1940 to April 10, 1941, Inclusive

Pool Classification	Amount Wagered	\$5.00 Wagers		\$2.00 Wagers	
		Number	Amount	Number	Amount
Daily Double	\$ 244,840.00	-----	-----	122,420	\$244,840.00
Quiniela	341,074.00	-----	-----	170,537	341,074.00
Straight	722,724.00	33,148	\$165,740.00	278,492	556,984.00
Place	529,943.00	17,509	87,545.00	221,199	442,398.00
Show	378,544.00	7,648	38,240.00	170,152	340,304.00
<b>Totals</b>	<b>\$2,217,125.00</b>	<b>58,305</b>	<b>\$291,525.00</b>	<b>962,800</b>	<b>\$1,925,600.00</b>

14

Pari-Mutuel Handle

\$2,217,125.00

STATE REVENUE

3% on P-M Handle .....\$ 66,513.75

Tax on Admissions ..... 12,747.20

**Totals.....\$ 79,260.95**

Total Commission @ 15% .....\$332,568.75

Total Breaks ..... 24,375.35

**\$356,944.10**

Total Attendance ..... 127,472

Average Performance Attendance ..... 1,400

Average Performance P-M Handle .....\$ 24,364.00

Average Wager Per Capita .....\$ 17.31

Percentage of Daily Double to Total Pool ..... .1104

Percentage of Quiniela to Total Pool ..... .1538

State's Commission @ 3% .....\$ 66,513.75

Association's Com. @ 12% ..... 266,055.00

Association's Breaks ..... 24,375.35

**\$356,944.10**

## MIAMI BEACH KENNEL CLUB

90 Racing Days—December 27, 1940 to April 10, 1941, Inclusive

Pool Classification	Amount Wagered	\$5.00 Wagers		\$2.00 Wagers	
		Number	Amount	Number	Amount
Daily Double .....	\$ 112,600.00	.....	.....	56,300	\$ 112,600.00
Quiniela .....	2,351,660.00	.....	.....	1,175,830	2,351,660.00
Straight .....	945,157.00	39,395	\$196,975.00	374,091	748,182.00
Place .....	639,865.00	20,913	104,565.00	267,650	535,300.00
Show .....	796,809.00	17,153	85,765.00	355,522	711,044.00
<b>Totals .....</b>	<b>\$4,846,091.00</b>	<b>77,461</b>	<b>\$387,305.00</b>	<b>2,229,393</b>	<b>\$4,458,786.00</b>

15

Pari-Mutuel  
Handle

\$4,846,091.00

### STATE REVENUE

3% on P-M Handle .....\$145,382.73

Tax on Admissions ..... 29,701.90

**Totals.....\$175,084.63**

Total Commission @ 15% .....\$726,913.65

Total Breaks ..... 45,555.95

**\$772,469.60**

Total Attendance ..... 297,019

Average Daily Attendance ..... 3,300

Average Daily P-M Handle .....\$ 53,845.00

Average Wager Per Capita .....\$ 16.31

Percentage of Daily Double to Total Pool ..... .0232

Percentage of Quiniela to Total Pool ..... .4832

State's Commission @ 3% .....\$145,382.73

Association's Com. @ 12% ..... 581,530.92

Association's Breaks ..... 45,555.95

**\$772,469.60**



PALM BEACH KENNEL CLUB, Inc.

86 Racing Days—January 1, 1941 to April 10, 1941, Inclusive

Pool Classification	Amount Wagered	\$5.00 Wagers		\$2.00 Wagers		\$1.00 Wagers	
		Number	Amount	Number	Amount	Number	Amount
Daily Double	\$ 152,662.00	-----	-----	76,331	\$ 152,662.00	-----	-----
Quiniela	335,736.00	-----	-----	167,868	335,736.00	-----	-----
Straight	441,333.00	12,518	\$ 62,590.00	141,661	283,322.00	95,421	\$ 95,421.00
Place	334,457.00	5,938	29,690.00	104,673	209,346.00	95,421	95,421.00
Show	329,597.00	4,836	24,180.00	104,998	209,996.00	95,421	95,421.00
Totals	\$1,593,785.00	23,292	\$116,460.00	595,531	\$1,191,062.00	286,263	\$286,263.00

96

Pari-Mutuel Handle	
\$1,593,785.00	
	STATE REVENUE
3% on P-M Handle	\$ 47,813.55
Tax on Admissions	13,071.85
Totals	\$ 60,885.40

Total Attendance	128,374
Average Daily Attendance	1,492
Average Daily P-M Handle	\$ 18,532.00
Average Wager Per Capita	\$ 12.41
Percentage of Daily Double to Total Pool	.0957
Percentage of Quiniela to Total Pool	.2106

Total Commission @ 15%	\$239,067.75
Total Breaks	17,132.25
	\$256,200.00

State's Commission @ 3%	\$ 47,813.55
Association's Com. @ 12%	191,254.20
Association's Breaks	17,132.25
	\$256,200.00

SANFORD-ORLANDO KENNEL CLUB, Inc.

90 Racing Days—December 27, 1940 to April 10, 1941, Inclusive

Pool Classification	Amount Wagered	\$5.00 Wagers		\$2.00 Wagers		\$1.00 Wagers	
		Number	Amount	Number	Amount	Number	Amount
Daily Double	\$ 139,430.00	-----	-----	69,715	\$139,430.00	-----	-----
Quiniela	133,294.00	-----	-----	66,647	133,294.00	-----	-----
Straight	338,734.00	7,024	\$ 35,120.00	120,302	240,604.00	63,010	\$ 63,010.00
Place	251,215.00	3,599	17,995.00	85,105	170,210.00	63,010	63,010.00
Show	190,754.00	1,920	9,600.00	59,072	118,144.00	63,010	63,010.00
<b>Total</b>	<b>\$1,053,427.00</b>	<b>12,543</b>	<b>\$ 62,715.00</b>	<b>400,841</b>	<b>\$801,682.00</b>	<b>189,030</b>	<b>\$189,030.00</b>

17

Pari-Mutuel

Handle

\$1,053,427.00

STATE REVENUE

3% on P-M Handle .....\$31,602.81

Tax on Admissions ..... 5,861.60

**Totals.....\$37,464.41**

Total Attendance ..... 58,616

Average Daily Attendance ..... 651

Average Daily P-M Handle .....\$11,704.00

Average Wager Per Capita .....\$ 17.97

Percentage of Daily Double to Total Pool ..... .1323

Percentage of Quiniela to Total Pool ..... .1265

Total Commission @ 15% .....\$158,014.05

Total Breaks ..... 11,268.35

**\$169,282.40**

State's Commission @ 3% .....\$ 31,602.81

Association's Com. @ 12% ..... 126,411.24

Association's Breaks ..... 11,268.35

**\$169,282.40**

ST. PETERSBURG KENNEL CLUB, Inc.

90 Days—121 Performances—December 27, 1940 to April 10, 1941, Inclusive

Pool Classification	Amount Wagered	\$5.00 Wagers		\$2.00 Wagers	
		Number	Amount	Number	Amount
Daily Double	\$ 682,734.00			341,367	\$ 682,734.00
Straight	1,131,522.00	47,222	\$236,110.00	447,706	895,412.00
Place	774,820.00	23,728	118,640.00	328,090	656,180.00
Show	671,835.00	15,977	79,885.00	295,975	591,950.00
<b>Totals</b>	<b>\$3,260,911.00</b>	<b>86,927</b>	<b>\$434,635.00</b>	<b>1,413,138</b>	<b>\$2,826,276.00</b>

8

Pari-Mutuel  
Handle

\$3,260,911.00

STATE REVENUE

3% on P-M Handle .....\$ 97,827.33

Tax on Admissions ..... 19,173.90

**Totals.....\$117,001.23**

Total Attendance ..... 191,739

Average Performance Attendance ..... 1,584

Average Performance P-M Handle .....\$ 26,949.00

Average Wager Per Capita .....\$ 17.00

Percentage of Daily Double to Total Pool ..... .2093

Total Commission @ 15% .....\$489,136.65

Total Breaks ..... 40,902.55

**\$530,039.20**

State's Commission @ 3% .....\$ 97,827.33

Association's Com. @ 12% ..... 391,309.32

Association's Breaks ..... 40,902.55

**\$530,039.20**

WEST FLAGLER KENNEL CLUB, Inc.

90 Racing Days—December 27, 1940 to April 10, 1941 Inclusive

Pool Classification	Amount Wagered	\$5.00 Wagers		\$2.00 Wagers	
		Number	Amount	Number	Amount
Daily Double	\$ 113,204.00	-----	-----	56,602	\$ 113,204.00
Quiniela	2,109,126.00	-----	-----	1,054,563	2,109,126.00
Straight	844,351.00	35,477	\$177,385.00	333,483	666,966.00
Place	610,212.00	16,282	81,410.00	264,401	528,802.00
Show	870,041.00	18,923	94,615.00	387,713	775,426.00
Totals	\$4,546,934.00	70,682	\$353,410.00	2,096,762	\$4,193,524.00

61

Pari-Mutuel Handle

\$4,546,934.00

STATE REVENUE

3% on P-M Handle	\$136,408.02
Tax on Admissions	33,424.10
<b>Totals</b>	<b>\$169,832.12</b>

Total Commission @ 15%	\$682,040.10
Total Breaks	46,915.30

\$728,955.40

Total Attendance	334,241
Average Daily Attendance	3,713
Average Daily P-M Handle	\$ 50,521.00
Average Wager Per Capita	\$ 13.60
Percentage of Daily Double to Total Pool	.0248
Percentage of Quiniela to Total Pool	.4640

State's Commission @ 3%	\$136,408.02
Association's Com. @ 12%	545,632.08
Association's Breaks	46,915.30

\$728,955.40

FRONTON EXHIBITION COMPANY, INC.

90 Racing Days—December 25, 1940 to April 8, 1941, Inclusive

Pool Classification	Amount Wagered	\$5.00 Wagers		\$2.00 Wagers		\$1.00 Wagers	
		Number	Amount	Number	Amount	Number	Amount
Daily Double	\$ 97,292.00	-----	-----	48,646	\$ 97,292.00	-----	-----
Quiniela	404,116.00	-----	-----	202,058	404,116.00	-----	-----
Straight	258,241.00	4,959	\$24,795.00	74,611	149,222.00	84,224	\$ 84,224.00
Place	203,146.00	2,099	10,495.00	54,215	108,430.00	84,221	84,221.00
Show	189,062.00	1,967	9,835.00	47,503	95,006.00	84,221	84,221.00
Totals	\$1,151,857.00	9,025	\$45,125.00	427,033	\$854,066.00	252,666	\$252,666.00

20

Pari-Mutuel Handle  
\$1,151,857.00

**STATE REVENUE**

3% on P-M Handle	\$34,555.71
Tax on Admissions	20,921.52
<b>Totals</b>	<b>\$55,477.23</b>

Total Attendance	202,744
Average Daily Attendance	2,252
Average Daily P-M Handle	\$12,798.00
Average Wager Per Capita	\$ 5.18
Percentage of Daily Double to Total Pool	.0844
Percentage of Quiniela to Total Pool	.3508

Total Commission @ 15%	\$172,778.55
Total Breaks	10,183.65
	<b>\$182,962.20</b>

State's Commission @ 3%	\$ 34,555.71
Association's Com. @ 12%	138,222.84
Association's Breaks	10,183.65
	<b>\$182,962.20</b>



GABLES RACING ASSOCIATION, Inc.—WINTER MEETING

16 Days—December 20, 1940 to January 7, 1941, Inclusive

Pool Classification	Amount Wagered	\$100.00 Wagers		\$50.00 Wagers		\$10.00 Wagers		\$5.00 Wagers		\$2.00 Wagers	
		Number	Amount	Number	Amount	Number	Amount	Number	Amount	Number	Amount
Daily Double	\$ 207,544.00									103,772	\$ 207,544.00
Straight	2,255,625.00	1,070	\$ 107,000.00	4,593	\$ 229,650.00	68,045	\$ 680,450.00	83,271	\$ 416,355.00	411,085	822,170.00
Place	964,329.00	391	39,100.00	1,202	60,100.00	21,285	212,850.00	30,427	152,135.00	250,072	500,144.00
Show	1,506,700.00	593	59,300.00	1,928	96,400.00	24,852	248,520.00	27,560	137,800.00	268,591	537,182.00
<b>Totals</b>	<b>\$4,506,700.00</b>	<b>2,054</b>	<b>\$ 205,400.00</b>	<b>7,723</b>	<b>\$ 386,150.00</b>	<b>114,182</b>	<b>\$1,141,820.00</b>	<b>141,258</b>	<b>\$ 706,290.00</b>	<b>1,033,520</b>	<b>\$2,067,040.00</b>

Pari-Mutuel  
Handle  
\$4,506,700.00

STATE REVENUE

3% on P-M Handle .....\$135,201.00  
 Tax on Admissions ..... 19,933.52  
**Totals.....\$155,134.52**

Total Commission @ 10% .....\$450,670.00  
 Total Breaks ..... 29,406.40

**\$480,076.40**

Total Attendance ..... 115,204  
 Average Daily Attendance ..... 7,200  
 Average Daily P-M Handle .....\$281,668.00  
 Average Wager Per Capita .....\$ 39.11  
 Percentage Daily Double to Total Pool..... .0460  
 Percentage \$100.00 Wagers to Total Pool ..... .0455  
 Percentage \$ 50.00 Wagers to Total Pool ..... .0856  
 Percentage \$ 10.00 Wagers to Total Pool ..... .2533  
 Percentage \$ 5.00 Wagers to Total Pool ..... .1567  
 Percentage \$ 2.00 Wagers to Total Pool ..... .4586

State's Commission @ 3% .....\$135,201.00  
 Association's Com. @ 7% ..... 315,469.00  
 Association's Breaks ..... 29,406.40

**\$480,076.40**



**GABLES RACING ASSOCIATION, Inc.—SPRING MEETING**  
**34 Racing Days—March 3, 1941 to April 10, 1941, Inclusive**

Pool Classification	Amount Wagered	\$100.00 Wagers		\$50.00 Wagers		\$10.00 Wagers		\$5.00 Wagers		\$2.00 Wagers	
		Number	Amount	Number	Amount	Number	Amount	Number	Amount	Number	Amount
Daily Double	\$ 751,604.00									375,802	\$ 751,604.00
Straight	6,320,090.00	3,365	\$ 336,500.00	14,928	\$ 746,400.00	185,449	\$1,854,490.00	233,618	\$1,168,090.00	1,107,305	2,214,610.00
Place	2,765,907.00	1,163	116,300.00	4,483	224,150.00	58,280	582,800.00	86,939	434,695.00	703,981	1,407,962.00
Show	3,146,838.00	2,044	204,400.00	5,448	272,400.00	67,967	679,670.00	82,538	412,690.00	788,839	1,577,678.00
<b>Totals</b>	<b>\$12,984,439.00</b>	<b>6,572</b>	<b>\$ 657,200.00</b>	<b>24,859</b>	<b>\$1,242,950.00</b>	<b>311,696</b>	<b>\$3,116,960.00</b>	<b>403,095</b>	<b>\$2,015,475.00</b>	<b>2,975,927</b>	<b>\$5,951,854.00</b>

**Pari-Mutuel Handle**

**\$12,984,439.00**

**STATE'S REVENUE**

3% on P-M Handle .....\$389,533.17  
 Tax on Admissions ..... 42,546.92

**Totals.....\$432,080.09**

Total Attendance ..... 265,792  
 Average Daily Attendance ..... 7,817  
 Average Daily P-M Handle .....\$381,895.00  
 Average Wager Per Capita .....\$ 48.85  
 Percentage Daily Double to Total Pool ..... .0579  
 Percentage of \$100.00 Wagers to Total Pool..... .0506  
 Percentage of \$ 50.00 Wagers to Total Pool..... .0957  
 Percentage of \$ 10.00 Wagers to Total Pool..... .2401  
 Percentage of \$ 5.00 Wagers to Total Pool..... .1552  
 Percentage of \$ 2.00 Wagers to Total Pool..... .4584

Total Commission @ 10% .....\$1,298,443.90  
 Total Breaks ..... 75,099.70

**\$1,373,543.60**

State's Commission @ 3% .....\$ 389,533.17  
 Association's Com. @ 7% ..... 908,910.73  
 Association's Break ..... 75,099.70

**\$1,373,543.60**

MIAMI JOCKEY CLUB, Inc.

46 Racing Days—January 8, 1941 to March 1, 1941, Inclusive

Pool Classification	Amount Wagered	\$100.00 Wagers		\$50.00 Wagers		\$10.00 Wagers		\$5.00 Wagers		\$2.00 Wagers	
		Number	Amount	Number	Amount	Number	Amount	Number	Amount	Number	Amount
Daily Double	\$1,208,516.00									604,258	\$1,208,516.00
Straight	12,717,641.00	10,660	\$1,066,000.00	35,994	\$1,799,700.00	353,198	\$3,531,980.00	489,783	\$2,448,915.00	1,935,523	3,871,046.00
Place	5,485,620.00	3,154	345,400.00	11,720	586,000.00	106,695	1,066,950.00	198,016	990,080.00	1,248,595	2,497,190.00
Show	6,045,482.00	4,850	485,000.00	13,619	680,950.00	115,931	1,159,310.00	192,494	962,470.00	1,378,876	2,757,752.00
<b>Totals</b>	<b>\$25,457,259.00</b>	<b>18,964</b>	<b>\$1,896,400.00</b>	<b>61,333</b>	<b>\$3,066,650.00</b>	<b>575,824</b>	<b>\$5,758,240.00</b>	<b>880,293</b>	<b>\$4,401,465.00</b>	<b>5,167,252</b>	<b>\$10,334,504.00</b>

Pari-Mutuel  
Handle

\$25,457,259.00

STATE'S REVENUE

3% on P-M Handle .....\$763,717.77

Tax on Admissions ..... 112,627.82

**Totals.....\$876,345.59**

Total Commission @ 10% .....\$2,545,725.90

Total Breaks ..... 180,166.45

**\$2,725,892.35**

Total Attendance ..... 530,585

Average Daily Attendance ..... 11,534

Average Daily P-M Handle .....\$553,412.00

Average Play Per Capita .....\$ 47.97

Percentage Daily Double to Total Pool..... .0474

Percentage of \$100.00 Wagers to Total Pool..... .0744

Percentage of \$ 50.00 Wagers to Total Pool..... .1204

Percentage of \$ 10.00 Wagers to Total Pool..... .2261

Percentage of \$ 5.00 Wagers to Total Pool..... .1728

Percentage of \$ 2.00 Wagers to Total Pool..... .4059

State's Commission @ 3% .....\$ 763,717.77

Association's Com. @ 7% ..... 1,782,008.13

Association's Breaks ..... 180,166.45

**\$2,725,892.35**

## POLICY OF THE PRESENT COMMISSION

In keeping with the policy of previous Commissions the present Commission followed the established precedent of rigid enforcement of the Racing Laws so as to produce the maximum amount of revenue to the State of Florida. The general program followed by the previous Commission was discussed, and the present Commission, after much deliberation, adopted the following definite program to be its policy, to-wit:

1. Complete and rigid enforcement of Racing Laws in order to insure the maximum revenue to the State and to the State Old Age Pension Fund.

2. Economy in supervision and management, having in view at all times that proper regulation and supervision must be had even though it entails additional expense.

3. A vigorous campaign in cooperation with the National Association of Racing to investigate and prosecute all violations of the laws prohibiting the use of stimulants on horses and dogs.

4. A complete revision of the Rules and Regulations governing Horse Racing, Dog Racing and Jai-Alai. The Commission decided to make the foregoing revision after an unprecedented and highly successful open forum and discussion with owners and trainers of dogs, operators of Dog Tracks, Track and State officials; all of whom submitted their recommendations and were advised of the proposed changes. These met with the general approval of all parties interested. The Commission, however, plans to reconcile such recommendations to its primary duty of protecting first the interest of the public and thereafter that of the persons directly connected with Racing.

5. A continuous campaign for the improvement of the racing premises, grandstand and track facilities, sanitary conditions for jockeys as well as improvement in the handling and care of animals, both horses and dogs, participating in Racing.

6. Co-operation with law enforcement authorities in an active campaign to minimize and, if possible, to completely eliminate all forms of illegal wagering both off and at the Tracks which directly

or indirectly curtail or reduce the revenue to the State of Florida from Horse Racing, Dog Racing and Jai-Alai.

The foregoing Report is made in compliance with Sub-Section 2, of Section 2, of Chapter 14832, Laws of Florida, Acts of 1931, as amended.

Respectfully submitted,

FLORIDA STATE RACING COMMISSION

---

ALEX M. BALFE, Chairman

---

WILLIAM PAUL SHELLEY, JR., Secretary

---

LOUIS J. DAY

---

SAMUEL J. HILBURN

---

C. C. "MILO" VEGA, JR.



