

25th
Annual Report
of the
FLORIDA STATE RACING
COMMISSION

to the
HONORABLE LEROY COLLINS
Governor of Florida

FOR THE FISCAL YEAR ENDING
June 30, 1956

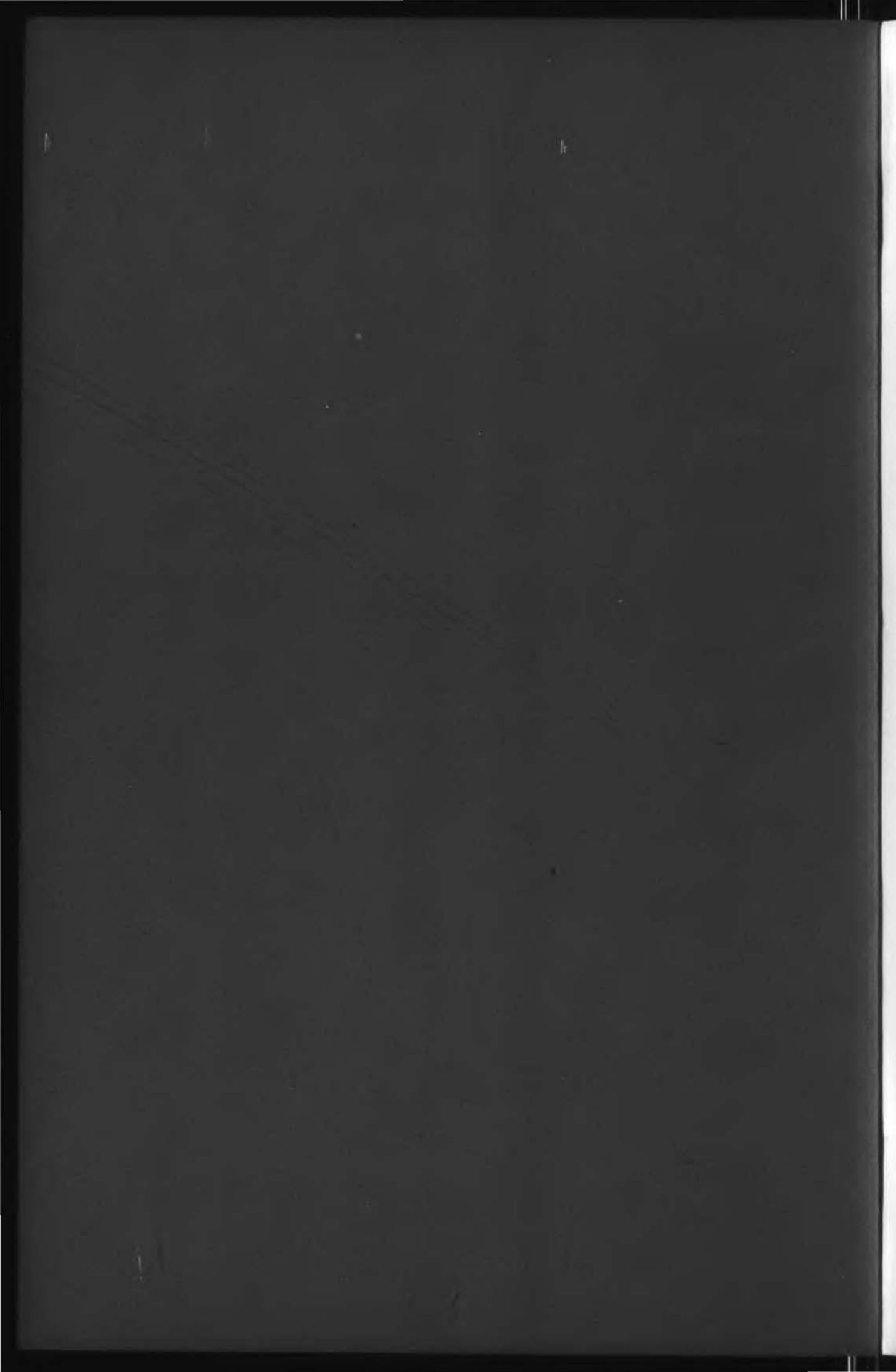


CLARENCE H. RATLIFF, *Chairman*
JOHN R. RING, *Secretary*
J. D. JOHNSON, *Member*
C. SWEET SMITH, JR., *Member*
WARREN H. TOOLE, JR., *Member*

F351.76s
W131

25th

FLORIDA STATE LIBRARY





GOVERNOR LEROY COLLINS

Members of the
FLORIDA STATE RACING COMMISSION



CLARENCE H. RATLIFF, *Chairman*



JOHN R. RING, *Secretary*



J. D. JOHNSON



C. SWEET SMITH, JR.



WARREN H. TOOLE, JR.



25th
Annual Report

of the

**FLORIDA STATE RACING
COMMISSION**

to the

HONORABLE LEROY COLLINS
Governor of Florida

FOR THE FISCAL YEAR ENDING
June 30, 1956



CLARENCE H. RATLIFF, *Chairman*

JOHN R. RING, *Secretary*

J. D. JOHNSON, *Member*

C. SWEET SMITH, JR., *Member*

WARREN H. TOOLE, JR., *Member*

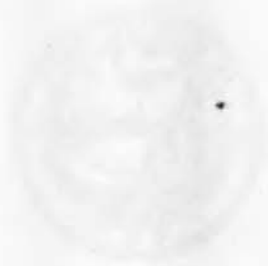
970
29

Annual Report

FLORIDA STATE BOARD
COMMISSION

REPORT OF THE BOARD
FOR THE YEAR

1917



REPORT OF THE BOARD
FOR THE YEAR
1917

Twenty-Fifth Annual Report

to the

GOVERNOR OF FLORIDA

from

THE FLORIDA STATE RACING COMMISSION

JULY 1, 1955 THROUGH JUNE 30, 1956

July 1, 1956

His Excellency LeRoy Collins
Governor of Florida
Tallahassee, Florida

Sir:

In compliance with the requirement contained in Section 550.02, subsection 2, Florida Statutes, 1955, the Florida State Racing Commission submits this, its Twenty-Fifth Annual Report for the period commencing July 1, 1955 to and including June 30, 1956.

Membership of the Commission from July 1, 1955 consisted of the following named persons and the Congressional Districts from which they served:

Warren H. Toole, Jr., Tampa.....	First District
Clarence H. Ratliff, Live Oak.....	Second District
J. D. Johnson, Pensacola.....	Third District
John R. Ring, Miami.....	Fourth District
C. Sweet Smith, Jr., Cocoa.....	Fifth District

During the period in review Clarence H. Ratliff served as Chairman and John R. Ring served as Secretary. Stephen C. O'Connell acted as Commission Attorney from July 1, 1955 until September 6, 1955, when George F. Gilleland was appointed his successor for the remaining portion of the period.

Formal meetings of the Commission were held on the following dates and at the indicated locations during this period:

July 5, 1955.....	Tallahassee, Florida
July 11 and 12, 1955.....	Miami, Florida
August 11, 1955.....	Jacksonville, Florida
October 6 and 7, 1955.....	Miami, Florida
November 28, 1955.....	Miami, Florida
January 3, 1956.....	Miami, Florida
February 24, 1956.....	Miami, Florida
March 26, 1956.....	Miami, Florida
May 14, 1956.....	Miami, Florida

RACING DATES

The Commission assigned racing dates for the 1955-56 season to the various permit holders as follows:

(Listed in order of opening and including scholarship and charity days.)

WINTER RACING

HORSE TRACKS:

- Tropical Park, Inc., Coral Gables
November 28, 1955 through January 16, 1956 (43 days)
- Sunshine Park Racing Association, Inc., Oldsmar
January 13, 1956 through March 13, 1956 (52 days)
- Hialeah Race Course, Inc., Hialeah
January 17, 1956 through March 2, 1956 (40 days)
- Gulfstream Park Racing Association, Inc., Hallandale
March 3, 1956 through April 21, 1956 (43 days)

GREYHOUND TRACKS:

- Orange Park Kennel Club, Inc., Orange Park
October 8, 1955 through November 30, 1955
Re-open April 12, 1956 through June 4, 1956 (91 nights)
- Associated Outdoor Clubs, Inc., Tampa
November 12, 1955 through February 28, 1956
Closed: December 24, 1955 (92 nights)
- Biscayne Kennel Club, Inc., Miami
November 15, 1955 through January 5, 1956
Re-open April 10, 1956 through June 1, 1956 (91 nights)
- Jacksonville Kennel Club, Inc., Jacksonville
December 26, 1955 through April 10, 1956
Closed: March 30, 1956 (91 nights)

Palm Beach Kennel Club, Inc., West Palm Beach
December 26, 1955 through April 10, 1956
Closed: March 30, 1956 (91 nights)

Sanford-Orlando Kennel Club, Inc., Longwood
December 26, 1955 through April 11, 1956
Closed: January 2, 1956 (92 nights)

Broward County Kennel Club, Inc., Hollywood
December 30, 1955 through April 14, 1956
Closed: March 30, 1956 (91 nights)

Miami Beach Kennel Club, Inc., Miami Beach
January 2, 1956 through April 16, 1956 (91 nights)

St. Petersburg Kennel Club, Inc., St. Petersburg
January 2, 1956 through April 17, 1956
Closed: March 30, 1956 (91 nights)

Key West Kennel Club, Inc., Key West
January 6, 1956 through April 19, 1956 (90 nights)

West Flagler Kennel Club, Inc., Miami
January 6, 1956 through April 20, 1956 (91 nights)

Sarasota Kennel Club, Inc., Sarasota
February 29, 1956 through June 2, 1956 (82 nights)

JAI-ALAI FRONTONS:

Gandy Operating Company, Tampa
December 13, 1955 through April 10, 1956 (102 nights)

Monro Operating Company, Inc., Dania
December 13, 1955 through April 10, 1956
Closed: December 24, 1955 (102 nights)

Fronton Exhibition Company, Inc., Miami
December 14, 1955 through April 10, 1956 (102 nights)

The Fronton, Inc., West Palm Beach
December 28, 1955 through April 10, 1956 (90 nights)

SUMMER RACING

GREYHOUND TRACKS:

Pensacola Kennel Club, Inc., Pensacola
June 1, 1956 through September 17, 1956
Closed: September 4, 1956 (92 nights)

Volusia County Kennel Club, Inc., Daytona Beach
June 4, 1956 through September 17, 1956 (91 nights)

Washington County Kennel Club, Inc., Ebro
June 15, 1956 through September 29, 1956 (92 nights)

PERMIT APPLICATIONS

Applications for permits to operate greyhound tracks, jai-alai frontons and harness horse tracks were filed with the Commission during the year in review as follows:

GREYHOUND TRACKS:

Bonita-Ft. Myers Corporation, Lee County
Brevard County Kennel Club, Inc., Brevard County
Indian River Kennel Club, Inc., Martin County
Martin County Kennel Club, Inc., Martin County

JAI-ALAI FRONTONS:

Caron, Inc., Duval County
Peter F. Heller, Dade County
Peter F. Heller, Broward County

HARNESS TRACKS:

Seminole Raceway, Inc., Seminole County

None of the aforementioned applications for permits were approved during the year in review.

ADMINISTRATION

The administration of the affairs of the Racing Commission is directed by Robert Kelly, Supervisor of Racing, and Louis Derteen, Jr., the Assistant Supervisor. The auditing department is headed by Irving Harrington. Tom C. Parker is in charge of the investigating division; and the Commission laboratory is under the direction of Dr. Elsie S. Bellows.

The Racing Commission maintains an office at 911 Security Building, Miami, Florida. In this office the complete records and statistics of all racing activities are kept. A small portion of these records is contained in this report and any other data, too voluminous in scope to be included in its entirety, will be furnished on request.

INVESTIGATIVE DIVISION

In the interest of the safety of the public the Racing Commission maintains an investigative division whose duty is to enforce the Laws of Florida and the Rules and Regulations of Racing as promulgated by the Commission.

Through the cooperation of the local and state law enforcement agencies, the track safety departments and the association managements this division was able to effectively promote and correlate the investigation of all illegal activities on the race tracks of Florida. During the period covered by this report 368 undesirable persons were ejected from the grounds of the various racing associations.

The investigative department especially concerns itself with the enforcement of the commonly called "85% law" which requires at least 85% of the employees at each track be bona-fide Florida residents and that 85% of the weekly payrolls be paid to them. This law assures local residents a fair proportion of the positions at each track. This division is responsible for obtaining the fingerprints and photographs of all officers, directors and employees of each association and maintaining files of same.

With the able assistance of Mr. Wilkins Linhart, telephone engineer for the Florida Railroad and Public Utilities Commission who produced diagrams of the telephone installations at the various racing establishments and periodic checks by the Investigators, the Racing Commission was assured that illegal information was not transmitted from the race tracks.

The Commission wishes also to express its appreciation to the Federal Bureau of Investigation, the Thoroughbred Racing Protective Association and the Safety Departments of the various racing associations for their splendid cooperation during the past year.

LABORATORY

The Commission, in order to keep racing in Florida on the highest possible plane, maintains a complete racing laboratory. At this laboratory, the oldest in the country, the urine and saliva samples taken from winning thoroughbreds and greyhounds are microchemically analyzed in order that any doping drugs might be detected and identified. As a result, fraudulent doping practices have effectively been kept at a minimum. Without this laboratory control, unscrupulous individuals would attempt to administer various drugs which would affect the racing qualities of their animals. The effectiveness of this program is best illustrated by the fact that of the 8,701 samples taken from animals on Florida tracks only 5, after laboratory analyses, were found to contain illegal drugs or medicines. In contrast, 369 samples (at a charge of \$10.00 each) from various Caribbean Racing Boards were analyzed and of them 8 were positive for forbidden drugs.

Dr. Bellows and the laboratory staff are constantly searching for new procedures to identify stimulants and learning the qualities of each newly marketed drug. Through their devoted efforts the Florida State Racing Commission enjoys the reputation of having one of the finest racing laboratories in the world.

SCOPE OF RACING

During the 1955-56 racing season the pari-mutuel handle was the largest in the history of racing in Florida. The total play at the twenty-three associations was \$310,681,432.00 which represents an increase of 9.37 per cent over the preceding year. The accumulated attendance during the period was 1.83 per cent more than 1954-55 as 5,915,941 persons attended the four horse tracks, fifteen greyhound tracks and four frontons.

The revenue derived from racing by the State is also the largest ever. During the past fiscal year, Florida realized a total of \$24,180,833.82 or 17.8 per cent more than during the previous fiscal year.

The individual mutuel play and percentage of increase or decrease is as follows:

HORSE TRACKS

	PARI-MUTUEL PLAY	PERCENTAGE	
		INCREASE	DECREASE
Gulfstream Park	\$ 53,825,682.00	17.5 %	
Hialeah Park	71,743,684.00	4.87	
Sunshine Park	9,043,665.00	3.19	
Tropical Park	35,977,034.00	13.2	
	<u>\$170,590,065.00</u>	<u>10.2 %</u>	

GREYHOUND TRACKS

Associated Outdoor Clubs, Inc.....	\$ 7,549,315.00	1.78%	
Biscayne Kennel Club, Inc.....	17,734,118.00	6.04	
Broward County Kennel Club, Inc.....	15,114,099.00	7.10	
Jacksonville Kennel Club, Inc.....	4,225,682.00		0.48%
Key West Kennel Club, Inc.....	1,630,570.00	11.0	
Miami Beach Kennel Club, Inc.....	12,080,631.00		3.33
Orange Park Kennel Club, Inc.....	3,938,929.00	9.94	
Palm Beach Kennel Club, Inc.....	6,935,273.00		7.29
Pensacola Kennel Club, Inc.....	3,405,877.00	12.3	
St. Petersburg Kennel Club, Inc.....	12,446,662.00		3.42
Sanford-Orlando Kennel Club, Inc.....	5,175,391.00	56.7	
Sarasota Kennel Club, Inc.....	5,645,643.00	16.4	
Volusia County Kennel Club, Inc.....	10,279,969.00	8.23	
Washington County Kennel Club, Inc.....	1,677,281.00	(First Full Season)	
West Flagler Kennel Club, Inc.....	14,248,539.00		1.11
	<u>\$122,087,979.00</u>	<u>5.44%</u>	

JAI-ALAI FRONTONS

Fronton Exhibition Company.....	\$ 6,805,812.00	23.5 %
Fronton, Inc.	1,771,082.00	(First Season)
Gandy Operating Company.....	3,442,620.00	17.1
Monro Operating Co.....	5,983,874.00	19.1
	<u>\$ 18,003,388.00</u>	<u>33.6 %</u>
TOTAL.....	<u>\$310,681,432.00*</u>	<u>9.37%</u>

*—Does not include Scholarship or Charity Days.

The 67 counties of the state each received as their proportionate share the sum of \$165,000.00 of which \$135,250.00 was apportioned under the old racing laws and \$29,750.00 from the additional tax on greyhound tracks enacted by the 1955 session of the legislature. This sum is \$37,800.00 more than each county received during the 1954-55 fiscal year and represents an increase of 29.7 per cent.

The Old Age Assistance Fund also experienced an increase. The \$12,336,317.84 received was \$1,065,499.31 or 9.45 per cent more than during 1954-55.

Although the sum of \$24,180,833.82 was collected by the Commission during the season in review only 1.79 per cent was expended in controlling, directing and supervising the operations and activities of the various licensees. The expenditures for the year represent a saving of \$42,679.68 from the budget appropriations.

SCHOLARSHIP FUND

Pursuant to Chapter 25258, Acts of 1949, the Legislature authorized the various tracks and frontons to operate a total of twenty additional days of racing during the past year for the purpose of creating and providing State Scholarships from the profits derived therefrom. A total of \$299,070.54 was remitted to the State Board of Control for Institutions of Higher Learning.

In addition, the Commission in compliance with Chapter 28499, Acts of 1953, authorized the applicable tracks and frontons in Hillsborough County to operate a total of three additional days for the benefit of the University of Tampa, from which that institution realized the sum of \$13,269.98 to be used for scholarships for worthy students.

CHARITY DAYS

In conformance with Chapter 20843, Acts of 1941, whereby the operators of the various tracks and frontons are permitted to apply for an additional day wherein the net proceeds are to be contributed to charities of their choice, subject to provision designating the University of Miami as a charitable institution entitled to a minimum of 25 per cent of the day's profits. Permission was granted by the Commission for the operation of seven such days during the year as a result of which \$270,724.62 was realized by the University of Miami for scholarships for worthy students.

RULES AND REGULATIONS

Because of changes in the Racing Laws enacted by the 1955 session of the Legislature and the antiquity of existing rules, the Racing Commission revised and rewrote the Rules and Regulations of Horse Racing, Greyhound Racing and Jai-Alai. These rules, written with the co-operation of the Racing Associations, the Florida Breeders' Association, the Horsemen's Benevolent and Protective Association, the Jockeys' Guild and the Jockey Club of New York, give Florida a modern set of regulations with which to govern racing. In addition, the Jai-Alai rules were, for the first time, printed in Spanish.

LEGISLATION

There were no new or amended laws affecting racing approved by the legislature during the year in review. However, the Commission during this period has reviewed the existing statutes and will make recommendations for revision at the appropriate time.

LITIGATION

During the period covered by this report, the Racing Commission was not a party to any litigation instigated in the courts.

NATIONAL CO-ORDINATION

The members of the Commission are members of the National Association of State Racing Commissioners and participate in its programs and committee activities. Under a policy of reciprocity, a State Racing Commission authority's

denial of privileges to a person in its state operates to deny such privileges to such person in any other state until the denial has been removed by the original authority.

Florida was represented at the National meeting of the Association in Chicago by Chairman C. H. Ratliff, Secretary John R. Ring, and Chief Chemist Elsie S. Bellows.

It is felt that the contacts made and the information exchanged there will prove to be of inestimable value in the work of this Commission.

At this convention, Secretary John R. Ring, who had been appointed to fill a vacancy as Treasurer for 1955, was elected Third Vice-President for the coming year.

FLORIDA BREEDERS

During the year in review Florida received national recognition as a breeding place for thoroughbreds. A three-year-old colt, foaled and raised in Ocala, "Needles", won the Flamingo Stakes, the Florida Derby, the Kentucky Derby and the Belmont Stakes and "Florida-Bred" appeared in every major newspaper in the country.

The rise to prominence in thoroughbred breeding has been exceedingly fast. The temperate year-round climate and the elements in the soil of Florida have made this state an ideal place to raise racing animals. Many breeding farms are located in Dade, Broward and Marion Counties and the raising of race horses is becoming a major industry. Horses, bred in Florida, by the end of this year will have earned almost \$4,000,000.00 in purses with half of this amount won during the last two years.

Florida-bred horses received a five-pound weight allowance at all Florida tracks during this period. An amendment to the Rules and Regulations made by the Commission will exclude, in the future, stake races and races having purses of \$20,000.00 or more from this allowance. In addition a Breeder's award was paid by Florida Racing Associations to the breeders of all Florida-bred winners.

The Florida Breeders with the continued support and cooperation of the Racing Associations, the Turf Writers and the Racing Commission, will continue to grow and Florida will send more and more horses to the outstanding races.

CONCLUSION

We, the present members of the Florida State Racing Commission wish to express to you our deep appreciation for the trust and confidence you have placed in us, in appointing us to administer the racing laws of our state.

By accepting this responsibility, we have pledged ourselves to protect the public and the State's interests at all times.

Respectfully submitted,

C. H. RATLIFF, *Chairman*
JOHN R. RING, *Secretary*
J. D. JOHNSON, *Member*
C. SWEET SMITH, JR., *Member*
WARREN H. TOOLE, JR., *Member*

EXHIBIT "A"

FLORIDA STATE RACING COMMISSION
PAID ATTENDANCE, PARI-MUTUEL HANDLE,
STATE REVENUE

SEASON 1931-1932 THRU SEASON 1955-1956

<i>Seasons</i>	<i>Number of Racing Days</i>	<i>Total Attendance</i>	<i>Total Pari-Mutuel Handle</i>	<i>Total State Revenue</i>
1931-1932	462	1,157,161	\$ 17,365,424.00	\$ 737,300.70
1932-1933	550	1,281,017	19,146,938.00	763,877.09
1933-1934	609	1,591,024	27,549,567.00	1,072,364.22
1934-1935	775	2,024,636	36,577,493.00	1,401,176.87
1935-1936	906	1,854,292	38,826,132.00	1,436,957.07
1936-1937	1,029	2,330,964	50,121,647.00	1,838,338.53
1937-1938	1,053	2,401,367	54,047,114.00	1,969,740.68
1938-1939	1,025	2,373,271	55,272,416.00	2,000,758.63
1939-1940	1,057	2,517,436	64,388,377.00	2,302,834.13
1940-1941	902	2,695,464	68,280,202.00	2,436,374.09
1941-1942	972	2,195,080	63,601,585.00	4,392,861.86
1942-1943	734	854,256	26,658,646.00	1,066,087.70
1943-1944	982	2,458,933	109,561,969.00	6,824,272.72
1944-1945	333	945,341	35,171,557.00	2,007,853.08
1945-1946	1,442	4,448,084	211,571,289.00	15,554,033.94
1946-1947	1,298	4,444,543	194,710,333.00	14,680,730.51
1947-1948	1,318	4,344,479	180,647,561.00	13,542,407.27
1948-1949	1,404	4,641,038	178,171,736.00	13,222,461.84
1949-1950	1,377	4,539,742	178,842,858.00	13,101,521.89
1950-1951	1,378	4,643,293	204,385,597.00	14,997,486.10
1951-1952	1,432	5,279,674	248,728,380.00	18,090,497.77
1952-1953	1,549	5,732,369	272,696,059.00	19,734,513.61
1953-1954	1,722	5,812,577	276,681,999.00	20,026,021.78
1954-1955	1,731	5,809,467	284,044,131.00	20,521,462.81
1955-1956	1,879	5,915,941	310,681,432.00	24,180,833.82
TOTALS	27,919	82,291,449	\$3,207,730,442.00	\$217,902,768.71

DISTRIBUTION OF STATE REVENUE:

To Counties	\$101,407,635.31
To Old Age Assistance	106,753,732.61
To State General Fund	3,546,044.35
Operating Expenses	5,982,341.63
Cash on Hand and in Transit as of June 30, 1956	213,014.81
TOTAL	\$217,902,768.71

EXHIBIT "B"
 FLORIDA STATE RACING COMMISSION
 STATEMENT OF RECEIPTS AND DISBURSEMENTS
 JULY 1, 1955 TO JUNE 30, 1956, INCLUSIVE

STATE RACING COMMISSION FUND

Admission Tax:

Dog Tracks	\$ 353,405.98
Jai-Alai Frontons	97,972.18
Horse Tracks	401,201.15

TOTAL \$ 852,579.31

Commission on Pari-Mutuel Handle:

Dog Tracks 3/17 of Net Commission.....	\$3,248,297.94
Dog Tracks Flat Rate Instead of 3/17.....	15,660.00
Jai-Alai Frontons 3%	540,101.64
Horse Tracks 3%	4,846,392.00
Horse Tracks Flat Rate Instead of 3%.....	187,500.00

TOTAL \$ 8,837,951.58

Licenses, Registrations and Miscellaneous:

Occupational Licenses	\$ 65,275.00
Greyhound Registrations	6,116.00
Assumed Name Registrations	3,020.00
Color Registrations	1,431.00
Miscellaneous Receipts	4,212.79

TOTAL \$ 80,054.79

State Racing Commission New Dog Tax Fund

Commission on Pari-Mutuel Handle:

Dog Tracks 2/17 of Net Commission.....	\$1,907,076.82
Dog Tracks 25% Breakage.....	165,011.96

TOTAL \$ 2,072,088.78

TOTAL State Racing Commission Receipts..... \$11,842,674.46

OLD AGE ASSISTANCE FUND *

Commission on Pari-Mutuel Handle:

Dog Tracks 2/17 of Net Commission.....	\$2,165,531.96
Dog Tracks Flat Rate Instead of 2/17.....	10,440.00
Dog Tracks 75% Breakage.....	538,236.38
Jai-Alai Frontons 2%	360,067.76
Jai-Alai Frontons 50% of Breakage.....	45,380.10
Horse Tracks 5%	8,077,320.00
Horse Tracks Flat Rate Instead of 5%.....	62,500.00
Horse Tracks 100% of Breakage.....	1,078,683.16

TOTAL OLD AGE ASSISTANCE RECEIPTS..... \$12,338,159.36

TOTAL Receipts for Current Season..... \$24,180,833.82

Balance on Hand July 1, 1955 as follows:

State Racing Commission Account.....	114,447.39
Remittance in Transit as of 6-30-55.....	76,079.80

TOTAL Available and to be Accounted for..... \$24,371,361.01

FLORIDA STATE RACING COMMISSION
DISBURSEMENTS
JULY 1, 1955 TO JUNE 30, 1956, INCLUSIVE

Salaries:

Commissioners	\$ 13,780.65	
Commission Attorney	3,000.00	
	<u> </u>	\$ 16,780.65
General Office	\$ 53,218.09	
Laboratory	23,811.00	
	<u> </u>	\$ 77,029.09

Track Supervision:

Dog Racing Associations.....	\$178,995.00	
Jai-Alai Frontons	39,825.00	
Horse Racing Associations.....	69,921.50	
	<u> </u>	\$ 288,741.50
TOTAL SALARIES		<u>\$ 382,551.24</u>

Traveling Expenses:

Commissioners	\$ 4,709.47	
Commission Attorney	206.90	
Employees	4,031.56	
	<u> </u>	\$ 8,947.93

Miscellaneous Expenses:

Association Dues	\$ 400.00
Bond Premiums	432.04
Fingerprinting and Photographing.....	850.25
Freight, Express and Drayage.....	957.67
Incidental Expenses	244.65
Insurance	2,336.06
Judges Fees, Occupational Licenses.....	3,048.00
Laboratory Supplies	4,753.24
Laboratory Equipment	205.75
Legal Hearings, Court Reporting, Etc.....	706.94
Photostatic and Blue Printing.....	14.35
Office Furniture and Equipment.....	3,418.69
Postage	1,559.40

Rental—Miami Office	6,708.00	
Rental—Laboratory	2,100.00	
Rental of Equipment.....	365.50	
Repairs to Furniture and Equipment.....	223.97	
Repairs to Laboratory Equipment.....	117.75	
Repairs to Office and Painting.....	778.56	
Printing and Binding.....	6,734.63	
Stationery and Office Supplies.....	2,326.09	
Telephone	3,588.37	
Telegraph	<u>73.24</u>	
TOTAL Miscellaneous Disbursements.....		\$ 41,943.15
TOTAL Disbursed by Commission.....		\$ 433,442.32
Regular Distribution to Counties.....		9,061,750.00
Additional Distribution to Counties.....		1,993,250.00
Regular 3% Distribution to General Revenue		290,352.52
Additional 3% Distribution to General Revenue		43,233.52
To General Revenue for Old Age Fund.....		<u>12,336,317.84</u>
GRAND TOTAL DISBURSEMENTS.....		\$24,158,346.20
Balance on Hand State Racing Commission Account (June 30, 1956).....		111,382.68
Remittance in Transit from Dog Tracks (June 30, 1956).....		<u>101,632.13</u>
TOTAL ACCOUNTED FOR.....		\$24,371,361.01

STATE OF TEXAS

COMMISSIONERS OF THE GENERAL LAND OFFICE

Section	Original	Acquired	Total
1. 10000	10000	10000	20000
2. 10000	10000	10000	20000
3. 10000	10000	10000	20000
4. 10000	10000	10000	20000
5. 10000	10000	10000	20000
6. 10000	10000	10000	20000
7. 10000	10000	10000	20000
8. 10000	10000	10000	20000
9. 10000	10000	10000	20000
10. 10000	10000	10000	20000
11. 10000	10000	10000	20000
12. 10000	10000	10000	20000
13. 10000	10000	10000	20000
14. 10000	10000	10000	20000
15. 10000	10000	10000	20000
16. 10000	10000	10000	20000
17. 10000	10000	10000	20000
18. 10000	10000	10000	20000
19. 10000	10000	10000	20000
20. 10000	10000	10000	20000
21. 10000	10000	10000	20000
22. 10000	10000	10000	20000
23. 10000	10000	10000	20000
24. 10000	10000	10000	20000
25. 10000	10000	10000	20000
26. 10000	10000	10000	20000
27. 10000	10000	10000	20000

EXHIBIT "C"
FLORIDA STATE RACING COMMISSION
COMPARATIVE DATA

1954-1955 SEASON

1955-1956 SEASON

Attendance	Pari-Mutual Handle	Tax on Attendance	5% Comm. on Pari-Mutual Handle	2% Comm. on Pari-Mutual Handle	State Revenue From Breaks	Total State Revenue	Track Comm. on Pari-Mutual Handle	Track Revenue From Breaks	Distributed to Public	Increased Tax Refunded	No. Racing Days	SOURCES OF RACING REVENUE	No. Racing Days	Attendance	Pari-Mutual Handle	Tax on Attendance	3%—3/17 Net Comm. and Sliding Scale on Pari-Mutual Handle		2%—2/17 Net Comm. and Sliding Scale on Pari-Mutual Handle		3/17 of Net Comm. on Pari-Mutual Handle	25% Total Breaks	50% and 75% Total Breaks	TOTAL State Revenue	Track Allowance \$170.00 Per Race	Total Track Breaks	Track 10/17 Net Comm. & 12% Sliding Scale	Total Track Revenue	Distributed to Public			
																	3%	17%	2%	17%												
GREYHOUND RACING ASSOCIATIONS SUMMER SEASON																																
86,260	\$ 3,033,754.00	\$ 8,626.00	\$ 91,012.62	\$ 60,675.08	\$ 10,691.58	\$ 171,005.28	\$ 363,169.89	\$ 10,691.14	\$ 2,496,633.10	\$ 880.59	85	—Pensacola Kennel Club, Inc.—	86	96,575	\$ 3,405,877.00	\$ 10,240.40	89,597.79	\$ 59,731.86	\$ 13,172.42	\$ 1,954.53	\$ 13,936.59	\$ 188,633.59	\$ 45,900.00	\$ 8,072.60	\$ 370,597.02	\$ 424,569.62	\$ 2,802,914.19					
282,852	\$ 9,498,582.00	\$ 28,285.20	\$ 284,957.46	\$ 189,971.64	\$ 30,222.19	\$ 533,436.49	\$ 1,027,419.38	\$ 30,221.57	\$ 7,823,379.30	\$ 112,410.46	90	—Volusia County Kennel Club, Inc.—	91	302,924	\$ 10,279,969.00	\$ 33,194.43	298,859.07	\$ 199,239.38	\$ 38,948.48	\$ 3,775.82	\$ 55,478.24	\$ 609,495.42	\$ 54,060.00	\$ 24,149.97	\$ 1,156,487.80	\$ 1,234,697.77	\$ 8,468,970.24					
17,105	\$ 275,211.00	\$ 1,710.50	\$ 8,256.33	\$ 5,504.22	\$ 1,388.82	\$ 16,859.87	\$ 33,025.32	\$ 1,388.71	\$ 225,647.60	\$ —	18	—Washington County Kennel Club, Inc.—	86	64,068	\$ 1,677,281.00	\$ 6,550.20	30,101.43	\$ 20,067.62	\$ 1,927.52	\$ 751.49	\$ 7,914.16	\$ 67,312.42	\$ 9,350.00	\$ 5,659.09	\$ 223,691.20	\$ 238,700.29	\$ 1,377,818.49					
386,217	\$ 12,807,547.00	\$ 38,621.70	\$ 384,226.41	\$ 256,150.94	\$ 42,302.59	\$ 721,301.64	\$ 1,423,614.59	\$ 42,301.42	\$ 10,545,660.00	\$ 113,291.05	193	—TOTAL SUMMER SEASON—	263	463,567	\$ 15,363,127.00	\$ 49,985.03	\$ 418,558.29	\$ 279,038.86	\$ 54,048.42	\$ 6,481.84	\$ 57,328.99	\$ 865,441.43	\$ 109,310.00	\$ 57,881.66	\$ 1,750,776.02	\$ 1,897,967.68	\$ 12,649,702.92					
WINTER SEASON																																
201,450	\$ 7,417,128.00	\$ 20,145.00	\$ 222,513.84	\$ 148,342.56	\$ 22,491.24	\$ 413,492.64	\$ 890,055.36	\$ 22,490.70	\$ 6,111,234.30	\$ —	90	—Associated Outdoor Clubs, Inc.—	90	192,748	\$ 7,549,315.00	\$ 19,274.80	\$ 196,809.45	\$ 131,206.30	\$ 125,026.16	\$ 10,129.76	\$ 31,248.11	\$ 513,694.58	\$ 168,130.00	\$ 857.15	\$ 662,211.64	\$ 831,198.79	\$ 6,223,696.43					
512,475	\$ 16,724,317.00	\$ 51,247.50	\$ 501,729.51	\$ 334,486.34	\$ 54,639.81	\$ 942,103.16	\$ 2,006,918.04	\$ 54,639.30	\$ 13,771,904.00	\$ —	90	—Biscayne Kennel Club, Inc.—	90	494,532	\$ 17,734,118.00	\$ 50,149.70	\$ 505,023.54	\$ 336,682.36	\$ 336,682.36	\$ 27,280.48	\$ 81,842.56	\$ 1,357,661.00	\$ 153,000.00	\$ —	\$ 1,683,411.80	\$ 1,836,411.80	\$ 14,610,194.90					
454,072	\$ 14,112,125.00	\$ 45,407.20	\$ 423,363.75	\$ 282,242.50	\$ 45,263.05	\$ 796,276.50	\$ 1,693,455.00	\$ 45,262.60	\$ 11,622,538.10	\$ —	90	—Broward County Kennel Club, Inc.—	90	429,894	\$ 15,114,099.00	\$ 47,176.48	\$ 426,422.97	\$ 284,281.98	\$ 284,281.98	\$ 23,601.27	\$ 70,805.11	\$ 1,136,569.79	\$ 153,000.00	\$ —	\$ 1,421,409.90	\$ 1,574,409.90	\$ 12,450,295.79					
110,862	\$ 4,246,037.00	\$ 11,086.20	\$ 127,381.11	\$ 84,920.74	\$ 11,758.47	\$ 235,146.52	\$ 509,524.44	\$ 11,758.04	\$ 3,300,694.20	\$ —	89	—Jacksonville Kennel Club, Inc.—	90	109,214	\$ 4,225,682.00	\$ 10,921.40	\$ 98,810.46	\$ 65,873.64	\$ 65,873.64	\$ 5,689.94	\$ 17,071.26	\$ 264,240.34	\$ 158,440.00	\$ —	\$ 329,368.20	\$ 487,808.20	\$ 3,484,554.86					
46,806	\$ 1,469,052.00	\$ 4,680.60	\$ 27,000.00	\$ 18,000.00	\$ 4,634.92	\$ 54,315.52	\$ 204,738.84	\$ 4,634.44	\$ 1,210,043.80	\$ —	90	—Key West Kennel Club, Inc.—	90	55,029	\$ 1,630,570.00	\$ 5,502.90	\$ 11,617.35	\$ 7,744.90	\$ 2,024.90	\$ 2,668.18	\$ 8,005.56	\$ 37,563.79	\$ 10,710.00	\$ —	\$ 245,099.75	\$ 255,809.75	\$ 1,342,699.36					
384,076	\$ 12,496,913.00	\$ 38,407.60	\$ 374,907.39	\$ 249,938.26	\$ 35,796.06	\$ 699,049.31	\$ 1,499,629.56	\$ 35,795.63	\$ 10,300,846.10	\$ —	90	—Miami Beach Kennel Club, Inc.—	90	334,606	\$ 12,080,631.00	\$ 36,281.12	\$ 355,388.93	\$ 223,592.62	\$ 223,592.62	\$ 16,627.03	\$ 49,882.48	\$ 885,364.80	\$ 153,170.00	\$ —	\$ 1,117,963.10	\$ 1,271,133.10	\$ 9,960,414.22					
86,402	\$ 3,582,757.00	\$ 8,640.20	\$ 107,482.71	\$ 71,655.14	\$ 10,162.82	\$ 197,940.87	\$ 429,394.62	\$ 10,162.39	\$ 2,953,363.10	\$ 536.22	89	—Orange Park Kennel Club, Inc.—	91	92,190	\$ 3,938,929.00	\$ 9,219.00	\$ 101,673.21	\$ 67,782.14	\$ 36,217.58	\$ 2,896.48	\$ 13,141.52	\$ 230,929.93	\$ 90,610.00	\$ 4,451.11	\$ 373,335.00	\$ 468,396.11	\$ 3,248,821.96					
246,189	\$ 7,480,674.00	\$ 25,995.03	\$ 224,420.22	\$ 149,613.48	\$ 23,373.58	\$ 423,402.31	\$ 897,680.88	\$ 23,373.14	\$ 6,162,212.70	\$ —	90	—Palm Beach Kennel Club, Inc.—	90	191,550	\$ 6,935,273.00	\$ 19,479.48	\$ 180,098.19	\$ 120,065.46	\$ 120,065.46	\$ 10,919.20	\$ 32,756.80	\$ 483,384.59	\$ 158,440.00	\$ —	\$ 600,327.30	\$ 758,767.30	\$ 5,712,600.59					
91,951	\$ 3,303,111.00	\$ 9,195.10	\$ 99,093.33	\$ 66,062.22	\$ 10,952.18	\$ 185,302.83	\$ 396,373.32	\$ 10,951.75	\$ 2,719,678.20	\$ —	90	—Sanford-Orlando Kennel Club, Inc.—	90	120,312	\$ 5,175,391.00	\$ 12,151.21	\$ 117,100.23	\$ 78,066.82	\$ 77,626.82	\$ 7,817.15	\$ 23,450.72	\$ 316,212.95	\$ 207,910.00	\$ —	\$ 399,112.60	\$ 607,022.60	\$ 4,264,306.66					
97,455	\$ 4,849,402.00	\$ 9,745.50	\$ 145,482.06	\$ 96,988.04	\$ 14,703.04	\$ 266,918.64	\$ 581,928.24	\$ 14,702.52	\$ 3,995,598.10	\$ —	80	—Sarasota Kennel Club, Inc.—	80	107,447	\$ 5,645,643.00	\$ 11,116.35	\$ 136,129.29	\$ 90,752.86	\$ 90,752.86	\$ 7,848.89	\$ 23,547.14	\$ 360,147.59	\$ 188,360.00	\$ —	\$ 453,764.30	\$ 642,124.30	\$ 4,654,487.66					
422,345	\$ 12,887,493.00	\$ 42,234.50	\$ 386,624.79	\$ 257,749.86	\$ 42,639.64	\$ 729,248.79	\$ 1,546,499.16	\$ 42,639.05	\$ 10,611,340.50	\$ —	90	—St. Petersburg Kennel Club, Inc.—	90	388,688	\$ 12,446,662.00	\$ 40,016.21	\$ 356,799.86	\$ 224,533.24	\$ 224,533.24	\$ 21,441.44	\$ 64,324.60	\$ 911,648.59	\$ 207,400.00	\$ —	\$ 1,122,666.20	\$ 1,330,066.20	\$ 10,244,963.42					
485,370	\$ 14,407,778.00	\$ 48,537.00	\$ 452,233.34	\$ 288,155.56	\$ 47,186.43	\$ 816,112.33	\$ 1,728,933.36	\$ 47,185.91	\$ 11,864,083.40	\$ —	90	—West Flagler Kennel Club, Inc.—	90	417,935	\$ 14,248,539.00	\$ 42,132.30	\$ 399,526.17	\$ 266,350.78	\$ 266,350.78	\$ 21,610.30	\$ 64,831.53	\$ 1,060,801.86	\$ 158,270.00	\$ —	\$ 1,331,753.90	\$ 1,490,023.90	\$ 11,739,845.54					
3,139,453	\$ 102,976,787.00	\$ 313,321.43	\$ 3,072,232.05	\$ 2,048,154.70	\$ 323,601.24	\$ 5,759,309.42	\$ 12,385,130.82	\$ 323,595.47	\$ 84,823,536.50	\$ 536.22	1,068	—TOTAL WINTER SEASON—	1,071	2,934,145	\$ 106,724,852.00	\$ 303,420.95	\$ 2,845,399.65	\$ 1,896,933.10	\$ 1,853,028.40	\$ 158,530.12	\$ 480,907.39	\$ 7,538,219.61	\$ 1,807,440.00	\$ 5,308.26	\$ 9,740,423.69	\$ 11,553,171.95	\$ 87,936,881.39					
TOTAL GREYHOUND TRACKS Summer and Winter Seasons																																
3,525,670	\$ 115,784,334.00	\$ 353,943.13	\$ 3,456,458.46	\$ 2,304,305.64	\$ 365,903.83	\$ 6,480,611.06	\$ 13,808,745.41	\$ 365,896.89	\$ 93,369,196.50	\$ 113,827.27	1,261	—TOTAL GREYHOUND TRACKS Summer and Winter Seasons—	1,334	3,397,712	\$ 122,087,979.00	\$ 353,405.98	\$ 3,263,957.94	\$ 2,175,971.96	\$ 1,907,076.82	\$ 165,011.96	\$ 538,236.38	\$ 8,403,661.04	\$ 1,916,750.00	\$ 43,189.92	\$ 11,491,199.71	\$ 13,451,139.63	\$ 100,586,584.31					
JAI-ALAI FRONTONS																																
292,326	\$ 5,510,816.00	\$ 29,232.60	\$ 165,324.48	\$ 110,216.32	\$ 14,071.49	\$ 318,844.89	\$ 661,297.92	\$ 14,070.99	\$ 4,545,834.80	\$ —	100	—Fronton Exhibition Co., Inc. (Miami)—	100	308,118	\$ 6,805,812.00	\$ 32,028.01	\$ 204,174.36	\$ 136,116.24	\$ 15,879.48	\$ 388,198.09	\$ 15,878.98	\$ 816,697.44	\$ 832,576.42	\$ 5,617,065.50								
169,279	\$ 2,939,078.00	\$ 17,042.49	\$ 88,172.34	\$ 58,781.56	\$ 7,128.64	\$ 171,125.03	\$ 352,689.36	\$ 7,128.10	\$ 2,425,178.00	\$ —	—	—Fronton, Inc. (West Palm Beach)—	77	118,299	\$ 1,771,082.00	\$ 13,239.08	\$ 53,132.46	\$ 35,421.64	\$ 5,091.82	\$ 106,885.00	\$ 5,091.40	\$ 212,529.84	\$ 217,621.24	\$ 1,459,814.84								
278,784	\$ 5,022,989.00	\$ 36,791.18	\$ 150,689.67	\$ 100,459.78	\$ 14,852.57	\$ 302,793.20	\$ 602,758.68	\$ 14,852.00	\$ 4,139,376.30	\$ —	100	—Gandy Operating Co., Inc. (Tampa)—	100	171,805	\$ 3,442,620.00	\$ 18,232.60	\$ 105,278.60	\$ 68,852.40	\$ 8,545.80	\$ 198,909.40	\$ 8,545.20	\$ 413,114.40	\$ 421,659.60	\$ 2,840,283.60								
740,389	\$ 13,472,883.00	\$ 83,066.27	\$ 404,186.49	\$ 269,457.66	\$ 36,052.70	\$ 792,763.12	\$ 1,616,745.96	\$ 36,051.09	\$ 11,110,389.10	\$ —	300	—Monro Operating Co., Inc. (Dania)—	98	295,264	\$ 5,983,874.00	\$ 34,472.49	\$ 179,516.22	\$ 119,677.48	\$ 15,863.00	\$ 349,529.19	\$ 15,862.45	\$ 718,064.88	\$ 733,927.33	\$ 4,934,889.97								
TOTAL JAI-ALAI FRONTONS																																
4,266,059	\$ 129,257,217.00	\$ 437,009.40	\$ 3,860,644.95	\$ 2,573,763.30	\$ 401,956.53	\$ 7,273,374.18	\$ 15,425,491.37	\$ 401,947.98	\$ 106,479,585.60	\$ 113,827.27	1,561	—TOTAL GREYHOUND TRACKS AND FRONTONS—	1,709	4,291,198	\$ 140,091,367.00	\$ 451,378.16	\$ 3,804,059.58	\$ 2,536,039.72	\$ 1,907,076.82	\$ 165,011.96	\$ 583,616.48	\$ 9,447,182.72	\$ 1,916,750.00	\$ 88,567.95	\$ 13,651,606.27	\$ 15,656,924.22	\$ 111,438,638.22					
HORSE RACING ASSOCIATIONS																																
451,286	\$ 45,822,089.00	\$ 112,647.36	\$ 1,374,662.67	\$ 2,291,104.45	\$ 273,611.45	\$ 4,052,025.93	\$ 3,207,546.23	\$ 38,675,164.20	\$ —	40	—Gulfstream Park Racing Ass'n., Inc.—	40	489,522	\$ 53,825,682.00	\$ 140,622.94	\$ 1,614,770.46	\$ 2,691,284.10	\$ 320,735.45	\$ 4,767,412.95	\$ 3,767,797.74	\$ 3,767,797.74	\$ 45,431,094.25										
693,571	\$ 68,413,252.00	\$ 152,958.64	\$ 2,052,397.56	\$ 3,420,662.60	\$ 412,722.80	\$ 6,038,741.60	\$ 4,788,927.64	\$ 57,738,541.40	\$ —	40	—Hialeah Race Course, Inc.—	40	692,680	\$ 71,743,684.00	\$ 171,737.97	\$ 2,152,310.52	\$ 3,587,184.20	\$ 466,670.20	\$ 6,377,902.89	\$ 5,022,057.88	\$ 5,022,057.88	\$ 60,515,461.20										
105,917	\$ 8,764,025.00	\$ 15,012.71	\$ 150,000.00	\$ 50,000.00	\$ 58,506.30	\$ 273,519.01	\$ 1,114,603.75	\$ 7,390,914.95	\$ —	50	—Sunshine Park Racing Ass'n., Inc.—	50	129,750	\$ 9,043,665.00	\$ 17,688.62	\$ 187,500.00	\$ 62,500.00	\$ 64,766.60	\$ 332,455.22	\$ 1,106,549.75	\$ 1,106,549.75	\$ 7,622,348.65										
292,634	\$ 31,787,548.00	\$ 65,439.25	\$ 953,626.44	\$ 1,589,377.40	\$ 199,113.70	\$ 2,807,556.79	\$ 2,225,128.36	\$ 26,820,302.10	\$ —	40	—Tropical Park, Inc.—	40	312,791	\$ 35,977,034.00	\$ 71,151.62	\$ 1,079,311.02	\$ 1,798,851.70	\$ 226,510.91	\$ 3,175,825.25	\$ 2,518,392.38	\$ 2,518,392.38	\$ 30,353,967.99										
TOTAL HORSE TRACKS																																
1,543,408	\$ 154,786,914.00	\$ 346,057.96	\$ 4,530,686.67	\$ 7,351,144.45	\$ 943,954.25	\$ 13,171,843.33	\$ 11,336,205.98	\$ —	\$ 130,624,922.65	\$ —	170	—TOTAL HORSE TRACKS—	170	1,624,743	\$ 170,590,065.00	\$ 401,201.15	\$ 5,033,892.00	\$ 8,139,820.00	\$ —	\$ —	\$ 1,078,683.16	\$ 14,653,596.31	\$ —	\$ —	\$ 12,414,797.75	\$ 12,414,797.75	\$ 143,922,872.09					
3,809,467	\$ 284,044,131.00	\$ 783,067.36	\$ 8,391,331.62	\$ 9,924,907.75	\$ 1,345,910.78	\$ 20,445,217.51	\$ 26,761,697.35	\$ 401,947.98	\$ 237,104,508.25	\$ 113,827.27	1,731	—TOTAL ALL TRACKS—	1,8																			

EXHIBIT "C"

FLORIDA STATE RACING COMMISSION
COMPARATIVE DATA

1954-1955 SEASON

Attendance	Pari-Mutuel Handle	Tax on Attendance	3% Comm. on Pari-Mutuel Handle	2% Comm. on Pari-Mutuel Handle	State Revenue From Breaks	Total State Revenue	Track Comm. on Pari-Mutuel Handle	Track Revenue From Breaks	Distributed to Public	Increased Tax Refunded	No. Racing Days	SOURCES OF RACING REVENUE	No. Racing Days	Attendance	Pari-Mutuel Handle	Tax on Attendance	3%—3/17 Net Comm. and Sliding Scale on Pari-Mutuel Handle	2%—2/17 Net Comm. and Sliding Scale on Pari-Mutuel Handle
GREYHOUND RACING ASSOCIATIONS																		
SUMMER SEASON																		
86,260	\$ 3,033,754.00	\$ 8,626.00	\$ 91,012.62	\$ 60,675.08	\$ 10,691.58	\$ 171,005.28	\$ 363,169.89	\$ 10,691.14	\$ 2,496,633.10	\$ 880.59	85	—Pensacola Kennel Club, Inc.—	86	96,575	\$ 3,405,877.00	\$ 10,240.40	\$ 89,597.79	\$ 59,731.84
282,852	9,498,582.00	28,285.20	284,957.46	189,971.64	30,222.19	533,436.49	1,027,419.38	30,221.57	7,823,379.30	112,410.46	90	—Volusia County Kennel Club, Inc.—	91	302,924	10,279,969.00	33,194.43	298,859.07	199,239.34
17,105	275,211.00	1,710.50	8,256.33	5,504.22	1,388.82	16,859.87	33,025.32	1,388.71	225,647.60		18	—Washington County Kennel Club, Inc.—	86	64,068	1,677,281.00	6,550.20	30,101.43	20,067.62
386,217	\$ 12,807,547.00	\$ 38,621.70	\$ 384,226.41	\$ 256,150.94	\$ 42,302.59	\$ 721,301.64	\$ 1,423,614.59	\$ 42,301.42	\$ 10,545,660.00	\$ 113,291.05	193	—TOTAL SUMMER SEASON—	263	463,567	\$ 15,363,127.00	\$ 49,985.03	\$ 418,558.29	\$ 279,038.80
WINTER SEASON																		
201,450	\$ 7,417,128.00	\$ 20,145.00	\$ 222,513.84	\$ 148,342.56	\$ 22,491.24	\$ 413,492.64	\$ 890,055.36	\$ 22,490.70	\$ 6,111,234.30		90	—Associated Outdoor Clubs, Inc.—	90	192,748	\$ 7,549,315.00	\$ 19,274.80	\$ 196,809.45	\$ 131,206.30
512,475	16,724,317.00	51,247.50	501,729.51	334,486.34	54,639.81	942,103.16	2,006,918.04	54,639.30	13,771,904.00		90	—Biscayne Kennel Club, Inc.—	90	494,532	17,734,118.00	50,149.70	505,023.54	336,682.30
454,072	14,112,125.00	45,407.20	423,363.75	282,242.50	45,263.05	796,276.50	1,693,455.00	45,262.60	11,622,538.10		90	—Broward County Kennel Club, Inc.—	90	429,894	15,114,099.00	47,176.48	426,422.97	284,281.90
110,862	4,246,037.00	11,086.20	127,381.11	84,920.74	11,758.47	235,146.52	509,524.44	11,758.04	3,500,694.20		89	—Jacksonville Kennel Club, Inc.—	90	109,214	4,225,682.00	10,921.40	98,810.46	65,873.60
46,806	1,469,052.00	4,680.60	* 27,000.00	* 18,000.00	4,634.92	54,315.52	204,738.84	4,634.44	1,210,043.80		90	—Key West Kennel Club, Inc.—	90	55,029	1,630,570.00	5,502.90	11,617.35	7,744.90
384,076	12,496,913.00	38,407.60	374,907.39	249,938.26	35,796.06	699,049.31	1,499,629.56	35,795.63	10,300,846.10		90	—Miami Beach Kennel Club, Inc.—	90	334,606	12,080,631.00	36,281.12	335,388.93	223,592.60
86,402	3,582,757.00	8,640.20	107,482.71	71,655.14	10,162.82	197,940.87	429,394.62	10,162.39	2,953,363.10	536.22	89	—Orange Park Kennel Club, Inc.—	91	92,190	3,938,929.00	9,219.00	101,673.21	67,782.10
246,189	7,480,674.00	25,995.03	224,420.22	149,613.48	23,373.58	423,402.31	897,680.88	23,373.14	6,162,212.70		90	—Palm Beach Kennel Club, Inc.—	90	191,550	6,935,273.00	19,479.48	180,098.19	120,065.40
91,951	3,303,111.00	9,195.10	99,093.33	66,062.22	10,952.18	185,302.83	396,373.32	10,951.75	2,719,678.20		90	—Sanford-Orlando Kennel Club, Inc.—	90	120,312	5,175,391.00	12,151.21	117,100.23	78,066.80
97,455	4,849,402.00	9,745.50	145,482.06	96,988.04	14,703.04	266,918.64	581,928.24	14,702.52	3,995,598.10		80	—Sarasota Kennel Club, Inc.—	80	107,447	5,645,643.00	11,116.35	136,129.29	90,752.80
422,345	12,887,493.00	42,234.50	386,624.79	257,749.86	42,639.64	729,248.79	1,546,499.16	42,639.05	10,611,340.50		90	—St. Petersburg Kennel Club, Inc.—	90	388,688	12,446,662.00	40,016.21	336,799.86	224,533.20
485,370	14,407,778.00	48,537.00	432,233.34	288,155.56	47,186.43	816,112.33	1,728,933.36	47,185.91	11,864,083.40		90	—West Flagler Kennel Club, Inc.—	90	417,935	14,248,539.00	42,132.30	399,526.17	266,350.70
3,139,453	\$ 102,976,787.00	\$ 315,321.43	\$ 3,072,232.05	\$ 2,048,154.70	\$ 323,601.24	\$ 5,759,309.42	\$ 12,385,130.82	\$ 323,595.47	\$ 84,823,536.50	\$ 536.22	1,068	—TOTAL WINTER SEASON—	1,071	2,934,145	\$ 106,724,852.00	\$ 303,420.95	\$ 2,845,399.65	\$ 1,896,933.10
TOTAL GREYHOUND TRACKS																		
3,525,670	\$ 115,784,334.00	\$ 353,943.13	\$ 3,456,458.46	\$ 2,304,305.64	\$ 365,903.83	\$ 6,480,611.06	\$ 13,808,745.41	\$ 365,896.89	\$ 95,369,196.50	\$ 113,827.27	1,261	—Summer and Winter Seasons—	1,334	3,397,712	\$ 122,087,979.00	\$ 353,405.98	\$ 3,263,957.94	\$ 2,175,971.90
JAI-ALAI FRONTONS																		
292,326	\$ 5,510,816.00	\$ 29,232.60	\$ 165,324.48	\$ 110,216.32	\$ 14,071.49	\$ 318,844.89	\$ 661,297.92	\$ 14,070.99	\$ 4,545,834.80		100	—Fronton Exhibition Co., Inc. (Miami)—	100	308,118	\$ 6,805,812.00	\$ 32,028.01	\$ 204,174.36	\$ 136,116.20
												—Fronton, Inc. (West Palm Beach)—	77	118,299	1,771,082.00	13,239.08	53,132.46	35,421.60
169,279	2,939,078.00	17,042.49	88,172.34	58,781.56	7,128.64	171,125.03	352,689.36	7,128.10	2,425,178.00		100	—Gandy Operating Co., Inc. (Tampa)—	100	171,805	3,442,620.00	18,232.60	103,278.60	68,852.40
278,784	5,022,989.00	36,791.18	150,689.67	100,459.78	14,852.57	302,793.20	602,758.68	14,852.00	4,139,376.30		100	—Monro Operating Co., Inc. (Dania)—	98	295,264	5,983,874.00	34,472.49	179,516.22	119,677.40
740,389	\$ 13,472,883.00	\$ 83,066.27	\$ 404,186.49	\$ 269,457.66	\$ 36,052.70	\$ 792,763.12	\$ 1,616,745.96	\$ 36,051.09	\$ 11,110,389.10	\$ —0—	300	—TOTAL JAI-ALAI FRONTONS—	375	893,486	\$ 18,003,388.00	\$ 97,972.18	\$ 540,101.64	\$ 360,067.70
TOTAL GREYHOUND TRACKS AND FRONTONS																		
4,266,059	\$ 129,257,217.00	\$ 437,009.40	\$ 3,860,644.95	\$ 2,573,763.30	\$ 401,956.53	\$ 7,273,374.18	\$ 15,425,491.37	\$ 401,947.98	\$ 106,479,585.60	\$ 113,827.27	1,561	—TOTAL GREYHOUND TRACKS AND FRONTONS—	1,709	4,291,198	\$ 140,091,367.00	\$ 451,378.16	\$ 3,804,059.58	\$ 2,536,039.70
HORSE RACING ASSOCIATIONS																		
451,286	\$ 45,822,089.00	\$ 112,647.36	\$ 1,374,662.67	\$ 2,291,104.45	\$ 273,611.45	\$ 4,052,025.93	\$ 3,207,546.23	\$ 38,675,164.20			40	—Gulfstream Park Racing Ass'n., Inc.—	40	489,522	\$ 53,825,682.00	\$ 140,622.94	\$ 1,614,770.46	\$ 2,691,284.10
693,571	68,413,252.00	152,958.64	2,052,397.56	3,420,662.60	412,722.80	6,038,741.60	4,788,927.64	57,738,541.40			40	—Hialeah Race Course, Inc.—	40	692,680	71,743,684.00	171,737.97	2,152,310.52	3,587,184.20
105,917	8,764,025.00	15,012.71	* 150,000.00	* 50,000.00	58,506.30	273,519.01	1,114,603.75	7,390,914.95			50	—Sunshine Park Racing Ass'n., Inc.—	50	129,750	9,043,665.00	17,688.62	187,500.00	62,500.00
292,634	31,787,548.00	65,439.25	953,626.44	1,589,377.40	199,113.70	2,807,556.79	2,225,128.36	26,820,302.10			40	—Tropical Park, Inc.—	40	312,791	35,977,034.00	71,151.62	1,079,311.02	1,798,851.70
1,543,408	\$ 154,786,914.00	\$ 346,057.96	\$ 4,530,686.67	\$ 7,351,144.45	\$ 943,954.25	\$ 13,171,843.33	\$ 11,336,205.98	\$ —0—	\$ 130,624,922.65	\$ —0—	170	—TOTAL HORSE TRACKS—	170	1,624,743	\$ 170,590,065.00	\$ 401,201.15	\$ 5,033,892.00	\$ 8,139,820.00
5,809,467	\$ 284,044,131.00	\$ 783,067.36	\$ 8,391,331.62	\$ 9,924,907.75	\$ 1,345,910.78	\$ 20,445,217.51	\$ 26,761,697.35	\$ 401,947.98	\$ 237,104,508.25	\$ 113,827.27	1,731	—TOTAL ALL TRACKS—	1,879	5,915,941	\$ 310,681,432.00	\$ 852,579.31	\$ 8,837,951.58	\$ 10,675,859.70

OTHER INCOME:

Occupational Licenses	\$ 62,004.00
Greyhound Registrations	5,733.00
Assumed Name Registrations	2,820.00
Color Registrations	1,439.00
Miscellaneous Income	4,249.30
TOTAL OTHER INCOME	\$ 76,245.30
GRAND TOTAL RECEIPTS	\$ 20,521,462.81

* Instead of a 3% and 2% Comm. at Key West Kennel Club, Inc., and a 3% and 5% Comm. at Sunshine Park Racing Ass'n., Inc., a Flat Rate was deducted.

EXHIBIT "C"
FLORIDA STATE RACING COMMISSION
COMPARATIVE DATA

1955-1956 SEASON

Distributed to Public	Increased Tax Refunded	No. Racing Days	SOURCES OF RACING REVENUE	No. Racing Days	Attendance	Pari-Mutuel Handle	Tax on Attendance	3%—3/17 Net Comm. and Sliding Scale on Pari-Mutuel Handle	2%—2/17 Net Comm. and Sliding Scale on Pari-Mutuel Handle	2/17 of Net Comm. on Pari-Mutuel Handle	25% Total Breaks	50% and 75% Total Breaks	TOTAL State Revenue	Track Allowance \$170.00 Per Race	Total Track Breaks	Track 10/17 Net Comm. & 12% & Sliding Scale	Total Track Revenue	Distributed to Public	
GREYHOUND RACING ASSOCIATIONS																			
SUMMER SEASON																			
2,496,633.10	\$ 880.59	85	Pensacola Kennel Club, Inc.	86	96,575	\$ 3,405,877.00	\$ 10,240.40	\$ 89,597.79	\$ 59,731.86	\$ 13,172.42	\$ 1,954.53	\$ 13,936.59	\$ 188,633.59	\$ 45,900.00	\$ 8,072.60	\$ 370,597.02	\$ 424,569.62	\$ 2,802,914.19	
7,823,379.30	112,410.46	90	Volusia County Kennel Club, Inc.	91	302,924	10,279,969.00	33,194.43	298,859.07	199,239.38	38,948.48	3,775.82	35,478.24	609,495.42	54,060.00	24,149.97	1,156,487.80	1,234,697.77	8,468,970.24	
225,647.60		18	Washington County Kennel Club, Inc.	86	64,068	1,677,281.00	6,550.20	30,101.43	20,067.62	1,927.52	751.49	7,914.16	67,312.42	9,350.00	5,659.09	223,691.20	238,700.29	1,377,818.49	
10,545,660.00	\$113,291.05	193	TOTAL SUMMER SEASON	263	463,567	\$ 15,363,127.00	\$ 49,985.03	\$ 418,558.29	\$ 279,038.86	\$ 54,048.42	\$ 6,481.84	\$ 57,328.99	\$ 865,441.43	\$ 109,310.00	\$37,881.66	\$ 1,750,776.02	\$ 1,897,967.68	\$ 12,649,702.92	
WINTER SEASON																			
6,111,234.30		90	Associated Outdoor Clubs, Inc.	90	192,748	\$ 7,549,315.00	\$ 19,274.80	\$ 196,809.45	\$ 131,206.30	\$ 125,026.16	\$ 10,129.76	\$ 31,248.11	\$ 513,694.58	\$ 168,130.00	\$ 857.15	\$ 662,211.64	\$ 831,198.79	\$ 6,223,696.43	
13,771,904.00		90	Biscayne Kennel Club, Inc.	90	494,532	17,734,118.00	50,149.70	505,023.54	336,682.36	336,682.36	27,280.48	81,842.56	1,337,661.00	153,000.00		1,683,411.80	1,836,411.80	14,610,194.90	
11,622,538.10		90	Broward County Kennel Club, Inc.	90	429,894	15,114,099.00	47,176.48	426,422.97	284,281.98	284,281.98	23,601.27	70,805.11	1,136,569.79	153,000.00		1,421,409.90	1,574,409.90	12,450,295.79	
3,500,694.20		89	Jacksonville Kennel Club, Inc.	90	109,214	4,225,682.00	10,921.40	98,810.46	65,873.64	65,873.64	5,689.94	17,071.26	264,240.34	158,440.00		329,368.20	487,808.20	3,484,554.86	
1,210,043.80		90	Key West Kennel Club, Inc.	90	55,029	1,630,570.00	5,502.90	11,617.35	7,744.90	2,024.90	2,668.18	8,005.56	37,563.79	10,710.00		245,099.75	255,809.75	1,342,699.36	
10,300,846.10		90	Miami Beach Kennel Club, Inc.	90	334,606	12,080,631.00	36,281.12	335,388.93	223,592.62	223,592.62	16,627.03	49,882.48	885,364.80	153,170.00		1,117,963.10	1,271,133.10	9,960,414.22	
2,953,363.10	536.22	89	Orange Park Kennel Club, Inc.	91	92,190	3,938,929.00	9,219.00	101,673.21	67,782.14	36,217.58	2,896.48	13,141.52	230,929.93	90,610.00	4,451.11	373,335.00	468,396.11	3,248,821.96	
6,162,212.70		90	Palm Beach Kennel Club, Inc.	90	191,550	6,935,273.00	19,479.48	180,098.19	120,065.46	120,065.46	10,919.20	32,756.80	483,384.59	158,440.00		600,327.30	758,767.30	5,712,600.59	
2,719,678.20		90	Sanford-Orlando Kennel Club, Inc.	90	120,312	5,175,391.00	12,151.21	117,100.23	78,066.82	77,626.82	7,817.15	23,450.72	316,212.95	207,910.00		399,112.60	607,022.60	4,264,306.66	
3,995,598.10		80	Sarasota Kennel Club, Inc.	80	107,447	5,645,643.00	11,116.35	136,129.29	90,752.86	90,752.86	7,848.89	23,547.14	360,147.39	188,360.00		453,764.30	642,124.30	4,654,487.66	
10,611,340.50		90	St. Petersburg Kennel Club, Inc.	90	388,688	12,446,662.00	40,016.21	336,799.86	224,533.24	224,533.24	21,441.44	64,324.60	911,648.59	207,400.00		1,122,666.20	1,330,066.20	10,244,963.42	
11,864,083.40		90	West Flagler Kennel Club, Inc.	90	417,935	14,248,539.00	42,132.30	399,526.17	266,350.78	266,350.78	21,610.30	64,831.53	1,060,801.86	158,270.00		1,331,753.90	1,490,023.90	11,739,845.54	
84,823,536.50	\$ 536.22	1,068	TOTAL WINTER SEASON	1,071	2,934,145	\$106,724,852.00	\$303,420.95	\$2,845,399.65	\$ 1,896,933.10	\$1,853,028.40	\$158,530.12	\$ 480,907.39	\$ 7,538,219.61	\$1,807,440.00	\$ 5,308.26	\$ 9,740,423.69	\$11,553,171.95	\$ 87,936,881.39	
TOTAL GREYHOUND TRACKS																			
95,369,196.50	\$113,827.27	1,261	Summer and Winter Seasons	1,334	3,397,712	\$122,087,979.00	\$353,405.98	\$3,263,957.94	\$ 2,175,971.96	\$1,907,076.82	\$165,011.96	\$ 538,236.38	\$ 8,403,661.04	\$1,916,750.00	\$43,189.92	\$11,491,199.71	\$13,451,139.63	\$100,586,584.31	
JAI-ALAI FRONTONS																			
4,545,834.80		100	Fronton Exhibition Co., Inc. (Miami)	100	308,118	\$ 6,805,812.00	\$ 32,028.01	\$ 204,174.36	\$ 136,116.24			\$ 15,879.48	\$ 388,198.09		\$15,878.98	\$ 816,697.44	\$ 832,576.42	\$ 5,617,065.50	
			Fronton, Inc. (West Palm Beach)	77	118,299	1,771,082.00	13,239.08	53,132.46	35,421.64			5,091.82	106,885.00		5,091.40	212,529.84	217,621.24	1,459,814.84	
2,425,178.00		100	Gandy Operating Co., Inc. (Tampa)	100	171,805	3,442,620.00	18,232.60	103,278.60	68,852.40			8,545.80	198,909.40		8,545.20	413,114.40	421,659.60	2,840,283.60	
4,139,376.30		100	Monro Operating Co., Inc. (Dania)	98	295,264	5,983,874.00	34,472.49	179,516.22	119,677.48			15,863.00	349,529.19		15,862.45	718,064.88	733,927.33	4,934,889.97	
11,110,389.10	\$ —0—	300	TOTAL JAI-ALAI FRONTONS	375	893,486	\$ 18,003,388.00	\$ 97,972.18	\$ 540,101.64	\$ 360,067.76	\$ —0—	\$ —0—	\$ 45,380.10	\$ 1,043,521.68	\$ —0—	\$45,378.03	\$ 2,160,406.56	\$ 2,205,784.59	\$ 14,852,053.91	
TOTAL GREYHOUND TRACKS AND FRONTONS																			
106,479,585.60	\$113,827.27	1,561		1,709	4,291,198	\$140,091,367.00	\$451,378.16	\$3,804,059.58	\$ 2,536,039.72	\$1,907,076.82	\$165,011.96	\$ 583,616.48	\$ 9,447,182.72	\$1,916,750.00	\$88,567.95	\$13,651,606.27	\$15,656,924.22	\$115,438,638.22	
HORSE RACING ASSOCIATIONS																			
38,675,164.20		40	Gulfstream Park Racing Ass'n., Inc.	40	489,522	\$ 53,825,682.00	\$140,622.94	\$1,614,770.46	\$ 2,691,284.10			\$ 320,735.45	\$ 4,767,412.95		\$ 3,767,797.74	\$ 3,767,797.74	\$ 45,431,094.25		
57,738,541.40		40	Hialeah Race Course, Inc.	40	692,680	71,743,684.00	171,737.97	2,152,310.52	3,587,184.20			466,670.20	6,377,902.89		5,022,057.88	5,022,057.88	60,515,461.20		
7,390,914.95		50	Sunshine Park Racing Ass'n., Inc.	50	129,750	9,043,665.00	17,688.62	187,500.00	62,500.00			64,766.60	332,455.22		1,106,549.75	1,106,549.75	7,622,348.65		
26,820,302.10		40	Tropical Park, Inc.	40	312,791	35,977,034.00	71,151.62	1,079,311.02	1,798,851.70			226,510.91	3,175,825.25		2,518,392.38	2,518,392.38	30,353,967.99		
130,624,922.65	\$ —0—	170	TOTAL HORSE TRACKS	170	1,624,743	\$170,590,065.00	\$401,201.15	\$5,033,892.00	\$ 8,139,820.00	\$ —0—	\$ —0—	\$1,078,683.16	\$14,653,596.31	\$ —0—	\$ —0—	\$12,414,797.75	\$12,414,797.75	\$143,922,872.09	
237,104,508.25	\$113,827.27	1,731	TOTAL ALL TRACKS	1,879	5,915,941	\$310,681,432.00	\$852,579.31	\$8,837,951.58	\$10,675,859.72	\$1,907,076.82	\$165,011.96	\$1,662,299.64	\$24,100,779.03	\$1,916,750.00	\$88,567.95	\$26,066,404.02	\$28,071,721.97	\$259,361,510.31	

OTHER INCOME:

Occupational Licenses	\$ 65,275.00
Greyhound Registrations	6,116.00
Assumed Name Registrations	3,020.00
Color Registrations	1,431.00
Miscellaneous Income	4,212.79
TOTAL OTHER INCOME	\$ 80,054.79
GRAND TOTAL RECEIPTS	\$24,180,833.82

In addition to total receipts see Exhibit "D" for Racing Fund collected.



EXHIBIT "D"

RECEIPTS

FLORIDA STATE RACING COMMISSION
FROM EXTRA DAYS OF RACING
HELD FOR SCHOLARSHIP FUND

STATE UNIVERSITIES

Associated Outdoor Clubs, Inc.....	\$ 5,618.57	
Biscayne Kennel Club, Inc.....	5,495.22	
Broward County Kennel Club, Inc.....	8,082.64	
Jacksonville Kennel Club, Inc.....	4,074.22	
Key West Kennel Club, Inc.....	—0—	
Miami Beach Kennel Club, Inc.....	9,409.78	
Orange Park Kennel Club, Inc.....	4,391.21	
Palm Beach Kennel Club, Inc.....	7,427.91	
Pensacola Kennel Club, Inc.....	1,671.17	
Sanford-Orlando Kennel Club, Inc.....	2,259.91	
Sarasota Kennel Club, Inc.....	2,811.79	
St. Petersburg Kennel Club, Inc.....	6,971.82	
Volusia County Kennel Club, Inc.....	4,906.50	
West Flagler Kennel Club, Inc.....	9,107.27	
Gandy Operating Co., Inc.....	673.87	
Miami Fronton Exhibition Co., Inc.....	5,260.26	
Monro Operating Co., Inc.....	1,218.79	
Gulfstream Park Racing Association.....	83,376.50	
Gulfstream Park Racing Association (For Hialeah)	82,233.15	
Sunshine Park Racing Association, Inc.....	5,215.98	
Tropical Park, Inc.	48,863.98	\$299,070.54

UNIVERSITY OF MIAMI

Gulfstream Park Racing Association, Inc.....	\$147,335.56	
Tropical Park, Inc. (For Hialeah).....	44,248.43	
Tropical Park, Inc.....	74,902.85	
Miami Fronton Exhibition Co., Inc.....	1,307.97	
Monro Operating Co., Inc.....	1,300.75	
Sanford-Orlando Kennel Club, Inc.....	1,136.46	
Sarasota Kennel Club, Inc.....	492.60	\$270,724.62

UNIVERSITY OF TAMPA

Associated Outdoor Clubs, Inc.....	\$ 7,632.92	
Gandy Operating Co., Inc.....	489.36	
Sunshine Park Racing Association, Inc.....	5,147.70	\$ 13,269.98
TOTAL RECEIPTS HELD FOR SCHOLARSHIP FUND.....		<u>\$583,065.14</u>

ASSOCIATED OUTDOOR CLUBS, INC.

Tampa, Florida

Officers

W. H. JOHNSTON, *President and Managing Director*

6300 San Jose Boulevard
Jacksonville, Florida

E. A. ROULEAU, *Vice-President and General Manager*

3510 San Jose Boulevard
Tampa, Florida

R. J. HART, *Secretary*

617 University Drive
Coral Gables, Florida

HARRY J. HATER, *Treasurer*

2330 Prairie Avenue
Miami Beach, Florida

ROBERT E. HATER, *Assistant Secretary*

5361 Julmar Drive
Cincinnati 38, Ohio

Directors

R. J. HART

ROBERT E. HATER

W. H. JOHNSTON

E. A. ROULEAU

L. D. AULT

HARRY J. HATER

WALTER IBOLD

ASSOCIATED OUTDOOR CLUBS, INC.

90 Racing Days—November 12, 1955 to February 28, 1956, Incl.—101 Performances

Pari-Mutuel Handle	\$7,549,315.00
Average Performance	74,745.69
Average Wager per Capita	39.17

Total Paid Attendance	192,748
Average Paid Performance Attendance	1,908

*Net Commission = 17% of P-M Handle Less \$170.00
Track Allowance per Race*

STATE REVENUE

3% and 3/17 of Net Commission (Counties)	\$ 196,809.45
2% and 2/17 of Net Commission (Old Age Assistance)	131,206.30
2/17 of Net Commission (Counties)	125,026.16
25% of Total Breaks (Counties)	10,129.76
50% and 75% of Total Breaks (Old Age Assistance)	31,248.11
Admission Tax (Counties)	19,274.80
	<u>\$ 513,694.58</u>
Occupational Licenses (Counties)	2,112.00
Assumed Names (Counties)	50.00
Total State Revenue	<u>\$ 515,856.58</u>

TRACK REVENUE

989 Races @ \$170.00 Allowance per Race	\$ 168,130.00
Total Track Breaks	857.15
10/17 of Net Commission	662,211.64
Total Track Revenue (11.01%)	<u>\$ 831,198.79</u>
Distributed to Public (82.44%)	<u>\$6,223,696.43</u>
Distributed to Public by Track for Minus Pool	159.77
Total Distributed to Public	<u>\$6,223,856.20</u>
Percentage of Daily Double to Total Pool	8.95%
Percentage of Quiniela to Total Pool	67.45%
Percentage of Breaks to Total Pool	0.56%

19

Pool Classification	Amount Wagered	\$10.00 Wagers		\$5.00 Wagers		\$2.00 Wagers	
		Number	Amount	Number	Amount	Number	Amount
Daily Double	\$ 675,900.00					337,950	\$ 675,900.00
Quiniela	5,091,934.00	24,840	\$248,400.00			2,421,767	4,843,534.00
Win	809,174.00			60,650	\$303,250.00	252,962	505,924.00
Place	517,553.00			31,321	156,605.00	180,474	360,948.00
Show	454,754.00			17,922	89,610.00	182,572	365,144.00
TOTAL	\$7,549,315.00	24,840	\$248,400.00	109,893	\$549,465.00	3,375,725	\$6,751,450.00

The Attendance of 1,343 and Pari-Mutuel Handle of \$51,729.00 for Scholarship Fund Day, January 3, 1956 not included in above.
The Attendance of 1,515 and Pari-Mutuel Handle of \$61,932.00 for University of Tampa Day, January 24, 1956 not included in above.

BISCAYNE KENNEL CLUB, INC.

Miami, Florida

Officers

T. R. KNIGHT, *President and Treasurer*

El Comodoro Hotel

Miami, Florida

JAMES C. KNIGHT, *Vice-President*

El Comodoro Hotel

Miami, Florida

THURMAN A. WHITESIDE, *Secretary*

4409 Santa Maria Street

Coral Gables, Florida

F. G. BURGHART, *Assistant Secretary*

930 N. E. 86th Street

Miami, Florida

Directors

J. H. ADAMS
JAMES C. KNIGHT

T. R. KNIGHT

ELLEN K. WHITESIDE
THURMAN A. WHITESIDE

BISCAYNE KENNEL CLUB, INC.

45 Racing Days—November 15, 1955 to January 5, 1956, Incl.—45 Performances

Pari-Mutuel Handle	\$9,464,291.00
Average Performance	210,317.58
Average Wager per Capital	35.13

Total Paid Attendance	269,374
Average Paid Performance Attendance	5,986

*Net Commission = 17% of P-M Handle Less \$170.00
Track Allowance per Race*

STATE REVENUE

3/17 of Net Commission (Counties)	\$ 270,428.73
2/17 of Net Commission (Old Age Assistance)	180,285.82
2/17 of Net Commission (Counties)	180,285.82
25% of Total Breaks (Counties)	14,965.01
75% of Total Breaks (Old Age Assistance)	44,895.52
Admission Tax (Counties)	27,294.48
	<u>\$ 718,155.38</u>
Occupational Licenses (Counties)	2,542.00
Assumed Names (Counties)	50.00
Total State Revenue	<u>\$ 720,747.38</u>

TRACK REVENUE

450 Races @ \$170.00 Allowance per Race	\$ 76,500.00
10/17 of Net Commission	901,429.10
Total Track Revenue (10.33%)	<u>\$ 977,929.10</u>
Distributed to Public (82.37%)	\$7,795,501.00
Percentage of Daily Double to Total Pool	5.08%
Percentage of Quiniela to Total Pool	64.35%
Percentage of Breaks to Total Pool	0.63%

21

Pool Classification	Amount Wagered	\$10.00 Wagers		\$5.00 Wagers		\$2.00 Wagers	
		Number	Amount	Number	Amount	Number	Amount
Daily Double	\$ 480,330.00					240,165	\$ 480,330.00
Quiniela	6,090,586.00	91,074	\$910,740.00			2,589,923	5,179,846.00
Win	1,518,711.00			146,677	\$ 733,385.00	392,663	785,326.00
Place	721,779.00			49,539	247,695.00	237,042	474,084.00
Show	652,885.00			37,285	186,425.00	233,230	466,460.00
TOTAL	\$9,464,291.00	91,074	\$910,740.00	233,501	\$1,167,505.00	3,693,023	\$7,386,046.00

BISCAYNE KENNEL CLUB, INC.

45 Racing Days—April 10, 1956 to June 1, 1956, Incl.—45 Performances

Pari-Mutuel Handle	\$8,269,827.00
Average Performance	183,773.93
Average Wager per Capita	36.73

Total Paid Attendance	225,158
Average Paid Performance Attendance	5,004

Net Commission = 17% of P-M Handle Less \$170.00
Track Allowance per Race

STATE REVENUE

3/17 of Net Commission (Counties)	\$ 234,594.81
2/17 of Net Commission (Old Age Assistance)	156,396.54
2/17 of Net Commission (Counties)	156,396.54
25% of Total Breaks (Counties)	12,315.47
75% of Total Breaks (Old Age Assistance)	36,947.04
Admission Tax (Counties)	22,855.22
	<u>\$ 619,505.62</u>
Occupational Licenses (Counties)	118.75
Total State Revenue	<u>\$ 619,624.37</u>

TRACK REVENUE

450 Races @ \$170.00 Allowance per Race	\$ 76,500.00
10/17 of Net Commission	781,982.70
Total Track Revenue (10.40%)	<u>\$ 858,482.70</u>
Distributed to Public (82.40%)	<u>\$6,814,693.90</u>
Percentage of Daily Double to Total Pool	5.68%
Percentage of Quiniela to Total Pool	67.83%
Percentage of Breaks to Total Pool	0.60%

22

Pool Classification	Amount Wagered	\$10.00 Wagers		\$5.00 Wagers		\$2.00 Wagers	
		Number	Amount	Number	Amount	Number	Amount
Daily Double	\$ 469,348.00					234,674	\$ 469,348.00
Quiniela	5,609,636.00	66,417	\$664,170.00			2,472,733	4,945,466.00
Win	1,105,746.00			94,286	\$471,430.00	317,158	634,316.00
Place	571,370.00			33,772	168,860.00	201,255	402,510.00
Show	513,727.00			24,457	122,285.00	195,721	391,442.00
TOTAL	\$8,269,827.00	66,417	\$664,170.00	152,515	\$762,575.00	3,421,541	\$6,843,082.00

The Attendance of 1,786 and Pari-Mutuel Handle of \$55,636.00 for Scholarship Fund Day April 12, 1956 not included in above.

1900

1901

1902

1903

1904

1905

1906

1907

1908

1909

1910

1911

1912

1913

1914

1915

1916

1917

1918

1919

1920

1921

1922

1923

1924

1925

1926

1927

1928

1929

1930

BROWARD COUNTY KENNEL CLUB, INC.
Hollywood, Florida

Officers

WILLIAM J. SYMS, SR., *President*
1358 Polk Street
Hollywood, Florida

WILLIAM J. SYMS, JR., *Vice-President*
1406 Harrison Street
Hollywood, Florida

E. O. McCURRY, *Secretary*
1857 Jefferson Street
Hollywood, Florida

THOMAS LYNCH, *2nd Vice-President*
1215 Van Buren Street
Hollywood, Florida

JAMES J. DICK, JR., *Treasurer*
1819 Buchanan Street
Hollywood, Florida

Directors

WILLIAM J. SYMS, JR.
LEE McRITCHIE

WILLIAM J. SYMS, SR.

E. O. McCURRY
C. H. LANDEFELD, JR.

BROWARD COUNTY KENNEL CLUB, INC.

90 Racing Days—December 30, 1955 to April 14, 1956, Incl.—90 Performances

Pari-Mutuel Handle	\$15,114,099.00
Average Performance	167,934.43
Average Wager Per Capita	35.16

STATE REVENUE

3/17 of Net Commission (Counties)	\$ 426,422.97
2/17 of Net Commission (Old Age Assistance)	284,281.98
2/17 of Net Commission (Counties)	284,281.98
25% of Total Breaks (Counties)	23,601.27
75% of Total Breaks (Old Age Assistance)	70,805.11
Admission Tax (Counties)	47,176.48
	<u>\$ 1,136,569.79</u>
Occupational Licenses (Counties)	2,366.50
Assumed Names (Counties)	30.00
Total State Revenue	<u>\$ 1,138,966.29</u>

Total Paid Attendance	429,894
Average Paid Performance Attendance	4,776

*Net Commission = 17% of P-M Handle Less \$170.00
Track Allowance per Race*

TRACK REVENUE

900 Races @ \$170.00 Allowance per Race	\$ 153,000.00
10/17 of Net Commission	1,421,409.90
Total Track Revenue (10.42%)	<u>\$ 1,574,409.90</u>
Distributed to Public (82.38%)	\$12,450,295.79
Distributed to Public by Track for Minus Pool	1,193.03
Total Distributed to Public	<u>\$12,451,488.82</u>

Percentage of Daily Double to Total Pool	5.55%
Percentage of Quiniela to Total Pool	65.16%
Percentage of Breaks to Total Pool	0.62%

25

Pool Classification	Amount Wagered	\$10.00 Wagers		\$5.00 Wagers		\$2.00 Wagers		\$1.00 Wagers	
		Number	Amount	Number	Amount	Number	Amount	Number	Amount
Daily Double	\$ 839,600.00					419,800	\$ 839,600.00		
Quiniela	9,847,856.00	92,219	\$ 922,190.00			4,462,833	8,925,666.00		
Win	2,267,093.00	39,280	392,800.00	160,477	\$ 802,385.00	381,353	762,706.00	309,202	\$309,202.00
Place	1,128,648.00	15,361	153,610.00	59,492	297,460.00	184,188	368,376.00	309,202	309,202.00
Show	1,030,902.00	10,831	108,310.00	40,162	200,810.00	206,290	412,580.00	309,202	309,202.00
TOTAL	\$15,114,099.00	157,691	\$1,576,910.00	260,131	\$1,300,655.00	5,654,464	\$11,308,928.00	927,606	\$927,606.00

The Attendance of 2,799 and Pari-Mutuel Handle of \$84,083.00 for Scholarship Fund Day, December 31, 1955 not included in above.

JACKSONVILLE KENNEL CLUB, INC.

Jacksonville, Florida

Officers

WM. H. JOHNSTON, SR., *President*
6300 San Jose Boulevard
Jacksonville, Florida

JAMES J. PATTON
814 Granada Boulevard, So.
Jacksonville, Florida

ROBERT J. HART, SR., *Secretary-Treasurer*
617 University Drive
Coral Gables, Florida

Directors

JAMES J. PATTON

WM. H. JOHNSTON, SR.
JOHN A. RUSH

ROBERT J. HART, SR.

JACKSONVILLE KENNEL CLUB, INC.

90 Racing Days—December 26, 1955 to April 10, 1956, Incl.—93 Performances

Pari-Mutuel Handle	\$4,225,682.00
Average Performance	45,437.44
Average Wager per Capita	38.69

Total Paid Attendance.....	109,214
Average Paid Performance Attendance.....	1,174

*Net Commission = 17% of P-M Handle Less \$170.00
Track Allowance per Race*

STATE REVENUE

3/17 of Net Commission (Counties).....	\$ 98,810.46
2/17 of Net Commission (Old Age Assistance).....	65,873.64
2/17 of Net Commission (Counties).....	65,873.64
25% of Total Breaks (Counties).....	5,689.94
75% of Total Breaks (Old Age Assistance).....	17,071.26
Admission Tax (Counties).....	10,921.40
	<u>\$ 264,240.34</u>
Occupational Licenses (Counties).....	177.75
Total State Revenue.....	<u>\$ 264,418.09</u>

TRACK REVENUE

932 Races @ \$170.00 Allowance per Race.....	\$ 158,440.00
10/17 of Net Commission.....	329,368.20
Total Track Revenue (11.54%).....	<u>\$ 487,808.20</u>
Distributed to Public (82.47%).....	\$3,484,554.86
Distributed to Public by Track for Minus Pool.....	7.64
Total Distributed to Public.....	<u>\$3,484,562.50</u>
Percentage of Daily Double to Total Pool.....	9.65%
Percentage of Quiniela to Total Pool.....	68.94%
Percentage of Breaks to Total Pool.....	0.53%

27

Pool Classification	Amount Wagered	\$5.00 Wagers		\$2.00 Wagers	
		Number	Amount	Number	Amount
Daily Double	\$ 407,346.00			203,673	\$ 407,346.00
Quiniela	2,913,448.00			1,456,724	2,913,448.00
Win	439,306.00	31,336	\$156,680.00	141,313	282,626.00
Place	246,817.00	12,489	62,445.00	92,186	184,372.00
Show	218,765.00	6,289	31,445.00	93,660	187,320.00
TOTAL	\$4,225,682.00	50,114	\$250,570.00	1,987,556	\$3,975,112.00

The Attendance of 1,001 and Pari-Mutuel Handle of \$41,812.00 for Scholarship Fund Day November 14, 1955 not included in above.

KEY WEST KENNEL CLUB, INC.
Key West, Florida

Officers

SIDNEY M. ARONOVITZ, *President*
2701 S. W. 4th Avenue
Miami, Florida

BENJAMIN KLINE, *Vice-President and Secretary*
1801 Collins Avenue
Miami Beach, Florida

EDWARD KAPLAN, *Treasurer*
995 W. 48th Street
Miami Beach, Florida

Directors

ABE ARONOVITZ
KURT PEISER

SAM FRIEDLAND
BENJAMIN KLINE
LEONARD WIEN

LEONARD FRIEDLAND
EDWARD KAPLAN

KEY WEST KENNEL CLUB, INC.

90 Racing Days—January 6, 1956 to April 19, 1956, Incl.—90 Performances

Pari-Mutuel Handle	\$1,630,570.00
Average Performance	18,117.44
Average Wager per Capita	29.63

Total Paid Attendance	55,029
Average Paid Performance Attendance	611

*Net Commission = 17% of P-M Handle Less \$170.00
Track Allowance per Race*

STATE REVENUE

3/17 of Net Commission and Sliding Scale Rate (Counties)	\$ 11,617.35
2/17 of Net Commission and Sliding Scale Rate (Old Age Assistance)	7,744.90
2/17 of Net Commission (Counties)	2,024.90
25% of Total Breaks (Counties)	2,668.18
75% of Total Breaks (Old Age Assistance)	8,005.56
Admission Tax (Counties)	5,502.90
	<u>\$ 37,563.79</u>
Occupational Licenses (Counties)	630.75
Assumed Names (Counties)	20.00
Total State Revenue	<u>\$ 38,214.54</u>

TRACK REVENUE

63 Races @ \$170.00 Allowance per Race	\$ 10,710.00
869 Races on Sliding Scale Rate	234,975.25
10/17 of Net Commission	10,124.50
Total Track Revenue (15.67%)	<u>\$ 255,809.75</u>
Distributed to Public (82.35%)	\$1,342,699.36
Distributed to Public by Track for Minus Pool	139.34
Total Distributed to Public	<u>\$1,342,838.70</u>
Percentage of Daily Double to Total Pool	6.12%
Percentage of Quiniela to Total Pool	66.87%
Percentage of Breaks to Total Pool	0.65%

29

Pool Classification	Amount Wagered	\$5.00 Wagers		\$2.00 Wagers	
		Number	Amount	Number	Amount
Daily Double	\$ 99,748.00			49,874	\$ 99,748.00
Quiniela	1,090,416.00			545,208	1,090,416.00
Win	169,942.00	8,732	\$43,660.00	63,141	126,282.00
Place	130,974.00	5,290	26,450.00	52,262	104,524.00
Show	139,490.00	4,308	21,540.00	58,975	117,950.00
TOTAL	\$1,630,570.00	18,330	\$91,650.00	769,460	\$1,538,920.00

MIAMI BEACH KENNEL CLUB, INC.

Miami Beach, Florida

Officers

WM. H. JOHNSTON, *President*

6300 San Jose Boulevard
Jacksonville, Florida

JAMES PATTON, *Vice-President*

P. O. Box 1895
Jacksonville, Florida

J. R. JOHNSTON, *Secretary-Treasurer*

Columbia Drive
Tulsa, Oklahoma

CARL T. HOFFMAN, *Assistant Secretary*

2326 Alton Road
Miami Beach, Florida

FRANK R. ANDERSON, *Assistant Treasurer*

84 Lake Lane
Belleville, Illinois

Directors

WILLIAM B. GARDNER
JAMES PATTON

WILLIAM H. JOHNSTON
CARL T. HOFFMAN

J. R. JOHNSTON
CHARLES W. BIDWELL, JR.

MIAMI BEACH KENNEL CLUB, INC.

90 Racing Days—January 2, 1956 to April 16, 1956, Incl.—90 Performances

Pari-Mutuel Handle	\$12,080,631.00
Average Performance	134,229.23
Average Wager per Capita	36.10

Total Paid Attendance	334,606
Average Paid Performance Attendance	3,718

*Net Commission = 17% of P-M Handle Less \$170.00
Track Allowance per Race*

STATE REVENUE

3/17 of Net Commission (Counties)	\$ 335,388.93
2/17 of Net Commission (Old Age Assistance)	223,592.62
2/17 of Net Commission (Counties)	223,592.62
25% of Total Breaks (Counties)	16,627.03
75% of Total Breaks (Old Age Assistance)	49,882.48
Admission Tax (Counties)	36,281.12
	\$ 885,364.80
Occupational Licenses (Counties)	1,630.00
Total State Revenue	\$ 886,994.80

TRACK REVENUE

901 Races @ \$170.00 Allowance per Race	\$ 153,170.00
10/17 of Net Commission	1,117,963.10
Total Track Revenue (10.52%)	\$1,271,133.10
Distributed to Public (82.45%)	\$9,960,414.22
Distributed to Public by Track for Minus Pool08
Total Distributed to Public	\$9,960,414.30

Percentage of Daily Double to Total Pool	4.62%
Percentage of Quiniela to Total Pool	70.39%
Percentage of Breaks to Total Pool	0.55%

31

Pool Classification	Amount Wagered	\$10.00 Wagers Number	Wagers Amount	\$5.00 Wagers Number	Wagers Amount	\$2.00 Wagers Number	Wagers Amount
Daily Double	\$ 558,676.00					279,288	\$ 558,576.00
Quiniela	8,503,352.00	91,559	\$915,590.00			3,793,881	7,587,762.00
Win	1,655,220.00			170,594	\$ 852,970.00	401,125	802,250.00
Place	768,646.00			59,462	297,310.00	235,668	471,336.00
Show	594,837.00			35,627	178,135.00	208,351	416,702.00
TOTAL	\$12,080,631.00	91,559	\$915,590.00	265,683	\$1,328,415.00	4,918,313	\$9,836,626.00

The Attendance of 2,429 and Pari-Mutuel Handle of \$88,357.00 for Scholarship Fund Day April 11, 1956 not included in above.

ORANGE PARK KENNEL CLUB

Orange Park, Florida

Officers

WM. H. JOHNSTON, *President*

6300 San Jose, Boulevard
Jacksonville, Florida

JAMES J. PATTON, *Secretary*

814 S. Granada Boulevard
Jacksonville, Florida

JOHN A. RUSH, *Vice-President*

2503 River Boulevard
Jacksonville, Florida

J. R. JOHNSTON, *Treasurer*

2830 So. Columbia Place
Tulsa, Oklahoma

ROBERT J. HART, SR., *Assistant Secretary*

617 University Drive
Coral Gables, Florida

DONALD W. HOWELL, *Assistant Treasurer*

6304 San Jose Boulevard
Jacksonville, Florida

Directors

JOHN A. RUSH
J. R. JOHNSTON

WM. H. JOHNSTON

JAMES J. PATTON
DONALD W. HOWELL

ORANGE PARK KENNEL CLUB, INC.

45 Racing Days—October 1, 1955 to November 23, 1955, Incl.—45 Performances

Pari-Mutuel Handle	\$1,871,887.00
Average Performance	41,597.49
Average Wager per Capita	40.26

STATE REVENUE

3% and 3/17 of Net Commission (Counties)	\$ 54,056.61
2% and 2/17 of Net Commission (Old Age Assistance)	36,037.74
2/17 of Net Commission (Counties)	4,633.18
25% of Total Breaks (Counties)	399.32
50% and 75% of Total Breaks (Old Age Assistance)	5,649.38
Admission Tax (Counties)	4,649.70
	<u>\$ 105,425.93</u>

Occupational Licenses (Counties)	818.50
Total State Revenue	<u>\$ 106,244.43</u>

Total Paid Attendance	46,497
Average Paid Performance Attendance	1,033

*Net Commission = 17% of P-M Handle Less \$170.00
Track Allowance per Race*

TRACK REVENUE

70 Races @ \$170.00 Allowance per Race	\$ 11,900.00
Total Track Breaks	4,451.11
12% and 10/17 of Net Commission	211,593.26
Total Track Revenue (12.18%)	<u>\$ 227,944.37</u>
Distributed to Public (82.44%)	<u>\$1,543,166.40</u>

Percentage of Daily Double to Total Pool	8.97%
Percentage of Quiniela to Total Pool	67.44%
Percentage of Breaks to Total Pool	0.56%

33

Pool Classification	Amount Wagered	\$5.00 Wagers		\$2.00 Wagers	
		Number	Amount	Number	Amount
Daily Double	\$ 167,920.00			83,960	\$ 167,920.00
Quiniela	1,262,292.00			631,146	1,262,292.00
Win	219,149.00	13,607	\$ 68,035.00	75,557	151,114.00
Place	118,903.00	5,325	26,625.00	46,139	92,278.00
Show	103,623.00	2,767	13,835.00	44,894	89,788.00
TOTAL	\$1,871,887.00	21,699	\$108,495.00	881,696	\$1,763,392.00

The Attendance of 1,005 and Pari-Mutuel Handle of \$41,092.00 for Scholarship Fund Day, November 16, 1955 not included in above.

ORANGE PARK KENNEL CLUB, INC.

46 Racing Days—April 12, 1956 to June 4, 1956, Incl.—47 Performances

Pari-Mutuel Handle	\$2,067,042.00
Average Performance	43,979.62
Average Wager per Capita	45.24

STATE REVENUE

3/17 of Net Commission (Counties)	\$ 47,616.60
2/17 of Net Commission (Old Age Assistance)	31,744.40
2/17 of Net Commission (Counties)	31,584.40
25% of Total Breaks (Counties)	2,497.16
75% of Total Breaks (Old Age Assistance)	7,492.14
Admission Tax (Counties)	4,569.30
	<u>\$ 125,504.00</u>

Occupational Licenses (Counties)	26.00
Assumed Names (Counties)	10.00
Total State Revenue	<u>\$ 125,540.00</u>

Total Paid Attendance	45,693
Average Paid Performance Attendance	972

Net Commission = 17% of P-M Handle Less \$170.00
Track Allowance per Race

TRACK REVENUE

463 Races @ \$170.00 Allowance per Race	\$ 78,710.00
10/17 of Net Commission	161,741.74
Total Track Revenue (11.60%)	<u>\$ 240,451.74</u>
Distributed to Public (82.52%)	\$1,705,655.56
Distributed to Public by Track for Minus Pool	7.74
Total Distributed to Public	<u>\$1,705,663.30</u>

Percentage of Daily Double to Total Pool	10.16%
Percentage of Quiniela to Total Pool	69.73%
Percentage of Breaks to Total Pool	0.48%

34

Pool Classification	Amount Wagered	\$5.00 Wagers		\$2.00 Wagers	
		Number	Amount	Number	Amount
Daily Double	\$ 210,064.00			105,032	\$ 210,064.00
Quiniela	1,441,310.00			720,655	1,441,310.00
Win	195,180.00	10,778	\$53,890.00	70,645	141,290.00
Place	116,671.00	4,289	21,445.00	47,613	95,226.00
Show	103,817.00	2,453	12,265.00	45,776	91,552.00
TOTAL	\$2,067,042.00	17,520	\$87,600.00	989,721	\$1,979,442.00

Faint, illegible text, possibly bleed-through from the reverse side of the page. The text is too light to transcribe accurately.



B

PALM BEACH KENNEL CLUB, INC.
West Palm Beach, Florida

Officers

JOHN E. BOGGIANO, *President*
45 Christopher St.
New York, N. Y.

SAM C. LOMBARDO, *Vice-President*
3600 Ridge Road
Cleveland, Ohio

JOHN G. MASONI, *Secretary-Treasurer*
3600 Ridge Road
Cleveland, Ohio

Directors

SAM C. LOMBARDO

JOHN E. BOGGIANO

JOHN G. MASONI

PALM BEACH KENNEL CLUB, INC.

90 Racing Days—December 26, 1955 to April 10, 1956, Incl.—90 Performances

Pari-Mutuel Handle.....	\$6,935,273.00
Average Performance.....	77,058.59
Average Wager per Capita.....	36.21

STATE REVENUE

3/17 of Net Commission (Counties)	\$ 180,098.19
2/17 of Net Commission (Old Age Assistance).....	120,065.46
2/17 of Net Commission (Counties)	120,065.46
25% of Total Breaks (Counties)	10,919.20
75% of Total Breaks (Old Age Assistance).....	32,756.80
Admission Tax (Counties).....	19,479.48
	<u>\$ 483,384.59</u>
Occupational Licenses (Counties).....	1,423.75
Assumed Names (Counties).....	30.00
Total State Revenue.....	<u>\$ 484,838.34</u>

Total Paid Attendance.....	191,550
Average Paid Performance Attendance.....	2,128

Net Commission = 17% of P-M Handle Less \$170.00
Track Allowance per Race

TRACK REVENUE

932 Races @ \$170.00 Allowance per Race.....	\$ 158,440.00
10/17 of Net Commission.....	600,327.30
Total Track Revenue (10.94%).....	<u>\$ 758,767.30</u>
Distributed to Public (82.37%).....	\$5,712,600.59
Distributed to Public by Track for Minus Pool.....	37.61
Total Distributed to Public.....	<u>\$5,712,638.20</u>
Percentage of Daily Double to Total Pool.....	8.99%
Percentage of Quiniela to Total Pool.....	65.00%
Percentage of Breaks to Total Pool.....	0.63%

37

Pool Classification	Amount Wagered	\$5.00 Wagers		\$2.00 Wagers	
		Number	Amount	Number	Amount
Daily Double.....	\$ 623,468.00		\$	311,734	\$ 623,468.00
Quiniela.....	4,508,104.00			2,254,052	4,508,104.00
Win.....	836,085.00	72,127	360,635.00	237,725	475,450.00
Place.....	478,738.00	33,656	168,280.00	155,229	310,458.00
Show.....	488,878.00	22,576	112,880.00	187,999	375,998.00
TOTAL	\$6,935,273.00	128,359	\$641,795.00	3,146,739	\$6,293,478.00

The Attendance of 1,696 and Pari-Mutuel Handle of \$70,815.00 for Scholarship Fund Day, April 3, 1956, not included in above.

PENSACOLA KENNEL CLUB, INC.

Pensacola, Florida

Officers

J. C. PACE, *Chairman of the Board*

San Carlos Hotel
Pensacola, Florida

CARL T. JOHNSON, *Executive Vice-President and Secretary*

322 Brent Building
Pensacola, Florida

AL VILLANE, *Vice-President*

101 South "O" Street
Pensacola, Florida

HERBERT LATHAM, *Vice-President*

Florida National Bank Building
Pensacola, Florida

DR. ALVYN WHITE, *Treasurer*

1750 N. Palafox Street
Pensacola, Florida

Directors

CARL T. JOHNSON

J. W. DASHIER

MARTIN RAY

J. C. PACE

DR. ALVYN WHITE

HERBERT LATHAM

AL VILLANE

W. W. HARBESON

R. P. STRITZINGER

PENSACOLA KENNEL CLUB, INC.

62 Racing Days—July 1, 1955 to September 12, 1955, Incl.—76 Performances

Pari-Mutuel Handle	\$2,407,431.00
Average Performance	31,676.72
Average Wager per Capita	36.23

Total Paid Attendance	66,453
Average Paid Performance Attendance	874

STATE REVENUE

3% of P-M Handle (Counties)	\$ 68,039.16
(3%) Sliding Scale Rate (Counties)	1,200.00
2% of P-M Handle (Old Age Assistance)	45,359.44
(2%) Sliding Scale Rate (Old Age Assistance)	800.00
50% of Breaks (Old Age Assistance)	8,073.03
Admission Tax (Counties)	7,228.20
	<u>\$ 130,699.83</u>
Occupational Licenses (Counties)	1,428.00
Assumed Names (Counties)	10.00
Total State Revenue	<u>\$ 132,137.83</u>

TRACK REVENUE FROM P-M HANDLE

Track Share of P-M Handle	\$ 293,864.67
50% of Breaks	8,072.60
Total Track Revenue (12.54%)	<u>\$ 301,937.27</u>
Distributed to Public (82.33%)	\$1,982,022.10
Percentage of Daily Double to Total Pool	5.86%
Percentage of Quiniela to Total Pool	65.96%
Percentage of Breaks to Total Pool	0.67%

39

Pool Classification	Amount Wagered	\$5.00 Wagers		\$2.00 Wagers	
		Number	Amount	Number	Amount
Daily Double	\$ 141,140.00		\$	70,570	\$ 141,140.00
Quiniela	1,587,924.00			793,962	1,587,924.00
Win	262,342.00	14,866	74,330.00	94,006	188,012.00
Place	189,748.00	6,782	33,910.00	77,919	155,838.00
Show	226,277.00	4,679	23,395.00	101,441	202,882.00
TOTAL	\$2,407,431.00	26,327	\$131,635.00	1,137,898	\$2,275,796.00

PENSACOLA KENNEL CLUB, INC.

24 Racing Days—June 1, 1956 to June 30, 1956, Incl.—29 Performances

Pari-Mutuel Handle	\$998,446.00
Average Performance	34,429.17
Average Wager per Capita	33.15

STATE REVENUE

3/17 of Net Commission and Sliding Scale Rate (Counties)	\$ 20,358.63
2/17 of Net Commission and Sliding Scale Rate (Old Age Assistance)	13,572.42
2/17 of Net Commission (Counties)	13,172.42
25% of Total Breaks (Counties)	1,954.53
75% of Total Breaks (Old Age Assistance)	5,863.56
Admission Tax (Counties)	3,012.20
	<u>\$ 57,933.76</u>
Occupational Licenses (Counties)	142.25
Total State Revenue	<u>\$ 58,076.01</u>

Total Paid Attendance	30,122
Average Paid Performance Attendance	1,039
<i>Net Commission = 17% of P-M Handle Less \$170.00</i>	
<i>Track Allowance per Race</i>	

TRACK REVENUE

270 Races @ \$170.00 Allowance per Race	\$ 45,900.00
30 Races on Sliding Scale Rate	10,870.25
10/17 of Net Commission	65,862.10
Total Track Revenue (12.28%)	<u>\$122,632.35</u>
Distributed to Public (82.22%)	\$820,892.09
Distributed to Public by Track Minus Pool	1.91
Total Distributed to Public	<u>\$820,894.00</u>
Percentage of Daily Double to Total Pool	4.77%
Percentage of Quiniela to Total Pool	64.55%
Percentage of Breaks to Total Pool	0.78%

40

Pool Classification	Amount Wagered	\$5.00 Wagers		\$2.00 Wagers	
		Number	Amount	Number	Amount
Daily Double	\$ 47,602.00		\$	23,801	\$ 47,602.00
Quiniela	644,542.00			322,271	644,542.00
Win	123,828.00	6,470	32,350.00	45,739	91,478.00
Place	83,209.00	2,391	11,955.00	35,627	71,254.00
Show	99,265.00	1,957	9,785.00	44,740	89,480.00
TOTAL	\$998,446.00	10,818	\$54,090.00	472,178	\$944,356.00

The Attendance of 970 and Pari-Mutuel Handle of \$34,226.00 for Scholarship Fund Day, June 4, 1956, not included in above.
The Attendance of 1,113 and Pari-Mutuel Handle of \$36,760.00 for Charity Day, June 5, 1956, not included in above.



ST. PETERSBURG KENNEL CLUB, INC.

St. Petersburg, Florida

Officers

J. E. BROOKS, *President*

1261 Brightwaters Boulevard

St. Petersburg, Florida

A. V. WEAVER, *Vice-President*

5190 38th Avenue, North

St. Petersburg, Florida

OTTO L. WEAVER, *Secretary-Treasurer*

800 26th Avenue, North

St. Petersburg, Florida

L. C. SHAW, *Assistant Secretary-Treasurer*

1135 12th Street, North

St. Petersburg, Florida

Directors

J. E. BROOKS

A. V. WEAVER

L. C. SHAW

A. D. WEAVER

OTTO L. WEAVER

A. V. LAUGHNER

C. E. LOUGHRIDGE

ST. PETERSBURG KENNEL CLUB, INC.

90 Racing Days—January 2, 1956 to April 17, 1956, Incl.—122 Performances

Pari-Mutuel Handle.....	\$12,446,662.00
Average Performance.....	102,021.80
Average Wager per Capita.....	32.02

STATE REVENUE

3/17 of Net Commission (Counties).....	\$ 336,799.86
2/17 of Net Commission (Old Age Assistance).....	224,533.24
2/17 of Net Commission (Counties).....	224,533.24
25% of Total Breaks (Counties).....	21,441.44
75% of Total Breaks (Old Age Assistance).....	64,324.60
Admission Tax (Counties).....	40,016.21
	\$ 911,648.59
Occupational Licenses (Counties).....	2,411.25
Assumed Names (Counties).....	10.00
Total State Revenue.....	\$ 914,069.84

Total Paid Attendance.....	388,688
Average Paid Performance Attendance.....	3,186

*Net Commission = 17% of P-M Handle Less \$170.00
Track Allowance per Race*

TRACK REVENUE

1,220 Races @ \$170.00 Allowance per Race.....	\$ 207,400.00
10/17 of Net Commission.....	1,122,666.20
Total Track Revenue (10.69%).....	\$ 1,330,066.20
Distributed to Public (82.31%).....	\$10,244,963.42
Distributed to Public by Track for Minus Pool.....	47.98
Total Distributed to Public.....	\$10,245,011.40
Percentage of Daily Double to Total Pool.....	7.65%
Percentage of Quiniela to Total Pool.....	66.45%
Percentage of Breaks to Total Pool.....	0.69%

43

Pool Classification	Amount Wagered	\$10.00 Wagers		\$5.00 Wagers		\$2.00 Wagers	
		Number	Amount	Number	Amount	Number	Amount
Daily Double.....	\$ 952,076.00		\$		\$	476,038	\$ 952,076.00
Quiniela.....	8,270,352.00	41,317	413,170.00			3,928,591	7,857,182.00
Win.....	1,373,027.00			85,551	427,755.00	472,636	945,272.00
Place.....	910,844.00			41,776	208,880.00	350,982	701,964.00
Show.....	940,363.00			29,059	145,295.00	397,534	795,068.00
TOTAL.....	\$12,446,662.00	41,317	\$413,170.00	156,386	\$781,930.00	5,625,781	\$11,251,562.00

The Attendance of 2,014 and Pari-Mutuel Handle of \$67,851.00 for Scholarship Fund Day, January 19, 1956, not included in above.

SANFORD-ORLANDO KENNEL CLUB, INC.

Longwood, Florida

Officers

W. C. ANDERSON, *President and Treasurer*

740 Old Post Road
Fairfield, Connecticut

MRS. JAMES DAVEY, *Vice-President and Assistant Secretary*

20 Church Street
Greenwich, Connecticut

MRS. FRANK B. NICHOLS, *Second Vice-President*

1313 Greenbay Road
Lake Forest, Illinois

R. C. WILLIAMSON, *Secretary*

Longwood, Florida

Directors

W. C. ANDERSON

ANABEL MCPADDEN DAVEY
MARY KELLY

KATHERINE NICHOLS
R. C. WILLIAMSON

SANFORD-ORLANDO KENNEL CLUB, INC.

90 Racing Days—December 26, 1955 to April 11, 1956, Incl.—122 Performances

Pari-Mutuel Handle.....	\$5,175,391.00
Average Performance	42,421.38
Average Wager per Capita.....	43.02

Total Paid Attendance.....	120,312
Average Paid Performance Attendance.....	986

Net Commission = 17% of P-M Handle Less \$170.00
Track Allowance per Race

STATE REVENUE

3/17 of Net Commission and Sliding Scale Rate (Counties).....	\$ 117,100.23
2/17 of Net Commission and Sliding Scale Rate (Old Age Assistance).....	78,066.82
2/17 of Net Commission (Counties).....	77,626.82
25% of Total Breaks (Counties)	7,817.15
75% of Total Breaks (Old Age Assistance).....	23,450.72
Admission Tax (Counties).....	12,151.21
	<u>\$ 316,212.95</u>
Occupational Licenses (Counties).....	891.75
Assumed Names (Counties).....	40.00
Total State Revenue.....	<u>\$ 317,144.70</u>

TRACK REVENUE

1,223 Races @ \$170.00 Allowance per Race.....	\$ 207,910.00
30 Races on Sliding Scale Rate.....	10,978.50
10/17 of Net Commission.....	388,134.10
Total Track Revenue (11.73%).....	<u>\$ 607,022.60</u>
Distributed to Public (82.40%).....	\$4,264,306.66
Distributed to Public by Track Minus Pool.....	6.04
Total Distributed to Public.....	<u>\$4,264,312.70</u>
Percentage of Daily Double to Total Pool.....	8.17%
Percentage of Quiniela to Total Pool.....	64.66%
Percentage of Breaks to Total Pool.....	0.60%

45

Pool Classification	Amount Wagered	\$5.00 Wagers		\$2.00 Wagers	
		Number	Amount	Number	Amount
Daily Double.....	\$ 422,958.00		\$	211,479	\$ 422,958.00
Quiniela.....	3,346,244.00			1,673,122	3,346,244.00
Win.....	644,204.00	46,296	231,480.00	206,362	412,724.00
Place.....	403,032.00	22,236	111,180.00	145,926	291,852.00
Show.....	358,953.00	12,921	64,605.00	147,174	294,348.00
TOTAL	\$5,175,391.00	81,453	\$407,265.00	2,384,063	\$4,768,126.00

The Attendance of 762 and Pari-Mutuel Handle of \$32,653.00 for Scholarship Fund Day, January 19, 1956, not included in above.
The Attendance of 1,253 and Pari-Mutuel Handle of \$49,322.00 for Charity Day, February 9, 1956, not included in above.

SARASOTA KENNEL CLUB, INC.

Sarasota, Florida

Officers

GUS WIDEN, *President*

Chicago, Illinois

C. E. NEWMAN, *Vice-President*

Sarasota, Florida

JERRY COLLINS, *Secretary-Treasurer*

Sarasota, Florida

Directors

C. E. NEWMAN

GUS WIDEN

JERRY COLLINS

SARASOTA KENNEL CLUB, INC.

80 Racing Days—February 29, 1956 to June 2, 1956, Incl.—108 Performances

Pari-Mutuel Handle.....	\$5,645,643.00*
Average Performance.....	52,274.47
Average Wager per Capita.....	52.54

Total Paid Attendance.....	107,447
Average Paid Performance Attendance.....	995

*Net Commission = 17% of P-M Handle Less \$170.00
Track Allowance per Race*

STATE REVENUE

3/17 of Net Commission (Counties)	\$ 136,129.29
2/17 of Net Commission (Old Age Assistance).....	90,752.86
2/17 of Net Commission (Counties)	90,752.86
25% of Total Breaks (Counties)	7,848.89
75% of Total Breaks (Old Age Assistance).....	23,547.14
Admission Tax (Counties).....	11,116.35
	\$ 360,147.39
Occupational Licenses (Counties).....	832.75
Total State Revenue.....	\$ 360,980.14

TRACK REVENUE

1,108 Races @ \$170.00 Allowance per Race.....	\$ 188,360.00
10/17 of Net Commission.....	453,764.30
Total Track Revenue (11.40%).....	\$ 642,124.30
Distributed to Public (82.44%).....	\$4,654,487.66
Distributed to Public by Track for Minus Pool.....	4.84
Total Distributed to Public.....	\$4,654,492.50
Percentage of Daily Double to Total Pool.....	7.74%
Percentage of Quiniela to Total Pool.....	69.22%
Percentage of Breaks to Total Pool.....	0.56%

47

Pool Classification	Amount Wagered	\$10.00 Wagers		\$5.00 Wagers		\$2.00 Wagers	
		Number	Amount	Number	Amount	Number	Amount
Daily Double.....	\$ 437,222.00		\$		\$	218,611	\$ 437,222.00
Quiniela.....	3,907,748.00	27,836	278,360.00			1,814,694	3,629,388.00
Win.....	561,622.00			35,588	177,940.00	191,841	383,682.00
Place.....	388,796.00			19,272	96,360.00	146,218	292,436.00
Show.....	350,254.00			9,964	49,820.00	150,217	300,434.00
TOTAL.....	\$5,645,642.00	27,836	\$278,360.00	64,824	\$324,120.00	2,521,581	\$5,043,162.00

* Tote Pool over \$1.00 June 2, 1956.

The Attendance of 988 and Pari-Mutuel Handle of \$36,351.00 for Scholarship Fund Day, March 8, 1956, not included in above.

The Attendance of 651 and Pari-Mutuel Handle of \$31,401.00 for University of Miami Day, April 17, 1956, not included in above.

VOLUSIA COUNTY KENNEL CLUB, INC.
Daytona Beach, Florida

Officers

L. M. KIRKPATRICK, *Chairman*
Ripley, Tennessee

H. E. TOOKE, JR., *President*
Sanford, Florida

W. L. KIRKPATRICK, *Vice-President*
Ripley, Tennessee

R. H. COFFMAN, *Secretary-Treasurer*
Daytona Beach, Florida

Directors

H. E. TOOKE, JR.

L. M. KIRKPATRICK
R. H. COFFMAN

W. L. KIRKPATRICK

VOLUSIA COUNTY KENNEL CLUB, INC.

68 Racing Days—July 1, 1955 to September 17, 1955, Incl.—93 Performances

Pari-Mutuel Handle	\$8,014,545.00
Average Performance	86,177.90
Average Wager per Capita.....	33.99

Total Paid Attendance.....	235,806
Average Paid Performance Attendance.....	2,536

STATE REVENUE

3% of P-M Handle (Counties).....	\$ 240,436.35
2% of P-M Handle (Old Age Assistance).....	160,290.90
50% of Breaks (Old Age Assistance).....	24,150.48
Admission Tax (Counties).....	26,131.81
	<u>\$ 451,009.54</u>
Occupational Licenses (Counties).....	\$ 2,866.00
Assumed Names (Counties).....	80.00
Total State Revenue.....	<u>\$ 453,955.54</u>

TRACK REVENUE FROM P-M HANDLE

12% of P-M Handle.....	\$ 961,745.40
50% of Breaks.....	24,149.97
Total Track Revenue (12.30%).....	<u>\$ 985,895.37</u>
Distributed to Public (82.40%).....	<u>\$6,603,771.90</u>

Percentage of Daily Double to Total Pool.....	7.31%
Percentage of Quiniela to Total Pool.....	66.76%
Percentage of Breaks to Total Pool.....	0.60%

6

Pool Classification	Amount Wagered	\$5.00 Wagers		\$2.00 Wagers	
		Number	Amount	Number	Amount
Daily Double	\$ 585,692.00			292,846	\$ 585,692.00
Quiniela	5,350,316.00			2,675,158	5,350,316.00
Win	940,702.00	64,680	\$323,400.00	308,651	617,302.00
Place	557,489.00	29,771	148,855.00	204,317	408,634.00
Show	580,346.00	18,536	92,680.00	243,833	487,666.00
TOTAL	\$8,014,545.00	112,987	\$564,935.00	3,724,805	\$7,449,610.00

VOLUSIA COUNTY KENNEL CLUB, INC.

23 Racing Days—June 4, 1956 to June 30, 1956, Incl.—31 Performances

Pari-Mutuel Handle	\$2,265,424.00
Average Performance	73,078.19
Average Wager per Capita.....	33.75

Total Paid Attendance.....	67,118
Average Paid Performance Attendance.....	2,165

*Net Commission = 17% of P-M Handle Less \$170.00
Track Allowance per Race*

STATE REVENUE

3/17 of Net Commission (Counties)	\$ 58,422.72
2/17 of Net Commission (Old Age Assistance).....	38,948.48
2/17 of Net Commission (Counties).....	38,948.48
25% of Total Breaks (Counties).....	3,775.82
75% of Total Breaks (Old Age Assistance).....	11,327.76
Admission Tax (Counties).....	7,062.62
	<u>\$ 158,485.88</u>
Occupational Licenses (Counties).....	\$ 460.75
Total State Revenue	<u>\$ 158,946.63</u>

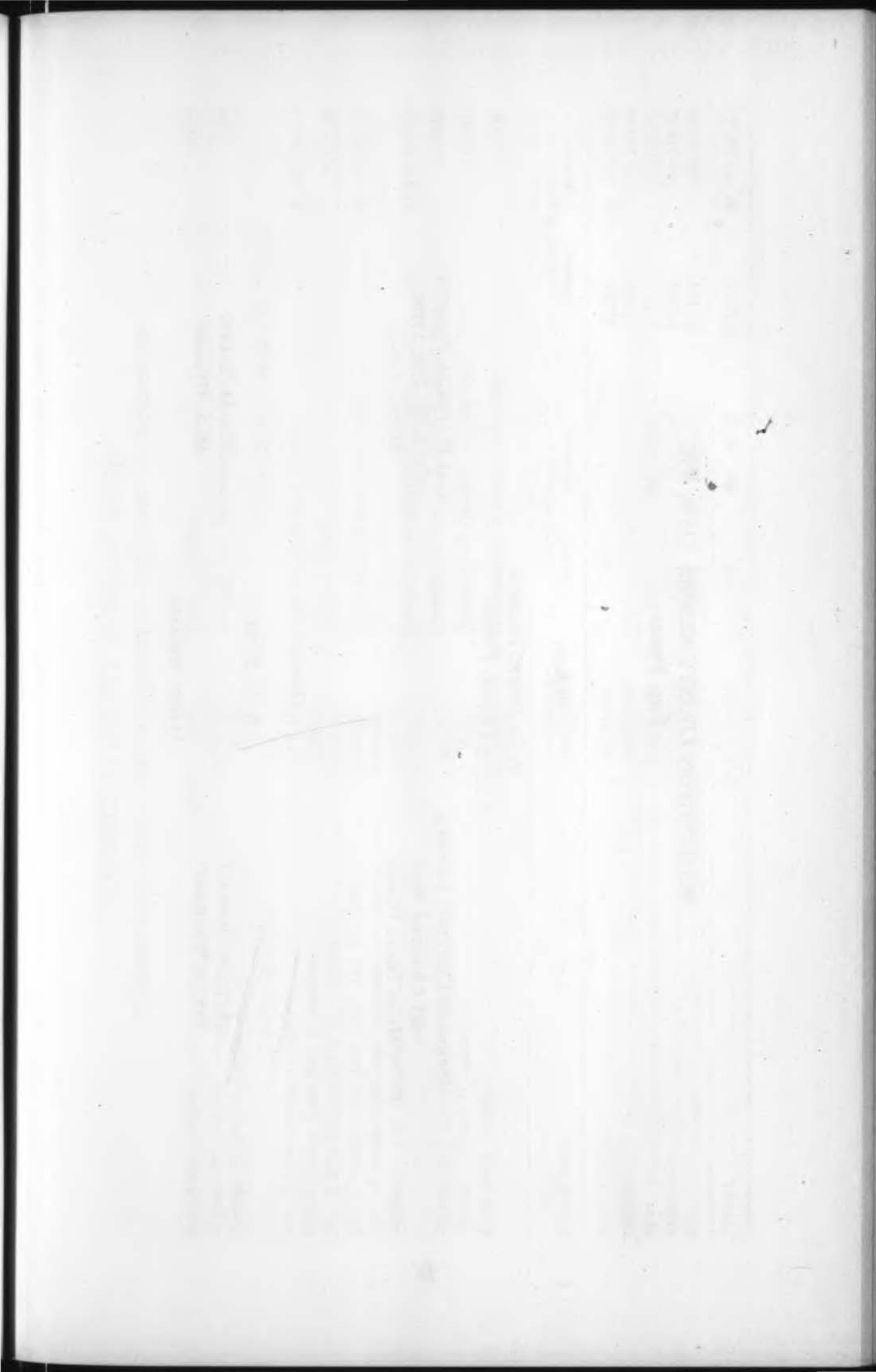
TRACK REVENUE

318 Races @ \$170.00 Allowance per Race.....	\$ 54,060.00
10/17 of Net Commission.....	194,742.40
Total Track Revenue (10.98%).....	<u>\$ 248,802.40</u>
Distributed to Public (82.33%).....	\$1,865,198.34
Distributed to Public by Track for Minus Pool.....	\$ 8.16
Total Distributed to Public.....	<u>\$1,865,206.50</u>
Percentage of Daily Double to Total Pool.....	6.86%
Percentage of Quiniela to Total Pool.....	64.72%
Percentage of Breaks to Total Pool.....	0.67%

50

Pool Classification	Amount Wagered	\$10.00 Wagers		\$5.00 Wagers		\$2.00 Wagers	
		Number	Amount	Number	Amount	Number	Amount
Daily Double	\$ 155,348.00					77,674	\$ 155,348.00
Quiniela	1,466,234.00	14,189	\$141,890.00			662,172	1,324,344.00
Win	288,791.00			26,041	\$130,205.00	79,293	158,586.00
Place	163,723.00			11,263	56,315.00	53,704	107,408.00
Show	191,328.00			8,066	40,330.00	75,499	150,998.00
TOTAL	\$2,265,424.00	14,189	\$141,890.00	45,370	\$226,850.00	948,342	\$1,896,684.00

The Attendance of 2,053 and Pari-Mutuel Handle of \$62,286.00 for Scholarship Fund Day June 14, 1956, not included in above.



WASHINGTON COUNTY KENNEL CLUB, INC.

Ebro, Florida

Officers

A. L. DUNN, *President*
Chipley, Florida

STRATTON DEMETRE, *Secretary*
1825 Cleveland Road
Miami Beach, Florida

TOM D. TRULIS, *Treasurer*
1920 S. W. 25th Avenue
Miami, Florida

Directors

A. L. DUNN

STRATTON DEMETRE
EULESS WATFORD

HARRY EDWARDS

TOM D. TRULIS
M. S. HUGGINS

WASHINGTON COUNTY KENNEL CLUB, INC.

72 Racing Days—July 1, 1955 to September 22, 1955, Incl.—72 Performances

Pari-Mutuel Handle	\$1,370,916.00
Average Performance	19,040.50
Average Wager per Capita	27.08

Total Attendance	50,622
Average Paid Performance Attendance	703

STATE REVENUE

3% of P-M Handle (Counties)	\$ 21,870.15
(3%) Sliding Scale Rate (Counties)	4,380.00
2% of P-M Handle (Old Age Assistance)	14,580.10
(2%) Sliding Scale Rate (Old Age Assistance)	2,920.00
50% of Breaks (Old Age Assistance)	5,659.49
Admission Tax (Counties)	5,205.60
	\$ 54,615.34
Occupational Licenses (Counties)	821.75
Assumed Names (Counties)	20.00
Total State Revenue	\$ 55,457.09

TRACK REVENUE FROM P-M HANDLE

Track Share of P-M Handle	\$ 189,305.47
50% of Breaks	5,659.09
Total Track Revenue (14.22%)	\$ 194,964.56
Distributed to Public (82.17%)	\$1,126,541.70
Percentage of Daily Double to Total Pool	4.46%
Percentage of Quiniela to Total Pool	54.65%
Percentage of Breaks to Total Pool	0.83%

53

Pool Classification	Amount Wagered	\$5.00 Wagers		\$2.00 Wagers	
		Number	Amount	Number	Amount
Daily Double	\$ 61,136.00			30,568	\$ 61,136.00
Quiniela	749,180.00			374,590	749,180.00
Win	218,675.00	11,529	\$57,645.00	80,515	161,030.00
Place	143,470.00	4,710	23,550.00	59,960	119,920.00
Show	198,455.00	3,651	18,255.00	90,100	180,200.00
TOTAL	\$1,370,916.00	19,890	\$99,450.00	635,733	\$1,271,466.00

WASHINGTON COUNTY KENNEL CLUB, INC.

14 Racing Days—June 15, 1956 to June 30, 1956, Incl.—14 Performances

Pari-Mutuel Handle	\$306,365.00
Average Performance	21,883.21
Average Wager per Capita	22.78

Total Paid Attendance	13,446
Average Paid Performance Attendance	960

*Net Commission = 17% of P-M Handle Less \$170.00
Track Allowance per Race*

STATE REVENUE

3/17 of Net Commission and Sliding Scale Rate (Counties)	\$ 3,851.28
2/17 of Net Commission and Sliding Scale Rate (Old Age Assistance)	2,567.52
2/17 of Net Commission (Counties)	1,927.52
25% of Total Breaks (Counties)	751.49
75% of Total Breaks (Old Age Assistance)	2,254.67
Admission Tax (Counties)	1,344.60
	<u>\$ 12,697.08</u>
Total State Revenue	<u>\$ 12,697.08</u>

TRACK REVENUE

55 Races @ \$170.00 Allowance per Race	\$ 9,350.00
92 Races on Sliding Scale Rate	24,748.13
10/17 of Net Commission	9,637.60
Total Track Revenue (14.28%)	<u>\$ 43,735.73</u>
Distributed to Public (82.02%)	<u>\$251,276.79</u>
Distributed to Public by Track for Minus Pool	1.81
Total Distributed to Public	<u>\$251,278.60</u>
Percentage of Daily Double to Total Pool	4.34%
Percentage of Quiniela to Total Pool	53.98%
Percentage of Breaks to Total Pool	0.98%

54

Pool Classification	Amount Wagered	\$5.00 Wagers		\$2.00 Wagers	
		Number	Amount	Number	Amount
Daily Double	\$ 13,298.00			6,649	\$ 13,298.00
Quiniela	165,360.00			82,680	165,360.00
Win	53,792.00	3,216	\$16,080.00	18,856	37,712.00
Place	32,516.00	1,146	5,730.00	13,393	26,786.00
Show	41,399.00	991	4,955.00	18,222	36,444.00
TOTAL	\$306,365.00	5,353	\$26,765.00	139,800	\$279,600.00

Page 57 (cont.)
1952-1953

1952-1953

1952-1953

1952-1953

1952-1953

1952-1953

1952-1953

1952-1953

WEST FLAGLER KENNEL CLUB, INC.
Miami, Florida

Officers

I. HECHT, JR., *President*
4213 Nautilus Drive
Miami Beach, Florida

JACK COOPER, *Vice-President*
6444 Allison Island
Miami Beach, Florida

LAURENCE S. LEVENSON, *Vice-President*
575 Grand Concourse
Miami Shores, Florida

SIDNEY LEFCOURT, *Secretary-Treasurer*
36 Bay Heights Drive
Miami, Florida

Directors

I. HECHT, JR.

JACK COOPER
SIDNEY LEFCOURT

STUART GORDON

LAURENCE S. LEVENSON
ROBERT J. GORDON

LOUIS GROSSMAN

WEST FLAGLER KENNEL CLUB, INC.

90 Racing Days—January 6, 1956 to April 20, 1956, Incl.—90 Performances

Pari-Mutuel Handle	\$14,248,539.00
Average Performance	158,317.10
Average Wager per Capita	34.09

STATE REVENUE

3/17 of Net Commission (Counties).....	\$ 399,526.17
2/17 of Net Commission (Old Age Assistance).....	266,350.78
2/17 of Net Commission (Counties).....	266,350.78
25% of Total Breaks (Counties).....	21,610.30
75% of Total Breaks (Old Age Assistance).....	64,831.53
Admission Tax (Counties).....	42,132.30
	\$ 1,060,801.86
Occupational Licenses (Counties).....	2,411.75
Total State Revenue.....	\$ 1,063,213.61

Total Paid Attendance.....	417,935
Average Paid Performance Attendance.....	4,644

*Net Commission = 17% of P-M Handle Less \$170.00
Track Allowance per Race*

TRACK REVENUE

931 Races @ \$170.00 Allowance per Race.....	\$ 158,270.00
10/17 of Net Commission.....	1,331,753.90
Total Track Revenue (10.45%).....	\$ 1,490,023.90
Distributed to Public (82.40%).....	\$11,739,845.54
Distributed to Public by Track for Minus Pool.....	348.36
Total Distributed to Public.....	\$11,740,193.90
Percentage of Daily Double to Total Pool.....	5.59%
Percentage of Quiniela to Total Pool.....	67.26%
Percentage of Breaks to Total Pool.....	0.60%

57

Pool Classification	Amount Wagered	\$10.00 Wagers Number Amount	\$5.00 Wagers Number Amount	\$2.00 Wagers Number Amount
Daily Double	\$ 796,128.00	3,371 \$ 33,710.00	7,106 \$ 35,530.00	363,444 \$ 726,888.00
Quiniela	9,584,088.00	89,457 894,570.00	133,080 665,400.00	4,012,059 8,024,118.00
Win	1,893,738.00	56,537 565,370.00	61,036 305,180.00	511,594 1,023,188.00
Place	993,475.00	19,678 196,780.00	25,415 127,075.00	334,810 669,620.00
Show	981,110.00	16,524 165,240.00	20,764 103,820.00	356,025 712,050.00
TOTAL	\$14,248,539.00	185,567 \$1,855,670.00	247,401 \$1,237,005.00	5,577,932 \$11,155,864.00

The Attendance of 2,468 and Pari-Mutuel Handle of \$83,389.00 for Scholarship Fund Day, April 11, 1956, not included in above.

FRONTON EXHIBITION COMPANY, INC.
Miami, Florida

Officers

RICHARD I. BERENSON, *President*
109 E. Rivo Alto Island
Miami Beach, Florida

SAMUEL PINANSKI, *Vice-President*
646 Washington Street
Boston, Massachusetts

JOSEPH WEINBERG, *Treasurer*
151 Milk Street
Boston, Massachusetts

GEORGE A. WORLEY, *Secretary and Chairman of Board*
1616 Brickell Avenue
Miami, Florida

BENJAMIN A. TRUSTMAN, *Asst. Secretary and Asst. Treasurer*
75 Federal Street
Boston, Massachusetts

Directors

GEORGE A. WORLEY

RICHARD I. BERENSON

SAMUEL PINANSKI

JOSEPH WEINBERG

REUBEN B. GRYZMISH

FRONTON EXHIBITION COMPANY, INC. — (MIAMI JAI-ALAI)
 100 Playing Days—December 14, 1955 to April 10, 1956, Incl.—100 Performances

Pari-Mutuel Handle	\$6,805,812.00
Average Performance	68,058.12
Average Wager per Capita.....	22.08

STATE REVENUE

3% of P-M Handle (Counties).....	\$ 204,174.36
2% of P-M Handle (Old Age Assistance).....	136,116.24
50% of Breaks (Old Age Assistance).....	15,879.48
Admission Tax (Counties).....	32,028.01
	<u>\$ 388,198.09</u>
Occupational Licenses (Counties).....	968.50
Total State Revenue.....	<u>\$ 389,166.59</u>

Total Attendance	308,118
Average Paid Performance Attendance.....	3,081

TRACK REVENUE FROM P-M HANDLE

12% of P-M Handle.....	\$ 816,697.44
50% of Breaks.....	15,878.98
Total Fronton Revenue (12.23%).....	<u>\$ 832,576.42</u>
Distributed to Public from P-M Handle (82.53%).....	<u>\$5,617,065.50</u>
Distributed to Public from Minus Pool.....	3.60
Total Distributed to Public.....	<u>\$5,617,069.10</u>

Percentage of Daily Double to Total Pool.....	6.11%
Percentage of Quiniela to Total Pool.....	58.51%
Percentage of Quiniela Exacta to Total Pool.....	15.31%
Percentage of Breaks to Total Pool.....	0.47%

59

Pool Classification	Amount Wagered	\$10.00 Wagers		\$5.00 Wagers		\$2.00 Wagers	
		Number	Amount	Number	Amount	Number	Amount
Daily Double	\$ 415,956.00					207,978	\$ 415,956.00
Quiniela	3,982,378.00					1,991,189	3,982,378.00
Quiniela Exacta	1,041,980.00					520,990	1,041,980.00
Win	692,808.00	10,435	\$104,350.00	28,838	\$144,190.00	222,134	444,268.00
Place	408,081.00	3,630	36,300.00	15,461	77,305.00	147,238	294,476.00
Show	264,609.00	2,205	22,050.00	8,429	42,145.00	100,207	200,414.00
TOTAL	\$6,805,812.00	16,270	\$162,700.00	52,728	\$263,640.00	3,189,736	\$6,379,472.00

The Attendance of 2,553 and Pari-Mutuel Handle of \$49,773.00 for Scholarship Fund Day, December 15, 1955 not included in above.
 The Attendance of 2,495 and Pari-Mutuel Handle of \$50,065.00 for Charity Day, December 20, 1955 not included in above.

THE FRONTON, INC.
West Palm Beach, Florida

Officers

ARTHUR ZIMMET, *President*
2312 N. Oleander Drive
Daytona Beach, Florida

PHYLLIS STABELL, *Secretary*
2604 Peninsula Drive
Daytona Beach, Florida

JAMES KIRKLAND, *Treasurer*
2561 S. Atlantic Avenue
Daytona Beach, Florida

Directors

PHYLLIS STABELL

ARTHUR ZIMMET

JAMES KIRKLAND

THE FRONTON, INC. — (JAI-ALAI)

77 Playing Days—January 12, 1956 to April 10, 1956, Incl.—77 Performances

Pari-Mutuel Handle	\$1,771,082.00
Average Performance	23,001.06
Average Wager per Capita	14.97

STATE REVENUE

3% of P-M Handle (Counties)	\$ 53,132.46
2% of P-M Handle (Old Age Assistance)	35,421.64
50% of Breaks (Old Age Assistance)	5,091.82
Admission Tax (Counties)	13,239.08
	<u>\$ 106,885.00</u>
Occupational Licenses (Counties)	946.25
Total State Revenue	<u>\$ 107,831.25</u>

Total Attendance	118,299
Average Paid Performance Attendance	1,536

TRACK REVENUE FROM P-M HANDLE

12% of P-M Handle	\$ 212,529.84
50% of Breaks	5,091.40
Total Fronton Revenue (12.29%)	<u>\$ 217,621.24</u>
Distributed to Public from P-M Handle (82.42%)	<u>\$1,459,814.84</u>
Distributed to Public from Minus Pool	1.16
Total Distributed to Public	<u>\$1,459,816.00</u>

Percentage of Daily Double to Total Pool	5.52%
Percentage of Quiniela to Total Pool	48.88%
Percentage of Quiniela Perfecta to Total Pool	17.19%
Percentage of Breaks to Total Pool	0.58%

61

Pool Classification	Amount Wagered	\$5.00 Wagers		\$2.00 Wagers	
		Number	Amount	Number	Amount
Daily Double	\$ 97,694.00			48,847	\$ 97,694.00
Quiniela	865,638.00			432,819	865,638.00
Quiniela Perfecta	304,376.00			152,188	304,376.00
Win	232,836.00	12,124	\$60,620.00	86,108	172,216.00
Place	151,275.00	5,019	25,095.00	63,090	126,180.00
Show	119,263.00	2,597	12,985.00	53,139	106,278.00
TOTAL	\$1,771,082.00	19,740	\$98,700.00	836,191	\$1,672,382.00

GANDY OPERATING COMPANY, INC.
Tampa, Florida

Officers

FRANK J. KRAEMER, *President*
630 Revere Road
Merion Station, Pennsylvania

BERNARD CHAUNCEY, *1st Vice-President and Secretary*
4455 N. Michigan Avenue
Miami Beach, Florida

BERNARD I. BINDER, *2nd Vice-President and Treasurer*
5235 Pine Tree Drive
Miami Beach, Florida

THOMAS C. KRAEMER, *Assistant Secretary*
630 Revere Road
Merion Station, Pennsylvania

Directors

J. LOUIS SUMNER
BERNARD I. BINDER

FRANK J. KRAEMER

BERNARD CHAUNCEY
CHARLES MAUSER

GANDY OPERATING COMPANY, INC.—(JAI-ALAI)

100 Playing Days—December 13, 1955 to April 10, 1956, Incl.—104 Performances

Pari-Mutuel Handle	\$3,442,620.00
Average Performance	33,102.98
Average Wager per Capita.....	20.04

Total Attendance	171,805
Average Paid Performance Attendance.....	1,652

TRACK REVENUE FROM P-M HANDLE

STATE REVENUE

3% of P-M Handle (Counties).....	\$ 103,278.60
2% of P-M-Handle (Old Age Assistance).....	68,852.40
50% of Breaks (Old Age Assistance).....	8,545.80
Admission Tax (Counties).....	18,232.60
	<u>\$ 198,909.40</u>
Occupational Licenses (Counties).....	770.50
Total State Revenue.....	<u>\$ 199,679.90</u>

12% of P-M Handle.....	\$ 413,114.40
50% of Breaks.....	8,545.20
Total Fronton Revenue (12.25%).....	<u>\$ 421,659.60</u>
Distributed to Public (82.50%).....	<u>\$2,840,283.60</u>
Percentage of Daily Double to Total Pool.....	5.98%
Percentage of Quiniela to Total Pool.....	64.45%
Percentage of Quiniela Perfecta to Total Pool.....	9.44%
Percentage of Breaks to Total Pool.....	0.50%

65

Pool Classification	Amount Wagered	\$5.00 Wagers		\$2.00 Wagers		\$1.00 Wagers	
		Number	Amount	Number	Amount	Number	Amount
Daily Double	\$ 206,024.00			103,012	\$ 206,024.00		
Quiniela	2,218,796.00			1,109,398	2,218,796.00		
Quiniela Perfecta	324,838.00			162,419	324,838.00		
Win	305,638.00	12,753	\$63,765.00	88,026	176,052.00	65,821	\$ 65,821.00
Place	218,047.00	4,890	24,450.00	63,888	127,776.00	65,821	65,821.00
Show	169,277.00	1,970	9,850.00	46,803	93,606.00	65,821	65,821.00
TOTAL	\$3,442,620.00	19,613	\$98,065.00	1,573,546	\$3,147,092.00	197,463	\$197,463.00

The Attendance of 834 and Pari-Mutuel Handle of \$17,643.00 for University of Tampa Day, Dec. 15, 1955 not included in above.
 The Attendance of 930 and Pari-Mutuel Handle of \$18,400.00 for Scholarship Fund Day, Dec. 16, 1955 not included in above.

MONRO OPERATING COMPANY, INC.
Dania, Florida

Officers

R. A. McANDREWS, *President*
9410 Collins Avenue
Miami Beach, Florida

H. L. MANUSHAW, *Treasurer*
515 Lincoln Street
Gary, Indiana

WILLIAM R. DAWES, *Secretary*
1200 San Remo Avenue
Coral Gables, Florida

Directors

CYRIL G. McANDREWS

R. A. McANDREWS
WILLIAM R. DAWES

H. L. MANUSHAW

MONRO OPERATING COMPANY, INC. — (JAI-ALAI)

98 Playing Days—December 13, 1955 to April 10, 1956, Incl.—98 Performances

Pari-Mutuel Handle	\$5,983,874.00
Average Performance	61,059.94
Average Wager per Capita	20.27

STATE REVENUE

3% of P-M Handle (Counties)	\$ 179,516.22
2% of P-M Handle (Old Age Assistance)	119,677.48
50% of Breaks (Old Age Assistance)	15,863.00
Admission Tax (Counties)	34,472.49
	<u>\$ 349,529.19</u>
Occupational Licenses (Counties)	1,270.75
Total State Revenue	<u>\$ 350,799.94</u>

Total Attendance	295,264
Average Paid Performance Attendance	3,013

TRACK REVENUE FROM P-M HANDLE

12% of P-M Handle	\$ 718,064.88
50% of Breaks	15,862.45
Total Fronton Revenue (12.26%)	<u>\$ 733,927.33</u>
Distributed to Public from P-M Handle (82.47%)	<u>\$4,934,889.97</u>
Distributed to Public from Minus Pool	3.73
Total Distributed to Public	<u>\$4,934,893.70</u>
Percentage of Daily Double to Total Pool	5.57%
Percentage of Quiniela to Total Pool	55.40%
Percentage of Quiniela Correcta to Total Pool	12.94%
Percentage of Breaks to Total Pool	0.53%

65

Pool Classification	Amount Wagered	\$50.00 Wagers		\$10.00 Wagers		\$5.00 Wagers		\$2.00 Wagers	
		Number	Amount	Number	Amount	Number	Amount	Number	Amount
Daily Double	\$ 333,260.00							166,630	\$ 333,260.00
Quiniela	3,314,842.00							1,657,421	3,314,842.00
Quiniela Correcta	774,252.00							387,126	774,252.00
Win	809,190.00	337	\$16,850.00	13,091	\$130,910.00	28,510	\$142,550.00	259,440	518,880.00
Place	448,876.00	91	4,550.00	5,118	51,180.00	13,530	67,650.00	162,748	325,496.00
Show	303,454.00	64	3,200.00	2,484	24,840.00	7,572	37,860.00	118,777	237,554.00
TOTAL	\$5,983,874.00	492	\$24,600.00	20,693	\$206,930.00	49,612	\$248,060.00	2,752,142	\$5,504,284.00

The Attendance of 1,970 and Pari-Mutuel Handle of \$43,396.00 for University of Miami Day, December 20, 1955 not included in above.
 The Attendance of 2,106 and Pari-Mutuel Handle of \$41,452.00 for Scholarship Fund Day, December 21, 1955 not included in above.

GULFSTREAM PARK RACING ASSOCIATION, INC.
Hallandale, Florida

Officers

JAMES DONN, *President*
1871 S. Miami Avenue
Miami, Florida

JAMES F. MACK, *Vice-President*
1204 N. 20th Avenue
Hollywood, Florida

DAVID S. WESTCOTT, *Vice-President*
2703 Jetton Street
Tampa, Florida

H. H. WOODSMALL, *Vice-President*
North Miami, Florida

MILO COFFRIN, *Secretary-Treasurer*
Coral Gables, Florida

Directors

JAMES DONN

JAMES F. MACK
DAVID S. WESTCOTT
EDWARD DONN
A. VERNON WEAVER
LILLIAN C. APPLETON

H. H. WOODSMALL
ALFRED A. SMITH
FRED C. FLIPSE
ARTHUR L. APPLETON
MAURICE A. HUTCHESON

JAMES DONN, JR.

GULFSTREAM PARK RACING ASSOCIATION, INC.

40 Racing Days—March 3, 1956 to April 21, 1956, Incl.—40 Performances

Pari-Mutuel Handle	\$53,825,682.00
Average Daily Handle	1,345,642.05
Average Wager per Capita (Based on Taxable Admissions)	109.96

STATE REVENUE

3% of P-M Handle (Counties)	\$ 1,614,770.46
5% of P-M Handle (Old Age Assistance)	2,691,284.10
Breaks (0.60%) (Old Age Assistance)	320,735.45
Admission Tax (Counties)	140,622.94
	<u>\$ 4,767,412.95</u>
Occupational Licenses (Counties)	3,310.25
Assumed Names (Counties)	110.00
Color Registrations (Counties)	79.00
Total State Revenue	<u>\$ 4,770,912.20</u>

Total Paid Attendance	489,522
Average Daily Paid Attendance	12,238

TRACK REVENUE FROM P-M HANDLE

7% of P-M Handle	\$ 3,767,797.74
Distributed to Public from P-M Handle (84.40%)	\$45,431,094.25
Distributed to Public from Track for Minus Pool	864.15
Total Distributed to Public	<u>\$45,431,958.40</u>
Percentage of Daily Double to Total Pool	9.37%
Percentage of \$100.00 Wagers to Total Pool	7.82%
Percentage of \$ 50.00 Wagers to Total Pool	20.17%
Percentage of \$ 10.00 Wagers to Total Pool	25.41%
Percentage of \$ 5.00 Wagers to Total Pool	15.41%
Percentage of \$ 2.00 Wagers to Total Pool	31.19%

Pool Classification	Amount Wagered	\$100.00 Wagers Number	\$100.00 Wagers Amount	\$50.00 Wagers Number	\$50.00 Wagers Amount	\$10.00 Wagers Number	\$10.00 Wagers Amount	\$5.00 Wagers Number	\$5.00 Wagers Amount	\$2.00 Wagers Number	\$2.00 Wagers Amount
Daily Double	\$ 5,045,632.00					158,047	\$ 1,580,470.00			1,732,581	\$ 3,465,162.00
Win	29,658,019.00	26,770	\$2,677,000.00	146,321	\$ 7,316,050.00	855,810	8,558,100.00	907,989	\$4,539,945.00	3,283,462	6,566,924.00
Place	10,851,109.00	8,055	805,500.00	40,985	2,049,250.00	219,570	2,195,700.00	426,457	2,132,285.00	1,834,187	3,668,374.00
Show	8,270,922.00	7,268	726,800.00	29,821	1,491,050.00	134,328	1,343,280.00	324,722	1,623,610.00	1,543,091	3,086,182.00
TOTAL	\$53,825,682.00	42,093	\$4,209,300.00	217,127	\$10,856,350.00	1,367,755	\$13,677,550.00	1,659,168	\$8,295,840.00	8,393,321	\$16,786,642.00

The Attendance of 8,807 and Pari-Mutuel Handle of \$928,646.00 for Scholarship Fund Day (Hialeah), April 19, 1956, not included in above.
 The Attendance of 8,774 and Pari-Mutuel Handle of \$934,048.00 for Scholarship Fund Day, April 20, 1956, not included in above.
 The Attendance of 14,922 and Pari-Mutuel Handle of \$1,473,794.00 for University of Miami Day, April 21, 1956, not included in above.

HIALEAH RACE COURSE, INC.

Hialeah, Florida

Officers

EUGENE MORI, *President*

Vineland, N. J.

W. H. DONOVAN, *Vice-President*

Gill Road

Haddonfield, N. J.

EUGENE E. MORI, *Treasurer*

Vineland, N. J.

EVERETT A. CLAY, *Secretary*

1424 Algardi

Coral Gables, Florida

DOROTHY C. COLE, *Assistant Secretary*

940 N. E. 72nd Street

Miami, Florida

Directors

EUGENE MORI

W. H. DONOVAN

RALPH W. CRUM

JAMES H. BRIGHT

DANIEL F. RICE

HIALEAH RACE COURSE, INC.

40 Racing Days—January 17, 1956 to March 2, 1956, Incl.—40 Performances

Pari-Mutuel Handle	\$71,743,684.00
Average Daily Handle.....	1,793,592.10
Average Wager per Capita	103.57
(Based on Taxable Admissions)	

STATE REVENUE

3% of P-M Handle (Counties)	\$ 2,152,310.52
5% of P-M Handle (Old Age Assistance).....	3,587,184.20
Breaks (0.65%) (Old Age Assistance).....	466,670.20
Admission Tax (Counties).....	171,737.97
	\$ 6,377,902.89
Occupational Licenses (Counties).....	9,878.00
Assumed Names (Counties).....	290.00
Color Registrations (Counties).....	143.00
Total State Revenue.....	\$ 6,388,213.89

Total Paid Attendance.....	692,680
Average Daily Paid Attendance.....	17,317

TRACK REVENUE FROM P-M HANDLE

7% of P-M Handle.....	\$ 5,022,057.88
Distributed to Public from P-M Handle (84.35%).....	\$60,515,461.20
Percentage of Daily Double to Total Pool.....	8.51%
Percentage of \$100.00 Wagers to Total Pool.....	14.42%
Percentage of \$ 50.00 Wagers to Total Pool.....	13.81%
Percentage of \$ 10.00 Wagers to Total Pool.....	26.36%
Percentage of \$ 5.00 Wagers to Total Pool.....	15.32%
Percentage of \$ 2.00 Wagers to Total Pool.....	30.09%

Pool Classification	Amount Wagered	\$100.00 Wagers Number	Wagers Amount	\$50.00 Wagers Number	Wagers Amount	\$10.00 Wagers Number	Wagers Amount	\$5.00 Wagers Number	Wagers Amount	\$2.00 Wagers Number	Wagers Amount
Daily Double	\$ 6,102,598.00	\$	\$			150,259	\$ 1,502,590.00	127,300	\$ 636,500.00	1,981,754	\$ 3,963,508.00
Win	39,652,000.00	67,876	6,787,600.00	125,329	6,266,450.00	1,217,240	12,172,400.00	1,158,404	5,792,020.00	4,316,765	8,633,530.00
Place	14,492,954.00	18,543	1,854,300.00	40,359	2,017,950.00	320,350	3,203,500.00	515,212	2,576,060.00	2,420,572	4,841,144.00
Show	11,496,132.00	17,030	1,703,000.00	32,418	1,620,900.00	203,277	2,032,770.00	397,142	1,985,710.00	2,076,876	4,153,752.00
TOTAL	\$71,743,684.00	103,449	\$10,344,900.00	198,106	\$9,905,300.00	1,891,126	\$18,911,260.00	2,198,058	\$10,990,290.00	10,795,967	\$21,591,934.00

SUNSHINE PARK RACING ASSOCIATION, INC.
Oldsmar, Florida

Officers

W. FRANK HOBBS, *President*
Tampa, Florida

JUSTIN V. O'CONOR, *Vice-President*
Chevy Chase, Maryland

C. C. VEGA, JR., *Secretary*
Tampa, Florida

SAMUEL C. LOMBARDO, *Vice-President*
Cleveland, Ohio

JOHN G. MASONI, *Treasurer*
Dania, Florida

Directors

JUSTIN V. O'CONOR

W. FRANK HOBBS

SAMUEL C. LOMBARDO

C. C. VEGA, JR.

JOHN G. MASONI

SUNSHINE PARK RACING ASSOCIATION, INC.

50 Racing Days—January 13, 1956 to March 13, 1956, Incl.—50 Performances

Pari-Mutuel Handle	\$9,043,665.00
Average Daily Handle	180,873.30
Average Wager per Capita (Based on Taxable Admissions)	69.70

Total Paid Attendance	129,750
Average Daily Paid Attendance	2,595

STATE REVENUE

(3% of P-M Handle)	
Flat Rate \$3,750.00 per day (Counties)	\$ 187,500.00
(5% of P-M Handle)	
Flat Rate \$1,250.00 per day (Old Age Assistance)	62,500.00
Breaks (0.72%) (Old Age Assistance)	64,766.60
Admission Tax (Counties)	17,688.62
	\$ 332,455.22
Occupational Licenses (Counties)	4,515.75
Assumed Names (Counties)	360.00
Color Registrations (Counties)	332.00
Total State Revenue	\$ 337,662.97

TRACK REVENUE FROM P-M HANDLE

Track Share of P-M Handle (12.24%)	
(After Flat Rate to State is Deducted)	\$1,106,549.75
Distributed to Public from P-M Handle (84.28%)	\$7,622,348.65
Percentage of Daily Double to Total Pool	7.59%
Percentage of \$50.00 Wagers to Total Pool	7.04%
Percentage of \$10.00 Wagers to Total Pool	27.43%
Percentage of \$ 5.00 Wagers to Total Pool	18.47%
Percentage of \$ 2.00 Wagers to Total Pool	47.06%

71

Pool Classification	Amount Wagered	\$50.00 Wagers Number	Wagers Amount	\$10.00 Wagers Number	Wagers Amount	\$5.00 Wagers Number	Wagers Amount	\$2.00 Wagers Number	Wagers Amount
Daily Double	\$ 695,576.00							347,788	\$ 695,576.00
Win	4,404,676.00	7,053	\$352,650.00	148,422	\$1,484,220.00	190,222	\$ 951,110.00	808,348	1,616,696.00
Place	2,249,153.00	2,960	148,000.00	62,796	627,960.00	89,159	445,795.00	513,699	1,027,398.00
Show	1,694,260.00	2,726	136,300.00	36,841	368,410.00	54,626	273,130.00	458,210	916,420.00
TOTAL	\$9,043,665.00	12,739	\$636,950.00	248,059	\$2,480,590.00	334,007	\$1,670,035.00	2,128,045	\$4,256,090.00

The Attendance of 2,146 and Pari-Mutuel Handle of \$165,764.00 for Scholarship Fund Day, March 8, 1956, not included in above.
 The Attendance of 2,055 and Pari-Mutuel Handle of \$159,636.00 for University of Tampa Day, March 1, 1956, not included in above.

TROPICAL PARK, INC.
Coral Gables, Florida

Officers

SAUL SILBERMAN, *President*
4651 Manordene Road
Baltimore 29, Maryland

IRENE P. INGLE, *Vice-President and Secretary*
507 Glen Allen Drive
Baltimore, Maryland

RALPH DECHIARO, *Treasurer*
305 Somerset Road
Baltimore, Maryland

Directors

IRENE P. INGLE

A. HERMAN SISKIND

SAUL SILBERMAN

DAN B. RUSKIN

RALPH DECHIARO

TROPICAL PARK, INCORPORATED

40 Racing Days—November 28, 1955 to January 15, 1956, Incl.—40 Performances

Pari-Mutuel Handle	\$35,977,034.00
Average Daily Handle.....	899,425.85
Average Wager per Capita.....	115.02
(Based on Taxable Admissions)	

STATE REVENUE

3% of P-M Handle (Counties).....	\$ 1,079,311.02
5% of P-M Handle (Old Age Assistance).....	1,798,851.70
Breaks (0.63%) (Old Age Assistance).....	226,510.91
Admission Tax (Counties).....	71,151.62
	<u>\$ 3,175,825.25</u>
Occupational Licenses (Counties).....	19,502.75
Assumed Names (Counties).....	1,910.00
Color Registrations (Counties).....	877.00
Total State Revenue.....	<u>\$ 3,198,115.00</u>

Total Paid Attendance.....	312,791
Average Daily Paid Attendance	7,820

TRACK REVENUE FROM P-M HANDLE

7% of P-M Handle.....	\$ 2,518,392.38
Distributed to Public from P-M Handle (84.37%)	<u>\$30,353,967.99</u>
Distributed to Public from Track for Minus Pool	77.91
Total Distributed to Public.....	<u>\$30,354,045.90</u>

Percentage of Daily Double to Total Pool.....	<u>7.43%</u>
Percentage of \$100.00 Wagers to Total Pool.....	10.50%
Percentage of \$ 50.00 Wagers to Total Pool.....	17.56%
Percentage of \$ 10.00 Wagers to Total Pool.....	27.41%
Percentage of \$ 5.00 Wagers to Total Pool.....	16.72%
Percentage of \$ 2.00 Wagers to Total Pool.....	27.81%

Pool Classification	Amount Wagered	\$100.00 Wagers		\$50.00 Wagers		\$10.00 Wagers		\$5.00 Wagers		\$2.00 Wagers	
		Number	Amount	Number	Amount	Number	Amount	Number	Amount	Number	Amount
Daily Double.....	\$ 2,674,536.00					88,827	\$ 888,270.00			893,133	\$ 1,786,266.00
Win	20,599,434.00	26,685	\$2,668,500.00	83,385	\$4,169,250.00	621,841	6,218,410.00	672,890	\$3,364,450.00	2,089,412	4,178,824.00
Place	7,190,551.00	5,792	579,200.00	25,141	1,257,050.00	161,507	1,615,070.00	304,777	1,523,885.00	1,107,673	2,215,346.00
Show	5,512,513.00	5,301	530,100.00	17,819	890,950.00	113,839	1,138,390.00	225,555	1,127,775.00	912,649	1,825,298.00
TOTAL	\$35,977,034.00	37,778	\$3,777,800.00	126,345	\$6,317,250.00	986,014	\$9,860,140.00	1,203,222	\$6,016,110.00	5,002,867	\$10,005,734.00

The Attendance of 10,930 and Pari-Mutuel Handle of \$792,493.00 for University of Miami Day, November 28, 1955, not included in above.
 The Attendance of 6,495 and Pari-Mutuel Handle of \$575,256.00 for Scholarship Fund Day, November 30, 1955, not included in above.
 The Attendance of 6,305 and Pari-Mutuel Handle of \$538,083.00 for University of Miami Day for Hialeah, November 29, 1955, not included in above.

