

30th
Annual Report
of the
**FLORIDA STATE RACING
COMMISSION**

to the
HONORABLE FARRIS BRYANT
Governor of Florida

FOR THE FISCAL YEAR ENDING
June 30, 1961



ROBERT M. MORGAN, *Chairman*
J. W. ROOD, *Secretary*
JACK FIVEASH, *Member*
CARL G. ROSE, *Member*
JOHN A. TORODE, *Member*

F351.76s
W131

FLORIDA STATE LIBRARY

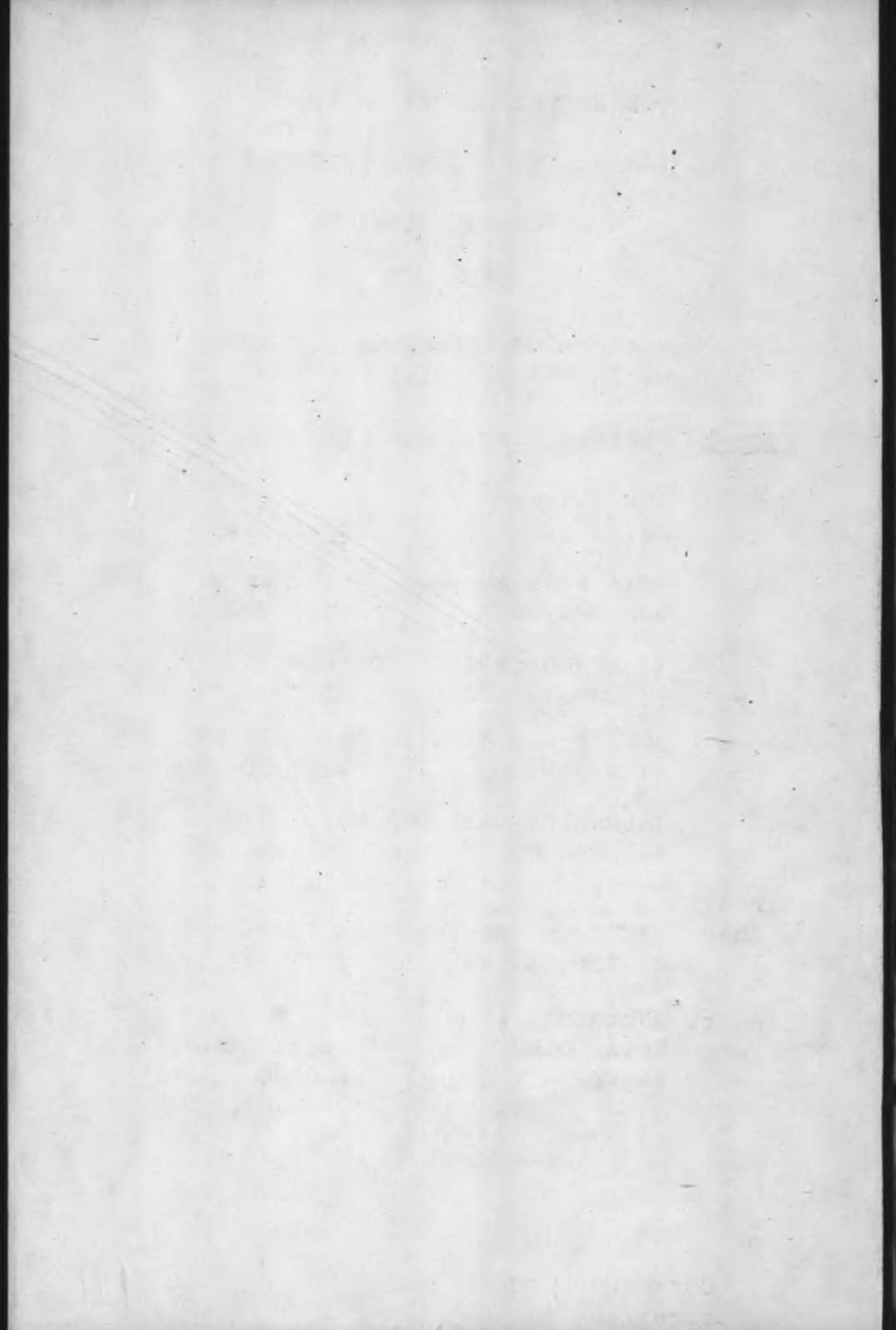
30th ANNUAL REPORT of the
 FLORIDA STATE RACING COMMISSION

Thru June 30, 1961

- - -

Re: Correction of typographical errors
 occurring as follows:

<u>Page #</u>	<u>Correct From</u>	<u>To</u>
✓ 4	(Gulfstream) April 20	April 24
✓ 27	(Biscayne average performance) \$21,899.20	\$218,992.02
✓ 32	(Jacksonville \$2. Quiniela) \$3,030,432.00	\$3,303,432.00
✓ 33	(Jefferson @ \$170. Per Race Allow.) \$170,950.00	\$107,950.00
✓ 51	(Sunshine Park breaks) \$57,504.85	\$57,504.65
Insert ✓ Sheet	(3% Comm.-Horses, Tropical) \$9,758,859.74	\$975,859.74
✓ Insert Sheet	(Wording) Total Other TRACKS	Total Other INCOME





GOVERNOR FARRIS BRYANT

Members of the
FLORIDA STATE RACING COMMISSION



ROBERT M. MORGAN, *Chairman*



J. W. ROOD, *Secretary*



JACK FIVEASH



CARL G. ROSE



JOHN A. TORODE



30th
Annual Report
of the
**FLORIDA STATE RACING
COMMISSION**

to the
HONORABLE FARRIS BRYANT
Governor of Florida

FOR THE FISCAL YEAR ENDING
June 30, 1961



ROBERT M. MORGAN, *Chairman*
J. W. ROOD, *Secretary*
JACK FIVEASH, *Member*
CARL G. ROSE, *Member*
JOHN A. TORODE, *Member*

TABLE OF CONTENTS

COMMENTARY.....	Page 3 thru 12
PAID ATTENDANCE, P/M HANDLE, STATE REVENUE Season 1931-32 thru 1960-61 (Exhibit A)	Page 13
STATEMENT OF RECEIPTS AND EXPENDITURES (Exhibit B).....	Page 14 thru 16
COMPARATIVE DATA (Exhibit C).....	Insert
SCHOLARSHIP FUND DAY RECEIPTS (Exhibit D).....	Page 17
ESCHEAT PARI-MUTUEL TICKETS RECEIPTS (Exhibit E).....	Page 18
RACING REVENUE COLLECTED BY GEOGRAPHIC LOCATION (Exhibit F)	Page 19
LIST OF OFFICERS AND DIRECTORS OF ASSOCIATIONS (Exhibit G)	Page 20 thru 25
ASSOCIATION STATISTICAL SUMMARIES:	
Dog Tracks.....	Page 26 thru 43
Jai-Alai Frontons	Page 44 thru 48
Horse Tracks	Page 49 thru 52

Thirtieth Annual Report

to the

GOVERNOR OF FLORIDA

from

THE FLORIDA STATE
RACING COMMISSION

JULY 1, 1960 THROUGH JUNE 30, 1961

July 1, 1961

His Excellency Farris Bryant
Governor of Florida
Tallahassee, Florida

Dear Sir:

In compliance with the requirements in Chapter 550.02, subsection 2, Florida Statutes, the Florida State Racing Commission submits this, its Thirtieth Annual Report for the period beginning July 1, 1960 and ending with the close of business on June 30, 1961.

Membership of the Commission from July 1, 1960 to January 3, 1961 consisted of the following named persons and the Congressional Districts from which they served:

Glenn Coryell, St. Petersburg	First District
J. Edwin Gay, Jacksonville	Second District
J. D. Johnson, Pensacola	Third District
John R. Ring, Miami	Fourth District
C. Sweet Smith, Jr., Cocoa	Fifth District

During the above stated time, John R. Ring served as Chairman and J. D. Johnson as Secretary. The Attorney for the Commission was George F. Gilleland of Miami.

On January 4, 1961, upon the expiration of the terms of office of the above named Commission members, the following named persons were appointed and the Congressional Districts from which they served were:

J. W. Rood, Bradenton	First District
John A. Torode, Starke	Second District
Jack Fiveash, Pensacola	Third District
Robert M. Morgan, Miami	Fourth District
Carl G. Rose, Ocala	Fifth District

At an organization meeting held in Tallahassee on January 4, the above named present members elected Robert M. Morgan and J. W. Wood to serve as Chairman and Secretary of the Commission respectively. Mr. Willard Ayres of Ocala served as Attorney during this period.

During the period July 1, 1960 through January 3, 1961, formal meetings of the Commission were held on the following dates at the indicated locations:

July 11, 1960	Miami
August 11, 1960	Miami
August 25, 1960	Jacksonville
September 16, 1960	Miami
November 26, 1960	Miami
December 19, 1960	Miami

During the period from January 4, 1961 through June 30, 1961, formal meetings were held by the Commission on the following dates and at the indicated locations:

January 4, 1961	Tallahassee
January 11, 1961	Miami
January 16, 1961	Miami
January 17, 1961	Hialeah
February 4, 1961	Miami
February 24, 1961	Miami
March 17, 1961	Miami
March 31, 1961	Miami
May 10, 1961	Tallahassee

RACING DATES

The Commission assigned Racing Dates for the 1960-1961 season to the various permit holders as follows:

(Listed in order of opening and including scholarship and charity days.)

WINTER RACING

HORSE TRACKS

Tropical Park, Inc., Coral Gables

November 24, 1960 (Closed November 25)

November 26, 1960 (Closed November 28 & 29)

November 30, 1960 through January 16, 1961 (43 days)

Sunshine Park Racing Association, Inc., Oldsmar

January 13, 1961 through March 25, 1961

(Closed on Mondays) (52 days)

Hialeah Race Course, Inc., Hialeah

January 17, 1961 through March 3, 1961 (40 days)

Gulfstream Park Racing Association, Inc., Hallandale

March 4, 1961 through April 24, 1961

(Closed March 31, 1961) (43 days)

GREYHOUND TRACKS

Miami Beach Kennel Club, Inc., Miami Beach

July 1, 1960 through August 27, 1960 (50 nights)

Re-open: December 26, 1960 through April 11, 1961 (92 nights)

Orange Park Kennel Club, Inc., Orange Park
October 1, 1960 through November 26, 1960
Re-open: April 14, 1961 through June 3, 1961 (92 nights)

Associated Outdoor Clubs, Inc., Tampa
October 29, 1960 through February 14, 1961
(Closed December 24, 1960) (92 nights)

West Flagler Kennel Club, Inc., Miami
October 29, 1960 through February 13, 1961 (92 nights)

Sanford-Orlando Kennel Club, Inc., Longwood
December 17, 1960 through April 3, 1961 (92 nights)

Jacksonville Kennel Club, Inc., Jacksonville
December 26, 1960 through April 12, 1961
(Closed March 31, 1961 — Good Friday) (92 nights)

Key West Kennel Club, Inc., Key West
December 26, 1960 through April 8, 1961 (90 nights)

St. Petersburg Kennel Club, Inc., St. Petersburg
December 29, 1960 through April 15, 1961
(Closed March 31, 1961—Good Friday) (92 nights)

Bonita-Fort Myers Corporation, Bonita Springs
December 30, 1960 through April 15, 1961 (92 nights)

Palm Beach Kennel Club, Inc., West Palm Beach
January 2, 1961 through April 19, 1961
(Closed March 31, 1961 — Good Friday) (92 nights)

Broward County Kennel Club, Inc., Hollywood
January 21, 1961 through March 8, 1961
July 1, 1961 through August 30, 1961 (92 nights)

Sarasota Kennel Club, Inc., Sarasota
February 15, 1961 through June 1, 1961 (92 nights)

Biscayne Kennel Club, Inc., Miami
February 16, 1961 through June 2, 1961 (92 nights)

JAI-ALAI FRONTONS

The Fronton, Inc., West Palm Beach
December 3, 1960 through April 1, 1961
(Closed January 3, 1961) (102 nights)

Fronton Exhibition Company, Inc., Miami
December 9, 1960 through April 8, 1961
(Closed December 24, 1960 and December 31, 1960) (102 nights)

Gandy Operating Company, Inc., Tampa
December 10, 1960 through April 10, 1961
(Closed December 24, 1960 and March 31, 1961) (102 nights)

Monro Operating Company, Inc., Dania
December 12, 1960 through April 10, 1961
(Closed December 24, 1960) (102 nights)

SUMMER RACING

GREYHOUND TRACKS

Washington County Kennel Club, Inc., Ebro
May 19 through September 4, 1961
(Closed May 29, 1961) (102 nights)

Florida Greyhound Racing Association, Pensacola
May 26 through September 11, 1961
(Closed September 5, 1961) (102 nights)

Daytona Beach Kennel Club, Daytona Beach
June 16 through September 30, 1961 (102 nights)

Jefferson County Kennel Club, Monticello
June 23 through October 7, 1961 (102 nights)

JAI-ALAI FRONTONS

Volusia Jai-Alai, Inc., Daytona Beach
April 14 through May 31, 1961 (41 days Winter)
June 1 through August 10, 1961 (61 days Summer)

PERMIT APPLICATIONS

The Racing Commission acted on the following applications for Jai-Alai permits to conduct racing during the past year. These were filed during 1959-1960:

Law Corporation, Broward County
This application was denied by the Commission.

Florida East Coast Enterprises, Inc., Brevard County
This application was approved by the Commission but at a subsequent referendum held by the voters of Brevard County it was defeated.

No new applications were filed during the year in review.

ADMINISTRATION

Kenneth Noe, Jr., Director and his assistant Knox Eldredge, supervise the many and varied activities of the Racing Commission.

Irving Harrington, Sr., veteran Chief Auditor retired in June after eighteen years of faithful service. His assistant George D. Johnson, Jr., has replaced him as Comptroller and directs the activities of the Auditing department. Tom C. Parker heads the Investigation department and Elsie S. Bellows, Ph.D, supervises our fine laboratory. Arthur T. Potter, former F. B. I. agent, joined the Agency as the fiscal year came to a close as Security Director.

The records and statistics of all the racing activities in the State are kept under the supervision of the Auditing department in the Commission office located at 1350 N. W. 12th Avenue, Miami, Florida. This report contains but a small fraction of these records and any other data, too voluminous to be included in its entirety, will be gladly furnished upon request.

INVESTIGATIVE DIVISION

The first responsibility of the Investigative division is to promote and correlate the law enforcement program of the racing industry in this State. This program is designed with the best interest of racing and the safety of the public in mind. This division has worked very closely with law enforcement agencies in the interchange of information, records and ideas which has proven a great asset to the industry.

The Investigative division is vitally concerned with the enforcement of the commonly called "85%" law which requires at least 85% of the employees at each track to be bona-fide Florida residents and that 85% of the weekly payrolls be paid to them. This law assures Florida residents a fair proportion of the positions at the tracks.

This division is responsible for the fingerprinting and photographing of all officers, directors, association employees, Greyhound owners, trainers and their personnel, and in keeping in the Miami office a complete file of all fingerprints and photographs. During the past season 14,474 persons were issued occupational licenses. Of this number 2,225 were new employees who were fingerprinted. When these fingerprints were processed by the Federal Bureau of Investigation twelve (12) felony records were revealed. Under the Statutes of Florida, employment of the twelve persons with felony records was terminated.

This department, together with the various track police departments, was instrumental in the ejection of 278 bookmakers, touts and other undesirables during the 1960-61 racing season. In addition, numerous investigations were conducted by this division to resolve questions concerning allegations of drugging, improper practices and miscellaneous matters pertaining to racing.

The Investigative department has kept the Commission informed of the operations and general conditions at the various tracks, thus insuring that the public is being protected to the best of our ability.

LABORATORY

The Florida State Racing Commission Laboratory, the oldest in the United States, enjoys a top reputation among the racing laboratories of the world. Directed by Dr. Elsie S. Bellows, its function is the detection of micro-quantities of drugs in saliva and urine which might be employed to effect the performance of the racing horse and greyhound. In the search for significant drugs in the past year a total of 10,729 analyses were performed.

Of 3,453 analyses, one sample was positive for the stimulant amphetamine, often referred to as benzedrine.

Of 6,945 greyhound analyses, thirty-two were positive for the depressant phenobarbital, four for the diuretic theobromine and four for the muscle relaxant mephenesin.

Miscellaneous and experimental analyses totaling 331 included confiscated hypodermic needles and syringes, capsules, tablets, solutions, a drugged meat ball and bloods and urines collected from greyhounds administered drugs experimentally.

The laboratory also maintains a continuous research program of new drug isolation and identification technics, drug excretion and metabiolite studies and other pertinent aspects of drug detection.

SCOPE OF RACING

During the winter months, the State experienced a general business recession which was nationwide in scope. As a result "tourism" in the Miami area declined with an accompanying decrease in the pari-mutuel play and tax revenues at the horse tracks. Never-the-less, the Greyhound tracks and Jai-Alai Frontons, statewide, continued their phenomenal growth and produced nearly enough tax revenues to offset the horse track decrease. As a result, Florida experienced its second best year in our racing history being exceeded only by the 1960 season.

We are looking forward to a banner 1962 racing season as the general economic conditions are showing an upward trend. The importance of racing revenue to the tax structure of the State of Florida cannot be under-estimated for many worthwhile projects are solely dependent upon this revenue.

Each of the sixty-seven counties of the State received \$187,600.00 for the fiscal year, of which \$145,600.00 was apportioned under the old racing laws and \$42,000.00 came from the additional taxes enacted by the 1955 Legislature. In addition, the Old Age Assistance program received in excess of twelve and one-half million dollars from racing. Another beneficiary of racing revenues was our school system. Various exhibits of this report show in detail these distributions.

Although the sum of \$26,883,222.80 was collected by the Commission during the season in review, only 2.1 per cent was expended in controlling, directing, and supervising the operations and activities of the twenty-six licensees. The expenditures for the past year represented a saving of \$19,348.67 from the budget appropriation and this sum has been returned for distribution to the counties.

The mutuel handle and percentage of increase or decrease for each licensee was as follows:

HORSE TRACKS

	P/M Play		Days Operated		Percentage	
	1959-60	1960-61	1959-60	1960-61	Increase	Decrease
Gulfstream Park Racing Assoc., Inc.	\$ 53,695,335	\$ 49,454,315	40	40		7.9 %
Hialeah Race Course, Inc.	72,503,563	68,008,796	40	40		6.2
Ponce de Leon Trotting Assoc., Inc.	586,901	Did Not Operate	26	-0-		
Sunshine Park Racing Assoc., Inc.	9,558,731	9,222,946	50	50		3.5
Tropical Park, Inc.	33,651,182	32,528,658	40	40		3.3
	<u>\$169,995,712</u>	<u>\$159,214,715</u>				<u>6.3 %</u>

GREYHOUND TRACKS

Associated Outdoor Clubs, Inc.	\$ 9,763,258	\$ 10,073,076	90	90	3.2 %	
Biscayne Kennel Club, Inc.	21,974,611	19,709,282	90	90		10.3 %
Bonita-Ft. Myers Corporation	2,007,008	2,390,663	90	90	19.1	
Broward County Kennel Club, Inc.	15,920,071	8,620,402	90	40	Split Meet-Winter-Summer Season	
Daytona Beach Kennel Club, Inc.	11,683,873	9,084,727	89	77		22.2
Florida Greyhound Racing, Inc.	4,712,702	4,616,278	98	91		2.1
Jacksonville Kennel Club, Inc.	4,830,133	4,782,572	90	90		1.0
Jefferson County Kennel Club, Inc.	2,408,024	2,516,794	92	79	4.5	
Key West Kennel Club, Inc.	1,191,976	1,117,991	85	89		6.2
Miami Beach Kennel Club, Inc.	7,034,549	23,302,588	40	140	Split Meet-Winter-Summer Season	
Orange Park Kennel Club, Inc.	4,468,862	4,259,390	89	91		4.7
Palm Beach Kennel Club, Inc.	8,362,121	8,460,649	90	90	1.2	
St. Petersburg Kennel Club, Inc.	15,324,640	15,082,975	90	90		1.6
Sanford-Orlando Kennel Club, Inc.	7,924,768	8,309,207	90	90	4.9	
Sarasota Kennel Club, Inc.	6,745,394	7,854,167	90	90	16.4	
Washington County Kennel Club, Inc.	2,536,322	2,401,299	107	91		5.3
West Flagler Kennel Club, Inc.	22,549,082	22,062,594	90	90		2.2
	<u>\$149,437,394</u>	<u>\$154,644,654</u>			<u>3.5 %</u>	

JAI-ALAI FRONTONS

Fronton Exhibition Co., Inc.	\$ 10,209,984	\$ 10,033,690	100	100		1.7 %
Fronton, Inc.	3,098,061	3,054,020	100	100		1.4
Gandy Operating Co., Inc.	3,811,493	3,638,597	100	100		4.5
Monro Operating Co., Inc.	8,547,504	8,784,654	100	100	2.8	
Volusia Jai-Alai, Inc.	2,847,340	4,803,616	84	138	68.7	
	<u>\$ 28,514,382</u>	<u>\$ 30,314,577</u>			<u>6.3 %</u>	

TOTAL ALL TRACKS \$347,947,488 \$344,173,946

(These figures do not include Scholarship or Charity Days)

1.1 %

ABANDONED PARI-MUTUEL TICKETS

Pursuant to Chapter 550.164, Florida Statutes, it was declared by the Legislature that all abandoned pari-mutuel tickets over one year of age should escheat to the State for deposit in the Principal of the State School Fund and to be used for the support and maintenance of our public free schools. The escheatment period had formerly been established at two years but was changed during the 1959 Legislature session. Consequently, during the past fiscal year we have been collecting these payments under the two escheatment periods. A total of \$403,903.95 was received and Exhibit "E" of this report lists in detail the amounts remitted by the individual licensees. In the future, all payments will fall under the one year escheatment period and the expected tax revenue produced from this source will be approximately half of the sum collected during this past fiscal year.

SCHOLARSHIP FUND

Pursuant to Chapter 550.08, Florida Statutes, the Legislature authorized the various tracks and frontons to operate additional days of racing for the expressed purpose of creating and providing State scholarships for qualified applicants from the net profits derived therefrom. These scholarships are administered by the State Board of Control for Institutions of Higher Learning. A total of \$316,021.21 was deposited to this fund during the past fiscal year. Exhibit "D" of this report lists the amounts raised by the participating licensees for this worthy project.

CHARITY DAYS

Pursuant to Chapter 550.03, Florida Statutes, the Legislature authorized the various tracks and frontons to operate extra days of racing, wherein the profits would go to recognized charities and institutions of higher learning not already participating in a scholarship day. A total of \$519,589.94 was raised for these organizations with the Commission supervising the distribution of this sum as follows:

University of Miami	\$304,533.79
University of Tampa	11,395.80
Community Chest and United Fund	128,518.05
Miscellaneous schools and colleges	17,283.57
Miscellaneous local charities	57,858.73

NATIONAL CO-ORDINATION

Members of the Florida State Racing Commission are members of the National Association of State Racing Commissioners, an organization made up of Commissioners from all the various states having legalized pari-mutuel activities. Through the exchange of information and ideas, the National Association is of great benefit to each member Commission. Under an agreement of reciprocity each State recognizes rulings made by any other State Racing Board.

The 1961 convention was held in Toronto, Canada, where Florida was represented by Commissioner John A. Torode. Kenneth Noe, Jr., Knox Eldredge and A. T. Potter also attended.

The Association of Official Racing Chemists held their convention in conjunction with the National Association and Dr. Elsie S. Bellows attended.

LITIGATION

In the 1959 and 1960 reports mention was made of the case of Morris Wexler vs. John R. Ring, et al, as and constituting the Florida State Racing Commission, resulting from the Commission's action in denying a horse owner's license. The Circuit Court of Dade County, Florida, held in 1960 that there was competent evidence to support the Commission's action. The decision of the Circuit Court was appealed to the Third District Court of Appeal of Florida. On January 16, 1961 the Third District Court of Appeal rendered a decision holding that there was competent evidence to support the action of the Commission in denying an owner's license to Wexler. In this decision the Court of Appeal held that the Racing Commission was authorized to apply the provisions of Section 550.181 authorizing the denial of a permit by reason of a criminal conviction, bookmaking or association with bookmakers, or criminals, to owners and other persons who are licensed by the Commission. Wexler filed a petition for certiorari in the Supreme Court of Florida, and the Supreme Court denied certiorari on June 30, 1961, thus terminating this litigation which established the power of the Commission to apply the same rule of fitness to a licensee as is applied to a permittee under the provisions of 550.181, Florida Statutes.

There was no other litigation affecting the Florida State Racing Commission during the year ending June 30, 1961.

FLORIDA BREEDERS

The Florida Thoroughbred breeding industry not only produced an increasing number of registered foals during 1961 but also more outstanding performers.

Monies earned by Florida-breds again reached a new high in 1960 with a total of \$2,260,717.00. Races won increased to 725. The following figures illustrate the gains in both categories:

PURSES EARNED		WINS	
1960.....	\$2,260,117	1960.....	725
1955.....	859,899	1959.....	515
1950.....	285,455	1958.....	400
1945.....	11,650	1957.....	320
1939.....	675		

Among the most accomplished Florida-breds performing in 1960, along with their total money earnings by the end of June 1961, were nationally famous CARRY BACK (\$739,068), winner of the Flamingo, Florida Derby, Kentucky Derby and the Preakness States; INDIAN MAID (\$285,812); CONESTOGA (\$224,011); HEROSHOGALA (\$150,006); and GEECHEE LOU (\$140,263).

A further indication of the steady expansion of Thoroughbred breeding in Florida is illustrated by the number of operating farms shown in the following tabulation:

1960.....	82	1950.....	10
1955.....	27	1945.....	8

LEGISLATION

During the 1961 session of the Legislation, the Florida Statutes were amended to include the following provisions which affect racing:

- (1) Track audits certified by a certified public accountant must now be submitted on an annual fiscal year basis.
- (2) Greyhound Tracks, with the exception of those located in the area between the parallel of 28° North latitude and 30° North latitude and lying East of the meridian of 82° West longitude, may now conduct their meetings at any time during the calendar year.
- (3) A permit held by the Seminole Park and Fairgrounds, Inc., since 1956 was re-validated.
- (4) Each horse track is now required to run an average of one race per day in which Florida bred shall be given preference in the entries.
- (5) An act providing for Harness Racing in Broward County if approved by electors of Broward County.

CONCLUSION

We, the present members of the Florida State Racing Commission, express to you our appreciation for the trust and confidence which you have placed in us.

The Commission feels that the present racing laws need to be revised and would recommend that this be presented to the next Legislature for their consideration.

We accept the responsibility of administering the racing laws of this State in the pari-mutuel industry and assure you that we will always protect the public and the State's interest at all times and keep racing on the highest plane.

Respectfully,

Robert Morgan, Chairman
J. W. Rood, Secretary
Jack Fiveash, Member
Carl G. Rose, Member
John A. Torode, Member

EXHIBIT "A"

FLORIDA STATE RACING COMMISSION
PAID ATTENDANCE, PARI-MUTUEL HANDLE,
STATE REVENUE

SEASON 1931-1932 THRU SEASON 1960-1961

Season	Number of Racing Days	Total Attendance	Total Pari-Mutuel Handle	Total State Revenue
1931-1932	462	1,157,161	\$ 17,365,424.00	\$ 737,300.70
1932-1933	550	1,281,017	19,146,938.00	763,877.09
1933-1934	609	1,591,024	27,549,567.00	1,072,364.22
1934-1935	775	2,024,636	36,577,493.00	1,401,176.87
1935-1936	906	1,854,292	38,826,132.00	1,436,957.07
1936-1937	1,029	2,330,964	50,121,647.00	1,838,338.53
1937-1938	1,053	2,401,367	54,047,114.00	1,969,740.68
1938-1939	1,025	2,373,271	55,272,416.00	2,000,758.63
1939-1940	1,057	2,517,436	64,388,377.00	2,302,834.13
1940-1941	902	2,695,464	68,280,202.00	2,436,374.09
1941-1942	972	2,195,080	63,601,585.00	4,392,861.86
1942-1943	734	854,256	26,658,646.00	1,066,087.70
1943-1944	982	2,458,933	109,561,969.00	6,824,272.72
1944-1945	333	945,341	35,171,557.00	2,007,853.08
1945-1946	1,442	4,448,084	211,571,289.00	15,554,033.94
1946-1947	1,298	4,444,543	194,710,333.00	14,680,730.51
1947-1948	1,318	4,344,479	180,647,561.00	13,542,407.27
1948-1949	1,404	4,641,038	178,171,736.00	13,222,461.84
1949-1950	1,377	4,539,742	178,842,858.00	13,101,521.89
1950-1951	1,378	4,643,293	204,385,597.00	14,997,486.10
1951-1952	1,432	5,279,674	248,728,380.00	18,090,497.77
1952-1953	1,549	5,732,369	272,696,059.00	19,734,513.61
1953-1954	1,722	5,812,577	276,681,999.00	20,026,021.78
1954-1955	1,731	5,809,467	284,044,131.00	20,521,462.81
1955-1956	1,879	5,915,941	310,681,432.00	24,180,833.82
1956-1957	1,907	6,035,932	322,948,073.00	24,969,496.52
1957-1958	2,012	5,626,152	315,546,506.00	24,306,949.76
1958-1959	2,055	5,966,709	329,141,335.00	25,157,459.81
1959-1960	2,180	6,209,688	347,947,488.00	26,609,331.64
1960-1961	2,216	6,328,535	344,173,946.00	26,163,297.64
TOTALS	38,289	112,458,465	\$4,867,487,790.00	\$345,109,304.08

DISTRIBUTION OF STATE REVENUE:

To Counties	\$161,747,835.31
To Old Age Assistance	169,052,988.63
To State General Fund	5,479,162.95
Operating Expenses	8,492,026.15
Cash on Hand and in Transit as of June 30, 1961	337,291.04
TOTAL	\$345,109,304.08

*NOTE: These figures do not include Board of Control or Escheat Tickets Receipts.

EXHIBIT "B"
 FLORIDA STATE RACING COMMISSION
STATEMENT OF RECEIPTS AND EXPENDITURES
 JULY 1, 1960 TO JUNE 30, 1961 INCLUSIVE

RECEIPTS

STATE RACING COMMISSION FUND:

Admission Tax:

Dog Tracks _____	\$	387,480.42
Jai-Alai Frontons _____		151,995.83
Horse Tracks _____		385,133.26

TOTAL _____	\$	924,609.51
-------------	----	------------

Commissions on Pari-Mutuel Handle

Dog Tracks 3/17 of Net Commission _____	\$	4,044,772.92
Dog Tracks Flat Rate instead of 3/17 _____		30,750.00
Jai-Alai Frontons 3% _____		909,437.31
Horse Tracks 3% _____		4,499,753.07
Horse Track Flat Rate instead of 3% _____		187,500.00

TOTAL _____	\$	9,672,213.30
-------------	----	--------------

Licenses, Registrations and Miscellaneous:

Occupational Licenses _____	\$	83,453.00
Assumed Name Registrations _____		3,790.00
Color Registrations _____		1,549.00
Miscellaneous Receipts _____		524.60

TOTAL _____	\$	89,316.60
-------------	----	-----------

STATE RACING COMMISSION ADDITIONAL FUND:

Commissions on Pari-Mutuel Handle:

Dog Tracks 2/17 of Net Commission _____	\$	2,696,515.28
Dog Tracks 25% of Breakage _____		214,912.84

TOTAL _____	\$	2,911,428.12
-------------	----	--------------

TOTAL STATE RACING COMMISSION RECEIPTS		\$13,597,567.53
--	--	-----------------

OLD AGE ASSISTANCE FUND:

Commissions on Pari-Mutuel Handle:

Dog Tracks 2/17 of Net Commission _____	\$	2,696,515.28
Dog Tracks Flat Rate instead of 2/17 _____		20,500.00
Dog Tracks 75% of Breakage _____		644,763.33
Jai-Alai Frontons 2% _____		606,291.54
Jai-Alai Frontons 50% of Breakage _____		62,804.26
Horse Tracks 5% _____		7,499,588.45
Horse Tracks Flat Rate instead of 5% _____		62,500.00
Horse Tracks 100% of Breakage _____		971,517.25
Penalties _____		1,250.00

TOTAL OLD AGE ASSISTANCE RECEIPTS		\$12,565,730.11
-----------------------------------	--	-----------------

TOTAL RACING COMMISSION AND OLD AGE ASSISTANCE RECEIPTS		\$26,163,297.64
--	--	-----------------

TRUST FUNDS:

Racing Scholarship Fund—		
Board of Control (Exhibit "D")	\$	316,021.21
Principal State School Fund—		
Escheat Tickets (Exhibit "E")		403,903.95
TOTAL TRUST FUNDS	\$	719,925.16
TOTAL RACING SOURCE RECEIPTS		\$26,883,222.80

RELEASES:

Allotment from Deficiency Appropriation 8,000.00

TOTAL RECEIPTS FOR CURRENT SEASON \$26,891,222.80

Balance on Hand July 1, 1960 as follows:

State Racing Commission Accounts 6/30/60	\$	185,400.67	
Remittances in Transit to			
State Treasurer 6/30/60		10.00	
Remittance in Transit from			
Tracks 6/30/60		79,853.32	265,263.99

TOTAL AVAILABLE AND TO BE ACCOUNTED FOR \$27,156,486.79

EXPENDITURES**SALARIES:**

Commissioners	\$	13,799.93	
Commission Attorney		2,999.98	
General Office		67,198.88	
Laboratory	\$	25,109.60	109,108.39

TRACK SUPERVISION:

Dog Racing Associations	232,689.00		
Jai-Alai Frontons	64,926.00		
Horse Racing Associations	66,998.00	364,613.00	
TOTAL SALARIES		\$	473,721.39
Less: Salaries			
Payable 6/30/61		120.00	\$ 473,601.39

TRAVELING EXPENSES:

Commissioners	\$	8,951.58	
Commission Attorney		606.53	
Employees		11,612.87	
TOTAL TRAVELING EXPENSES	\$		21,170.98

MISCELLANEOUS LABORATORY EXPENSES:

Chemicals and Supplies	\$	3,372.45	
Freight, Express and Cartage		542.91	
Laundry		220.25	
Postage		700.00	
Printing and Binding		47.60	
Rental—Laboratory		7,728.00	
Repairs to Equipment		106.70	
Stationery and Office Supplies		91.76	
Telephone and Telegraph	\$	206.10	13,015.77

MISCELLANEOUS ADMINISTRATIVE EXPENSES:

Associated Dues _____	\$	600.00	
Bond Premiums _____		727.57	
Clipping Service _____		63.90	
Credit Information _____		128.15	
Fingerprint Registrations _____		839.75	
Freight, Express and Cartage _____		210.76	
Insurance—			
Workmen's Compensation _____		2,284.91	
Judge's Fees—			
Occupational Licenses _____		3,542.50	
Identification Photo Registrations _____		726.10	
Information and Evidence _____		250.00	
Legal Hearing, Court Reporting, etc. _____		836.50	
Notary Fees _____		18.25	
Other Contractual Services _____		63.92	
Postage _____		1,848.32	
Printing and Binding _____		5,066.19	
Professional Services _____		1,176.65	
Rental—Miami Office _____		7,700.00	
Rental—Equipment _____		526.92	
Repairs to Furn. & Equipment _____		2,685.26	
Stationery & Office Supplies _____		3,649.26	
Telephone & Telegraph _____		4,518.22	
Water _____		25.50	
Transfer to Merit System Council _____			\$ 37,488.63
Accounts Payable Balance _____			521.37
			5,079.05
			<hr/>
TOTAL MISCELLANEOUS EXPENSES			\$ 56,104.82

CAPITAL OUTLAY:

Laboratory Equipment _____	\$	8,075.71	
Office Furniture and Equipment _____		2,799.48	
			<hr/>
TOTAL CAPITAL OUTLAY _____			10,875.19
			<hr/>
TOTAL EXPENDED BY COMMISSION _____			\$ 561,752.38

DISTRIBUTION OF FUNDS AFTER COST OF OPERATION:

Regular Distribution to Counties _____	\$	9,755,200.00	
Additional Distribution to Counties _____		2,814,000.00	
Regular 3% Distribution to General Revenue _____		320,401.92	
Additional 3% Distribution to General Revenue _____		87,211.76	
To General Revenue for Old Age Assistance Fund _____		12,560,679.53	
To Board of Control for			
Racing Scholarship Fund _____		316,021.21	
To Principal of State School Fund			
from Escheated Tickets _____		403,903.95	
To Deficiency Appropriation—unused balance _____		25.00	\$26,257,443.37
			<hr/>
GRAND TOTAL EXPENDITURES _____			\$26,819,195.75
Balance on Hand—			
June 30, 1961 as follows:			
State Racing Commission Accounts 6/30/61	\$	242,062.33	
Remittances in Transit from Tracks 6/30/61		95,228.71	337,291.04
			<hr/>
TOTAL ACCOUNTED FOR _____			<u>\$27,156,486.79</u>

**CURRENT YEAR
1960-1961 SEASON**

**EXHIBIT "C"
FLORIDA STATE RACING COMMISSION
COMPARATIVE DATA**

Paid Attendance	Pari-Mutuel Handle	Tax on Attendance	Net Commission & Sliding Scale on P/M Handle 3/17	Net Commission & Sliding Scale on P/M Handle 2/17	2/17 of Net Com. on P/M Handle	Breaks 25%	Breaks 75%	TOTAL State Revenue	Track Allowance Up to \$170 Per Race	Net Track Com. & Sliding Scale 10/17	Fronton Breaks	Total Track Revenue From P/M Handle	Distributed to Public From P/M Handle	No. Racing Days	SOURCES OF RACING REVENUE	No. Racing Days	Paid Attendance
GREYHOUND RACING ASSOCIATIONS																	
SUMMER SEASON																	
223,350	\$ 9,084,727.00	22,995.70	\$ 240,171.81	\$ 160,114.54	\$ 160,114.54	\$ 12,646.83	\$ 37,941.92	\$ 633,985.34	\$ 183,430.00	\$ 800,572.70		\$ 984,002.70	\$ 7,489,734.66	77	Daytona Beach Kennel Club, Inc.	89	264,831
118,119	4,616,278.00	13,459.33	104,408.34	69,605.56	69,605.56	6,917.28	20,753.65	284,749.72	193,120.00	348,027.80		541,147.80	3,803,839.81	91	Florida Greyhound Racing, Inc.	98	120,751
55,766	2,516,794.00	5,657.59	39,548.10	26,365.40	22,985.40	3,791.09	11,374.59	109,722.17	112,677.70	226,278.38		338,956.08	2,073,773.34	79	Jefferson County Kennel Club, Inc.	92	57,466
64,825	2,401,299.00	6,482.50	33,089.58	22,059.72	16,099.72	3,704.65	11,115.14	92,551.31	68,000.00	268,971.81		336,971.81	1,978,258.38	91	Washington County Kennel Club, Inc.	107	75,251
462,060	\$ 18,619,098.00	\$ 48,595.12	\$ 417,217.83	\$ 278,145.22	\$ 268,805.22	\$ 27,059.85	\$ 81,185.30	\$ 1,121,008.54	\$ 557,227.70	\$ 1,643,850.69		\$ 2,201,078.39	\$ 15,345,606.19	338	TOTAL SUMMER SEASON	386	518,311
WINTER SEASON																	
201,324	\$ 10,073,076.00	\$ 20,909.31	\$ 269,642.28	\$ 179,761.52	\$ 179,761.52	\$ 12,710.54	\$ 38,133.23	\$ 700,918.40	\$ 184,450.00	\$ 898,807.60		\$ 1,083,257.60	\$ 8,309,809.31	90	Associated Outdoor Clubs, Inc.	90	206,471
449,697	19,709,282.00	47,050.40	563,048.46	375,365.64	375,365.64	26,839.38	80,519.41	1,468,188.93	159,970.00	1,876,828.20		2,036,798.20	16,251,345.27	90	Biscayne Kennel Club, Inc.	90	504,811
67,005	2,390,663.00	6,973.26	30,414.15	20,276.10	14,696.10	3,439.76	10,320.83	86,120.20	85,879.24	255,147.12		341,026.36	1,970,489.70	90	Bonita-Ft. Myers Corporation	90	67,741
229,941	8,620,402.00	25,092.86	246,162.06	164,108.04	164,108.04	11,989.88	35,970.28	647,431.16	70,550.00	820,540.20		891,090.20	7,106,973.50	40	Broward County Kennel Club, Inc.	90	413,821
103,393	4,782,572.00	10,339.30	113,957.16	75,971.44	75,971.44	6,253.11	18,760.74	301,253.19	167,280.00	379,857.20		547,137.20	3,944,520.91	90	Jacksonville Kennel Club, Inc.	90	103,630
37,048	1,117,991.00	3,712.03	8,130.00	5,420.00		1,945.07	5,836.75	25,043.85		176,508.47		176,508.47	920,150.71	89	Key West Kennel Club, Inc.	85	38,951
557,443	23,302,588.00	61,395.68	654,917.64	436,611.76	436,611.76	30,668.99	92,008.97	1,712,214.80	250,240.00	2,183,058.80		2,433,298.80	19,218,470.08	140	Miami Beach Kennel Club, Inc.	40	170,411
89,192	4,259,390.00	8,919.20	97,805.58	65,203.72	65,043.72	5,446.52	16,340.95	258,759.69	167,110.00	328,933.28		496,043.28	3,513,506.23	91	Orange Park Kennel Club, Inc.	89	90,011
187,332	8,460,649.00	18,983.09	225,859.47	150,572.98	150,572.98	11,534.24	34,604.03	592,126.79	158,440.00	752,864.90		911,304.90	6,976,200.40	90	Palm Beach Kennel Club, Inc.	90	176,871
176,780	8,309,207.00	18,743.37	207,516.21	138,344.14	138,344.14	11,745.53	35,238.49	549,931.88	236,640.00	691,720.70		928,360.70	6,849,657.79	90	Sanford-Orlando Kennel Club, Inc.	90	168,811
200,073	7,854,167.00	20,724.51	193,865.01	129,243.34	129,243.34	11,085.57	33,258.82	517,420.59	236,640.00	646,216.70		882,856.70	6,474,614.22	90	Sarasota Kennel Club, Inc.	90	141,551
422,330	15,082,975.00	43,307.10	413,159.25	275,439.50	275,439.50	21,872.71	65,619.67	1,094,837.73	222,870.00	1,377,197.50		1,600,067.50	12,431,376.87	90	St. Petersburg Kennel Club, Inc.	90	424,011
506,802	22,062,594.00	52,735.19	633,827.82	422,551.88	422,551.88	32,320.32	96,961.74	1,660,948.83	158,950.00	2,112,759.40		2,271,709.40	18,182,670.96	90	West Flagler Kennel Club, Inc.	90	524,831
3,228,360	\$ 136,025,556.00	\$ 338,885.30	\$ 3,658,305.09	\$ 2,438,870.06	\$ 2,427,710.06	\$ 187,851.62	\$ 563,573.91	\$ 1,615,196.04	\$ 2,099,019.24	\$ 12,500,440.07		\$ 14,599,459.31	\$ 112,149,785.95	1170	TOTAL WINTER SEASON	1,114	3,031,971
3,690,420	\$ 154,644,654.00	\$ 387,480.42	\$ 4,075,522.92	\$ 2,717,015.28	\$ 2,696,515.28	\$ 214,911.47	\$ 644,759.21	\$ 10,736,204.58	\$ 2,656,246.94	\$ 14,144,290.76		\$ 16,800,537.70	\$ 127,495,392.14	1508	TOTAL GREYHOUND TRACKS Summer and Winter Seasons	1,500	3,550,281
HARNESS RACING ASSOCIATIONS																	
— DID NOT OPERATE —																	
— Ponce de Leon Trotting Assn., Inc. — 26 15,185																	
JAI-ALAI FRONTONS																	
341,721	\$ 10,033,690.00	\$ 43,396.87	\$ 301,010.70	200,673.80		\$ 18,428.04	\$ 563,509.41		\$ 1,204,042.80	\$ 18,427.00	\$ 1,222,469.80	\$ 8,291,107.66	100	Fronton Exhibition Co., Inc.	100	344,091	
145,815	3,054,020.00	14,581.50	91,620.60	61,080.40		6,398.43	173,680.93		366,482.40	6,395.80	372,878.20	2,522,042.37	100	The Fronton, Inc.	100	140,301	
160,664	3,638,597.00	18,275.62	109,157.91	72,771.94		8,051.48	208,256.95		436,631.64	8,050.93	444,682.57	3,003,933.10	100	Gandy Operating Co., Inc.	100	168,351	
356,582	8,784,654.00	56,624.36	263,539.62	175,693.08		20,119.17	515,976.23		1,054,158.48	20,116.27	1,074,274.75	7,251,027.38	100	Monro Operating Co.	100	353,931	
184,396	4,803,616.00	19,117.48	144,108.48	96,072.32		9,807.14	269,105.42		576,433.92	9,791.78	586,225.70	3,967,402.36	138	Volusia Jai-Alai, Inc. (Summer)	84	133,481	
1,189,178	\$ 30,314,577.00	\$ 151,995.83	\$ 909,437.31	\$ 606,291.54		\$ 62,804.26	\$ 1,730,528.94		\$ 3,637,749.24	\$ 62,781.78	\$ 3,700,531.02	\$ 25,035,512.87	538	TOTAL JAI-ALAI FRONTONS	484	1,140,171	
HORSE RACING ASSOCIATIONS																	
456,172	\$ 49,454,315.00	\$ 130,261.22	\$ 1,483,629.45	\$ 2,472,715.75		\$ 302,969.00	\$ 4,389,575.42		\$ 3,461,802.05		\$ 3,461,802.05	\$ 41,733,198.75	40	Gulfstream Park Racing Assn., Inc.	40	454,191	
605,660	68,008,796.00	160,607.08	2,040,263.88	3,400,439.80		\$ 410,756.75	6,012,067.51		4,760,615.72		4,760,615.72	57,396,719.85	40	Hialeah Race Course, Inc.	40	646,031	
124,294	9,222,946.00	21,034.61	187,500.00	62,500.00		57,504.65	328,539.26		1,133,441.90		1,133,441.90	7,781,999.45	50	Sunshine Park Racing Assn., Inc.	50	126,191	
262,811	32,528,658.00	73,230.35	975,859.74	1,626,432.90		200,286.85	2,875,809.84		2,277,006.06		2,277,006.06	27,449,072.45	40	Tropical Park, Inc.	40	277,611	
1,448,937	\$ 159,214,715.00	\$ 385,133.26	\$ 4,687,253.07	\$ 7,562,088.45		\$ 971,517.25	\$ 13,605,992.03		\$ 11,632,865.73		\$ 11,632,865.73	\$ 134,360,990.50	170	TOTAL HORSE TRACKS	170	1,504,031	
6,328,535	\$ 344,173,946.00	\$ 924,609.51	\$ 9,672,213.30	\$ 10,885,395.27	\$ 2,696,515.28	\$ 214,911.47	\$ 1,679,080.72	\$ 26,072,725.55	\$ 2,656,246.94	\$ 29,414,905.73	\$ 62,781.78	\$ 32,133,934.45	\$ 286,891,895.51	2216	TOTAL ALL TRACKS	2,180	6,209,681

975,859.74

OTHER INCOME:

Occupational Licenses	\$ 83,453.00
Assumed Names Registrations	3,790.00
Color Registrations	1,549.00
Miscellaneous Income	1,780.09
TOTAL OTHER INCOME	\$ 90,572.09
GRAND TOTAL RECEIPTS	\$ 26,163,297.64

In addition to total receipts see Exhibits "D" and "E" for other funds collected.

EXHIBIT "C"
FLORIDA STATE RACING COMMISSION
COMPARATIVE DATA

PREVIOUS YEAR
1959-1960 SEASON

Fronton Breaks	Total Track Revenue From P/M Handle	Distributed to Public From P/M Handle	No. Racing Days	SOURCES OF RACING REVENUE	No. Racing Days	Paid Attendance	Pari-Mutuel Handle	Tax on Attendance	Net Commission & Sliding Scale on P/M Handle 3/17	Net Commission & Sliding Scale on P/M Handle 2/17	2/17 of Net Comm. on P/M Handle	Breaks 25%	Breaks 75%	TOTAL State Revenue	Track Allowance Up to \$170 Per Race	Net Track Comm. & Sliding Scale 10/17	Fronton Breaks	Total Track Revenue From P/M Handle	Distributed to Public From P/M Handle
GREYHOUND RACING ASSOCIATIONS																			
SUMMER SEASON																			
	\$ 984,002.70	\$ 7,489,734.66	77	Daytona Beach Kennel Club, Inc.	89	264,837	\$ 11,683,873.00	\$ 27,249.32	\$ 309,206.19	\$ 206,137.46	\$ 206,137.46	\$ 16,686.81	\$ 50,062.47	\$ 815,479.71	\$ 234,090.00	\$ 1,030,687.30		\$ 1,264,777.30	\$ 9,630,865.31
	541,147.80	3,803,839.81	91	Florida Greyhound Racing, Inc.	98	120,755	4,712,702.00	12,579.26	104,961.06	69,974.04	69,974.04	7,008.02	21,025.70	285,522.12	206,380.00	349,870.20		556,250.20	3,883,508.94
	338,956.08	2,073,773.34	79	Jefferson County Kennel Club, Inc.	92	57,460	2,408,024.00	5,796.87	32,666.85	21,777.90	16,517.90	3,856.11	11,569.68	92,185.31	71,592.61	266,808.82		338,401.43	1,983,234.13
	336,971.81	1,978,258.38	91	Washington County Kennel Club, Inc.	107	75,258	2,536,322.00	7,525.80	31,089.21	20,726.14	14,826.14	4,109.86	12,331.47	90,608.62	64,898.69	299,634.56		364,533.25	2,088,705.93
	\$ 2,201,078.39	\$ 15,345,606.19	338	TOTAL SUMMER SEASON	386	518,310	\$ 21,340,921.00	\$ 53,151.25	\$ 477,923.31	\$ 318,615.54	\$ 307,455.54	\$ 31,660.80	\$ 94,989.32	\$ 1,283,795.76	\$ 576,961.30	\$ 1,947,000.88		\$ 2,523,962.18	\$ 17,586,314.31
WINTER SEASON																			
	\$ 1,083,257.60	\$ 8,309,809.31	90	Associated Outdoor Clubs, Inc.	90	206,473	\$ 9,763,258.00	\$ 21,027.54	\$ 260,107.74	\$ 173,405.16	\$ 173,405.16	\$ 12,237.55	\$ 36,714.32	\$ 676,897.47	\$ 185,810.00	\$ 867,025.80		\$ 1,052,835.80	\$ 8,054,552.27
	2,036,798.20	16,251,345.27	90	Biscayne Kennel Club, Inc.	90	504,817	21,974,611.00	52,977.48	631,278.33	420,852.22	420,852.22	35,592.50	106,778.97	1,668,331.72	158,440.00	2,104,261.10		2,262,701.10	18,096,555.66
	341,026.36	1,970,489.70	90	Bonita-Ft. Myers Corporation	90	67,749	2,007,008.00	6,868.93	19,225.17	12,816.78	7,456.78	3,342.77	10,029.94	59,740.37	60,581.37	241,111.26		301,692.63	1,652,443.93
	891,090.20	7,106,973.50	40	Broward County Kennel Club, Inc.	90	413,825	15,920,071.00	44,846.22	449,642.13	299,761.42	299,761.42	23,588.58	70,767.09	1,188,366.86	158,440.00	1,498,807.10		1,657,247.10	13,119,303.26
	547,137.20	3,944,520.91	90	Jacksonville Kennel Club, Inc.	90	103,630	4,830,133.00	10,363.00	115,743.99	77,162.66	77,162.66	6,215.48	18,648.13	305,295.92	165,240.00	385,813.30		551,053.30	3,984,146.78
	176,508.47	920,150.71	89	Key West Kennel Club, Inc.	85	38,956	1,191,976.00	3,895.60	8,062.08	5,374.72	314.72	2,049.43	6,149.47	25,846.02	1,870.00	187,014.40		188,884.40	981,141.18
	2,433,298.80	19,218,470.08	140	Miami Beach Kennel Club, Inc.	40	170,415	7,034,549.00	18,800.52	198,556.47	132,370.98	132,370.98	8,542.85	25,629.22	516,271.02	70,720.00	661,854.90		732,574.90	5,804,503.60
	496,043.28	3,513,506.23	91	Orange Park Kennel Club, Inc.	89	90,018	4,468,862.00	9,001.80	105,505.86	70,337.24	70,337.24	5,637.96	16,915.33	277,735.43	161,840.00	351,686.20		513,526.20	3,686,602.17
	911,304.90	6,976,200.40	90	Palm Beach Kennel Club, Inc.	90	176,875	8,362,121.00	17,914.93	222,873.63	148,582.42	148,582.42	12,055.24	36,167.07	586,175.71	158,610.00	742,912.10		901,522.10	6,892,338.12
	928,360.70	6,849,657.79	90	Sanford-Orlando Kennel Club, Inc.	90	168,810	7,924,768.00	17,874.31	196,583.04	131,055.36	131,055.36	11,802.37	35,409.20	523,779.64	233,240.00	655,276.80		888,516.80	6,530,345.87
	882,856.70	6,474,614.22	90	Sarasota Kennel Club, Inc.	90	141,559	6,745,394.00	14,584.40	162,878.10	108,585.40	108,585.40	9,999.20	29,999.35	434,571.85	221,340.00	545,388.08		766,728.08	5,558,678.47
	1,600,067.50	12,431,376.87	90	St. Petersburg Kennel Club, Inc.	90	424,019	15,324,640.00	43,518.42	422,929.20	281,952.80	281,952.80	21,709.88	65,131.56	1,117,194.66	208,590.00	1,409,764.00		1,618,354.00	12,632,609.76
	2,271,709.40	18,182,670.96	90	West Flagler Kennel Club, Inc.	90	524,832	22,549,082.00	54,806.84	648,392.46	432,261.64	432,261.64	32,513.16	97,540.36	1,697,776.10	159,120.00	2,161,308.20		2,320,428.20	18,585,684.54
	\$14,599,459.31	\$112,149,785.95	1170	TOTAL WINTER SEASON	1,114	3,031,978	\$128,096,473.00	\$316,479.99	\$3,441,778.20	\$ 2,294,518.80	\$2,284,038.80	\$185,286.97	\$ 555,880.01	\$ 9,077,982.77	\$1,943,841.37	\$11,812,223.24		\$13,756,064.61	\$105,578,905.61
TOTAL GREYHOUND TRACKS																			
	\$16,800,537.70	\$127,495,392.14	1508	Summer and Winter Seasons	1,500	3,550,288	\$149,437,394.00	\$369,631.24	\$3,919,701.51	\$ 2,613,134.34	\$2,591,494.34	\$216,947.77	\$ 650,869.33	\$10,361,778.53	\$2,520,802.67	\$13,759,224.12		\$16,280,026.79	\$123,165,219.92
HARNESS RACING ASSOCIATIONS																			
DID	NOT	OPERATE	—	Ponce de Leon Trotting Assn., Inc.	26	15,185	\$ 586,901.00	\$ 2,055.04	\$ 6,800.97	\$ 4,533.98	\$ 2,753.98	\$ 1,455.20	\$ 4,366.07	\$ 21,965.24	\$ 10,647.78	\$ 75,036.46		\$ 85,684.24	\$ 481,306.56
JAI-ALAI FRONTONS																			
50%				Fronton Exhibition Co., Inc.	100	344,099	\$ 10,209,984.00	\$ 42,290.32	\$ 306,299.52	\$ 204,199.68			\$ 18,800.30	571,589.82		\$ 1,225,198.08	\$18,794.91	\$ 1,243,992.99	\$ 8,436,691.51
50%				The Fronton, Inc.	100	140,301	3,098,061.00	14,030.10	92,941.83	61,961.22			6,981.81	175,914.96		371,767.32	6,962.81	378,730.13	2,557,446.01
50%				Gandy Operating Co., Inc.	100	168,354	3,811,493.00	18,398.80	114,344.79	76,229.86			8,559.67	217,533.12		457,379.16	8,557.96	465,937.12	3,146,421.56
50%				Monro Operating Co.	100	353,938	8,547,504.00	52,719.97	256,425.12	170,950.08			17,603.72	497,698.89		1,025,700.48	17,602.16	1,043,302.64	7,059,222.44
50%				Volusia Jai-Alai, Inc. (Summer)	84	133,485	2,847,340.00	13,739.58	85,420.20	56,946.80			6,501.49	162,608.07		341,680.80	6,484.85	348,165.65	2,350,305.86
	\$ 781.78	\$ 3,700,531.02	\$ 25,035,512.87	TOTAL JAI-ALAI FRONTONS	484	1,140,177	\$ 28,514,382.00	\$141,178.77	\$ 855,431.46	\$ 570,287.64			\$ 58,446.99	\$ 1,625,344.86		\$ 3,421,725.84	\$58,402.69	\$ 3,480,128.53	\$ 23,550,087.38
HORSE RACING ASSOCIATIONS																			
	\$ 3,461,802.05	\$ 41,733,198.75	40	Gulfstream Park Racing Assn., Inc.	40	454,191	\$ 53,695,335.00	\$127,909.78	\$1,610,860.05	\$ 2,684,766.75			\$ 333,973.50	\$ 4,757,510.08		\$ 3,758,673.45		\$ 3,758,673.45	\$ 45,307,061.25
	4,760,615.72	57,396,719.85	40	Hialeah Race Course, Inc.	40	646,035	72,503,563.00	169,182.18	2,175,106.89	3,625,178.15			455,568.95	6,425,036.17		5,075,249.41		5,075,249.41	61,172,459.60
	1,133,441.90	7,781,999.45	50	Sunshine Park Racing Assn., Inc.	50	126,196	9,558,731.00	20,965.05	187,500.00	62,500.00			65,886.20	336,851.25		1,183,809.65		1,183,809.65	8,059,035.15
	2,277,006.06	27,449,072.45	40	Tropical Park, Inc.	40	277,616	33,651,182.00	75,980.64	1,009,535.46	1,682,559.10			217,132.00	2,985,207.20		2,355,582.74		2,355,582.74	28,386,372.70
	\$11,632,865.73	\$134,360,990.50	170	TOTAL HORSE TRACKS	170	1,504,038	\$169,408,811.00	\$394,037.65	\$4,983,002.40	\$ 8,055,004.00			\$1,072,560.65	\$14,504,604.70		\$12,373,315.25		\$12,373,315.25	\$142,924,928.70
	\$781.78	\$32,133,934.45	\$286,891,895.51	TOTAL ALL TRACKS	2,180	6,209,688	\$347,947,488.00	\$906,902.70	\$9,764,936.34	\$11,242,959.96	\$2,594,248.32	\$218,402.97	\$1,786,243.04	\$26,513,693.33	\$2,531,450.45	\$29,629,301.67	\$58,402.69	\$32,219,154.81	\$290,121,542.56

al receipts see
"E" for other

OTHER INCOME:
Occupational Licenses \$ 87,230.25
Assumed Names Registrations 4,020.00
Color Registrations 1,598.00
Miscellaneous Income 2,790.06
TOTAL OTHER INCOME \$ 95,638.31
GRAND TOTAL RECEIPTS \$26,609,331.64

In addition to total receipts see
Exhibits "D" and "E" for other
funds collected.

17389
11-1301

No.	Date	Description	Amount	Balance	Total
1	1911
2	1911
3	1911
4	1911
5	1911
6	1911
7	1911
8	1911
9	1911
10	1911
11	1911
12	1911
13	1911
14	1911
15	1911
16	1911
17	1911
18	1911
19	1911
20	1911
21	1911
22	1911
23	1911
24	1911
25	1911
26	1911
27	1911
28	1911
29	1911
30	1911
31	1911
32	1911
33	1911
34	1911
35	1911
36	1911
37	1911
38	1911
39	1911
40	1911
41	1911
42	1911
43	1911
44	1911
45	1911
46	1911
47	1911
48	1911
49	1911
50	1911
51	1911
52	1911
53	1911
54	1911
55	1911
56	1911
57	1911
58	1911
59	1911
60	1911
61	1911
62	1911
63	1911
64	1911
65	1911
66	1911
67	1911
68	1911
69	1911
70	1911
71	1911
72	1911
73	1911
74	1911
75	1911
76	1911
77	1911
78	1911
79	1911
80	1911
81	1911
82	1911
83	1911
84	1911
85	1911
86	1911
87	1911
88	1911
89	1911
90	1911
91	1911
92	1911
93	1911
94	1911
95	1911
96	1911
97	1911
98	1911
99	1911
100	1911

EXHIBIT "D"

FLORIDA STATE RACING COMMISSION
 FROM EXTRA DAYS OF RACING FOR
 SCHOLARSHIP FUND — BOARD OF CONTROL

Associated Outdoor Clubs, Inc.....	\$ 6,532.49
Biscayne Kennel Club Inc.....	18,411.06
Bonita-Ft.Myers Corporation	285.62
Daytona Beach Kennel Club, Inc.....	8,561.52
Florida Greyhound Racing, Inc.....	2,714.22
Fronton Exhibition Co., Inc.....	5,768.62
Fronton, Inc.	1,120.99
Gandy Operating Co., Inc.	902.29
Gulfstream Park Racing Association, Inc.....	75,282.06
Jefferson County Kennel Club, Inc.....	1,559.87
Miami Beach Kennel Club, Inc.....	7,097.20
Monro Operating Co., Inc.....	3,408.23
Orange Park Kennel Club, Inc.....	3,519.93
Palm Beach Kennel Club, Inc.....	5,880.20
St. Petersburg Kennel Club, Inc.....	6,157.21
Sanford-Orlando Kennel Club, Inc.....	3,774.45
Sarasota Kennel Club, Inc.....	4,235.57
Sunshine Park Racing Association, Inc.....	5,656.82
Tropical Park, Inc.	71,700.68
Tropical Park, Inc. (for Hialeah).....	59,083.42
Volusia Jai-Alai, Inc.....	1,018.00
Washington County Kennel Club, Inc.....	476.87
West Flagler Kennel Club, Inc.....	22,873.89
TOTAL RECEIPTS HELD FOR SCHOLARSHIP FUND.....	<u><u>\$316,021.21</u></u>

EXHIBIT "E"
FLORIDA STATE RACING COMMISSION
FOR PRINCIPAL STATE SCHOOL FUND FROM ESCHEATED PARI-MUTUEL TICKETS

	From 1957-58 Season \$	From 1958-59 Season \$	From 1959-60 Season \$	GRAND TOTAL \$
Associated Outdoor Clubs, Inc.....			9,887.90	
Biscayne Kennel Club, Inc.....		11,351.10	16,893.40	
Bonita-Ft. Myers Corporation.....			2,954.60	
Broward County Kennel Club, Inc.....		14,539.30		
Daytona Beach Kennel Club, Inc.....		13,526.60		
Florida Greyhound Racing, Inc.....		6,205.10		
Fronton Exhibition Co., Inc.....		9,769.40	10,420.80	
Fronton, Inc.....			4,540.00	
Gandy Operating Co., Inc.....	11.10	2,043.60	2,092.70	
Gulfstream Park Racing Assoc., Inc.....		30,003.00	28,371.55	
Hialeah Race Course, Inc.....			37,988.30	
Jacksonville Kennel Club, Inc.....		4,894.80	4,125.70	
Jefferson County Kennel Club, Inc.....		3,864.90		
Key West Kennel Club, Inc.....		1,027.00		
Miami Beach Kennel Club, Inc.....		13,229.80	16,122.10	
Monro Operating Co., Inc.....		9,389.00	10,552.30	
Orange Park Kennel Club, Inc.....		3,086.30	3,274.10	
Ponce de Leon Trotting Association.....			1,160.30	
St. Petersburg Kennel Club, Inc.....		13,219.90	12,823.00	
Sanford-Orlando Kennel Club, Inc.....		8,107.40	8,236.30	
Sarasota Kennel Club, Inc.....		7,769.00		
Sunshine Park Racing Assoc., Inc.....		7,336.15	6,547.20	
Tropical Park, Inc.....		15,862.40	16,213.45	
Volusia Jai-Alai, Inc.....		2,419.60		
Washington County Kennel Club, Inc.....			2,639.80	
West Flagler Kennel Club, Inc.....		13,348.60	18,056.40	
TOTAL RECEIPTS HELD FOR SCHOOL FUND	\$11.10	\$190,992.95	\$212,899.90	\$403,903.95

NOTE: The following tracks prepaid the 1958-59 payments: Associated Outdoor Clubs, Inc.; Bonita-Ft. Myers Corp.; Fronton, Inc.; Hialeah Race Course, Inc.; Washington County Kennel Club, Inc.; and Palm Beach Kennel Club, Inc. Palm Beach Kennel Club, Inc. also prepaid the 1959-60 season. See our 29th Annual Report (page 18) for details.

EXHIBIT "F"

FLORIDA STATE RACING COMMISSION
**RACING REVENUE COLLECTED BY
 GEOGRAPHIC LOCATION**

BROWARD COUNTY

Broward County Kennel Club, Inc.....	\$ 649,130.91		
Gulfstream Park Racing Assoc., Inc.....	4,393,321.92		
Monro Operating Co., Inc.....	517,984.48	\$ 5,560,437.31	21.25%

CLAY COUNTY

Orange Park Kennel Club, Inc.....		259,548.94	0.99
-----------------------------------	--	------------	------

DADE COUNTY

General Office—Miscellaneous Receipts \$	1,774.60		
Biscayne Kennel Club, Inc.....	1,469,110.93		
Fronton Exhibition Co., Inc.....	564,817.16		
Hialeah Race Course, Inc.....	6,020,558.76		
Miami Beach Kennel Club, Inc.....	1,715,309.30		
Tropical Park, Inc.	2,913,524.09		
West Flagler Kennel Club, Inc.....	1,663,472.08	14,348,566.92	54.84

DUVAL COUNTY

Jacksonville Kennel Club, Inc.		301,457.44	1.15
-------------------------------------	--	------------	------

ESCAMBIA COUNTY

Florida Greyhound Racing, Inc.....		286,485.96	1.10
------------------------------------	--	------------	------

HILLSBOROUGH COUNTY

Associated Outdoor Clubs, Inc.....	\$ 702,497.65		
Gandy Operating Co., Inc.....	209,064.70		
Sunshine Park Racing Assoc., Inc.....	337,661.01	1,249,223.36	4.77

JEFFERSON COUNTY

Jefferson County Kennel Club, Inc.....		110,869.42	0.42
--	--	------------	------

LEE COUNTY

Bonita-Ft. Myers Corp.		86,833.45	0.33
-----------------------------	--	-----------	------

MONROE COUNTY

Key West Kennel Club, Inc.....		25,730.10	0.10
--------------------------------	--	-----------	------

PALM BEACH COUNTY

The Fronton, Inc.	\$ 174,281.43		
Palm Beach Kennel Club, Inc.....	593,462.54	767,743.97	2.94

PINELLAS COUNTY

St. Petersburg Kennel Club, Inc.....		1,096,685.73	4.19
--------------------------------------	--	--------------	------

SARASOTA COUNTY

Sarasota Kennel Club, Inc.		518,123.84	1.98
---------------------------------	--	------------	------

SEMINOLE COUNTY

Sanford-Orlando Kennel Club, Inc.....		551,316.88	2.11
---------------------------------------	--	------------	------

VOLUSIA COUNTY

Daytona Beach Kennel Club, Inc.....	\$ 636,144.34		
Volusia Jai-Alai, Inc.	270,482.92	906,627.26	3.47

WASHINGTON COUNTY

Washington County Kennel Club, Inc..		93,647.06	.36
--------------------------------------	--	-----------	-----

TOTAL FISCAL YEAR RECEIPTS.....		<u>\$26,163,297.64</u>	<u>100.00%</u>
--	--	------------------------	----------------

EXHIBIT "G"
OFFICERS AND DIRECTORS OF PERMIT HOLDERS

Horse Tracks:

GULFSTREAM PARK RACING ASSOCIATION, INC.
Hallandale, Florida

Officers

JAMES DONN, JR., *President* H. H. WOODSMALL, *First Vice President*
FRED C. FLIPSE, *Secretary-Treasurer*
FRANK J. PEPPER, JR., *Exec. Vice-President*
JAMES DONN, SR., *Chairman of the Board*

Directors

ARTHUR I. APPLETON	HARRISON EITELJORG	W. P. MOOTY
DAVID CANEL	FRED C. FLIPSE	FRANK J. PEPPER, JR.
JAMES DONN	HARRY L. FREYN	ALFRED A. SMITH
JAMES DONN, JR.	MAURICE A. HUTCHESON	H. H. WOODSMALL

HIALEAH RACE COURSE, INC.
P. O. Box 158, Hialeah, Florida

Officers

EUGENE E. MORI, W. H. DONOVAN, *Vice President*
President and Treasurer EVERETT A. CLAY, *Secretary*
EUGENE MORI, *Chairman of the Board*

Directors

RALPH W. CRUM	FRED W. HOOPER	EUGENE E. MORI
W. H. DONOVAN	CHARLES P. LYKES	MICHAEL G. PHIPPS
FRANK M. FOLSON	EUGENE MORI	DANIEL F. RICE

SUNSHINE PARK RACING ASSOCIATION, INC.
P. O. Box E., Oldsmar, Florida

Officers

W. FRANK HOBBS, *President* RICHARD E. WEST, *Vice-President*
C. C. VEGA, JR., *Secretary* CHARLES BALLON, *Treasurer*
FREDERICK E. M. BALLON, *Chairman of the Board of Directors*

Directors

CHARLES BALLON	NORMAN LIPSHIE	ARTHUR L. STOLL
FREDERICK E. M. BALLON	ALBERT LISKER	C. C. VEGA, JR.
DAVID GRANGER	M. I. ROBINS	EDWIN A. WEST
W. FRANK HOBBS	SEYMOUR J. SHYMAN	RICHARD E. WEST

TROPICAL PARK, INC.
P. O. Box 7007, Miami 55, Florida

Officers

SAUL SILBERMAN, *President* IRENE P. INGLE
WILLIAM B. MACDONALD, JR., *Treasurer* *Vice-President and Secretary*

Directors

IRENE P. INGLE	WILLIAM B. MACDONALD, JR.	SAUL SILBERMAN
STANLEY JAMES SILBERMAN		JOSEPH H. TYROLER

Greyhound Tracks:

ASSOCIATED OUT-DOOR CLUBS, INC.

P. O. Box 8096
Tampa 4, Florida

Officers

W. H. JOHNSTON, *President*
R. J. HART, *Secretary*
ROBERT E. HATER
Assistant Secretary

E. A. ROULEAU,
*Vice-President, General Manager
and Managing Director*
JOHN H. HATER, *Treasurer*

Directors

CHARLES W. BIDWELL, JR.
R. J. HART
JOHN H. HATER

ROBERT E. HATER
WALTER IBOLD

W. H. JOHNSTON
JAMES PATTON
E. A. ROULEAU

BISCAYNE KENNEL CLUB, INC.

817 Dade Federal Building
Miami, Florida

Officers

JAMES C. KNIGHT, *President*

ELLEN K. WHITESIDE
Vice-President and Secretary

CHARLES N. LEIGH
2nd Vice-President

FRANK G. BURGHART, *Treasurer*

Directors

LOUISE K. ADAMS
JACK Q. CLEVELAND, M.D.

JAMES C. KNIGHT
CHARLES N. LEIGH

ROBERT M. McDONALD
ELLEN K. WHITESIDE
M. LUTHER MERSHON

BONITA - FT. MYERS CORPORATION

P. O. Box 198, Bonita Springs, Florida

Officers

GEORGE E. ALLEN, *President*

JOHN WALTMAN, *Vice-President*

CARLOS M. FERRETTI, *Secretary*

Directors

GEORGE E. ALLEN

STARR HORTON

CARLOS FERRETTI

BROWARD COUNTY KENNEL CLUB, INC.

Hollywood, Florida

Officers

WILLIAM J. SYMS, JR., *President*

E. O. McCURRY, *Secretary*

THOMAS M. LYNCH, III, *Vice-President*

JAMES J. DICK, JR., *Treasurer*

Directors

THOMAS M. LYNCH, III
C. H. LANDEFELD, JR.

E. O. McCURRY

LEE McRITCHIE
WILLIAM J. SYMS, JR.

DAYTONA BEACH KENNEL CLUB, INC.

P. O. Box 2360, Daytona Beach, Florida

Officers

JOHN G. MASONI, *President and Treasurer*
JOSEPH C. LOMBARDO, *Vice-President* W. FRANK HOBBS, *Secretary*
MARVIN J. LARONGE, *Assistant Secretary* ROBERT ENTIS, *Assistant Secretary*
LAWRENCE D. JACOBS, *Assistant Treasurer*

Directors

JOHN G. MASONI JOSEPH C. LOMBARDO W. FRANK HOBBS
ROBERT ENTIS MARVIN S. LARONGE

FLORIDA GREYHOUND RACING, INC.

P. O. Box 803, Pensacola, Florida

Officers

CARL T. JOHNSON, *President*
DAVID K. FUNK, *Vice-President* J. W. DASHIELL, *Secretary-Treasurer*

Directors

J. W. DASHIELL CARL T. JOHNSON DAVID K. FUNK

JACKSONVILLE KENNEL CLUB, INC.

P. O. Box 1895, Jacksonville, Florida

Officers

W. H. JOHNSTON, SR., *President*
JAMES J. PATTON, *Vice-President* ROBERT J. HART, SR., *Secretary-Treasurer*

Directors

ROBERT J. HART, SR. W. H. JOHNSTON, SR. JAMES J. PATTON
J. R. JOHNSTON JOHN A. RUSH

JEFFERSON COUNTY KENNEL CLUB, INC.

P. O. Box 400, Monticello, Florida

Officers

STEVE ANDRIS, *President* M. HOWARD WILLIAMS, *First Vice-President*
and *General Manager* STEWART SIMPSON, *Second Vice-President*
ANDY ANDRIS, *Secretary-Treasurer*

Directors

ANDY ANDRIS W. C. HAWKINS C. T. NOEGEL
STEVE ANDRIS STEWART SIMPSON
FRED E. DEED M. HOWARD WILLIAMS

KEY WEST KENNEL CLUB, INC.

Stock Island, Key West, Florida

(Mailing Address)

SIDNEY M. ARONOVITZ, *President*

748 Ainsley Building

Miami 32, Florida

Officers

SIDNEY M. ARONOVITZ, *President*

BENJAMIN KLINE,
Vice President and Secretary

LEONARD FRIEDLAND, *Assistant Secretary*

EDWARD KAPLAN, *Treasurer*

Directors

LEONARD FRIEDLAND
SIDNEY M. ARONOVITZ

SAMUEL FRIEDLAND
BENJAMIN KLINE

DR. KURT PEISER
EDWARD KAPLAN

MIAMI BEACH KENNEL CLUB, INC.

33 Collins Avenue, Miami Beach, Florida

Officers

WM. H. JOHNSTON, *President*

JAMES PATTON, *Vice-President* CARL T. HOFFMAN, *Assistant Secretary*
J. R. JOHNSTON, *Secretary-Treasurer* FRANK R. ANDERSON, *Assistant Treasurer*

Directors

CHARLES W. BIDWILL, JR.
WILLIAM E. GARDNER

CARL T. HOFFMAN
JAMES PATTON

WM. H. JOHNSTON
J. R. JOHNSTON

ORANGE PARK KENNEL CLUB, INC.

P. O. Box 1895, Jacksonville, Florida

Officers

WM. H. JOHNSTON, SR., *President*

JOHN A. RUSH, *Vice-President* ROBERT J. HART, SR., *Assistant Secretary*
JAMES J. PATTON, *Secretary* J. R. JOHNSTON, *Treasurer*

Directors

DONALD W. HOWELL
J. R. JOHNSTON

WM. H. JOHNSTON, SR.

JAMES J. PATTON
JOHN A. RUSH

PALM BEACH KENNEL CLUB, INC.

P. O. Box 790, West Palm Beach, Florida

Officers

JOHN E. BOGGIANO, *President*

JOSEPH C. LOMBARDO, *Vice-President* JOHN G. MASONI, *Secretary-Treasurer*

Directors

JOHN E. BOGGIANO

JOSEPH C. LOMBARDO
JOHN G. MASONI

PETER CHARLES PESCI

SARASOTA KENNEL CLUB, INC.

5400 Bradenton Road, Sarasota, Florida

Officers

GUS V. WIDEN, *President*

RANDOLPH CALHOUN, *Vice-President* JERRY COLLINS, *Secretary-Treasurer and General Manager*

Directors

GUS V. WIDEN
ELON C. ROBINSON

RANDOLPH CALHOUN

JERRY COLLINS
JACK G. COLLINS

SANFORD-ORLANDO KENNEL CLUB, INC.
Longwood, Florida

Officers

MRS. KATHERINE M. A. NICHOLS, *President*
MISS MARY M. KELLY, *Vice President and Treasurer*
MR. R. C. WILLIAMSON, *Secretary* CATHERINE M. KELLY, *Assistant Secretary*

Directors

MRS. KATHERINE M. A. NICHOLS MISS MARY M. KELLY MR. JERRY COLLINS

ST. PETERSBURG KENNEL CLUB, INC.
1400 Central Avenue, St. Petersburg, Florida

Officers

A. V. WEAVER, *President*
A. D. WEAVER, *Vice-President* OTTO L. WEAVER, *Secretary-Treasurer*

Directors

A. V. LAUGHNER L. C. SHAW A. V. WEAVER
GLENN E. LOUGHRIDGE A. D. WEAVER OTTO L. WEAVER
JOYCE W. BROOKS

WASHINGTON COUNTY KENNEL CLUB, INC.
Ebro, Florida

Officers

A. L. DUNN, *President* THOS. D. TRULIS, *Vice-President and Treasurer*
STRATTON DEMETREE, *Secretary*

Directors

STRATTON DEMETREE HARRY EDWARDS THOS. D. TRULIS
A. L. DUNN M. S. HUGGINS JULIUS WATFORD (EULESS)

WEST FLAGLER KENNEL CLUB, INC.
P. O. Box 935, Miami 35, Florida

Officers

I. HECHT, JR., *President*
LOUIS GROSSMAN, *Vice-President* SIDNEY LEFCOURT, *Secretary-Treasurer*

Directors

GUS FEUER ROBERT J. GORDON LOUIS GROSSMAN
I. HECHT, JR. SIDNEY LEFCOURT

Jai-Alai:

FRONTON EXHIBITION COMPANY, INC.
3500 N. W. 37th Avenue, Miami, Florida

Officers

SAMUEL PINANSKI, *Chairman of the Board and Vice-President*
RICHARD I. BERENSON, *President* BENJAMIN A. TRUSTMAN,
JOSEPH WEINBERG, *Treasurer* *Assistant Treasurer and Secretary*

Directors

RICHARD I. BERENSON SAMUEL PINANSKI JOSEPH WEINBERG
REUBAN B. GRYZMISH BENJAMIN A. TRUSTMAN WM. C. WORLEY

THE FRONTON, INC.

1415 West 45th Street, West Palm Beach, Florida

Officers

CARLOS M. FERRETTI *President*

ARTHUR W. SILVESTER,
Executive Vice-President

JAMES L. KIRKLAND, *Secretary*

E. A. KETTEL, *Treasurer*

EDUARDO RODRIGUEZ
Assistant Secretary and Comptroller

Directors

CARLOS M. FERRETTI
EDUARDO HERNANDEZ

JAMES L. KIRKLAND
WILLIAM A. LORD
ARCHIBALD McNEIL

EDUARDO RODRIGUEZ
ARTHUR W. SILVESTER

GANDY OPERATING COMPANY, INC.

P. O. Box 13485, Tampa 11, Florida

Officers

FRANK J. KRAEMER, *President*

BERNARD I. BINDER, *Vice-President* THOMAS C. KRAEMER, *Assistant Secretary*

BERNARD CHAUNCEY, *Secretary* J. LOUIS SUMNER, *Treasurer*

Directors

BERNARD I. BINDER
BERNARD CHAUNCEY

FRANK J. KRAEMER

CHARLES MAUSER
J. LOUIS SUMNER

MONRO OPERATING COMPANY, INC.

P. O. Box 96, Dania, Florida

Officers

R. A. McANDREWS, *President*

WM. R. DAWES, *Secretary*

H. L. MANUSHAW, *Treasurer*

Directors

WM. R. DAWES

H. L. MANUSHAW
R. A. McANDREWS

CYRIL G. McANDREWS

VOLUSIA JAI-ALAI, INC.

P. O. Box 1468, Raytona Beach, Florida

Officers

VANCE SCHWARTZ, *Chairman of Board and Vice-President*

ARTHUR W. SILVESTER, *President* PHILIP BLANK, *Secretary and Comptroller*

WILLIAM A. LORD, *Treasurer*

Directors

PHILIP BLANK
VANCE SCHWARTZ

WILLIAM A. LORD

ARTHUR W. SILVESTER
DAVID BUCH

ASSOCIATED OUTDOOR CLUBS, INC.

Dog Track — Tampa

90 Racing Days — October 29, 1960 to February 14, 1961, Incl. — 105 Performances

Pari-Mutuel Handle\$10,073,076.00
 Average Performance 95,934.06
 Average Wager per Capita 50.04
 (Based on Taxable Admissions)

Total Paid Attendance 201,324
 Average Paid Attendance per Performance..... 1,917

Net Commission = 17% of P-M Handle, Less \$170.00
 Track Allowance per Race

STATE REVENUE

3/17 of Net Commission (Counties)\$ 269,642.28
 2/17 of Net Commission (Old Age Assistance)..... 179,761.52
 2/17 of Net Commission (Counties) 179,761.52
 25% of Breaks (Counties) 12,710.54
 75% of Breaks (Old Age Assistance) 38,133.23
 Admission Tax (Counties) 20,909.31
 \$ 700,918.40
 Occupational Licenses (Counties) 1,529.25
 Assumed Names (Counties) 50.00
 Total State Revenue\$ 702,497.65

TRACK REVENUE

1,085 Races @ \$170.00 Allowance per Race.....\$ 184,450.00
 10/17 of Net Commission 898,807.60
 Total Track Revenue (10.75%)\$ 1,083,257.60
 Distributed to Public from P-M Handle (82.50%)...\$ 8,309,809.31
 Distributed to Public from Track for Minus Pool... 4.89
 Total Distributed to Public\$ 8,309,814.20
 Percentage of Daily Double to Total Pool..... 9.43%
 Percentage of Quiniela to Total Pool 71.52%
 Percentage of Breaks to Total Pool 0.50%

26

Pool Classification	Amount Wagered	\$10.00 Wagers		\$5.00 Wagers		\$2.00 Wagers	
		Number	Amount	Number	Amount	Number	Amount
Daily Double	\$ 950,326.00					475,163	\$ 950,326.00
Quiniela	7,203,901.00	15,978	\$159,780.00	95,011	\$ 475,055.00	3,284,533	6,569,066.00
Win	912,080.00			79,594	397,970.00	257,055	514,110.00
Place	537,109.00			37,123	185,615.00	175,747	351,494.00
Show	469,660.00			21,064	105,320.00	182,170	364,340.00
TOTAL	\$10,073,076.00	15,978	\$159,780.00	232,792	\$1,163,960.00	4,374,668	\$8,749,336.00

The Attendance of 1,021 and Pari-Mutuel Handle of \$56,773.00 for Charity Day, January 3, 1961, not included in above.
 The Attendance of 1,341 and Pari-Mutuel Handle of \$67,463.00 for Scholarship Fund Day, December 29, 1960, not included in above.
 See Exhibit "G" for listing of officers and directors.

BISCAYNE KENNEL CLUB, INC.

Dog Track — Miami

90 Racing Days — February 16, 1961 to June 2, 1961, Incl. — 90 Performances

Pari-Mutuel Handle _____ \$19,709,282.00
 Average Performance _____ ~~218,992.02~~ ~~21,899.20~~
 Average Wager per Capita _____ 43.83
 (Based on Taxable Admissions)

Total Paid Attendance _____ 449,697
 Average Paid Attendance per Performance _____ 4,997

Net Commission = 17% of P-M Handle, Less \$170.00
 Track Allowance per Race

STATE REVENUE

3/17 of Net Commission (Counties) _____ \$ 563,048.46
 2/17 of Net Commission (Old Age Assistance) _____ 375,365.64
 2/17 of Net Commission (Counties) _____ 375,365.64
 25% of Breaks (Counties) _____ 26,839.38
 75% of Breaks (Old Age Assistance) _____ 80,519.41
 Admission Tax (Counties) _____ 47,050.40

 _____ \$ 1,468,188.93
 Occupational Licenses (Counties) _____ 922.00

 Total State Revenue _____ \$ 1,469,110.93

TRACK REVENUE

941 Races @ \$170.00 Allowance per Race _____ \$ 159,970.00
 10/17 of Net Commission _____ 1,876,828.20

 Total Track Revenue (10.33%) _____ \$ 2,036,798.20
 Distributed to Public from P-M Handle (82.46%) _____ \$16,251,345.27
 Distributed to Public from Track for Minus Pool _____ 927.43

 Total Distributed to Public _____ \$16,252,272.70

 Percentage of Daily Double to Total Pool _____ 6.25%
 Percentage of Quiniela to Total Pool _____ 70.66%
 Percentage of Breaks to Total Pool _____ 0.55%

27

Pool Classification	Amount Wagered	\$10.00 Wagers		\$5.00 Wagers		\$2.00 Wagers	
		Number	Amount	Number	Amount	Number	Amount
Daily Double	\$ 1,233,052.00	11,196	\$ 111,960.00			560,546	\$ 1,121,092.00
Quiniela	13,926,410.00	242,793	2,427,930.00			5,749,240	11,498,480.00
Win	2,286,907.00	82,116	821,160.00	64,033	\$320,165.00	572,791	1,145,582.00
Place	1,206,225.00	29,605	296,050.00	33,377	166,885.00	371,645	743,290.00
Show	1,056,688.00	21,404	214,040.00	23,018	115,090.00	363,779	727,558.00
TOTAL	\$19,709,282.00	387,114	\$3,871,140.00	120,428	\$602,140.00	7,618,001	\$15,236,002.00

The Attendance of 3,398 and Pari-Mutuel Handle of \$148,998.00 for Scholarship Fund Day, March 8, 1961, not included in above.

The Attendance of 4,421 and Pari-Mutuel Handle of \$181,626.00 for Charity Day, February 21, 1961, not included in above.

See Exhibit "G" for listing of officers and directors.

BONITA — FORT MYERS CORPORATION

Dog Track — Bonita Springs

90 Racing Days — December 30, 1960 to April 15, 1961, Incl. — 106 Performances

Pari-Mutuel Handle	\$2,390,663.00
Average Performance	22,553.42
Average Wager per Capita	35.68
(Based on Taxable Admissions)	

STATE REVENUE

3/17 of Net Commission and Sliding Scale Rate (Counties)	\$ 30,414.15
2/17 of Net Commission and Sliding Scale Rate (Old Age Assistance)	20,276.10
2/17 of Net Commission (Counties)	14,696.10
25% of Breaks (Counties)	3,439.76
75% of Breaks (Old Age Assistance)	10,320.83
Admission Tax (Counties)	6,973.26
	\$ 86,120.20
Occupational Licenses (Counties)	713.25
Total State Revenue	\$ 86,833.45

Total Paid Attendance	67,005
Average Paid Attendance per Performance	632

*Net Commission = 17% of P-M Handle, Less \$170.00
Track Allowance per Race*

TRACK REVENUE

498 Races @ \$170.00 Allowance per Race	\$ 84,660.00
8 Races—Commission Less than \$170.00 per Race	1,219.24
586 Races on Sliding Scale Rate	181,666.62
10/17 of Net Commission	73,480.50
Total Track Revenue (14.27%)	341,026.36
Total Distributed to Public from P-M Handle (82.42%)	\$1,970,489.70
Percentage of Daily Double to Total Pool	7.42%
Percentage of Quiniela to Total Pool	69.63%
Percentage of Breaks to Total Pool	0.58%

28

Pool Classification	Amount Wagered	\$5.00 Wagers		\$2.00 Wagers	
		Number	Amount	Number	Amount
Daily Double	\$ 177,456.00			88,728	\$ 177,456.00
Quiniela	1,664,678.00			832,339	1,664,678.00
Win	214,131.00	11,321	\$ 56,605.00	78,763	157,526.00
Place	167,698.00	6,144	30,720.00	68,489	136,978.00
Show	166,700.00	3,970	19,850.00	73,425	146,850.00
TOTAL	\$2,390,663.00	21,435	\$107,175.00	1,141,744	\$2,283,488.00

The Attendance of 367 and Pari-Mutuel Handle of \$12,732.00 for Scholarship Fund Day, January 3, 1961, not included in above.

The Attendance of 430 and Pari-Mutuel Handle of \$14,732.00 for Charity Day, January 10, 1961, not included in above.

See Exhibit "G" for listing of officers and directors.

BROWARD COUNTY KENNEL CLUB, INC.

Dog Track — Hollywood

40 Racing Days — January 21, 1961 to March 8, 1961, Incl. — 40 Performances

Pari-Mutuel Handle	\$8,620,402.00
Average Performance	215,510.05
Average Wager per Capita	37.49
(Based on Taxable Admissions)	

Total Paid Attendance	229,941
Average Paid Attendance per Performance	5,749

*Net Commission = 17% of P-M Handle, Less \$170.00
Track Allowance per Race*

STATE REVENUE

3/17 of Net Commission (Counties)	\$ 246,162.06
2/17 of Net Commission (Old Age Assistance)	164,108.04
2/17 of Net Commission (Counties)	164,108.04
25% of Breaks (Counties)	11,989.88
75% of Breaks (Old Age Assistance)	35,970.28
Admission Tax (Counties)	25,092.86
	\$ 647,431.16
Occupational Licenses	1,699.75
Total State Revenue	\$ 649,130.91

TRACK REVENUE

415 Races @ \$170.00 Allowance per Race	\$ 70,550.00
10/17 of Net Commission	820,540.20
Total Track Revenue (10.35%)	891,090.20
Total Distributed to Public from P-M Handle (82.44%)	\$7,106,973.50
Percentage of Daily Double to Total Pool	6.32%
Percentage of Quiniela to Total Pool	67.40%
Percentage of Breaks to Total Pool	0.56%

29

Pool Classification	Amount Wagered	\$10.00 Wagers		\$5.00 Wagers		\$2.00 Wagers		\$1.00 Wagers	
		Number	Amount	Number	Amount	Number	Amount	Number	Amount
Daily Double	\$ 544,466.00	3,727	\$ 37,270.00			253,598	\$ 507,196.00		
Quiniela	5,810,252.00	86,432	864,320.00			2,472,966	4,945,932.00		
Win	1,213,903.00	17,558	175,580.00	89,794	\$448,970.00	221,581	443,162.00	146,191	\$146,191.00
Place	571,001.00	5,819	58,190.00	35,138	175,690.00	95,465	190,930.00	146,191	146,191.00
Show	480,780.00	3,535	35,350.00	18,123	90,615.00	104,312	208,624.00	146,191	146,191.00
TOTAL	\$8,620,402.00	117,071	\$1,170,710.00	143,055	\$715,275.00	3,147,922	\$6,295,844.00	438,573	\$438,573.00

See Exhibit "G" for listing of officers and directors.

DAYTONA BEACH KENNEL CLUB, INC.

Dog Track — Daytona Beach

77 Racing Days — July 1, 1960 to June 30, 1961, Incl. — 105 Performances

Pari-Mutuel Handle\$9,084,727.00
 Average Performance 86,521.21
 Average Wager per Capita 40.67
 (Based on Taxable Admissions)

Total Paid Attendance 223,350
 Average Paid Attendance per Performance 2,127

Net Commission = 17% of P-M Handle, Less \$170.00
 Track Allowance per Race

STATE REVENUE

3/17 of Net Commission (Counties)\$ 240,171.81
 2/17 of Net Commission (Old Age Assistance) 160,114.54
 2/17 of Net Commission (Counties) 160,114.54
 25% of Breaks (Counties) 12,646.83
 75% of Breaks (Old Age Assistance) 37,941.92
 Admission Tax (Counties) 22,995.70
 \$ 633,985.34
 Occupational Licenses (Counties) 2,059.25
 Assumed Names (Counties) 40.00
 \$ 636,084.59

TRACK REVENUE

1,079 Races @ \$170.00 Allowance per Race\$ 183,430.00
 10/17 of Net Commission 800,572.70
 Total Track Revenue (10.83%)\$ 984,002.70
 Distributed to Public from P-M Handle (82.44%)\$7,489,734.66
 Distributed to Public from Track for Minus Pool 42.14
 Total Distributed to Public\$7,489,776.80
 Percentage of Daily Double to Total Pool 7.74%
 Percentage of Quiniela to Total Pool 72.18%
 Percentage of Breaks to Total Pool 0.56%

30

Pool Classification	Amount Wagered	\$5.00 Wagers		\$2.00 Wagers	
		Number	Amount	Number	Amount
Daily Double	\$ 702,898.00			351,449	\$ 702,898.00
Quiniela	6,557,276.00			3,278,638	6,557,276.00
Win	804,687.00	62,127	\$310,635.00	247,026	494,052.00
Place	506,477.00	29,689	148,445.00	179,016	358,032.00
Show	513,389.00	20,019	100,095.00	206,647	413,294.00
TOTAL	\$9,084,727.00	111,835	\$559,175.00	4,262,776	\$8,525,552.00

Closed September 10, 12, 13, and 14th, due to storm damage.

See Exhibit "G" for listing of officers and directors.

FLORIDA GREYHOUND RACING, INC.

Dog Track — Pensacola

91 Racing Days — July 1, 1960 to June 30, 1961, Incl.—110 Performances

Pari-Mutuel Handle\$4,616,278.00
 Average Performance 41,966.16
 Average Wager per Capita 39.08
 (Based on Taxable Admissions)

Total Paid Attendance 118,119
 Average Paid Attendance per Performance 1,074
 Net Commission = 17% of P-M Handle, Less \$170.00
 Track Allowance per Race

STATE REVENUE

3/17 of Net Commission (Counties)\$ 104,408.34
 2/17 of Net Commission (Old Age Assistance) 69,605.56
 2/17 of Net Commission (Counties) 69,605.56
 25% of Breaks (Counties) 6,917.28
 75% of Breaks (Old Age Assistance) 20,753.65
 Admission Tax (Counties) 13,459.33

\$ 284,749.72
 Occupational Licenses (Counties) 1,700.75
 Assumed Names (Counties) 30.00

 Total State Revenue\$ 286,480.47

TRACK REVENUE

1,136 Races @ \$170.00 Allowance per Race\$ 193,120.00
 10/17 of Net Commission 348,027.80

 Total Track Revenue (11.72%)\$ 541,147.80

 Distributed to Public from P-M Handle (82.40%)\$3,803,839.81
 Distributed to Public from Track for Minus Pool 4.49

 Total Distributed to Public\$3,803,844.30

 Percentage of Daily Double to Total Pool 6.03%
 Percentage of Quiniela to Total Pool 72.74%
 Percentage of Breaks to Total Pool 0.60%

31

Pool Classification	Amount Wagered	\$10.00 Wagers		\$5.00 Wagers		\$2.00 Wagers	
		Number	Amount	Number	Amount	Number	Amount
Daily Double	\$ 278,348.00					139,174	\$ 278,348.00
Quiniela	3,357,888.00	2,359	\$23,590.00			1,667,149	3,334,298.00
Win	378,315.00			24,967	\$124,835.00	126,740	253,480.00
Place	269,181.00			11,033	55,165.00	107,008	214,016.00
Show	332,546.00			7,714	38,570.00	146,988	293,976.00
TOTAL	\$4,616,278.00	2,359	\$23,590.00	43,714	\$218,570.00	2,187,059	\$4,374,118.00

The Attendance of 950 and Pari-Mutuel Handle of \$32,452.00 for Scholarship Fund Day, May 30, 1961, not included in above.

The Attendance of 978 and Pari-Mutuel Handle of \$30,942.00 for Charity Day, May 31, 1961, not included in above.

Closed September 6, 1960.

See Exhibit "G" for listing of officers and directors.

JACKSONVILLE KENNEL CLUB, INC.

Dog Track — Jacksonville

90 Racing Days — December 26, 1960 to April 12, 1961, Incl. — 95 Performances

Pari-Mutuel Handle\$4,782,572.00
 Average Performance 50,342.86
 Average Wager per Capita 46.26
 (Based on Taxable Admissions)

Total Paid Attendance 103,393
 Average Paid Attendance per Performance 1,088
 Net Commission = 17% of P-M Handle, Less \$170.00
 Track Allowance per Race

STATE REVENUE

3/17 of Net Commission (Counties)\$ 113,957.16
 2/17 of Net Commission (Old Age Assistance) 75,971.44
 2/17 of Net Commission (Counties) 75,971.44
 25% of Breaks (Counties) 6,253.11
 75% of Breaks (Old Age Assistance) 18,760.74
 Admission Tax (Counties) 10,339.30

TRACK REVENUE

984 Races @ \$170.00 Allowance per Race\$ 167,280.00
 10/17 of Net Commission 379,857.20

\$ 301,253.19

Occupational Licenses (Counties) 194.25
 Assumed Names (Counties) 10.00

Total State Revenue\$ 301,457.44

Total Track Revenue (11.44%)\$ 547,137.20

Distributed to Public from P-M Handle (82.48%)\$3,944,520.91
 Distributed to Public from Track for Minus Pool 56.29

Total Distributed to Public\$3,944,577.20

Percentage of Daily Double to Total Pool 7.81%
 Percentage of Quiniela to Total Pool 74.93%
 Percentage of Breaks to Total Pool 0.52%

32

Pool Classification	Amount Wagered	\$5.00 Wagers		\$2.00 Wagers	
		Number	Amount	Number	Amount
Daily Double	\$ 373,696.00			186,848	\$ 373,696.00
Quiniela	3,583,502.00	56,014	\$280,070.00	1,651,716	3,000,432.00 3,303,432.00
Win	369,870.00	24,332	121,660.00	124,105	248,210.00
Place	244,790.00	11,438	57,190.00	93,800	187,600.00
Show	210,714.00	5,830	29,150.00	90,782	181,564.00
TOTAL	\$4,782,572.00	97,614	\$488,070.00	2,147,251	\$4,294,502.00

The Attendance of 556 and Pari-Mutuel Handle of \$26,092.00 for Scholarship Fund Day, January 25, 1961, not included in above.

The Attendance of 808 and Pari-Mutuel Handle of \$42,392.00 for Charity Day, January 11, 1961, not included in above.

Closed March 31, 1961.

See Exhibit "G" for listing of officers and directors.

JEFFERSON COUNTY KENNEL CLUB, INC.
Dog Track — Monticello

79 Racing Days — July 1, 1960 to June 30, 1961, Incl. — 97 Performances

Pari-Mutuel Handle	\$2,516,794.00
Average Performance	25,946.33
Average Wager per Capita	45.13
(Based on Taxable Admissions)	

Total Paid Attendance	55,766
Average Paid Attendance per Performance	575
Net Commission = 17% of P-M Handle, Less \$170.00 Track Allowance per Race	

STATE REVENUE

3/17 of Net Commission and Sliding Scale Rate (Counties)	\$ 39,548.10
2/17 of Net Commission and Sliding Scale Rate (Old Age Assistance)	26,365.40
2/17 of Net Commission (Counties)	22,985.40
25% of Breaks (Counties)	3,791.09
75% of Breaks (Old Age Assistance)	11,374.59
Admission Tax (Counties)	5,657.59
	<u>\$ 109,722.17</u>
Occupational Licenses (Counties)	1,002.50
Assumed Names (Counties)	30.00
Total State Revenue	<u><u>\$ 110,754.67</u></u>

TRACK REVENUE

635 Races @ \$170.00 Allowance per Race	\$ ^{107,950.00} 170,950.00
33 Races—Commission Less than \$170.00 per Race	4,727.70
330 Races on Sliding Scale Rate	111,351.38
10/17 of Net Commission	114,927.00
Total Track Revenue (13.47%)	<u>\$ 338,956.08</u>
Distributed to Public from P-M Handle (82.40%)	\$2,073,773.34
Distributed to Public from Track for Minus Pool	23.06
Total Distributed to Public	<u>\$2,073,796.40</u>
Percentage of Daily Double to Total Pool	7.06%
Percentage of Quiniela to Total Pool	72.46%
Percentage of Breaks to Total Pool	0.60%

33

Pool Classification	Amount Wagered	\$5.00 Wagers		\$2.00 Wagers	
		Number	Amount	Number	Amount
Daily Double	\$ 177,736.00			88,868	\$ 177,736.00
Quiniela	1,823,580.00			911,790	1,823,580.00
Win	173,720.00	3,382	\$16,910.00	78,405	156,810.00
Place	160,138.00	2,190	10,950.00	74,594	149,188.00
Show	181,620.00	1,254	6,270.00	87,675	175,350.00
TOTAL	<u>\$2,516,794.00</u>	6,826	\$34,130.00	1,241,332	\$2,482,664.00

The Attendance of 686 and Pari-Mutuel Handle of \$30,771.00 for Scholarship Fund day, August 16, 1960, not included in above.
The Attendance of 477 and Pari-Mutuel Handle of \$20,320.00 for Charity Day, July 19, 1960, not included in above.
See Exhibit "G" for listing of officers and directors.

KEY WEST KENNEL CLUB, INC.

Dog Track — Key West

89 Racing Days — December 26, 1960 to April 8, 1961, Incl. — 89 Performances

Pari-Mutuel Handle _____ \$1,117,991.00
 Average Performance _____ 12,561.69
 Average Wager per Capita _____ 30.18
 (Based on Taxable Admissions)

Total Paid Attendance _____ 37,048
 Average Paid Attendance per Performance _____ 416

*Net Commission = 17% of P-M Handle, Less \$170.00
 Track Allowance per Race*

STATE REVENUE

3/17 of Net Commission and Sliding Scale Rate
 (Counties) _____ \$ 8,130.00
 2/17 of Net Commission and Sliding Scale Rate
 (Old Age Assistance) _____ 5,420.00
 25% of Breaks (Counties) _____ 1,945.07
 75% of Breaks (Old Age Assistance) _____ 5,836.75
 Admission Tax (Counties) _____ 3,712.03

 \$ 25,043.85
 Occupational Licenses (Counties) _____ 676.25
 Assumed Names (Counties) _____ 10.00

 Total State Revenue _____ \$ 25,730.10

TRACK REVENUE

921 Races on Sliding Scale Rate _____ \$ 176,508.47
 Total Track Revenue (15.79%) _____ \$ 176,508.47
 Distributed to Public from P-M Handle (82.30%) _____ \$ 920,150.71
 Distributed to Public from Track for Minus Pool _____ .59

 Total Distributed to Public _____ \$ 920,151.30
 Percentage of Daily Double to Total Pool _____ 9.28%
 Percentage of Quiniela to Total Pool _____ 59.10%
 Percentage of Breaks to Total Pool _____ 0.70%

34

Pool Classification	Amount Wagered	\$5.00 Wagers		\$2.00 Wagers	
		Number	Amount	Number	Amount
Daily Double	\$ 103,720.00			51,860	\$ 103,720.00
Quiniela	660,728.00			330,364	660,728.00
Win	141,592.00	6,812	\$34,060.00	53,766	107,532.00
Place	106,834.00	3,116	15,580.00	45,627	91,254.00
Show	105,117.00	2,323	11,615.00	46,751	93,502.00
TOTAL	\$1,117,991.00	12,251	\$61,255.00	528,368	\$1,056,736.00

The Attendance of 258 and Pari-Mutuel Handle of \$11,619.00 for Charity Day, March 31, 1961, not included in above.
 See Exhibit "G" for listing of officers and directors.

MIAMI BEACH KENNEL CLUB, INC.

Dog Track — Miami Beach

50 Racing Days — July 1, 1960 to August 27, 1960, Incl. — 52 Performances

Pari-Mutuel Handle\$9,969,453.00
 Average Performance 191,720.25
 Average Wager per Capita 41.19
 (Based on Taxable Admissions)

Total Paid Attendance 242,016
 Average Paid Attendance per Performance 4,654

*Net Commission = 17% of P-M Handle, Less \$170.00
 Track Allowance per Race*

STATE REVENUE

3/17 of Net Commission (Counties)\$ 282,913.59
 2/17 of Net Commission (Old Age Assistance)..... 188,609.06
 2/17 of Net Commission (Counties) 188,609.06
 25% of Breaks (Counties) 13,894.09
 75% of Breaks (Old Age Assistance) 41,683.08
 Admission Tax (Counties) 26,964.62
 \$ 742,673.50
 Occupational Licenses (Counties) 2,164.25
 Assumed Names (Counties) 50.00
 Total State Revenue\$ 744,887.75

TRACK REVENUE

539 Races @ \$170.00 Allowance per Race\$ 91,630.00
 10/17 of Net Commission 943,045.30
 Total Track Revenue (10.38%)\$1,034,675.30
 Distributed to Public from P-M Handle (82.44%)\$8,219,068.82
 Distributed to Public from Track for Minus Pool..... 22.28
 Total Distributed to Public\$8,219,091.10
 Percentage of Daily Double to Total Pool..... 5.97%
 Percentage of Quiniela to Total Pool 69.90%
 Percentage of Breaks to Total Pool 0.56%

35

Pool Classification	Amount Wagered	\$10.00 Wagers		\$5.00 Wagers		\$2.00 Wagers	
		Number	Amount	Number	Amount	Number	Amount
Daily Double	\$ 595,408.00					297,704	\$ 595,408.00
Quiniela	6,968,488.00	109,262	\$1,092,620.00			2,937,934	5,875,868.00
Win	1,297,304.00	24,732	247,320.00	82,332	\$411,660.00	319,162	638,324.00
Place	615,184.00	8,581	85,810.00	30,868	154,340.00	187,517	375,034.00
Show	493,069.00	6,560	65,600.00	16,151	80,755.00	173,357	346,714.00
TOTAL	\$9,969,453.00	149,135	\$1,491,350.00	129,351	\$646,755.00	3,915,674	\$7,831,348.00

See Exhibit "G" for listing of officers and directors.

MIAMI BEACH KENNEL CLUB, INC.

Dog Track — Miami Beach

90 Racing Days — December 26, 1960 to April 11, 1961, Incl. — 90 Performances

Pari-Mutuel Handle	\$13,333,135.00
Average Performance	148,145.94
Average Wager per Capita	42.27
(Based on Taxable Admissions)	

Total Paid Attendance	315,427
Average Paid Attendance per Performance	3,505
<i>Net Commission = 17% of P-M Handle, Less \$170.00 Track Allowance per Race</i>	

STATE REVENUE

3/17 of Net Commission (Counties)	\$ 372,004.05
2/17 of Net Commission (Old Age Assistance)	248,002.70
2/17 of Net Commission (Counties)	248,002.70
25% of Breaks (Counties)	16,774.90
75% of Breaks (Old Age Assistance)	50,325.89
Admission Tax (Counties)	34,431.06
	\$ 969,541.30
Occupational Licenses (Counties)	860.25
Assumed Names (Counties)	20.00
Total State Revenue	\$ 970,421.55

TRACK REVENUE

933 Races @ \$170.00 Allowance per Race	\$ 158,610.00
10/17 of Net Commission	1,240,013.50
Total Track Revenue (10.49%)	\$ 1,398,623.50
Distributed to Public from P-M Handle (82.50%)	\$10,999,401.26
Distributed to Public from Track for Minus Pool	27.94
Total Distributed to Public	\$10,999,429.20
Percentage of Daily Double to Total Pool	5.85%
Percentage of Quiniela to Total Pool	72.42%
Percentage of Breaks to Total Pool	0.50%

36

Pool Classification	Amount Wagered	\$10.00 Wagers		\$5.00 Wagers		\$2.00 Wagers	
		Number	Amount	Number	Amount	Number	Amount
Daily Double	\$ 780,162.00					390,081	\$ 780,162.00
Quiniela	9,655,708.00	136,326	\$1,363,260.00			4,146,224	8,292,448.00
Win	1,527,628.00	33,412	334,120.00	92,048	\$460,240.00	366,634	733,268.00
Place	767,406.00	10,169	101,690.00	34,930	174,650.00	245,533	491,066.00
Show	602,231.00	6,468	64,680.00	18,311	91,555.00	222,998	445,996.00
TOTAL	\$13,333,135.00	186,375	\$1,863,750.00	145,289	\$726,445.00	5,371,470	\$10,742,940.00

The Attendance of 2,037 and Pari-Mutuel Handle of \$81,125.00 for Scholarship Fund Day, December 31, 1960; not included in above.

The Attendance of 2,321 and Pari-Mutuel Handle of \$104,468.00 for Charity Day, January 4, 1961, not included in above.

See Exhibit "G" for listing of officers and directors.

ORANGE PARK KENNEL CLUB, INC.

Dog Track — Orange Park

47 Racing Days — October 1, 1960 to November 26, 1960, Incl. — 47 Performances

44 Racing Days — April 14, 1961 to June 3, 1961, Incl. — 49 Performances

91 Racing Days — Fiscal Year Ending June 30, 1961, Incl. — 96 Performances

Pari-Mutuel Handle \$4,259,390.00
 Average Performance 44,368.65
 Average Wager per Capita 47.76
 (Based on Taxable Admissions)

Total Paid Attendance 89,192
 Average Paid Attendance per Performance 929
 Net Commission = 17% of P-M Handle, Less \$170.00
 Track Allowance per Race

STATE REVENUE

3/17 of Net Commission and Sliding Scale Rate
 (Counties) \$ 97,805.58
 2/17 of Net Commission and Sliding Scale Rate
 (Old Age Assistance) 65,203.72
 2/17 of Net Commission (Counties) 65,043.72
 25% of Breaks (Counties) 5,446.52
 75% of Breaks (Old Age Assistance) 16,340.95
 Admission Tax (Counties) 8,919.20

TRACK REVENUE

983 Races @ \$170.00 Allowance per Race \$ 167,110.00
 10 Races on Sliding Scale Rate 3,714.68
 10/17 of Net Commission 325,218.60

Occupational Licenses (Counties) 779.25
 Assumed Names (Counties) 10.00
 Total State Revenue \$ 259,548.94

Total Track Revenue (11.65%) \$ 496,043.28
 Distributed to Public from P-M Handle (82.49%) \$3,513,506.23
 Distributed to Public from Track for Minus Pool 27.57

Total Distributed to Public \$3,513,533.80

Percentage of Daily Double to Total Pool 7.52%
 Percentage of Quiniela to Total Pool 74.90%
 Percentage of Breaks to Total Pool 0.51%

Pool Classification	Amount Wagered	\$5.00 Wagers		\$2.00 Wagers	
		Number	Amount	Number	Amount
Daily Double	\$ 320,012.00			160,006	\$ 320,012.00
Quiniela	3,190,482.00	52,510	\$262,550.00	1,463,966	2,927,932.00
Win	328,422.00	18,452	92,260.00	118,081	236,162.00
Place	218,645.00	8,253	41,265.00	88,690	177,380.00
Show	201,829.00	4,525	22,625.00	89,602	179,204.00
TOTAL	\$4,259,390.00	83,740	\$418,700.00	1,920,345	\$3,840,690.00

The Attendance of 847 and Pari-Mutuel Handle of \$40,344.00 for Scholarship Fund Day, November 2, 1960, not included in above.

The Attendance of 857 and Pari-Mutuel Handle of \$39,293.00 for Charity Day, November 23, 1960, not included in above.

See Exhibit "G" for listing of officers and directors.

PALM BEACH KENNEL CLUB, INC.

Dog Track — Palm Beach

90 Racing Days — January 2, 1961 to April 19, 1961, Inc. — 90 Performances

Pari-Mutuel Handle	\$8,460,649.00
Average Performance	94,007.21
Average Wager per Capita	45.17
(Based on Taxable Admissions)	

Total Paid Attendance	187,332
Average Paid Attendance per Performance	2,081
Net Commission = 17% of P-M Handle, Less \$170.00 Track Allowance per Race	

STATE REVENUE

3/17 of Net Commission (Counties)	\$ 225,859.47
2/17 of Net Commission (Old Age Assistance)	150,572.98
2/17 of Net Commission (Counties)	150,572.98
25% of Breaks (Counties)	11,534.24
75% of Breaks (Old Age Assistance)	34,604.03
Admission Tax (Counties)	18,983.09
	<u>\$ 592,126.79</u>
Occupational Licenses (Counties)	1,315.75
Assumed Names (Counties)	20.00
Total State Revenue	<u>\$ 593,462.54</u>

TRACK REVENUE

932 Races @ \$170.00 Allowance per Race	\$ 158,440.00
10/17 of Net Commission	752,864.90
Total Track Revenue (10.77%)	<u>\$ 911,304.90</u>
Total Distributed to Public from P-M Handle (82.45%)	<u>\$6,976,200.40</u>
Percentage of Daily Double to Total Pool	10.52%
Percentage of Quiniela to Total Pool	68.72%
Percentage of Breaks to Total Pool	0.55%

38

Pool Classification	Amount Wagered	\$5.00 Wagers		\$2.00 Wagers	
		Number	Amount	Number	Amount
Daily Double	\$ 889,914.00			444,957	\$ 889,914.00
Quiniela	5,814,462.00			2,907,231	5,814,462.00
Win	772,031.00	53,295	\$266,475.00	252,778	505,556.00
Place	489,774.00	26,722	133,610.00	178,082	356,164.00
Show	494,468.00	18,556	92,780.00	200,844	401,688.00
TOTAL	\$8,460,649.00	98,573	\$492,865.00	3,983,892	\$7,967,784.00

The Attendance of 1,459 and Pari-Mutuel Handle of \$70,059.00 for Scholarship Fund Day, January 12, 1961, not included in above.

The Attendance of 1,562 and Pari-Mutuel Handle of \$68,316.00 for Charity Day, January 5, 1961, not included in above.

Closed March 31, 1961.

See Exhibit "G" for listing of officers and directors.

SARASOTA KENNEL CLUB, INC.

Dog Track — Sarasota

90 Racing Days — February 15, 1961 to June 1, 1961, Incl. — 136 Performances

Pari-Mutuel Handle	\$7,854,167.00
Average Performance	57,751.23
Average Wager per Capita	39.26
(Based on Taxable Admissions)	

Total Paid Attendance	200,073
Average Paid Attendance per Performance	1,471
Net Commission = 17% of P-M Handle, Less \$170.00 Track Allowance per Race	

STATE REVENUE

3/17 of Net Commission (Counties)	\$ 193,865.01
2/17 of Net Commission (Old Age Assistance)	129,243.34
2/17 of Net Commission (Counties)	129,243.34
25% of Breaks (Counties)	11,085.57
75% of Breaks (Old Age Assistance)	33,258.82
Admission Tax (Counties)	20,724.51
	<u>\$ 517,420.59</u>
Occupational Licenses (Counties)	703.25
Total State Revenue	<u>\$ 518,123.84</u>

TRACK REVENUE

1,392 Races @ \$170.00 Allowance per Race	\$ 236,640.00
10/17 of Net Commission	646,216.70
Total Track Revenue (11.24%)	<u>\$ 882,856.70</u>
Distributed to Public from P-M Handle (82.44%)	\$6,474,614.22
Distributed to Public from Track for Minus Pool98
Total Distributed to Public	<u>\$6,474,615.20</u>
Percentage of Daily Double to Total Pool	7.66%
Percentage of Quiniela to Total Pool	70.82%
Percentage of Breaks to Total Pool	0.56%

39

Pool Classification	Amount Wagered	\$10.00 Wagers		\$5.00 Wagers		\$2.00 Wagers	
		Number	Amount	Number	Amount	Number	Amount
Daily Double	\$ 601,764.00					300,882	\$ 601,764.00
Quiniela	5,562,546.00	27,794	\$277,940.00			2,642,303	5,284,606.00
Win	735,072.00			33,398	\$166,990.00	284,041	568,082.00
Place	508,071.00			16,155	80,775.00	213,648	427,296.00
Show	446,714.00			9,516	47,580.00	199,567	399,134.00
TOTAL	\$7,854,167.00	27,794	\$277,940.00	59,069	\$295,345.00	3,640,441	\$7,280,882.00

The Attendance of 1,947 and Pari-Mutuel Handle of \$42,737.00 for Scholarship Fund Day, March 16, 1961 not included in above.

The Attendance of 1,632 and Pari-Mutuel Handle of \$46,184.00 for Charity Day, March 30, 1961, not included in above.

See Exhibit "G" for listing of officers and directors.

SANFORD ORLANDO KENNEL CLUB, INC.

Dog Track — Longwood

90 Racing Days — December 17, 1960 to April 3, 1961, Incl. — 136 Performances

Pari-Mutuel Handle _____ \$8,309,207.00
 Average Performance _____ 61,097.11
 Average Wager Per Capita _____ 47.00
 (Based on Taxable Admissions)

Total Paid Attendance _____ 176,780
 Average Paid Attendance per Performance _____ 1,300
 Net Commission = 17% of P-M Handle, Less \$170.00
 Track Allowance per Race

STATE REVENUE

3/17 of Net Commission (Counties) _____ \$ 207,516.21
 2/17 of Net Commission (Old Age Assistance) _____ 138,344.14
 2/17 of Net Commission (Counties) _____ 138,344.14
 25% of Breaks (Counties) _____ 11,745.53
 75% of Breaks (Old Age Assistance) _____ 35,238.49
 Admission Tax (Counties) _____ 18,743.37

 _____ \$ 549,931.88
 Occupational Licenses (Counties) _____ 1,345.00
 Assumed Names (Counties) _____ 40.00

 Total State Revenue _____ \$ 551,316.88

TRACK REVENUE

1,392 Races @ \$170.00 Allowance per Race _____ \$ 236,640.00
 10/17 of Net Commission _____ 691,720.70

 Total Track Revenue (11.17%) _____ \$ 928,360.70

 Distributed to Public from P-M Handle (82.44%) _____ \$6,849,657.79
 Distributed to Public from Track for Minus Pool _____ 2.71

 Total Distributed to Public _____ \$6,849,660.50

 Percentage of Daily Double to Total Pool _____ 7.56%
 Percentage of Quiniela to Total Pool _____ 71.09%
 Percentage fo Breaks to Total Pool _____ 0.57%

40

Pool Classification	Amount Wagered	\$5.00 Wagers		\$2.00 Wagers	
		Number	Amount	Number	Amount
Daily Double	\$ 628,210.00			314,105	\$ 628,210.00
Quiniela	5,905,596.00			2,952,798	5,905,596.00
Win	792,174.00	50,306	\$251,530.00	270,322	540,644.00
Place	508,941.00	24,993	124,965.00	191,988	383,976.00
Show	474,286.00	15,670	78,350.00	197,968	395,936.00
TOTAL	\$8,309,207.00	90,969	\$454,845.00	3,927,181	\$7,854,362.00

The Attendance of 990 and Pari-Mutuel Handle of \$47,037.00 for Scholarship Fund Day, December 20, 1960, not included in above.
 The Attendance of 1,434 and Pari-Mutuel Handle of \$57,760.00 for Charity Day, January 12, 1961, not included in above.
 See Exhibit "G" for listing of officers and directors.

ST. PETERSBURG KENNEL CLUB, INC.

Dog Track — St. Petersburg

90 Racing Days — December 29, 1960 to April 15, 1961, Incl. — 129 Performances

Pari-Mutuel Handle\$15,082,975.00
 Average Performance 116,922.28
 Average Wager per Capita 35.71
 (Based on Taxable Admissions)

Total Paid Attendance 422,330
 Average Paid Attendance per Performance 3,274
 Net Commission = 17% of P-M Handle, Less \$170.00
 Track Allowance per Race

STATE REVENUE

3/17 of Net Commission (Counties)\$ 413,159.25
 2/17 of Net Commission (Old Age Assistance) 275,439.50
 2/17 of Net Commission (Counties) 275,439.50
 25% of Breaks (Counties) 21,872.71
 75% of Breaks (Old Age Assistance) 65,619.67
 Admsision Tax (Counties) 43,307.10
 \$ 1,094,837.73
 Occupational Licenses (Counties) 1,838.00
 Assumed Names (Counties) 10.00
 Total State Revenue\$ 1,096,685.73

TRACK REVENUE

1,311 Races @ \$170.00 Allowance per Race\$ 222,870.00
 10/17 of Net Commission 1,377,197.50
 Total Track Revenue (10.61%)\$ 1,600,067.50
 Distributed to Public from P-M Handle (82.42%)\$12,431,376.87
 Distributed to Public from Track for Minus Pool 14.93
 Total Distributed to Public\$12,431,391.80
 Percentage of Daily Double to Total Pool 9.06%
 Percentage of Quiniela to Total Pool 69.17%
 Percentage of Breaks to Total Pool 0.58%

41

Pool Classification	Amount Wagered	\$5.00 Wagers		\$2.00 Wagers	
		Number	Amount	Number	Amount
Daily Double	\$ 1,366,218.00			683,109	\$ 1,366,218.00
Quiniela	10,433,088.00			5,216,544	10,433,088.00
Win	1,470,682.00	86,266	\$431,330.00	519,676	1,039,352.00
Place	922,484.00	40,874	204,370.00	359,057	718,114.00
Show	890,503.00	26,577	132,885.00	378,809	757,618.00
TOTAL	\$15,082,975.00	153,717	\$768,585.00	7,157,195	\$14,314,390.00

The Attendance of 1,886 and Pari-Mutuel Handle of \$65,423.00 for Scholarship Fund Day, January 5, 1961, not included in above.

The Attendance of 2,336 and Pari-Mutuel Handle of \$83,574.00 for Charity Day, January 12, 1961, not included in above.

Closed March 31, 1961.

See Exhibit "G" for listing of officers and directors.

WASHINGTON COUNTY KENNEL CLUB, INC.

Dog Track — Ebro

91 Racing Days — July 1, 1960 to June 30, 1961, Incl. — 94 Performances

Pari-Mutuel Handle	\$2,401,299.00
Average Performance	25,545.74
Average Wager per Capita	37.04
(Based on Taxable Admissions)	

Total Paid Attendance	64,825
Average Paid Attendance per Performance	690

Net Commission = 17% of P-M Handle, Less \$170.00
Track Allowance per Race

STATE REVENUE

3/17 of Net Commission and Sliding Scale Rate (Counties)	\$ 33,089.58
2/17 of Net Commission and Sliding Scale Rate (Old Age Assistance)	22,059.72
2/17 of Net Commission (Counties)	16,099.72
25% of Breaks (Counties)	3,704.65
75% of Breaks (Old Age Assistance)	11,115.14
Admission Tax (Counties)	6,482.50
	\$ 92,551.31
Occupational Licenses (Counties)	1,055.75
Assumed Names (Counties)	40.00
	\$ 93,647.06

TRACK REVENUE

400 Races @ \$170.00 Allowance per Race	\$ 68,000.00
575 Races on Sliding Scale Rate	188,473.21
10/17 of Net Commission	80,498.60
	\$ 336,971.81
Total Track Revenue (14.03%)	\$ 336,971.81
Distributed to Public from P-M Handle (82.39%)	\$1,978,258.38
Distributed to Public from Track for Minus Pool	3.62
	\$1,978,262.00
Total Distributed to Public	\$1,978,262.00
Percentage of Daily Double to Total Pool	6.67%
Percentage of Quiniela to Total Pool	67.56%
Percentage of Breaks to Total Pool	0.62%

42

Pool Classification	Amount Wagered	\$5.00 Wagers		\$2.00 Wagers	
		Number	Amount	Number	Amount
Daily Double	\$ 160,110.00			80,055	\$ 160,110.00
Quiniela	1,622,438.00			811,219	1,622,438.00
Win	241,025.00	10,899	\$ 54,495.00	93,265	186,530.00
Place	164,894.00	5,494	27,470.00	68,712	137,424.00
Show	212,832.00	4,154	20,770.00	96,031	192,062.00
TOTAL	\$2,401,299.00	20,547	\$102,735.00	1,149,282	\$2,298,564.00

The Attendance of 658 and Pari-Mutuel Handle of \$21,894.00 for Scholarship Fund Day, June 6, 1961, not included in above.

The Attendance of 558 and Pari-Mutuel Handle of \$19,580.00 for Charity Day, June 8, 1961, not included in above.

Closed May 29, 1961.

See Exhibit "G" for listing of officers and directors.

WEST FLAGLER KENNEL CLUB, INC.

Dog Track — Miami

90 Racing Days — October 29, 1960 to February 13, 1961, Incl. — 90 Performances

Pari-Mutuel Handle _____ \$22,062,594.00
 Average Performance _____ 245,139.93
 Average Wager per Capita _____ 43.53
 (Based on Taxable Admissions)

Total Paid Attendance _____ 506,802
 Average Paid Attendance per Performance _____ 5,631
 Net Commission = 17% of P-M Handle, Less \$170.00
 Track Allowance per Race

STATE REVENUE

3/17 of Net Commission (Counties) _____ \$ 633,827.82
 2/17 of Net Commission (Old Age Assistance) _____ 422,551.88
 2/17 of Net Commission (Counties) _____ 422,551.88
 25% of Breaks (Counties) _____ 32,320.32
 75% of Breaks (Old Age Assistance) _____ 96,961.74
 Admission Tax (Counties) _____ 52,735.19
 _____ \$ 1,660,948.83
 Occupational Licenses (Counties) _____ 2,463.25
 Assumed Names (Counties) _____ 60.00
 Total State Revenue _____ \$ 1,663,472.08

TRACK REVENUE

935 Races @ \$170.00 Allowance per Race _____ \$ 158,950.00
 10/17 of Net Commission _____ 2,112,759.40
 Total Track Revenue (10.30%) _____ \$ 2,271,709.40
 Distributed to Public from P-M Handle (82.41%) _____ \$18,182,670.96
 Distributed to Public from Track for Minus Pool _____ 83.24
 Total Distributed to Public _____ \$18,182,754.20
 Percentage of Daily Double to Total Pool _____ 5.62%
 Percentage of Quiniela to Total Pool _____ 69.75%
 Percentage of Breaks to Total Pool _____ 0.59%

43

Pool Classification	Amount Wagered	\$50.00 Wagers		\$10.00 Wagers		\$2.00 Wagers	
		Number	Amount	Number	Amount	Number	Amount
Daily Double	\$ 1,240,106.00			9,974	\$ 99,740.00	570,183	\$ 1,140,366.00
Quiniela	15,388,522.00			261,446	2,614,460.00	6,387,031	12,774,062.00
Win	2,858,932.00	2,085	\$104,250.00	110,119	1,101,190.00	826,746	1,653,492.00
Place	1,397,624.00	765	38,250.00	36,832	368,320.00	495,527	991,054.00
Show	1,177,410.00	774	38,700.00	25,269	252,690.00	443,010	886,020.00
TOTAL	\$22,062,594.00	3,624	\$181,200.00	443,640	\$4,436,400.00	8,722,497	\$17,444,994.00

The Attendance of 4,286 and Pari-Mutuel Handle of \$182,776.00 for Scholarship Fund Day, January 25, 1961, not included in above.
 The Attendance of 3,972 and Pari-Mutuel Handle of \$175,766.00 for Charity Day, January 24, 1961, not included in above.
 See Exhibit "G" for listing of officers and directors.

FRONTON EXHIBITION COMPANY, INC.

Jai-Alai — Miami

100 Playing Days — December 9, 1960 to April 8, 1961, Incl. — 100 Performances

Pari-Mutuel Handle	\$10,033,690.00
Average Performance	100,336.90
Average Wager per Capita	29.36
(Based on Taxable Admissions)	

STATE REVENUE

3% of P-M Handle (Counties)	\$ 301,010.70
2% of P-M Handle (Old Age Assistance)	200,673.80
50% of Breaks (Old Age Assistance)	18,428.04
Admission Tax (Counties)	43,396.87
	<u>\$ 563,509.41</u>
Occupational Licenses (Counties)	1,307.75
Total State Revenue	<u>\$ 564,817.16</u>

Total Paid Attendance	341,721
Average Paid Attendance per Performance	3,417

FRONTON REVENUE FROM P-M HANDLE

12% of P-M Handle	\$1,204,042.80
50% of Breaks	18,427.00

Total Fronton Revenue (12.18%)	<u>\$1,222,469.80</u>
--------------------------------------	-----------------------

Total Distributed to Public from P-M Handle. (82.63%)	<u>\$8,291,107.66</u>
--	-----------------------

Distributed to Public from Fronton for Minus Pool44
---	-----

Total Distributed to Public	<u>\$8,291,108.10</u>
-----------------------------------	-----------------------

Percentage of Daily Double to Total Pool	4.44%
Percentage of Quiniela to Total Pool	63.30%
Percentage of Quiniela Exacta to Total Pool	20.35%
Percentage of Breaks to Total Pool	0.37%
Percentage of Partido Win Betting only to Total Pool	0.03%

44

Pool Classification	Amount Wagered	\$50.00 Wagers		\$10.00 Wagers		\$5.00 Wagers		\$3.00 Wagers		\$2.00 Wagers	
		Number	Amount	Number	Amount	Number	Amount	Number	Amount	Number	Amount
Daily Double	\$ 445,954.00									222,977	\$ 445,954.00
Quiniela	6,351,686.00			16,521	\$165,210.00	7,150	\$ 35,750.00			\$3,075,363	6,150,726.00
Quiniela Exacta	2,041,551.00							126,365	\$379,095.00	831,228	1,662,456.00
Win	573,147.00	138	\$ 6,900.00	6,260	62,600.00	21,575	107,875.00			197,886	395,772.00
Place	357,042.00	53	2,650.00	2,470	24,700.00	11,568	57,840.00			135,926	271,852.00
Show	261,352.00	54	2,700.00	1,428	14,280.00	7,236	36,180.00			104,096	208,192.00
Partido Win Betting	2,958.00	6	300.00	58	580.00	90	450.00			814	1,628.00
TOTAL	\$10,033,690.00	251	\$12,550.00	26,737	\$267,370.00	47,619	\$238,095.00	126,365	\$379,095.00	4,568,290	\$9,136,580.00

The Attendance of 2,177 and Pari-Mutuel Handle of \$66,574.00 for Scholarship Fund Day, December 14, 1960, not included in above.

The Attendance of 2,128 and Pari-Mutuel Handle of \$63,929.00 for Charity Day, December 15, 1960, not included in above.

(Closed December 24 and December 31, 1960).

See Exhibit "G" for listing of officers and directors.

THE FRONTON, INC.

Jai-Alai — West Palm Beach

100 Playing Days — December 3, 1960 to April 1, 1961, Incl. — 100 Performances

Pari-Mutuel Handle	\$3,054,020.00
Average Performance	30,540.20
Average Wager per Capita	20.94
(Based on Taxable Admissions)	

STATE REVENUE

3% of P-M Handle (Counties)	\$ 91,620.60
2% of P-M Handle (Old Age Assistance)	61,080.40
50% of Breaks (Old Age Assistance)	6,398.43
Admission Tax (Counties)	14,581.50
	<u>\$ 173,680.93</u>
Occupational Licenses (Counties)	600.50
Total State Revenue	<u>\$ 174,281.43</u>

Total Paid Attendance	145,815
Average Paid Attendance per Performance	1,458

FRONTON REVENUE FROM P-M HANDLE

12% of P-M Handle	\$ 366,482.40
50% of Breaks	6,395.80
Total Fronton Revenue (12.21%)	<u>\$ 372,878.20</u>
Distributed to Public from P-M Handle (82.58%)	\$2,522,042.37
Distributed to Public from Fronton for Minus Pool	2.13
Total Distributed to Public	<u>\$2,522,044.50</u>
Percentage of Daily Double to Total Pool	7.74%
Percentage of Quiniela to Total Pool	60.40%
Percentage of Quiniela Perfecta to Total Pool	16.80%
Percentage of Breaks to Total Pool	0.42%

45

Pool Classification	Amount Wagered	\$5.00 Wagers		\$2.00 Wagers	
		Number	Amount	Number	Amount
Daily Double	\$ 236,462.00			118,231	\$ 236,462.00
Quiniela	1,844,532.00			922,266	1,844,532.00
Quiniela Perfecta	513,106.00			256,553	513,106.00
Win	192,410.00	8,008	\$40,040.00	76,185	152,370.00
Place	143,621.00	4,027	20,135.00	61,743	123,486.00
Show	123,889.00	2,549	12,745.00	55,572	111,144.00
TOTAL	<u>\$3,054,020.00</u>	14,584	<u>\$72,920.00</u>	1,490,550	<u>\$2,981,100.00</u>

The Attendance of 1,033 and Pari-Mutuel Handle of \$21,576.00 for Scholarship Fund Day, January 12, 1961, not included in above.

The Attendance of 780 and Pari-Mutuel Handle of \$17,665.00 for Charity Day, January 5, 1961, not included in above.

(Closed January 3, 1961).

See Exhibit "G" for listing of officers and directors.

GANDY OPERATING COMPANY, INC.

Jai-Alai — Tampa

100 Playing Days — December 10, 1960 to April 10, 1961, Incl. — 100 Performances

Pari-Mutuel Handle	\$3,638,597.00
Average Performance	36,385.97
Average Wager per Capita	22.65
(Based on Taxable Admissions)	

STATE REVENUE

3% of P-M Handle (Counties)	\$ 109,157.91
2% of P-M Handle (Old Age Assistance)	72,771.94
50% of Breaks (Old Age Assistance)	8,051.48
Admission Tax (Counties)	18,275.62
	<u>\$ 208,256.95</u>
Occupational Licenses (Counties)	807.75
Total State Revenue	<u>\$ 209,064.70</u>

Total Paid Attendance	160,664
Average Paid Attendance per Performance	1,607

FRONTON REVENUE FROM P-M HANDLE

12% of P-M Handle	\$ 436,631.64
50% of Breaks	8,050.93
Total Fronton Revenue (12.22%)	<u>\$ 444,682.57</u>
Total Distributed to Public from P-M Handle (82.56%)	<u>\$3,003,933.10</u>
Percentage of Daily Double to Total Pool	6.43%
Percentage of Quiniela to Total Pool	66.33%
Percentage of Quiniela Perfecta to Total Pool	12.34%
Percentage of Breaks to Total Pool	0.44%

46

Pool Classification	Amount Wagered	\$2.00 Wagers		\$1.00 Wagers	
		Number	Amount	Number	Amount
Daily Double	\$ 233,850.00	116,925	\$ 233,850.00		
Quiniela	2,413,544.00	1,206,772	2,413,544.00		
Quiniela Perfecta	448,952.00	224,476	448,952.00		
Win	250,469.00	97,735	195,470.00	54,999	\$ 54,999.00
Place	165,621.00	55,311	110,622.00	54,999	54,999.00
Show	126,161.00	35,581	71,162.00	54,999	54,999.00
TOTAL	\$3,638,597.00	1,736,800	\$3,473,600.00	164,997	\$164,997.00

The Attendance of 745 and Pari-Mutuel Handle of \$17,608.00 for Scholarship Fund Day, December 14, 1960, not included in above.

The Attendance of 772 and Pari-Mutuel Handle of \$21,154.00 for Charity Day, December 15, 1960, not included in above.

(Closed December 24, 1960 and March 31, 1961).

See Exhibit "G" for listing of officers and directors.

MONRO OPERATING COMPANY, INC.

Jai-Alai — Dania

100 Playing Days — December 12, 1960 to April 10, 1961, Incl. — 100 Performances

Pari-Mutuel Handle	\$8,784,654.00*
Average Performance	87,846.54
Average Wager per Capita	24.64
(Based on Taxable Admissions)	

STATE REVENUE

3% of P-M Handle (Counties)	\$ 263,539.62
2% of P-M Handle (Old Age Assistance)	175,693.08
50% of Breaks (Old Age Assistance)	20,119.17
Admission Tax (Counties)	56,624.36
	<u>\$ 515,976.23</u>
Occupational Licenses (Counties)	2,008.25
Total State Revenue	<u>\$ 517,984.48</u>

Total Paid Attendance	356,582
Average Paid Attendance per Performance	3,566

FRONTON REVENUE FROM P-M HANDLE

12% of P-M Handle	\$1,054,158.48
50% of Breaks	20,116.27
Total Fronton Revenue (12.23%)	<u>\$1,074,274.75</u>
Distributed to Public from P-M Handle (82.54%)	\$7,251,027.38
Distributed to Public from Fronton for Minus Pool	2.42
Total Distributed to Public	<u>\$7,251,029.80</u>
Percentage of Daily Double to Total Pool	5.31%
Percentage of Quiniela to Total Pool	58.53%
Percentage of Quiniela Correcta to Total Pool	19.68%
Percentage of Breaks to Total Pool	0.46%

47

Pool Classification	Amount Wagered	\$50.00 Wagers		\$10.00 Wagers		\$5.00 Wagers		\$2.00 Wagers	
		Number	Amount	Number	Amount	Number	Amount	Number	Amount
Daily Double	\$ 466,602.00							233,301	\$ 466,602.00
Quiniela	5,141,696.00			22,741	\$227,410.00			2,457,143	4,914,286.00
Quiniela Correcta	1,728,410.00							864,205	1,728,410.00
Win	768,946.00	255	\$12,750.00	10,486	104,860.00	22,862	\$114,310.00	268,513	537,026.00
Place	424,237.00	75	3,750.00	3,662	36,620.00	10,737	53,685.00	165,091	330,182.00
Show	254,762.00	64	3,200.00	1,424	14,240.00	4,746	23,730.00	106,796	213,592.00
TOTAL	\$8,784,653.00	394	\$19,700.00	38,313	\$383,130.00	38,345	\$191,725.00	4,095,049	\$8,190,098.00

The Attendance of 2,145 and Pari-Mutuel Handle of \$58,512.00 for Scholarship Fund Day, December 14, 1960, not included in above.

The Attendance of 1,723 and Pari-Mutuel Handle of \$46,342.00 for Charity Day, December 15, 1960, not included in above.

(Closed December 24, 1960).

*Tote Pool over \$1.00 January 14, 1961.

See Exhibit "G" for listing of officers and directors.

VOLUSIA JAI-ALAI, INC.

Jai-Alai — Daytona Beach

138 Playing Days — July 1, 1960 to June 30, 1961, Incl. — 177 Performances

Pari-Mutuel Handle	\$4,803,616.00
Average Performance	27,139.07
Average Wager per Capita	26.05
(Based on Taxable Admissions)	

STATE REVENUE

3% of P-M Handle (Counties)	\$ 144,108.48
2% of P-M Handle (Old Age Assistance)	96,072.32
50% of Breaks (Old Age Assistance)	9,807.14
Admission Tax (Counties)	19,117.48
	<u>\$ 269,105.42</u>
Occupational Licenses (Counties)	1,377.50
Total State Revenue	<u>\$ 270,482.92</u>

Total Paid Attendance	184,396
Average Paid Attendance per Performance	1,042

FRONTON REVENUE FROM P-M HANDLE

12% of P-M Handle	\$ 576,433.92
50% of Breaks	9,791.78
Total Fronton Revenue (12.20%)	<u>\$ 586,225.70</u>
Distributed to Public from P-M Handle (82.59%)	\$3,967,402.36
Distributed to Public from Fronton for Minus Pool	14.54
Total Distributed to Public	<u>\$3,967,416.90</u>
Percentage of Daily Double to Total Pool	5.09%
Percentage of Quiniela to Total Pool	56.12%
Percentage of Quiniela Perfecta to Total Pool	25.74%
Percentage of Breaks to Total Pool	0.41%

48

Pool Classification	Amount Wagered	\$5.00 Wagers		\$3.00 Wagers		\$2.00 Wagers	
		Number	Amount	Number	Amount	Number	Amount
Daily Double	\$ 244,570.00					122,285	\$ 244,570.00
Quiniela	2,695,660.00					1,347,830	2,695,660.00
Quiniela Perfecta	1,236,318.00			43,058	\$129,174.00	553,572	1,107,144.00
Win	239,590.00	8,316	\$41,580.00			99,005	198,010.00
Place	209,368.00	4,768	23,840.00			92,764	185,528.00
Show	178,110.00	2,878	14,390.00			81,860	163,720.00
TOTAL	\$4,803,616.00	15,962	\$79,810.00	43,058	\$129,174.00	2,297,316	\$4,594,632.00

The Attendance of 765 and Pari-Mutuel Handle of \$20,148.00 for Scholarship Fund Day, September 7, 1960, not included in above.
 The Attendance of 918 and Pari-Mutuel Handle of \$24,928.00 for Charity Day, June 20, 1961 not included in above.
 Closed September 10, 12, 13, 14 and 15, due to storm damage.
 See Exhibit "G" for listing of officers and directors.

GULFSTREAM PARK RACING ASSOCIATION, INC.

Horse Track — Hallandale

40 Racing Days — March 4, 1961 to April 24, 1961, Incl. — 40 Performances

Pari-Mutuel Handle\$49,454,315.00
 Average Daily Handle 1,236,357.87
 Average Wager per Capita 108.41
 (Based on Taxable Admissions)

Total Paid Attendance 456,172
 Average Daily Paid Attendance 11,404

STATE REVENUE

3% of P-M Handle (Counties)\$ 1,483,629.45
 5% of P-M Handle(Old Age Assistance) 2,472,715.75
 100% of Breaks (Old Age Assistance) 302,969.00
 Admission Tax (Counties) 130,261.22

 \$ 4,389,575.42
 Occupational Licenses (Counties) 3,473.50
 Assumed Names (Counties) 190.00
 Color Registrations (Counties) 83.00

 Total State Revenue\$ 4,393,321.92

TRACK REVENUE FROM P-M HANDLE

7% of P-M Handle\$ 3,461,802.05

 Distributed to Public from P-M Handle (84.39%)\$41,733,198.75

 Percentage of Daily Double to Total Pool..... 10.65%
 Percentage of \$100.00 Wagers to Total Pool..... 10.46%
 Percentage of \$50.00 Wagers to Total Pool..... 14.10%
 Percentage of \$10.00 Wagers to Total Pool..... 24.64%
 Percentage of \$5.00 Wagers to Total Pool..... 17.16%
 Percentage of \$2.00 Wagers to Total Pool..... 33.64%
 Percentage of Breaks to Total Pool..... 0.61%

49

Pool Classification	Amount Wagered	\$100.00 Wagers		\$50.00 Wagers		\$10.00 Wagers		\$5.00 Wagers		\$2.00 Wagers	
		Number	Amount	Number	Amount	Number	Amount	Number	Amount	Number	Amount
Daily Double	\$ 5,265,227.00					108,578	\$ 1,085,780.00	113,729	\$ 568,645.00	1,805,401	\$ 3,610,802.00
Win	26,759,444.00	34,060	\$3,406,000.00	88,394	\$4,419,700.00	789,991	7,899,910.00	885,422	4,427,110.00	3,303,362	6,606,724.00
Place	10,005,867.00	10,091	1,009,100.00	28,658	1,432,900.00	203,611	2,036,110.00	403,545	2,017,725.00	1,755,016	3,510,032.00
Show	7,423,777.00	7,585	758,500.00	22,377	1,118,850.00	116,472	1,164,720.00	295,067	1,475,335.00	1,453,186	2,906,372.00
TOTAL	\$49,454,315.00	51,736	\$5,173,600.00	139,429	\$6,971,450.00	1,218,652	\$12,186,520.00	1,697,763	\$8,488,815.00	8,316,965	\$16,633,930.00

The Attendance of 7,402 and Pari-Mutuel Handle of \$ 870,699.00 for Scholarship Fund Day, April 21, 1961, not included in above.
 The Attendance of 13,034 and Pari-Mutuel Handle of \$1,338,012.00 for Charity Day, April 22, 1961, not included in above.
 The Attendance of 12,592 and Pari-Mutuel Handle of \$1,274,682.00 for Charity Day, (For Hialeah) April 24, 1961, not included in above.
 (Closed March 31, 1961).
 See Exhibit "G" for listing of officers and directors.

HIALEAH RACE COURSE, INC.

Horse Track — Hialeah

40 Racing Days — January 17, 1961 to March 3, 1961, Incl. — 40 Performances

Pari-Mutuel Handle	\$68,008,796.00
Average Daily Handle	1,700,219.90
Average Wager per Capita	112.29
(Based on Taxable Admissions)	

STATE REVENUE

3% of P-M Handle (Counties)	\$ 2,040,263.88
5% of P-M Handle (Old Age Assistance)	3,400,439.80
100% of Breaks (Old Age Assistance)	410,756.75
Admission Tax (Counties)	160,607.08
	\$ 6,012,067.51
Occupational Licenses (Counties)	7,936.25
Assumed Names (Counties)	380.00
Color Registrations (Counties)	175.00
Total State Revenue	\$ 6,020,558.76

Total Paid Attendance	605,660
Average Daily Paid Attendance	15,141

TRACK REVENUE FROM P-M HANDLE

7% of P-M Handle	\$ 4,760,615.72
Distributed to Public from P-M Handle (84.40%)	\$57,396,719.85
Distributed to Public from Track for Minus Pool	57.40
Total Distributed to Public	\$57,396,777.25
Percentage of Daily Double to Total Pool	9.46%
Percentage of \$100.00 Wagers to Total Pool	11.69%
Percentage of \$ 50.00 Wagers to Total Pool	17.78%
Percentage of \$ 20.00 Wagers to Total Pool	0.25%
Percentage of \$ 10.00 Wagers to Total Pool	24.55%
Percentage of \$ 5.00 Wagers to Total Pool	15.22%
Percentage of \$ 2.00 Wagers to Total Pool	30.51%
Percentage of Breaks to Total Pool	0.60%

50

Pool Classification	Amount Wagered	\$100.00 Wagers		\$50.00 Wagers		\$20.00 Wagers		\$10.00 Wagers		\$5.00 Wagers		\$2.00 Wagers	
		Number	Amount	Number	Amount	Number	Amount	Number	Amount	Number	Amount	Number	Amount
Daily Double	\$ 6,433,121.							150,922	\$ 1,509,220.	153,925	\$ 769,625.	2,077,138	\$ 4,154,276.
Win	37,998,070.	55,087	\$5,508,700.	154,804	\$ 7,740,200.	5,440	\$108,800.	1,077,943	10,779,430.	1,086,116	5,430,580.	4,215,180	8,430,360.
Place	13,647,011.	14,181	1,418,100.	51,352	2,567,600.	1,818	36,360.	277,683	2,776,830.	479,095	2,395,475.	2,226,323	4,452,646.
Show	9,930,594.	10,250	1,025,000.	35,708	1,785,400.	1,312	26,240.	162,770	1,627,700.	350,384	1,751,920.	1,857,167	3,714,334.
TOTAL	\$68,008,796.	79,518	\$7,951,800.	241,864	\$12,093,200.	8,570	\$171,400.	1,669,318	\$16,693,180.	2,069,520	\$10,347,600.	10,375,808	\$20,751,616.

See Exhibit "G" for listing of officers and directors.

SUNSHINE PARK RACING ASSOCIATION, INC.

Horse Track — Oldsmar

50 Racing Days — January 13, 1961 to March 25, 1961, Incl. — 50 Performances

Pari-Mutuel Handle _____ \$9,222,946.00*
 Average Daily Handle _____ 184,458.92
 Average Wager per Capita _____ 74.20
 (Based on Taxable Admissions)

Total Paid Admissions _____ 124,294
 Average Daily Paid Attendance _____ 2,486

STATE REVENUE

3% of P-M Handle (Flat Rate of \$3,750.00 per Day) (Counties) _____ \$ 187,500.00
 5% of P-M Handle (Flat Rate of \$1,250.00 per Day) (Old Age Assistance) _____ 62,500.00
 100% Breaks (Old Age Assistance) _____ 57,504.85⁶⁵
 Admissions Tax (Counties) _____ 21,034.61

 _____ \$ 328,539.26
 Occupational Licenses (Counties) _____ 8,559.75
 Assumed Names (Counties) _____ 250.00
 Color Registrations (Counties) _____ 312.00

 Total State Revenue _____ \$ 337,661.01

TRACK REVENUE FROM P-M HANDLE

Track Share of P-M Handle after Flat Rate to State is Deducted (12.29%) _____ \$1,133,441.90
 Distributed to Public from P-M Handle (84.38%) _____ \$7,781,999.45

 Percentage of Daily Double to Total Pool _____ 9.43%
 Percentage of \$50.00 Wagers to Total Pool _____ 7.71%
 Percentage of \$10.00 Wagers to Total Pool _____ 23.31%
 Percentage of \$ 5.00 Wagers to Total Pool _____ 18.83%
 Percentage of \$ 2.00 Wagers to Total Pool _____ 50.15%
 Percentage of Breaks to Total Pool _____ 0.62%

51

Pool Classification	Amount Wagered	\$50.00 Wagers		\$10.00 Wagers		\$5.00 Wagers		\$2.00 Wagers	
		Number	Amount	Number	Amount	Number	Amount	Number	Amount
Daily Double	\$ 869,398.00								
Win	4,490,896.00	8,586	\$429,300.00	131,399	\$1,313,990.00	205,500	\$1,027,500.00	860,053	1,720,106.00
Place	2,240,868.00	3,725	186,250.00	52,246	522,460.00	90,004	450,020.00	541,069	1,082,138.00
Show	1,621,684.00	1,911	95,550.00	31,325	313,250.00	51,846	259,230.00	476,827	953,654.00
TOTAL	\$9,222,846.00	14,222	\$711,100.00	214,970	\$2,149,700.00	347,350	\$1,736,750.00	2,312,648	\$4,625,296.00

The Attendance of 1,274 and Pari-Mutuel Handle of \$112,397.00 for Scholarship Fund Day, January 20, 1961, not included in above.
 The Attendance of 1,599 and Pari-Mutuel Handle of \$114,368.00 for Charity Day, January 18, 1961, not included in above.
 (Did not operate on Mondays).

*Tote Pool over \$100.00 January 27, 1961.

See Exhibit "G" for listing of officers and directors.

TROPICAL PARK, INC.

Horse Track — Coral Gables

40 Racing Days — November 24, 1960 to January 16, 1961, Incl.—40 Performances

Pari-Mutuel Handle\$32,528,658.00
 Average Daily Handle 813,216.45
 Average Wager per Capita 123.77

(Based on Taxable Admissions)

STATE REVENUE

3% of P-M Handle (Counties)\$ 975,859.74
 5% of P-M Handle (Old Age Assistance) 1,626,432.90
 100% of Breaks (Old Age Assistance) 200,286.85
 Admission Tax (Counties) 73,230.35

\$ 2,875,809.84

Occupational Licenses (Counties) 34,185.25
 Assumed Names (Counties) 2,550.00
 Color Registrations (Counties) 979.00

Total State Revenue \$ 2,913,524.09

Total Paid Attendance 262,811
 Average Daily Paid Attendance 6,570

TRACK REVENUE FROM P-M HANDLE

7% of P-M Handle\$ 2,277,006.06

Distributed to Public from P-M Handle (84.39%)\$27,449,072.45
 Distributed to Public from Track for Minus Pool 859.20

Total Distributed to Public \$27,449,931.65

Percentage of Daily Double to Total Pool 9.40%
 Percentage of \$100.00 Wagers to Total Pool 8.98%
 Percentage of \$ 50.00 Wagers to Total Pool 18.05%
 Percentage of \$ 10.00 Wagers to Total Pool 26.42%
 Percentage of \$ 5.00 Wagers to Total Pool 16.14%
 Percentage of \$ 2.00 Wagers to Total Pool 30.41%
 Percentage of Breaks to Total Pool 0.62%

52

Pool Classification	Amount Wagered	\$100.00 Wagers		\$50.00 Wagers		\$10.00 Wagers		\$5.00 Wagers		\$2.00 Wagers	
		Wagered Number	Amount	Number	Amount	Number	Amount	Number	Amount	Number	Amount
Daily Double	3,055,264.00			4,697	\$ 234,850.00	72,915	\$ 729,150.00			1,045,632	\$2,091,264.00
Win	18,422,743.00	20,656	\$2,065,600.00	72,929	3,646,450.00	545,085	5,450,850.00	598,811	\$2,994,055.00	2,132,894	4,265,788.00
Place	6,513,403.00	4,993	499,300.00	23,669	1,183,450.00	149,997	1,499,970.00	265,169	1,325,845.00	1,002,419	2,004,838.00
Show	4,537,248.00	3,569	356,900.00	16,151	807,550.00	91,342	913,420.00	185,730	928,650.00	765,364	1,530,728.00
TOTAL	\$32,528,658.00	29,218	\$2,921,800.00	117,446	\$5,872,300.00	859,339	\$8,593,390.00	1,049,710	\$5,248,550.00	4,946,309	\$9,892,618.00

The Attendance of 14,965 and Pari-Mutuel Handle of \$918,898.00 for Charity Day November 24, 1960, not included in above.
 The Attendance of 8,107 and Pari-Mutuel Handle of \$760,492.00 for Scholarship Fund Day, November 26, 1960, not included in above.
 The Attendance of 6,832 and Pari-Mutuel Handle of \$668,162.00 for Scholarship Fund Day, (for Hialeah) Nov. 30, 1960, not incl. in above.
 Closed November 25, 28 and 29.
 See Exhibit "G" for listing of officers and directors.

