

*56th
Annual Report*



*Division of Pari-Mutuel Wagering
of the
Department of Business Regulation
For the Fiscal Year ending June 30, 1987*



STATE OF FLORIDA

DEPARTMENT OF BUSINESS REGULATION

THE JOHNS BUILDING
725 SOUTH BRONOUGH STREET
TALLAHASSEE, FLORIDA 32399-1000

Bob Martinez, Governor
Van B. Poole, Secretary

November 2, 1987

The Honorable Bob Martinez
Governor
The Capitol
Tallahassee, Florida

The Honorable John W. Vogt
President, The Florida Senate
Senate Office Building
Tallahassee, Florida

The Honorable Jon Mills
Speaker, House of Representatives
House Office Building
Tallahassee, Florida

Gentlemen:

In compliance with Sections 20.16(4)(d) and 550.02(1), Florida Statutes, we are pleased to submit the 56th Annual Report of pari-mutuel wagering in the State of Florida covering the fiscal year ended June 30, 1987.

Pari-mutuel wagering during fiscal year 1986-87 provided the State revenues of \$129.4 million, a 5.2% increase over the previous fiscal year. Wagers placed at horse tracks, dog tracks and jai-alai frontons in Florida totaled over \$1.9 billion representing a 5.8% increase. Both were records for the State and indicate continued strength and vitality in this important industry.

This report is submitted jointly by the Department of Business Regulation, Division of Pari-Mutuel Wagering and the Florida Pari-Mutuel Commission.

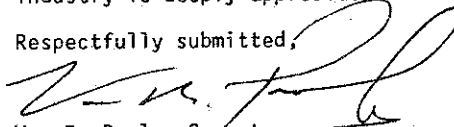
The Florida Pari-Mutuel Commission awards racing dates, hears appeal of Department decisions which relate to revocation or suspension of a pari-mutuel operating license and approves expenditures of capital improvement projects at the tracks and frontons which are funded through special withholdings from the wagers placed. The Commission also may recommend rule changes to the Division.

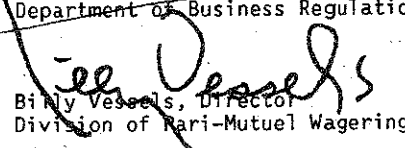
The Division monitors and regulates Florida's pari-mutuel industry, collects and audits pari-mutuel tax collections and issues licenses to all persons affiliated with pari-mutuel activities.

The Division and Commission are funded primarily from a daily license fee based on the number of races or games conducted at each facility. Total revenues for the operating funds were \$5.9 million and the actual cost of this program was \$5.5 million.

The continued support and cooperation which has been received from you, your staffs, and the pari-mutuel industry is deeply appreciated.

Respectfully submitted,


Van B. Poole, Secretary
Department of Business Regulation


Billy Vessels, Director
Division of Pari-Mutuel Wagering


Joseph Priole-Rodriguez
Chairman, Florida Pari-Mutuel Commission

VBP:cjk

OVERVIEW:

This annual report on pari-mutuel wagering in Florida covers the fiscal year which began on July 1, 1986 and ended on June 30, 1987. This is the 56th annual report in the series. The 1st annual report was issued for fiscal year 1931-32, the first year of legalized pari-mutuel wagering in Florida.

That year there were 462 operating days. Total handle was \$17.4 million, and State revenue was \$0.7 million. This year, total handle was nearly \$2.0 billion, and State revenue was over \$129.4 million from 3,821 operating days.

In Florida pari-mutuel wagering is authorized for thoroughbred horse racing, harness horse racing, quarter horse and Arabian horse racing, dog racing and jai-alai. Florida is one of the primary pari-mutuel states. It is the nation's leading state in both dog racing and jai-alai as well as a major horse racing state.

This annual report which is required by Florida law is intended to inform the Governor, the Legislature, the industry and other interested parties on pari-mutuel wagering activities. The report is organized in three sections:

1. **Introductory Section** - This section provides information regarding the organization of the Division of Pari-Mutuel Wagering and the Florida Pari-Mutuel Commission.
2. **Statistical Section** - This section provides a summary of racing activities, multiple year comparative trend data, and the data concerning physical, economic, social and political characteristics of the pari-mutuel industry. The statistical section is intended to provide the reader with a broad perspective on the State's pari-mutuel activities.
3. **Financial Section** - This section provides the official financial statements of the Division of Pari-Mutuel Wagering and footnotes.
4. **Tax Structure** - This section provides charts which illustrate a breakdown of the takeout.

As you will see in the report which follows, Florida's pari-mutuel industry continues to be healthy, showing continued popularity and maintaining its important contribution to Florida's economy and tax base. Additionally, new legislation passed during the 1987 Session became law authorizing additional operating days for many permittees. The additional operating days will increase the total number of authorized days by 26.7% in fiscal year 1987-88 which will ensure continued growth in pari-mutuel wagering in the State.

DEPARTMENT OF BUSINESS REGULATION
 DIVISION OF PARI-MUTUEL WAGERING
 COMPREHENSIVE ANNUAL FINANCIAL REPORT
 FISCAL YEAR ENDED JUNE 30, 1987

Table of Contents

INTRODUCTORY SECTION

Division Organization	1
Flowchart	4

STATISTICAL SECTION

Summary of Racing Revenues-Regular Performances	5
Detail of Regular Performance Revenues	6
Summary of Racing Revenues-Charity Performances	9
Detail of Charity Performance Revenues	10
Summary of Racing Revenues	12
Thoroughbred Racing-Comparative data	13
Harness Racing-Comparative data	14
Quarter Horse Racing-Comparative data	14
Jai-Alai-Comparative data	15
Greyhound Racing-Comparative data	16
Summary of Additional Racing Days for Charities purposes	18
Various statistical data	20
Revenues and other data by Association	22

FINANCIAL SECTION

Combined Balance Sheet	41
Combining Statement of Revenue	42
Expenditures and Changes in Fund Balance	45
Supplemental Schedules	45
Footnotes	48

TAX STRUCTURE

Narrative	50
Betting Dollar	51
Tax Structure Charts	52

INTRODUCTORY SECTION

DEPARTMENT OF BUSINESS REGULATION

SECRETARY

Secretary Van B. Poole

PARI-MUTUEL COMMISSIONERS

J. Priede-Rodriguez, Chairman

L. Erich Braun, Member

Berton Brown, Member

James A. McGrath, Member

Armer E. White, Member

DIVISION OF PARI-MUTUEL WAGERING

Billy Vessels, Director

Holly Magursky, Assistant Director

Tony Fasulo, Chief of Operations

Joya Frisco, Chief of Revenue Services

Jane Foos, Chief of Laboratory Services

Tony Fasulo, (Acting) Chief of Investigations

THE COMMISSION

The Pari-Mutuel Commission holds the legislative authority for awarding racing dates, hearing appeals of Department decisions which relate to revocation or suspension of a pari-mutuel operating license, and approving expenditures of the permittees' special capital improvement funds. It also may recommend rule changes to the Division. During this year Mr. Joseph Priede-Rodriguez served as chairman of the commission. The current members of the Commission are Mr. L. Erich Braun, Mr. Berton Brown, Mr. James A. McGrath and Mr. Armer E. White. The Commission met six times this year in order to consider the above referenced matters.

THE DIVISION OF PARI-MUTUEL WAGERING

The Division of Pari-Mutuel Wagering is a division of the Department of Business Regulation within the Executive Branch of Florida's government. It is charged with the regulation of Florida's pari-mutuel industries under Chapters 550 and 551 of the Florida Statutes, as well as collecting and safeguarding revenues due to the state. In its 56 years of operation, the Division has grown from the old racing commission staff to a large professional organization regulating a highly complex and sophisticated industry.

The structure of the Division best demonstrates how it regulates pari-mutuel wagering. The legislature funds the Division from the Pari-Mutuel Operations Trust Fund, which is comprised of the daily license fees (a per-race fee; see "Tax Structure") and other miscellaneous revenues.

Its operating budget is divided among four bureaus: Operations, Investigations, Laboratory Services, and Revenue Services, under the management of the Office of the Director. Each Bureau focuses upon a different aspect of the industry in our efforts to protect state revenues and maintain the public's confidence in the integrity of the sport.

BUREAU OF OPERATIONS

The Bureau of Operations is responsible for overseeing the network of state offices located in every pari-mutuel plant, as well as the issuance of more than 34,000 occupational licenses every year. The state offices are divided into four regions, each under the supervision of a regional supervisor. As many as 250 temporary and seasonal personnel may be on staff during the peak season. They serve as chief inspectors, clerks, detention area staff, veterinarians, judges and stewards. These employees, under the direct supervision of the Bureau of Operations, see to it that the day-to-day operation of races or games are conducted in accordance with Florida's rules. Judges or stewards conduct hearings under Florida's Administrative Procedures Act for violation of the rules and rendered more than 600 decisions last year. More serious violations are referred to the Division Director for determination. Operations staff also collect urine and blood samples from horses and dogs for examination by the Bureau of Laboratory Services. Many of the seasonal personnel are highly skilled and have been employed for more than 20 years.

The State office staff received and processed most of the 34,114 occupational license applications and fees received last year. The computerization of the occupational licensing program allows instant retrieval of eligibility information and current license status. The computer system also allowed us to mail pre-printed renewal applications to all thoroughbred, harness, quarterhorse and greyhound owners and trainers. Response was encouraging saving time and money for both licensees and the state.

BUREAU OF INVESTIGATIONS

The Bureau of Investigations examines possible rule or criminal violations which may occur in the pari-mutuel industry. Case investigations range in complexity from the investigation of falsified license applications to race fixing and drug violations within the industry. Among the largest investigations conducted by the Bureau are those concerning the issuance of a new or the transfer of an existing permit. These investigations require an in-depth examination of the applicant's personal and financial background in order to insure compliance with Chapter 550.181, Florida Statutes. Ultimately, cases investigated by the Bureau may result in the issuance of administrative charges and hearings before either the Division Director or a designated hearing officer. Assessed penalties can range from the levying of fines and suspensions to the revocation of occupational licenses and exclusion from participation in the industry. All Division rulings are honored within the United States, Canada, Mexico and Puerto Rico, pursuant to the reciprocity agreement of the National Association of State Racing Commissioners.

BUREAU OF LABORATORY SERVICES

The primary function of the Bureau of Laboratory Services is to analyze blood or urine samples from racing animals to detect and identify micro-quantities of drugs which might affect the outcome of a race. Because of the increasing sophistication of equine and canine medication, as well as the importation of drugs from other countries, the laboratory maintains an ongoing research and development program to stay current with the advanced toxicology. The Laboratory also helps fund a research program at the University of Florida College of Veterinary Medicine. Quality control is monitored by our participation in the National Association of State Racing Commissioners Quality Assurance program at both Cornell and Ohio State Universities. During the 1986-87 fiscal year, the Bureau of Laboratory Services received approximately 47,000 official urine and blood samples which resulted in 96,000 analyses. Fifty-five violations were detected and submitted to the Director's office for action. The constant monitoring of samples by the Laboratory serves as an effective deterrent to the illegal drugging of racing animals in Florida.

BUREAU OF REVENUE SERVICES

The Bureau of Revenue Services is the tax collection arm of the Division. As such, its functions are divided into three major activities: field operations, compliance, and accounting audit. Each activity serves to account for and safeguard state revenues.

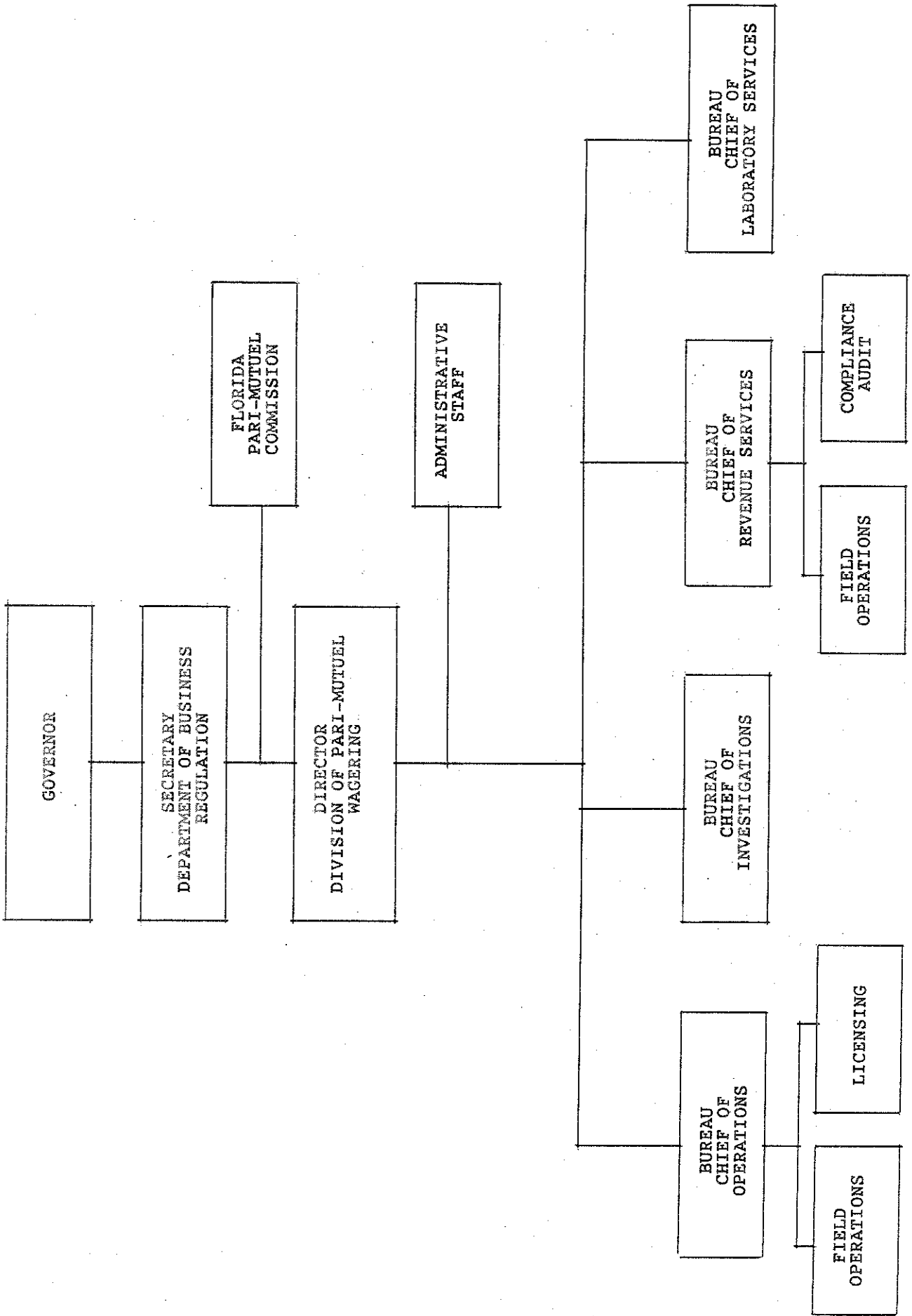
Two auditors are assigned to each track or fronton to assure that every pari-mutuel calculation is accurate, the pool is fairly paid out to the public, and that Florida Statutes and rules are enforced in the calculation of admissions, outstanding tickets, fees generated by each pari-mutuel performance, and taxes due to the state.

Revenue Collected By Geographical Location For Fiscal Year 1986-87

<u>County</u>	<u>Handle</u>	<u>Attendance</u>	<u>State Revenues</u>	<u>Percentage</u>
BREVARD COUNTY	\$ 15,577,869	207,209	\$ 1,157,839	0.89 %
BROWARD COUNTY	392,991,853	3,112,037	21,370,316	16.51 %
CLAY COUNTY	47,515,562	398,291	3,720,549	2.87 %
DADE COUNTY	611,461,138	3,981,981	33,850,329	26.15 %
DUVAL COUNTY	71,703,010	633,683	5,574,059	4.31 %
ESCAMBIA COUNTY	20,318,331	235,505	1,623,466	1.25 %
GADSDEN COUNTY	12,115,021	127,890	832,207	0.64 %
HILLSBOROUGH COUNTY	181,269,396	1,763,864	12,208,270	9.43 %
JEFFERSON COUNTY	18,506,148	178,239	1,471,675	1.14 %
LEE COUNTY	48,353,670	536,233	4,162,207	3.22 %
MARION COUNTY	12,964,276	157,684	955,814	0.74 %
MONROE COUNTY	5,509,193	61,966	340,317	0.26 %
PALM BEACH COUNTY	109,484,522	1,107,521	9,031,883	6.98 %
PINELLAS COUNTY	109,128,429	990,963	8,891,125	6.87 %
ST. JOHN'S COUNTY	12,507,355	96,918	1,014,181	0.78 %
ST. LUCIE COUNTY	23,339,756	277,263	1,717,363	1.33 %
SARASOTA COUNTY	53,146,049	462,407	4,493,433	3.47 %
SEMINOLE COUNTY	126,417,024	1,194,162	10,436,639	8.06 %
VOLUSIA COUNTY	63,605,490	792,646	5,076,605	3.92 %
WASHINGTON COUNTY	18,689,812	189,274	1,520,756	1.18 %
GRAND TOTAL	<u>\$1,954,603,904</u>	<u>16,505,736</u>	<u>\$129,449,033</u>	<u>100 %</u>

The compliance audit staff must review track activity from a post-meet perspective. Teams of tax auditors review as many aspects of those state-regulated activities as possible. All of this information is brought together by the Bureau of Revenue Services, which also produces most of the data for this report each year.

Audited financial statements and reports also are submitted by each association. Collections from all sources during the year totaled \$129,449,033 as noted on the summary of Racing Revenues (Financial Section).



STATISTICAL SECTION

SUMMARY OF RACING REVENUES FOR REGULAR PERFORMANCES

Fiscal Year 1986-87

Greyhound Racing Associations

	Total Tax To State (1)	Total Track Revenues From P/M Handle	Paid to Public	Total Collections Promotions Trust Funds	Pari-Mutuel Handle
Associated Outdoor Clubs, Inc.	\$ 7,435,908	\$ 11,102,466	\$ 72,982,814	\$	\$ 91,521,188
Bayard Raceways, Inc.	930,564	1,491,405	10,085,386		12,507,355
Berenson's Key West Greyhound Track	298,190	808,275	4,402,728		5,509,193
Biscayne Kennel Club, Inc.	12,022,157	17,699,533	117,372,868		147,094,558
Bonita Ft. Myers Corporation	3,913,203	5,837,874	38,602,593		48,353,670
Investment Corp. of Palm Beach	5,530,186	8,291,869	54,464,611		68,286,666
Investment Corp. of South Florida	9,031,948	13,164,990	88,258,012		110,454,950
Jacksonville Kennel Club, Inc.	5,384,344	8,500,359	57,818,307		71,703,010
Jefferson County Kennel Club, Inc.	1,383,391	2,376,584	14,746,173		18,506,148
Orange Park Kennel Club, Inc.	3,577,938	5,624,517	38,313,107		47,515,562
Pensacola Greyhound Track, Inc.	1,504,942	2,593,537	16,219,852		20,318,331
St. Petersburg Kennel Club, Inc.	8,455,300	12,650,088	88,023,041		109,128,429
Sanford Orlando Kennel Club, Inc.	4,771,573	7,249,386	47,244,458		59,265,417
Sarasota Kennel Club, Inc.	4,271,690	6,495,337	42,379,022		53,146,049
Seminole Racing, Inc.	2,950,922	4,598,396	29,624,735		37,174,053
Seminole Racing, Inc. d/b/a Daytona Beach Kennel Club	2,881,318	4,499,923	29,176,343		36,557,585
Washington County Kennel Club, Inc.	1,392,134	2,393,895	14,903,782		18,689,812
West Flagler Associates, Ltd.	3,339,026	4,944,145	32,658,917		40,942,088
Total Greyhound Tracks	\$ 79,074,734	\$ 120,322,579	\$ 797,276,751	\$	\$ 996,674,064

Jai-Alai Frontons

Dania Jai-Alai Division	\$ 3,726,998	\$ 6,587,897	\$ 41,164,643	\$	\$ 51,479,538
Florida Jai-Alai, Inc.	2,177,264	3,979,386	23,820,904		29,977,554
Fort Pierce Jai-Alai, Inc.	1,618,127	3,176,984	18,544,645		23,339,756
Golden Crown Corporation	780,249	1,710,122	9,624,650		12,115,021
Miami Jai-Alai	4,463,328	7,946,417	49,441,085		61,850,830
Ocala Jai-Alai	868,390	1,793,314	10,302,572		12,964,276
Sports Palace, Inc.	1,076,860	2,122,552	12,378,457		15,577,869
Summer Jai-Alai	3,610,552	6,500,956	40,316,233		50,427,741
Summersport Enterprises, Ltd.	2,700,716	4,761,430	29,772,176		37,234,322
Tampa Jai-Alai	3,871,917	6,681,131	40,857,542		51,410,590
The Fronton, Inc.	3,062,232	5,388,226	32,747,398		41,197,856
Volusia Jai-Alai, Inc.	1,894,556	3,652,011	21,501,338		27,047,905
Total Jai-Alai Frontons	\$ 29,851,189	\$ 54,300,426	\$ 330,471,643	\$	\$ 414,623,258

Thoroughbred Racing Associations

Calder Race Course, Inc.	\$ 3,681,596	\$ 26,678,959	\$ 112,495,125	\$	\$ 143,660,467
Gulfstream Park Racing Association, Inc.	3,306,410	19,441,133	94,298,217		117,666,970
Hialeah, Inc.	3,115,317	17,831,413	80,140,129		101,577,793
Tampa Bay Downs, Inc.	126,148	7,959,956	29,994,187		38,337,618
Tropical Park, Inc.	1,730,552	11,890,306	51,926,665		65,907,661
Total Thoroughbred Tracks	\$ 11,960,023	\$ 83,801,767	\$ 368,854,323	\$ 2,534,396	\$ 467,150,509

Harness Racing Associations

Pompano Park Associates, Ltd.-Harness	\$ 1,188,388	\$ 13,171,525	\$ 52,587,145	\$	\$ 67,290,552
Quarter Horse Racing Associations					
Pompano Park Associates, Ltd.-Quarter Horse	\$ 51,400	\$ 1,768,185	\$ 6,921,850	\$	\$ 8,865,521

TOTAL FOR ALL TRACKS AND FRONTONS

(1) Net of Tax on Attendance

\$ 122,125,734

\$ 273,364,482

\$ 1,556,111,713

\$ 3,001,975

\$ 1,954,603,904

Racing Revenues for Regular Performances
Fiscal Year 1986-87

	Tax On Attendance	Daily License Fee	Tax On Handle	State 50% Surtax	Breaks	Total Tax To State
Greyhound Racing Associations						
Associated Outdoor Clubs, Inc.	\$ 103,618	\$ 162,320	\$ 6,659,211	\$ 418,922	\$ 195,455	\$ 7,539,526
Bayard Raceways, Inc.	12,526	49,920	859,359		21,285	943,090
Berenson's Key West Greyhound Track	7,436	75,700	190,084	16,981	15,425	305,626
Biscayne Kennel Club, Inc.	130,697	249,680	10,723,186	679,025	370,266	12,152,854
Bonita Ft. Myers Corporation	82,337	165,360	3,372,778	203,754	171,311	3,995,540
Investment Corp. Of Palm Beach	73,105	165,360	4,887,687	303,780	173,359	5,603,291
Investment Corp Of South Florida	104,063	163,280	8,096,276	499,261	273,131	9,136,011
Jacksonville Kennel Club, Inc.	78,276	229,840	5,029,529		124,975	5,462,620
Jefferson County Kennel Club, Inc.	22,695	137,600	1,119,947	88,843	37,001	1,406,086
Orange Park Kennel Club, Inc.	49,435	148,720	3,339,482		89,736	3,627,373
Pensacola Greyhound Track, Inc.	25,813	164,320	1,190,413	93,806	56,403	1,530,755
St. Petersburg Kennel Club, Inc.	142,196	161,200	7,999,260		294,840	8,597,496
Sanford Orlando Kennel Club, Inc.	70,425	165,360	4,202,071	270,746	133,396	4,841,998
Sarasota Kennel Club, Inc.	58,029	159,840	3,748,400	241,983	121,467	4,329,719
Seminole Racing, Inc.	55,680	163,920	2,528,827	171,954	86,221	3,006,602
Seminole Racing, Inc. d/b/a						
Daytona Beach Kennel Club, Inc.	53,357	195,520	2,421,177	164,924	99,697	2,934,675
Washington County Kennel Club, Inc.	23,751	149,360	1,107,686	84,260	50,828	1,415,885
West Flagler Associates, Ltd.	31,996	78,080	2,969,099	189,387	102,460	3,371,022
Total Greyhound Tracks	\$ 1,125,435	\$ 2,785,380	\$ 70,444,472	\$ 3,427,626	\$ 2,417,256	\$ 80,200,169
Jai-Alai Frontons						
Dania Jai-Alai Division	\$ 81,949	\$ 165,360	\$ 3,372,822	\$ 114,553	\$ 74,263	\$ 3,808,947
Florida Jai-Alai, Inc.	32,109	193,440	1,789,801	150,821	43,202	2,209,373
Fort Pierce Jai-Alai	44,350	211,120	1,263,784	111,919	31,304	1,662,477
Golden Crown Corporation	16,626	89,050	616,991	58,937	15,271	796,875
Miami Jai-Alai	97,916	165,360	4,109,185	123,419	65,364	4,561,244
Ocala Jai-Alai	34,665	138,320	649,243	62,245	18,582	903,055
Sports Palace, Inc.	26,937	153,920	827,354	74,214	21,372	1,103,797
Summer Jai-Alai	74,808	165,360	3,298,144	95,945	51,103	3,685,360
Summersport Enterprises, Ltd.	52,295	108,160	2,459,036	80,665	52,855	2,753,011
Tampa Jai-Alai	82,782	195,520	3,339,372	260,071	76,954	3,954,699
The Fronton, Inc.	45,900	165,360	2,642,823	195,754	58,295	3,108,132
Volusia Jai-Alai, Inc.	47,830	206,960	1,518,187	127,342	42,067	1,942,386
Total Jai-Alai Frontons	\$ 638,167	\$ 1,957,930	\$ 25,886,742	\$ 1,455,885	\$ 550,632	\$ 30,489,356
Thoroughbred Racing Associations						
Calder Race Course, Inc.	\$ 166,565	\$ 118,900	\$ 3,562,695			\$ 3,848,161
Gulfstream Park Racing Association, Inc.	164,440	66,900	3,239,510			3,470,850
Hialeah, Inc.	130,489	52,000	3,063,317			3,245,806
Tampa Bay Downs, Inc.	81,371	93,800	32,348			207,519
Tropical Park, Inc.	72,877	50,600	1,679,953			1,803,429
Total Thoroughbred Tracks	\$ 615,742	\$ 382,200	\$ 11,577,823			\$ 12,575,765
Harness Racing Associations						
Pompano Park Associates, Ltd.-Harness	\$ 116,712	\$ 155,800	\$ 1,032,588			\$ 1,305,100
Quarter Horse Racing Associations						
Pompano Park Associates, Ltd-Quarter Horse	\$ 11,662	\$ 51,400				\$ 63,062
TOTAL ALL TRACKS AND FRONTONS	\$ 2,507,718*	\$ 5,332,710	\$ 108,941,625*	\$ 4,883,511*	\$ 2,967,888*	\$ 124,633,452

* See Note A

Racing Revenues for Regular Performances - Continued
Fiscal Year 1986-87

	Track Commission	Owners' Awards	Withheld For Purses	Withheld For Capital Improvements	Total Track Revenues From P/M Handle
Greyhound Racing Associations					
Associated Outdoor Clubs, Inc.	\$ 9,621,027		\$ 526,840	\$ 954,599	\$ 11,102,466
Bayard Raceways, Inc.	1,339,782		75,812	75,811	1,491,405
Berenson's Key West Greyhound Track	723,370		33,962	50,943	808,275
Biscayne Kennel Club, Inc.	15,458,726		780,892	1,459,915	17,699,533
Bonita Ft. Myers Corporation	5,134,942		249,590	453,342	5,837,874
Investment Corp. of Palm Beach	7,208,369		384,576	698,924	8,291,869
Investment Corp. of South Florida	11,575,792		544,969	1,044,229	13,164,990
Jacksonville Kennel Club, Inc.	7,636,733		431,813	431,813	8,500,359
Jefferson County Kennel Club, Inc.	2,070,565		108,270	197,749	2,376,584
Orange Park Kennel Club, Inc.	5,056,236		284,140	284,141	5,624,517
Pensacola Greyhound Track, Inc.	2,296,294		101,458	195,785	2,593,537
St. Petersburg Kennel Club, Inc.	11,431,553		603,442	615,093	12,650,088
Sanford Orlando Kennel Club, Inc.	6,279,828		345,190	624,368	7,249,386
Sarasota Kennel Club, Inc.	5,638,905		303,886	552,546	6,495,337
Seminole Racing, Inc.	3,987,404		217,496	393,496	4,598,396
Seminole Racing, Inc. d/b/a Daytona Beach Kennel Club	3,949,345		192,096	358,482	4,499,923
Washington County Kennel Club, Inc.	2,099,749		104,658	189,488	2,393,895
West Flagler Associates, Ltd.	4,309,700		222,530	411,915	4,944,145
Total Greyhound Tracks	\$ 105,818,320		\$ 5,511,620	\$ 8,992,639	\$ 120,322,579
Jai-Alai Frontons					
Dania Jai-Alai Division	\$ 6,204,071		\$ 383,826	\$ 383,826	\$ 6,587,897
Florida Jai-Alai, Inc.	3,693,469		285,917	285,917	3,979,386
Fort Pierce Jai-Alai, Inc.	2,946,221		230,763	230,763	3,176,984
Golden Crown Corporation	1,591,181		118,941	118,941	1,710,122
Miami Jai-Alai	7,453,160		493,257	493,257	7,946,417
Ocala Jai-Alai	1,668,430		124,884	124,884	1,793,314
Sports Palace, Inc.	1,968,221		154,331	154,331	2,122,552
Summer Jai-Alai	6,099,588		401,368	401,368	6,500,956
Summersport Enterprises, Ltd.	4,481,923		279,507	279,507	4,761,430
Tampa Jai-Alai	6,193,011		488,120	488,120	6,681,131
The Fronton, Inc.	4,990,746		397,480	397,480	5,388,226
Volusia Jai-Alai, Inc.	3,391,837		260,174	260,174	3,652,011
Total Jai-Alai Frontons	\$ 50,681,858		\$ 3,618,568	\$ 3,618,568	\$ 54,300,426
Thoroughbred Racing Associations					
Calder Race Course, Inc.	\$ 12,216,474	\$ 861,356	\$ 12,416,807	\$ 1,184,322	\$ 26,678,959
Gulfstream Park Racing Association, Inc.	9,738,996		8,733,279	968,858	19,441,133
Hialeah, Inc.	8,063,259	656,772	8,275,107	836,275	17,831,413
Tampa Bay Downs, Inc.	4,068,276	235,620	3,346,562	309,498	7,959,956
Tropical Park, Inc.	5,545,134	434,077	5,364,518	546,577	11,890,306
Total Thoroughbred Tracks	\$ 39,632,139	\$ 2,187,825	\$ 38,136,273	\$ 3,845,530	\$ 83,801,767
Harness Racing Associations					
Pompano Park Associates, Ltd-Harness	\$ 6,295,887		\$ 6,296,104	\$ 579,534	\$ 13,171,525
Quarter Horse Racing Associations					
Pompano Park Associates, Ltd-Quarter Horse	\$ 1,036,633		\$ 652,895	\$ 78,657	\$ 1,768,185
TOTAL FOR ALL TRACKS AND FRONTONS	\$ 203,464,837	\$ 2,187,825	\$ 50,596,892	\$ 17,114,928	\$ 273,364,482

**Racing Revenues for Regular Performances - Continued
Collections-For-Promotional Trust Fund
Fiscal Year 1986-87**

	1% Quarter Horse P/M Handle	Breaks	Total Promotional Funds
<u>Thoroughbred Racing Associations</u>			
Calder Race Course, Inc.	\$	\$ 804,787	\$ 804,787
Gulfstream Park Racing Association, Inc.		621,210	621,210
Hialeah, Inc.		490,934	490,934
Tampa Bay Downs, Inc.	7,533	* 249,794	257,327
Tropical Park, Inc.		360,138	360,138
Total Thoroughbred Tracks	\$ 7,533	\$ 2,526,863	\$ 2,534,396
<u>Harness Racing Associations</u>			
Pompano Park Associates, Ltd.-Harness	\$	\$ 343,494	\$ 343,494
<u>Quarter Horse Associations</u>			
Pompano Park Associates, Ltd.-Quarter Horse	\$ 81,692	\$ 42,393	\$ 124,085
TOTAL ALL TRACKS AND FRONTONS	\$ 89,225	\$ 2,912,750	\$ 3,001,975

*Includes \$6,082 Quarterhorse Breaks

Collections were as follows:

Quarterhorse Promotion Trust Fund

Direct To Fund	\$ 48,960
Pari-Mutuel Division (Forwarded to Fund)	
Appaloosa Racing Promotion Fund (Note C)	7,144
Arabian Racing Promotion Fund (Note C)	16,882
Quarterhorse Racing Promotion Fund (Note C)	<u>64,714</u>
Total Quarterhorse Promotion Trust Fund	\$ 137,700
Total Florida Thoroughbred Breeders' Association	2,520,781
Total Florida Standardbred Breeders' and Owners' Association	343,494
	<u>\$ 3,001,975</u>

SUMMARY OF RACING REVENUES FOR CHARITY/SCHOLARSHIP DAY PERFORMANCES

Fiscal Year 1986-87

	Total Minimum Required Payment(1)	Total Track Revenue	Paid to Public	Daily License Fee	Total Collections Promotional Trust Fund(2)	Total Pari-Mutuel Handle
Greyhound Racing Associations						
Associated Outdoor Clubs, Inc.	\$ 49,890	\$ 79,711	\$ 517,324	\$ 2,080		\$ 649,005
Bayard Raceways, Inc.	39,831	70,803	474,187	3,120		587,941
Berenson's Key West Greyhound Track	3,431	25,241	125,575	3,000		157,247
Biscayne Kennel Club, Inc.	74,476	113,217	750,567	2,080		940,340
Bonita Ft. Myers Corporation	80,651	131,603	860,354	5,200		1,077,808
Investment Corp. of Palm Beach	125,925	198,824	1,294,335	5,200		1,624,284
Investment Corp. of South Florida	84,266	125,649	843,313	2,080		1,055,308
Jacksonville Kennel Club, Inc.	120,910	201,170	1,355,354	5,200		1,682,634
Orange Park Kennel Club, Inc.	52,871	89,927	607,954	3,120		753,872
Pensacola Greyhound Track, Inc.	32,839	65,263	406,561	5,200		509,863
St. Petersburg Kennel Club, Inc.	83,246	128,606	889,875	2,080		1,103,807
Sanford Orlando Kennel Club, Inc.	118,715	190,433	1,236,218	5,200		1,550,566
Sarasota Kennel Club, Inc.	68,628	108,605	708,705	3,120		889,058
Seminole Racing, Inc.	21,663	38,440	244,192	2,080		306,375
Seminole Racing, Inc. d/b/a Daytona Beach Kennel Club, Inc.	29,202	52,172	334,769	3,120		419,263
Washington County Kennel Club, Inc.	11,832	48,290	256,399	5,200		321,721
Total Greyhound Tracks	\$ 998,376	\$ 1,667,954	\$ 10,905,682	\$ 57,080		\$ 13,629,092
Jai-Alai Frontons						
Dania Jai-Alai Division	\$ 60,780	\$ 121,099	\$ 747,255	\$ 5,200		\$ 934,334
Florida Jai-Alai, Inc.	8,794	18,364	109,149	1,040		137,347
Fort Pierce Jai-Alai, Inc.	43,179	110,165	624,031	8,320		785,695
Golden Crown Corporation	7,566	32,974	169,075	3,250		212,865
Miami Jai-Alai	105,021	198,447	1,231,364	5,200		1,540,032
Sports Palace, Inc.	16,477	45,837	261,203	5,200		328,717
Summersport Enterprises, Ltd.	121,754	232,303	1,443,925	7,280		1,805,262
Tampa Jai-Alai	66,243	128,583	773,789	5,200		973,815
The Fronton, Inc.	56,227	112,020	671,645	5,200		845,092
Volusia Jai-Alai, Inc.	17,658	56,044	305,304	5,200		384,206
Total Jai-Alai Frontons	\$ 503,699	\$ 1,055,836	\$ 6,336,740	\$ 51,090		\$ 7,947,365
Thoroughbred Racing Associations						
Calder Race Course, Inc.	\$ 17,342	\$ 155,106	\$ 649,069	\$ 1,000	\$ 3,013	\$ 825,530
Gulfstream Park Racing Association, Inc.	141,154	1,028,083	4,868,034	6,000	34,122	6,077,393
Tampa Bay Downs, Inc.	575	568,337	2,126,352	7,000	16,266	2,718,530
Total Thoroughbred Tracks	\$ 159,071	\$ 1,751,526	\$ 7,643,455	\$ 14,000	\$ 53,401	\$ 9,621,453
Harness Racing Associations						
Pompano Park Associates, Ltd.-Harness	\$ 13,270	\$ 378,547	\$ 1,460,158	\$ 6,300	\$ 8,394	\$ 1,866,669
TOTAL FOR ALL TRACKS AND FRONTONS	\$ 1,674,416	\$ 4,853,863	\$ 26,346,035	\$ 128,470	\$ 61,795	\$ 33,064,579

(1) Net of Tax on Attendance
(2) Florida Standardbred Breeders' and Owners' Association (Breaks)

Racing Revenues For Charity/Scholarship Day Performances
Fiscal Year 1986-87

	Tax On Attendance	Tax On Handle	State 50% Surtax	Breaks	Total Minimum Required Payment
Greyhound Racing Associations					
Associated Outdoor Clubs, Inc.	\$ 634	\$ 45,525	\$ 2,986	\$ 1,379	\$ 50,524
Bayard Raceway, Inc.	520	38,984		847	40,351
Berenson's Key West Greyhound Track	215	2,451	491	489	3,646
Biscayne Kennel Club, Inc.	896	67,665	4,327	2,484	75,372
Bonita Ft. Myers Corporation	1,525	72,413	4,581	3,657	82,176
Investment Corp. of Palm Beach	1,581	113,946	7,206	4,772	127,506
Investment Corp. of South Florida	859	76,403	4,771	3,092	85,125
Jacksonville Kennel Club, Inc.	1,644	118,380		2,530	122,554
Orange Park Kennel Club, Inc.	699	51,594		1,277	53,570
Pensacola Greyhound Track, Inc.	513	29,250	2,404	1,185	33,352
St. Petersburg Kennel Club, Inc.	1,301	80,089		3,157	84,547
Sanford Orlando Kennel Club, Inc.	1,687	108,343	7,104	3,268	120,402
Sarasota Kennel Club, Inc.	988	61,868	3,966	2,794	69,616
Seminole Racing, Inc.	437	19,485	1,415	763	22,100
Seminole Racing, Inc. d/b/a					
Daytona Beach Kennel Club	563	26,164	1,899	1,139	29,765
Washington County Kennel Club, Inc.	293	9,546	1,483	804	12,126
Total Greyhound Tracks	\$ 14,355	\$ 922,106	\$ 42,633	\$ 33,637	\$ 1,012,731
Jai-Alai Frontons					
Dania Jai-Alai Division	\$ 1,239	\$ 57,463	\$ 1,954	\$ 1,363	\$ 62,019
Florida Jai-Alai, Inc.	137	7,977	651	166	8,931
Fort Pierce Jai-Alai, Inc.	1,392	38,389	3,794	996	44,571
Golden Crown Corporation	303	6,238	1,036	292	7,869
Miami Jai-Alai	2,636	100,467	2,952	1,602	107,657
Sports Palace, Inc.	542	14,464	1,556	457	17,019
Summersport Enterprises, Inc.	2,256	115,749	3,658	2,347	124,010
Tampa Jai-Alai	1,477	60,266	4,600	1,377	67,720
The Fronton, Inc.	806	51,126	4,042	1,059	57,033
Volusia Jai-Alai, Inc.	700	15,209	1,812	637	18,358
Total Jai-Alai Frontons	\$ 11,488	\$ 467,348	\$ 26,055	\$ 10,296	\$ 515,187
Thoroughbred Racing Associations					
Calder Race Course, Inc.	\$ 877	\$ 17,342			\$ 18,219
Gulfstream Park Racing Association, Inc.	8,381	141,154			149,535
Tampa Bay Downs, Inc.	5,510	575			6,085
Total Thoroughbred Tracks	\$ 14,768	\$ 159,071			\$ 173,839
Harness Racing Associations					
Pompano Park Associates, Ltd.-Harness	\$ 3,264	\$ 13,270			\$ 16,534
TOTAL ALL TRACKS AND FRONTONS	\$ 43,875	\$ 1,561,795	\$ 68,688	\$ 43,933	\$ 1,718,291

Racing Revenues for Charity/Scholarship Day Performances - Continued
Fiscal Year 1986-87

	Track Commission	Owners' Awards	Withheld For Purses	Withheld For Capital Improvements	Total Track Revenues
<u>Greyhound Racing Associations</u>					
Associated Outdoor Clubs, Inc.	\$ 69,010		\$ 3,837	\$ 6,864	\$ 79,711
Bayard Raceways, Inc.	63,641		3,581	3,581	70,803
Berenson's Key West Greyhound Track	22,782		984	1,475	25,241
Biscayne Kennel Club, Inc.	99,216		4,837	9,164	113,217
Bonita Ft. Myers Corporation	115,745		5,639	10,219	131,603
Investment Corp. of Palm Beach	172,494		9,448	16,882	198,824
Investment Corp. of South Florida	111,068		4,905	9,676	125,649
Jacksonville Kennel Club, Inc.	179,084		11,043	11,043	201,170
Orange Park Kennel Club, Inc.	80,861		4,533	4,533	89,927
Pensacola Greyhound Track, Inc.	57,209		2,825	5,229	65,263
St. Petersburg Kennel Club, Inc.	116,026		6,278	6,302	128,606
Sanford Orlando Kennel Club, Inc.	165,040		8,975	16,418	190,433
Sarasota Kennel Club, Inc.	94,658		4,940	9,007	108,605
Seminole Racing, Inc.	33,489		1,761	3,190	38,440
Seminole Racing, Inc. d/b/a Daytona Beach Kennel Club	46,026		2,114	4,032	52,172
Washington County Kennel Club, Inc.	43,057		1,876	3,357	48,290
Total Greyhound Tracks	\$ 1,469,406		\$ 77,576	\$ 120,972	\$ 1,667,954
<u>Jai-Alai Frontons</u>					
Dania Jai-Alai Division	\$ 114,150			\$ 6,949	\$ 121,099
Florida Jai-Alai, Inc.	16,982			1,382	18,364
Fort Pierce Jai-Alai, Inc.	102,193			7,972	110,165
Golden Crown Corporation	30,873			2,101	32,974
Miami Jai-Alai	186,291			12,156	198,447
Sports Palace, Inc.	42,546			3,291	45,837
Summersport Enterprises, Ltd.	218,663			13,640	232,303
Tampa Jai-Alai	118,807			9,776	128,583
The Fronton, Inc.	103,726			8,294	112,020
Volusia Jai-Alai, Inc.	52,285			3,759	56,044
Total Jai-Alai Frontons	\$ 986,516			\$ 69,320	\$ 1,055,836
<u>Thoroughbred Racing Associations</u>					
Calder Race Course, Inc.	\$ 72,587	\$ 4,593	\$ 71,102	\$ 6,824	\$ 155,106
Gulfstream Park Racing Association, Inc.	522,094		455,805	50,184	1,028,083
Tampa Bay Downs, Inc.	290,956	17,114	238,117	22,150	568,337
Total Thoroughbred Tracks	\$ 885,637	\$ 21,707	\$ 765,024	\$ 79,158	\$ 1,751,526
<u>Harness Racing Associations</u>					
Pompano Park Associates, Ltd.-Harness	\$ 187,793		\$ 174,696	\$ 16,058	\$ 378,547
TOTAL FOR ALL TRACKS AND FRONTONS	\$ 3,529,352	\$ 21,707	\$ 1,017,296	\$ 285,508	\$ 4,853,863

**Division of Pari-Mutuel Wagering
Summary of Racing Revenues
July 1, 1986 through June 30, 1987**

State Revenue from Regular Performances:

Tax on Attendance (Note A)	\$ 2,507,715	
Daily License Fee	5,332,710	
Tax on Handle (Note A)	108,941,625	
Breaks on Greyhound & Jai-Alai (Note A)	2,967,888	
State 50% Surtax (Note A)	<u>4,883,514</u>	
Total State Revenue From Regular Performances		\$ 124,633,452

State Revenue from Charity Performances:

Daily License Fees	<u>\$ 128,470</u>	
Total State Revenue from Charity Days		\$ 128,470

Other State Revenue:

Occupational Licenses (Note A)	\$ 699,134	
Stable/Kennel Registration (Note A)	60,565	
Fingerprint Fees	241,528	
Escheated Tickets from Greyhound & Jai Alai	3,322,123	
Department of Education - Racing Scholarship Funds	118,694	
Racing Research Trust Fund - Fines (Note B)	16,150	
Miscellaneous Revenues	94,227	
Miscellaneous Fines (Note A)	<u>45,950</u>	
Total Other State Revenues		\$ 4,598,371

Quarter Horse Racing Promotion Trust Fund:

Breaks - Regular Performances	\$ 32,176	
1% of Handle - Quarter Horses	<u>56,564</u>	
Total Quarter Horse Promotion Trust Fund Revenue (Note C)		\$ 88,740

Total Revenues Generated		<u>\$ 129,449,033</u>
---------------------------------	--	------------------------------

HORSE RACING

Thoroughbred Racing

The long tradition of quality thoroughbred racing in Florida continued with 368 regular performances at four racetracks. Sunday racing was initiated at Hialeah Park April 27, 1986. Since that date, Sunday has become one of the best days for racing fans as reflected in the attendance and handle reports.

As usual, Florida's major stakes races drew large crowds and national attention. Among highlights of every racing year are the Tropical Park Derby, the Flamingo Stakes at Hialeah Park, Gulfstream's Florida Derby, and Tampa Bay Downs' Budweiser Derby, all of which are important preludes to racing's triple crown. The Florida Stallion Stakes series, run at Calder Race Course, has continued to capture national attention and serves as a showcase for two year old Florida-bred horses.

Thoroughbred racing's tradition as a crowd-pleaser continued as it drew 2,374,923 racing fans, who wagered \$467,150,509 during fiscal 1986-87. No new thoroughbred racing permits were awarded due to geographical restrictions. Thoroughbred racing contributed 24% of Florida's total collections from pari-mutuel wagering.

Under Florida law, horse permitholders are obligated to pay a certain portion of their total handle to horse owners in the form of purses.

At thoroughbred and harness tracks, a minimum of 7.5% of the handle must be paid in purses. In addition, each permitholder may withhold an additional two or three percent of the handle on exotic wagers such as quinellas, trifectas, and the pick six to pay purses or awards to the owners of Florida-bred horses which win races. A portion of the revenue received by each track for simulcasting its races to other states must also be added to purses. The horse racing associations reported the following payments:

	<u>Purses</u>	<u>Owners' Awards Withheld</u>	<u>Totals</u>
Thoroughbred	\$ 42,014,872	\$ 3,317,979	\$ 45,332,851
Standardbred	6,475,096	480,931	6,956,028
Quarter Horse	1,293,347	137,700	1,431,046
TOTAL	<u>\$ 49,783,315</u>	<u>\$ 3,936,610</u>	<u>\$ 53,719,925</u>

Florida-Bred Promotions

Florida's breeders' promotions are administered by private industry groups organized to promote Florida-bred horses and to attract the breeding industry to the region. Each industry conducts its own media campaign. The standardbred and thoroughbred breeders' associations collected over three million dollars last year for the promotion of Florida-bred horses and attracting new breeders to Florida.

Florida's thoroughbred breeding industry produces only 9% of the nation's foal crop, yet Florida-breds have won over 20% of the major stakes races in the country over the last five years. In 1987, Florida-breds won two of the seven Breeders' Cup races. Over \$2,500,000 was paid in breeders' and owners' awards. With over 600 farms and 25,000 horses, our thoroughbred breeding industry is among the fastest growing in the nation.

Florida's standardbreds waged a similar campaign providing \$126,815 in breeders', owners', and stallion awards for eligible horses during Pompano Park's 1986-87 meet, and \$160,000 for four Florida standardbred breeders stakes races. An additional \$50,000 was added to purses in overnight races for Florida-breds. Non-wagering harness races conducted at six locations throughout Florida provided an opportunity for standardbreds to prepare for the winter meet, and allowed Florida citizens outside of the Pompano area to experience harness racing first-hand.

Comparative Data for Regular Performances - Thoroughbred Racing July 1, 1985 through June 30, 1987

<u>Racing Association</u>		<u>Days</u>	<u>Perf.</u>	<u>Paid Attendance</u>	<u>Pari-Mutuel Handle</u>	<u>Tax To State</u>
Calder Race Course, Inc.	1985 - 1986	121	121	768,931	\$ 139,408,284	\$ 3,695,395
	1986 - 1987	119	119	737,512	143,660,467	3,848,160
	Difference	- 2	- 2	- 31,419	4,252,183	152,765
	Pct Change	- 2	- 2	- 4	3	4
Gulfstream Park Racing Association, Inc.	1985 - 1986	50	50	526,559	114,995,640	3,719,901
	1986 - 1987	65	65	552,879	117,666,970	3,470,849
	Difference	15	15	26,320	2,671,330	- 249,052
	Pct Change	30	30	5	2	-7
Hialeah, Inc.	1985 - 1986	65	65	390,819	84,734,715	2,329,613
	1986 - 1987	50	50	421,458	101,577,793	3,245,806
	Difference	- 15	- 15	30,639	16,843,078	916,193
	Pct Change	- 23	- 23	8	20	39
Tampa Bay Downs, Inc.	1985 - 1986	90	90	301,164	35,538,981	203,753
	1986 - 1987	90	90	337,835	38,337,618	207,518
	Difference	0	0	36,671	2,798,637	3,765
	Pct Change	0	0	12	8	2

Comparative Data for Regular Performances - Thoroughbred Racing - Continued

		Days	Perf.	Paid Attendance	Pari-Mutuel Handle	Tax To State
Tropical Park, Inc.	1985 - 1986	49	49	326,813	63,963,979	1,748,959
	1986 - 1987	50	50	325,239	65,907,661	1,803,429
	Difference	1	1	- 1,574	1,943,682	54,470
	Pct Change	2	2	- .5	3	3
TOTAL FOR THOROUGHBRED TRACKS	1985 - 1986	375	375	2,314,286	\$ 438,641,599	\$ 11,697,622
	1986 - 1987	374	374	2,374,923	467,150,509	12,575,762
	Difference	- 1	- 1	60,637	\$ 28,508,910	\$ 878,140
	Pct Change	.3	.3	3	6	8

Harness Racing

Pompano Park's winter harness racing meet in Broward County conducted 120 regular performances, and attracted many of the nation's better standardbreds despite increasing competition from year-round racing in the North. Major stakes races included the Breeders' Crown (three year old filly trot), offering a purse of over \$496,850. Continued growth in handle and attendance reflected the increasing popularity of this sport in Florida, with \$67,290,552 wagered by 505,697 patrons. No new permit applications were received by the Division during fiscal year 1986-87. Harness racing contributed 3% of the State's overall collections from pari-mutuel wagering.

Comparative Data for Regular Performances - Harness Racing
July 1, 1985 through June 30, 1987

Racing Association	Days	Perf.	Paid Attendance	Pari-Mutuel Handle	Tax To State	
Pompano Park Associates, Ltd.-Harness	1985 - 1986	120	120	491,698	\$ 60,486,559	\$ 1,070,478
	1986 - 1987	120	120	505,697	67,290,552	1,305,100
	Difference	0	0	13,999	6,803,993	234,622
	Pct Change	0	0	3	11	22
TOTAL FOR HARNESS TRACKS	1985 - 1986	120	120	491,698	\$ 60,486,559	\$ 1,070,478
	1986 - 1987	120	120	505,697	67,290,552	1,305,100
	Difference	0	0	13,999	\$ 6,803,993	\$ 234,622
	Pct Change	0	0	3	11	22

Quarter Horse Racing

Quarter horse racing at Pompano Park this spring included forty-six performances. Pompano's largest stakes race this year was the Florida Bred Futurity, with a purse of over \$89,000.

During forty-six performances conducted in fiscal year 1986-87, \$8,865,521 was wagered by 87,400 fans. Quarter horse racing contributed 1% of the total collections from pari-mutuel wagering by the State. However, because our reporting period ended during the race meeting, this only reflects a part of the total contribution by quarter horse racing.

During fiscal year 1986-87, the Division issued new permits for the Osceola Quarter Horse Association, Wharton Park/Osceola Park and Classic Mile.

The promotional funds for quarter horse racing are administered by the Florida Department of Agriculture. Promotional activities continued to be expended for the advancement of Florida's Quarter Horse breeding industry.

Comparative Data for Regular Performances - Quarter Horse Racing
July 1, 1985 through June 30, 1987

Racing Association	Days	Perf.	Paid Attendance	Pari-Mutuel Handle	Tax To State	
Pompano Park Associates, Ltd.-Quarter Horse	1985 - 1986	26	26	57,971	\$ 5,207,814	\$ 33,589
	1986 - 1987	46	46	87,400	8,865,521	63,061
	Difference	20	20	29,429	3,657,707	29,472
	Pct Change	77	77	51	70	88
TOTAL FOR QUARTER HORSE TRACKS	1985 - 1986	26	26	57,971	\$ 5,207,814	\$ 33,589
	1986 - 1987	46	46	87,400	8,865,521	63,061
	Difference	20	20	29,429	\$ 3,657,707	\$ 29,472
	Pct Change	77	77	51	70	88

JAI-ALAI

Florida was the first state in the nation to offer pari-mutuel wagering on jai-alai. Today Florida has the largest jai-alai frontons in the world. With twelve permitholders operating 1,943 regular performances in ten frontons, we attracted the world's premier players.

Both handle and attendance showed slight increases from the prior year; \$414,623,258 was wagered on regular jai-alai games by 4,742,893 patrons in fiscal year 1986-87. No new permits were issued in Florida. Jai-Alai contributed 21% of the State's collections from pari-mutuel wagering.

**Comparative Data for Regular Performances - Jai-Alai Frontons
July 1, 1985 through June 30, 1987**

Jai-Alai Frontons	Days	Perf.	Paid Attendance	Pari-Mutuel Handle	Tax To State	
<u>Dania Jai-Alai Division</u>	1985 - 1986	110	159	632,316	\$ 48,850,706	\$ 3,620,640
	1986 - 1987	110	159	630,953	51,479,538	3,808,947
	Difference	0	0	- 1,363	2,628,832	188,307
	Pct Change	0	0	- .2	5	5
<u>Florida Jai-Alai, Inc.</u>	1985 - 1986	105	159	291,041	27,843,137	2,060,607
	1986 - 1987	123	186	321,089	29,977,554	2,209,372
	Difference	18	27	30,048	2,134,417	148,765
	Pct Change	17	17	10	8	7
<u>Fort Pierce Jai-Alai</u>	1985 - 1986	106	160	218,808	18,628,367	1,363,803
	1986 - 1987	134	203	277,263	23,339,756	1,662,476
	Difference	28	43	58,455	4,711,389	298,673
	Pct Change	26	27	27	25	22
<u>Golden Crown Corporation</u>	1985 - 1986	110	137	125,188	11,568,091	754,852
	1986 - 1987	109	137	127,890	12,115,021	796,874
	Difference	- 1	0	2,702	546,930	42,022
	Pct Change	- 1	0	2	5	6
<u>Miami Jai-Alai</u>	1985 - 1986	105	159	655,628	60,802,207	4,490,063
	1986 - 1987	105	159	628,023	61,850,830	4,561,243
	Difference	0	0	- 27,605	1,048,623	71,180
	Pct Change	0	0	- 4	2	2
<u>Ocala Jai-Alai</u>	1985 - 1986	106	160	218,000	17,918,111	1,302,540
	1986 - 1987	87	133	157,684	12,964,276	903,055
	Difference	- 19	- 27	- 60,316	- 4,953,835	- 399,485
	Pct Change	- 18	- 17	- 28	- 28	-31
<u>Sports Palace, Inc.</u>	1985 - 1986	109	158	211,735	16,242,945	1,163,546
	1986 - 1987	104	157	207,209	15,577,869	1,103,797
	Difference	- 5	- 1	- 4,526	- 665,076	- 59,749
	Pct Change	- 5	- 1	- 2	- 4	-5
<u>Summer Jai-Alai</u>	1985 - 1986	102	155	520,329	49,522,947	3,718,462
	1986 - 1987	105	159	511,805	50,427,741	3,685,359
	Difference	3	4	- 8,524	904,794	- 33,103
	Pct Change	3	3	- 2	2	-1
<u>Summersport Enterprises, Ltd.</u>	1985 - 1986	106	106	424,236	36,895,949	2,734,717
	1986 - 1987	104	104	407,251	37,234,322	2,753,011
	Difference	- 2	- 2	- 16,985	338,373	18,294
	Pct Change	- 2	- 2	- 4	1	1
<u>Tampa Jai-Alai</u>	1985 - 1986	105	159	543,863	40,798,444	3,107,061
	1986 - 1987	124	188	643,492	51,410,590	3,954,699
	Difference	19	29	99,629	10,612,146	847,638
	Pct Change	18	18	18	26	27
<u>The Fronton, Inc.</u>	1985 - 1986	108	159	461,098	38,049,835	2,884,740
	1986 - 1987	108	159	458,973	41,197,856	3,108,131
	Difference	0	0	- 2,125	3,148,021	223,391
	Pct Change	0	0	- .5	8	8
<u>Volusia Jai-Alai, Inc.</u>	1985 - 1986	131	181	359,572	25,697,029	1,900,055
	1986 - 1987	143	199	371,261	27,047,905	1,942,385
	Difference	12	18	11,689	1,350,876	42,330
	Pct Change	9	10	3	5	2
TOTAL FOR JAI-ALAI FRONTONS	1985 - 1986	1,303	1,852	4,661,814	\$ 392,817,768	\$ 29,101,086
	1986 - 1987	1,356	1,943	4,742,893	414,623,258	30,489,349
	Difference	53	91	81,079	\$ 21,805,490	\$ 1,388,263
	Pct Change	4	5	2	6	5

GREYHOUND RACING

Florida's greyhound racing industry is the largest in the nation; handle and attendance are more than triple that of any other greyhound racing state. Of the fifty greyhound tracks in the eighteen states where greyhound racing is legal, eighteen are in Florida. As such, Florida attracts some of the finest racing animals in the world. It would be impossible to name all of the major stakes races conducted at Florida greyhound tracks. However, among the highlights of the racing year are the Biscayne \$165,000 Florida World Challenge Stakes, the \$145,000 Hollywood World Classic, Tampa's Kings & Queens Stakes, Derby Lane's 61st Annual Derby and the Flagler \$150,000 International Classic. In addition, Florida's greyhound racing industry can boast some of the largest and most beautiful racetracks in the world.

The enormous popularity of greyhound racing has insured continued prosperity in the industry. Both handle and attendance remained strong. Showing a slight decrease over the prior year, \$996,674,064 was wagered by 8,794,823 patrons at 2,719 regular performances during fiscal 1986-87. Greyhound racing contributed 51% of the State's total collections from pari-mutuel wagering.

Under Florida Law, greyhound permitholders are obligated to pay a certain portion of their total handle to greyhound owners in the form of purses. Racing associations pay either 3% of the handle or the amount specified by kennel contracts entered before the 1978-79 racing season, whichever is greater. Last year, Florida greyhound tracks reported paying \$27,155,539 in purses.

Comparative Data for Regular Performances - Greyhound Racing
July 1, 1986 through June 30, 1987

<u>Racing Association</u>	<u>Days</u>	<u>Perf.</u>	<u>Paid Attendance</u>	<u>Pari-Mutuel Handle</u>	<u>Tax To State</u>	
Associated Outdoor Clubs, Inc.	1985 - 1986	104	155	807,262	\$ 90,781,219	\$ 7,486,917
	1986 - 1987	104	156	782,537	91,521,188	7,539,525
	Difference	0	1	-24,725	739,969	52,608
	Pct Change	0	1	- 3	1	1
Bayard Raceways, Inc.	1985 - 1986	96	126	246,100	30,230,977	2,279,206
	1986 - 1987	38	48	96,918	12,507,355	943,090
	Difference	- 58	- 78	- 149,182	- 17,723,622	- 1,336,116
	Pct Change	- 60	- 62	- 61	- 59	-59
Berenson's Key West Greyhound Track	1985 - 1986	109	124	63,696	5,593,726	288,540
	1986 - 1987	107	121	61,966	5,509,193	305,625
	Difference	- 2	- 3	- 1,730	- 84,533	17,085
	Pct Change	- 2	- 2	- 3	- 2	6
Biscayne Kennel Club, Inc.	1985 - 1986	47	72	349,686	44,351,177	3,662,700
	1986 - 1987	159	240	1,061,997	147,094,558	12,152,853
	Difference	112	168	712,311	102,743,381	8,490,153
	Pct Change	238	233	204	232	232
Bonita Ft. Myers Corporation	1985 - 1986	106	159	503,505	43,512,263	3,589,400
	1986 - 1987	108	159	536,233	48,353,670	3,995,540
	Difference	2	0	32,728	4,841,407	406,140
	Pct Change	2	0	7	11	11
Investment Corporation of Palm Beach	1985 - 1986	106	159	627,044	63,929,292	5,249,599
	1986 - 1987	106	159	648,548	68,286,666	5,603,291
	Difference	0	0	21,504	4,357,374	353,692
	Pct Change	0	0	3	7	7
Investment Corporation of South Florida	1985 - 1986	104	156	924,285	104,072,560	8,613,089
	1986 - 1987	105	157	927,857	110,454,950	9,136,010
	Difference	1	1	3,572	6,382,390	522,921
	Pct Change	1	1	.4	6	6
Jacksonville Kennel Club, Inc.	1985 - 1986	109	143	434,857	47,090,920	3,594,254
	1986 - 1987	162	221	633,683	71,703,010	5,462,619
	Difference	53	78	198,826	24,612,090	1,868,365
	Pct Change	49	55	46	52	52
Jefferson County Kennel Club, Inc.	1985 - 1986	104	125	177,439	17,604,291	1,373,697
	1986 - 1987	110	131	178,239	18,506,148	1,406,085
	Difference	6	6	800	901,857	32,388
	Pct Change	6	5	.5	5	2
Orange Park Kennel Club, Inc.	1985 - 1986	107	143	380,886	45,859,002	3,495,339
	1986 - 1987	107	143	398,291	47,515,562	3,627,373
	Difference	0	0	17,405	1,656,560	132,034
	Pct Change	0	0	5	4	4

Comparative Data for Regular Performances - Greyhound Racing - Continued

Racing Association		Days	Perf.	Paid Attendance	Pari-Mutuel Handle	Tax To State
Pensacola Greyhound Track, Inc.	1985 - 1986	133	182	274,838	24,954,485	1,945,104
	1986 - 1987	<u>120</u>	<u>158</u>	<u>235,505</u>	<u>20,318,331</u>	<u>1,530,755</u>
	Difference	- 13	- 24	- 39,333	- 4,636,154	- 414,349
	Pct Change	- 10	- 13	- 14	- 19	- 21
St. Petersburg Kennel Club, Inc.	1985 - 1986	102	155	1,009,421	105,178,073	8,283,835
	1986 - 1987	<u>103</u>	<u>155</u>	<u>990,963</u>	<u>109,128,429</u>	<u>8,597,496</u>
	Difference	1	0	- 18,458	3,950,356	313,661
	Pct Change	1	0	- 2	4	4
Sanford Orlando Kennel Club, Inc.	1985 - 1986	105	159	519,522	55,170,208	4,501,794
	1986 - 1987	<u>105</u>	<u>159</u>	<u>541,729</u>	<u>59,265,417</u>	<u>4,841,998</u>
	Difference	0	0	22,207	4,095,209	340,204
	Pct Change	0	0	4	7	8
Sarasota Kennel Club, Inc.	1985 - 1986	100	153	451,330	50,890,984	4,146,308
	1986 - 1987	<u>101</u>	<u>153</u>	<u>462,407</u>	<u>53,146,049</u>	<u>4,329,719</u>
	Difference	1	0	11,077	2,255,065	183,411
	Pct Change	1	0	2	4	4
Seminole Racing, Inc.	1985 - 1986	104	156	348,406	38,088,644	3,081,494
	1986 - 1987	<u>104</u>	<u>156</u>	<u>331,344</u>	<u>37,174,053</u>	<u>3,006,602</u>
	Difference	0	0	- 17,062	- 914,591	- 74,892
	Pct Change	0	0	- 5	- 2	- 2
Seminole Racing, Inc. d/b/a Daytona Beach Kennel Club	1985 - 1986	109	161	391,414	34,565,817	2,786,615
	1986 - 1987	<u>128</u>	<u>188</u>	<u>421,385</u>	<u>36,557,585</u>	<u>2,934,675</u>
	Difference	19	27	29,971	1,991,768	148,060
	Pct Change	17	17	8	6	5
Washington County Kennel Club, Inc.	1985 - 1986	107	140	195,616	19,250,581	1,511,362
	1986 - 1987	<u>109</u>	<u>140</u>	<u>189,274</u>	<u>18,689,812</u>	<u>1,415,885</u>
	Difference	2	0	- 6,342	- 560,769	- 95,477
	Pct Change	2	0	- 3	- 3	- 6
West Flagler Associates, Ltd.	1985 - 1986	155	235	983,225	128,848,035	10,620,968
	1986 - 1987	<u>49</u>	<u>75</u>	<u>295,947</u>	<u>40,942,088</u>	<u>3,371,022</u>
	Difference	- 106	- 160	- 687,278	- 87,905,947	- 7,249,946
	Pct Change	- 68	- 68	- 70	- 68	- 68
TOTAL FOR GREYHOUND TRACKS	1985 - 1986	1,907	2,703	8,688,532	\$ 949,972,254	\$ 76,510,221
	1986 - 1987	<u>1,925</u>	<u>2,719</u>	<u>8,794,823</u>	<u>996,674,064</u>	<u>80,200,163</u>
	Difference	18	16	106,291	\$ 46,701,810	\$ 3,689,942
	Pct Change	1	1	1	5	5
TOTAL FOR ALL TRACKS AND FRONTONS	1985 - 1986	3,731	5,076	16,214,301	\$ 1,847,125,994	\$ 118,412,996
	1986 - 1987	<u>3,821</u>	<u>5,202</u>	<u>16,505,736</u>	<u>1,954,603,904</u>	<u>124,633,435</u>
	Difference	90	126	291,435	\$ 107,477,910	\$ 6,220,439
	Pct Change	2	2	2	6	5

Summary of Additional Days of Racing Held For Charitable Purposes
During Fiscal Year 1986-87

RACING ASSOCIATION	CHARITY			SCHOLARSHIP		
	DATE	PAID ATTENDANCE	PARI-MUTUEL HANDLE	DATE	PAID ATTENDANCE	PARI-MUTUEL HANDLE
Associated Outdoor Clubs, Inc.	09/26/86	2,289	\$ 297,092	10/10/86	2,381	\$ 351,913
Bayard Raceways, Inc.	05/20/87	1,237	180,824			
	05/27/87	1,345	195,115			
	06/03/87	1,416	212,002			
Berenson's Key West Greyhound Track, Inc.	12/13/86	308	27,469	12/20/86	284	26,592
	12/27/86	428	36,082	01/10/87	435	33,544
	01/03/87	338	33,560			
Biscayne Kennel Club, Inc.	11/17/86	3,212	455,746			
	12/15/86	3,329	484,594			
Bonita Ft. Myers Corporation	12/29/86	1,636	192,051	04/14/87	1,907	206,841
	01/02/87	2,274	233,587	04/28/87	2,195	224,963
	04/15/87	2,237	220,366			
Investment Corp. of Palm Beach	01/13/87	2,686	307,815	01/05/87	2,590	281,035
	01/20/87	3,144	379,466	01/06/87	2,947	339,576
	01/27/87	2,477	316,392			
Investment Corp. of South Florida				12/26/86	4,218	518,197
				12/31/86	3,569	537,111
Jacksonville Kennel Club, Inc.	03/24/87	2,598	288,337	04/14/87	3,443	534,315
	03/31/87	2,477	285,458	04/21/87	2,362	297,644
	04/07/87	2,427	276,880			
Orange Park Kennel Club, Inc.	01/07/87	1,856	247,476			
	01/14/87	1,983	250,744			
	01/21/87	1,822	255,652			
Pensacola Greyhound Track, Inc.	08/08/86	990	109,356	08/15/86	1,022	111,307
	09/12/86	816	94,310	09/05/86	695	73,359
	09/19/86	1,017	121,531			
St. Petersburg Kennel Club, Inc.				01/13/87	4,437	553,713
				01/20/87	4,570	550,094
Sanford Orlando Kennel Club, Inc.	01/13/87	2,429	281,992	01/06/87	2,551	302,896
				01/20/87	2,641	294,532
				01/27/87	2,316	286,808
				02/03/87	3,038	384,338
Sarasota Kennel Club, Inc.	05/12/87	3,092	324,807	05/19/87	2,703	292,893
				05/26/87	2,437	271,358
Seminole Racing, Inc.	07/16/86	1,361	157,080			
	06/25/87	1,170	149,295			
Seminole Racing, Inc. d/b/a Daytona Beach Kennel Club	08/13/86	1,565	162,521	08/27/87	1,338	124,555
	08/20/86	1,428	132,187			
Washington County Kennel Club, Inc.	06/15/87	636	81,543	06/01/87	215	36,115
	06/22/87	516	67,688	06/08/87	450	62,385
	06/29/87	628	73,990			
Dania Jai-Alai Division	11/18/86	1,963	198,280	12/02/86	1,934	181,443
	12/09/86	1,991	201,193	12/16/86	1,817	181,612
	01/09/87	1,829	171,806			
Fort Pierce Jai-Alai	08/18/86	936	96,042	07/28/86	930	102,266
	08/25/86	802	90,419	08/11/86	921	93,728
	08/27/86	982	95,835	06/15/87	975	103,653
	06/29/87	947	104,825	06/22/87	928	98,927
Florida Jai-Alai, Inc.	10/28/86	1,365	137,347			
Golden Crown Corporation	11/28/86	282	31,914	11/10/86	233	25,518
	02/16/87	291	26,285	01/19/87	501	44,679
	02/16/87	1,026	84,469			

Summary of Additional Days of Racing Held For Charitable Purposes - Continued
During Fiscal Year 1986-87

RACING ASSOCIATION	CHARITY			SCHOLARSHIP		
	DATE	PAID ATTENDANCE	PARI-MUTUEL HANDLE	DATE	PAID ATTENDANCE	PARI-MUTUEL HANDLE
Miami Jai-Alai	03/17/87	3,096	\$ 316,740	03/03/87	3,243	\$ 314,323
	03/24/87	3,217	300,888	03/10/87	3,235	318,905
				03/31/87	2,688	289,176
Sports Palace, Inc.	10/28/86	758	62,006	09/30/86	808	57,770
	11/18/86	953	72,328	10/21/86	785	64,723
	11/25/86	866	71,890			
Summersport Enterprises, Ltd.	07/09/86	2,583	227,718	09/10/86	2,627	270,591
	07/16/86	2,577	248,373	09/17/86	2,759	301,864
	06/17/87	2,299	244,071	06/10/87	2,623	249,045
	06/24/87	2,457	263,600			
Tampa Jai-Alai	04/14/87	2,281	202,919	04/07/87	2,507	193,838
	04/28/87	2,059	183,238	04/21/87	2,502	210,122
	05/05/87	2,009	183,698			
The Fronton, Inc.	12/11/86	1,415	167,239	02/27/87	1,619	161,223
	12/18/86	1,391	172,680	03/13/87	1,874	171,068
	03/27/87	1,759	172,882			
Volusia Jai-Alai, Inc.	05/18/87	1,397	106,123	07/23/86	731	46,606
	06/15/87	1,198	80,129	06/29/87	1,201	83,247
	06/22/87	1,129	68,101			
Calder Race Course, Inc.	10/21/86	3,875	825,530			
Gulfstream Park Racing Association, Inc.	05/13/87	4,454	964,959			
	05/14/87	4,493	923,449			
	05/20/87	5,328	1,087,821			
	05/21/87	4,495	995,845			
	05/22/87	4,685	982,732			
	05/27/87	5,418	1,122,587			
Tampa Bay Downs, Inc.	12/12/86	2,233	311,630	12/19/86	2,280	312,670
	01/02/87	3,566	429,276	12/26/86	4,543	517,419
	01/09/87	2,960	377,371			
	01/16/87	3,349	382,956			
	01/23/87	2,918	387,208			
Pompano Park Associates, Ltd.-Harness	10/23/86	2,505	264,543	10/30/86	2,858	374,124
	11/06/86	3,335	421,412	11/13/86	3,079	392,315
	11/20/86	3,060	414,275			
TOTAL		159,699	\$ 21,207,640		104,945	\$ 11,856,939

**Paid Attendance, Pari-Mutuel Handle, State Revenue
Fiscal Year 1931-1932 Through Fiscal Year 1986-1987**

FISCAL YEAR	NO. OF RACING DAYS	TOTAL PAID ATTENDANCE	TOTAL PARI-MUTUEL HANDLE	STATE REVENUE AS A PERCENT OF HANDLE	TOTAL STATE REVENUE
1931-1932	462	1,157,161	\$ 17,365,424	4.25 %	\$ 737,301
1932-1933	550	1,281,017	19,146,938	3.99	763,877
1933-1934	609	1,591,024	27,549,567	3.89	1,072,364
1934-1935	775	2,024,636	36,577,493	3.83	1,401,177
1935-1936	906	1,854,292	38,826,132	3.70	1,436,957
1936-1937	1,029	2,330,964	50,121,647	3.67	1,838,339
1937-1938	1,053	2,401,367	54,047,114	3.64	1,969,741
1938-1939	1,025	2,373,271	55,272,416	3.62	2,000,759
1939-1940	1,057	2,517,436	64,388,377	3.58	2,302,834
1940-1941	902	2,695,464	68,280,202	3.57	2,436,374
1941-1942	972	2,195,080	63,601,585	6.91	4,392,862
1942-1943	734	854,256	26,658,646	4.00	1,066,088
1943-1944	982	2,458,933	109,561,969	6.23	6,824,273
1944-1945	333	945,341	35,171,557	5.71	2,007,853
1945-1946	1,442	4,448,084	211,571,289	7.35	15,554,034
1946-1947	1,298	4,444,543	194,710,333	7.54	14,680,731
1947-1948	1,318	4,344,479	180,647,561	7.50	13,542,407
1948-1949	1,404	4,641,038	178,171,736	7.42	13,222,462
1949-1950	1,377	4,539,742	178,842,858	7.33	13,101,522
1950-1951	1,378	4,643,293	204,385,597	7.34	14,997,486
1951-1952	1,432	5,279,674	248,728,380	7.27	18,090,498
1952-1953	1,549	5,732,369	272,696,059	7.24	19,734,514
1953-1954	1,722	5,812,577	276,681,999	7.24	20,026,022
1954-1955	1,731	5,809,467	284,044,131	7.22	20,521,463
1955-1956	1,879	5,915,941	310,681,432	7.78	24,180,834
1956-1957	1,907	6,035,932	322,948,073	7.73	24,969,497
1957-1958	2,012	5,626,152	315,546,506	7.70	24,306,950
1958-1959	2,055	5,966,709	329,141,335	7.64	25,157,460
1959-1960	2,180	6,209,688	347,947,488	7.65	26,609,332
1961-1961	2,216	6,328,535	344,173,946	7.60	26,163,298
1961-1962	2,273	6,735,583	363,082,896	7.55	27,420,986
1962-1963	2,276	6,919,691	374,598,480	7.58	28,392,064
1963-1964	2,335	7,878,991	418,056,340	7.54	31,503,458
1964-1965	2,318	8,537,248	462,298,032	7.57	34,984,262
1965-1966	2,498	8,969,589	500,471,936	7.53	37,667,499
1966-1967	2,596	9,020,232	515,430,636	7.45	38,408,241
1967-1968	2,537	9,459,239	563,772,040	7.45	41,980,547
1968-1969	2,623	9,912,630	630,034,977	7.42	46,743,700
1969-1970	2,678	10,735,962	712,244,838	7.28	51,882,798
1970-1971	2,873	11,737,046	778,550,830	7.18	55,876,622
1971-1972	2,959	12,769,157	864,502,920	7.06	61,038,725
1972-1973	3,019	13,747,714	978,174,354	7.02	68,669,716
1973-1974	3,160	14,883,698	1,083,208,538	7.05	76,315,213
1974-1975	3,229	16,192,983	1,156,152,799	7.23	83,593,772
1975-1976	3,252	16,293,398	1,168,767,050	7.27	84,996,163
1976-1977	3,307	16,276,898	1,244,159,788	7.18	89,376,224
1977-1978	3,416	16,789,933	1,361,155,037	6.70	91,211,859
1978-1979	3,514	17,274,154	1,547,072,800	6.71	103,829,406
1979-1980	3,380	16,223,047	1,588,944,696	6.73	107,009,883
1980-1981	3,711	17,074,874	1,683,134,201	6.59	110,861,171
1981-1982	3,660	16,959,977	1,712,354,503	6.56	112,323,447
1982-1983	3,723	17,002,197	1,754,139,978	6.60	115,740,365
1983-1984	3,699	16,692,861	1,824,552,088	6.58	120,130,754
1984-1985	3,675	16,543,816	1,848,080,598	6.70	123,878,295
1985-1986	3,731	16,214,301	1,847,125,994	6.66	123,038,667
1986-1987	3,821	16,505,736	1,954,603,904	6.62	129,449,033
TOTAL	118,552	459,809,420	\$ 33,802,158,043	6.93 %	\$ 2,341,432,179

CAPITAL IMPROVEMENTS

In 1979, Florida's legislature provided that part of the handle at Florida's tracks and frontons could be withheld for the purpose of capital improvements which would benefit the patrons of Florida's wagering facilities, and defray some State and Federal taxes. The effect of the program has been to modernize and improve Florida's pari-mutuel facilities. Each year clubhouses and grandstands are refurbished, public areas are renovated, and appearances generally improved. Thirty of Florida's thirty-seven active permit holders requested use of these funds during fiscal year 1986-87, demonstrating a renewed commitment to providing the finest racing and jai-alai facilities in the country.

Withholdings since the implementation of the capital improvement program have been:

1979-80	\$ 383,429
1980-81	8,260,822
1981-82	10,085,297
1982-83	10,569,059
1983-84	11,372,754
1984-85	16,246,829
1985-86	16,522,667
1986-87	17,400,436
TOTAL	<u>\$ 90,841,293</u>

CHARITY AND SCHOLARSHIP PERFORMANCES

With several exceptions, each track or fronton may operate up to five additional performances during a meet for the benefit of approved charities, major institutions of higher learning, community colleges, the Racing Scholarship Trust Fund, and the Historic Preservation Trust Fund. A minimum of \$1,718,291 was paid in fiscal 1986-87.

The amount contributed to charities or the Racing Scholarship Trust Fund is determined by calculating the profits of the association for that performance plus the taxes that would have been due to the state had it been a regular performance. Recipient charities are selected by the association and approved by the Division based upon whether or not they meet the basic requirements for charitable organizations established by Florida law.

The Racing Scholarship Trust Fund is administered by the Florida Board of Regents, and is used to provide scholarships to deserving students who are attending Florida's universities.

Over 16 million dollars has been contributed to this fund since the program began thirty-eight years ago.

1950	\$ 165,830	1962	\$ 408,652	1974	\$ 949,802
1951	247,261	1963	393,641	1975	835,386
1952	239,148	1964	399,898	1976	740,842
1953	232,907	1965	474,937	1977	541,271
1954	280,507	1966	462,441	1978	543,991
1955	279,228	1967	419,500	1979	560,099
1956	299,071	1968	541,389	1980	663,573
1957	349,514	1969	447,133	1981	550,438
1958	366,482	1970	495,388	1982	393,987
1959	293,902	1971	619,539	1983	289,929
1960	364,819	1972	717,037	1984	172,776
1961	316,021	1973	733,735	1985	165,962
				1986	149,711
				1987	118,694*
		TOTAL			<u>\$16,224,441</u>

ABANDONED WINNING TICKETS

Abandoned tickets are winning tickets which have not been cashed. A winning pari-mutuel ticket is valid for one year. At the end of that time, the value of the ticket escheats to the state. In greyhound racing and jai-alai, these funds are deposited to the State School Fund, and are used for the support and maintenance of Florida's public schools. \$3,322,123 was collected in abandoned winning tickets this fiscal year. The following chart shows yearly receipts since 1957, when the Division began collecting these funds. In thoroughbred and harness racing outstanding tickets are paid to the respective breeders' associations; in quarter horse racing, the Division collects these funds for deposit to the Quarter Horse Racing Promotion Trust Fund, which is administered by the Florida Department of Agriculture. All of these funds are used to promote the Florida horse breeding industry. (See Summary of Racing Revenues.)

1957	\$ 3,992	1967	\$ 381,857	1977	\$ 1,449,016
1958	204,449	1968	448,161	1978	1,582,011
1959	240,545	1969	513,254	1979	2,011,456
1960	311,045	1970	590,891	1980	1,881,069
1961	403,904	1971	666,405	1981	1,884,234
1962	273,273	1972	706,391	1982	2,095,480
1963	265,046	1973	943,268	1983	2,537,583
1964	292,194	1974	1,136,606	1984	2,644,804
1965	320,530	1975	1,288,318	1985	3,082,639
1966	425,130	1976	1,429,361	1986	3,178,266
				1987	3,322,123*
		TOTAL			<u>\$36,513,301</u>

* See Note C (Financial Section)

ASSOCIATED OUTDOOR CLUBS, INC.
P.O. Box 8096, Tampa, Florida 33674

Greyhound Track - Tampa, Florida
104 Racing Days - September 6, 1986 to January 5, 1987 - 156 Performances

OFFICERS

Harry J. Hater, Jr., Chairman of the Board
John M. Hater, President
Charles W. Bidwill, Jr., Secretary
James E. Heile, Assistant Treasurer
Treasurer

James J. Patton, Vice President
Harry J. Hater, Jr., Treasurer
Robert E. Hater II, Assistant Treasurer
William H. Johnston, Jr., Assistant

DIRECTORS

Charles W. Bidwill, Jr.
James E. Heile
James J. Patton
John M. Hater

Robert E. Hater II
William H. Johnston Jr.
Harry J. Hater, Jr.

Distribution of Handle
Total Paid to Public
Total for State
Total for Track/Fronton
Grand Total Handle

\$ 72,982,814
7,435,908
11,102,466
\$ 91,521,188

Other State Income
Admission Tax
Occupational Licenses
Kennel Names
Total Other State Income

\$ 103,618
9,029
400
\$ 113,047

Average Performance: \$ 586,674
Average Wager Per Capita-Based On Taxable Admissions: \$ 117
Average Paid Attendance Per Performance: 5,016

Total Purses Paid: 1986-1987 Season \$ 2,765,102
Seating Capacity: 6,600 - Parking: 3,900 Spaces
Track: Length 1340' / Stretch 589' / Width 19'5"
Equipment: Autotote, Ltd., Inside Single Lure

BAYARD RACEWAYS, INC.

P.O. Box 41309, Jacksonville, Florida 32203

Greyhound Track - Jacksonville, Florida
38 Racing Days - May 18, 1987 to June 30, 1987 - 48 Performances

OFFICERS

James J. Patton, Chairman of the Board
Charles W. Bidwill, Secretary/Treasurer
John C. Howell, Assistant Treasurer

Howard I. Korman, President
William H. Johnston, Sr., Vice-President
Robert J. Pitocchelli, Assistant Secretary

DIRECTORS

James J. Patton
Charles W. Bidwill
William R. Burnett
Robert J. Pitocchelli

John C. Howell
William H. Johnston, Jr.
Lucille Patton

Distribution of Handle
Total Paid To Public
Total For State
Total For Track/Fronton
Grand Total Handle

\$ 10,085,386
930,564
1,491,405
\$ 12,507,355

Other State Income
Admission Tax
Occupational Licenses
Total Other State Income

\$ 12,526
5,594
\$ 18,119

Average Performance: \$ 260,570
Average Wager Per Capita-Based On Taxable Admissions: \$ 129
Average Paid Attendance Per Performance: 2,019

Total Purse Paid: 1986-1987 Season \$ 973,380.58
Seating Capacity: 3,000 - Parking: 4,000 Spaces
Track: Length 1320' / Stretch 583' / Width 20'
Equipment: Autotote, Ltd., Inside Single Lure

BERENSONS' KEY WEST GREYHOUND TRACK
P.O. Box 2451, Key West, Florida 33040

Greyhound Track - Key West, Florida
107 Racing Days - December 11, 1986 to April 18, 1987 - 121 Performances

OFFICERS

Richard B. Berenson, President
Louis S. Berenson, Chairman of the Board

Mary F. Berenson, Vice President
Diane B. Watson, Secretary/Treasurer

Distribution Of Handle	
Total Paid To Public	\$ 4,402,728
Total For State	298,190
Total For Track/Fronton	808,275
Grand Total Handle	<u>\$ 5,509,193</u>

Other State Income	
Admission Tax	\$ 7,436
Occupational Licenses	3,518
Kennel Names	250
Total Other State Income	<u>\$ 11,204</u>

Average Performance: \$ 45,531
Average Wager Per Capita-Based On Taxable Admission: \$ 89
Average Paid Attendance Per Performance: 512

Total Purses Paid: 1986-1987 Season \$ 181,691
Seating Capacity: 709 - Parking: 275 Spaces
Track: Length 1378' / Stretch 250' / Width 21'
Equipment: United Totalisator Co., Inside Single Lure

BISCAYNE KENNEL CLUB, INC.
Box Drawer 531070
Miami Shores, Florida 33153-0170

Greyhound Track - Miami, Florida
103 Racing Days - October 31, 1986 to June 30, 1987 - 154 Performances
56 Racing Days - July 2, 1986 to September 4, 1986 - 86 Performances

OFFICERS

James C. Knight, President/Chairman of the Board
Oscar J. Padron, Assistant Treasurer

W. Robert Kuhn, Jr., Treasurer
Ellen W. McDonnell, Executive V.P./Secretary

DIRECTORS

John R. Knight
Jack G. Admire
James C. Knight
Ellen W. Spitzer
Ellen W. McDonnell

William Allen, Jr.
Atwood Dunwoody
John D. Armstrong
Marilyn A. West

Distribution to Handle	
Total Paid to Public	\$ 117,372,868
Total For State	12,022,157
Total For Track/Fronton	17,699,533
Grand Total Handle	<u>\$ 147,094,558</u>

Other State Income	
Admission Tax	\$ 130,697
Occupational Licenses	44,786
Kennel Names	2,500
Total Other State Income	<u>\$ 177,983</u>

Average Performance: \$ 612,894
Average Wager Per Capita-Based on Taxable Admissions: \$ 139
Average Paid Attendance Per Performance: 4,425

Total Purses Paid: 1986-1987 Season \$ 3,066,462
Seating Capacity: 8,900 - Parking: 6,500 Spaces
Track: Length 1485' / Stretch 352' / Width 19'
Equipment: American Totalisator Co., Inc., Inside Double Lure

BONITA FT. MYERS CORPORATION
P.O. Box 2567
Bonita Springs, Florida 33923

Greyhound Track - Bonita Springs, Florida
108 Racing Days - December 26, 1986 to May 2, 1987 - 159 Performances

OFFICERS

Paul Lewin, President
Pete Wedeles, Assistant Secretary/Treasurer
Fred Havenick, V.P./Secretary

DIRECTORS

Paul Lewin
Pete Wedeles
Fred Havenick

Distribution Of Handle	
Total Paid To Public	\$ 38,602,593
Total For State	3,913,203
Total For Track/Fronton	<u>5,837,874</u>
Grand Total Handle	<u>\$ 48,353,670</u>

Other State Income	
Admission Tax	\$ 82,337
Occupational Licenses	6,408
Total Other State Income	<u>\$ 88,745</u>

Average Performance: \$ 304,111
Average Wager Per Capita-Based On Taxable Admissions: \$ 90
Average Paid Attendance Per Performance: 3,373

Total Purses Paid: 1986-1987 Season \$ 1,481,336
Seating Capacity: 3,500 - Parking: 2,700 Spaces
Track: Length 1320' / Stretch 469' / Width 18'
Equipment: Autotote, Ltd., Inside Single Lure

INVESTMENT CORP. OF PALM BEACH

Congress Avenue & Belvedere Road, West Palm Beach, Florida 33409

Greyhound Track - West Palm Beach, Florida
106 Racing Days - October 23, 1986 to April 25, 1987 - 159 Performances

OFFICERS

Patrick J. Rooney, President
John J. Rooney, Vice President
Daniel M. Rooney, Treasurer
Timothy J. Rooney, Vice President
Arthur J. Rooney, Jr., Secretary
Arthur J. Laughlin, Assistant Treasurer/Assistant Secretary

DIRECTORS

John J. Rooney
Daniel M. Rooney
Patrick J. Rooney
Arthur J. Rooney, Jr.
Timothy J. Rooney
Arthur J. Rooney, Sr.

Distribution Of Handle	
Total Paid To Public	\$ 54,464,611
Total For State	5,530,186
Total For Track/Fronton	<u>8,291,869</u>
Grand Total Handle	<u>\$ 68,286,666</u>

Other State Income	
Admission Tax	\$ 73,105
Occupational Licenses	10,645
Kennel Names	200
Total Other State Income	<u>\$ 83,950</u>

Average Performance: \$ 429,476
Average Wager Per Capita-Based On Taxable Admissions: \$ 105
Average Paid Attendance Per Performance: 4,079

Total Purses Paid: 1986-1987 Season \$ 2,093,388
Seating Capacity: 4,100 - Parking: 3,400 Spaces
Track: Length 1320' / Stretch 350' / Width 20'
Equipment: Autotote, Ltd., Inside Single Lure

INVESTMENT CORP. OF SOUTH FLORIDA
P. O. Box 2007 Hollywood, Fla 33022

Greyhound Track - Hollywood, Florida
105 Racing Days - December 26, 1986 to April 27, 1987 - 157 Performances

OFFICERS

Bernard Hartman, President

Herbert Tyner, Vice President/Secretary

DIRECTORS

Herbert Tyner
Bernard Hartman

Walter Muller

Distribution Of Handle	
Total Paid To Public	\$ 88,258,012
Total For State	9,031,948
Total For Track/Fronton	13,164,990
Grand Total Handle	<u>\$ 110,454,950</u>

Other State Income	
Admission Tax	\$ 104,063
Occupational Licenses	9,395
Kennel Names	850
Total Other State Income	<u>\$ 114,308</u>

Average Performance: \$ 703,535
Average Wager Per Capita-Based On Taxable Admissions: \$ 119
Average Paid Attendance Per Performance: 5,910

Total Purses Paid: 1986-1987 Season \$ 2,985,879
Seating Capacity: 9,000 - Parking: 5,000 Spaces
Track: Length 1372' / Stretch 300' / Width 22'
Equipment: Autotote, Ltd., Inside Single Lure

JACKSONVILLE KENNEL CLUB, INC.
P.O. Box 41309, Jacksonville, Florida 32203

Greyhound Track - Jacksonville, Florida
105 Racing Days - September 5, 1986 to May 16, 1987 - 143 Performances
57 Racing Days - July 1, 1986 to September 4, 1986 - 78 Performances

OFFICERS

James J. Patton, Chairman Of The Board
William H. Johnston, Sr., Vice President
John C. Howell, Assistant Treasurer

Howard I. Korman, President
Charles W. Bidwill, Secretary/Treasurer
Robert J. Pitoccelli, Assistant Secretary

DIRECTORS

James J. Patton
William R. Burnett
Charles W. Bidwill
John C. Howell

Lucille Patton
Robert J. Pitoccelli
William H. Johnston

Distribution Of Handle	
Total Paid To Public	\$ 57,818,307
Total For State	5,384,344
Total For Track/Fronton	8,500,359
Grand Total Handle	<u>\$ 71,703,010</u>

Other State Income	
Admission Tax	\$ 78,276
Occupational Licenses	5,707
Kennel Names	500
Total Other State Income	<u>\$ 84,483</u>

Average Performance: \$ 324,448
Average Wager Per Capita-Based On Taxable Admissions: \$ 113
Average Paid Attendance Per Performance: 2,867

Total Purses Paid: 1986-1987 Season \$ 1,470,847
Seating Capacity: 4,000 - Parking: 3,000 Spaces
Track: Length 1320' / Stretch 586' / Width 20'
Equipment: Autotote Ltd., Inside Single Lure

JEFFERSON COUNTY KENNEL CLUB, INC.
P.O. Box 400 Monticello, Florida 32344

Greyhound Track - Monticello, Florida
54 Racing Days - September 5, 1986 to June 30, 1987 - 64 Performances
56 Racing Days - July 1, 1986 to September 4, 1986 - 67 Performances

OFFICERS

Nathaniel W. Polak, Chairman of the Board
Steve Andris, President/Secretary/Treasurer

Roland D. Wagner, Vice President

DIRECTORS

John E. Petersen
Charles R. Hart
Roland D. Wagner

Nathaniel W. Polak
Steve Andris
W. C. Hawkins

Distribution Of Handle
Total Paid To Public
Total For State
Total For Track/Fronton
Grand Total Handle

\$ 14,746,173
1,383,391
2,376,584
\$ 18,506,148

Other State Income
Admission Tax
Occupational Licenses
Kennel Names
Total Other State Income

\$ 22,695
7,404
600
\$ 30,699

Average Performance: \$ 141,268
Average Wager Per Capita-Based On Taxable Admissions \$ 104
Average Paid Attendance Per Performance: 1,361

Total Purses Paid: 1986-1987 Season \$ 547,602
Seating Capacity: 1,800 - Parking: 1,900 Spaces
Track: Length 1426' / Stretch 361' / Width 20'
Equipment: American Totalizator Co., Inc., Inside Single Lure

ORANGE PARK KENNEL CLUB, INC.

P.O. Box 41309, Jacksonville, Florida 32203

Greyhound Track - Jacksonville, Florida
107 Racing Days - November 17, 1986 to March 20, 1987 - 143 Performances

OFFICERS

Howard I. Korman, President
Charles W. Bidwill, Secretary/Treasurer
John C. Howell, Assistant Treasurer

William H. Johnston, Sr., Vice-President
James J. Patton, Chairman of the Board
Robert J. Pitoccelli, Assistant Secretary

DIRECTORS

John C. Howell
Charles W. Bidwill
William R. Burnett
Robert J. Pitoccelli

James J. Patton
William H. Johnston
Lucille Patton

Distribution Of Handle
Total Paid To Public
Total For State
Total For Track/Fronton
Grand Total Handle

\$ 38,313,107
3,577,938
5,624,517
\$ 47,515,562

Other State Income
Admission Tax
Occupational Licenses
Kennel Names
Total Other State Income

\$ 49,435
2,583
50
\$ 52,068

Average Performance: \$ 332,277
Average Wager Per Capita-Based On Taxable Admissions: \$ 119
Average Paid Attendance Per Performance: 2,785

Total Purses Paid: 1986-1987 Season \$ 1,448,083
Seating Capacity: 3,500 - Parking: 3,000 Spaces
Track: Length 1320' / Stretch 577' / Width 20'
Equipment: Autotote, Ltd., Inside Single Lure

PENSACOLA GREYHOUND TRACK, INC.
P.O. Box 12824, Pensacola, Florida 32575-2824

Greyhound Track - Pensacola, Florida
73 Racing Days - September 5, 1986 to June 30, 1987 - 95 Performances
47 Racing Days - July 1, 1986 To September 5, 1986 - 63 Performances

OFFICERS

Joseph H. Wilson, Jr. President
Aldon Smith, Secretary

Joseph C. Martin, Treasurer

DIRECTORS

Joseph H. Wilson
Aldon Smith
Joseph C. Martin

Perrine Palmer
Lum Morrison
Herman M. Maisel

Distribution Of Handle	
Total Paid To Public	\$ 16,219,852
Total For State	1,504,942
Total For Track/Fronton	2,593,537
Grand Total Handle	<u>\$ 20,318,331</u>

Other State Income	
Admission Tax	\$ 25,813
Occupational Licenses	12,990
Kennel Names	950
Total Other State Income	<u>\$ 39,753</u>

Average Performance: \$ 128,597
Average Wager Per Capita-Based On Taxable Admissions: \$ 86
Average Paid Attendance Per Performance: 1,491

Total Purses Paid: 1986-1987 Season \$ 752,336
Seating Capacity: 2,000 Parking: 2,500 Spaces
Track: Length 1320' / Stretch 546' / Width 23'
Equipment: American Totalisator Co., Inc., Inside Single Lure

ST. PETERSBURG KENNEL CLUB, INC.

10490 Gandhi Boulevard, St. Petersburg, Florida 33702

Greyhound Track - St. Petersburg, Florida
103 Racing Days - January 6, 1987 to May 7, 1987 - 155 Performances

OFFICERS

A. V. Weaver, Jr., President/Chairman Of The Board
Vey O. Weaver, Vice President Stephen P. Hlas, Asst. Treasurer/Asst. Secretary

DIRECTORS

Patricia C. Baynard
Loughridge
Harry M. Piper
Mary Margaret Winning

Glenn E.
A. V. Weaver, Jr.
Lynn Andrews

Distribution Of Handle	
Total Paid To Public	\$ 88,023,041
Total For State	8,455,300
Total For Track/Fronton	12,650,088
Grand Total Handle	<u>\$ 109,128,429</u>

Other State Income	
Admission Tax	\$ 142,196
Occupational Licenses	10,282
Kennel Names	350
Total Other State Income	<u>\$ 152,828</u>

Average Performance: \$ 704,054
Average Wager Per Capita-Based On Taxable Admissions: \$ 110
Average Paid Attendance Per Performance: 6,393.00

Total Purses: 1986-1987 Season \$ 3,306,967
Seating Capacity: 8,300 - Parking: 5,250 Spaces
Track: Length 1320' / Stretch 458' / Width 21'
Equipment: Autotote, Ltd., Inside Single Lure

SANFORD ORLANDO KENNEL CLUB, INC.
Longwood, Florida 32750

Greyhound Track - Longwood, Florida
105 Racing Days - December 26, 1986 to May 2, 1987 - 159 Performances

OFFICERS

Jerry Collins, Chairman of The Board/General Manager
Katherine A. Nichols, President Mary M. Kelly, Exec. V.P./Treasurer
Jack G. Collins, Secretary/V.P./Track Manager
Catherine M. Kelly, Asst. Secretary/Asst. Treasurer

DIRECTORS

Catherine M. Kelly Jerry Collins
Katherine A. Nichols Mary M. Kelly
Jack G. Collins Margaret C. Murphy

Distribution Of Handle
Total Paid To Public \$ 47,244,458
Total For State 4,771,573
Total For Track/Fronton 7,249,386
Grand Total Handle \$ 59,265,417

Other State Income
Admission Tax \$ 70,425
Occupational Licenses 6,448
Kennel Names 700
Total Other State Income \$ 77,573

Average Performance : \$ 372,738
Average Wager Per Capita-Based on Taxable Admissions: \$ 109
Average Paid Attendance Per Performance: 3,407

Total Purses Paid: 1986-1987 Season \$ 1,825,006
Seating Capacity: 4,000 - Parking: 4,000 Spaces
Track: Length 1320' / Stretch 322' / Width 18'
Equipment: Autotote, Ltd., Inside Double Lure

SARASOTA KENNEL CLUB, INC.

5400 Old Bradenton Road, Sarasota, Florida 33580

Greyhound Track - Sarasota, Florida
44 Racing Days - September 5, 1986 to June 30, 1987 - 67 Performances
57 Racing Days - July 1, 1986 To September 4, 1986 - 86 Performances

OFFICERS

Jerry Collins, Chairman of the Board/Treasurer/Secretary Jack Collins, President

DIRECTORS

Jack Collins Sherwin Simmons
Jerry Collins

Distribution Of Handle
Total Paid To Public \$ 42,379,022
Total For State 4,271,690
Total For Track/Fronton 6,495,337
Grand Total Handle \$ 53,146,049

Other State Income
Admission Tax \$ 58,029
Occupational Licenses 13,299
Kennel Names 300
Total Other State Income \$ 71,628

Average Performance: \$ 347,360
Average Wager Per Capita-Based On Taxable Admissions: \$ 115
Average Paid Attendance Per Performance: 3,022

Total Purses Paid: 1986-1987 Season \$ 1,547,803
Seating Capacity: 3,500 - Parking: 5,000 Spaces
Track: Length 1320' / Stretch 330' / Width 22'
Equipment: Autotote, Ltd., Inside Double Lure

SEMINOLE RACING, INC.
2000 Seminola Boulevard, Casselberry, Florida 32707

Greyhound Track - Casselberry, Florida
50 Racing Days - May 4, 1987 to June 30, 1987 - 75 Performances
54 Racing Days - July 1, 1986 to September 1, 1986 - 81 Performances

OFFICERS

Stephen B. Manion, President
Nelson H. Kraus, Secretary

Victor E. Zast, Vice-President

DIRECTORS

Frank Michels
Victor E. Zast

Nelson H. Kraus

Distribution Of Handle	
Total Paid To Public	\$ 29,624,735
Total For State	2,950,922
Total For Track/Fronton	4,598,396
Grand Total Handle	<u>\$ 37,174,053</u>

Other State Income	
Admission Tax	\$ 55,680
Occupational Licenses	11,793
Kennel Names	1,350
Total Other State Income	<u>\$ 68,823</u>

Average Performance: \$ 238,295
Average Wager Per Capita-Based On Taxable Admissions: \$ 112
Average Paid Attendance Per Performance: 2,124

Total Purses Paid: 1986-1987 Season \$ 1,187,478
Seating Capacity: 4,500 - Parking: 4,000 Spaces
Track: Length 1355' / Stretch 673' / Width 10-23'
Equipment: Autotote, Ltd., Inside Single Lure

SEMINOLE RACING, INC. d/b/a
DAYTONA BEACH KENNEL CLUB

2201 Volusia Avenue, Daytona Beach, Florida 32014

Greyhound Track - Daytona Beach, Florida
47 Racing Days - May 1, 1987 to June 30, 1987 - 69 Performances
81 Racing Days - July 1, 1986 to October 20, 1986 - 119 Performances

OFFICERS

Stephen B. Manion, President
Frank Michels, Vice President/Treasurer

Thomas Blayney, Vice President
Nelson H. Kraus, Secretary

DIRECTORS

Frank Michels
Nelson H. Kraus

Stephen B. Manion

Distribution Of Handle	
Total Paid To Public	\$ 29,176,344
Total For State	2,881,318
Total For Track/Fronton	4,499,923
Grand Total Handle	<u>\$ 36,557,585</u>

Other State Income	
Admission Tax	\$ 53,357
Occupational Licenses	9,151
Kennel Names	100
Total Other State Income	<u>\$ 62,608</u>

Average Performance \$ 194,455
Average Wager Per Capita-Based On Taxable Admissions \$ 87
Average Paid Attendance Per Performance: 2,241

Total Purses Paid: 1986-1987 Season \$ 1,104,698
Seating Capacity: 3,100 - Parking: 2,000 Spaces
Track: Length 1320' / Stretch 367' / Width 22'
Equipment: Autotote Ltd., Inside Single Lure

WASHINGTON COUNTY KENNEL CLUB, INC.
Highway 79, Ebro, Florida 32437

Greyhound Track - Ebro, Florida
54 Racing Days - September 5, 1986 to June 30, 1987 - 66 Performances
55 Racing Days - July 1, 1986 to September 4, 1986 - 74 Performances

OFFICERS

Luther F. Hess, Chairman Of The Board/President
Robert E. Hater II, Vice President
Paul Dervaes, Vice President
Sidney Summers, Secretary
Craig R. Stevens, Assistant Treasurer
John M. Hater, Vice President
James P. Hater, Treasurer
Harry L. Hess, Assistant Treasurer
Stockton R. Hess, Asst. Secretary

DIRECTORS

John M. Hater
Robert E. Hater II
Stockton R. Hess
Craig R. Stevens
Luther F. Hess
Paul Dervaes
Sidney Summers
Harry L. Hess
James P. Hater

Distribution Of Handle
Total Paid To Public \$ 14,903,783
Total For State 1,392,134
Total For Track/Fronton 2,393,895
Grand Total Handle \$ 18,689,812

Other State Income
Admission Tax \$ 23,751
Occupational Licenses 9,923
Kennel Names 700
Total Other State Income \$ 34,374

Average Performance: \$ 133,499
Average Wager Per Capita-Based On Taxable Admissions: \$ 99
Average Paid Attendance Per Performance: 1,352

Total Purses Paid: 1986-1987 Season \$ 578,573
Seating Capacity: 2,500 - Parking: 750 Spaces
Track: Length 1344' / Stretch 333' / Width 18'
Equipment: Autotote, Ltd., Inside Single Lure

WEST FLAGLER ASSOCIATES, LTD.
401 NW 38 Court, Miami, Florida 33126

Greyhound Track - Miami, Florida
48 Racing Days - September 5, 1986 to October 30, 1986 - 73 Performances
1 Racing Day - July 1, 1986 to July 1, 1986 - 2 Performances

OFFICERS

Southwest Florida Ent., Inc., General Partner
Barbara Havenick, General Partner
Isabelle Amdur, General Partner
Florence Hecht, General Partner

Distribution Of Handle
Total Paid To Public \$ 32,658,917
Total For State 3,339,026
Total For Track/Fronton 4,944,145
Grand Total Handle \$ 40,942,088

Other State Income
Admission Tax \$ 31,996
Occupational Licenses 4,370
Kennel Names 400
Total Other State Income \$ 36,766

Average Performance: \$ 545,895
Average Wager Per Capita-Based On Taxable Admissions: \$ 138
Average Paid Attendance Per Performance: 3,946

Total Purses Paid: 1986-1987 Season \$ 2,262,552
Seating Capacity: 13,000 - Parking: 6,700 Spaces
Track: Length 1320' / Stretch 333' / Width 21'
Equipment: American Totalisator Co., Inc., Inside Double Lure.

DANIA JAI-ALAI DIVISION
301 East Dania Beach Boulevard, Dania, Florida 33004

Jai-Alai - Dania, Florida
110 Playing Days - November 11, 1986 to April 14, 1987 - 159 Performances

OFFICERS

S.F. Snyder, President
O.P. Bell, Sr., Vice President/Secretary

D.R. Knox, Vice President & General Manager
F.S. Chase, Vice President/Comptroller

DIRECTORS

D.R. Knox
O.P. Bell

S.F. Snyder

Distribution of Handle
Total Paid to Public
Total for State
Total for Track/Fronton
Grand Total Handle

\$ 41,164,643
3,726,998
6,587,897
\$ 51,479,538

Other State Income
Admission Tax
Occupational Licenses
Total Other State Income

\$ 81,949
1,465
\$ 83,414

Average Performance: \$ 323,771
Average Wager per Capita - Based on Taxable Admissions: \$ 82
Average Paid Attendance per Performance: 3,968

Players Compensation: 1986-1987 Season \$ 1,052,454
Seating Capacity: 5,600 - Parking: 2,600 Spaces
Court: Overhead 45' / Length 178' / Width 50'
Equipment: American Totalisator Co., Inc.

FLORIDA JAI-ALAI, INC.

Post Office Box 107, Fern Park, Florida 32730

Jai-Alai - Fern Park, Florida
105 Playing Days - August 27, 1986 to December 29, 1986 159 Performances
18 Playing Days - June 10, 1987 to June 30, 1987 27 Performances

OFFICERS

Hort A. Soper, President
Roberta P. Stockham, Secretary

Elizabeth A. Calder, Vice-President

DIRECTORS

William Modahl
Elizabeth A. Calder

Hort A. Soper

Distribution of Handle
Total Paid to Public
Total for State
Total for Track/Fronton
Grand Total Handle

\$ 23,820,904
2,177,264
3,979,386
\$ 29,977,554

Other State Income
Admission Tax
Occupational Licenses
Total Other State Income

\$ 32,109
4,195
\$ 36,304

Average Performance: \$ 161,170
Average Wager Per Capita-Based on Taxable Admissions: \$ 93
Average Paid Attendance per Performance: 1,726

Players Compensation: 1986-1987 Season \$ 755,963
Seating Capacity: 3,073 - Parking: 1,500 Spaces
Court: Overhead 48' / Length 180' / Width 50'
Equipment: Autotote, Ltd.

FORT PIERCE JAI-ALAI
Rural Route # 7, Ft. Pierce, Florida 33450

Jai-Alai - Ft. Pierce, Florida
96 Playing Days -- January 9, 1987 to June 29, 1987 145 Performances
38 Playing Days -- July 2, 1986 to September 13, 1986 58 Performances

OFFICERS

Richard P. Donovan, President
Rudy Angulo, Treasurer

Guillermo J. Diaz, Vice President
H. Paul Rico, Secretary

Distribution of Handle

Total Paid to Public	\$ 18,544,645
Total for State	1,618,127
Total for Track/Fronton	3,176,984
Grand Total Handle	<u>\$ 23,339,756</u>

Other State Income

Admission Tax	\$ 44,350
Occupational Licenses	4,295
Total Other State Income	<u>\$ 48,645</u>

Average Performance: \$ 114,974

Average Wager Per Capita-Based on Taxable Admissions: \$ 84

Average Paid Attendance per Performance: 1,366

Players Compensation: 1986-1987 Season \$ 1,243,000

Seating Capacity: 2,420 - Parking: 2,000 Spaces

Court: Overhead 40' / Length 176' / Width 50'

Equipment: Autotote, Ltd.

GOLDEN CROWN CORPORATION

P.O. Box 388, Quincy, Florida 32351

Jai-Alai - Quincy, Florida
109 Playing Days -- October 30, 1986 to May 9, 1987 137 Performances

OFFICERS

Hort A. Soper II, President
Roberta Stockham, Secretary

Elizabeth A. Calder, Vice President

DIRECTORS

William Modahl
Elizabeth A. Calder

Hort A. Soper II

Distribution of Handle

Total Paid to Public	\$ 9,624,650
Total for State	780,249
Total for Track/Fronton	1,710,122
Grand Total Handle	<u>\$ 12,115,021</u>

Other State Income

Admission Tax	\$ 16,626
Occupational Licenses	1,530
Total Other State Income	<u>\$ 18,156</u>

Average Performance: \$ 88,431

Average Wager Per Capita-Based on Taxable Admissions: \$ 95

Average Paid Attendance per Performance: 934

Players Compensation: 1986-1987 Season \$ 644,801

Seating Capacity: 2,100 - Parking: 1,100 Spaces

Court: Overhead 48' / Length 180' / Width 50'

Equipment: Autotote, Ltd.

MIAMI JAI-ALAI
3500 N.W. 37 Avenue, Miami, Florida 33142

Jai-Alai-Miami, Florida
105 Playing Days - December 17, 1986 to April 25, 1987 - 159 Performances

OFFICERS

Richard P. Donovan, President

H. Paul Rico, Vice President

Distribution of Handle	
Total Paid to Public	\$ 49,441,085
Total for State	4,463,328
Total for Track/Fronton	<u>7,946,417</u>
Grand Total Handle	<u>\$ 61,850,830</u>

Other State Income	
Admission Tax	\$ 97,916
Occupational Licenses	<u>1,165</u>
Total Other State Income	<u>\$ 99,081</u>

Average Performance: \$ 388,999
Average Wager per Capita-Based on Taxable Admission: \$ 98
Average Paid Attendance per Performance: 3,950

Players Compensation: 1986-1987 Season \$ 1,778,000.00
Seating Capacity: 5,243 - Parking: 3,500 Spaces
Court: Overhead 40' / Length 176' / Width 50'
Equipment: Autotote, Ltd.

OCALA JAI-ALAI
P.O. Box 548, Orange Lake, Florida 32681

Jai-Alai - Orange Lake, Florida
21 Playing Days - June 1, 1987 to June 29, 1987 - 33 Performances
66 Playing Days - July 2, 1986 to October 24, 1986 - 100 Performances

OFFICERS

Richard P. Donovan, President
Thomas J. Contreras, General Manager

Rudy Angulo, Controller
Giles L. Ellis, Vice President

Distribution of Handle	
Total Paid to Public	\$ 10,302,572
Total for State	868,390
Total for Track/Fronton	<u>1,793,314</u>
Grand Total Handle	<u>\$ 12,964,276</u>

Other State Income	
Admission Tax	\$ 34,665
Occupational Licenses	<u>3,955</u>
Total Other State Income	<u>\$ 38,620</u>

Average Performance: \$ 97,476
Average Wager per Capita-Based on Taxable Admissions: \$ 82
Average Paid Attendance per Performances: 1,186

Players Compensation: 1986-1987 Season \$ 1,078,000
Seating Capacity: 2,002 - Parking: 1,100 Spaces
Court: Overhead 40' / Length 176' / Width 40'
Equipment: Autotote, Ltd.

SPORTS PALACE, INC.
P.O. Box 1257 E G, Melbourne, Florida 32935

Jai-Alai - Melbourne, Florida
16 Playing Days - January 1, 1987 to January 19, 1987 24 Performances
88 Playing Days - September 13, 1986 to December 31, 1986 133 Performances

OFFICERS

Milton J. Roth, Treasurer/President

Harry J. Olsen, Vice President/Secretary

DIRECTORS

Milton J. Roth
Harry J. Olsen

Nelson Kraus
Victor E. Zast

Distribution of Handle

Total paid to Public	\$ 12,378,457
Total for State	1,076,860
Total for Track/Fronton	2,122,552
Grand Total Handle	<u>\$ 15,577,869</u>

Other State Income

Admission Tax	\$ 26,937
Occupational Licenses	1,538
Total Other State Income	<u>\$ 28,475</u>

Average Performance: \$ 99,222

Average Wager per Capita-Based on Taxable Admissions: \$ 75

Average Paid Attendance per Performance: 1,320

Players Compensation: 1986-1987 Season \$ 552,425
Seating Capacity: 2,343 - Parking: 1,700 Spaces
Court: Overhead 48' / Length 176' / Width 50'
Equipment: American Totalisator Co., Inc.

SUMMER JAI-ALAI

3500 N.W. 37th Avenue, Miami, Florida 33142

Jai-Alai - Miami, Florida
41 Playing Days - May 13, 1987 to June 29, 1987 62 Performances
64 Playing Days - July 2, 1986 to September 13, 1986 97 Performances

OFFICERS

Richard P. Donovan, President

H. Paul Rico, Vice President

Distribution of Handle

Total Paid to Public	\$ 40,316,233
Total for State	3,610,552
Total for Track/Fronton	6,500,956
Grand Total Handle	<u>\$ 50,427,741</u>

Other State Income

Admission Tax	\$ 74,808
Occupational Licenses	6,525
Total Other State Income	<u>\$ 81,333</u>

Average Performance: \$ 317,156

Average Wager per Capita-Based on Taxable Admissions: \$ 99

Average Paid Attendance per Performance: 3,219

Players Compensation: 1986-1987 Season \$ 1,647,000
Seating Capacity: 5,243 - Parking: 3,500 Spaces
Court: Overhead 40' / Length 176' / Width 50'
Equipment: Autotote, Ltd.

SUMMERSPORT ENTERPRISES, LTD.
301 Dania Blvd., Dania, Florida 33004

Jai-Alai - Dania, Florida
16 Playing Days - June 4, 1987 to June 30, 1987 16 Performances
88 Playing Days - July 1, 1986 to November 8, 1986 88 Performances

OFFICERS

S.F. Snyder, President
D.R. Knox, Vice President/General Manager

O. P. Bell, Sr., Vice President/Secretary
F. S. Chase, Vice President/Comptroller

PARTNERS

Aragon Group, Inc. - Managing General Partner

Castleton, Inc. - General Partner

Distribution of Handle	
Total Paid to Public	\$ 29,772,176
Total for State	2,700,716
Total for Track/Fronton	4,761,430
Grand Total Handle	<u>\$ 37,234,322</u>

Other State Income	
Admission Tax	\$ 52,295
Occupational Licenses	6,736
Total Other State Income	<u>\$ 59,031</u>

Average Performance: \$ 358,022
Average Wager per Capita-Based on Taxable Admissions: \$ 91
Average Paid Attendance per Performance: 3,916

Players Compensation: 1986-1987 Season \$ 709,875
Seating Capacity: 5,600 - Parking: 2,600 Spaces
Court: Overhead 45' / Length 178' / Width 50'
Equipment: American Totalisator Co., Inc.

TAMPA JAI-ALAI

5125 South Dale Mabry Hwy., Tampa, Florida 33611-3597

Jai-Alai - Tampa, Florida
124 Playing Days - January 9, 1987 to June 30, 1987 - 188 Performances

OFFICERS

Richard P. Donovan, President/Treasurer
Rudy Angulo, Controller

Giles L. Ellis Jr., Vice President/General Mgr.

Distribution of Handle	
Total Paid to Public	\$ 40,857,542
Total for State	3,871,917
Total for Track/Fronton	6,681,131
Grand Total Handle	<u>\$ 51,410,590</u>

Other State Income	
Admission Tax	\$ 82,782
Occupational Licenses	5,518
Total Other State Income	<u>\$ 88,300</u>

Average Performance: \$ 273,461
Average Wager per Capita-Based on Taxable Admissions \$ 80
Average Paid Attendance per Performance: 3,423

Players Compensation: 1986-1987 Season \$ 2,569,439
Seating Capacity: 3,300 - Parking: 3,500 Spaces
Court: Overhead 40' / Length 176' / Width 51'
Equipment: Autotote, Ltd.

THE FRONTON, INC.
1415 45th Street, West Palm Beach, Florida 33407

Jai-Alai - West Palm Beach, Florida
108 Playing Days -- November 7, 1986 to April 11, 1987 159 Performances

OFFICERS

Arthur W. Silvester, Sr., President
Arthur W. Silvester, Jr., Vice President/Secretary

Renee T. Silvester, Treasurer

Directors

Arthur W. Silvester
Renee T. Silvester

Arthur W. Silvester, Jr.

Distribution of Handle	
Total Paid to Public	\$ 32,747,398
Total for State	3,062,232
Total for Track/Fronton	5,388,226
Grand Total Handle	<u>\$ 41,197,856</u>

Other State Income	
Admission Tax	\$ 45,900
Occupational Licenses	5,919
Total Other State Income	<u>\$ 51,819</u>

Average Performance: \$ 259,106
Average Wager per Capita-Based on Taxable Admission: \$ 90
Average Paid Attendance per Performance: 2,887

Players Compensation: 1986-1987 Season \$ 1,537,215
Seating Capacity: 5,144 - Parking: 3,000 Spaces
Court: Overhead 50' / Length 170' / Width 55'
Equipment: United Totalisator Co.

VOLUSIA JAI-ALAI, INC.
P.O. Box 2630, Daytona Beach, Florida 32015

Jai-Alai - Daytona Beach, Florida
118 Playing Days - January 23, 1987 to June 30, 1987 164 Performances
25 Playing Days - July 2, 1986 to August 4, 1986 35 Performances

OFFICERS

Milton J. Roth, President/Treasurer

Harry J. Olsen, Vice President/Secretary

DIRECTORS

Nelson Kraus
Harry J. Olsen

Milton J. Roth
Victor E. Zast

Distribution of Handle	
Total Paid to Public	\$ 21,501,338
Total for State	1,894,556
Total for Track/Fronton	3,652,010
Grand Total Handle	<u>\$ 27,047,905</u>

Other State Income	
Admissions Tax	\$ 47,830
Occupational Licenses	5,335
Total Other State Income	<u>\$ 53,165</u>

Average Performance: \$ 135,919
Average Wager per Capita-Based on Taxable Admissions: \$ 73
Average Paid Attendance per Performance: 1,866

Players Compensation: 1986-1987 Season \$ 839,707
Seating Capacity: 4,465 - Parking: 2,079 Spaces
Court: Overhead 48' / Length 176' / Width 50'
Equipment: American Totalisator Co., Inc.

CALDER RACE COURSE, INC.
21001 N.W. 27 Avenue, Miami, Florida 33055

Thoroughbred Track - Miami, Florida
22 Racing Days - May 30, 1987 to June 28, 1987 22 Performances
97 Racing Days - July 2, 1986 to November 9, 1986 97 Performances

OFFICERS

James H. Binger, Jr., Chairman of the Board
Kenneth Noe, Jr., President

Charles Diaz, Treasurer & Comptroller
Henry H. Taylor, Jr., Secretary

DIRECTORS

Henry H. Taylor, Jr.
R. Bunn Gautier, Jr.
Wheelock Whitney
Kenneth Noe, Jr.

Lowell T. Hughes
James H. Binger
Richard P. Anderson
Harry T. Mangurian, Jr.

Distribution of Handle	
Total Paid to Public	\$ 112,495,125
Total for State	3,681,596
Total for Track/Fronton	26,678,959
Breaks	804,787
Grand Total Handle	<u>\$ 143,660,467</u>

Other State Income	
Admission Tax	\$ 166,565
Occupational Licenses	124,473
Stable Names	16,800
Total Other State Income	<u>\$ 307,838</u>

Average Performance: \$ 1,207,231
Average Wager per Capita-Based on Taxable Admissions: \$ 195
Average Paid Attendance per Performance: 6,198

Total Purses Paid: 1986-1987 Season \$ 13,984,112
Seating Capacity: 13,500 - Parking: 10,600 Spaces
Track: Length 6600' / Stretch 990' / Width 65'
Equipment: American Totalisator Co., Inc.

GULFSTREAM PARK RACING ASSOCIATION, INC.
Hallandale, Florida 33009

Thoroughbred Track - Hallandale, Florida
65 Racing Days - March 7, 1987 to May 28, 1987 65 Performances

OFFICERS

Douglas Donn, President/Chief Executive Officer
Frank J. Pepper, Jr., Vice President
Mary Anna Fowler, Treasurer
David Romanik, Assistant Secretary

Jack Blair, Vice-President
Donn Flipse, V.P./Assistant Treasurer
Fred Flipse, Secretary

DIRECTORS

Frank J. Pepper, Jr.
Donn Flipse
Bonnie Jones
Arthur I. Appleton
Martha O. Appleton
Douglas Donn

Fred Flipse
Helen D. Flipse
Harrison Eiteljorg
James K. Appleton
Jack Blair
Mary Anna Fowler

Distribution of Handle	
Total Paid to Public	\$ 94,298,217
Total for State	3,306,410
Total for Track/Fronton	19,441,133
Florida Thoroughbred Breeders Association	
Breaks	621,210
Grand Total Handle	<u>\$ 117,666,970</u>

Other State Income	
Admissions Tax	\$ 164,440
Occupational Licenses	54,985
Stable Names	5,275
Total Other State Income	<u>\$ 224,700</u>

Average Performance: \$ 1,810,261
Average Wager per Capita-Based on Taxable Admissions: \$ 213
Average Paid Attendance per Performance: 8,506

Total Purses Paid: 1986-1987 Season \$ 10,201,040
Seating Capacity: 19,900 - Parking: 15,000 Spaces
Track: Length 5280' / Stretch 952' / Width 80'
Equipment: American Totalisator Co., Inc.

HIALEAH, INC.
105 E. 21 St., Hialeah, Florida 33020

Thoroughbred Track - Hialeah, Florida
50 Racing Days - January 8, 1987 to March 6, 1987 50 Performances

OFFICERS

John J. Brunetti, Pres./Chairman of the Board
John J. Brunetti, Jr., V.P./Secretary
Monroe Bober, Treasurer/Assistant Secretary

DIRECTORS

John J. Brunetti
Richard E. Gerstein
John W. Galbreath
Thomas P. Tatham
Anna G. Brunetti
Harold Snowden
Raul L. Martinez
John J. Brunetti, Jr.

Distribution of Handle	
Total Paid of Public	\$ 80,140,129
Total for State	3,115,317
Total for Track/Fronton	17,831,413
Breaks	490,934
Grand Total Handle	<u>\$ 101,577,793</u>

Other State Income	
Admission Tax	\$ 130,489
Occupational Licenses	37,222
Stable Names	5,890
Total Other State Income	<u>\$ 173,601</u>

Average Performance: \$ 2,031,556
Average Wager per Capita-Based on Taxable Admissions: \$ 241
Average Paid Attendance per Performance: 8,429

Total Purses Paid: 1986-1987 Season \$ 8,626,320
Seating Capacity: 30,000 - Parking: 14,000 Spaces
Track: Length 5940' / Stretch 1095' / Width 90'
Equipment: Autotote, Ltd.

TAMPA BAY DOWNS, INC.
P.O. Box E, Oldsmar, Florida 33557

Thoroughbred Track - Oldsmar, Florida
90 Racing Days - December 3, 1986 to March 9, 1987 90 Performances

OFFICERS

Stella F. Thayer, President/Chairman of the Board/Treasurer
Howell Ferguson, Vice-President/Secretary

DIRECTORS

Stella F. Thayer
Howell Ferguson

Distribution of Handle	
Total Paid to Public	\$ 29,994,187
Total for State	126,148
Total for Track/Fronton	7,959,956
Breaks	243,712
Breaks	6,082
1% of Handle	7,533
Grand Total Handle	<u>\$ 38,337,618</u>

Other State Income	
Admission Tax	\$ 81,371
Occupational Licenses	53,451
Stable Names	4,000
Total Other State Income	<u>\$ 138,822</u>

Average Performance: \$ 425,974
Average Wager per Capita-Based on Taxable Admissions: \$ 113
Average Paid Attendance per Performance: 3,754

Total Purses Paid: 1986-1987 Season \$ 3,689,400
Seating Capacity: 6,500 - Parking: 5,000 spaces
Track: Length 5280' / Stretch 976' / Width 75'
Equipment: American Totalisator Co., Inc.

TROPICAL PARK, INC.
21001 N.W. 27 Avenue, Miami, Florida 33110

Thoroughbred Track - Miami, Florida
50 Racing Days - November 11, 1986 to January 7, 1987 50 Performances

OFFICERS

James H. Binger, Jr., Chairman of the Board
Kenneth Noe, Jr., President

Charles Diaz, Treasurer & Comptroller
Henry H. Taylor, Jr., Secretary

DIRECTORS

James H. Binger, Jr.
Ralph Dechiaro
Henry H. Taylor
J. Louis Levesque

Fred Berens
Kenneth Noe, Jr.
John Ellis

Distribution of Handle	
Total Paid to Public	\$ 51,926,665
Total for State	1,730,552
Total for Track/Fronton	11,890,306
Florida Thoroughbred Breeders Association	360,138
Grand Total Handle	<u>\$ 65,907,661</u>

Other State Income	
Admission Tax	\$ 72,877
Occupational Licenses	43,215
Stable Names	5,300
Total Other State Income	<u>\$ 121,392</u>

Average Performance: \$ 1,318,153
Average Wager per Capita-Based on Taxable Admissions: \$ 203
Average Paid Attendance per Performance: 6,505

Total Purses Paid: 1986 - 1987 Season \$ 5,514,000
Seating Capacity: 13,500 - Parking: 10,600 Spaces
Track: Length 6600' / Stretch 990' / Width 65'
Equipment: American Totalisator Co., Inc.

POMPANO PARK ASSOCIATES, LTD. - HARNESS
1800 S.W. Third Street, Pompano Beach, Florida 33061

Harness Track - Pompano Beach, Florida
120 Racing Days - October 22, 1986 to April 11, 1987 120 Performances

OFFICERS

John A. Cashman, Jr., President
Michael J. Lang, Treas./V.P. Finance

Harold S. Duris, General Manager/Executive V.P.
Allen J. Finkelson, V.P. of Public Relations

DIRECTORS

John A. Cashman, Jr.

William E. Simon

Distribution of Handle	
Total Paid to Public	\$ 52,587,145
Total for State	1,188,388
Total for Track/Fronton	13,171,525
Break	343,494
Grand Total Handle *	<u>\$ 67,290,552</u>

Other State Income	
Admission Tax	\$ 116,712
Occupational Licenses	106,962
State Names	11,150
Total Other State Income	<u>\$ 234,824</u>

Average Performance: \$ 560,755
Average Wager per Capita-Based on Taxable Admissions: \$ 133
Average Paid Attendance per Performance: 4,214

Total Purses Paid: 1986-1987 Season \$ 6,475,096
Seating Capacity: 8,279 - Parking: 10,000 Spaces
Track: Length 3300' / Stretch 608' / Width 80'
Equipment: United Totalisator Co.

POMPANO PARK ASSOCIATES, LTD. / QUARTER HORSE
1800 S.W. 3rd Street, Pompano Beach, Florida 33061

Quarterhorse Track - Pompano Beach, Florida
26 Racing Days - May 15, 1987 to June 27, 1987 26 Performances
20 Racing Days - July 2, 1986 to August 2, 1986 20 Performances

OFFICERS

John A. Cashman, Jr., President
Michael J. Lang, Treas./V.P. Finance/Secretary
Harold S. Duris, General Manager/Executive V.P.
Allen J. Finkelson, V.P. of Public Relations

DIRECTORS

John A. Cashman, Jr. William E. Simon

Distribution of Handle	
Total Paid to Public	\$ 6,921,851
Total for State	51,400
Total for Track/Fronton	1,768,185
Department of Agriculture	124,085
Grand Total Handle	<u>\$ 8,865,521</u>

Other State Income	
Admission	\$ 11,661
Occupational Licenses	27,045
Stable Names	1,500
Total Other State Income	<u>\$ 40,206</u>

Average Performance: \$ 192,729
Average Wager per Capita-Based on Taxable Admissions: \$ 101
Average Paid Attendance per Performance: 1,900

Total Purses Paid: 1986-1987 Season \$ 1,293,347
Seating Capacity: 8,279 - Parking: 10,000 Spaces
Track: Length 3300' / Stretch 608' / Width 80'
Equipment: United Totalisator Co.

FINANCIAL SECTION

Division of Pari-Mutuel Wagering
Combining Balance Sheet
Governmental Funds
For the Fiscal Year Ended June 30, 1987

	Pari-Mutuel Wagering Trust Fund		Racing Research Trust Fund		TOTALS (Memorandum Only)	
					1987	1986
<u>Assets</u>						
Cash	\$ 2,577	\$	\$	2,577	\$	4,591
Cash in Revolving Fund	600			600		
Cash with State Treasurer	67,463	2,886		70,350		187,903
Investments at Cost	668,790	63,344		732,134		445,471
Due from Other Funds	80,168			80,168		56,929
Accounts Receivable:						
Revenue	570,162			570,162		458,639
Interest	3,004	322		3,326		2,585
Employees	185			185		
Returned Checks	731			731		1070
Total Assets	\$ 1,393,680	\$ 66,553	\$ 1,460,233	\$ 1,157,188		
<u>Liabilities & Fund Balance</u>						
Liabilities:						
Due to Other Funds	\$ 600	\$	\$	600	\$	6,219
Accounts Payable						
Salaries	28,371			28,371		27,131
Other Personal Services	89,275			89,275		82,925
Data Processing	14,829			14,829		37,318
Expense	15,127			15,127		17,555
Operating Capital Outlay						1,847
General Revenue Fund	129,153			129,153		34
General Revenue--Service Charge	88,498	364		88,862		89,738
Trust Funds						
Cancelled Warrants	3,077			3,077		279
Other State Agencies	24,750			24,750		21,003
Total Liabilities	\$ 393,680	\$ 364	\$ 394,044	\$ 284,049		
<u>Fund Balances</u>						
Reserved for Encumbrances	\$ 57,012	\$	\$	57,012	\$	62,291
Unreserved	942,988	66,188		1,009,177		810,849
Total Fund Balance	\$ 1,000,000	\$ 66,188	\$ 1,066,188	\$ 873,139		
Total Liabilities & Fund Balance	\$ 1,393,680	\$ 66,553	\$ 1,066,188	\$ 1,157,188		

Division of Pari-Mutuel Wagering
 Combining Balance Sheet
 Fiduciary Funds
 For the Fiscal Year Ended June 30, 1987

	Tax Collection Trust Fund	General Revenue Agency Fund	Collections for Other State Agencies Agency Fund	TOTALS (Memorandum Only)
<u>Assets</u>				<u>1987</u> <u>1986</u>
Cash	\$ 37,221	\$	\$ 7,636	\$ 37,221 \$ 248,356
Cash with State Treasurer	1,132,286			1,132,286 4,199,579
Due from Other Funds				6,019
Accounts Receivable	3,983,993	4,426,554	158,693	8,410,547 7,937,605
Revenue	734			734 1,218
Returned Checks				
Total Assets	<u>\$ 5,154,234</u>	<u>\$ 4,426,554</u>	<u>\$ 166,329</u>	<u>\$ 8,410,547</u> <u>\$ 12,392,777</u>
 <u>Liabilities & Fund Balance</u>				
<u>Liabilities:</u>				
Due to Other Funds				
Accounts Payable				
General Revenue Fund	\$ 4,149,378	\$ 4,426,554	\$	\$ 8,575,933 \$ 12,137,927
General Revenue--Service Charge	1,004,405			1,004,405 175
Trust Funds				260
Cancelled Warrants	450		166,329	450 254,415
Other State Agencies				
Total Liabilities	<u>\$ 5,154,234</u>	<u>\$ 4,426,554</u>	<u>\$ 166,329</u>	<u>\$ 9,580,788</u> <u>\$ 12,392,777</u>
Fund Balances	\$	\$	\$	\$
Total Liabilities & Fund Balance	<u>\$ 5,154,234</u>	<u>\$ 4,426,554</u>	<u>\$ 166,329</u>	<u>\$ 9,580,788</u> <u>\$ 12,392,777</u>

DEPARTMENT OF BUSINESS REGULATION
 DIVISION OF PARI-MUTUEL WAGERING
 PARI-MUTUEL WAGERING TRUST FUND
 STATEMENT OF REVENUE, EXPENDITURES & CHANGES IN FUND BALANCE
 FOR THE FISCAL YEAR ENDED JUNE 30, 1987 AND 1986

<u>Revenues</u>	<u>Budget</u>	<u>Actual</u>	<u>Variance Favorable (Unfavorable)</u>	<u>1986 Actual</u>
Pari-Mutuel Fees	\$ 5,671,800	\$ 5,703,192	\$ 31,392	\$ 5,549,010
Interest	33,200	35,119	1,919	56,056
Prior Year Refunds	5,800	16,077	10,277	5,735
Miscellaneous	27,100	109,716	82,616	20,629
Total Revenue	\$ 5,737,900	\$ 5,864,104	\$ 126,204	\$ 5,631,430
 <u>Expenditures</u>				
Salaries	\$ 2,375,672	\$ 2,350,640	\$ 25,032	\$ 2,190,069
Other Personal Services	1,524,904	1,227,421	297,483	1,303,532
Expense	704,673	636,491	68,182	555,325
Data Processing	269,457	244,266	25,191	220,011
Purchase of Investments	2,030,000	0	2,030,000	0
Refunds	20,000	609	19,391	1,048
Service Charge to General Revenue	420,000	344,251	75,749	336,886
Operating Capital Outlay	82,027	33,538	48,489	143,883
Certified Forward	62,291	56,582	5,708	124,383
Florida Department of Law Enforcement	266,357	228,154	38,203	263,781
Total Expenditures	\$ 7,755,381	\$ 5,121,952	\$ 2,633,429	\$ 5,138,917
Excess (Deficiency) Revenues over Expenditures	\$(2,017,481)	\$ 742,152	\$ 2,759,633	\$ 492,513
 Other Financing Sources (Uses)				
Transfers In	\$ 41,073	\$ 30,800	\$ (10,273)	\$ 15,000
Transfers Out	(830,000)	(441,807)	388,193	(433,246)
Remitted to State General Revenue Unallocated	(1,200,000)	(154,953)	1,045,047	(250,000)
Total Other Financing Sources (Uses)	\$(1,988,927)	\$ (565,960)	\$ 1,422,967	\$ (668,246)
Excess (Deficiency) of Revenue & Other Sources over Expend- itures & Other Uses	\$(4,006,408)	\$ 176,192	\$ 4,182,599	\$ (175,733)
Fund Balance Beginning	4,006,408	824,267	(3,182,140)	1,000,000
Adjustment to Fund Balance		(459)	(459)	
Adjusted Beginning Fund Balance	4,006,408	823,808	(3,182,599)	1,000,000
Fund Balance Ending	\$ _____	\$ 1,000,000	\$ 1,000,000	\$ 824,267

DEPARTMENT OF BUSINESS REGULATION
 DIVISION OF PARI-MUTUEL WAGERING
 RACING RESEARCH TRUST FUND
 STATEMENT OF REVENUE, EXPENDITURES AND CHANGES IN FUND BALANCE
 FOR THE FISCAL YEAR ENDED JUNE 30, 1987 AND 1986

	Budget	Actual	Variance Favorable (Unfavorable)	1986 Actual
<u>Revenues</u>				
Fines (Note B)	\$ 40,000	\$ 16,150	\$ (23,850)	\$ 27,925
Interest	1,000	2,285	1,285	944
Total Revenues	\$ 41,000	\$ 18,435	\$ (22,565)	\$ 28,869
<u>Expenditures</u>				
Service Charge to General Revenue	\$ 2,500	\$ 1,118	\$ 1,382	\$ 1,720
Refunds	2,000		2,000	
Purchase of Investments	65,000		65,000	
Total Expenditures	\$ 69,500	\$ 1,118	\$ 68,382	\$ 1,720
Excess (Deficiency) of Revenue over Expenditures	(28,500)	17,317	45,817	27,149
Beginning Fund Balance		48,872	48,872	21,723
Ending Fund Balance	\$ (28,500)	\$ 66,188	\$ 94,688	\$ 48,872

SCHEDULE OF GENERAL FIXED ASSETS
JUNE 30, 1986

Automobiles	\$ 104,791
Office Furniture	32,545
Office Equipment	195,125
Laboratory Equipment	651,209
Leasehold Improvements	272,562
Books	8,091
Other Equipment	47,069
TOTAL GENERAL FIXED ASSETS	<u>\$ 1,311,391</u>

SCHEDULE OF GENERAL LONG TERM DEBT
JUNE 30, 1986

Amount to be Provided	\$ 175,172
TOTAL	<u>\$ 175,172</u>
Accrued Leave Payable	\$ 175,172
TOTAL	<u>\$ 175,172</u>

DEPARTMENT OF BUSINESS REGULATION
DIVISION OF PARI-MUTUEL WAGERING
TAX COLLECTION TRUST FUND
SUPPLEMENTAL SCHEDULE OF RECEIPTS & DISBURSEMENTS ESTIMATED & ACTUAL
FOR THE FISCAL YEAR ENDED JUNE 30, 1987 AND 1986

	Estimated	Actual	Variance Favorable (Unfavorable)	1986 Actual
Receipts				
Taxes	\$ 56,500,000	\$ 57,208,714	\$ 708,714	\$ 54,254,967
Licenses	705,300	669,623	(35,677)	696,271
Fees	55,700	61,825	6,125	55,210
Miscellaneous	39,200	1,038	(38,162)	4,127
Total Receipts	\$ 57,300,200	\$ 57,941,200	\$ 641,000	\$ 55,010,575
Disbursements				
Refunds	10,000	7,888	2,112	3,446
Transfers to Gen. Rev.	29,000,000	24,582,533	4,417,467	21,776,679
Aid to counties	29,915,500	29,915,500		29,915,500
Service Charge to General Revenue	3,800,000	3,464,714	335,286	3,314,949
Total Disbursements	\$ 62,725,500	\$ 57,970,635	\$ 4,754,865	\$ 55,010,575
Excess (Deficiency) of Receipts over Disbursements	\$ (5,425,300)	\$ (29,435)	\$ 5,395,865	\$
Fund Balance Beginning	5,425,300		(5,425,300)	
Adjustment to Fund Balance		(565)	(565)	
Adjusted Beg Fund Balance	5,425,300	(565)	(5,425,865)	
Fund Balance Ending	<u>\$</u>	<u>\$ (30,000)</u>	<u>\$ (30,000)</u>	<u>\$</u>

DEPARTMENT OF BUSINESS REGULATION
 DIVISION OF PARI-MUTUEL WAGERING
 GENERAL REVENUE AGENCY FUND
 SUPPLEMENTAL SCHEDULE OF RECEIPTS & DISBURSEMENTS ESTIMATED & ACTUAL
 FOR THE FISCAL YEAR ENDED JUNE 30, 1987 AND 1986

	<u>Estimated</u>	<u>Actual</u>	Variance Favorable (Unfavorable)	<u>1986 Actual</u>
<u>Receipts</u>				
Taxes (Note A)	\$ 64,850,000	\$ 62,092,129	\$ (2,757,871)	\$ 59,265,307
Fines (Note A)	50,000	45,950	(4,050)	25,850
Miscellaneous (Note A)		1,660	1,660	13,075
Total Receipts	\$ 64,900,000	\$ 62,139,739	\$ (2,760,261)	\$ 59,304,232
<u>Disbursements</u>				
Transfers to General Rev.	\$ 64,900,000	\$ 62,139,739	\$ 2,760,261	\$ 59,304,232
Total Disbursements	\$ 64,900,000	\$ 62,139,739	\$ 2,760,261	\$ 59,304,232
Excess (Deficiency) of Receipts over Disbursements	\$	\$	\$	\$

DEPARTMENT OF BUSINESS REGULATION
 DIVISION OF PARI-MUTUEL WAGERING
 COLLECTION FOR OTHER AGENCIES
 SUPPLEMENTAL SCHEDULE OF RECEIPTS & DISBURSEMENTS ESTIMATED & ACTUAL
 FOR THE FISCAL YEAR ENDED JUNE 30, 1987 AND 1986

	<u>Estimated</u>	<u>Actual</u>	<u>Variance Favorable (Unfavorable)</u>	<u>1986 Actual</u>
<u>Receipts</u>				
Taxes (Note C)	\$ 3,423,800	\$ 3,529,557	\$ 105,757	\$ 3,194,808
Total Receipts	\$ 3,423,800	\$ 3,529,557	\$ 105,757	\$ 3,194,808
<u>Disbursements</u>				
Deposits to Other State Agencies	\$ 3,423,800	\$ 3,529,557	\$ (105,757)	\$ 3,194,808
Total Disbursements	\$ 3,423,800	\$ 3,529,557	\$ (105,757)	\$ 3,194,808
Excess (Deficiency) of Receipts over Disbursements	\$ _____	\$ _____	\$ _____	\$ _____

SUMMARY OF ACCOUNTING POLICIES

Responsibility of both the accuracy of the presented data and the completeness and fairness of the presentation including all disclosures, rests with the Division, except for the combined balance sheet and combining statement of revenue, expenditures and changes in fund balance and supplemental schedules, which were prepared by the Finance and Accounting Section of the Department of Business Regulation. We believe the data, as presented, is accurate in all material aspects; that it is presented in a manner designed to fairly set forth the financial position and results of operations of the Division as measured by the financial activity of its various funds; and that all disclosures necessary to enable the reader to gain the maximum understanding of the Division's financial affairs have been included.

The Department of Business Regulation's accounting records for general governmental operations are maintained on a modified accrual basis, with the revenue being recorded when available and measurable, and expenditures being recorded when the services or goods are received and the liabilities are incurred. Accounting records for the Pari-Mutuel Division are maintained on an accrual basis.

Note A

Revenues generated by the Division are recorded using fund accounting. Activity occurring within the General Revenue Agency Fund and Tax Collection Trust Fund during the current fiscal year is as follows:

	<u>General Revenue Agency Fund</u>	<u>Tax Collection Trust Fund</u>	<u>Total</u>
Taxes			
Tax on Handle	\$ 54,470,813	\$ 54,470,812	\$ 108,941,625
Breaks	1,483,944	1,483,944	2,967,888
Attendance	1,253,861	1,253,857	2,507,718
Surtax	<u>4,883,511</u>		<u>4,883,511</u>
	\$ 62,092,129	\$ 57,208,613	\$ 119,300,742
Registration Fees (Net of write-offs \$1,260)\$		\$ 60,565	\$ 60,565
Licenses (Net of write-offs \$489)		699,134	699,134
Fines	45,950		45,950
Miscellaneous	<u>1,660</u>		<u>1,660</u>
	<u>\$ 62,139,739</u>	<u>\$ 57,968,312</u>	<u>\$ 120,108,051</u>

Note B

In accordance with Florida Statute 550.241, it is a violation for a person to administer or cause to be administered any drug, medication, stimulant, depressant or other type of drug-masking agent to an animal which will result in a positive test for such substance taken immediately prior to or subsequent to the racing of that animal. Rules have been promulgated which identify specific instances where the statute should be implemented. They have been adopted by the Division and enforced by the Bureau of Investigations. The schedule below is representative of total drug fines collected and deposited into the Racing Research Fund for the fiscal year ended June 30, 1987.

Broward County	\$ 2,825
Dade County	12,225
Escambia County	600
Hillsborough County	50
Pinellas County	250
Seminole County	<u>200</u>
	<u>\$ 16,150</u>

Note C

Total pari-mutuel revenues generated is comprised of revenue recognized by the Division and revenue generated on behalf of state agencies. Total dollars collected and remitted to these other agencies during the current fiscal year is noted below.

From Escheated Pari-Mutuel Tickets for Principal State School Fund (DEPARTMENT OF EDUCATION)

Associated Outdoor Clubs, Inc.	\$ 223,714	
Bayard Raceways, Inc.	61,655	
Berenson's Key West Greyhound Track	24,732	
Biscayne Kennel Club, Inc.	173,771	
Bonita Ft. Myers Corporation	148,922	
Investment Corporation of Palm Beach	153,301	
Investment Corporation of South Florida	180,414	
Jacksonville Kennel Club, Inc.	97,278	
Jefferson County Kennel Club, Inc.	55,819	
Orange Park Kennel Club, Inc.	84,763	
Pensacola Greyhound Track, Inc.	58,145	
St. Petersburg Kennel Club, Inc.	274,852	
Sanford Orlando Kennel Club, Inc.	129,464	
Sarasota Kennel Club, Inc.	113,256	
Seminole Racing, Inc.	97,122	
Seminole Racing, Inc. d/b/a Daytona Beach Kennel Club, Inc.	91,290	
Washington County Kennel Club, Inc.	82,843	
West Flagler Associates, Ltd.	127,685	
Dania Jai-Alai Division	151,585	
Florida Jai-Alai, Inc.	70,821	
Fort Pierce Jai-Alai	33,169	
Golden Crown Corporation	29,279	
Miami Jai-Alai	196,544	
Ocala Jai-Alai	41,644	
Sports Palace, Inc.	45,612	
Summer Jai-Alai	143,165	
Summersport Enterprises, Ltd.	90,989	
Tampa Jai-Alai	153,692	
The Fronton, Inc.	106,341	
Volusia Jai-Alai, Inc.	<u>80,256</u>	
		\$ 3,322,123

From Extra Days of Racing For Board of Regents - Scholarship Fund (STATE BOARD OF REGENTS)

Berenson's Key West Greyhound Track	\$ 912	
Investment Corporation of Palm Beach	19,241	
Pensacola Greyhound Track, Inc.	8,934	
Sanford Orlando Kennel Club, Inc.	38,364	
Sarasota Kennel Club, Inc.	29,406	
Washington County Kennel Club, Inc.	2,386	
Fort Pierce Jai-Alai	6,993	
Ocala Jai-Alai	4,822	
Pompano Park Associates, Ltd.-Harness	<u>7,636</u>	
		\$ 118,694

Collections For Quarterhorse Promotion Trust Fund (DEPARTMENT OF AGRICULTURE)

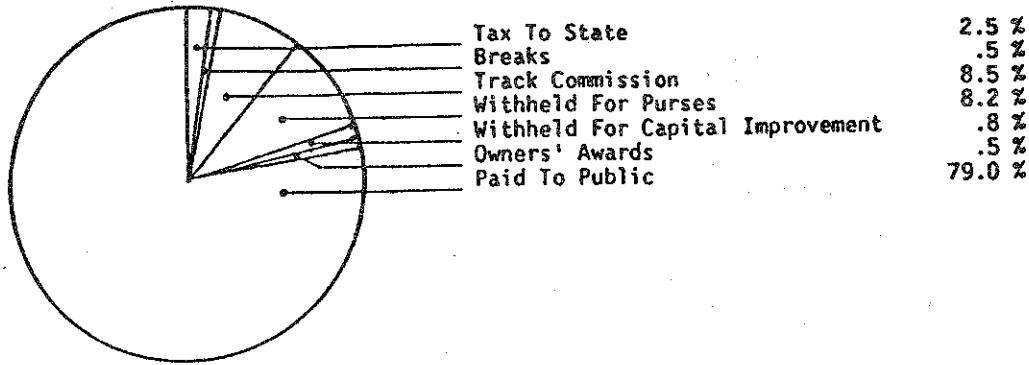
Appaloosa Racing Promotion fund	\$ 7,144	
Arabian Racing Promotion Fund	16,882	
Quarterhorse Racing Promotion Fund	<u>64,714</u>	
		\$ 88,740
		<u>\$ 3,529,557</u>

TAX STRUCTURE

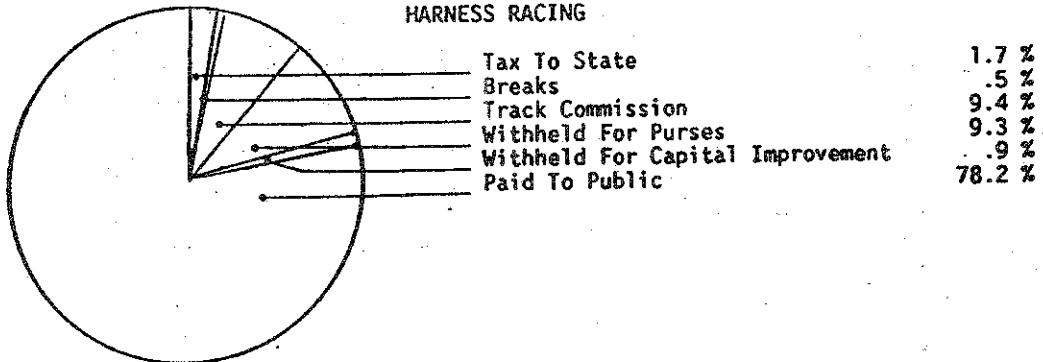
TAX STRUCTURE

Florida's Tax Structure is based upon total dollars wagered (handle), and is different for each industry based upon the needs which are particular to that sport. The amount withheld, or takeout, is divided into two basic groups: state tax, and track/fronton share, which includes restricted revenues such as capital improvement, purses and owners' awards. The remainder of the pools are returned to the public as winnings. Different tax rates apply to regular wagers, doubles and triples, and exotic wagers. Optional take-outs are marked accordingly. Breaks are paid to the promotional trust fund in quarter horse racing, the breeders' associations in standardbred and thoroughbred racing, and to the state in greyhound racing and jai-alai. Abandoned winning tickets are also paid to the breeders' associations in horseracing. In greyhound and jai-alai they escheat to the state for the State School Fund. An admission tax of the greater of 15% or 10 cents per person is paid to the state. A new tax structure has been organized to include the increased authorized racing days for various racing and jai-alai permitholders. Finally, a daily license fee of \$50, \$80, or \$100 per race is paid by all permitholders.

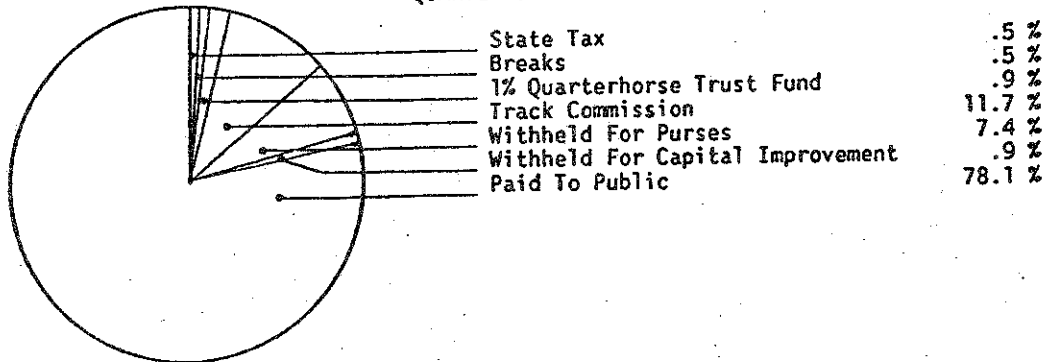
**BREAKDOWN OF BETTING DOLLAR
THOROUGHBRED RACING**



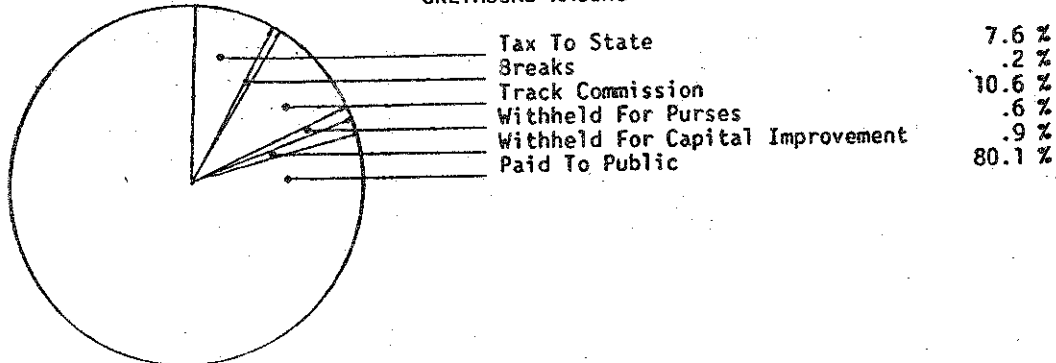
HARNESS RACING



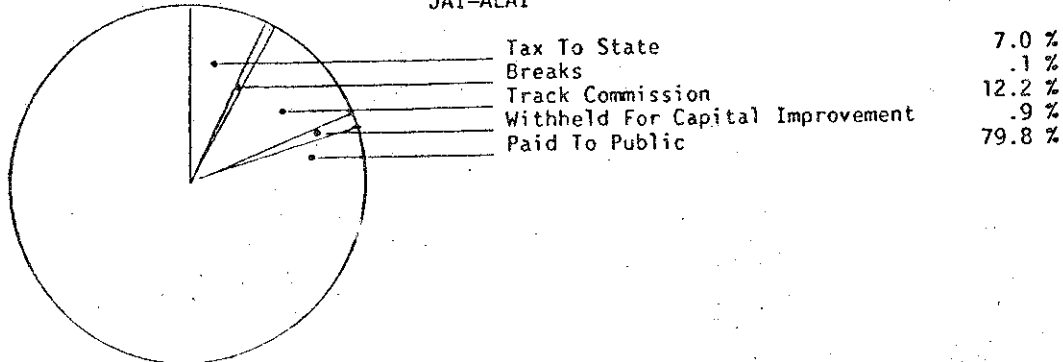
QUARTERHORSE RACING



GREYHOUND RACING



JAI-ALAI



Greyhound Racing - Regular Season

Type of Pari-Mutuel Wagering Pool	Greyhound Racing Basic Tax Structure			Optional for Capital Improv.		Optional for Add'l Capital Improv.		Maximum Authorized Takeout			
	Takeout	Add'l Purse	State Tax	Profit & Expense	Takeout	Capital Improv.	State Surtax	Takeout Purse	Add'l Capital Improv.	State Tax	Profit & Exp.
Regular: Win, Place, Show	17.6	-	-	-	-	-	-	17.6	-	7.6% of handle over \$25,000 plus surtax of 0.5% of exotics for Add'l cap. imprv.	Balance of takeout after taxes and purses and capital improv.
Doubles: Daily Double	18.0	-	-	-	1.0	0.5	0.5	19.0	-	0.5	
Quinella Perfecta Big Q	19.0	1.0	-	-	1.0	1.0	0.5	21.0	1.0	1.5	
Triples: Trifecta	18.0	-	-	-	1.0	1.0	0.5	20.0	-	1.5	

In addition to the above each permit holder is required to pay a daily license fee of \$80 per race unless the average handle per performance for the preceding racing season was under \$100,000 in which case the daily license fee would be \$50 per race.

Each permit holder is also required to pay a tax equal to the breaks.

An admission tax of 15% of the entrance gate admission charge or 10 cents whichever is greater is imposed on each person attending a dog race. The permit holder is responsible for the collection of the admission tax.

The uncashed tickets escheat to the state after one year.

PURSUANT TO CHAPTER 87-38 LAWS OF FLORIDA

State Tax on Handle: For dog tracks that equaled or exceeded \$30 million in handle for the preceding racing season, will be 7.6% of the handle in excess of \$25,000 for each performance tax on handle for tracks that equaled or exceeded \$15 million but fell below \$30 million in handle for the preceding racing season, will be 7.6% of the handle in excess of \$40,000 for each performance. Tax on handle for tracks that fell below 15 million dollars in handle for the preceding racing season, will be 7.6% of the handle in excess of \$50,000 for each performance.

Greyhound Racing (Additional Days)

Type of Pari-Mutuel Wagering Pool	Greyhound Racing Basic Tax Structure		Optional for Capital Improv.		Optional for Add'l Capital Improv.		Maximum Authorized Takeout				
	Takeout	Add'l State Tax	Profit & Expense	Takeout	Capital Improv.	State Surtax	Takeout	Add'l Purse	Capital Improv.	State Tax	Profit & Exp.
Regular: Win, Place, Show	17.6	-	-	-	-	-	17.6	-	-	8.6% of handle over \$25,000 plus surtax if capital improv. is withheld	Balance of takeout after taxes, purses and capital improv.
Doubles: Daily Double Quinella Perfecta Big Q	18.0	-	-	-	1.0	0.5	19.0	-	0.5	-	-
Triples: Trifecta Superfecta	19.0	1.0	1.0	0.5	1.0	0.5	21.0	1.0	1.5	-	-
Other Exotics Pick (N)	18.0	-	1.0	0.5	1.0	0.5	20.0	-	1.5	-	-

In addition to the above each permittholder is required to pay a daily license fee of \$80 per race unless the average handle per performance for the preceding racing season was under \$100,000 in which case the daily license fee would be \$50 per race.

Each permittholder is also required to pay a tax equal to the breaks.

An admission tax of 15% of the entrance gate admission charge or 10 cents whichever is greater is imposed on each person attending a dograce. The permittholder is responsible for the collection of the admission tax.

The uncashed tickets escheat to the state after one year.

PURSUANT TO CHAPTER 87-38 LAWS OF FLORIDA

State Tax on Handle: Tax on handle for dog tracks that exceeds an average daily handle of \$300,000 per performance, during the preceding racing season, will be 8.6% of the handle of \$25,000 for each performance. Tax on handle for tracks that equated or exceeded \$150,000 but did not exceed \$300,000 in average daily handle per performance, during the preceding racing season, will be 8.6% of the handle in excess of \$40,000 per performance. Tax on handle for that fell below an average daily handle of \$150,000 per performance during the preceding racing season, will be 8.6% of the handle in excess of \$50,000 per performance.

Jai-Alai - Regular Season

Type of Wagering Pool	Jai-Alai Basic Tax Structure		Optional for Capital Improv.		Optional for Add'l Capital Improv.		Maximum Authorized Takeout		Profit & Exp.	
	Takeout	State Tax	Profit & Expense	Takeout	Capital Improv.	Takeout	Capital Improv.	State Tax		Capital Improv.
Regular: Win, Place, Show	17.6			-	-	-	-	-	-	Balance of takeout after taxes and capital improv.
Doubles: Daily Double		7.1% of handle in excess of \$25,000 each						7.1% of handle over \$25,000 plus surtax of 0.5% of exotics for capital improv.		
Quinella Perfecta Big Q	19.0			-	1.0	0.5	0.5	20.0	0.5	
Trifecta and Other Exotics	19.0			1.0	1.0	0.5	0.5	21.0	1.5	cap. improv. if withheld

In addition to the above each permittholder is required to pay a daily license fee of \$80 per game unless the average handle per performance for the preceding season was under \$100,000 in which case the daily license fee would be \$50 per game.

Each permittholder is also required to pay a tax equal to the breaks.

An admission tax of 15% of the entrance gate admission charge or 10 cents whichever is greater is imposed on each person attending a jai-alai fronton. The permittholder is responsible for the collection of the admission tax.

The uncashed tickets escheat to the state after one year.

PURSUANT TO CHAPTER 87-38 LAWS OF FLORIDA

State Tax on Handle: Tax on handle for jai-alai frontons that equaled or exceeded \$30 million in handle for the preceding season, will be 7.1% of the handle in excess of \$25,000 for each performance. Tax on handle for frontons that equaled or exceeded \$15 million but fell below \$30 million in handle for the preceding season, will be 7.1% of the handle in excess of \$40,000 for each performance. Tax on handle for frontons that fell below \$15 million in handle for the preceding season, will be 7.1% of the handle in excess of \$50,000 for each performance.

Jai-Alai (Additional Days)

Type of Wagering Pool	Jai-Alai Basic Tax Structure			Optional for Capital Improv.			Optional for Add'l Capital Improv.			Maximum Authorized Takeout	
	Takeout	State Tax	Profit & Expense	Takeout	Capital Improv.	State Surtax	Takeout	State Surtax	Capital Improv.	State Tax	Profit & Exp.
Regular: Win, Place, Show	17.6		Balance of	-	-	-	17.6	-	-	8.1% of handle over \$25,000 plus surtax if capital improvement is withheld	Balance of takeout after taxes and capital improv.
Doubles: Daily Double	19.0		8.1% of handle in excess of \$25,000 each	-	-	-	1.0	0.5	0.5	0.5	
Quinella Perfecta											
Big Q											
Other Exotics and Trifecta	19.0		performance except as shown below	1.0	0.5	0.5	1.0	0.5	0.5	0.5	1.5

In addition to the above each permit holder is required to pay a daily license fee of \$80 per game unless the average handle per performance for the preceding season was under \$100,000 in which case the daily license fee would be \$50 per game.

Each permit holder is also required to pay a tax equal to the breaks.

An admission of 15% of the entrance gate admission charge or 10 cents whichever is greater is imposed on each person attending a jai-alai fronton. The permit holder is responsible for the collection of the admission tax.

The uncashed tickets escheat to the state after one year.

PURSUANT TO CHAPTER 87-38 LAWS OF FLORIDA

State tax on Handle: Tax on handle for jai-alai frontons that exceeded an average daily handle of \$300,000 per performance, during the preceding season, will be 8.1% of the handle in excess of \$25,000 for each performance. Tax on handle for frontons that equalled or exceeded \$150,000 but did not exceed \$300,000 in average daily handle per performance during the preceding season, will be 8.1% of the handle in excess of \$40,000 for each performance. Tax on handle for frontons that fell below an average daily handle of \$150,000 per performance during the preceding season, will be 8.1% of the handle in excess of \$50,000 per performance.

South Florida Winter Thoroughbred Tracks - Regular Season
Includes Tropical Park at Calder, Hialeah, Gulfstream

Type of Wagering Pool	South Florida Winter Thoroughbred Basic Tax Structure			Optional For Capital Improv.			Optional for Add'l Purses & Owners' Awards			Maximum Authorized Takeout				
	Takeout	Min. Purse	State Tax	Profit & Expense	Takeout	Capital Improv.	Takeout	Add'l Purses	Owners' Awards	Takeout	Purse	Owners' Awards	Capital Improv.	State Tax
Regular: Win, Place, Show	17.6	7.5	3.3% of handle in excess of \$300,000 each performance as shown below	Balance of takeout after taxes and purses	0.5	0.5	-	-	18.1	7.5	-	0.5	3.3% of handle over \$300,000 each performance except 2nd period	Balance of takeout after taxes purses and capital improv.
Trifecta and Other Exotics	19.0	7.5			1.0	1.0	2.0	1.0	22.0	8.5	1.0	1.0		

The tax on handle for the permitholder who runs the 2nd period of the South Florida Winter Thoroughbred season is 3.3% of handle in excess of \$175,000 each performance.

In addition to the above each permitholder is required to pay a daily license fee of \$100 per race unless the average handle per performance for the preceding racing season was under \$100,000 in which case the daily license fee would be \$50 per race.

Each permitholder is also required to pay a sum equal to the breaks to the Florida Thoroughbred Breeders' Association to be used to pay Breeders' and Stallion Awards.

An admission tax of 15% of the entrance gate admission charge or 10 cents whichever is greater is imposed on each person attending a horserace. The permitholder is responsible for the collection of the admission tax.

The uncashed tickets escheat after one year and are paid to the Florida Thoroughbred Breeders' Association to be used for the payment of Breeders' and Stallion awards.

The withholding of the additional 2% of exotic wagers for additional purses and for owners' awards can be taken on any or all exotic wagers and for any amount up to the additional 2%, however, if the permitholder elects to withhold the additional authorized sums, no more than 1% of the additional exotics withheld may be used for additional purses, the balance must be used for owners' awards.

Thoroughbred Racing at Calder (Summer) - Regular Season

Type of Pari-Mutuel Wagering Pool	Summer Thoroughbred Racing at Calder				Optional For Add'l Purses & Owners' Awards			Maximum Authorized Takeout					
	Takeout	Basic Min. Purse	State Tax	Profit & Expense	Capital Takeout	Capital Improv.	Takeout	Owners' Awards	Capital Improv.	State Tax			
Regular: Win, Place, Show	17.6	7.5	3.3% of handle in excess of \$300,000 each performance	Balance of takeout after taxes and purses	0.5	0.5	-	18.1	7.5	-	0.5	3.3% of handle over \$300,000 each performance	Balance of takeout after taxes and purses and capital improv.
Trifecta and Other Exotics	19.0	7.5			1.0	1.0	3.0	23.0	9.5	1.0	1.0		

In addition to the above each permit holder is required to pay a daily license fee of \$100 per race unless the average handle per performance for the preceding racing season was under \$100,000 in which case the daily license fee would be \$50 per race.

Each permit holder is also required to pay a sum equal to the breaks to the Florida Thoroughbred Breeders' Association to be used to pay Breeders' and Stallion Awards.

An admission tax of 15% of the entrance gate admission charge or 10 cents whichever is greater is imposed on each person attending a horserace. The permit holder is responsible for the collection of the admission tax.

The uncashed tickets escheat after one year and are paid to the Florida Thoroughbred Breeders' Association to be used for the payment of Breeders' and Stallion awards.

The withholding of the additional 3% of exotic wagers for additional purses and for owners' awards can be taken on any or all exotic wagers and for any amount up to the additional 3%, however, if the permit holder elects to withhold the additional authorized sums, the 1st 1% must be for owners' awards, the balance must be used for additional purses.

Thoroughbred Racing at Tampa Bay Downs - Regular Season

Type of Wagering Pool	Summer Thoroughbred Racing at Tampa Bay Downs Basic Tax Structure		Optional For Capital Improv.		Optional for Add'l Purses & Owners' Awards		Maximum Authorized Takeout		Profit & Expense	Balance of takeout after taxes and purses	3.3% of handle in excess of \$500,000 each performance	3.3% of handle over \$500,000 each performance	3.3% of State Tax	State Tax	Owners' Awards	Capital Improv.	Purse	Takeout	Owners' Awards	Capital Improv.	State Tax	Profit & Exp.
	Takeout	Min. Purse	Takeout	Capital Improv.	Takeout	Add'l Purses Awards	Takeout	Owners' Awards														
Regular: Win, Place, Show	17.6	7.5	0.5	0.5	-	-	18.1	7.5	-	0.5	0.5	3.3%	3.3%	3.3%	-	0.5	7.5	18.1	-	0.5	3.3%	Balance of takeout after taxes and purses
Triecta and Other Exotics	19.0	7.5	1.0	1.0	3.0	2.0	23.0	9.5	1.0	1.0	1.0	\$500,000 each performance	\$500,000 each performance	1.0	1.0	9.5	23.0	1.0	1.0	1.0	Balance of takeout after taxes and purses and capital improv.	

In addition to the above each permit holder is required to pay a daily license fee of \$100 per race unless the average handle per performance for the preceding racing season was under \$100,000 in which case the daily license fee would be \$50 per race.

Each permit holder is also required to pay a sum equal to the breaks to the Florida Standardbred Breeders' and Owners' Association to be used to pay Breeders' and Stallion Awards.

An admission tax of 15% of the entrance gate admission charge or 10 cents whichever is greater is imposed on each person attending a horserace. The permit holder is responsible for the collection of the admission tax.

The uncashed tickets escheat after one year and are paid to the Florida Thoroughbred Breeders' Association to be used for the payment of Breeders' and Stallion awards.

The withholding of the additional 3% of exotic wagers for additional purses and for owners' awards can be taken on any or all exotic wagers and for any amount up to the additional 3%, however, if the permit holder elects to withhold the additional authorized sums, the 1st 1% must be for owners' awards, the balance must be used for additional purses.

Harness Horseracing - Regular Season

Type of Wagering Pool	Harness Horseracing Basic Tax Structure		Optional For Capital Improv.		Optional for Add'l Purses		Maximum Authorized Takeout					
	Takeout	State Tax	Profit & Expense	Takeout	Capital Improv.	State Surtax	Add'l Purses	Takeout	Min. Purse	Capital Improv.	State Tax	Profit & Exp.
Regular: Win, Place, Show	17.6	7.5	3.3% of handle in excess of \$300,000 each performance and purses	0.5	0.5	0.0	-	18.1	7.5	0.5	3.3% of handle over \$300,000 each perf. plus .5% of exotics if withheld	Balance of takeout after taxes purses and capital improv.
Trifecta and Other Exotics	19.0	7.5		2.0	1.5	0.5*	3.0	24.0	10.5	2.0		

* See Note Below on Capital Improvements.

The authorized takeout for capital improvements is one half percent of handle on regular wagering and two percent of handle on exotic wagering. If the track elects to withhold only one percent of exotic wagers for capital improvements, the entire sum is to be used for capital improvements, however, if the track elects to withhold an additional one percent of exotic wagering for capital improvements, then there is a surtax equal to one half of the additional one percent of the exotic wagering withheld.

In addition to the above each permittholder is required to pay a daily license fee of \$100 per race unless the average handle per performance for the preceding racing season was under \$100,000 in which case the daily license fee would be \$50 per race.

Each permittholder is also required to pay a sum equal to the breaks to the Florida Standardbred Breeders' and Owners' Association to be used to pay Breeders' and Stallion Awards.

An admission tax of 15% of the entrance gate admission charge or 10 cents whichever is greater is imposed on each person attending a horserace. The permittholder is responsible for the collection of the admission tax.

The uncashed tickets escheat after one year and are paid to the Florida Standardbred Breeders' and Owners' Association to be used for the payment of Breeders' and Stallion awards.

The withholding of the additional 3% of exotic wagers for additional purses can be taken on any or all exotic wagers and for any amount up to the additional 3%.

Harness Horseracing - Regular Season (Additional Days)

Type of Pari-Mutuel Wagering Pool	Harness Horseracing			Optional For Capital Improv.		Optional for Add'l Purses		Maximum Authorized Takeout				
	Takeout	Min. Purse	Basic Tax Structure State Tax	Profit & Expense	Takeout	State Surtax	Add'l Purses	Takeout	Min. Purse	Capital Improv.	State Tax	Profit & Exp.
Regular: Win, Place, Show	17.6	7.5	4.3% of handle in excess of \$300,000 each performance	Balance of takeout after taxes and purses	0.5	.25	-	18.1	7.5	0.5	4.3% of handle over \$300,000 each performance plus Surtax if Cap. Impv. is withheld	
Trifecta and Other Exotics	19.0	7.5			2.0	1.0	3.0	24.0	10.5	2.0		

The authorized takeout for capital improvements is one half percent of handle on regular wagering and two percent of handle on exotic wagering. If the track elects to withhold only one percent of exotic wagers and one half percent of the regular wagers for Cp. Improv. there shall be a surtax imposed equal to 1/2 of these amounts. If the track elects to withhold the additional one percent of exotic wagering for capital improvements, there shall be a surtax imposed, equal to 1/2 of this amount. Also, the 2nd one percent takeout authorized for capital improvements may instead be used for additional purses. If the association elects to take this option, it shall be surtaxed as described above.

In addition to the above each permit holder is required to pay a daily license fee of \$100 per race unless the average handle per performance for the preceding racing season was under \$100,000 in which case the daily license fee would be \$50 per race.

Each permit holder is also required to pay a sum equal to the breaks to the Florida Standardbred Breeders' and Owners Association to be used to pay Breeders' and Stallion awards.

An admission tax of 15% of the entrance gate admission charge or 10 cents whichever is greater is imposed on each person attending a horserace. The permit holder is responsible for the collection of the admission tax.

The uncashed tickets escheat after one year and are paid to the Florida Standardbred Breeders' Association to be used for the payment of Breeders' and Stallion awards.

Withholdings for additional purses:
The withholding of the additional 3% of exotic wagers for additional purses can be taken on any or all exotic wagers and for any amount up to the additional 3%. In addition the 2nd 1% withheld for capital improvement pursuant F.S.550.16(2)(a) 2 may instead be used for additional purses.

This public document was promulgated at a cost of \$3.88 per copy for preparation, printing and distribution, for the information of the members of the legislature and the public.

[Blank unnumbered pages have been removed from this scan.]