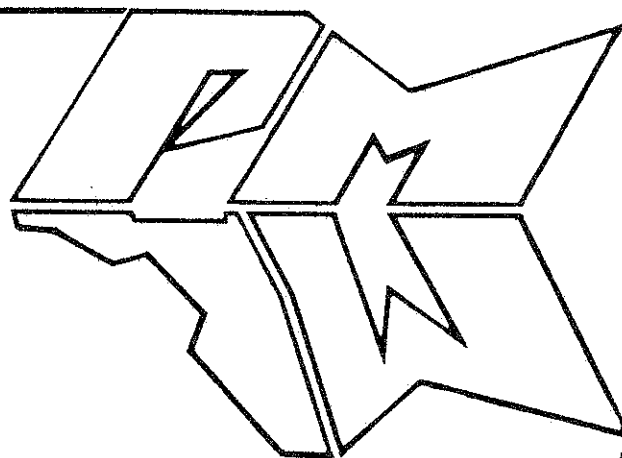


Florida Department
of
Business Regulation



Division of Pari-Mutuel Wagering

For the Fiscal Year Ending June 30, 1989



58th Annual Report

STATE OF FLORIDA

DEPARTMENT OF BUSINESS REGULATION

THE JOHNS BUILDING
725 SOUTH BRONOUGH STREET
TALLAHASSEE, FLORIDA 32399-1000



Bob Martinez, Governor
Stephen R. MacNamara, Secretary

October 31, 1989

Please reply to:

The Honorable Bob Martinez
Governor
The Capitol
Tallahassee, Florida

The Honorable Bob Crawford
President, The Florida Senate
Senate Office Building
Tallahassee, Florida

The Honorable Tom Gustafson
Speaker, House of Representatives
House Office Building
Tallahassee, Florida

Gentlemen:

We are pleased to submit this fifty-eighth Annual Report of Pari-Mutuel Wagering in the State of Florida for the fiscal year ended June 30, 1989.

Florida Pari-Mutuel Wagering had revenues to the state of \$118.5 million, which is a decrease of 9% under prior year revenues. This decrease occurred notwithstanding an increase of 5% in pari-mutuel performances. Total handle was \$1.8 billion, which reflected a decline of 8% from last year's handle of \$2.0 billion.

This report is submitted jointly by the Florida Pari-Mutuel Commission and the Department of Business Regulation, Division of Pari-Mutuel Wagering.

The Florida Pari-Mutuel Commission awards racing dates, hears appeals of Department decisions which relate to revocation or suspension of Pari-Mutuel licenses and approves all expenditures of track and fronton capital improvement funds. The commission may also recommend rule changes to the Division.

The Division monitors and regulates Florida's Pari-Mutuel industry, collects and audits pari-mutuel tax revenues, and issues licenses to all persons affiliated with Pari-Mutuel activities.

The Division and Commission are funded primarily from a daily license fee based on the number of races or games conducted at each Pari-Mutuel facility. Total revenues for operation of the Division and Commission were \$7.5 million and total expenditures were \$7.2 million.

The continued support and cooperation which has been received from you, your staffs and the pari-mutuel industry is deeply appreciated.

Respectfully submitted,

Handwritten signature of Stephen R. MacNamara in black ink.

STEPHEN R. MacNAMARA, SECRETARY
DEPARTMENT OF BUSINESS REGULATION

Handwritten signature of Joseph Priede-Rodriguez in black ink.

JOSEPH PRIEDE-RODRIGUEZ
CHAIRMAN, FLORIDA PARI-MUTUEL COMMISSION

Handwritten signature of W.V.N. Jones, Jr. in black ink.

W.V.N. JONES, JR., DIRECTOR
DIVISION OF PARI-MUTUEL WAGERING

**DEPARTMENT OF BUSINESS REGULATION
DIVISION OF PARI-MUTUEL WAGERING
COMPREHENSIVE ANNUAL FINANCIAL REPORT
FISCAL YEAR ENDED JUNE 30, 1989**

Table of Contents

INTRODUCTORY SECTION

Overview	2
Events Shaping the 1988-1989 Racing Season in Florida	3
Division Organization	4
Organization Chart	7

STATISTICAL SECTION

Revenue Collected by Geographical Location	8
Components of Pari-Mutuel Handle for Regular Performances	9
Summary of State Revenues for Regular Performances	10
Track/Fronton Revenues for Regular Performances	11
Collections For Promotional Trust Funds and Breeders' Associations	12
Components of Pari-Mutuel Handle for Charity/Scholarship Day Performances	13
Minimum Required Payment for Charity/Scholarship Day Performances	14
Track/Fronton Revenues for Charity/Scholarship Day Performances	15
Summary of State Revenues from Pari-Mutuel Activities	16
Thoroughbred Racing - Comparative Data	17
Harness Racing - Comparative Data	18
Quarter Horse Racing - Comparative Data	19
Florida-Bred Promotions	19
Jai-Alai - Comparative Data	20
Greyhound Racing - Comparative Data	21
Fiscal Year Comparative Data	24
Capital Improvements	25
Charity and Scholarship Performances	25
Summary of Additional Days of Racing Held for Charitable Purposes	26
Abandoned Winning Tickets	29
Revenues and Other Data by Association	30

FINANCIAL SECTION

Accountants' Report	67
Financial Statements:	
Combined Balance Sheet	68
Combined Statement of Revenues, Expenditures and Changes in Fund Balances - All Governmental Funds - Budget and Actual	69
Notes to Financial Statements	70
Additional Information:	
Combining Balance Sheet - Special Revenue Funds	76
Combining Statement of Revenues, Expenditures and Changes in Fund Balances - Budget and Actual - Special Revenue Funds	77
Combining Balance Sheet - Fiduciary Funds	78
Schedules of Collections and Distributions - Estimated and Actual - Fiduciary Funds:	
Collection for Other State Agencies	79
Tax Collection Trust Fund	80
General Revenue Agency Fund	81

TAX STRUCTURE

Narrative	82
Graphs - Breakdown of Betting Dollar	83
Charts - Tax Structure	85

INTRODUCTORY SECTION



OVERVIEW:

This annual report on pari-mutuel wagering in Florida covers the fiscal year which began on July 1, 1988 and ended on June 30, 1989. This is the 58th annual report in the series. The 1st annual report was issued for fiscal year 1931-1932, the first year of legalized pari-mutuel wagering in Florida.

That year there were 462 operating days. Total handle was \$17.4 million, and State revenue was \$0.7 million. This year, total handle was over \$1.8 billion, and State revenue was over \$118.5 million from 5,170 operating days.

In Florida, pari-mutuel wagering is authorized for thoroughbred horse racing, harness horse racing, quarter horse, Appaloosa and Arabian horse racing, dog racing and jai-alai. Florida is one of the primary pari-mutuel states. It is the nation's leading state in both dog racing and jai-alai as well as a major horse racing state.

This annual report which is required by Florida law is intended to inform the Governor, the Legislature, the industry and other interested parties on pari-mutuel wagering activities. The report is organized in four sections:

1. **Introductory Section** - This section provides information regarding the organization of the Division of Pari-Mutuel Wagering and the Florida Pari-Mutuel Commission.
2. **Statistical Section** - This section provides a summary of racing activities, multiple year comparative trend data, and the data concerning physical, economic, social and political characteristics of the pari-mutuel industry. The statistical section is intended to provide the reader with a broad perspective on the State's pari-mutuel activities.
3. **Financial Section** - This section provides the official financial statements of the Division of Pari-Mutuel Wagering, notes to financial statements and additional information.
4. **Tax Structure** - This section provides charts which illustrate a breakdown of the takeout.

EVENTS SHAPING THE 1988/1989 RACING SEASON IN FLORIDA

- During the 1988/1989 fiscal year, the Florida Pari-Mutuel Commission awarded thoroughbred racing dates for the first time under the new deregulation statute. South Florida thoroughbred permitholders' date requests resulted in direct competition between these tracks. Hialeah Park, Inc. will run concurrent with consecutive meets of Tropical Park, Inc., Gulfstream Park Racing Association and Calder Race Course, Inc. for the first time during the 1989-1990 Racing Season.
- W.V.N. Jones, Jr. was appointed as the Director of the Division of Pari-Mutuel Wagering in May, 1989, replacing Billy Vessels, who became Executive Assistant to the Racing Commission. Mr. Jones has extensive experience in government work and the private sector. A graduate of University of Miami, Mr. Jones' goal is to ensure the integrity of the races and games while at the same time protecting the State's interests. In doing so, Mr. Jones hopes to improve the economic atmosphere for the permitholders.
- The Pari-Mutuel Commission continued to study the effects of the greyhound purse structure in Florida. In February, 1989, a Purse Committee, established in 1988, provided recommendations to the Commission for improving the purse structure of greyhound racing in Florida. The Commission endorsed the recommendations. As a result of industry participation and the committee's activity, legislation was passed during the 1988/1989 session which provided for up to an additional 2% of exotic wagers to be withheld. The additional takeout is subject to a 17.5% surtax with half the balance to be used for additional purses.
- The Jai-Alai players strike, started in April, 1988, is unresolved as of the date of this report. It is estimated that attendance at Jai-Alai frontons declined 22% in the 1988/1989 season. This decline was partially due to the player's strike. Although some players have returned and replacement players have been hired, the strike continues to impact the Jai-Alai industry in Florida.
- A degree of economic relief was provided to the Jai-Alai industry via legislation passed during the 1988/1989 session. The legislation allowed Jai-Alai permitholders an additional 2% takeout on the exotic wager handle. The additional takeout is subject to a surtax of 17.5%.
- Gulfstream Park Racing Association, Inc. and the Division of Pari-Mutuel Wagering continued to prepare for the coveted Breeder's Cup Meet to be held on November 3, 4, and 5th, 1989. The three day meet is expected to draw over 50,000 racing fans from around the world and provide a boost of more than \$50 million to the local economy.
- For the sixth year, Pompano Park Associates Limited Partnership was awarded the Breeder's Crown Meet by the Hambletonian Society. The meet, to be held October 20, 21, and 27, 1989, is the premier event for Harness Racing. The Breeder's Crown Meet which was held in November of 1988 was televised in the United States and Canada, and drew 22,500 harness racing fans from around the world.
- Legislation was passed during the 1988/1989 session establishing a system whereby dog owners who have a financial dispute with kennels may file a complaint with the Division of Pari-Mutuel Wagering. If the complaints are justifiable, the Division may order payment of money due dog owners from the kennel operators. The system is expected to provide a method for dog owners to obtain relief from contract disputes with kennel operators.
- Legislation permitting minors to attend Pari-Mutuel events became effective on July 1, 1988. Although the effect of the legislation has been difficult to measure, many track and fronton officials believe it has resulted in an increase in attendance.
- During the fiscal year the Department contracted with Florida State University to conduct a study into selected issues affecting the Pari-Mutuel Industry. The purpose of this study is to obtain suggestions to enhance the health of the industry and to increase the Division's effectiveness in performing its regulatory function. The results of the study will be issued December, 1989.

DEPARTMENT OF BUSINESS REGULATION

SECRETARY

Stephen R. MacNamara

PARI-MUTUEL COMMISSION

J. Friede-Rodriguez, Chairman

L. Erich Braun, Member

Berton Brown, Member

James A. McGrath, Member

Armer E. White, Member

Billy Vessels, Executive Assistant

DIVISION OF PARI-MUTUEL WAGERING

W.V.N. Jones, Jr., Director

Cheryl Naylor, Assistant Director

Bill Cappleman, Chief of Operations

Kathy Donald, Chief of Revenue Services

Jane Foos, Chief of Laboratory Services

John Pozar, Chief of Investigations

THE COMMISSION

The Pari-Mutuel Commission holds the legislative authority for awarding racing dates, hearing appeals of Department decisions which relate to revocation or suspension of pari-mutuel operating and occupational licenses, and approving expenditures of the permittees' special capital improvement funds. It also may recommend rule changes to the Division. During this year, Mr. Joseph Priede-Rodriguez served as chairman of the Commission. The current members of the Commission are Mr. L. Erich Braun, Mr. Berton Brown, Mr. James A. McGrath and Mr. Armer E. White. The Commission met eight times this year in order to consider the above referenced matters.

THE DIVISION OF PARI-MUTUEL WAGERING

The Division of Pari-Mutuel Wagering is a division of the Department of Business Regulation within the Executive Branch of Florida's government. It is charged with the regulation of Florida's pari-mutuel industries under Chapters 550 and 551 of the Florida Statutes, as well as collecting and safeguarding revenues due to the state. In its 58 years of operation, the Division has grown from the old racing commission staff to a large professional organization regulating a highly complex and sophisticated industry.

The structure of the Division best demonstrates how it regulates pari-mutuel wagering. The legislature funds the Division from the Pari-Mutuel Wagering Trust Fund, which is comprised of the daily license fees (a per-race fee; see "Tax Structure") and other miscellaneous revenues.

Its operating budget is divided among four bureaus: Operations, Investigations, Laboratory Services, and Revenue Services, under the management of the Office of the Director. Each Bureau focuses upon a different aspect of the industry in our efforts to protect state revenues and maintain the public's confidence in the integrity of the sport.

BUREAU OF OPERATIONS

The Bureau of Operations is responsible for overseeing the network of state offices located in every pari-mutuel plant, as well as the issuance of more than 33,000 occupational licenses every year. The state offices are divided into three regions, each under the supervision of a regional supervisor. As many as 250 temporary and seasonal personnel may be on staff during the peak season. These employees, under the direct supervision of the Bureau of Operations, see to it that the day-to-day operation of races or games are conducted in accordance with Florida's rules. Judges or stewards monitor racing/game activities and conduct hearings under Florida's Administrative Procedures Act for violation of the rules. They rendered more than 1,483 rulings last year. More serious violations are referred to the Division Director for determination. Operations staff also collect urine and blood samples from horses and dogs for examination by the Bureau of Laboratory Services. Many of the seasonal personnel are highly skilled and have been employed by the division for more than 20 years.

The state office staff processed a majority of the 33,228 occupational license applications and fees received last year. The computerization of the occupational licensing program allows for instant retrieval of eligibility information and current license status.

BUREAU OF INVESTIGATIONS

The Bureau of Investigations examines possible rule or criminal violations which may occur in the pari-mutuel industry. The Bureau is comprised of a central office in Miami, and regional offices in Jacksonville, Tampa, and Orlando. Case investigations range in complexity from the investigation of falsified license applications to race fixing and drug violations within the industry. Among the more significant investigations conducted by the Bureau are those concerning the issuance of new and/or transfers of existing permits. These investigations require an in-depth examination of the applicant's personal and financial background in order to ensure compliance with Chapter 550.181, Florida Statutes. Ultimately, cases investigated by the Bureau may result in referrals to law enforcement agencies for criminal prosecution, other regulatory agencies, or the issuance of administrative charges and hearings before the Division Director or a designated hearing officer. Assessed penalties can range from the levying of fines and suspensions to the revocation of occupational licenses and exclusion from participation in the industry. All Division rulings are honored within the United States, Canada, Mexico and Puerto Rico, pursuant to the reciprocity agreement of the Racing Commissioners International.

BUREAU OF LABORATORY SERVICES

The primary function of the Bureau of Laboratory Services is to detect and identify any drug, medication, stimulant, depressant, hypnotic, local anesthetic or drug masking agent in the blood, urine, or other bodily fluid of racing horses and greyhounds. To ensure that testing methods remain current with increasingly sophisticated drugs being introduced, the laboratory participates in collaborative research with the University of Florida College of Veterinary Medicine. Funds for this research are generated through the Department of Business Regulation.

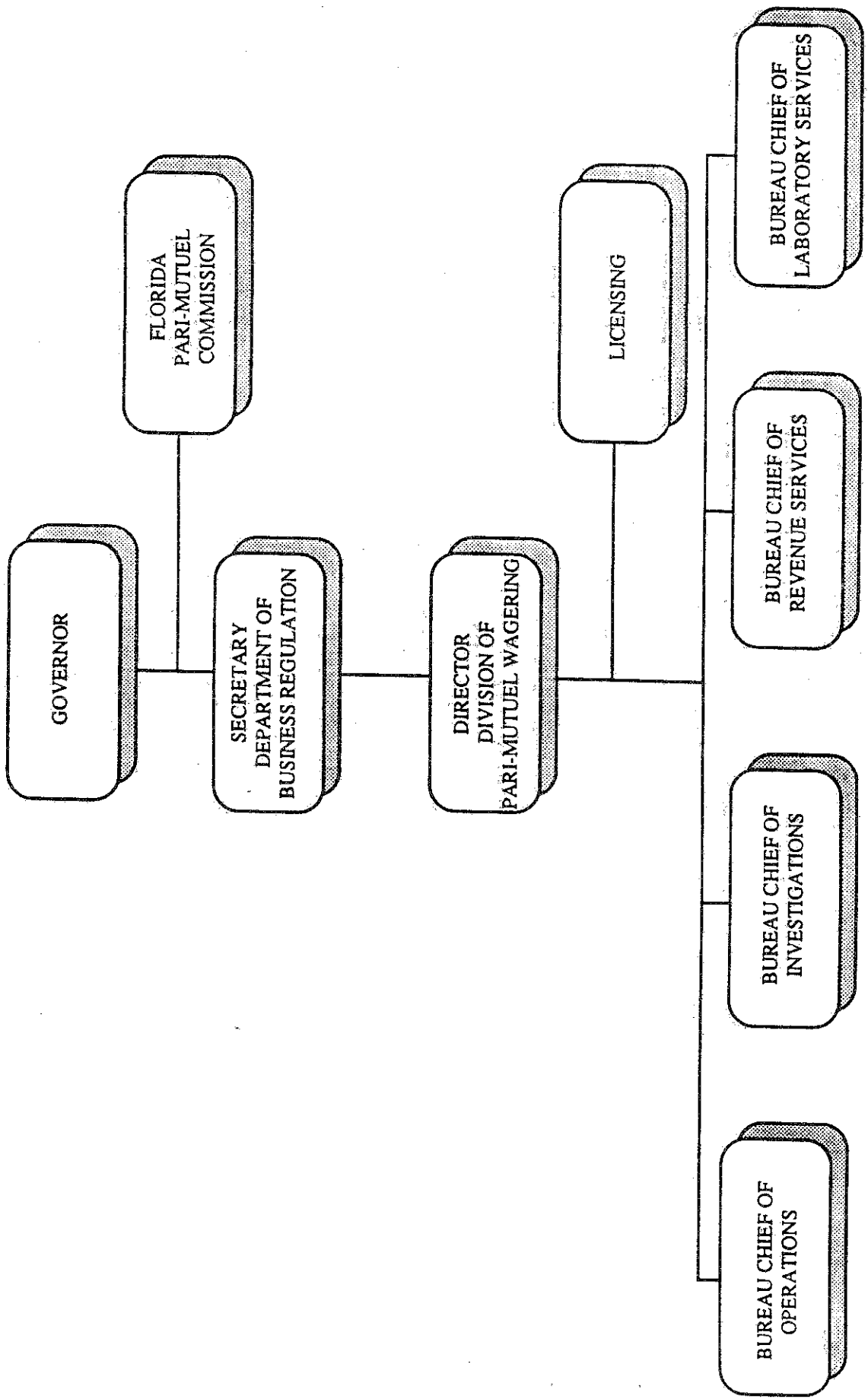
To monitor proficiency and accuracy, the laboratory participates in the Quality Assurance Program sponsored by the Racing Commissioners International through Ohio State University. During the 1988-1989 fiscal year, the Bureau of Laboratory services received 73,664 samples which resulted in 79,687 analyses. The vigilant monitoring of samples by the laboratory serves to deter the illegal drugging of racing animals in Florida.

BUREAU OF REVENUE SERVICES

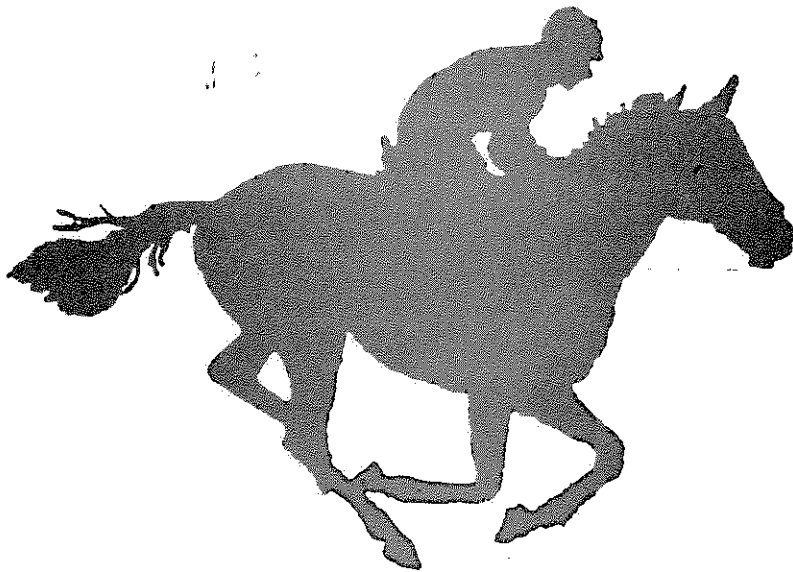
The Bureau of Revenue Services is the tax collection and financial reporting arm of the Division. As such, its functions are divided into three major activities: field operations, compliance audit, and accounting. Each activity serves to account for and safeguard state revenues.

A field auditor is assigned to each track or fronton to assure that every pari-mutuel calculation is accurate, the pool is fairly paid out to the public and that Florida statutes and rules are enforced in the calculation of admissions, track or fronton revenue, and taxes due to the state. The compliance audit staff audits various aspects of pari-mutuel activity, which may include totalisator tests, reviews of permit-holder compliance with statutes and rules, purse audits, and other pertinent financial investigations.

The accounting staff ensures that state taxes are collected on a timely and accurate basis and are responsible for reviewing permit-holder financial statements and other financial reports. The staff compiles the information for this report, and makes recommendations to the Commission on various accounting matters. Collections from all sources during the year totaled \$118,466,567 as noted on the summary of State Revenues from Pari-Mutuel Activities on page 16.



STATISTICAL SECTION



**Attendance And Revenue Collected By Geographical Location
For Fiscal Year 1988-1989**

County	Regular Performances		State Revenues	Percentage
	Handle	Attendance		
Brevard County	\$ 10,001,961	130,264	\$ 379,086	0.32%
Broward County	366,157,775	2,803,346	19,362,784	16.35
Dade County	509,301,032	3,277,749	26,569,493	22.43
Duval County	53,180,418	478,667	4,219,053	3.56
Escambia County	44,244,655	468,119	3,232,168	2.73
Gadsden County	8,783,855	99,908	331,160	0.28
Hillsborough County	171,607,532	1,636,926	11,023,201	9.30
Jackson County	34,873,175	301,802	2,807,027	2.37
Jefferson County	22,435,009	218,317	1,580,353	1.33
Lee County	72,119,560	826,140	5,988,264	5.06
Marion County	9,014,157	121,125	383,677	0.32
Monroe County	5,439,467	55,926	186,056	0.16
Palm Beach County	138,441,811	1,370,880	10,982,342	9.27
Pinellas County	99,432,991	914,862	8,174,754	6.90
St. John's County	29,622,931	231,651	2,369,062	2.00
St. Lucie County	18,139,886	232,896	807,058	0.68
Sarasota County	45,315,155	368,082	3,872,190	3.27
Seminole County	117,268,123	1,074,724	9,506,364	8.02
Volusia County	74,506,652	870,500	5,243,129	4.43
Washington County	<u>20,397,274</u>	<u>238,078</u>	<u>1,449,346</u>	<u>1.22</u>
GRAND TOTAL	<u>\$ 1,850,283,419</u>	<u>15,719,962</u>	<u>\$ 118,466,567</u>	<u>100.00%</u>

COMPONENTS OF PARI-MUTUEL HANDLE FOR REGULAR PERFORMANCES

Fiscal Year 1988-1989	Total Tax To State (1)	Total Track/Fronton Revenues From P/M Handle	Paid to Public	Collections For Awards Programs	Total Pari-Mutuel Handle
Greyhound Racing Associations	\$ 5,956,841	\$ 8,982,147	\$ 58,599,150		\$ 73,538,138
Associated Outdoor Clubs, Inc.	2,203,959	3,536,625	23,882,347		29,622,931
Bayard Raceways, Inc.	137,813	966,376	4,335,278		5,439,467
Berenson's Pari-Mutuel, Inc.	9,746,491	14,603,327	95,588,345		119,938,163
Biscayne Kennel Club, Inc.	5,678,554	8,946,715	57,494,291		72,119,560
Bonita Ft. Myers Corporation	7,494,220	11,365,680	74,783,573		93,643,473
Investment Corp. of South Florida	7,957,034	11,656,965	77,910,963		97,524,962
Investment Corp. of South Florida	4,024,064	6,338,915	42,817,439		53,180,418
Jacksonville Kennel Club, Inc.	1,483,647	3,089,190	17,862,172		22,435,009
Jefferson County Kennel Club, Inc.	2,617,812	4,115,300	28,140,062		34,873,174
Orange Park Kennel Club, Inc.	3,037,159	5,809,769	35,397,727		44,244,655
Pensacola Greyhound Track, Inc.	7,748,789	11,694,545	79,989,657		99,432,991
St. Petersburg Kennel Club, Inc.	4,558,974	7,090,368	45,723,895		57,373,237
Sanford Orlando Kennel Club, Inc.	3,631,439	5,565,916	36,117,800		45,315,155
Sarasota Kennel Club, Inc.	3,156,182	5,010,645	32,194,854		40,361,681
Seminole Greyhound Park, Inc.	4,394,776	8,194,546	49,735,118		62,324,440
Seminole Racing, Inc. d/b/a Daytona Beach Kennel Club	1,323,562	2,806,078	16,267,634		20,397,274
Washington County Kennel Club, Inc.	2,452,465	3,714,626	24,237,747		30,404,838
West Flagler Associates, Ltd.	77,603,781	123,487,733	801,078,052		1,002,169,566
Total Greyhound Tracks					
Jai-Alai Frontons	2,633,462	4,758,413	29,519,365		36,911,240
Dania Jai-Alai Division	1,316,685	2,696,653	15,519,868		19,533,206
Florida Jai-Alai, Inc.	666,600	3,067,621	14,405,621		18,139,886
Fort Pierce Jai-Alai	234,157	1,581,356	6,968,342		8,783,855
Golden Crown Corporation	3,049,151	5,551,255	34,324,240		42,924,646
Miami Jai-Alai	279,336	1,580,546	7,154,275		9,014,157
Ocala Jai-Alai	282,693	1,776,171	7,943,097		10,001,961
Sports Palace, Inc.	2,413,998	4,466,196	27,444,789		34,324,983
Summer Jai-Alai	2,470,448	4,565,497	27,842,530		34,878,475
Summersport Enterprises, Ltd.	4,043,271	7,487,284	44,611,287		56,141,842
Tampa Jai-Alai	3,227,261	5,967,811	35,603,266		44,798,338
The Fronton, Inc.	423,545	2,074,124	9,684,543		12,182,212
Volusia Jai-Alai, Inc.	21,040,607	45,572,971	261,021,223		327,634,801
Total Jai-Alai Frontons					
Thoroughbred Racing Associations	3,397,755	25,347,520	105,494,898	\$ 725,143	134,965,316
Calder Race Course, Inc.	3,811,959	20,963,362	97,357,801	567,148	122,700,270
Gulfstream Park Racing Association, Inc.	2,160,769	15,507,429	64,815,777	448,414	82,932,389
Hialeah, Inc.	175,127	8,661,370	32,815,427	275,628	41,927,552
Tampa Bay Downs, Inc.	1,661,553	11,939,439	49,843,493	366,212	63,810,697
Tropical Park, Inc.	11,207,163	82,419,120	350,327,396	2,382,545	446,336,224
Total Thoroughbred Tracks					
Harness Racing Associations	3,900	459,402	1,705,932	13,348	2,182,582
Pompano Park Associates, Ltd. - Breeder's Crown	1,137,819	14,660,566	55,749,960	411,901	71,960,246
Pompano Park Associates, Ltd. - Harness	1,141,719	15,119,968	57,455,892	429,249	74,142,828
Total Harness Racing Tracks					
TOTAL FOR ALL TRACKS AND FRONTONS	\$ 110,993,270	\$ 266,599,792	\$ 1,469,882,563	\$ 2,807,794	\$ 1,850,283,419

(1) Net of Tax on Attendance

SUMMARY OF STATE REVENUES FOR REGULAR PERFORMANCES

Fiscal Year 1988-1989	Tax on Attendance	Daily License Fee	Tax on Handle	State 50% Surtax	Breaks	Total Tax to State
Greyhound Racing Associations						
Associated Outdoor Clubs, Inc.	\$ 80,373	\$ 164,320	\$ 5,288,699	\$ 333,607	\$ 170,215	\$ 6,037,214
Bayard Raceways, Inc.	23,165	125,840	2,021,443		56,676	2,227,124
Berenson's Pari-Mutuel, Inc.	6,711	100,350	950	21,989	14,524	144,524
Biscayne Kennel Club, Inc.	110,831	250,640	8,657,400		284,634	9,857,322
Bonita Ft. Myers Corporation	121,446	430,640	4,699,750	304,690	243,474	5,800,000
Investment Corp. of Palm Beach	136,882	310,000	6,566,483	368,707	249,030	7,631,102
Investment Corp. of South Florida	94,754	162,240	7,115,497	438,729	240,568	8,051,788
Jacksonville Kennel Club, Inc.	47,867	187,600	3,699,712	40,009	96,743	4,071,931
Jefferson County Kennel Club, Inc.	26,198	191,360	1,145,701	107,407	39,179	1,509,845
Orange Park Kennel Club, Inc.	30,180	124,800	2,422,361		70,651	2,647,992
Pensacola Greyhound Track, Inc.	50,874	471,200	2,245,394	202,167	118,398	3,088,033
St. Petersburg Kennel Club, Inc.	122,524	165,360	7,254,808	66,762	261,859	7,871,313
Sanford Kennel Club, Inc.	56,931	243,120	3,927,166	261,905	126,783	4,615,905
Sarasota Kennel Club, Inc.	44,170	162,960	3,153,252	204,709	110,518	3,675,609
Seminole Greyhound Park, Inc.	58,983	242,400	2,626,688	183,403	103,691	3,215,165
Seminole Racing, Inc. d/b/a Daytona Beach Kennel Club	82,785	403,600	3,557,139	277,416	156,621	4,477,561
Washington County Kennel Club, Inc.	28,568	196,800	975,633	90,686	60,443	1,352,130
West Flagler Associates, Ltd.	31,051	75,920	2,172,068	141,011	63,466	2,483,516
Total Greyhound Tracks	<u>1,154,292</u>	<u>4,009,150</u>	<u>67,530,144</u>	<u>3,597,014</u>	<u>2,467,473</u>	<u>78,758,074</u>
Jai-Alai Frontons						
Dania Jai-Alai Division	53,276	165,360	2,338,473	75,553	54,076	2,686,738
Florida Jai-Alai, Inc.	21,539	262,080	931,313	93,822	29,470	1,338,224
Fort Pierce Jai-Alai	27,948	206,830	347,887	86,302	25,581	694,548
Golden Crown Corporation	11,989	128,050	52,457	42,669	10,981	246,146
Miami Jai-Alai	67,199	170,560	2,756,550	76,799	45,242	3,116,350
Ocala Jai-Alai	14,535	119,000	103,080	43,188	14,068	293,871
Sports Palace, Inc.	15,632	172,250	47,817	47,689	14,937	298,325
Summer Jai-Alai	45,472	165,360	2,154,849	59,470	34,319	2,459,470
Summersport Enterprises, Ltd.	43,244	175,440	2,151,902	94,386	48,720	2,513,692
Tampa Jai-Alai	79,717	417,040	3,274,296	262,663	89,272	4,122,988
The Fronton, Inc.	48,445	324,480	2,627,047	213,213	62,521	3,275,706
Volusia Jai-Alai, Inc.	21,675	119,600	226,036	56,615	21,294	445,220
Total Jai-Alai Frontons	<u>450,671</u>	<u>2,426,050</u>	<u>17,011,707</u>	<u>1,152,369</u>	<u>450,481</u>	<u>21,491,278</u>
Thoroughbred Racing Associations						
Calder Race Course Inc.	194,892	122,000	3,275,755			3,592,647
Gulfstream Park Racing Association, Inc.	159,004	51,600	3,760,359			3,970,963
Hialeah, Inc.	109,728	67,500	2,093,269			2,270,497
Tampa Bay Downs, Inc.	66,342	97,100	78,027			241,469
Tropical Park, Inc.	85,669	50,800	1,610,753			1,747,222
Total Thoroughbred Tracks	<u>615,635</u>	<u>389,000</u>	<u>10,818,163</u>			<u>11,822,798</u>
Harness Racing Associations						
Pompano Park Associates, Ltd. - Breeder's Crown	4,710	3,900	797,955	138,764		8,610
Pompano Park Associates, Ltd. - Harness	141,363	201,100	797,955	138,764		1,279,182
Total Harness Racing Tracks	<u>146,073</u>	<u>205,000</u>	<u>797,955</u>	<u>138,764</u>		<u>1,287,792</u>
TOTAL FOR TRACKS AND FRONTONS	<u>\$ 2,366,672</u>	<u>\$ 7,029,200</u>	<u>\$ 96,157,969</u>	<u>\$ 4,888,147</u>	<u>\$ 2,917,954</u>	<u>\$ 113,359,942</u>

TRACK/FRONTON REVENUES FOR REGULAR PERFORMANCES

Fiscal Year 1988-1989	Track/Fronton Commissions	Owners' Awards	Withheld For Purposes	Withheld For Capital Improvements	Total Track/ Fronton Revenues From P/M Handle
Greyhound Racing Associations					
Associated Outdoor Clubs, Inc.	\$ 7,756,169		\$ 441,622	\$ 784,356	\$ 8,982,147
Bayard Raceways, Inc.	3,178,984		178,409	179,232	3,536,625
Berenson's Pari-Mutuel, Inc.	875,227		34,580	56,569	966,376
Biscayne Kennel Club, Inc.	12,643,223		703,144	1,256,960	14,603,327
Bonita Ft. Myers Corporation	7,804,824		418,515	723,376	8,946,715
Investment Corp. of Palm Beach	9,932,056		562,289	871,335	11,365,680
Investment Corp. of South Florida	10,237,596		490,320	929,049	11,656,965
Jacksonville Kennel Club, Inc.	5,675,551		310,287	353,077	6,338,915
Jefferson County Kennel Club, Inc.	2,697,335		142,224	249,631	3,089,190
Orange Park Kennel Club, Inc.	3,722,496		196,402	196,402	4,115,300
Pensacola Greyhound Track, Inc.	5,232,092		187,534	390,143	5,809,769
St. Petersburg Kennel Club, Inc.	10,442,320		588,333	663,892	11,694,545
Sanford Orlando Kennel Club, Inc.	6,136,903		343,859	609,606	7,090,368
Sarasota Kennel Club, Inc.	4,822,962		266,755	476,199	5,565,916
Seminole Greyhound Park, Inc.	4,381,132		221,592	407,921	5,010,645
Seminole Racing, Inc. d/b/a Daytona Beach Kennel Club	7,230,204		341,120	623,222	8,194,546
Washington County Kennel Club, Inc.	2,489,727		112,523	203,828	2,806,078
West Flagler Associates, Ltd.	3,215,827		176,817	321,982	3,714,626
Total Greyhound Tracks	<u>108,474,628</u>		<u>5,716,325</u>	<u>9,296,780</u>	<u>123,487,733</u>

Jai-Alai Frontons					
Dania Jai-Alai Division	4,481,069			277,344	4,758,413
Florida Jai-Alai, Inc.	2,503,154			193,499	2,696,653
Fort Pierce Jai-Alai	2,879,469			188,196	3,067,665
Golden Crown Corporation	1,484,757			96,599	1,581,356
Miami Jai-Alai	5,211,209			340,046	5,551,255
Ocala Jai-Alai	1,485,151			95,395	1,580,546
Sports Palace, Inc.	1,671,982			104,189	1,776,171
Summer Jai-Alai	4,188,344			277,852	4,466,196
Summersport Enterprises, Ltd.	4,273,758			291,739	4,565,497
Tampa Jai-Alai	6,925,053			562,231	7,487,284
The Fronton, Inc.	5,526,689			441,122	5,967,811
Volusia Jai-Alai, Inc.	1,956,897			117,227	2,074,124
Total Jai-Alai Frontons	<u>42,587,532</u>			<u>2,985,439</u>	<u>45,572,971</u>

Thoroughbred Racing Associations					
Calder Race Course, Inc.	11,774,349	\$ 876,640	11,583,384	1,113,147	25,347,520
Gulfstream Park Racing Association, Inc.	9,693,634	350,163	9,902,846	1,016,719	20,963,562
Hialeah, Inc.	7,199,749	540,936	7,081,615	685,129	15,507,429
Tampa Bay Downs, Inc.	4,405,487	257,622	3,659,812	338,449	8,661,370
Tropical Park, Inc.	5,357,564	419,148	5,624,099	528,628	11,939,439
Total Thoroughbred Tracks	<u>38,440,783</u>	<u>2,444,509</u>	<u>37,851,756</u>	<u>3,682,072</u>	<u>82,419,120</u>

Harness Racing Associations					
Pompano Park Associates, Ltd. - Breeder's Crown	273,459		167,685	18,258	459,402
Pompano Park Associates, Ltd. - Harness	7,006,334		6,898,310	754,922	14,660,566
Total Harness Racing Tracks	<u>7,279,793</u>		<u>7,066,995</u>	<u>773,180</u>	<u>15,119,968</u>

TOTAL FOR ALL TRACKS AND FRONTONS	<u>\$ 196,782,736</u>	<u>\$ 2,444,509</u>	<u>\$ 50,635,076</u>	<u>\$ 16,737,471</u>	<u>\$ 266,599,792</u>
--	-----------------------	---------------------	----------------------	----------------------	-----------------------

**Revenues for Regular Performances
Collections-For-Promotional Trust Funds and Breeders' Associations
Fiscal Year 1988-1989**

	1% Quarter Horse P/M Handle	Breaks	Escheated P/M Tickets	Total Promotional Funds
Collections were as follows:				
Thoroughbred Racing Associations				
Calder Race Course, Inc.	\$ 728,924		\$ 220,563	\$ 949,487
Gulfstream Park Racing Association, Inc.	567,148		486,437	1,053,585
Hialeah, Inc.	469,250		139,542	608,792
Tampa Bay Downs, Inc.	271,787		114,993	386,780
Tropical Park, Inc.	<u>366,212</u>		<u>140,239</u>	<u>506,451</u>
Total Thoroughbred Associations	<u>2,403,321</u>		<u>1,101,774</u>	<u>3,505,095</u>
Harness Racing Associations				
Pompano Park Associates, Ltd. - Breeder's Crown and Harness		<u>435,791</u>	<u>195,741</u>	<u>631,532</u>
Total Harness Racing Associations		<u>435,791</u>	<u>195,741</u>	<u>631,532</u>
Quarter Horse Associations				
Pompano Park Associates, Ltd. - Quarter Horse			30,973	30,973
Tampa Bay Downs, Inc. - Arabians & Appaloosa	\$ 14,128	<u>9,845</u>	<u>1,310</u>	<u>25,283</u>
Total Quarter Horse Associations	<u>14,128</u>	<u>9,845</u>	<u>32,283</u>	<u>56,256</u>
TOTAL ALL TRACKS	<u>\$ 14,128</u>	<u>\$ 2,848,957</u>	<u>\$ 1,329,798</u>	<u>\$ 4,192,883</u>

Recipients were as follows:

Florida Thoroughbred Breeders' Association	\$ 2,403,321	\$ 1,101,774	\$ 3,505,095
Florida Standardbred Breeders' and Owners' Association	435,791	195,741	631,532
Florida Quarter Horse Breeders' and Owners' Association		30,973	30,973
Department of Agriculture:			
Appaloosa Racing Promotion Fund (Note 8)	\$ 14,128	9,845	491
Arabian Racing Promotion Fund (Note 8)	<u> </u>	<u> </u>	<u>819</u>
Total Department of Agriculture	<u>14,128</u>	<u>9,845</u>	<u>1,310</u>
TOTAL ALL RECIPIENTS	<u>\$ 14,128</u>	<u>\$ 2,848,957</u>	<u>\$ 1,329,798</u>

COMPONENTS OF PARI-MUTUEL HANDLE FOR CHARITY/SCHOLARSHIP DAY PERFORMANCES

Fiscal Year 1988-1989	Total Minimum Required Payment (1)	Total Track Revenue	Paid to Public	Daily License Fee	Collections for Awards Programs	Total Pari-Mutuel Handle
Greyhound Racing Associations						
Associated Outdoor Clubs, Inc.	\$ 62,439	\$ 104,607	\$ 672,038	\$ 4,160		\$ 843,244
Bayard Raceways, Inc.	35,457	63,870	427,274	3,120		529,721
Berenson's Pari-Mutuel, Inc.	53,155	83,234	542,954	2,080		681,423
Biscayne Kennel Club, Inc.	41,930	85,628	527,881	7,280		662,719
Bonita Ft. Myers Corporation	72,089	122,273	781,069	5,200		980,631
Investment Corp. of Palm Beach	63,745	97,896	648,809	2,080		812,530
Investment Corp. of South Florida						
Jacksonville Kennel Club, Inc.						
Jefferson County Kennel Club, Inc.	4,864	13,750	76,382	1,040		96,036
Orange Park Kennel Club, Inc.	48,131	82,407	556,972	3,120		690,630
Pensacola Greyhound Track, Inc.	27,408	64,722	393,693	6,240		492,063
St. Petersburg Kennel Club, Inc.	121,321	192,755	1,315,869	4,160		1,634,105
Sanford Orlando Kennel Club, Inc.	79,470	133,307	854,236	5,200		1,072,213
Sarasota Kennel Club, Inc.	56,283	91,321	593,354	3,120		744,078
Seminole Greyhound Park, Inc.	15,947	30,062	188,033	2,000		236,042
Seminole Racing, Inc. d/b/a Daytona Beach Kennel Club	25,684	62,533	364,678	4,160		457,055
Washington County Kennel Club, Inc.	287	6,724	31,435	1,040		39,486
West Flagler Associates, Ltd.						
Total Greyhound Tracks	<u>708,210</u>	<u>1,235,089</u>	<u>7,974,677</u>	<u>54,000</u>		<u>9,971,976</u>
Jai-Alai Frontons						
Dania Jai-Alai Division	40,263	87,043	529,307	5,200		661,813
Florida Jai-Alai, Inc.	12,331	31,549	181,550	3,120		228,550
Fort Pierce Jai-Alai	2,550	70,356	313,217	8,450		394,573
Golden Crown Corporation	425	10,336	53,675	3,250		67,686
Miami Jai-Alai	72,020	142,312	875,983	5,200		1,095,515
Ocala Jai-Alai	542	14,650	65,792	1,950		82,934
Sports Palace, Inc.	654	18,332	85,801	3,250		108,037
Summer Jai-Alai						
Summersport Enterprises, Ltd.	61,611	129,407	787,430	6,640		985,088
Tampa Jai-Alai	36,698	79,644	470,188	5,200		591,730
The Fronton, Inc.	28,638	66,205	386,743	5,200		486,786
Volusia Jai-Alai, Inc.	1,639	28,607	124,408	1,950		156,604
Total Jai-Alai Frontons	<u>257,371</u>	<u>678,441</u>	<u>3,874,094</u>	<u>49,410</u>		<u>4,859,316</u>
Thoroughbred Racing Associations						
Calder Race Course, Inc.	12,708	132,585	535,003	1,000	3,780	685,076
Gulfstream Park Racing Association, Inc.	64,483	732,065	2,929,528	6,000	20,836	3,752,912
Hialeah, Inc.		579,274	2,185,682	7,600	20,132	2,792,688
Tampa Bay Downs, Inc.						
Tropical Park, Inc.						
Total Thoroughbred Tracks	<u>77,191</u>	<u>1,443,924</u>	<u>5,650,213</u>	<u>14,600</u>	<u>44,748</u>	<u>7,230,676</u>
Harness Racing Associations						
Pompano Park Associates, Ltd. - Harness	11,066	371,682	1,401,394	6,300	10,542	1,800,984
Total Harness Racing Tracks	<u>11,066</u>	<u>371,682</u>	<u>1,401,394</u>	<u>6,300</u>	<u>10,542</u>	<u>1,800,984</u>
TOTAL FOR ALL TRACKS AND FRONTONS	<u>\$ 1,053,838</u>	<u>\$ 3,729,136</u>	<u>\$ 18,900,378</u>	<u>\$ 124,310</u>	<u>\$ 55,290</u>	<u>\$ 23,862,952</u>

(1) Net of Tax on Attendance

MINIMUM REQUIRED PAYMENT FOR CHARITY/SCHOLARSHIP DAY

	Tax on Attendance	Tax on Handle	State 50% Surtax	Breaks	Total Minimum Required Payment
Fiscal Year 1988-1989					
Greyhound Racing Associations					
Associated Outdoor Clubs, Inc.	833	\$ 56,486	\$ 3,795	2,158	\$ 63,272
Bayard Raceways, Inc.	394	34,559		898	35,851
Benson's Pari-Mutuel, Inc.	638	47,988	3,131	2,036	53,793
Biscayne Kennel Club, Inc.	867	37,067	2,857	2,006	42,797
Bonita Ft. Myers Corporation	1,207	65,028	4,357	2,704	73,296
Investment Corp. of Palm Beach	741	57,952	3,716	2,077	64,486
Investment Corp. of South Florida					
Jacksonville Kennel Club, Inc.	99	4,259	461	144	4,963
Jefferson County Kennel Club, Inc.	523	46,788		1,343	48,654
Orange Park Kennel Club, Inc.	578	23,717	2,227	1,464	27,986
Pensacola Greyhound Track, Inc.	1,739	116,592	746	3,983	123,060
St. Petersburg Kennel Club, Inc.	1,017	71,988	4,875	2,607	80,487
Sanford Orlando Kennel Club, Inc.	837	50,850	3,266	2,167	57,120
Sarasota Kennel Club, Inc.	217	14,139	1,069	739	16,164
Seminole Greyhound Park, Inc.	589	22,576	2,040	1,068	26,273
Seminole Racing, Inc. d/b/a Daytona Beach Kennel Club	35		181	106	322
Washington County Kennel Club, Inc.					
West Flagler Associates, Ltd.					
Total Greyhound Tracks	<u>10,314</u>	<u>649,989</u>	<u>32,721</u>	<u>25,500</u>	<u>718,524</u>
Jai-Alai Frontons					
Dania Jai-Alai Division	707	38,114	1,240	909	40,970
Florida Jai-Alai, Inc.	219	10,902	1,087	342	12,550
Fort Pierce Jai-Alai	529	101	1,887	562	3,079
Golden Crown Corporation	89		331	94	514
Miami Jai-Alai	1,263	68,907	1,999	1,114	73,283
Ocala Jai-Alai	152		400	142	694
Sports Palace, Inc.	162		511	143	816
Summer Jai-Alai					
Summersport Enterprises, Ltd.	1,095	58,226	2,125	1,260	62,706
Tampa Jai-Alai	792	33,138	2,781	779	37,490
The Fronton, Inc.	439	25,687	2,327	624	29,077
Volusia Jai-Alai	299	675	734	230	1,938
Total Jai-Alai Frontons	<u>5,746</u>	<u>235,750</u>	<u>15,422</u>	<u>6,199</u>	<u>263,117</u>
Thoroughbred Racing Associations					
Caider Race Course, Inc.	906	12,708			13,614
Gulfstream Park Racing Association, Inc.	4,889	64,483			69,372
Hialeah, Inc.	4,252				4,252
Tampa Bay Downs, Inc.					
Tropical Park, Inc.					
Total Thoroughbred Tracks	<u>10,047</u>	<u>77,191</u>			<u>87,238</u>
Harness Racing Associates					
Pompano Park Associates, Ltd. - Harness	3,269	11,066			14,335
Total Harness Racing Tracks	<u>3,269</u>	<u>11,066</u>			<u>14,335</u>
TOTAL FOR ALL TRACKS AND FRONTONS	<u>\$ 29,376</u>	<u>\$ 973,996</u>	<u>\$ 48,143</u>	<u>\$ 31,699</u>	<u>\$ 1,083,214</u>

TRACK/FRONTON REVENUES FOR CHARITY/SCHOLARSHIP DAY PERFORMANCES

Fiscal Year 1988-1989

	Track/Fronton Commission	Owners' Awards	Withheld For Purses	Withheld For Capital Improvements	Total Track/Fronton Revenues
Greyhound Racing Associations					
Associated Outdoor Clubs, Inc.	\$ 90,800		\$ 4,989	\$ 8,818	\$ 104,607
Bayard Raceways, Inc.	57,544		3,163	3,163	63,870
Berenson's Pari-Mutuel, Inc.			3,868	6,999	83,234
Biscayne Kennel Club, Inc.	74,576		4,082	6,970	85,628
Bonita Ft. Myers Corporation	105,849		6,033	10,391	122,273
Investment Corp. of Palm Beach	85,946		4,117	7,833	97,896
Investment Corp. of South Florida					
Jacksonville Kennel Club, Inc.			658	1,119	13,750
Jefferson County Kennel Club, Inc.	11,973		4,064	4,064	82,407
Orange Park Kennel Club, Inc.	74,279		4,064	4,265	64,722
Pensacola Greyhound Track, Inc.	58,427		2,030	10,415	192,755
St. Petersburg Kennel Club, Inc.	172,861		9,479	11,395	133,307
Sanford Orlando Kennel Club, Inc.	115,421		6,491	7,510	91,321
Sarasota Kennel Club, Inc.	79,600		4,211	7,510	30,062
Seminole Greyhound Park, Inc.	26,259		1,355	2,448	62,533
Seminole Racing, Inc. d/b/a Daytona Beach Kennel Club	55,337		2,569	4,627	6,724
Washington County Kennel Club, Inc.	6,049		247	428	
West Flagler Associates, Ltd.					
Total Greyhound Tracks	<u>1,087,288</u>		<u>57,356</u>	<u>90,445</u>	<u>1,235,089</u>
Jai-Alai Frontons					
Dania Jai-Alai Division	81,952			5,091	87,043
Florida Jai-Alai, Inc.	29,247			2,302	31,549
Fort Pierce Jai-Alai	66,166			4,190	70,356
Golden Crown Corporation	9,577			759	10,336
Miami Jai-Alai	133,642			8,670	142,312
Ocala Jai-Alai	13,759			891	14,650
Sports Palace, Inc.	17,182			1,150	18,332
Summer Jai-Alai					
Summersport Enterprises, Ltd.	121,577			7,830	129,407
Tampa Jai-Alai	73,592			6,052	79,644
The Fronton, Inc.	61,304			4,901	66,205
Volusia Jai-Alai, Inc.	26,993			1,614	28,607
Total Jai-Alai Frontons	<u>634,991</u>			<u>43,450</u>	<u>678,441</u>
Thoroughbred Racing Associations					
Calder Race Course, Inc.	61,855	4,550	60,480	5,700	132,585
Gulfstream Park Racing Association, Inc.					
Hialeah, Inc.	358,761	25,134	316,833	31,337	732,065
Tampa Bay Downs, Inc.	296,864	16,855	243,162	22,393	579,274
Tropical Park, Inc.					
Total Thoroughbred Tracks	<u>717,480</u>	<u>46,539</u>	<u>620,475</u>	<u>59,430</u>	<u>1,413,924</u>
Harness Racing Associations					
Pompano Park Associates, Ltd. - Harness	185,577		170,598	15,507	371,682
Total Harness Racing Tracks	<u>185,577</u>		<u>170,598</u>	<u>15,507</u>	<u>371,682</u>
TOTAL FOR ALL TRACKS AND FRONTONS	<u>\$ 2,625,336</u>	<u>\$ 46,539</u>	<u>\$ 848,429</u>	<u>\$ 208,832</u>	<u>\$ 3,729,136</u>

**DIVISION OF PARI-MUTUEL WAGERING
SUMMARY OF STATE REVENUES FROM PARI-MUTUEL ACTIVITIES
JULY 1, 1988 THROUGH JUNE 30, 1989**

State Revenue From Regular Performances:	
Tax on Attendance (Note 5)	\$ 2,366,672
Daily License Fee	7,029,200
Tax on Handle (Note 5)	96,157,969
Breaks on Greyhound & Jai-Alai (Note 5)	2,917,954
State 50% Surtax (Note 5)	<u>4,888,147</u>
Total State Revenue From Regular Performances	<u>113,359,942</u>
State Revenue From Charity Performances:	
Daily License Fees	<u>124,310</u>
Total State Revenue From Charity Days	<u>124,310</u>
Total State Revenue From Pari-Mutuel Performances	<u>113,484,252</u>
Other State Revenue:	
Occupational Licenses (Note 5)	821,712
Registration (Note 5)	76,277
Fingerprint Fees	238,044
Escheated Tickets From Greyhound and Jai-Alai (Note 8)	3,727,551
State Board of Regents - Racing Scholarship Funds (Note 8)	61,908
Racing Research Trust Fund - Fines (Note 6)	6,425
Miscellaneous Revenues	10,515
Miscellaneous Fines (Note 5)	<u>14,600</u>
Total Other State Revenues	<u>4,957,032</u>
Promotion Trust Fund:	
Breaks - Regular Performances	9,845
1% of Handle - Quarter Horses	14,128
Escheated Tickets	<u>1,310</u>
Total Quarter Horse Promotion Trust Fund Revenue (Note 8)	<u>25,283</u>
 Total Revenues Generated	 <u>\$ 118,466,567</u>

HORSE RACING

Thoroughbred Racing

The long tradition of quality throughout racing in Florida continued with 374 regular performances at four racetracks. Minors were permitted to attend pari-mutuel events for fiscal year 1988-1989, which enhanced the public's view of horse racing as family entertainment and strengthened attendance in tourist areas.

As usual, Florida's major stakes races drew large crowds and national attention. Among highlights of every racing year are the Tropical Park Derby, the Flamingo Stakes at Hialeah Park, Gulfstream's Florida Derby, and Tampa Bay Downs' Tampa Bay Derby, all of which are important preludes to racing's triple crown. The Florida Stallion Stakes series, run at Calder Race Course, has continued to capture national attention and serves as a showcase for two year old Florida-bred horses. There were 144 total stakes races held in Florida, which included 51 for Calder Race Course Inc., 29 for Gulfstream Park, 27 for Hialeah, Inc., 16 for Tampa Bay Downs, Inc. and 21 for Tropical Park, Inc.

Thoroughbred racing experienced a slight decrease in attendance with 2,268,652 racing fans, who wagered \$446,336,224 during fiscal year 1988-1989. No new thoroughbred applications were received by the Division during fiscal year 1988-1989. Thoroughbred racing contributed 10% of Florida's total collections from pari-mutuel wagering performances.

Under Florida law, thoroughbred permitholders are obligated to pay a minimum of 7.5% of their total handle to thoroughbred owners in the form of purses. In addition, each thoroughbred permitholder may withhold an additional 1% of the handle on exotic wagering to pay awards to owners of Florida thoroughbred horses which win races. Any permitholder who elects to withhold the additional 1% for owner awards is entitled to withhold up to an additional 2% of the handle on exotic wagering for purses. Tracks which receive broadcasts of horse races from outside Florida, or transmit broadcasts of horse races to other tracks outside Florida must also pay 50% of the net proceeds resulting from such broadcasts, less direct expenses, to horse owners in the form of purses. The thoroughbred racing permitholders reported the following payments for fiscal year 1988-1989:

	Purses	Stakes	Starting, Entry and Nomination	Sponsor Contributions	Total	Owners' Awards
Calder Race Course, Inc.	\$ 11,855,555	\$ 2,347,000	\$ 1,483,800	\$ 200,000	\$ 15,886,355	\$ 937,300
Gulfstream Park	7,406,600	2,907,325	814,265	100,000	11,228,190	225,600
Hialeah, Inc.	6,678,400	1,705,885	564,640	116,600	9,065,525	1,099,000
Tampa Bay Downs, Inc.	3,684,800	559,550	84,450	95,000	4,423,800	301,000
Tropical Park, Inc.	4,170,005	1,305,000	136,725	0	5,611,730	368,400
	<u>\$ 33,795,360</u>	<u>\$ 8,824,760</u>	<u>\$ 3,083,880</u>	<u>\$ 511,600</u>	<u>\$ 46,215,600</u>	<u>\$ 2,931,300</u>

Comparative Data for Regular Performances - Thoroughbred Racing July 1, 1988 Through June 30, 1989

Racing Association	Days	Perf.	Paid Attendance	Pari-Mutuel Handle	Tax To State
Calder Race Course, Inc.	1987 - 1988	137	833,554	\$ 164,330,857	\$ 4,403,788
	1988 - 1989	<u>119</u>	<u>698,289</u>	<u>134,965,316</u>	<u>3,592,647</u>
	Difference	-18	-16	-29,365,541	-811,141
	Pct Change	-13	-13	-135,265	-18
Gulfstream Park Racing Association, Inc.	1987 - 1988	50	497,728	118,454,866	3,827,425
	1988 - 1989	<u>50</u>	<u>522,460</u>	<u>122,700,270</u>	<u>3,970,963</u>
	Difference	0	24,732	4,245,404	143,538
	Pct Change	0	0	5	4
Hialeah, Inc.	1987 - 1988	50	283,375	67,633,192	1,872,631
	1988 - 1989	<u>65</u>	<u>373,919</u>	<u>82,932,389</u>	<u>2,270,497</u>
	Difference	15	90,544	15,299,197	397,866
	Pct Change	30	30	32	23

Comparative Data for Regular Performances - Thoroughbred Racing (Continued)
July 1, 1988 Through June 30, 1989

Racing Association		Days	Perf.	Paid Attendance	Pari-Mutuel Handle	Tax To State
Tampa Bay Downs, Inc.	1987 - 1988	90	90	330,641	38,640,453	217,471
	1988 - 1989	<u>90</u>	<u>90</u>	<u>370,791</u>	<u>41,927,552</u>	<u>241,469</u>
	Difference	0	0	40,150	3,287,099	23,998
	Pct Change	0	0	12	9	11
Tropical Park, Inc.	1987 - 1988	50	50	348,038	73,784,024	2,096,549
	1988 - 1989	<u>50</u>	<u>50</u>	<u>303,193</u>	<u>63,810,697</u>	<u>1,747,222</u>
	Difference	0	0	-44,845	-9,973,327	-349,327
	Pct Change	0	0	-13	-14	-17
TOTAL FOR THOROUGHBRED TRACKS	1987 - 1988	377	377	2,293,336	462,843,392	12,417,864
	1988 - 1989	<u>374</u>	<u>374</u>	<u>2,268,652</u>	<u>446,336,224</u>	<u>11,822,798</u>
	Difference	-3	-3	-24,684	\$ -16,507,168	\$ -595,066
	Pct Change	-1	-1	-1	-4	-5

Harness Racing

Pompano Park's winter harness racing meet in Broward County conducted 165 regular performances, and continued to attract many of the nation's better standardbreds despite increasing competition from year-round racing in the North. Major stakes races included the Breeder's Crown, which this year offered a total purse of over \$2,000,000, and the Matron's Stakes which offered a total purse of over \$1,000,000. This was the fifth year in a row that Pompano has hosted the Breeder's Crown, which is televised nationally.

Harness racing in Florida experienced a decrease in handle and attendance during the year, with \$74,142,828 wagered by 619,393 patrons. No new permit applications were received by the Division during fiscal year 1988-1989. Harness racing contributed 1% of the State's overall collections from pari-mutuel wagering performances.

Under Florida law, harness racing permitholders are obligated to pay a minimum of 7.5% of their total handle to standardbred owners in the form of purses. In addition, each harness racing permitholder may withhold up to an additional 3% of handle on exotic wagers to pay purses. Florida's sole harness racing permitholder, Pompano Park Associates, Ltd. reported purse payments of \$10,719,008 for fiscal year 1988-1989.

Comparative Data for Regular Performances - Harness Racing
July 1, 1988 Through June 30, 1989

Racing Association		Days	Perf.	Paid Attendance	Pari-Mutuel Handle	Tax To State
Pompano Park Associates, Ltd. - Harness (Includes Breeder's Crown)	1987 - 1988	170	170	638,177	85,095,287	1,656,475
	1988 - 1989	<u>165</u>	<u>168</u>	<u>619,393</u>	<u>74,142,828</u>	<u>1,287,792</u>
	Difference	-5	-2	-18,784	-10,952,459	-368,683
	Pct Change	-3	-1	-3	-13	-22
TOTAL FOR HARNESS TRACKS	1987 - 1988	170	170	638,177	85,095,287	1,656,475
	1988 - 1989	<u>165</u>	<u>168</u>	<u>619,393</u>	<u>74,142,828</u>	<u>1,287,792</u>
	Difference	-5	-2	-18,784	-10,952,459	-368,683
	Pct Change	-3	-1	-3	-13	-22

Quarter Horse Racing

No quarter horse races were held during fiscal year 1988-1989. A new quarter horse permit was issued to Classic Mile, Inc., which is scheduled to open April 1, 1990.

**Comparative Data for Regular Performances - Quarter Horse Racing
July 1, 1988 Through June 30, 1989**

Racing Association		Days	Perf.	Paid Attendance	Pari-Mutuel Handle	Tax To State
Pompano Park Associates, Ltd. - Quarter Horse	1987 - 1988	20	20	36,273	3,697,152	26,990
	1988 - 1989	<u>0</u>	<u>0</u>	<u>0</u>	<u>0</u>	<u>0</u>
	Difference	-20	-20	-36,273	-3,697,152	-26,990
	Pct Change	-100	-100	-100	-100	-100
TOTAL FOR QUARTER HORSE TRACKS	1987 - 1988	20	20	36,273	3,697,152	26,990
	1988 - 1989	<u>0</u>	<u>0</u>	<u>0</u>	<u>0</u>	<u>0</u>
	Difference	-20	-20	-36,273	\$ -3,697,152	\$ -26,990
	Pct Change	-100	-100	-100	-100	-100

Promotional Programs for Florida Bred Horses

Florida Breeder's promotions and award programs are administered by private breeders and owners' associations organized to promote ownership and breeding of race horses in the state of Florida. Each association conducts its own campaign to enhance the horse breeding industry in the state, and provides breeders and owners awards of up to 20% of announced gross purses. The thoroughbred, standardbred, and quarter horse breeders associations are funded by the breaks and the uncashed tickets for each racing season. The collections for the associations are noted on page 12 in the Schedule of Collections for Promotional Trust Funds and Breeders' Associations.

The Florida Thoroughbred Breeders' Association administers promotional activities for the state's thoroughbred breeding industry, which consists of over 600 breeding farms and over 38,000 thoroughbreds. Florida is the third leading thoroughbred state by population in the United States, behind New York and California. Last year, over \$5,000,000 was paid in breeders incentives by the association.

The Florida Standardbred Breeders' and Owners' Association promotional activities included providing \$161,656 in breeders', owners' and stallion awards for eligible horses during Pompano Park's 1988-1989 meet, and \$210,774 for the Florida Breeders' Stakes Races. An additional \$43,850 was added to purses in overnight races for Florida-breds, and purses in the amount of \$276,860 were provided for non-wagering harness races conducted at six locations throughout Florida. Those races provided an opportunity for standardbreds to prepare for the winter meet and allowed Florida citizens outside the Pompano area to experience harness racing.

The Florida Quarter Horse Breeders' and Owners' Association conducts promotional activities for the state's quarter horse industry. Although no wagering quarter horse races were held in Florida during this fiscal year, the association provided \$35,500 for two non-wagering performances in the state. Additionally, Florida-breds won seven prestigious futurity and derby races during the year which were held in other states, including the \$1,000,000 All American Futurity. The association also reports that the world champion chosen by the American Quarter Horse Association for 1988 was a Florida-bred.

JAI-ALAI

Florida was the first state in the nation to offer pari-mutuel wagering on jai-alai. Today, Florida has the largest jai-alai frontons in the world with twelve permitholders operating 2,715 regular performances in ten frontons.

Both handle and attendance showed a decrease from the prior year with \$327,634,801 wagered on regular jai-alai games by 3,739,322 patrons in fiscal year 1988-1989. A portion of the decrease can be attributed to the effects of the jai-alai players' strike which began in April, 1988 and was unresolved as of the date of this report. No new permits were issued in Florida. Jai-alai contributed 19% of the state's collections from pari-mutuel wagering performances.

**Comparative Data for Regular Performances - Jai-Alai Frontons
July 1, 1988 through June 30 1989**

Jai-Alai Frontons		Days	Perf.	Paid Attendance	Pari-Mutuel Handle	Tax To State
Dania Jai-Alai Division	1987 - 1988	110	159	583,327	\$ 49,535,894	\$ 3,646,322
	1988 - 1989	<u>110</u>	<u>159</u>	<u>443,970</u>	<u>36,911,240</u>	<u>2,686,738</u>
	Difference	0	0	-139,357	-12,624,654	-959,584
	Pct Change	0	0	-24	-25	-26
Florida Jai-Alai, Inc.	1987 - 1988	205	304	370,057	34,752,314	2,415,384
	1988 - 1989	<u>170</u>	<u>252</u>	<u>215,389</u>	<u>19,533,206</u>	<u>1,338,224</u>
	Difference	-35	-52	-154,668	-15,219,108	-1,077,160
	Pct Change	-17	-17	-42	-44	-45
Fort Pierce Jai-Alai	1987-1988	146	220	223,095	18,393,452	1,042,978
	1988-1989	<u>189</u>	<u>284</u>	<u>232,896</u>	<u>18,139,886</u>	<u>694,548</u>
	Difference	43	64	9,801	-253,566	-348,430
	Pct Change	29	29	4	-1	-33
Golden Crown Corporation	1987 - 1988	142	175	122,748	11,268,542	404,023
	1988 - 1989	<u>159</u>	<u>197</u>	<u>99,908</u>	<u>8,783,855</u>	<u>246,146</u>
	Difference	17	22	-22,840	-2,484,687	-157,877
	Pct Change	12	13	-19	-22	-39
Miami Jai-Alai	1987 - 1988	107	159	572,466	59,175,719	4,321,280
	1988 - 1989	<u>110</u>	<u>164</u>	<u>453,102</u>	<u>42,924,646</u>	<u>3,116,350</u>
	Difference	3	5	-119,364	-16,251,073	-1,204,930
	Pct Change	3	3	-21	-27	-28
Ocala Jai-Alai	1987 - 1988	191	289	260,282	23,107,812	1,244,639
	1988 - 1989	<u>120</u>	<u>184</u>	<u>121,125</u>	<u>9,014,157</u>	<u>293,871</u>
	Difference	-71	-105	-139,157	-14,093,655	-950,768
	Pct Change	-37	-36	-53	-61	-76
Sports Palace, Inc.	1987 - 1988	230	337	327,272	24,055,465	1,144,198
	1988 - 1989	<u>179</u>	<u>265</u>	<u>130,264</u>	<u>10,001,961</u>	<u>298,325</u>
	Difference	-51	-72	-197,008	-14,053,504	-845,873
	Pct Change	-22	-21	-60	-58	-74
Summer Jai-Alai	1987 - 1988	101	153	409,185	41,601,956	3,013,292
	1988 - 1989	<u>106</u>	<u>159</u>	<u>352,926</u>	<u>34,324,983</u>	<u>2,459,470</u>
	Difference	5	6	-56,259	-7,276,973	-553,822
	Pct Change	5	4	-14	-17	-18
Summersport Enterprises, Ltd.	1987 - 1988	115	115	400,958	37,783,280	2,779,967
	1988 - 1989	<u>136</u>	<u>154</u>	<u>360,366</u>	<u>34,878,475</u>	<u>2,513,692</u>
	Difference	21	39	-40,592	-2,904,805	-266,275
	Pct Change	18	34	-10	-8	-10
Tampa Jai-Alai	1987-1988	151	228	646,014	53,776,692	4,208,728
	1988-1989	<u>265</u>	<u>401</u>	<u>664,306</u>	<u>56,141,842</u>	<u>4,122,988</u>
	Difference	114	173	18,292	2,365,150	-85,740
	Pct Change	75	76	3	4	-2

Comparative Data for Regular Performances - Jai-Alai Frontons
July 1, 1988 through June 30 1989 (Continued)

Jai-Alai Frontons		Days	Perf.	Paid Attendance	Pari-Mutuel Handle	Tax To State
The Fronton, Inc.	1987 - 1988	204	303	602,295	56,716,893	4,281,478
	1988 - 1989	<u>206</u>	<u>312</u>	<u>484,447</u>	<u>44,798,338</u>	<u>3,275,706</u>
	Difference	2	9	-117,848	-11,918,555	-1,005,772
	Pct Change	1	3	-20	-21	-23
Volusia Jai-Alai, Inc.	1987 - 1988	172	256	302,453	20,154,216	1,004,378
	1988 - 1989	<u>124</u>	<u>184</u>	<u>180,623</u>	<u>12,182,212</u>	<u>445,220</u>
	Difference	-48	-72	-121,830	-7,972,004	-559,158
	Pct Change	-28	-28	-40	-40	-56
TOTAL FOR JAI-ALAI FRONTONS	1987 - 1988	1,874	2,698	4,820,152	430,322,235	29,506,667
	1988 - 1989	<u>1,874</u>	<u>2,715</u>	<u>3,739,322</u>	<u>327,634,801</u>	<u>21,491,278</u>
	Difference	0	17	-1,080,830	\$ -102,687,434	\$ -8,015,389
	Pct Change	0	1	-22	-24	-27

GREYHOUND RACING

Florida's greyhound racing industry is the largest in the nation; handle and attendance are more than triple that of any other greyhound racing state. Of the fifty-two greyhound tracks in the eighteen states where greyhound racing is legal, eighteen are in Florida. As such, Florida attracts some of the finest racing animals in the world. It would be impossible to name all of the major stakes races conducted at Florida greyhound tracks. However, among the highlights of the racing year are the Biscayne \$125,000 Florida World Challenge Stakes, the \$70,000 Hollywood World Classic, the \$60,000 Tampa Greyhound Track Distance Championship, Derby Lane's 63rd Annual Derby and the Flagler \$150,000 International Classic. In addition, Florida's greyhound racing industry can boast some of the largest and most beautiful racetracks in the world.

Showing a decrease over the prior year, \$1,002,169,566 was wagered by 9,092,595 patrons at 3,903 regular performances during fiscal 1988-1989. Greyhound racing contributed 70% of the state's total collections from pari-mutuel wagering performances.

Under Florida Law, greyhound permitholders are obligated to pay a certain portion of their total handle to greyhound owners in the form of purses. Racing associations pay either 3% of the handle or the amount provided by current contract between the association and a kennel, whichever is greater, and shall not pay less than the percentage of handle paid in purses, by contract, for the 1978-1979 race meet. Last year, Florida greyhound tracks reported paying \$30,154,137 in purses.

Comparative Data for Regular Performances - Greyhound Racing
July 1, 1988 Through June 30, 1989

Racing Association		Days	Perf.	Paid Attendance	Pari-Mutuel Handle	Tax To State
Associated Outdoor Clubs, Inc.	1987 - 1988	104	156	737,056	\$ 89,765,054	\$ 7,395,301
	1988 - 1989	<u>104</u>	<u>158</u>	<u>601,829</u>	<u>73,538,138</u>	<u>6,037,214</u>
	Difference	0	2	-135,227	-16,226,916	-1,358,087
	Pct Change	0	1	-18	-18	-18

Comparative Data for Regular Performances - Greyhound Racing
July 1, 1988 Through June 30, 1989 (Continued)

Racing Association		Days	Perf.	Paid Attendance	Pari-Mutuel Handle	Tax To State
Bayard Raceways, Inc.	1987 - 1988	154	205	389,267	51,454,238	3,875,886
	1988 - 1989	<u>90</u>	<u>121</u>	<u>231,651</u>	<u>29,622,931</u>	<u>2,227,124</u>
	Difference	-64	-84	-157,616	-21,831,307	-1,648,762
	Pct Change	-42	-41	-40	-42	-43
Berenson's Pari-Mutuel, Inc.	1987 - 1988	141	162	59,066	5,700,932	148,840
	1988 - 1989	<u>141</u>	<u>156</u>	<u>55,926</u>	<u>5,439,467</u>	<u>144,524</u>
	Difference	0	-6	-3,140	-261,465	-4,316
	Pct Change	0	-4	-5	-5	-3
Biscayne Kennel Club, Inc.	1987 - 1988	49	73	294,736	42,384,838	3,503,942
	1988 - 1989	<u>160</u>	<u>241</u>	<u>862,052</u>	<u>119,938,163</u>	<u>9,857,322</u>
	Difference	111	168	567,316	77,553,325	6,353,380
	Pct Change	227	230	192	183	181
Bonita Ft. Myers Corporation	1987 - 1988	229	344	736,552	70,051,221	6,008,168
	1988 - 1989	<u>281</u>	<u>414</u>	<u>826,140</u>	<u>72,119,560</u>	<u>5,800,000</u>
	Difference	52	70	89,588	2,068,339	-208,168
	Pct Change	23	20	12	3	-3
Investment Corp. of Palm Beach	1987 - 1988	188	285	883,619	99,422,669	8,331,262
	1988 - 1989	<u>193</u>	<u>298</u>	<u>886,433</u>	<u>93,643,473</u>	<u>7,631,102</u>
	Difference	5	13	2,814	-5,779,196	-700,160
	Pct Change	3	5	0	-6	-8
Investment Corp. of South Florida	1987 - 1988	104	156	843,108	101,236,505	8,350,321
	1988 - 1989	<u>104</u>	<u>156</u>	<u>857,157</u>	<u>97,524,962</u>	<u>8,051,788</u>
	Difference	0	0	14,049	-3,711,543	-298,533
	Pct Change	0	0	2	-4	-4
Jacksonville Kennel Club, Inc.	1987 - 1988	49	68	174,798	20,642,472	1,564,480
	1988 - 1989	<u>133</u>	<u>180</u>	<u>478,667</u>	<u>53,180,418</u>	<u>4,071,931</u>
	Difference	84	112	303,869	32,537,946	2,507,451
	Pct Change	171	165	174	158	160
Jefferson County Kennel Club, Inc.	1987 - 1988	165	180	221,407	23,378,994	1,604,034
	1988 - 1989	<u>182</u>	<u>184</u>	<u>218,317</u>	<u>22,435,009</u>	<u>1,509,845</u>
	Difference	17	4	-3,090	-943,985	-94,189
	Pct Change	10	2	-1	-4	-6
Orange Park Kennel Club, Inc.	1987 - 1988	104	145	363,507	45,984,243	3,509,058
	1988 - 1989	<u>86</u>	<u>120</u>	<u>301,802</u>	<u>34,873,174</u>	<u>2,647,992</u>
	Difference	-18	-25	-61,705	-11,111,069	-861,066
	Pct Change	-17	-17	-17	-24	-25

Comparative Data for Regular Performances -- Greyhound Racing (Continued)
July 1, 1988 Through June 30, 1989

Racing Association		Days	Perf.	Paid Attendance	Pari-Mutuel Handle	Tax To State
Pensacola Greyhound Track, Inc.	1987 - 1988	170	246	341,004	\$ 29,445,592	\$ 2,022,574
	1988 - 1989	<u>305</u>	<u>453</u>	<u>468,119</u>	<u>44,244,655</u>	<u>3,088,033</u>
	Difference	135	207	127,115	14,799,063	1,065,459
	Pct Change	79	84	37	50	53
St. Petersburg Kennel Club, Inc.	1987 - 1988	105	159	896,575	103,005,985	8,086,936
	1988 - 1989	<u>105</u>	<u>159</u>	<u>914,862</u>	<u>99,432,991</u>	<u>7,871,313</u>
	Difference	0	0	18,287	-3,572,994	-215,623
	Pct Change	0	0	2	-3	-3
Sanford Orlando Kennel Club, Inc.	1987 - 1988	153	231	505,762	59,624,580	4,994,083
	1988 - 1989	<u>151</u>	<u>228</u>	<u>474,423</u>	<u>57,373,237</u>	<u>4,615,905</u>
	Difference	-2	-3	-31,339	-2,251,343	-378,178
	Pct Change	-1	-1	-6	-4	-8
Sarasota Kennel Club, Inc.	1987 - 1988	102	155	426,607	50,724,041	4,121,988
	1988 - 1989	<u>101</u>	<u>153</u>	<u>368,082</u>	<u>45,315,155</u>	<u>3,675,609</u>
	Difference	-1	-2	-58,525	-5,408,886	-446,379
	Pct Change	-1	-1	-14	-11	-11
Seminole Greyhound Park, Inc.	1987 - 1988	154	231	388,731	42,399,954	3,451,905
	1988 - 1989	<u>155</u>	<u>232</u>	<u>384,912</u>	<u>40,361,681</u>	<u>3,215,165</u>
	Difference	1	1	-3,819	-2,038,273	-236,740
	Pct Change	1	0	-1	-5	-7
Seminole Racing, Inc. d/b/a Daytona Beach Kennel Club	1987 - 1988	214	313	589,945	51,613,592	3,860,407
	1988 - 1989	<u>260</u>	<u>388</u>	<u>689,877</u>	<u>62,324,440</u>	<u>4,477,561</u>
	Difference	46	75	99,932	10,710,848	617,154
	Pct Change	21	24	17	21	16
Washington County Kennel Club, Inc.	1987 - 1988	180	220	231,615	24,306,748	1,597,265
	1988 - 1989	<u>157</u>	<u>189</u>	<u>238,078</u>	<u>20,397,274</u>	<u>1,352,130</u>
	Difference	-23	-31	6,463	-3,909,474	-245,135
	Pct Change	-13	-14	3	-16	-15
West Flagler Associates, Inc.	1987 - 1988	157	239	836,999	113,668,755	9,342,329
	1988 - 1989	<u>49</u>	<u>73</u>	<u>234,268</u>	<u>30,404,838</u>	<u>2,483,516</u>
	Difference	-108	-166	-602,731	-83,263,917	-6,858,813
	Pct Change	-69	-69	-72	-73	-73
TOTAL FOR ALL GREYHOUND TRACKS	1987 - 1988	2,522	3,568	8,920,354	1,024,810,413	81,768,779
	1988 - 1989	<u>2,757</u>	<u>3,903</u>	<u>9,092,595</u>	<u>1,002,169,566</u>	<u>78,758,074</u>
	Difference	235	335	172,241	-22,640,847	-3,010,705
	Pct Change	9	9	2	-2	-4
TOTAL FOR ALL TRACKS AND FRONTONS	1987 - 1988	4,963	6,833	16,708,292	2,006,768,479	125,376,775
	1988 - 1989	<u>5,170</u>	<u>7,160</u>	<u>15,719,962</u>	<u>1,850,283,419</u>	<u>113,359,942</u>
	Difference	207	327	-988,330	\$-156,485,060	\$-12,016,833
	Pct Change	4	5	-6	-8	-10

**Paid Attendance, Pari-Mutuel Handle, State Revenue
Fiscal Year 1931-32 Through Fiscal Year 1988-1989**

Fiscal Year	No. of Racing Days	Total Paid Attendance	Total Pari-Mutuel Handle	State Revenue As a Percent of Handle	Total State Revenue
1931-1932	462	1,157,161	\$ 17,365,424	4.25%	\$ 737,301
1932-1933	550	1,281,017	19,146,938	3.99	763,877
1933-1934	609	1,591,024	27,549,567	3.89	1,072,364
1934-1935	775	2,024,636	36,577,493	3.83	1,401,177
1935-1936	906	1,854,292	38,826,132	3.70	1,436,957
1936-1937	1,029	2,330,964	50,121,647	3.67	1,838,339
1937-1938	1,053	2,401,367	54,047,114	3.64	1,969,741
1938-1939	1,025	2,373,271	55,272,416	3.62	2,000,759
1939-1940	1,057	2,517,436	64,388,377	3.58	2,302,834
1940-1941	902	2,695,464	68,280,202	3.57	2,436,374
1941-1942	972	2,195,080	63,601,585	6.91	4,392,862
1942-1943	734	854,256	26,658,646	4.00	1,066,088
1943-1944	982	2,458,933	109,561,969	6.23	6,824,273
1944-1945	333	945,341	35,171,557	5.71	2,007,853
1945-1946	1,442	4,448,084	211,571,289	7.35	15,554,034
1946-1947	1,298	4,444,543	194,710,333	7.54	14,680,731
1947-1948	1,318	4,344,479	180,647,561	7.50	13,542,407
1948-1949	1,404	4,641,038	178,171,736	7.42	13,222,462
1949-1950	1,377	4,539,742	178,842,858	7.33	13,101,522
1950-1951	1,378	4,643,293	204,385,597	7.34	14,997,486
1951-1952	1,432	5,279,674	248,728,380	7.27	18,090,498
1952-1953	1,549	5,732,369	272,696,059	7.24	19,734,514
1953-1954	1,722	5,812,577	276,681,999	7.24	20,026,022
1954-1955	1,731	5,809,467	284,044,131	7.22	20,521,463
1955-1956	1,879	5,915,941	310,681,432	7.78	24,180,834
1956-1957	1,907	6,035,932	322,948,073	7.73	24,969,497
1957-1958	2,012	5,626,152	315,546,506	7.70	24,306,950
1958-1959	2,055	5,966,709	329,141,335	7.64	25,157,460
1959-1960	2,180	6,209,688	347,947,488	7.65	26,609,332
1960-1961	2,216	6,328,535	344,173,946	7.60	26,163,298
1961-1962	2,273	6,735,583	363,082,896	7.55	27,420,986
1962-1963	2,276	6,919,691	374,598,480	7.58	28,392,064
1963-1964	2,335	7,878,991	418,056,340	7.54	31,503,458
1964-1965	2,318	8,537,248	462,298,032	7.57	34,984,262
1965-1966	2,498	8,969,589	500,471,936	7.53	37,667,499
1966-1967	2,596	9,020,232	515,430,636	7.45	38,408,241
1967-1968	2,537	9,459,239	563,772,040	7.45	41,980,547
1968-1969	2,623	9,912,630	630,034,977	7.42	46,743,700
1969-1970	2,678	10,735,962	712,244,838	7.28	51,882,798
1970-1971	2,873	11,737,046	778,550,830	7.18	55,876,622
1971-1972	2,959	12,769,157	864,502,920	7.06	61,038,725
1972-1973	3,019	13,747,714	978,174,354	7.02	68,669,716
1973-1974	3,160	14,883,698	1,083,208,538	7.05	76,315,213
1974-1975	3,229	16,192,983	1,156,152,799	7.23	83,593,772
1975-1976	3,252	16,293,398	1,168,767,050	7.27	84,996,163
1976-1977	3,307	16,276,898	1,244,159,788	7.18	89,376,224
1977-1978	3,416	16,789,933	1,361,155,037	6.70	91,211,859
1978-1979	3,514	17,274,154	1,547,072,800	6.71	103,829,406
1979-1980	3,380	16,223,047	1,588,944,696	6.73	107,009,883
1980-1981	3,711	17,074,874	1,683,134,201	6.59	110,861,171
1981-1982	3,660	16,959,977	1,712,354,503	6.56	112,323,447
1982-1983	3,723	17,002,197	1,754,139,978	6.60	115,740,365
1983-1984	3,699	16,692,861	1,824,552,088	6.58	120,130,754
1984-1985	3,675	16,543,816	1,848,080,598	6.70	123,878,295
1985-1986	3,731	16,214,301	1,847,125,994	6.66	123,038,667
1986-1987	3,821	16,505,736	1,954,603,904	6.62	129,449,033
1987-1988	4,963	16,708,292	2,006,768,479	6.48	130,021,801
1988-1989	5,170	15,719,962	1,850,283,419	6.40	118,466,567
TOTAL	128,685	492,237,674	\$ 37,659,209,941	6.88%	\$ 2,589,920,547

CAPITAL IMPROVEMENTS

In 1979, Florida's legislature provided that part of the handle at Florida's tracks and frontons could be withheld for the purpose of capital improvements which would benefit the patrons of Florida's wagering facilities, and defray some State and Federal taxes. The effect of the program has been to modernize and improve Florida's pari-mutuel facilities. Each year clubhouses and grandstands are refurbished, public areas are renovated, and appearances generally improved. Thirty-five of Florida's thirty-seven active permitholders requested use of these funds during fiscal year 1988-1989, demonstrating a continuing commitment to providing the finest racing and jai-alai facilities in the country.

Withholdings since the implementation of the capital improvement program have been:

1979-1980	\$ 383,429
1980-1981	8,260,822
1981-1982	10,085,297
1982-1983	10,569,059
1983-1984	11,372,754
1984-1985	16,246,829
1985-1986	16,522,667
1986-1987	17,400,436
1987-1988	17,279,255
1988-1989	<u>16,946,303</u>
TOTAL	<u>\$125,066,851</u>

CHARITY AND SCHOLARSHIP PERFORMANCES

With several exceptions, each track or fronton may operate up to five additional performances during a meet for the benefit of approved charities, major institutions of higher learning, community colleges, the Racing Scholarship Trust Fund, and the Historic Preservation Trust Fund. Recipient charities are selected by the association and approved by the Division based upon whether or not they meet the basic requirements for charitable organizations established by Florida law. The amount contributed to charitable organizations is determined by calculating the profits of the association for that performance plus the taxes that would have been due to the state had it been a regular performance. A minimum of \$1,083,214 was paid to charitable organizations in fiscal 1988-1989.

The Racing Scholarship Trust Fund is administered by the Florida Board of Regents, and is used to provide scholarships to deserving students who are attending Florida's universities.

As shown below, over \$16 million has been contributed to this fund since the program began forty years ago.

1950	\$ 165,830	1963	\$ 393,641	1976	\$ 740,842
1951	247,261	1964	399,898	1977	541,271
1952	239,148	1965	474,937	1978	543,991
1953	232,907	1966	462,441	1979	560,099
1954	280,507	1967	419,500	1980	663,573
1955	279,228	1968	541,389	1981	550,438
1956	299,071	1969	447,133	1982	393,987
1957	349,514	1970	495,388	1983	289,929
1958	366,482	1971	619,539	1984	172,776
1959	293,902	1972	717,037	1985	165,962
1960	364,819	1973	733,735	1986	149,711
1961	316,021	1974	949,802	1987	118,694
1962	408,652	1975	835,386	1988	89,732
				1989	<u>61,908*</u>
				TOTAL	<u>\$ 16,376,081</u>

*See Note 8 (Financial Section)

**SUMMARY OF ADDITIONAL DAYS OF RACING HELD FOR CHARITABLE PURPOSES
During Fiscal Year 1988-1989**

Racing Association	CHARITY			SCHOLARSHIP		
	Date	Paid Attendance	Pari-Mutuel Handle	Date	Paid Attendance	Pari-Mutuel Handle
Associated Outdoor Club, Inc.	09/22/88	1,498	\$ 203,911	09/15/88	1,406	\$ 191,544
	09/29/88	1,523	209,526	10/06/88	1,731	238,262
Bayard Raceways, Inc.	03/07/89	1,418	174,554			
	03/08/89	1,525	218,924			
	03/03/89	996	136,243			
Biscayne Kennel Club, Inc.	11/08/88	2,902	414,833			
	11/29/88	2,047	266,591			
Bonita Ft. Myers Corporation	07/14/88	1,080	100,352	05/16/89	1,073	110,483
	07/19/88	919	91,978	06/13/89	1,001	90,368
	05/23/89	946	84,809			
	05/31/89	815	98,297			
	06/20/89	963	86,434			
Investment Corp. of Palm Beach	05/09/89	1,743	190,629	10/06/88	1,579	181,568
	05/16/89	1,683	200,103	10/31/88	1,681	215,013
	05/23/89	1,572	193,318			
Investment Corp. of South Florida	04/12/89	3,644	425,936			
	04/19/89	3,298	386,594			
Jefferson Kennel Club, Inc.	08/31/88	824	96,036			
Orange Park Kennel Club, Inc.	01/10/89	1,640	220,890			
	01/11/89	1,673	213,468			
	01/17/89	1,919	256,272			
Pensacola Greyhound Track, Inc.	08/08/89	742	73,498	01/30/89	734	63,689
	08/15/88	761	57,962	04/03/89	1,073	108,812
	02/06/89	915	78,310			
	06/05/89	1,111	109,791			
St. Petersburg Kennel Club, Inc.	02/17/89	3,596	438,346	02/24/89	3,762	430,458
	03/03/89	3,668	481,892			
	04/28/89	2,049	283,409			
Sanford Orlando Kennel Club, Inc.	01/10/89	1,612	230,742	01/03/89	1,584	186,877
				01/17/89	1,688	214,710
				01/24/89	1,799	216,982
				01/31/89	1,790	222,903
Sarasota Kennel Club, Inc.	05/09/89	2,462	246,699			
	05/16/89	2,421	268,655			
	05/23/89	2,090	228,724			

SUMMARY OF ADDITIONAL DAYS OF RACING HELD FOR CHARITABLE PURPOSES (Continued)
During Fiscal Year 1988-1989

Racing Association	Date	CHARITY		SCHOLARSHIP		
		Paid Attendance	Pari-Mutuel Handle	Date	Paid Attendance	Pari-Mutuel Handle
Seminole Greyhound Park, Inc.	05/26/89	711	\$ 92,200			
	06/28/89	1,143	143,843			
Seminole Racing, Inc. d/b/a Daytona Beach Kennel Club	05/17/89	1,271	126,155	05/03/89	1,177	\$ 108,937
	05/24/89	1,183	102,713	05/10/89	1,279	119,249
Washington County Kennel Club, Inc.				06/26/89	294	39,485
Dania Jai-Alai Division	01/06/89	971	124,324	11/15/88	1,373	138,081
	01/13/89	1,121	130,801	12/20/88	1,420	152,071
	01/20/89	1,010	116,536			
Florida Jai-Alai, Inc.	08/22/88	590	62,490			
	01/05/89	781	80,061			
	01/12/89	815	86,000			
Fort Pierce Jai-Alai	08/01/88	254	24,788	03/20/89	660	49,355
	08/08/88	371	31,028	03/27/89	605	47,123
	08/15/88	365	36,191	05/01/89	469	45,057
	08/22/88	375	37,717			
	08/29/88	313	29,015			
	04/17/89	534	51,421			
	04/24/89	466	42,878			
Golden Crown Corporation	10/10/88	107	8,387			
	12/12/88	121	11,280			
	01/16/89	313	29,966			
	02/20/89	113	10,584			
	03/20/89	90	7,468			
Miami Jai-Alai	03/01/89	1,986	225,070	02/15/89	1,968	197,417
	03/08/89	2,038	237,625	02/22/89	2,160	222,433
				03/15/89	2,124	212,970
Ocala Jai-Alai	10/20/88	405	24,395			
	10/27/88	403	23,708			
	11/03/88	462	34,831			
Sports Palace, Inc.	07/20/88	204	17,358	09/26/88	318	22,063
	07/27/88	224	18,451			
	10/24/88	306	25,872			
	10/31/88	298	24,292			
Summersport Enterprises, Ltd.	09/07/88	1,545	168,712	09/20/88	1,680	190,129
	09/24/89	1,485	157,889	09/21/88	1,665	172,625
	09/28/88	1,802	193,104			
	05/30/89	951	102,629			

SUMMARY OF ADDITIONAL DAYS OF RACING HELD FOR CHARITABLE PURPOSES (Continued)
During Fiscal Year 1988-1989

Racing Association	CHARITY			SCHOLARSHIP		
	Date	Paid Attendance	Pari-Mutuel Handle	Date	Paid Attendance	Pari-Mutuel Handle
Tampa Jai-Alai	04/18/89	1,384	\$ 121,156	04/04/89	1,370	\$ 122,684
	04/25/89	1,263	115,456	04/11/89	1,358	117,287
	05/02/89	1,221	115,147			
The Fronton, Inc.	10/06/88	721	92,919	10/27/88	730	86,220
	11/08/88	1,144	122,509	05/25/89	831	89,588
	04/27/89	960	95,551			
Volusia Jai-Alai, Inc.	05/22/89	1,024	55,960	06/27/89	728	53,552
	06/20/89	740	47,091			
Calder Race Course, Inc.	10/25/88	3,292	685,076			
Hialeah, Inc.	05/09/89	3,124	694,357			
	05/11/89	2,799	632,369			
	05/16/89	2,676	650,320			
	05/18/89	2,515	584,223			
	05/23/89	2,807	652,680			
	05/25/89	2,418	538,963			
Tampa Bay Downs, Inc.	12/28/88	4,110	404,991	01/04/89	3,462	392,637
	12/29/88	3,878	417,303	01/09/89	2,523	306,752
	01/05/89	3,086	382,610			
	01/11/89	4,805	446,796			
	01/18/89	4,948	441,598			
Pompano Park Associates, Ltd. - Harness	11/03/88	1,890	331,952	10/20/88	2,073	265,635
	11/10/88	2,722	406,243	10/27/88	2,932	343,275
	11/17/88	3,080	453,880			
TOTAL		<u>137,789</u>	<u>\$ 17,896,658</u>		<u>54,100</u>	<u>\$ 5,966,294</u>

ABANDONED WINNING TICKETS

Abandoned tickets are winning tickets which have not been cashed. A winning pari-mutuel ticket is valid for one year. At the end of that time, the value of greyhound and jai-alai tickets escheat to the state. These funds are deposited to the State School Fund, and are used for the support and maintenance of Florida's public schools. \$3,727,551 was collected in abandoned winning tickets this fiscal year for the State School Fund. The following chart shows yearly receipts since 1957, when the Division began collecting these funds.

1957	\$ 3,992	1968	\$ 448,161	1979	\$ 2,011,456
1958	204,449	1969	513,254	1980	1,881,069
1959	240,545	1970	590,891	1981	1,884,234
1960	311,045	1971	666,405	1982	2,095,480
1961	403,904	1972	706,391	1983	2,537,583
1962	273,273	1973	943,268	1984	2,644,804
1963	265,046	1974	1,136,606	1985	3,082,639
1964	292,194	1975	1,288,318	1986	3,178,266
1965	320,530	1976	1,429,361	1987	3,322,123
1966	425,130	1977	1,449,016	1988	3,160,635
1967	381,857	1978	1,582,011	1989	<u>3,727,551*</u>
				TOTAL	<u>\$ 43,401,487</u>

In thoroughbred, harness, and quarter horse racing, outstanding tickets are paid to the respective breeders' associations. All of these funds are used to promote the Florida horse breeding industry and are outlined in the Collections for Promotional Trust Funds and Breeders' Associations on page 12.

*See Note 8 (Financial Section)

REVENUES AND OTHER DATA BY ASSOCIATION

ASSOCIATED OUTDOOR CLUBS, INC.

P.O. Box 8096
Tampa, Florida 33674

Greyhound Track - Tampa, Florida
104 Racing Days - September 6, 1988 to January 4, 1989 - 158 Performances

OFFICERS

Harry J. Hater, Jr. Chairman of the Board
John M. Hater, President
Charles W. Bidwill, Jr. Secretary
James E. Heile, Assistant Treasurer

James J. Patton, Vice President
Harry J. Hater, Jr. Treasurer
Robert E. Hater, II, Assistant Secretary
William H. Johnston, Jr., Assistant Treasurer

DIRECTORS

Charles W. Bidwill, Jr.
James E. Heile
James H. Patton
John M. Hater

Robert E. Hater II
William H. Johnston, Jr.
Harry J. Hater, Jr.

Distribution of Handle	
Total Paid to Public	\$ 58,599,150
Total for State	5,956,841
Total for Track/Fronton	<u>8,982,147</u>
Grand Total Handle	<u>\$ 73,538,138</u>

Other State Income - Admission Tax	<u>\$ 80,373</u>
------------------------------------	------------------

Average Performance: \$465,431
Average Wager Per Capita-Based on Taxable Admissions: \$122
Average Paid Attendance Per Performance: 3,809

Total Purses Paid: 1988 - 1989 Season \$2,231,418
Seating Capacity: 6,600 - Parking: 3,900 Spaces
Track: Length 1320'/Stretch 589'/Width 19'
Equipment: Autotote, Ltd., Single Outside Lure

BAYARD RACEWAYS, INC.

d/b/a St. John's Greyhound Park
P.O. Box 54249
Jacksonville, Florida 32245

Greyhound Track - Jacksonville, Florida
46 Racing Days - March 6, 1989 to April 29, 1989 - 61 Performances
44 Racing Days - October 3, 1988 to November 22, 1988 - 60 Performances

OFFICERS

James J. Patton, Chairman of the Board
Charles W. Bidwill, Secretary/Treasurer
John C. Howell, Assistant Treasurer

Howard I. Korman, President
William H. Johnston, Jr., Vice President
Robert J. Pitocchelli, Assistant Secretary/Vice President

DIRECTORS

James J. Patton
Charles W. Bidwill
William R. Burnett
Robert J. Pitocchelli

John C. Howell
William H. Johnston, Jr.
Lucile Patton
Howard I. Korman

Distribution of Handle	
Total Paid to Public	\$ 23,882,347
Total for State	2,203,959
Total for Track/Fronton	<u>3,536,625</u>
Grand Total Handle	<u>\$ 29,622,931</u>
Other State Income - Admission Tax	<u>\$ 23,165</u>

Average Performance: \$244,818
Average Wager Per Capita-Based on Taxable Admissions: \$128
Average Paid Attendance Per Performance: 1,914

Total Purses Paid: 1988 - 1989 Season \$904,580
Seating Capacity: 3,000 - Parking: 3,000 Spaces
Track: Length 1320'/Stretch 583'/Width 20'
Equipment: Autotote, Ltd., Single Outside Lure

BERENSON PARI-MUTUEL, INC.

350 Fifth Avenue
Key West, Florida 33040

Greyhound Track - Key West, Florida
141 Racing Days - November 1, 1988 to April 15, 1989 - 156 Performances

OFFICERS

Richard B. Berenson, President
Louis S. Berenson, Chairman of the Board
Bennett J. Wayler, Controller

Mary F. Berenson, Vice President
Diane B. Watson, Assistant Secretary/Treasurer
William McLaughlin, Secretary

DIRECTORS

Louis S. Berenson
Mary F. Berenson

Richard B. Berenson
Diane B. Watson

Distribution of Handle

Total Paid to Public	\$ 4,335,278
Total for State	137,813
Total for Track/Fronton	<u>966,376</u>
Grand Total Handle	<u>\$ 5,439,467</u>

Other State Income - Admission Tax \$ 6,711

Average Performance: \$34,868

Average Wager Per Capita-Based on Taxable Admission: \$97

Average Paid Attendance Per Performance: 359

Total Purses Paid: 1988 - 1989 Season \$175,096

Seating Capacity: 700 - Parking: 650 Spaces

Track: Length 1320'/Stretch 288'/Width 18'

Equipment: United Totalisator Co.

BISCAYNE KENNEL CLUB, INC.

320 N.W. 115th Street
Miami Shores, Florida 33168

Greyhound Track - Miami, Florida
104 Racing Days - October 31, 1988 to June 29, 1989 - 156 Performances
56 Racing Days - July 1, 1988 to September 3, 1988 - 85 Performances

OFFICERS

James C. Knight, President
W. Robert Kuhn, Jr., Treasurer
Ellen W. Spitzer, Secretary

Oscar J. Padron, Assistant Treasurer
Ellen W. McDonnell, Executive Vice President

DIRECTORS

John R. Knight
Jack G. Admire
James C. Knight
Ellen W. Spitzer
Ellen W. McDonnell

William Allen, Jr.
Atwood Dunwody
John D. Armstrong
Marilyn A. West

Distribution of Handle
Total Paid to Public
Total for State
Total for Track/Fronton
Grand Total Handle

\$ 95,588,345
9,746,491
14,603,327
\$ 119,938,163

Other State Income - Admission Tax

\$ 110,831

Average Performance: \$497,669
Average Wager Per Capita-Based on Taxable Admissions: \$139
Average Paid Attendance Per Performance: 3,577

Total Purses Paid: 1988 - 1989 Season \$3,636,789
Seating Capacity: 8,900 - Parking: 6,500 Spaces
Track: Length 1485'/Stretch 352'/Width 19'
Equipment: American Totalisator Co., Inc., Alldritt Inside Double Lure

BONITA FT. MYERS CORPORATION

P.O. Box 2567
Bonita Springs, Florida 33959

Greyhound Track - Bonita Springs, Florida
251 Racing Days - September 5, 1988 to June 30, 1989 - 374 Performances
30 Racing Days - July 1, 1988 to August 6, 1988 - 40 Performances

OFFICERS

Paul Lewin, President
Pete Wedeles, Assistant Secretary/Treasurer

Fred Havenick, Vice President/Secretary

DIRECTORS

Paul Lewin
Pete Wedeles

Fred Havenick

Distribution of Handle	
Total Paid to Public	\$ 57,494,291
Total for State	5,678,554
Total for Track/Fronton	<u>8,946,715</u>
Grand Total Handle	<u>\$ 72,119,560</u>

Other State Income - Admission Tax \$ 121,446

Average Performance: \$174,202
Average Wager Per Capita-Based on Taxable Admissions: \$87
Average Paid Attendance Per Performance: 1,996

Total Purses Paid: 1988 - 1989 Season \$2,264,121
Seating Capacity: 3,500 - Parking: 2,700 Spaces
Track: Length 1320'/Stretch 469'/Width 18'
Equipment: Autotote, Ltd., Autotrack II and S.A.M.S.

INVESTMENT CORP. OF PALM BEACH

1111 North Congress Avenue
West Palm Beach, Florida 33409

Greyhound Track - West Palm Beach, Florida
170 Racing Days - September 30, 1988 to June 30, 1989 - 265 Performances
23 Racing Days - July 1, 1988 to August 1, 1988 - 33 Performances

OFFICERS

Patrick J. Rooney, President
John J. Rooney, Vice President
Daniel M. Rooney, Treasurer

Timothy J. Rooney, Vice President
Arthur J. Rooney, Jr., Secretary
Arthur J. Laughlin, Asst. Treasurer/Asst. Secretary

DIRECTORS

John J. Rooney
Daniel M. Rooney
Patrick J. Rooney

Arthur J. Rooney, Jr.
Timothy J. Rooney

Distribution of Handle
Total Paid to Public
Total for State
Total for Track/Fronton
Grand Total Handle

\$ 74,783,573
7,494,220
11,365,680
\$ 93,643,473

Other State Income - Admission Tax

\$ 136,882

Average Performance: \$314,240
Average Wager Per Capita-Based on Taxable Admissions: \$106
Average Paid Attendance Per Performance: 2,975

Total Purses Paid: 1988 - 1989 Season \$2,898,872
Seating Capacity: 4,100 - Parking: 3,400 Spaces
Track: Length 1320'/Stretch 350'/Width 20'
Equipment: Autotote, Ltd., Inside Single Lure

INVESTMENT CORP. OF SOUTH FLORIDA

d/b/a Hollywood Greyhound Track

P.O. Box 2007

Hollywood, Florida 33022

Greyhound Track - Hollywood, Florida

104 Racing Days - December 26, 1988 to April 25, 1989 - 156 Performances

OFFICERS

Bernard Hartman, President
Joseph Lipson, Treasurer

Herbert Tyner, Vice President/Secretary

DIRECTORS

Herbert Tyner
Bernard Hartman

Walter Muller

Distribution of Handle

Total Paid to Public

\$ 77,910,963

Total for State

7,957,034

Total for Track/Fronton

11,656,965

Grand Total Handle

\$ 97,524,962

Other State Income - Admission Tax

\$ 94,754

Average Performance: \$625,160

Average Wager Per Capita-Based on Taxable Admissions: \$114

Average Paid Attendance Per Performance: 5,495

Total Purses Paid: 1988 - 1989 Season \$2,661,187

Seating Capacity: 9,000 - Parking: 5,000 Spaces

Track: Length 1372'/Stretch 300'/Width 22'

Equipment: Autotote, Ltd., Inside Double Lure J-25

JACKSONVILLE KENNEL CLUB, INC.

P.O. Box 54249
Jacksonville, Florida 32245

Greyhound Track - Jacksonville, Florida
53 Racing Days - May 1, 1989 to June 30, 1989 - 71 Performances
80 Racing Days - July 1, 1988 to October 1, 1988 - 109 Performances

OFFICERS

James J. Patton, Chairman of the Board
William H. Johnston, Jr., Vice President
John C. Howell, Assistant Treasurer

Howard I. Korman, President
Charles W. Bidwill, Secretary/Treasurer
Robert J. Pitocchelli, Vice President/Asst. Secretary

DIRECTORS

James J. Patton
William R. Burnett
Charles W. Bidwill
John C. Howell

Lucile Patton
Robert J. Pitocchelli
William H. Johnston, Jr.
Howard I. Korman

Distribution of Handle
Total Paid to Public
Total for State
Total for Track/Fronton
Grand Total Handle

\$ 42,817,439
4,024,064
6,338,915
\$ 53,180,418

Other State Income - Admission Tax

\$ 47,867

Average Performance: \$295,447
Average Wager Per Capita-Based on Taxable Admissions: \$111
Average Paid Attendance Per Performance: 2,659

Total Purses Paid: 1988 - 1989 Season \$1,595,413
Seating Capacity: 4,000 - Parking: 2,400 Spaces
Track: Length 1320'/Stretch 586'/Width 20'
Equipment: Autotote, Ltd., Inside Single Lure

JEFFERSON COUNTY KENNEL CLUB, INC.

P.O. Box 400
Monticello, Florida 32344

Greyhound Track - Monticello, Florida
103 Racing Days - March 3, 1989 to June 30, 1989 - 103 Performances
79 Racing Days - July 1, 1988 to October 1, 1988 - 81 Performances

OFFICERS.

Nathaniel W. Polak, Chairman of the Board
Steve Andris, President/Secretary/Treasurer

Roland D. Wagner, Vice-President

DIRECTORS:

John E. Petersen
Charles R. Hart
Roland D. Wagner

Nathaniel W. Polak
Steve Andris
W.C. Hawkins

Distribution of Handle	
Total Paid to Public	\$ 17,862,172
Total for State	1,483,647
Total for Track/Fronton	3,089,190
Grand Total Handle	<u>\$ 22,435,009</u>

Other State Income - Admission Tax	<u>\$ 26,198</u>
------------------------------------	------------------

Average Performance: \$121,929
Average Wager Per Capita-Based on Taxable Admissions: \$103
Average Paid Attendance Per Performance: 1,187

Total Purses Paid: 1988 - 1989 Season \$689,502
Seating Capacity: 2,000 - Parking: 1,400 Spaces
Track: Length 1426'/Stretch 361'/Width 20'
Equipment: American Totalisator Co., Inc., Alldritt Single Lure

ORANGE PARK KENNEL CLUB, INC.

P.O. Box 54249
Jacksonville, Florida 32245

Greyhound Track - Jacksonville, Florida
52 Racing Days - January 2, 1989 to March 4, 1989 - 72 Performances
34 Racing Days - November 23, 1988 to December 31, 1988 - 48 Performances

OFFICERS

Howard I. Korman, President
Charles W. Bidwill, Secretary/Treasurer
John C. Howell, Assistant Treasurer

William H. Johnston, Jr., Vice President
James J. Patton, Chairman of the Board
Robert J. Pitocchelli, Vice President/Asst. Secretary

DIRECTORS

John C. Howell
Charles W. Bidwill
William R. Burnett
Robert J. Pitocchelli

James J. Patton
William H. Johnston, Jr.
Lucile Patton
Howard I. Korman

Distribution of Handle	
Total Paid to Public	\$ 28,140,062
Total for State	2,617,812
Total for Track/Fronton	4,115,300
Grand Total Handle	<u>\$ 34,873,174</u>
Other State Income - Admission Tax	<u>\$ 30,180</u>

Average Performance: \$290,610
Average Wager Per Capita-Based on Taxable Admissions: \$116
Average Paid Attendance Per Performance: 2,515

Total Purses Paid: 1988 - 1989 Season \$1,066,914
Seating Capacity: 3,500 - Parking: 2,100 Spaces
Track: Length 1320'/Stretch 577'/Width 20'
Equipment: Autotote, Ltd., Inside Single Lure

PENSACOLA GREYHOUND TRACK, INC.

P.O. Box 12824
Pensacola, Florida 32575-2824

Greyhound Track - Pensacola, Florida
155 Racing Days - January 2, 1989 to June 30, 1989 - 228 Performances
150 Racing Days - July 1, 1988 to December 23, 1988 - 225 Performances

OFFICERS

Joseph H. Wilson, Jr., President
Aldon Smith, Secretary

Joseph C. Martin, Treasurer

DIRECTORS

Joseph H. Wilson, Jr.
Aldon Smith
Joseph C. Martin

Perrine Palmer
Lum Morrison
Herman M. Maisel

Distribution of Handle

Total Paid to Public	\$ 35,397,727
Total for State	3,037,159
Total for Track/Fronton	<u>5,809,769</u>
Grand Total Handle	<u>\$ 44,244,655</u>

Other State Income - Admission Tax	<u>\$ 50,874</u>
------------------------------------	------------------

Average Performance: \$97,670
Average Wager Per Capita-Based on Taxable Admissions: \$95
Average Paid Attendance Per Performance: 1,033

Total Purses Paid: 1988 - 1989 Season \$1,241,023
Seating Capacity: 2,000 - Parking: 2,500 Spaces
Track: Length 1320'/Stretch 546'/Width 23'
Equipment: American Totalisator Co., Inc.

ST. PETERSBURG KENNEL CLUB, INC.

10490 Gandy Boulevard
St. Petersburg, Florida 33702

Greyhound Track - St. Petersburg, Florida
105 Racing Days - January 5, 1989 to May 6, 1989 - 159 Performances

OFFICERS

A. V. Weaver, Jr., President
Stephen P. Hlas, Treasurer/Secretary

Vey O. Weaver, Vice President
Richard B. Winning, Vice President

DIRECTORS

Patricia C. Baynard
Harry M. Piper
Mary Margaret Winning
Frances Weaver Nohren

Glenn E. Loughridge
A.V. Weaver, Jr.
Lynn Andrews

Distribution of Handle
Total Paid to Public
Total for State
Total for Track/Fronton
Grand Total Handle

\$ 79,989,657
7,748,789
11,694,545
\$ 99,432,991

Other State Income - Admission Tax

\$ 122,524

Average Performance: \$625,365
Average Wager Per Capita-Based on Taxable Admissions: \$109
Average Paid Attendance Per Performance: 5,754

Total Purses Paid: 1988 - 1989 Season \$3,032,013
Seating Capacity: 8,300 - Parking: 5,250 Spaces
Track: Length 1320'/Stretch 458'/Width 21'
Equipment: Autotote, Ltd., Inside Single Lure

SANFORD ORLANDO KENNEL CLUB, INC.

Dogtrack Road
Longwood, Florida 32750

Greyhound Track - Longwood, Florida
151 Racing Days - November 1, 1988 to May 2, 1989 - 228 Performances

OFFICERS

Jerry Collins, Chairman of the Board
Mary M. Kelly, Executive Vice President/Treasurer
Catherine M. Kelly, Assistant Secretary/Assistant Treasurer

Katherine A. Nichols, President
Jack G. Collins, Secretary/Vice President

DIRECTORS

Catherine M. Kelly
Katherine A. Nichols
Jack G. Collins

Jerry Collins
Mary M. Kelly

Distribution of Handle
Total Paid to Public
Total for State
Total for Track/Fronton
Grand Total Handle

\$ 45,723,895
4,558,974
7,090,368
\$ 57,373,237

Other State Income - Admission Tax

\$ 56,931

Average Performance: \$251,637
Average Wager Per Capita-Based on Taxable Admissions: \$121
Average Paid Attendance Per Performance: 2,081

Total Purses Paid: 1988 - 1989 Season \$1,755,100
Seating Capacity: 4,000 - Parking: 4,000 Spaces
Track: Length 1320'/Stretch 322'/Width 18'
Equipment: Autotote, Ltd., Inside Double Lure

SARASOTA KENNEL CLUB, INC.

5400 Old Bradenton Road
Sarasota, Florida 33580

Greyhound Track - Sarasota, Florida
45 Racing Days - September 5, 1988 to June 30, 1989 - 69 Performances
56 Racing Days - July 1, 1988 to September 3, 1988 - 84 Performances

OFFICERS

Jerry Collins, Chairman of the Board/Treasurer/Secretary/General Mgr. Jack Collins, President/Track Mgr.

DIRECTORS

Jack Collins
Jerry Collins

Sherwin Simmons

Distribution of Handle

Total Paid to Public	\$ 36,117,800
Total for State	3,631,439
Total for Track/Fronton	<u>5,565,916</u>
Grand Total Handle	<u>\$ 45,315,155</u>

Other State Income - Admission Tax \$ 44,170

Average Performance: \$296,177

Average Wager Per Capita-Based on Taxable Admissions: \$123

Average Paid Attendance Per Performance: 2,406

Total Purses Paid: 1988 - 1989 Season \$1,381,777

Seating Capacity: 3,500 - Parking: 5,000 Spaces

Track: Length 1320'/Stretch 330'/Width 22'

Equipment: Autotote, Ltd., Inside Double Lure

SEMINOLE GREYHOUND PARK

2000 Seminola Boulevard
Casselberry, Florida 32707

Greyhound Track - Casselberry, Florida
51 Racing Days - May 3, 1989 to June 30, 1989 - 75 Performances
104 Racing Days - July 1, 1988 to October 29, 1988 - 157 Performances

OFFICERS

Stephen B. Manion, President
Frank Michels, Vice President/Treasurer

Janice R. Trybus, Secretary

DIRECTORS

Frank Michels

Janice R. Trybus

Distribution of Handle

Total Paid to Public	\$ 32,194,854
Total for State	3,156,182
Total for Track/Fronton	<u>5,010,645</u>
Grand Total Handle	<u>\$ 40,361,681</u>

Other State Income - Admission Tax	<u>\$ 58,983</u>
------------------------------------	------------------

Average Performance: \$173,973

Average Wager Per Capita-Based on Taxable Admissions: \$105

Average Paid Attendance Per Performance: 1,659

Total Purses Paid: 1988 - 1989 Season \$1,240,326

Seating Capacity: 4,500 - Parking: 4,000 Spaces

Track: Length 1355'/Stretch 673'/Width 23'

Equipment: Autotote, Ltd., Single Inside Lure

SEMINOLE RACING, INC.
d/b/a Daytona Beach Kennel Club
2201 Volusia Avenue
Daytona Beach, Florida 32015

Greyhound Track - Daytona Beach, Florida
204 Racing Days - September 5, 1988 to June 30, 1989 - 305 Performances
56 Racing Days - July 1, 1988 to September 3, 1988 - 83 Performances

OFFICERS

Stephen B. Manion, President
Frank Michels, Vice President/Treasurer

Janice R. Trybus, Secretary

DIRECTORS

Frank Michels
Janice R. Trybus

Stephen B. Manion

Distribution of Handle	
Total Paid to Public	\$ 49,735,118
Total for State	4,394,776
Total for Track/Fronton	<u>8,194,546</u>
Grand Total Handle	<u>\$ 62,324,440</u>
Other State Income - Admission Tax	<u>\$ 82,785</u>

Average Performance: \$160,630
Average Wager Per Capita-Based on Taxable Admissions: \$90
Average Paid Attendance Per Performance: 1,778

Total Purses Paid: 1988 - 1989 Season \$1,913,312
Seating Capacity: 3,100 - Parking: 2,000 Spaces
Track: Length 1320'/Stretch 367'/Width 22'
Equipment: Autotote, Ltd., Alldritt Inside Lure

WASHINGTON COUNTY KENNEL CLUB, INC.

d/b/a Ebro Greyhound Track
Highway 79 & 20, Box 111
Ebro, Florida 32437

Greyhound Track - Ebro, Florida
81 Racing Days - March 29, 1989 to June 30, 1989 - 95 Performances
76 Racing Days - July 1, 1988 to September 27, 1988 - 94 Performances

OFFICERS

Luther F. Hess, President
John M. Hater, Vice President
James P. Hater, Treasurer
Harry L. Hess, Assistant Treasurer
Stockton R. Hess, Assistant Secretary

Robert E. Hater II, Vice President
Paul Dervaes, Vice President
Sidney Summers, Secretary
Craig R. Stevens, Assistant Treasurer

DIRECTORS

John M. Hater
Robert E. Hater II
Stockton R. Hess
Craig R. Stevens
Luther F. Hess

Paul Dervaes
Sidney Summers
Harry L. Hess
James P. Hater

Distribution of Handle	
Total Paid to Public	\$ 16,267,634
Total for State	1,323,562
Total for Track/Fronton	<u>2,806,078</u>
Grand Total Handle	<u>\$ 20,397,274</u>

Other State Income - Admission Tax	<u>\$ 28,568</u>
------------------------------------	------------------

Average Performance: \$107,922
Average Wager Per Capita-Based on Taxable Admissions: \$86
Average Paid Attendance Per Performance: 1,260

Total Purses Paid: 1988 - 1989 Season \$605,943
Seating Capacity: 2,500 - Parking: 750 Spaces
Track: Length 1344'/Stretch 333'/Width 20'
Equipment: Autotote, Ltd., Alldritt Inside Lure

WEST FLAGLER ASSOCIATES, LTD.

401 N.W. 38 Court
Miami, Florida 33126

Greyhound Track - Miami, Florida
49 Racing Days - September 5, 1988 to June 30, 1989 - 73 Performances

OFFICERS

Southwest Florida Ent., Inc., General Partner
Barbara Havenick, General Partner

Isabelle Amdur, General Partner
Florence Hecht, General Partner

Distribution of Handle

Total Paid to Public	\$ 24,237,747
Total for State	2,452,465
Total for Track/Fronton	<u>3,714,626</u>
Grand Total Handle	<u>\$ 30,404,838</u>

Other State Income - Admission Tax \$ 31,051

Average Performance: \$416,505
Average Wager Per Capita-Based on Taxable Admissions: \$130
Average Paid Attendance Per Performance: 3,209

Total Purses Paid: 1988 - 1989 Season \$860,751
Seating Capacity: 13,000 - Parking: 6,700 Spaces
Track: Length 1320'/Stretch 522'/Width 21'
Equipment: Amtote 300 and Amtote VTS

**DANIA JAI-ALAI DIVISION
OF THE ARAGON GROUP, INC.**

301 East Dania Beach Boulevard
Dania, Florida 33004

Jai-Alai - Dania, Florida
110 Playing Days - November 12, 1988 to April 15, 1989 - 159 Performances

OFFICERS

S.F. Snyder, President
O.P. Bell, Sr., Vice President/Secretary

D.R. Knox, Vice President & General Manager
E.S. Chase, Vice President/Comptroller

DIRECTORS

S.F. Snyder
P. LeBoutillier, Jr.

R. Hubsch

Distribution of Handle	
Total Paid to Public	\$ 29,519,365
Total for State	2,633,462
Total for Track/Fronton	<u>4,758,413</u>
Grand Total Handle	<u>\$ 36,911,240</u>

Other State Income - Admission Tax	<u>\$ 53,276</u>
------------------------------------	------------------

Average Performance: \$232,146
Average Wager Per Capita-Based on Taxable Admissions: \$83
Average Paid Attendance Per Performance: 2,792

Players Compensation: 1988 - 1989 Season \$963,007
Seating Capacity: 5,600 - Parking: 2,700 Spaces
Court: Overhead 45' / Length 178' / Width 50'
Equipment: American Totalisator Co., Inc.

FLORIDA JAI-ALAI, INC.
d/b/a Orlando-Seminole Jai-Alai
Post Office Box 107
Fern Park, Florida 32730

Jai-Alai - Fern Park, Florida
114 Playing Days - September 5, 1988 to January 16, 1989 - 169 Performances
56 Playing Days - July 1, 1988 to September 3, 1988 - 83 Performances

OFFICERS

Hort A. Soper, President
Roberta P. Stockham, Secretary

Elizabeth A. Calder, Vice President

DIRECTORS

William Modahl
Elizabeth A. Calder

Hort A. Soper

Distribution of Handle	
Total Paid to Public	\$ 15,519,868
Total for State	1,316,685
Total for Track/Fronton	<u>2,696,653</u>
Grand Total Handle	<u>\$ 19,533,206</u>

Other State Income - Admission Tax	<u>\$ 21,539</u>
------------------------------------	------------------

Average Performance: \$77,513
Average Wager Per Capita-Based on Taxable Admissions: \$91
Average Paid Attendance Per Performance: 855

Players Compensation: 1988 - 1989 Season \$748,008
Seating Capacity: 3,073 - Parking: 1,500 Spaces
Court: Overhead 48'/Length 180'/Width 50'
Equipment: Autotote, Ltd.

FORT PIERCE JAI-ALAI

1750 South Kings Highway
Ft. Pierce, Florida 34945

Jai-Alai - Ft. Pierce, Florida

151 Playing Days - September 5, 1988 to June 30, 1989 - 227 Performances
38 Playing Days - July 1, 1988 to September 3, 1988 - 57 Performances

OFFICERS

Richard P. Donovan, President
Rudy Angulo, Controller

Guillermo J. Diaz, Vice President/General Manager

Distribution of Handle	
Total Paid to Public	\$ 14,405,621
Total for State	666,600
Total for Track/Fronton	<u>3,067,665</u>
Grand Total Handle	<u>\$ 18,139,886</u>
Other State Income - Admission Tax	<u>\$ 27,948</u>

Average Performance: \$63,873
Average Wager Per Capita-Based on Taxable Admissions: \$78
Average Paid Attendance Per Performance: 820

Players Compensation: 1988 - 1989 Season \$942,000
Seating Capacity: 2,420 - Parking: 2,000 Spaces
Court: Overhead 40'/Length 176'/Width 50'
Equipment: Autotote, Ltd.

GOLDEN CROWN CORPORATION

d/b/a Big Bend Jai-Alai
Post Office Box 107
Fern Park, Florida 32730

Jai-Alai - Quincy, Florida
102 Playing Days - January 2, 1989 to June 30, 1989 - 127 Performances
57 Playing Days - October 3, 1988 - December 31, 1988 - 70 Performances

OFFICERS

Hort A. Soper, President
Roberta P. Stockham, Secretary

Elizabeth A. Calder, Vice President

DIRECTORS

William Modahl
Elizabeth A. Calder

Hort A. Soper

Distribution of Handle
Total Paid to Public
Total for State
Total for Track/Fronton
Grand Total Handle

\$ 6,968,342
234,157
1,581,356
\$ 8,783,855

Other State Income - Admission Tax

\$ 11,989

Average Performance: \$44,588
Average Wager Per Capita-Based on Taxable Admissions: \$88
Average Paid Attendance Per Performance: 507

Players Compensation: 1988 - 1989 Season \$813,008
Seating Capacity: 2,100 - Parking: 1,100 Spaces
Court: Overhead 48'/Length 180'/Width 50'
Equipment: Autotote, Ltd.

MIAMI JAI-ALAI
3500 N.W. 37th Avenue
Miami, Florida 33142

Jai-Alai - Miami, Florida
110 Playing Days - November 25, 1988 to April 29, 1989 - 164 Performances

OFFICERS

Richard P. Donovan, President

H. Paul Rico, Vice President

Distribution of Handle

Total Paid to Public	\$ 34,324,240
Total for State	3,049,151
Total for Track/Fronton	<u>5,551,255</u>
Grand Total Handle	<u>\$ 42,924,646</u>

Other State Income - Admission Tax

\$ 67,199

Average Performance: \$261,736

Average Wager Per Capita-Based on Taxable Admissions: \$95

Average Paid Attendance Per Performance: 2,763

Players Compensation: 1988 - 1989 Season \$1,364,993

Seating Capacity: 5,243 - Parking: 3,500 Spaces

Court: Overhead 40' / Length 176' / Width 45'

Equipment: Autotote, Ltd.

OCALA JAI-ALAI
P.O. Box 548
Orange Lake, Florida 32681

Jai-Alai - Orange Lake, Florida
76 Playing Days - September 5, 1988 to June 30, 1989 - 115 Performances
44 Playing Days - July 1, 1988 to September 3, 1988 - 69 Performances

OFFICERS

Richard P. Donovan, President
Thomas J. Contreras, General Manager

Rudy Angulo, Controller
Giles L. Ellis, Vice President

Distribution of Handle

Total Paid to Public	\$ 7,154,275
Total for State	279,336
Total for Track/Fronton	<u>1,580,546</u>
Grand Total Handle	<u>\$ 9,014,157</u>

Other State Income - Admission Tax \$ 14,535

Average Performance: \$48,990
Average Wager Per Capita-Based on Taxable Admissions: \$74
Average Paid Attendance Per Performance: 658

Players Compensation: 1988 - 1989 Season \$808,000
Seating Capacity: 2,002 - Parking: 1,100 Spaces
Court: Overhead 40'/Length 176'/Width 40'
Equipment: Autotote, Ltd.

SPORTS PALACE, INC.

d/b/a Melbourne Jai-Alai

P.O. Box 361257

Melbourne, Florida 32936

Jai-Alai - Melbourne, Florida

131 Playing Days - September 5, 1988 to February 4, 1989 - 193 Performances

48 Playing Days - July 1, 1988 to September 3, 1988 - 72 Performances

OFFICERS

Milton J. Roth, Treasurer/President

Harry J. Olsen, Vice President/Secretary

DIRECTORS

Milton J. Roth

Harry J. Olsen

Frank J. Michels

Clifford R. Kaeser

Distribution of Handle

Total Paid to Public	\$ 7,943,097
Total for State	282,693
Total for Track/Fronton	<u>1,776,171</u>
Grand Total Handle	<u>\$ 10,001,961</u>

Other State Income - Admission Tax

\$ 15,632

Average Performance: \$37,743

Average Wager Per Capita-Based on Taxable Admissions: \$77

Average Paid Attendance Per Performance: 492

Players Compensation: 1988 - 1989 Season \$756,664

Seating Capacity: 2,343 - Parking: 1,700 Spaces

Court: Overhead 48'/Length 176'/Width 50'

Equipment: American Totalisator Co., Inc.

SUMMER JAI-ALAI
3500 N.W. 37th Avenue
Miami, Florida 33142

Jai-Alai - Miami, Florida
38 Playing Days - May 10, 1989 to June 30, 1989 - 56 Performances
68 Playing Days - July 1, 1988 - September 17, 1988 - 103 Performances

OFFICERS

Richard P. Donovan, President

H. Paul Rico, Vice President

Distribution of Handle

Total Paid to Public	\$ 27,444,789
Total for State	2,413,998
Total for Track/Fronton	<u>4,466,196</u>
Grand Total Handle	<u>\$ 34,324,983</u>

Other State Income - Admission Tax	<u>\$ 45,472</u>
------------------------------------	------------------

Average Performance: \$215,880
Average Wager Per Capita-Based on Taxable Admissions: \$97
Average Paid Attendance Per Performance: 2,220

Players Compensation: 1989 - 1989 Season \$1,088,012
Seating Capacity: 5,243 - Parking: 3,500 Spaces
Court: Overhead 40'/Length 176'/Width 45'
Equipment: Autotote, Ltd.

SUMMERSPORT ENTERPRISES, INC.

301 East Dania Beach Boulevard
Dania, Florida 33004

Jai-Alai - Dania, Florida
44 Playing Days - May 2, 1989 to June 30, 1989 - 48 Performances
92 Playing Days - July 1, 1988 to November 11, 1988 - 106 Performances

OFFICERS

S.F. Snyder, President
D.R. Knox, Vice President/General Manager

O.P. Bell, Sr., Vice President/Secretary
F.S. Chase, Vice President/Comptroller

DIRECTORS

The Aragon Group, Inc.

Castleton, Inc.

Distribution of Handle

Total Paid to Public	\$ 27,842,530
Total for State	2,470,448
Total for Track/Fronton	<u>4,565,497</u>
Grand Total Handle	<u>\$ 34,878,475</u>

Other State Income - Admission Tax

\$ 43,244

Average Performance: \$226,484

Average Wager Per Capita-Based on Taxable Admissions: \$97

Average Paid Attendance Per Performance: 2,340

Players Compensation: 1988 - 1989 Season \$1,079,201

Seating Capacity: 5,600 - Parking: 2,700 Spaces

Court: Overhead 45'/Length 178'/Width 50'

Equipment: American Totalisator Co., Inc.

TAMPA JAI-ALAI
5125 South Dale Mabry Highway
Tampa, Florida 33611

Jai-Alai - Tampa, Florida
210 Playing Days - October 7, 1988 to June 30, 1989 - 318 Performances
55 Playing Days - July 6, 1988 to September 7, 1988 - 83 Performances

OFFICERS

Richard P. Donovan, President/Treasurer
Rudy Angulo, Controller

Giles L. Ellis, Jr., Vice President/General Manager

Distribution of Handle	
Total Paid to Public	\$ 44,611,287
Total for State	4,043,271
Total for Track/Fronton	<u>7,487,284</u>
Grand Total Handle	<u>\$ 56,141,842</u>

Other State Income - Admission Tax	<u>\$ 79,717</u>
------------------------------------	------------------

Average Performance: \$140,005
Average Wager Per Capita-Based on Taxable Admissions: \$85
Average Paid Attendance Per Performance: 1,657

Players Compensation: 1988 - 1989 Season \$1,951,626
Seating Capacity: 3,300 - Parking: 3,500 Spaces
Court: Overhead 40'/Length 176'/Width 51'
Equipment: Autotote, Ltd.

THE FRONTON, INC.
d/b/a Palm Beach Jai-Alai
1415 45th Street
West Palm Beach, Florida 33407

Jai-Alai - West Palm Beach, Florida
204~~4~~ Playing Days - September 9, 1988 to June 30, 1989 - 309 Performances
2 Playing Days - July 1, 1988 to July 2, 1988 - 3 Performances

OFFICERS

Arthur W. Silvester, Sr., President
Arthur W. Silvester, Jr., Vice President/Secretary

Renee T. Silvester, Treasurer

DIRECTORS

Arthur W. Silvester, Sr.
Renee T. Silvester

Arthur W. Silvester, Jr.

Distribution of Handle	
Total Paid to Public	\$ 35,603,266
Total for State	3,227,261
Total for Track/Fronton	<u>5,967,811</u>
Grand Total Handle	<u>\$ 44,798,338</u>

Other State Income - Admission Tax	<u>\$ 48,445</u>
------------------------------------	------------------

Average Performance: \$143,584
Average Wager Per Capita-Based on Taxable Admissions: \$92
Average Paid Attendance Per Performance: 1,553

Players Compensation: 1988 - 1989 Season \$1,649,899
Seating Capacity: 5,144 - Parking: 3,000 Spaces
Court: Overhead 50'/Length 170'/Width 55'
Equipment: United Totalisator Co.

VOLUSIA JAI-ALAI, INC.
d/b/a Daytona Beach Jai-Alai
P.O. Box 2630
Daytona Beach, Florida 32115

Jai-Alai - Daytona Beach, Florida
124 Playing Days - February 6, 1989 to June 30, 1989 - 184 Performances

OFFICERS

Milton J. Roth, President/Treasurer

Harry J. Olsen, Vice President/Secretary

DIRECTORS

Milton J. Roth
Frank J. Michels

Harry J. Olsen
Clifford R. Kaesar

Distribution of Handle

Total Paid to Public	\$ 9,684,543
Total for State	423,545
Total for Track/Fronton	<u>2,074,124</u>
Grand Total Handle	<u>\$ 12,182,212</u>

Other State Income - Admission Tax

\$ 21,675

Average Performance: \$66,208

Average Wager Per Capita-Based on Taxable Admissions: \$67

Average Paid Attendance Per Performance: 982

Players Compensation: 1988 - 1989 Season \$1,458,412

Seating Capacity: 4,465 - Parking: 2,079 Spaces

Court: Overhead 48'/Length 176'/Width 50'

Equipment: American Totalisator Co., Inc.

CALDER RACE COURSE, INC.

21001 N.W. 27th Avenue.
Miami, Florida 33055

Thoroughbred Track - Miami, Florida
23 Racing Days - May 29, 1989 to June 30, 1989 - 23 Performances
96 Racing Days - July 1, 1988 to November 9, 1988 - 96 Performances

OFFICERS

Bertram R. Firestone, Chairman of the Board
Kenneth Noe, Jr., President/General Manager
Phillip C. Broughton, Assistant Secretary

Richard Pappalardo, Treasurer
Henry J. Taylor, Jr., Secretary

DIRECTORS

Henry H. Taylor, Jr.
Richard Pappalardo
Bertram R. Firestone
Kenneth Noe, Jr.

Michael Dingman
James H. Thornton
Harry T. Mangurian, Jr.

Distribution of Handle	
Total Paid to Public	\$105,494,898
Total for State	3,397,755
Total for Track/Fronton	25,347,520
Total for Breeder's Association	725,143
Grand Total Handle	<u>\$134,965,316</u>
Other State Income - Admission Tax	<u>\$ 194,892</u>

Average Performance: \$1,134,162
Average Wager Per Capita-Based on Taxable Admissions: \$193
Average Paid Attendance Per Performance: 5,868

Total Purses and Stakes Paid: 1988 - 1989 Season \$14,202,555
Seating Capacity: 13,500 - Parking: 9,500 Spaces
Track: Length 6600'/Stretch 990'/Width 65'
Equipment: Amtote

GULFSTREAM PARK RACING ASSOCIATION, INC.

901 South Federal Highway
Hallandale, Florida 33009

Thoroughbred Track - Hallandale, Florida
50 Racing Days - January 8, 1989 to March 7, 1989 - 50 Performances

OFFICERS

Douglas Donn, President/Chief Executive Officer
Frank J. Pepper, Jr., Vice President
Mary Anna Fowler, Treasurer
Bonnie Jones, Assistant Secretary

Jack Blair, Exec. Vice President/General Mgr.
Donn Flipse, V.P./Assistant Treasurer
Fred Flipse, Secretary

DIRECTORS

Frank J. Pepper, Jr.
Donn Flipse
Bonnie Jones
Arthur I. Appleton
Martha O. Appleton
Douglas Donn

Fred Flipse
Helen D. Flipse
John S. Appleton
James K. Appleton
Jack Blair
Mary Anna Fowler

Distribution of Handle	
Total Paid to Public	\$ 97,357,801
Total for State	3,811,959
Total for Track/Fronton	20,963,362
Total for Breeders' Association	567,148
Grand Total Handle	<u>\$122,700,270</u>

Other State Income - Admission Tax	<u>\$ 159,004</u>
------------------------------------	-------------------

Average Performance: \$2,454,005
Average Wager Per Capita-Based on Taxable Admissions: \$235
Average Paid Attendance Per Performance: 10,449

Total Purses and Stakes Paid: 1988 - 1989 Season \$10,313,925
Seating Capacity: 20,100 - Parking: 15,262 Spaces
Track: Length 5,280'/Stretch 952'/Width 85'
Equipment: Amtote

HIALEAH, INC.
105 East 21 Street
Hialeah, Florida 33010

Thoroughbred Track - Hialeah, Florida
65 Racing Days - March 8, 1989 to May 28, 1989 - 65 Performances

OFFICERS

John J. Brunetti, President/Chairman of the Board
Monroe Bober, Treasurer/Assistant Secretary
D. Thomas Cliburn, Comptroller
Peter F. Gacicia, Director of Racing

John J. Brunetti, Jr., V.P./General Mgr./Secretary
Dennis Testa, General Superintendent
Angelo Testa, Director of Operations

DIRECTORS

John J. Brunetti
Richard E. Gerstein
John J. Brunetti, Jr.
Thomas P. Tatham

Anna G. Brunetti
Harold Snowden
Raul L. Martinez
Merrett R. Stierheim

Distribution of Handle	
Total Paid to Public	\$ 64,815,777
Total for State	2,160,769
Total for Track/Fronton	15,507,429
Total for Breeders' Association	448,414
Grand Total Handle	<u>\$ 82,932,389</u>

Other State Income - Admission Tax \$ 109,728

Average Performance: \$1,275,883
Average Wager Per Capita-Based on Taxable Admissions: \$222
Average Paid Attendance Per Performance: 5,753

Total Purses and Stakes Paid: 1988 - 1989 Season \$8,384,285
Seating Capacity: 33,800 - Parking: 14,000 Spaces
Track: Length 5,940'/Stretch 1,075'/Width 80'
Equipment: Autotote, Ltd.

TAMPA BAY DOWNS, INC.

P.O. Box 2007
Oldsmar, Florida 34677

Thoroughbred Track - Oldsmar, Florida
90 Racing Days - December 9, 1988 to April 9, 1989 - 90 Performances

OFFICERS

Stella F. Thayer, President

Howell Ferguson, Vice President

DIRECTORS

Stella F. Thayer

Howell Ferguson

Distribution of Handle

Total Paid to Public	\$ 32,815,427
Total for State	175,127
Total for Track/Fronton	8,661,370
Total for Breeders' Association	<u>275,628</u>
Grand Total Handle	<u>\$ 41,927,552</u>

Other State Income - Admission Tax

\$ 66,342

Average Performance: \$465,862

Average Wager Per Capita-Based on Taxable Admissions: \$113

Average Paid Attendance Per Performance: 4,120

Total Purses and Stakes Paid: 1988 - 1989 Season \$4,244,350

Seating Capacity: 6,500 - Parking: 5,000 Spaces

Track: Length 5,280'/Stretch 976'/Width 75'

Equipment: American Totalisator Co., Inc.

TROPICAL PARK INC.

21001 N.W. 27 Avenue
Miami, Florida 33110

Thoroughbred Track - Miami, Florida
50 Racing Days - November 11, 1988 to January 7, 1989 - 50 Performances

OFFICERS

Bertram R. Firestone, Chairman of the Board
Kenneth Noe, Jr. President/General Manager
Phillip C. Broughton, Assistant Secretary

Richard Pappalardo, Treasurer
Henry H. Taylor, Jr., Secretary

DIRECTORS

Bertram R. Firestone
John J. Greely, III
Henry H. Taylor, Jr.
Richard Paul Anderson

Fred Berens
Kenneth Noe, Jr.
Jay Weiss

Distribution of Handle

Total Paid to Public	\$ 49,843,493
Total for State	1,661,553
Total for Track/Fronton	11,939,439
Total for Breeders' Association	<u>366,212</u>
Grand Total Handle	<u>\$ 63,810,697</u>

Other State Income - Admission Tax \$ 85,669

Average Performance: \$1,276,214
Average Wager Per Capita-Based on Taxable Admissions: \$210
Average Paid Attendance Per Performance: 6,064

Total Purses and Stakes Paid: 1988 - 1989 Season \$5,475,005
Seating Capacity: 13,500 - Parking: 9,500 Spaces
Track: Length 6,600'/Stretch 990'/Width 65'
Equipment: Amtote

POMPANO PARK ASSOCIATES, LTD. - HARNESS

1800 S.W. Third Street
Pompano Beach, Florida 33069

Harness Track - Pompano Beach, Florida
162 Racing Days - October 1, 1988 to May 6, 1989 - 162 Performances

OFFICERS

John A. Cashman, Jr., President
Michael J. Lang, Secretary/Treasurer/V.P. Finance

Harold S. Duris, General Mgr./Exec. Vice President
Allen J. Finkelson, V.P. of Public Relations

DIRECTORS

John A. Cashman, Jr.
Roy M. Tolleson, Jr.
Mary H. Van Lennep

William E. Simon
William E. Simon, Jr.

Distribution of Handle	
Total Paid to Public	\$ 55,749,960
Total for State	1,137,819
Total for Track/Fronton	14,660,566
Total for Breeders' Association	411,901
Grand Total Handle	<u>\$ 71,960,246</u>

Other State Income - Admission Tax	<u>\$ 141,363</u>
------------------------------------	-------------------

Average Performance: \$444,199
Average Wager Per Capita-Based on Taxable Admissions: \$123
Average Paid Attendance Per Performance: 3,597

Total Purses Paid: 1988 - 1989 Season \$8,319,936
Seating Capacity: 8,279 - Parking: 10,000 Spaces
Track: Length 3,300'/Stretch 608'/Width 80'
Equipment: United Totalisator Co.

POMPANO PARK ASSOCIATES, LTD. - BREEDER'S CROWN

1800 S.W. Third Street
Pompano Beach, Florida 33069

Harness Track - Pompano Beach, Florida
3 Racing Days - November 11, November 12 and November 18, 1988 - 6 Performances

OFFICERS

Harold S. Duris, Executive Vice President/General Mgr. Michael J. Lang, Treasurer/V.P. Finance/Secretary
Allen J. Finkelson, V.P. of Public Relations John A. Cashman, Jr., President

DIRECTORS

John A. Cashman, Jr.
Roy M. Tolleson, Jr.
Mary H. Van Lennep

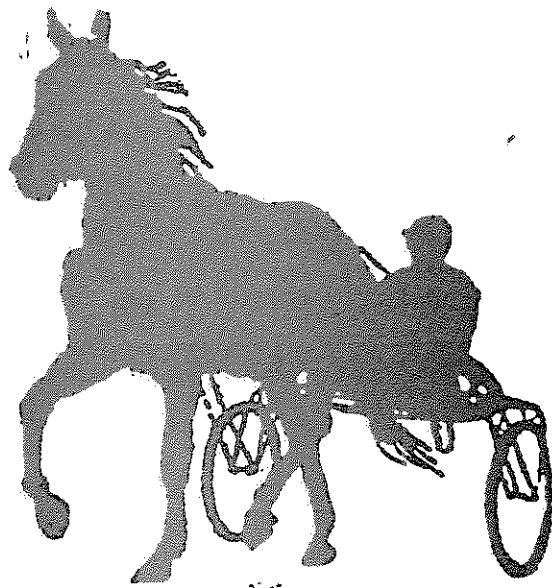
William E. Simon
William E. Simon, Jr.

Distribution of Handle	
Total Paid to Public	\$ 1,705,932
Total for State	3,900
Total for Track/Fronton	459,402
Total for Breeders' Association	13,348
Grand Total Handle	<u>\$ 2,182,582</u>
Other State Income - Admission Tax	<u>\$ 4,710</u>

Average Performance: \$363,764
Average Wager Per Capita-Based on Taxable Admissions: \$59
Average Paid Attendance Per Performance: 6,120

Total Purses Paid 1988 - 1989 Season:
 \$2,181,872 by the Hambletonian Society
 \$217,200 by Pompano Park Associates, Ltd.
Seating Capacity: 8,279 - Parking: 10,000 Spaces
Track: Length 3,300'/Stretch 608'/Width 80'
Equipment: United Totalisator Co.

FINANCIAL SECTION



Stephen R. MacNamara, Secretary
Department of Business Regulation
State of Florida

Pari-Mutuel Wagering Commission
Department of Business Regulation
State of Florida

We have compiled the combined balance sheet of the Division of Pari-Mutuel Wagering, Department of Business Regulation as of June 30, 1989, and the related combined statement of revenues, expenditures and changes in fund balances and additional information (as identified in the table of contents) for the twelve months then ended, in accordance with standards established by the American Institute of Certified Public Accountants.

A compilation is limited to presenting information, in the form of financial statements and additional information, that is the representation of management. We have not audited or reviewed the accompanying financial statements or additional information and, accordingly, do not express an opinion or any other form of assurance on them.

Tallahassee, Florida
October 15, 1989

Purvis, Gray and Company

Certified Public Accountants

P.O. Box 23999 • 222 N.E. 1st Street • Gainesville, Florida 32602 • (904) 378-2461
Laurel Ridge Professional Center • 2347 S.E. 17th Street • Ocala, Florida 32671 • (904) 732-3872
1704 Metropolitan Blvd., Suite 3 • Tallahassee, Florida 32308 • (904) 385-0554

MEMBERS OF AMERICAN AND FLORIDA INSTITUTES OF CERTIFIED PUBLIC ACCOUNTANTS
MEMBER OF AMERICAN INSTITUTE OF CERTIFIED PUBLIC ACCOUNTANTS PRIVATE COMPANIES AND S.E.C. PRACTICE SECTIONS

Department of Business Regulation
Division of Pari-Mutuel Wagering
Combined Balance Sheet - All Fund Types and Account Groups
June 30, 1989
(With Comparative Totals for June 30, 1988)

	Governmental	Fiduciary	Account Groups		Totals	
	Fund Types	Fund Types	General	General	(Memorandum Only)	
	Special	Trust	Fixed	Long-Term	1989	1988
	Revenue	and Agency	Assets	Debt		
Assets						
Cash		\$ 40,334			\$ 40,334	\$ 57,641
Cash in revolving fund	\$ 600				600	600
Cash in depository bank	10,324				10,324	15,055
Cash with State Treasurer	237,086	735,388			972,474	1,245,237
Investments at cost	357,517				357,517	1,032,460
Due from other funds (Inter-divisional)	53,223	11			53,234	24,907
Accounts receivable:						
Revenue	573,384	7,331,967			7,905,351	7,930,720
Interest	4,530				4,530	5,729
Returned checks	650	2,614			3,264	3,171
Fixed assets			\$ 1,516,276		1,516,276	1,019,849
Amount to be provided				\$ 566,541	566,541	207,373
Total Assets	\$ 1,237,314	\$ 8,110,314	\$ 1,516,276	\$ 566,541	\$ 11,430,445	\$ 11,542,742
Liabilities and Fund Equity						
Liabilities:						
Due to other funds (Inter-divisional)	\$ 1,250	\$ 2,434			\$ 3,684	\$ 2,436
Accounts payable	277,343	70,300			347,643	240,043
Due to other state funds:						
General revenue funds	117,743	8,037,093			8,154,836	7,944,287
General revenue - service charge	100				100	1,026,489
Other state agencies	15,768	487			16,255	13,665
Deferred revenue	10,000				10,000	15,000
Notes Payable (Installment Obligations)				377,759	377,759	
Liability for compensated absences				188,782	188,782	207,373
Total Liabilities	422,204	8,110,314		566,541	9,099,059	9,449,293
Fund Equity:						
Investment in general fixed assets			1,516,276		1,516,276	1,019,849
Fund balances:						
Reserved for encumbrances	193,710				193,710	326,355
Unreserved	621,400				621,400	747,245
Total Fund Equity	815,110		1,516,276		2,331,386	2,093,449
Total Liabilities and Fund Equity	\$ 1,237,314	\$ 8,110,314	\$ 1,516,276	\$ 566,541	\$ 11,430,445	\$ 11,542,742

See accountants' compilation report and accompanying notes.

Department of Business Regulation
Division of Pari-Mutuel Wagering
Combined Statement of Revenues, Expenditures and Changes in Fund Balances -
All Governmental Funds - Budget and Actual
For the Fiscal Year Ended June 30, 1989
(With Comparative Totals for June 30, 1988)

	<u>Special Revenue Funds</u>			1988 Actual
	Budget	Actual	Variance Favorable (Unfavorable)	
Revenues:				
Pari-mutuel fees	\$ 7,547,500	\$ 7,392,203	\$ (155,297)	\$ 7,161,878
Fines	32,300	6,425	(25,875)	3,300
Interest	8,200	98,125	89,925	68,285
Prior year refunds	15,000	6,731	(8,269)	25,821
Miscellaneous	<u>123,104</u>	<u>2,102</u>	<u>(121,002)</u>	<u>43,120</u>
Total Revenues	<u>7,726,104</u>	<u>7,505,586</u>	<u>(220,518)</u>	<u>7,302,404</u>
Expenditures:				
Salaries	2,716,848	2,657,483	59,365	2,405,681
Other personal services	2,144,479	1,958,991	185,488	1,659,231
Other operating expenditures	1,091,097	1,044,830	46,267	950,015
Data processing	382,463	382,463		224,360
Refunds	80,000	20,349	59,651	75,041
Service charge to general revenue	502,500	449,362	53,138	431,602
Operating capital outlay	286,997	219,139	67,858	168,563
Certified forward	301,355	278,770	22,585	39,683
Florida Department of Law Enforcement	<u>350,000</u>	<u>266,304</u>	<u>83,696</u>	<u>225,300</u>
Total Expenditures	<u>7,855,739</u>	<u>7,277,691</u>	<u>578,048</u>	<u>6,179,476</u>
Excess revenues over expenditures	<u>(129,635)</u>	<u>227,895</u>	<u>357,530</u>	<u>1,122,928</u>
Other financing sources (uses):				
Transfers in	200,000	200,000		200,000
Transfers out	(1,003,339)	(685,691)	317,648	(525,213)
Remitted to state general revenue unallocated	<u>(1,200,000)</u>	<u> </u>	<u>1,200,000</u>	<u>(790,303)</u>
Total other financing sources (uses)	<u>(2,003,339)</u>	<u>(485,691)</u>	<u>1,517,648</u>	<u>(1,115,516)</u>
Excess (deficiency) of revenues and other sources over expenditures and other uses	<u>(2,132,974)</u>	<u>(257,796)</u>	<u>1,875,178</u>	<u>7,412</u>
Fund balances, beginning	1,073,600	1,073,600		1,066,188
Adjustment to fund balance	<u> </u>	<u>(694)</u>	<u>(694)</u>	<u> </u>
Adjusted beginning fund balances	<u>1,073,600</u>	<u>1,072,906</u>	<u>(694)</u>	<u>1,066,188</u>
Fund balances, ending	<u>\$ (1,059,374)</u>	<u>\$ 815,110</u>	<u>\$ 1,874,484</u>	<u>\$ 1,073,600</u>

See accountants' compilation report and accompanying notes.

Department of Business Regulation
Division of Pari-Mutuel Wagering
Notes to Financial Statements
(See accountants' compilation report)
June 30, 1989

1. Summary of significant accounting policies

Responsibility for both the accuracy of the presented data and the completeness and fairness of the presentation including all disclosures, rests with the Division, except for the financial statements and additional information which are the responsibility of the Finance and Accounting Section of the Department of Business Regulation. The accounting policies of the Division conform to generally accepted accounting principles as applicable to governments. The more significant of the Division's accounting policies follow:

Reporting entity - The Department of Business Regulation is a component unit within the State of Florida reporting entity which consists of the State's legislative agencies; the Governor and Cabinet; the State Departments, commissions, and boards of the executive branch; and the various offices relating to the judicial branch of state government.

The Division of Pari-Mutuel Wagering is a regulatory division of the Department of Business Regulation. It is charged with the supervision of the making of pari-mutuel pools and wagers and their distribution as described under Florida Statutes, sections 550 and 551.

Fund accounting - The Division uses funds and account groups to report on its financial position and the results of its operations. Fund accounting is designed to demonstrate legal compliance and to aid financial management by segregating transactions related to certain government functions or activities.

A fund is a separate accounting entity with a self-balance set of accounts. An account group, on the other hand, is a financial reporting device designed to provide accountability for certain assets and liabilities that are not recorded in the funds because they do not directly affect net expendable available financial resources. The following fund types and account groups are used to record transactions relating to the Division's activities:

Governmental fund types

- Special revenue funds are used to account for the proceeds of specific revenue sources that are legally restricted to expenditures for specified purposes.

Fiduciary fund types

- Agency funds are used to account for assets held by the Division for others. These are custodial in nature (assets equal liabilities) and do not involve measurement of operations.

Account groups

- The general fixed asset account group is used to maintain accounting control for general fixed assets.
- The general long-term debt account group is used to maintain accounting control for long-term obligations of governmental fund types not paid with current resources.

Basis of accounting - Basis of accounting refers to when revenues and expenditures or expenses are recognized in the accounts and reported in the financial statements. Basis of accounting relates to the timing of the measurements made, regardless of the measurement focus applied.

The Division's accounting records for all governmental fund types and agency funds are maintained on the modified accrual basis. Under the modified accrual basis of accounting, revenues are recognized when susceptible to accrual (i.e., when they become both measurable and available). "Measurable" means the amount of the transaction that can be determined and "available" means collectible within the current period or soon enough thereafter to be used to pay liabilities of the current period. Significant revenues considered susceptible to accrual include pari-mutuel fees. Expenditures are recorded when the related fund liability is incurred.

**Department of Business Regulation
Division of Pari-Mutuel Wagering
Notes to Financial Statements
(See accountants' compilation report)
June 30, 1989**

Budgets - The Department follows statutory procedures in the adoption, amendment, and reporting of budgets and budgetary data:

1. Budgets are to be prepared and submitted to the Legislature and the Executive Office of the Governor on a biennial basis in the form and manner prescribed by Chapter 216, Florida Statutes. Prior to June 30, the budget is legally enacted through passage of a law.
2. Budgetary information is integrated into the Department's accounting system. Monthly budget reports are furnished to Division Directors to assure compliance with budgets as authorized by the State Legislature. Allotments of the budget are authorized by the Executive Office of the Governor as a further budgetary control.
3. Limited transfers of expenditure authority may be made by the agency head. Transfers in excess of the limitations established by Section 216.292(2), Florida Statutes, must be approved by the Administration Commission.
4. Pursuant to Chapter 216, Florida Statutes, annual appropriations to the Department are to be used to fund (a) authorized expenditures incurred during the current fiscal year, (b) encumbrances outstanding at year-end approved for liquidation in the subsequent year, and (c) legal, due and unpaid obligations relating to prior year appropriations which have lapsed.

Investments - Investments are stated at historical cost.

Short-term interfund receivables/payables - During the course of operations, numerous transactions occur between individual funds for goods provided or services rendered. These receivables and payables are classified as "due from other funds" on the balance sheet.

Fixed assets - Fixed assets purchased in the governmental fund types are recorded as expenditures (capital outlay) at the time of purchase. Such assets are recorded at cost in the General Fixed Assets Account Group. Depreciation is not recorded in the General Fixed Assets Account Group.

Liability for compensated absences - Employees earn the right to be compensated during absences for vacation and illness. Within the limits established by the law or rule, unused leave benefits will be paid to employees upon separation from state service. A long-term liability for unused vacation and sick leave benefits has been recorded in the General Long-Term Debt Account Group.

Fund equity - Reserves for encumbrances segregate a portion of fund equity committed for a specific future use. In accordance with Florida Statute 550.13, the Pari-Mutuel Wagering Trust Fund does not maintain a fund equity in excess of \$1,000,000. Funds in excess of this amount are transferred to the General Revenue Fund of the State of Florida.

Memorandum Only - Total Columns - Total columns on the general purpose financial statements are captioned "memorandum only" to indicate that they are presented only to facilitate financial analysis. Data in these columns do not present financial position, results of operations or changes in financial position in conformity with generally accepted accounting principles. Neither are such data comparable to a consolidation. Interfund eliminations have not been made in the aggregation of this data.

Comparative data - Comparative total data for the prior year have been presented in the accompanying financial statements in order to provide an understanding of changes in the Division's financial position and operations. However, comparative data have not been presented in all statements because their inclusion would make certain statements unduly complex and difficult to understand.

Department of Business Regulation
Division of Pari-Mutuel Wagering
Notes to Financial Statements
(See accountants' compilation report)
June 30, 1989

2. Cash and Investments

Cash is maintained in the State Treasury. The Public Depository used, the compensating balances and the security requirements are all the responsibility of the State Treasurer. Idle funds of Special Revenue Funds were deposited with the State Treasurer for investment in accordance with Section 215.535, Florida Statutes. Deposits are not recorded as expenditures of the funds. Earnings from investments in excess of service charges made are recorded as revenues of the funds. Investments of money placed with the State Treasurer's Office are made on a pooled basis and the State Treasurer's Office has not identified or reported the market value of these investments as of the date of this report. Management considers all cash and investments to be fully insured.

3. Fixed assets

Changes in general fixed assets during the year are summarized below:

	Balance July 1, 1988	Additions	Retirements	Transfers (To From) Other Funds	Balance June 30, 1989
Automobiles	\$ 69,610		\$ 6,686		\$ 62,924
Office furniture	137,757	\$ 33,634	1,457		169,934
Office equipment	476,691	106,115	7,876		574,930
Laboratory equipment	296,155	358,058			654,213
Books	960	786			1,746
Other equipment	<u>38,676</u>	<u>13,853</u>			<u>52,529</u>
Total general fixed assets	<u>\$ 1,019,849</u>	<u>\$ 512,446</u>	<u>\$ 16,019</u>		<u>\$ 1,516,276</u>

4. General Long-Term Debt

Changes in general long-term debt during the year are summarized below:

	Balance July 1, 1988	Additions	Retirements	Balance June 30, 1989
Installment purchase obligations Collateralized by equipment	\$ 0	\$ 403,552	\$ 25,793	\$ 377,759
Compensated Absences	<u>207,373</u>	<u>0</u>	<u>18,591</u>	<u>188,782</u>
Total general long-term debt	<u>\$ 207,373</u>	<u>\$ 403,552</u>	<u>\$ 44,384</u>	<u>\$ 566,541</u>

The installment purchase obligations consist of two obligations as follows:

<u>Original Balance</u>	<u>Payment Terms</u>	<u>Balance at June 30, 1989</u>
\$358,058	\$22,104 Quarterly Which Includes 6.6%	\$339,249
\$ 45,494	\$ 4,204 Quarterly Which Includes 6.51%	\$ 38,510

The interest paid on the installment obligations totalled \$6,644, all of which has been charged as an expenditure. The principal requirements for the five succeeding fiscal years ended, June 30 are as follows: 1990 - \$82,181; 1991 - \$87,725; 1992 - \$85,163; 1993 - \$82,159; 1994 - \$40,531.

The \$45,494 installment obligation was incurred to acquire four copiers, only one of which is recorded as an asset in the Division of Pari-Mutuel Wagering's general fixed assets. The other copiers are recorded as assets in other divisions of the Department of Business Regulation. Since the Division of Pari-Mutuel Wagering is primarily responsible for the repayment of the obligation, the total debt is carried in this Division's general long-term debt.

**Department of Business Regulation
Division of Pari-Mutuel Wagering
Notes to Financial Statements
(See accountants' compilation report)
June 30, 1989**

5. Tax collections

Tax collections received by the Division are recorded using fund accounting and allocated between the Tax Collection Trust Fund and the General Revenue Agency Fund in accordance with Florida Statutes. Activity occurring within the General Revenue Agency and Tax Collection Trust Fund during the current fiscal year is as follows:

	General Revenue Agency Fund	Tax Collection Trust Fund	Total
Taxes			
Taxes on Handle	\$ 48,078,985	\$ 48,078,984	\$ 96,157,969
Breaks	1,458,977	1,458,977	2,917,954
Attendance	1,183,336	1,183,336	2,366,672
Surtax	<u>4,888,147</u>	<u>4,888,147</u>	<u>4,888,147</u>
	55,609,445	50,721,297	106,330,742
Registration Fees		76,277	76,277
Licenses		821,712	821,712
Fines	14,600		14,600
Miscellaneous	<u>836</u>	<u>198</u>	<u>1,034</u>
	<u>\$ 55,624,881</u>	<u>\$ 51,619,484</u>	<u>\$ 107,244,365</u>

6. Fines

In accordance with Florida Statute 550.241, it is a violation for a person to administer or cause to be administered any drug, medication, stimulant, depressant or other type of drug-masking agent to an animal which will result in a positive test for such substance taken immediately prior to or subsequent to the racing of that animal. Rules have been promulgated which identify specific instances where the statute should be implemented. They have been adopted by the Division and enforced by the Bureau of Investigations. The schedule below is representative of total drug fines collected and deposited into the Racing Research Fund for the fiscal year ended June 30, 1989.

Broward County	\$ 150
Dade County	4,600
Duval County	350
Hillsborough County	300
Lee County	150
Pinellas County	25
Santa Rosa County	350
Seminole County	300
Volusia County	<u>200</u>
	<u>\$ 6,425</u>

7. Tax collections distributed by county

In accordance with Florida Statutes, \$29,915,500 of the Tax Collection Trust Fund is distributed in equal parts to each of Florida's 67 counties, with any excess of such monies after the distribution to be paid to the General Revenue Fund. If the sum available for distribution in the Tax Collection Trust Fund is less than \$29,915,500, the deficiency shall be paid to the Tax Collection Trust Fund from the General Revenue Fund.

The following is the distribution to counties for the year ended June 30, 1989, as reported by the Department of Banking and Finance, Bureau of Local Government Finance.

State of Florida
Disbursements of Pari-Mutuel Wagering to Counties
For The Fiscal Year Ended June 30, 1989

Counties	Board of County Commissioners	School Board	Hospital	Other	Totals
Alachua	\$ 446,500				\$ 446,500
Baker	156,000	\$ 255,500	\$ 25,000	\$ 10,000	446,500
Bay	446,500				446,500
Bradford	223,250	223,250			446,500
Brevard	446,500				446,500
Broward		446,500			446,500
Calhoun	230,750	215,750			446,500
Charlotte	297,667	148,833			446,500
Citrus	223,250	223,250			446,500
Clay	223,250	223,250			446,500
Collier	446,500				446,500
Columbia	223,250	223,250			446,500
Dade	446,500				446,500
Desoto	314,333	132,167			446,500
Dixie	223,250	223,250			446,500
Duval		446,500			446,500
Escambia		446,500			446,500
Flagler	223,250	223,250			446,500
Franklin	140,500	306,000			446,500
Gadsden	223,250	223,250			446,500
Gilchrist	204,247	202,248		40,005	446,500
Glades	223,250	223,250			446,500
Gulf	216,500	230,000			446,500
Hamilton	223,250	223,250			446,500
Hardee	446,500				446,500
Hendry	218,025	143,300	85,175		446,500
Hernando	236,750	209,750			446,500
Highlands	223,250	223,250			446,500
Hillsborough	446,500				446,500
Holmes	237,250	209,250			446,500
Indian River	446,500				446,500
Jackson	57,000	371,500	18,000		446,500
Jefferson	223,250	223,250			446,500
Lafayette	220,150	210,150		16,200	446,500
Lake	297,667	148,833			446,500
Lec	223,250	223,250			446,500
Leon	446,500				446,500
Levy		446,500			446,500
Liberty	198,250	248,250			446,500
Madison	217,000	217,000	12,500		446,500
Manatee	446,500				446,500
Marion	446,500				446,500
Martin	223,250	223,250			446,500
Monroe	223,250	223,250			446,500
Nassau	198,250	198,250		50,000	446,500
Okaloosa	446,500				446,500
Okeechobee	223,250	223,250			446,500
Orange	446,500				446,500
Osceola	223,250	223,250			446,500
Palm Beach	446,500				446,500
Pasco	223,250	223,250			446,500
Pinellas	223,250	223,250			446,500
Polk	446,500				446,500
Putnam	446,500				446,500
St. Johns	239,750	206,750			446,500
St. Lucie	200,925	223,250		22,325	446,500
Santa Rosa	223,250	223,250			446,500
Sarasota		446,500			446,500
Seminole		386,500		60,000	446,500
Sumter	223,250	223,250			446,500
Suwannee	233,250	213,250			446,500
Taylor	223,250	223,250			446,500
Union	223,250	223,250			446,500
Volusia	132,500	314,000			446,500
Wakulla	446,500				446,500
Walton	224,000	222,500			446,500
Washington	207,850	223,250	12,000	3,400	446,500
TOTAL	\$ 17,180,614	\$ 12,380,281	\$ 152,675	\$ 201,930	\$ 29,915,500

**Department of Business Regulation
Division of Pari-Mutuel Wagering
Notes to Financial Statements
(See accountants' compilation report)
June 30, 1989**

8. Collections for other state agencies

Total pari-mutuel collections generated is comprised of revenue recognized by the Division for its operations and collections made on behalf of state agencies. Amounts collected and remitted to these other agencies during the current fiscal year is noted below:

From Escheated Pari-Mutuel Tickets for Principal State School Fund (DEPARTMENT OF EDUCATION):

Associated Outdoor Clubs, Inc.	\$ 209,553	
Bayard Raceways, Inc.	133,814	
Berenson Pari-Mutuel, Inc.	31,713	
Biscayne Kennel Club, Inc.	152,620	
Bonita Ft. Myers Corporation	154,740	
Investment Corp. of Palm Beach	410	
Investment Corp. of South Florida	181,887	
Jacksonville Kennel Club, Inc.	124,451	
Jefferson County Kennel Club, Inc.	54,135	
Orange Park Kennel Club, Inc.	151,573	
Pensacola Greyhound Track, Inc.	100,746	
St. Petersburg Kennel Club, Inc.	283,646	
Sanford Orlando Kennel Club, Inc.	69	
Sarasota Kennel Club, Inc.	137,678	
Seminole Greyhound Park, Inc.	138,880	
Seminole Racing, Inc. d/b/a Daytona Beach Kennel Club, Inc.	112,460	
Washington County Kennel Club, Inc.	79,417	
West Flagler Associates, Ltd.	136,767	
Dania Jai-Alai Division	169,744	
Florida Jai-Alai	144,661	
Fort Pierce Jai-Alai	96,417	
Golden Crown Corporation	76,142	
Miami Jai-Alai	194,282	
Ocala Jai-Alai	81,417	
Sports Palace, Inc.	72,494	
Summer Jai-Alai	150,124	
Summersport Enterprises, Ltd.	148,852	
Tampa Jai-Alai	237,482	
The Fronton, Inc.	100	
Volusia Jai-Alai	<u>171,277</u>	\$ 3,727,551

From Extra Days of Racing for Board of Regents - Scholarship Fund (STATE BOARD OF REGENTS):

Berenson Pari-Mutuel, Inc.	287	
Ft. Pierce Jai-Alai	301	
Investment Corp. of Palm Beach	22,225	
Pensacola Greyhound Track, Inc.	1,563	
Pompano Park Associates, Ltd. - Harness	12,286	
Sarasota Kennel Club, Inc.	25,126	
Washington County Kennel, Inc.	<u>120</u>	61,908

Collections for Quarter Horse Promotion Trust Fund (DEPARTMENT OF AGRICULTURE):

Florida Appaloosa Racing Promotion Fund	24,464	
Florida Arabian Horse Racing Promotion Fund	<u>819</u>	<u>25,283</u>
		<u>\$ 3,814,742</u>

9. Retirement Plans

Pursuant to law, all officers and salaried employees with minor exceptions are members of defined retirement plans administered by the Department of Administration, Division of Retirement. The retirement plans of the State of Florida consist of both contributory and noncontributory benefit plans. The plans provide for retirement, death, and disability benefits and require contributions by employees and/or participating agencies at stated percentages of compensation set by law as determined by the State Legislature. The other disclosures required by Statement No. 5 of the Governmental Accounting Standards Board regarding the disclosure of pension information, are not considered to be material in relation to the accompanying financial statements.

ADDITIONAL INFORMATION

Department of Business Regulation
Division of Pari-Mutuel Wagering
Combining Balance Sheet
Special Revenue Funds
For the Fiscal Year Ended June 30, 1989
(With Comparative Totals for June 30, 1988)

	Pari-Mutuel Wagering Trust Fund	Racing Research Trust Fund	Totals (Memorandum Only)	
			1989	1988
Assets				
Cash			\$	4,624
Cash in revolving fund	\$ 600		\$ 600	600
Cash in depository bank	10,324		10,324	15,055
Cash with State Treasurer	236,295	\$ 791	237,086	512,220
Investments at cost	325,702	31,815	357,517	1,032,460
Due from other funds (Interdivisional)	53,223		53,223	24,847
Accounts receivable:				
Revenue	573,384		573,384	575,931
Interest	4,292	238	4,530	5,729
Employees				
Returned checks	650		650	1,092
Total Assets	<u>\$ 1,204,470</u>	<u>\$ 32,844</u>	<u>\$ 1,237,314</u>	<u>\$ 2,172,558</u>
Liabilities and Fund Balances				
Liabilities:				
Due to other funds (Interdivisional)	\$ 1,250		\$ 1,250	\$ 961
Accounts Payable	277,343		277,343	169,718
Due to other state funds:				
General revenue fund	117,743		117,743	790,303
General revenue - service charge		\$ 100	100	109,786
Other state agencies	15,768		15,768	13,190
Deferred revenue	10,000		10,000	15,000
Total Liabilities	<u>422,104</u>	<u>100</u>	<u>422,204</u>	<u>1,098,958</u>
Fund balances:				
Reserved for encumbrances	193,710		193,710	326,355
Unreserved	588,656	32,744	621,400	747,245
Total Fund Balances	<u>782,366</u>	<u>32,744</u>	<u>815,110</u>	<u>1,073,600</u>
Total Liabilities and Fund Balances	<u>\$ 1,204,470</u>	<u>\$ 32,844</u>	<u>\$ 1,237,314</u>	<u>\$ 2,172,558</u>

See accountants' compilation report.

Department of Business Regulation
 Division of Pari-Mutuel Wagering
 Combining Statement of Revenues, Expenditures and Changes in Fund Balances - Budget and Actual
 For the Fiscal Year Ended June 30, 1989
 (With Comparative Totals for June 30, 1988)

	Pari-Mutuel Wagering Trust Fund			Racing Research Trust Fund			Totals		
	Budget	Actual	Variance Favorable (Unfavorable) 1988	Budget	Actual	Variance Favorable (Unfavorable) 1988	Budget	Actual	Variance Favorable (Unfavorable) 1988
Revenues:									
Pari-mutuel fees	\$ 7,547,500	\$ 7,392,203	\$ (155,297)	\$ 32,300	\$ 6,425	\$ (25,875)	\$ 7,547,500	\$ 7,392,203	\$ (155,297)
Fines		94,824	94,824	8,200	3,301	(4,899)	32,300	6,425	(25,875)
Interest	15,000	6,731	(8,269)				8,200	98,125	89,925
Prior year refunds	123,104	2,102	(121,002)				15,000	6,731	(8,269)
Miscellaneous	7,685,604	7,495,860	(189,744)	40,500	9,726	(30,774)	123,104	2,102	(121,002)
Total revenues	7,685,604	7,495,860	(189,744)	40,500	9,726	(30,774)	7,726,104	7,505,586	(220,518)
Expenditures:									
Salaries	2,716,848	2,657,483	59,365				2,716,848	2,657,483	59,365
Other personal services	2,094,479	1,908,991	185,488	50,000	50,000		2,144,479	1,958,991	185,488
Other operating expenditures	1,091,097	1,044,830	46,267				1,091,097	1,044,830	46,267
Data processing	382,463	382,463					382,463	382,463	
Refunds	80,000	20,349	59,651				80,000	20,349	59,651
Service charge to general revenue	500,000	448,780	51,220	2,500	582	1,918	502,500	449,362	53,138
Operating capital outlay	286,997	219,139	67,858				286,997	219,139	67,858
Certified forward	301,355	278,770	22,585				301,355	278,770	22,585
Florida Department of Law Enforcement	350,000	266,304	83,696				350,000	266,304	83,696
Total expenditures	7,803,239	7,227,109	576,130	52,500	50,582	1,918	7,855,739	7,277,691	578,048
Excess (deficiency) revenues over expenditures	(117,635)	268,751	386,386	(12,000)	(40,856)	(28,856)	(129,635)	227,895	357,530
Other financing sources (uses):									
Transfers in	200,000	200,000					200,000	200,000	
Transfers out	(1,003,339)	(685,691)	317,648				(1,003,339)	(685,691)	317,648
Remitted to state general revenue unallocated	(1,200,000)		1,200,000				(1,200,000)		1,200,000
Total other financing sources (uses)	(2,003,339)	(485,691)	1,517,648				(2,003,339)	(485,691)	1,517,648
Excess (deficiency) revenues and other sources over expenditures and other uses	(2,120,974)	(216,940)	1,904,034	(12,000)	(40,856)	(28,856)	(2,132,974)	(257,796)	1,875,178
Fund Balances, beginning	1,000,000	1,000,000		73,600	73,600		1,073,600	1,073,600	
Adjustment to fund balance		(694)	(694)					(694)	(694)
Adjusted beginning fund balances	1,000,000	999,306	(694)	73,600	73,600		1,073,600	1,072,906	(694)
Fund balances, ending	(1,120,974)	782,366	1,903,340	61,600	32,744	(28,856)	(1,059,374)	815,110	1,874,484

See accountants' compilation report.

**Department of Business Regulation
 Division of Pari-Mutuel Wagering
 Combining Balance Sheet
 Fiduciary Funds - Trust and Agency
 For the Fiscal Year Ended June 30, 1989
 (With Comparative Totals for June 30, 1988)**

	Tax Collection Trust Fund	General Revenue Agency Fund	Collections for Other State Agencies Agency Fund	Totals (Memorandum Only)	
				1989	1988
Assets					
Cash	\$ 40,334			\$ 40,334	\$ 53,017
Cash with State Treasurer	735,388			735,388	733,017
Due from other funds (Interdivisional)	11			11	60
Accounts receivable:					
Revenue	3,454,353	\$ 3,877,127	\$ 487	7,331,967	7,354,789
Returned checks	<u>2,514</u>	<u>100</u>		<u>2,614</u>	<u>2,079</u>
Total assets	<u>\$ 4,232,600</u>	<u>\$ 3,877,227</u>	<u>\$ 487</u>	<u>\$ 8,110,314</u>	<u>\$ 8,142,962</u>
 Liabilities and Fund Balances					
Liabilities:					
Due to other funds (Interdivisional)	\$ 2,434			\$ 2,434	\$ 1,475
Accounts payable	70,300			70,300	70,325
Due to other state funds:					
General revenue fund	4,159,866	\$ 3,877,227		8,037,093	7,153,984
General revenue - service charge			\$ 487	487	916,703
Other state agencies					475
Total liabilities	<u>4,232,600</u>	<u>3,877,227</u>	<u>487</u>	<u>8,110,314</u>	<u>8,142,962</u>
Fund balances					
Total liabilities and fund balances	<u>\$ 4,232,600</u>	<u>\$ 3,877,227</u>	<u>\$ 487</u>	<u>\$ 8,110,314</u>	<u>\$ 8,142,962</u>

See accountants' compilation report.

Department of Business Regulation
Division of Pari-Mutuel Wagering
Fiduciary Fund - Collection for Other State Agencies
Schedule of Collections and Distributions - Estimated and Actual
For the Fiscal Year Ended June 30, 1989
(With Comparative Totals for June 30, 1988)

	Estimated	Actual	Variance Favorable (Unfavorable)	1988 Actual
Collections:				
Taxes (Note 8)	\$ <u>3,490,000</u>	\$ <u>3,814,742</u>	\$ <u>324,742</u>	\$ <u>3,272,422</u>
Total Collections	\$ <u>3,490,000</u>	\$ <u>3,814,742</u>	\$ <u>324,742</u>	\$ <u>3,272,422</u>
Distributions:				
Deposits to Other State Agencies:				
Department of Agriculture	\$ 22,165	\$ 25,283	\$ (3,118)	\$ 22,055
Board of Regents	90,181	61,908	28,273	89,732
Department of Education	<u>3,377,654</u>	<u>3,727,551</u>	<u>(349,897)</u>	<u>3,160,635</u>
Total Distributions	\$ <u>3,490,000</u>	\$ <u>3,814,742</u>	\$ <u>(324,742)</u>	\$ <u>3,272,422</u>

See accountants' compilation report.

**Department of Business Regulation
Division of Pari-Mutuel Wagering
Fiduciary Fund - Tax Collection Trust Fund
Schedule of Collections and Distributions - Estimated and Actual
For the Fiscal Year Ended June 30, 1989
(With Comparative Totals for June 30, 1988)**

	Estimated	Actual	Variance Favorable (Unfavorable)	1988 Actual
Collections:				
Taxes (Note 5)	\$ 57,874,100	\$ 50,721,297	\$ (7,152,803)	\$ 56,548,337
Licenses (Note 5)	908,200	821,712	(86,488)	896,519
Fees (Note 5)	55,900	76,277	20,377	54,967
Miscellaneous (Note 5)	<u>1,430</u>	<u>198</u>	<u>(1,232)</u>	<u>1,680</u>
Tax Collections	<u>\$ 58,839,630</u>	<u>\$ 51,619,484</u>	<u>\$ (7,220,146)</u>	<u>\$ 57,501,503</u>
Distributions:				
Refunds	\$ 15,000	\$ 10,644	\$ 4,356	\$ 9,199
Transfers to General Revenue	34,000,000	18,395,588	15,604,412	23,899,151
Aid to Counties (Note 7)	29,915,500	29,915,500		29,915,500
Service Charge to General Revenue	4,000,000	3,097,752	902,248	3,477,653
Transfer to Pari-Mutuel Wagering Trust Fund	<u>200,000</u>	<u>200,000</u>	<u> </u>	<u>200,000</u>
Total Distributions	<u>\$ 68,130,500</u>	<u>\$ 51,619,484</u>	<u>\$ 16,511,016</u>	<u>\$ 57,501,503</u>

See accountants' compilation report.

Department of Business Regulation
Division of Pari-Mutuel Wagering
Fiduciary Fund - General Revenue Agency Fund
Schedule of Collections and Distributions - Estimated and Actual
For the Fiscal Year Ended June 30, 1989
(With Comparative Totals for June 30, 1988)

	Estimated	Actual	Variance Favorable (Unfavorable)	1988 Actual
Collections:				
Taxes (Note 5)	\$ 54,988,000	\$ 55,609,445	\$ 621,445	\$ 62,027,529
Fines (Note 5)	12,000	14,600	2,600	12,050
Miscellaneous (Note 5)	<u> </u>	<u> 836</u>	<u> 836</u>	<u> </u>
Total Collections	<u>\$ 55,000,000</u>	<u>\$ 55,624,881</u>	<u>\$ 624,881</u>	<u>\$ 62,039,579</u>
 Distributions:				
Transfers to General Revenue	<u>\$ 55,000,000</u>	<u>\$ 55,624,881</u>	<u>\$ 624,881</u>	<u>\$ 62,039,579</u>
Total Distributions	<u>\$ 55,000,000</u>	<u>\$ 55,624,881</u>	<u>\$ 624,881</u>	<u>\$ 62,039,579</u>

See accountants' compilation report.

TAX STRUCTURE

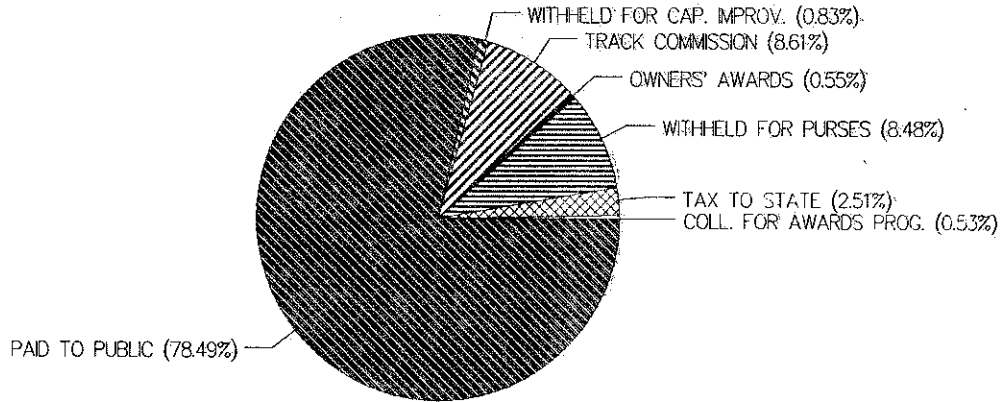


TAX STRUCTURE

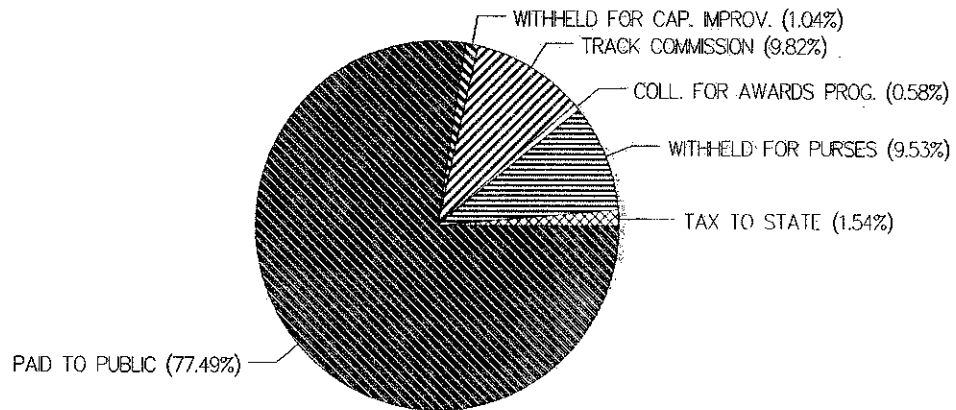
Florida's Tax Structure is based upon total dollars wagered (handle), and is different for each industry based upon the needs which are particular to that sport. The amount withheld, or takeout, is divided into two basic groups: state tax, and track/fronton share, which includes restricted revenues such as capital improvement, purses and owners' awards. The remainder of the pools are returned to the public as winnings. Different tax rates apply to regular wagers, doubles and triples, and exotic wagers. Optional take-outs are marked accordingly. Breaks are paid to the promotional trust fund in Arabian and Appaloosa racing, the breeders' associations in standardbred, thoroughbred and quarter horse racing, and to the state in greyhound racing and jai-alai. Abandoned winning tickets are also paid to the breeders' associations in horse racing. In greyhound and jai-alai they escheat to the state for the State School Fund. An admission tax of the greater of 15% or 10 cents per person is paid to the state. Finally, a daily license fee of \$50, \$80 or \$100 per race/game is paid by all permitholders.

BREAKDOWN OF BETTING DOLLAR

THOROUGHBRED RACING

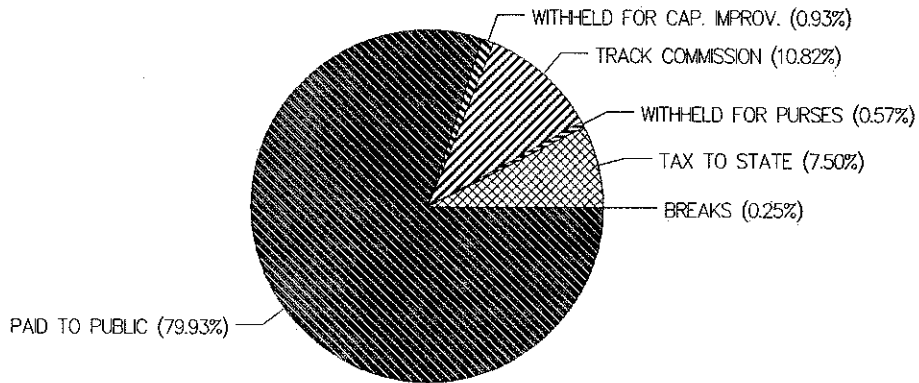


HARNESS RACING

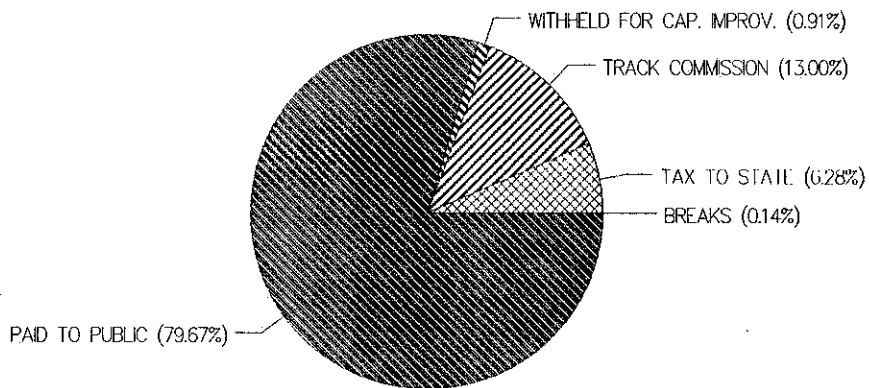


BREAKDOWN OF BETTING DOLLAR
(Continued)

GREYHOUND RACING



JAI-ALAI



Greyhound Racing *

Type of Pari-Mutuel Wagering Pool	Greyhound Racing Basic Tax Structure			Optional for Capital Improvement		Optional for Additional Capital Improvement			Maximum Authorized Takeout					
	Takeout	Add'l Purse	State Tax	Profit and Expense	Takeout	Capital Improv.	Takeout	Capital Improv.	State Surtax	Takeout	Add'l Purse	Capital Improv.	State Tax	Profit and Expense
Regular: Win Place, Show	17.6	--	7.6% of handle in excess of \$25,000 each	Balance of takeout after taxes and purses	--	--	--	--	--	17.6	--	--	7.6% of handle over \$25,000 plus 0.5% of exotics for additional capital improv.	Balance of takeout after taxes, purses and capital improv.
Doubles: Daily Double Quinella Perfecta Big Q	18.0	--	performance except as shown below		--	0.5	1.0	0.5	0.5	19.0	--	0.5		
Triples: Trifecta	18.0	1.0			1.0	1.0	1.0	0.5	0.5	21.0	1.0	1.5		
Other Exotics	18.0	--			1.0	1.0	1.0	0.5	0.5	20.0	--	1.5		

In addition to the above, each permitholder is required to pay a daily license fee of \$80 per race unless the average handle per performance for the preceding racing season was under \$100,000 in which case the daily license fee is \$50 per race.

Each permitholder is also required to pay a tax equal to the breaks.

An admission tax of 15% of the entrance gate admission charge or 10 cents, whichever is greater, is imposed on each person attending a dog race. The permitholder is responsible for the collection of the admission tax.

The uncashed tickets escheat to the state after one year.

PURSUANT TO CHAPTER 87-38 LAWS OF FLORIDA

State Tax on Handle: Tax on handle for dog tracks that equaled or exceeded \$30 million in handle for the preceding racing season is 7.6% of the handle in excess of \$25,000 for each performance. Tax on handle for tracks that equaled or exceeded \$15 million but fell below \$30 million in handle for the preceding racing season is 7.6% of the handle in excess of \$40,000 for each performance. Tax on handle for tracks that fell below \$15 million in handle for the preceding racing season is 7.6% of the handle in excess of \$50,000 for each performance.

* This tax structure was effective for the fiscal year July 1, 1988 to June 30, 1989.

Greyhound Racing -- Tax Structure Effective July 1, 1989

Type of Pari-Mutuel Wagering Pool	Greyhound Racing Basic Tax Structure			Optional for Capital Improvement		Optional for Additional Capital Improvement			Optional for Additional Purses				Maximum Authorized Takeout				Profit & Expense
	Takeout	Add'l Purse	State Tax	Takeout	Capital Improv.	Takeout	Capital Improv.	State Surtax	Takeout	Add'l Purses	Permit-holder	State Surtax	Takeout	Capital Improv.	Add'l Purses	State Tax	
Regular: Win Place & Show	17.6	---	7.6% of handle in excess of \$ 25,000 each performance except as shown below	---	---	---	---	---	---	---	---	---	17.6	---	---	7.6% of handle over \$ 25,000 each performance plus surtax on applicable exotics for capital improv. and add'l purses	Balance of takeout after taxes and purses
Doubles: Daily Double Quinella Perfecta Big Q Pick 3	18.0	---		1.0	0.5	1.0	0.5	0.5	2.0	0.825	0.35	0.175	20.0	0.5	0.825		
Triples: Trifecta Superfecta Tri-Super	18.0	1.0		1.0	0.5	1.0	0.5	0.5	2.0	0.825	0.35	0.175	22.0	1.5	1.825		
Other Exotics: Pick (N)	18.0	---		1.0	1.0	1.0	0.5	0.5	2.0	0.825	0.35	0.175	21.0	1.5	1.65		

In addition to the above, each permitholder is required to pay a daily license fee of \$80 per race unless the average handle per performance for the preceding racing season was under \$100,000 in which case the daily license fee is \$50 per race.

Each permitholder is also required to pay a tax equal to the breaks.

An admission tax of 15% of the entrance gate admission charge or 10 cents, whichever is greater, is imposed on each person attending a dog race. The permitholder is responsible for the collection of the admission tax.

The uncashed tickets escheat to the state after one year.

Should a permitholder elect to withhold funds for additional purses without withholding funds for additional capital improvements, the first percent withheld for additional purses is subject to a 50% surtax. The second percent withheld is subject to a 17.5% surtax.

A permitholder may also elect to allocate the additional capital improvement fund withholdings as additional purses.

PURSUANT TO CHAPTER 87-38 LAWS OF FLORIDA

State Tax on Handle: Tax on handle for dog tracks that equaled or exceeded \$30 million in handle for the preceding racing season is 7.6% of the handle in excess of \$25,000 for each performance. Tax on handle for tracks that equaled or exceeded \$15 million in handle for the preceding racing season is 7.6% of the handle in excess of \$40,000 for each performance. Tax on handle for tracks that fell below \$15 million in handle for the preceding racing season is 7.6% of the handle in excess of \$50,000 for each performance.

Jai-Alai *

Type of Pari-Mutuel Pool	Jai-Alai Basic Tax Structure			Optional for Capital Improvement		Optional for Additional Capital Improvement			Maximum Authorized Takeout			
	Takeout	State Tax	Profit and Expense	Takeout	Capital Improv.	Takeout	Capital Improv.	State Surtax	Takeout	Capital Improv.	State Tax	Profit and Expense
Regular: Win, Place, Show	17.6	7.1% of handle in excess of \$ 25,000 each performance except as shown below	Balance of takeout after taxes	--	--	--	--	--	17.6		7.1% of handle over \$ 25,000 plus surtax of 0.5% of exotics for additional capital improv. if withheld	Balance of takeout after taxes and capital improv.
Doubles: Daily Double Quinella Perfecta Big Q	19.0			--	--	1.0	0.5	0.5	20.0	0.5		
Trifecta and Other Exotics	19.0			1.0	1.0	1.0	0.5	0.5	21.0	1.5		

In addition to the above, each permitholder is required to pay a daily license fee of \$80 per game unless the average handle per performance for the preceding racing season was under \$100,000 in which case the daily license fee is \$50 per game.

Each permitholder is also required to pay a tax equal to the breaks.

An admission tax of 15% of the entrance gate admission charge or 10 cents, whichever is greater, is imposed on each person attending a jai-alai fronton. The permitholder is responsible for the collection of the admission tax.

The uncashed tickets escheat to the state after one year.

PURSUANT TO CHAPTER 87-38 LAWS OF FLORIDA

State Tax on Handle: Tax on handle for jai-alai frontons that equaled or exceeded \$30 million in handle for the preceding racing season is 7.1% of the handle in excess of \$25,000 for each performance. Tax on handle for frontons that equaled or exceeded \$15 million but fell below \$30 million in handle for the preceding racing season is 7.1% of the handle in excess of \$40,000 for each performance. Tax on handle for frontons that fell below \$15 million in handle for the preceding racing season is 7.1% of the handle in excess of \$50,000 for each performance.

* This tax structure was effective for the fiscal year July 1, 1988 to June 30, 1989.

Jai Alai - Tax Structure Effective July 1, 1989

Type of Wagering Pool	Jai-Alai Basic Tax Structure		Optional for Capital Improvement		Optional for Additional Capital Improvement		Optional for Additional Withholdings			Maximum Authorized Takeout				
	Takeout	State Tax	Takeout	Capital Improv.	Takeout	State Surtax	Takeout	Permit-holder	State Surtax	Takeout	Capital Improv.	Permit-holder	State Tax	Profit and Expense
Regular: Win, Place, Show	17.6	7.1% of handle in excess of \$ 25,000 each performance except as shown below	---	---	---	---	---	---	---	17.6	---	---	7.1% of handle over \$ 25,000 each performance plus applicable exotics for capital improv. and add'l withholdings	Balance of takeout after taxes and capital improv.
Doubles: Daily Double Quinella Perfecta Big Q Pick 3					1.0	0.5	1.0	0.825	0.175	21.0	0.5	0.825		
Triples & Other Exotics: Trifecta Superfecta Tri-Super Pick (N)	19.0		---	---	1.0	0.5	1.0	0.825	0.175	22.0	0.5	1.65		
	19.0		1.0	1.0	0.5	0.5	2.0	1.65	0.35	23.0	1.5	1.65		

In addition to the above, each permitholder is required to pay a daily license fee of \$80 per game unless the average handle per performance for the preceding racing season was under \$100,000 in which case the daily license fee is \$50 per game.

Each permitholder is also required to pay a tax equal to the breaks.

An admission tax of 15% of the entrance gate admission charge or 10 cents, whichever is greater, is imposed on each person attending a jai-alai fronton. The permitholder is responsible for the collection of the admission tax.

The uncashed tickets escheat to the state after one year.

Should a permitholder elect to withhold funds for optional additional withholdings without withholding funds for additional capital improvements, the first percent withheld for optional additional withholdings is subject to a 50% surtax. The second percent withheld is subject to a 17.5% surtax.

PURSUANT TO CHAPTER 87-38 LAWS OF FLORIDA

State Tax on Handle. Tax on handle for jai-alai frontons that equaled or exceeded \$30 million in handle for the preceding racing season is 7.1% of the handle in excess of \$25,000 for each performance. Tax on handle for frontons that equaled or exceeded \$15 million but fell below \$30 million in handle for the preceding racing season is 7.1% of the handle in excess of \$40,000 for each performance. Tax on handle for frontons that fell below \$15 million in handle for the preceding racing season is 7.1% of the handle in excess of \$50,000 for each performance.

Thoroughbred Racing

Type of Pari-Mutuel Wagering Pool	Thoroughbred Racing Basic Tax Structure			Optional for Capital Improvement		Optional for Additional Purses and Owners' Awards			Maximum Authorized Takeout						
	Takeout	Minimum Purse	State Tax	Profit and Expense	Takeout	Capital Improv.	Takeout	Add'l Purses	Owners' Awards	Takeout	Purse	Owners' Awards	Capital Improv.	State tax	Profit & Expense
Regular: Win Place & Show	17.6	7.5	3.3% of handle in excess of \$ 300,000 each except as shown below*	Balance of takeout after taxes and purses	0.5	0.5	--	--	--	18.1	7.5	--	0.5	3.3% of handle over \$ 300,000 each performance except as noted below*	Balance of takeout after taxes, purses, and capital improv.
All Exotics: Daily Double Quinella Perfecta Pick 3 Trifecta Pick (N) and Others	19.0	7.5			1.0	1.0	3.0	2.0	1.0	23.0	9.5	1.0	1.0		

In addition to the above, each permitholder is required to pay a daily license fee of \$100 per race unless the average handle per performance for the preceding racing season was under \$100,000 in which case the daily license fee is \$50 per race.

Each permitholder is also required to pay a sum equal to the breaks to the Florida Thoroughbred Breeders' Association to be used to pay Breeder and Stallion Awards.

An admission tax of 15% of the entrance gate admission charge or 10 cents, whichever is greater, is imposed on each person attending a horse race. The permitholder is responsible for the collection of the tax.

The uncashed tickets escheat to the Florida Thoroughbred Breeders' Association after one year and are to be used for the payment of Breeder and Stallion Awards.

Each permitholder is entitled to withhold an additional 1% on exotic wagers for use as owners awards. A permitholder who elects to withhold the additional 1% for owners awards is entitled to withhold up to an additional 2% for overnight purses.

* Tampa Bay Downs is taxed 3.3% of the handle in excess of \$500,000 for the entire year. The exemption for all other thoroughbred tracks is reduced to \$175,000 on all operating days from January 8 through March 6.

Harness Horseracing

Type of Wagering Pool	Harness Horseracing Basic Tax Structure			Optional for Capital Improvement			Optional for Additional Purses			Maximum Authorized Takeout			
	Takeout	Minimum Purse	State Tax	Takeout	Capital Improv.	State Surtax	Takeout	Add'l Purses	Takeout	Minimum Purse	Capital Improv.	State Tax	Profit & Expense
Regular: Win Place & Show	17.6	7.5	3.3% of handle in excess of \$300,000 each performance	0.5	0.5	--	18.1	--	23.0	7.5	0.5	3.3% of handle over \$300,000 each performance plus 0.5% of exotics if withheld	Balance of takeout after taxes and capital improv.
Trifecta and Other Exotics	19.0	7.5		2.0	1.5	0.5*	23.0	1.0	2.0	9.5	1.0		

In addition to the above, each permitholder is required to pay a daily license fee of \$100 per race unless the average handle per performance for the preceding racing season was under \$100,000 in which case the daily license fee is \$50 per race.

Each permitholder is also required to pay a sum equal to the breaks to the Florida Standardbred Breeders' and Owners' Association to be used to pay Breeder and Stallion Awards.

An admission tax of 15% of the entrance gate admission charge or 10 cents, whichever is greater, is imposed on each person attending a horse race. The permitholder is responsible for the collection of the tax.

The uncashed tickets escheat to the Florida Standardbred Breeders' and Owners' Association after one year and are to be used for the payment of Breeder and Stallion Awards.

The withholding of the additional 3% of exotic wagers for additional purses can be taken on any or all exotic wagers and for any amount up to the additional 3%.

* The authorized takeout for capital improvements is one half percent of handle on regular wagering and two percent of handle on exotic wagering. If the track elects to withhold only one percent of exotic wagers for capital improvements, the entire sum is to be used for capital improvements. If, however, the track elects to withhold an additional one percent of exotic wagering for capital improvements, then there is a surtax equal to one half of the additional one percent of the exotic wager withheld.

[Blank unnumbered pages have been removed from this scan.]

This publication was produced at an annual cost of \$9,046.08 or \$11.31 per copy to provide an annual report as required by and in compliance with Section 20.16 (4) (d) F.S. and Section 550.02 (1) F.S