

Florida Department of Business & Professional Regulation

Division of Pari-Mutuel Wagering
82nd Annual Report
Fiscal Year 2012-2013



Rick Scott
Governor



Ken Lawson
Secretary



Leon M. Biegalski
Director

1940 North Monroe Street, Tallahassee, Florida 32399

Ph: 850.488.9130

www.myfloralicense.com/dbpr/pmw/

**DEPARTMENT OF BUSINESS AND PROFESSIONAL REGULATION
 DIVISION OF PARI-MUTUEL WAGERING
 COMPREHENSIVE ANNUAL REPORT
 FISCAL YEAR ENDING JUNE 30, 2013
www.myfloridalicense.com/dbpr/pmw**

INTRODUCTORY SECTION

Overview and Explanation of Report Terminology	2
Division Overview.....	3
Events Shaping the 2012/2013 Racing/Gaming Season in Florida	6

STATISTICAL SECTION

Pari-Mutuel Statistical Data

Fiscal Years Comparative Data	7
Graphs - Historical Pari-Mutuel Wagering Activity	8
Components of Pari-Mutuel Handle From Performances	11
Total State Revenue From Performances	12
Total Regular and Charity/Scholarship Handle.....	13
Total Intertrack Wagering Handle by Guest.....	14
Charity and Scholarship Performances, Racing Scholarship Trust Fund, and Abandoned Winning Tickets.....	17

Cardroom Statistical Data

Cardroom Comparative Data.....	18
Components of Cardroom Revenue by Association.....	19

Slot Statistical Data

Slot Comparative Data.....	20
Revenue per Machine Compared to Average Number of Machines by Month.....	21

DATA BY ASSOCIATION/FACILITY

Pari-Mutuel Facilities Map by Permit Type.....	23
Contact and Operating Information by Association/Facility.....	24
Promotional Programs for Florida-Bred Horses.....	34
Drug Positives Statistical Data.....	35

FINANCIAL STATEMENTS

Summary of State Revenue from Cardroom, Pari-Mutuel, Slot Activities, and Indian Gaming Compact.....	36
Balance Sheet - Special Revenue Fund.....	37
Statement of Revenue, Expenditures & Changes in Fund Balance - Budget & Actual – Special Revenue Fund.....	38

CARDROOM, PARI-MUTUEL, AND SLOT STATUTE MATRIX

Summary of Pari-Mutuel Handle Distribution.....	39
Summary of Cardroom Distribution.....	42
Summary of Slot Distribution.....	43

INTRODUCTION

OVERVIEW

This annual report encompasses the fiscal year which began July 1, 2012, and ended June 30, 2013. This is the 82nd annual report in the series. The first annual report was issued for Fiscal Year 1931/1932, the initial year of legalized pari-mutuel wagering. In Florida, pari-mutuel wagering is authorized for horse racing, harness horse racing, quarter horse racing, greyhound racing, jai alai games, and cardroom poker games. Additionally, slot machine gaming at pari-mutuel facilities is authorized in Broward and Miami-Dade Counties. Florida is one of the primary pari-mutuel states in the nation, and is the leading state in greyhound racing, as well as a major horse racing state. Florida is also the only state in the United States where live jai alai games are conducted. As of June 30, 2013, there were 30 pari-mutuel facilities located throughout the state, with one of the facility's holding both limited intertrack wagering and pari-mutuel wagering. This annual report, which is required by Florida law, is intended to inform the Governor, the Legislature, the industry, and other interested parties of wagering activities at authorized pari-mutuel facilities. The report is organized into five primary sections:

1. **Introductory Section** - An overview of the Division of Pari-Mutuel Wagering and a report of events that occurred impacting the division's oversight of facilities or events that affected the operation of facilities.
2. **Statistical Section** – Details various cardroom, pari-mutuel, and slot statistical data by individual racing association or fronton.
3. **Data by Association/Facility** – Includes a map showing location of each association/facility that operated during the 2012/2013 Fiscal Year, contact and operating information by association/facility, promotional programs for Florida-bred horses and impermissible substance positives statistical data.
4. **Financial Section** - Official financial statements of the Division of Pari-Mutuel Wagering.
5. **Statute Matrix** - A table that summarizes the statutes regarding the taxes and fees applicable to pari-mutuel wagering and cardroom activity. It also includes a summary of the statutes regarding the taxes, fees, fines, and penalties with respect to slot machine gaming.

EXPLANATION OF REPORT TERMINOLOGY

Florida law requires intertrack wagers to be combined with the wagering pools of the host or the broadcasting Florida track or fronton. The law also requires that the host take-out on intertrack wagers be the same as for on-track wagers; however, the distribution of the take-out may be different. The tax structure for on-track and intertrack wagering is explained in more detail in the statute matrix section.

Pursuant to Section 550.002(13), Florida Statutes, handle is defined as the aggregate contributions to pari-mutuel pools. For purposes of this report, the four types of handle detailed in this report are as follows:

- Live Ontrack: Handle from live races/games at the track/fronton.
- Simulcast: Handle from races/games originating from out-of-state and broadcast to a Florida track/fronton.
- Intertrack: Handle from where a Florida track/fronton (acting as host) broadcast live races/games to other Florida tracks/frontons.
- Intertrack Simulcast: Handle from rebroadcasting of simulcast signals received by a Florida track/fronton to other Florida tracks/frontons.

All intertrack and intertrack simulcast handle is detailed by the host permitholder in this report. These schedules reflect combined wagering statistics for all guest facilities that received broadcasts and conducted wagering and included in the wagering pools of the host. For host permitholders, a summary of intertrack handle components for each guest is shown in the statistical section of this report. The schedules of intertrack wagering handle by guest include data on wagers from intertrack handle and intertrack simulcast handle. Any paid attendance, admission tax, purses paid, or players' awards paid are detailed in the data by association/facility section of the report.

THE DIVISION OF PARI-MUTUEL WAGERING

The Division of Pari-Mutuel Wagering is a program area of the Department of Business and Professional Regulation within the Executive Branch of Florida's government. The division is charged with regulating Florida's pari-mutuel, cardroom and slot machine gaming industries, as authorized by Chapters 550, 551, and Section 849.086, Florida Statutes, as well as collecting and safeguarding associated revenues due to the state. Authorized pari-mutuel events include harness racing, quarter horse racing, thoroughbred racing, greyhound racing, and jai alai. Pari-Mutuel Wagering was originally authorized by the Legislature in 1931. Since that time, the division has evolved from a racing commission into a professional regulatory organization overseeing a complex and dynamic industry located throughout the state. Additionally, the Division of Pari-Mutuel Wagering was designated by the Florida Legislature as the State Compliance Agency with the authority to carry out the State's oversight responsibilities in accordance with the provisions outlined in the Compact between the State of Florida and the Seminole Tribe of Florida.

OFFICE OF THE DIRECTOR

The Office of the Director provides leadership, oversight, and administration of the six functional areas within the division. Specific responsibilities include budget planning, rule promulgation, policy development, legislative analysis of proposed legislation, strategic planning, fleet management, staff development and enforcement of administrative actions. Additionally, the Office of the Director ensures that all areas of the division operate in a cooperative effort to ensure efficient regulatory oversight of the industry.

The division's structure includes six functional areas which act under the management of the Office of the Director. These functional areas include Revenue and Financial Analysis, Auditing, Operations, Investigations, Slot Operations and State Compliance Agency. Each area focuses on a different aspect of regulation within the cardroom, pari-mutuel and slot machine gaming industry, as well as the state's Compact with the Seminole Tribe of Florida, in an effort to protect state revenues and maintain the public's confidence in the integrity of the wagering activity.

OFFICE OF OPERATIONS

All individuals and businesses who work or conduct business at a racetrack, fronton, cardroom, or slot machine facility and who have access to wagers, restricted areas, and/or racing animals, must obtain an occupational license issued by the division. Every racing and cardroom occupational licensee is fingerprinted upon initial licensure and every five years thereafter; and every slot machine occupational licensee is fingerprinted upon initial licensure and every three years thereafter. Each set of fingerprints are submitted electronically to the Florida Department of Law Enforcement and Federal Bureau of Investigation for processing. During Fiscal Year 2012/2013, Operations' Licensing Section processed 21,663 occupational license applications for businesses and individuals, of which 1,895 were related to cardroom operations; 19,768 were related to racing operations; and 4,137 were related to slot machine operations. The decline in the number of applications processed during Fiscal Year 2012/2013, is due to the elimination of one-year occupational licenses for pari-mutuel and cardroom operations that began during Fiscal Year 2011/2012. The Office of Operations also processes applications for the issuance of all pari-mutuel permitholder Annual Operating Dates Licenses, Cardroom Operator Licenses and Slot Machine Licenses to authorized facilities.

The Office of Operations is also responsible for ensuring that the day-to-day operation of races and games are conducted in accordance with Florida's pari-mutuel statutes and rules. The State Stewards monitor each race/game and conduct inquiries and hearings for alleged violations of the State's pari-mutuel statutes and rules. The Stewards and Hearing Officers issued 70 rulings and 199 consent orders; assessed fines totaling \$66,375; and imposed 27 license suspensions for violations in Fiscal Year 2012/2013.

Operations' staff collects urine and blood samples from racing animals which are sent to the University of Florida, College of Medicine Racing Laboratory for analysis. The Racing Laboratory performs its services under an annual contract with the division. State veterinarians and veterinary assistants collected 89,530 samples that included 69,397 greyhound urine samples and 20,133 horse urine and blood samples. Additionally, division investigators submitted 66 investigative samples during Fiscal Year 2012/2013. There were 306 positive findings of impermissible substances in the samples collected.

OFFICE OF AUDITING

The Office of Auditing is responsible for conducting various audits to ensure the integrity of wagering activity and protect the wagering public by ensuring that cardroom, pari-mutuel and slot machine wagering is conducted in compliance with the Florida Statutes and Florida Administrative Code. Such compliance issues include pari-mutuel broadcast exchanges; verification that takeout/commissions are consistent with notification requirements; interstate wagering restrictions; identification of fraudulent activity; verification that statutory accounting procedures are utilized; oversight of the commingling of wagering pools; transmission of pari-mutuel information; proper payments to winning pari-mutuel patrons; approval of totalisator security plans and software upgrades. Additionally, the auditing staff maintains primary oversight for cardroom operations, which includes: auditing internal control procedures; reviewing tournament or promotional proposals; auditing jackpot accounts; monitoring daily operations; and coordinating inspections. The auditing staff became the primary contributor this year for data entry of handle and wagering information into the division's Central Monitoring System (CMS).

During Fiscal Year 2012/2013, the auditing staff conducted reviews for 62,305 races/games and associated wagering pools, 20 greyhound purse audits, 21 greyhound adoption proceeds audits, 32 mutuels audits, 30 escheat audits, 25 cardroom audits, 25 surveillance tape audits, 25 jackpot audits, six slot audits, six players' club audits, four horse track breeders' cardroom gross receipts payout audits, eight jai alai players' cardroom gross receipts prize payout audits, three breeders' awards audits and 21 totalisator system malfunction reports. Auditing's cardroom coordinators audited 122 tournament and jackpot proposals, 78 internal control submissions, nine new card game proposals, 22 revised cardroom floor plans and 56 cardroom internal audits.

OFFICE OF INVESTIGATIONS

The Office of Investigations examines statutory and rule violations that occur at pari-mutuel facilities, cardrooms, and slot machine gaming locations. Investigative staff is responsible for investigating Class I drug positives analyzed and identified by the University of Florida, College of Medicine Racing Laboratory. The investigations vary from patron complaints, animal cruelty, to the use of performance altering medications and/or illegal substances during races. A case may result in issuance of a warning letter, consent order, administrative fine, license suspension, hearing before a designated hearing officer or referral to either regulatory or law enforcement agencies for criminal prosecution. During Fiscal Year 2012/2013, there were 309 investigations conducted.

The investigation staff also conducts background examinations of potential permit holders which involves an in-depth review of the applicant's financial records in order to ensure compliance with Sections 550.054, 550.1815 and 849.086, of the Florida Statutes. Additionally, investigators perform background reviews of Pari-Mutuel Wagering Occupational License requests from applicants with criminal records requesting a waiver from the Division Director in accordance with Section 550.105, Florida Statutes.

The investigation staff also conducted 4,682 in-depth inspections of pari-mutuel and slot machine facilities, including cardrooms, greyhound kennels and horse stables; both prior to opening as well as throughout the operating year.

OFFICE OF SLOT OPERATIONS

The Slot Operations' staff is responsible for overseeing state personnel located at each of the three pari-mutuel facilities in Broward County and each of the four pari-mutuel facilities in Miami-Dade County that have slot machine gaming. To ensure the integrity of slot machine gaming activity, the Slot Operations' staff oversees the day-to-day operations at the slot machine facilities, performs daily revenue reconciliations, verifies that every slot machine has been certified by an independent testing laboratory, issues slot machine occupational licenses to individuals, and ensures slot machine gaming activity is in compliance with the requirements of Chapter 551, Florida Statutes, Chapter 61D-14, Florida Administrative Code, as well as the internal controls of the individual facilities.

During Fiscal Year 2012/2013, the Slot Operations' staff completed 6,606 inspections. Of those, 195 items were found to be non-compliance, of which one was turned over to Investigations and to the Department's Office of the General Counsel for formal proceedings. Slot machine facilities were notified of 195 observations so that appropriate internal action, including employee disciplinary action, advanced training and/or re-training of facility personnel, could occur. There were 14 individual and facility Consent Orders issued at the regional level totaling \$2,200 in fines or final warning notices.

There were 613 shipments of authorized slot machines and components, which required the verification of 1,711 slot machines and 12,230 parts. The Slot Operations' staff authorized and monitored 7,891 slot machine conversions, denomination and/or game theme changes, slot machine relocations and other related slot machine changes.

OFFICE OF REVENUE AND FINANCIAL ANALYSIS

The Revenue and Financial Analysis staff is responsible for safeguarding and accounting for state revenues in accordance with Florida Statutes and Florida Administrative Code, as it relates to cardroom, pari-mutuel and slot gaming activities. The staff develops revenue projections for the Revenue Estimating Conferences, maintains cash flow statements for timely transfer to the State's General Revenue Fund and to the Education Enhancement Trust Fund, provides oversight of the division's budget, develops the annual report, and determines fiscal impacts on proposed legislation impacting the industry.

During Fiscal Year 2012/2013, \$198,431,671 in state revenues pertaining to cardroom, pari-mutuel and slot machine gaming were collected. The Revenue and Financial Analysis staff also reconciled 725 permitholder monthly remittance reports and conducted 39 charity day audits and 37 uniform annual report audits. The Revenue and Financial Analysis staff compiles statistical information for cardroom, pari-mutuel and slot machine gaming, and performs analyses requested by the department, the Executive Office of the Governor, the Legislature and the industry.

STATE COMPLIANCE AGENCY

The Gaming Compact between the Seminole Tribe of Florida and the State of Florida, 75 FR 38833, was executed by the Governor on April 7, 2010, and ratified by the United States Department of the Interior on July 7, 2010. Pursuant to Section 285.710, Florida Statutes, the Division of Pari-Mutuel Wagering was designated by the Florida Legislature as the State Compliance Agency with the authority to carry out the State's oversight responsibilities in accordance with the provisions outlined in the Compact. The Seminole Tribe of Florida operates seven (7) casinos located in Broward, Hillsborough, Collier, Glades and Hendry counties.

During Fiscal Year 2012/2013, the State Compliance Agency completed 78 inspections of tribal gaming facilities spanning over 738 man hours. Additionally, \$226,083,337 in revenue sharing with the Tribe was collected. Of this, \$4,500,000 was distributed to local governments, including both counties and municipalities, as required by Section 285.710, Florida Statutes.

The Miccosukee Tribe was not made a part of this Compact, and therefore continue to operate exclusively under Federal jurisdiction. For additional information on the Miccosukee's gaming operations, contact the National Indian Gaming Commission, www.nigc.gov, or at the United States Department of Interior, 1441 L Street N.W., Suite 9100, Washington, D.C. 20005-3584, Telephone 202.632.7003.

Events Shaping the 2012/2013 Racing/Gaming Season in Florida

- Bayard Raceways, Inc., d/b/a St. Johns Greyhound Park, closed their cardroom on November 19, 2012. Bayard Raceways, Inc., opened October 1977 and opened their cardroom during the 2003/2004 Fiscal Year.
- Quarter horse races were held at Ocala Breeders' Sales Company, Inc., on October 20, 2012, under South Marion Real Estate Holdings, LLC's license, and December 11, 2012, under Ocala Breeders' Sales Company, Inc.'s license. Additionally, Hamilton Downs Horsetrack, LLC, held quarter horse races for the first time from October 12 through October 18, 2012, and January 2 through January 6, 2013.
- Beginning January 23, 2013, the division implemented an on-line application process for individuals and businesses applying for an initial pari-mutuel, cardroom, or slot machine occupational license.
- Effective May 21, 2013, the division implemented an Animal Welfare rule. Rule 61D-2.023, Florida Administrative Code, was adopted to ensure the health, safety, and welfare of racing animals and outrider horses housed at the pari-mutuel facilities.
- West Flagler Associates, Ltd., d/b/a Magic City Jai Alai, held performances for the first time at Miami Jai Alai from May 1, 2013, through June 30, 2013.

STATISTICAL SECTION

FISCAL YEARS COMPARATIVE DATA

Beginning with the 1931/1932 Fiscal Year, the state began collecting taxes on pari-mutuel wagering. In most recent years, pari-mutuel handle has steadily declined. During that initial year, the pari-mutuel industry operated 462 racing days in Florida, which resulted in state revenue of \$737,301; total paid attendance of 1,157,161; and total pari-mutuel handle of \$17,365,424.

Since Fiscal Year 1931/1932, approximately \$73.2 billion in pari-mutuel handle wagered resulted in \$4.35 billion in state revenue. This fiscal year, the pari-mutuel industry operated 3,628 racing days, which resulted in state revenue of \$13,200,709; total paid attendance of 430,707; and total pari-mutuel handle of \$872,272,660.

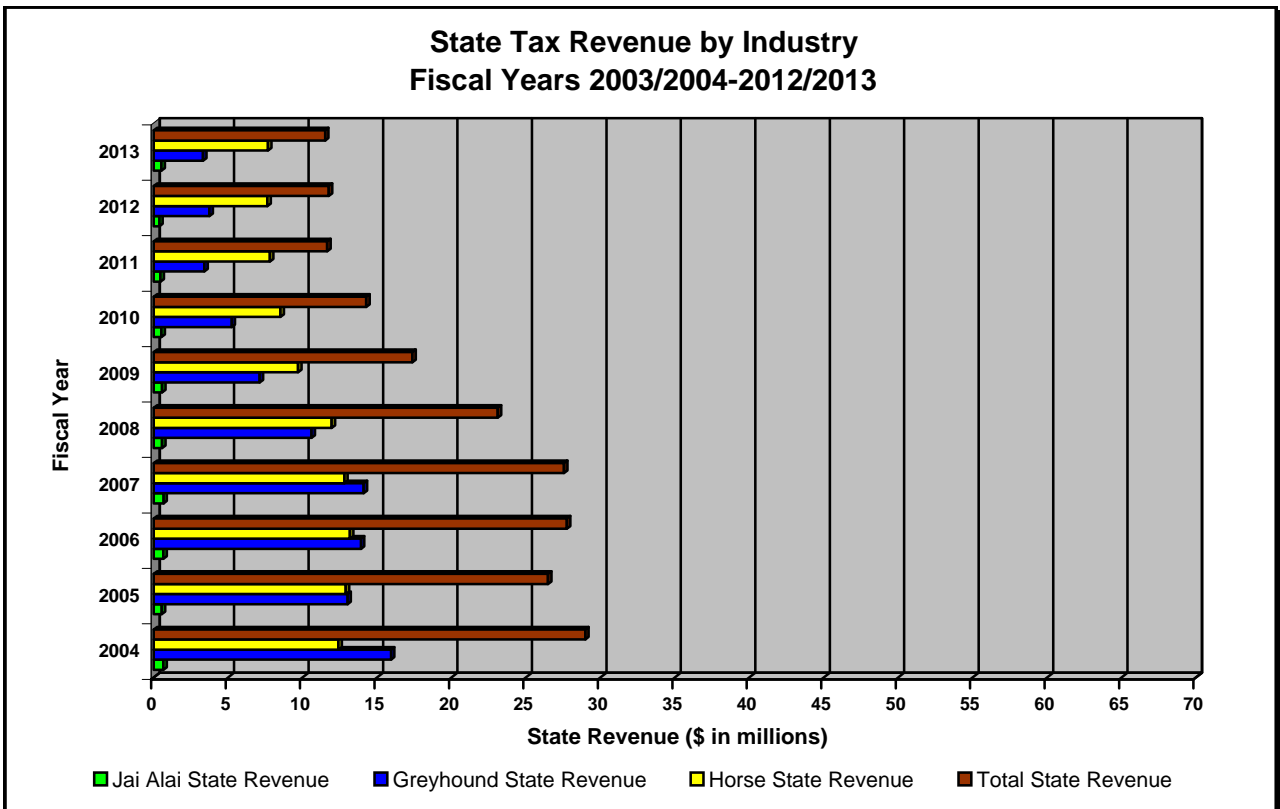
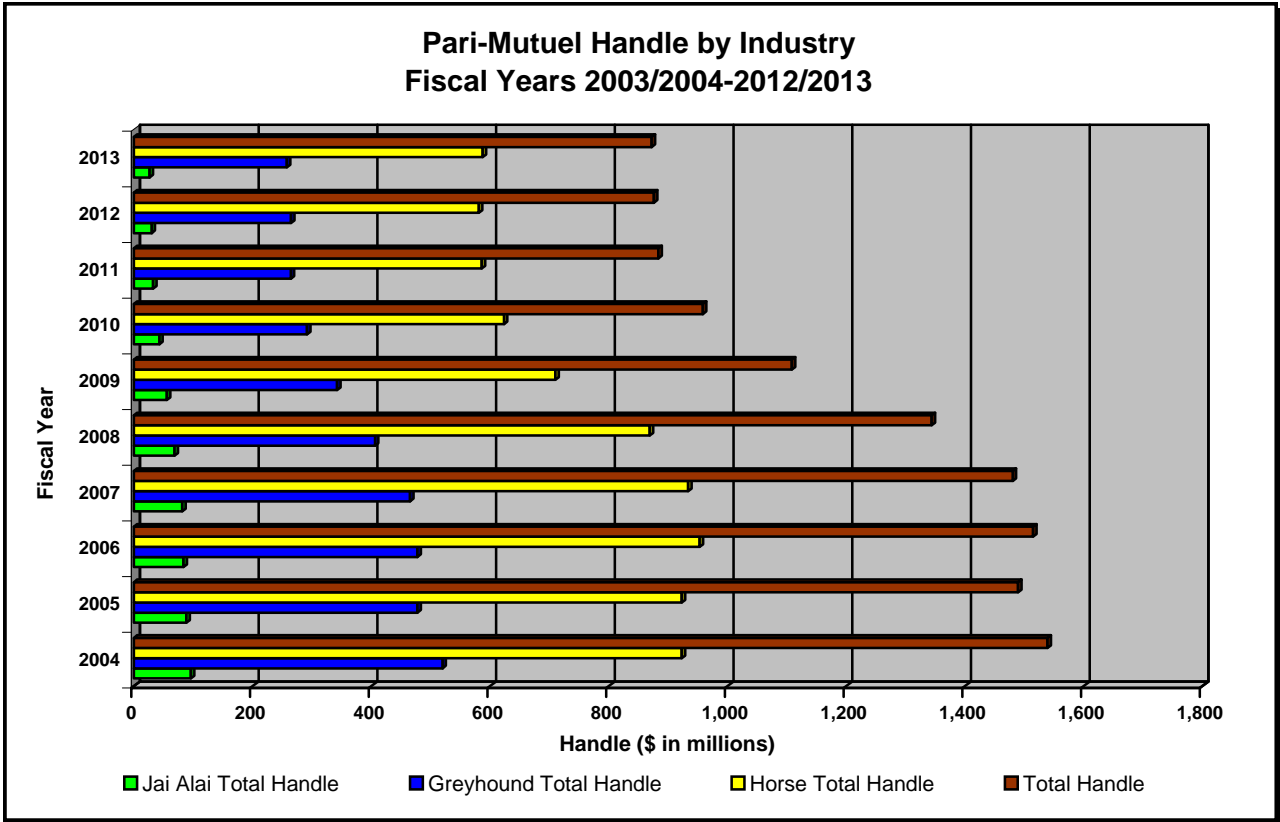
Over the last 10 years, pari-mutuel wagering has experienced a 43.3 percent decline in handle, and total state revenue has decreased 61.4 percent, along with a 18.6 percent decrease in the number of racing days. Shown below is a summary of pari-mutuel handle and state revenue for Fiscal Years 2003/2004 through 2012/2013.

PARI-MUTUEL HANDLE AND STATE REVENUE SUMMARY

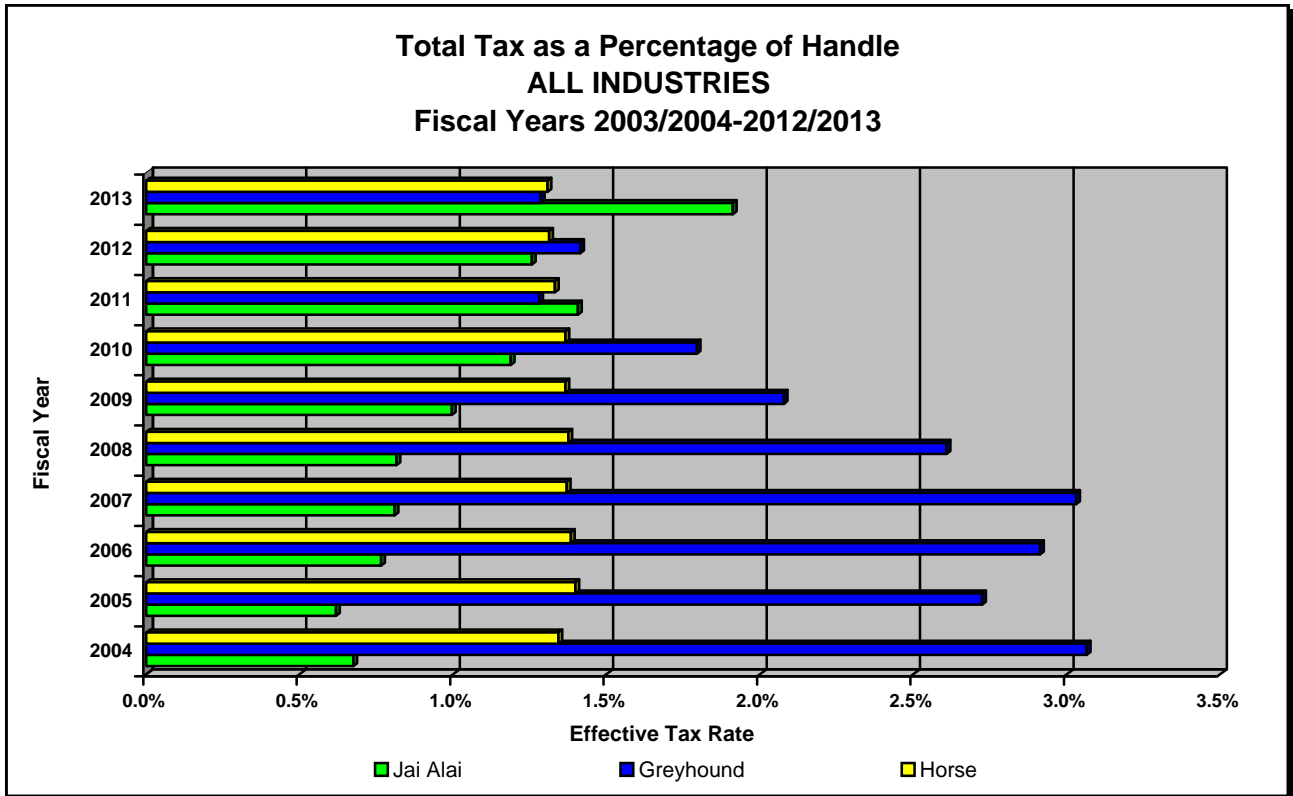
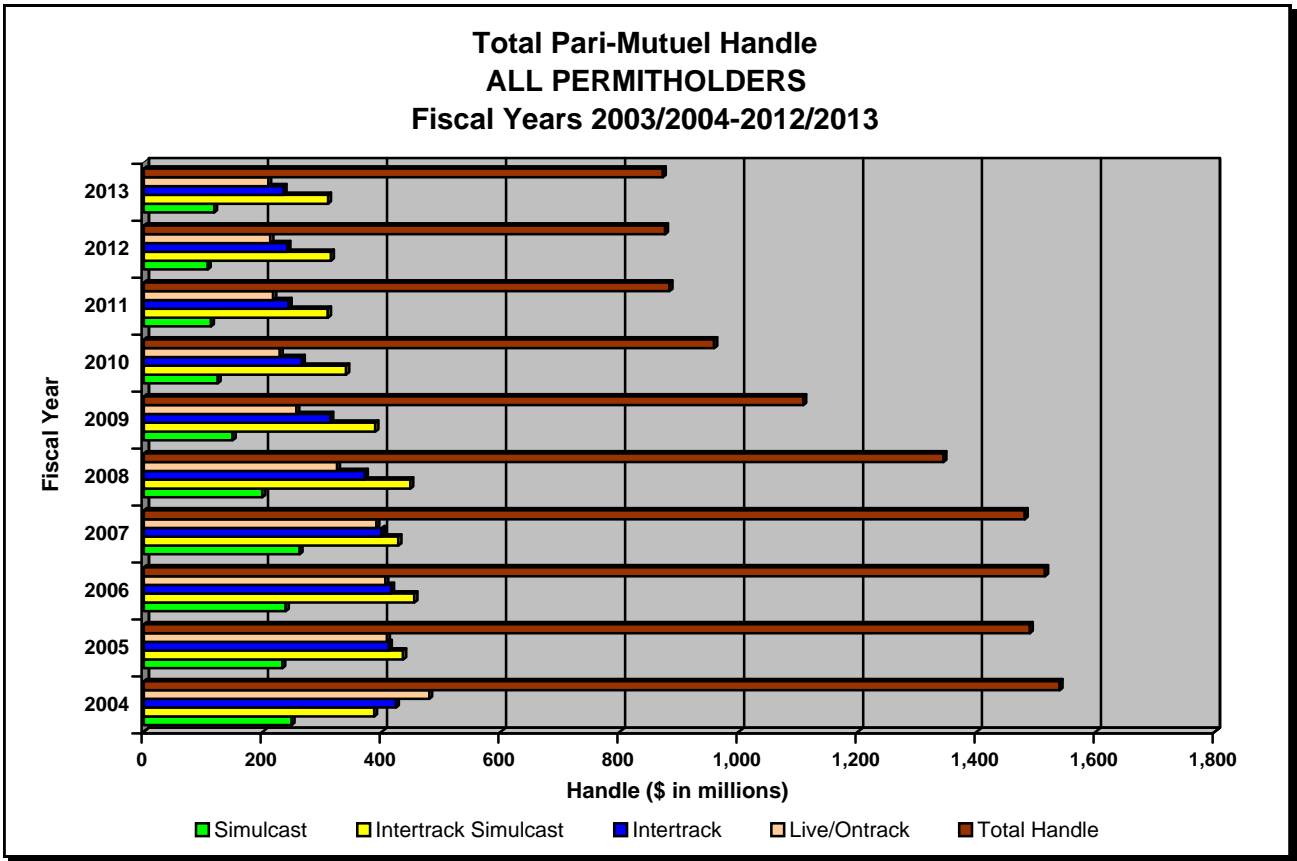
<i>Fiscal Year</i>	<i>Number of Racing Days</i>	<i>Total Paid Attendance</i>	<i>Total Pari-Mutuel Handle</i>	<i>Total State Revenue ⁽¹⁾</i>	<i>State Revenue as a Percent of Handle</i>
2003/2004	4,459	2,804,583	\$1,539,122,995	\$34,218,813	2.22%
2004/2005	4,424	2,135,044	\$1,489,330,477	\$33,199,857	2.23%
2005/2006	4,993	2,066,192	\$1,514,758,761	\$35,178,969	2.32%
2006/2007	5,592	2,351,126	\$1,480,427,370	\$30,214,151	2.04%
2007/2008	4,857	1,419,748	\$1,343,912,504	\$25,657,727	1.91%
2008/2009	4,364	722,699	\$1,108,401,006	\$19,814,027	1.79%
2009/2010	4,167	614,889	\$ 958,537,395	\$16,706,611	1.74%
2010/2011	3,633	507,804	\$ 883,381,429	\$13,640,020	1.54%
2011/2012	3,602	469,497	\$ 876,146,485	\$13,802,723	1.58%
2012/2013	3,628	430,707	\$ 872,272,660	\$13,200,709	1.51%

(1) Beginning 2006/2007, this figure includes state revenue from pari-mutuel performances and other state revenue, and does not include state revenue from cardroom and slot operations.

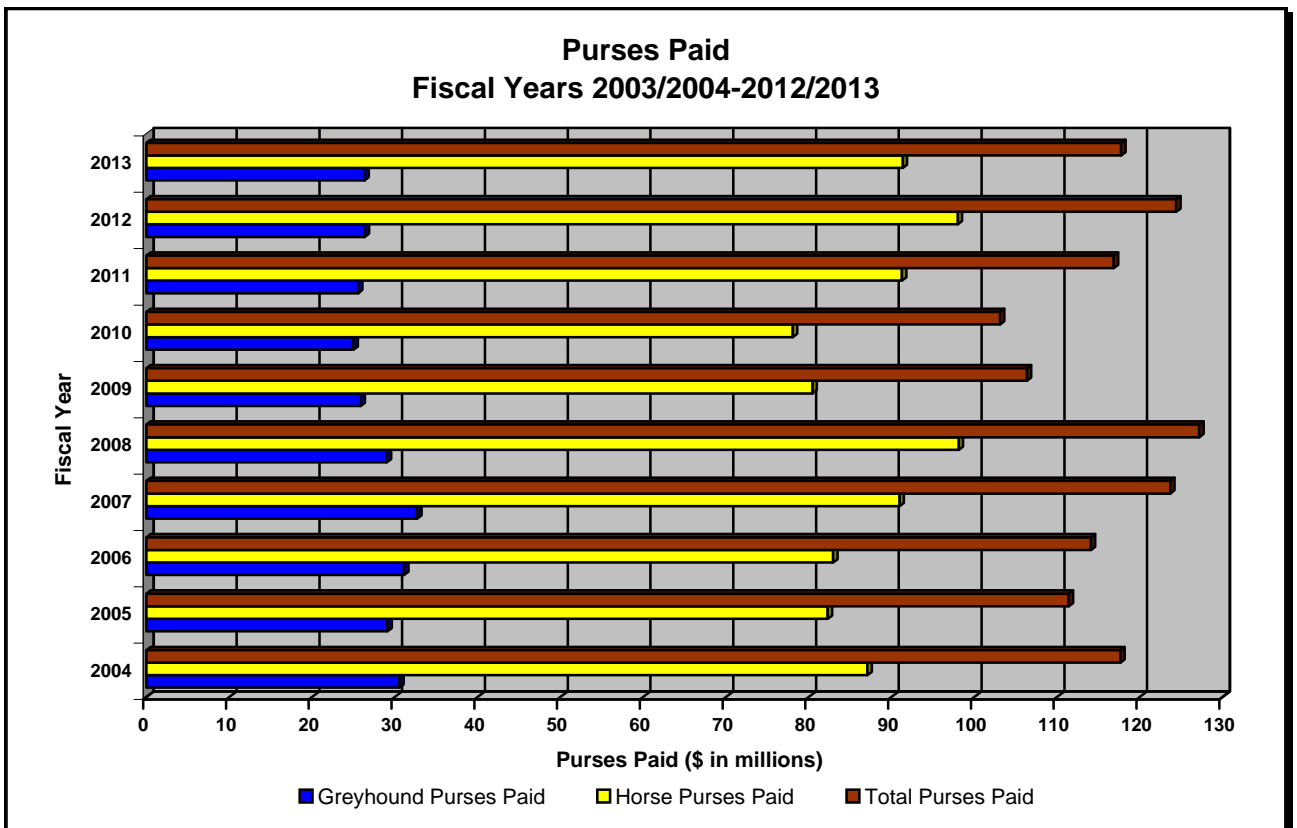
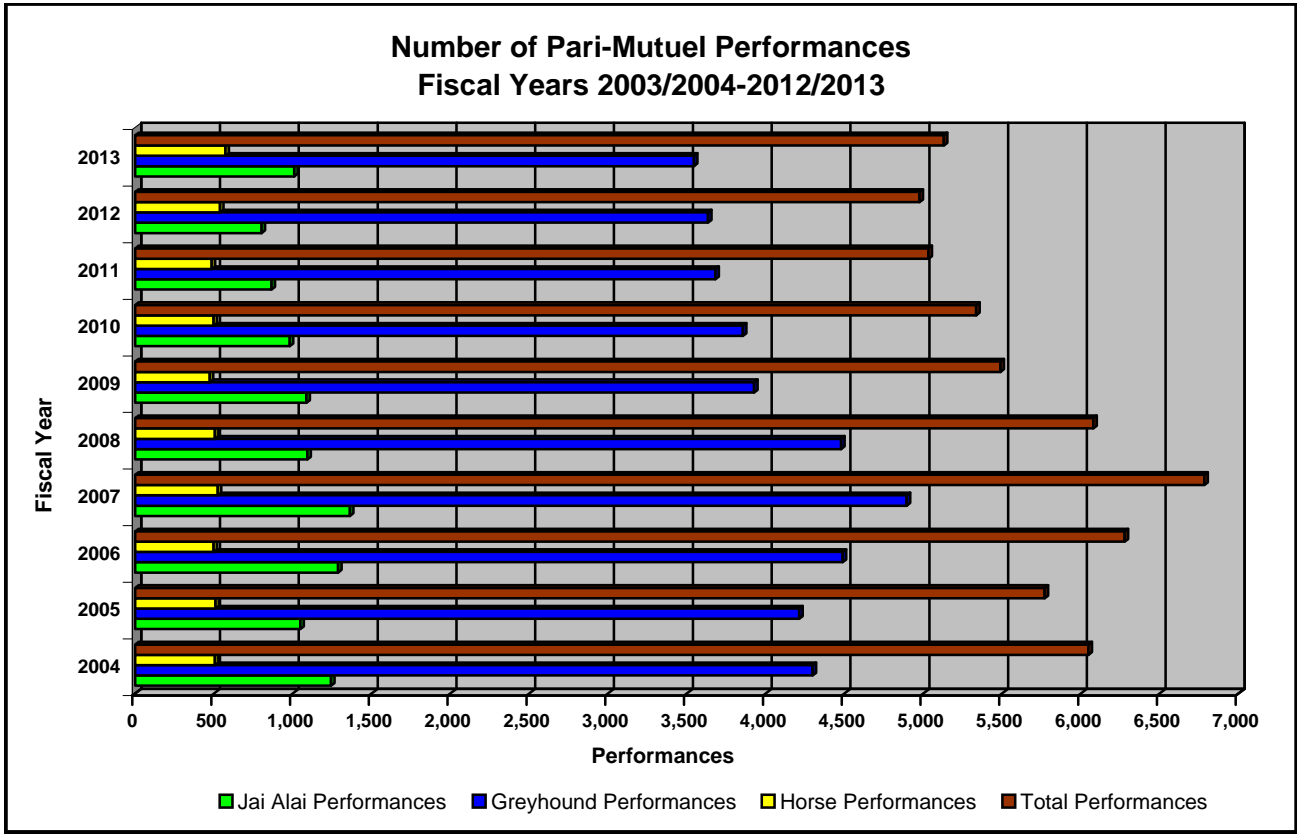
HISTORICAL PARI-MUTUEL WAGERING ACTIVITY



HISTORICAL PARI-MUTUEL WAGERING ACTIVITY



HISTORICAL PARI-MUTUEL WAGERING ACTIVITY



COMPONENTS OF PARI-MUTUEL HANDLE FROM PERFORMANCES

Fiscal Year 2012/2013

Greyhound Racing Associations

	Daily License Fee	Tax on Handle	Total Paid To Charities	Permitholder Revenues From Pari-Mutuel Handle	Public Pool	Total Handle
Daytona Beach Kennel Club, Inc.	\$17,640	\$0	\$30,722	\$2,188,892	\$5,907,826	\$8,145,080
Derby Lane (St. Petersburg Kennel Club, Inc.)	75,520	307,019	142,842	5,690,247	19,997,288	26,212,916
Ebro Greyhound Park	46,800	26,912	7,210	472,414	1,172,181	1,725,517
Flagler Dog Track	144,080	556,100	60,897	3,687,851	14,954,986	19,403,914
H&T Gaming, Inc., d/b/a Mardi Gras Racetrack	36,472	160,568	41,532	2,144,853	8,291,673	10,675,098
Jacksonville Kennel Club, Inc.	27,600	62,599	101,589	3,006,964	10,296,155	13,494,907
Jefferson County Kennel Club, Inc.	15,980	2,290	0	45,724	148,254	212,248
License Acquisitions, LLC, d/b/a Palm Beach Greyhound Racing	20,400	27,687	89,364	3,283,214	11,050,397	14,471,062
Mardi Gras Racetrack and Gaming Center	22,120	50,782	47,724	1,764,622	6,554,212	8,439,460
Melbourne Greyhound Park, LLC	2,158	313	0	33,137	80,848	116,456
Naples-Ft. Myers Greyhound Track	112,960	275,585	53,751	4,120,513	15,206,834	19,769,643
Orange Park Kennel Club, Inc.	21,280	22,628	85,507	2,588,342	8,754,080	11,471,837
Palm Beach Kennel Club	133,360	561,885	102,746	10,323,794	36,021,092	47,142,877
Penn Sanford, LLC, d/b/a Sanford-Orlando Kennel Club	14,400	0	30,713	1,369,837	5,053,862	6,468,812
Pensacola Greyhound Racing, LLP	36,095	17,805	0	278,033	977,016	1,308,949
SOKC, LLC, d/b/a Sanford-Orlando Kennel Club	37,585	59,220	16,443	1,784,772	6,693,701	8,591,721
Sarasota Kennel Club, Inc.	11,040	5,203	35,645	1,763,586	5,595,623	7,411,097
St. Johns Greyhound Park	44,400	138,671	92,244	5,283,770	17,908,044	23,467,129
Tampa Greyhound Track	44,400	135,334	112,097	5,154,470	17,316,882	22,763,183
West Volusia Racing, Inc.	23,400	6,659	27,744	1,801,311	4,938,728	6,797,842
Total Greyhound Tracks	\$887,690	\$2,417,260	\$1,078,770	\$56,786,346	\$196,919,682	\$258,089,748

Jai Alai Frontons

Dania Jai Alai	\$106,120	\$0	\$1,592	\$2,378,247	\$7,506,502	\$9,992,461
Dania Summer Jai Alai	60,800	0	1,524	1,248,193	3,955,238	5,265,755
Ft. Pierce Jai Alai	13,760	0	0	64,632	205,688	284,080
Hamilton Jai Alai and Poker	72,000	0	0	(72,000)	0	0
Miami Jai Alai	73,440	0	10,323	1,421,892	4,318,614	5,824,269
Ocala Poker and Jai Alai	13,120	0	0	(13,120)	0	0
Orlando Jai Alai	28,360	0	901	51,072	249,289	329,622
Summer Jai Alai	36,960	0	4,353	746,602	2,249,174	3,037,089
West Flagler Associates, LTD., d/b/a Magic City Jai Alai	27,840	77,604	1,774	396,410	1,436,873	1,940,501
Total Jai Alai Frontons	\$432,400	\$77,604	\$20,467	\$6,221,928	\$19,921,378	\$26,673,777

Thoroughbred Racing Associations

Calder Race Course, Inc.	\$155,400	\$1,687,794	\$309,286	\$26,823,792	\$111,271,950	\$140,248,222
Gulfstream Park Racing Association, Inc.	179,300	1,785,290	181,570	39,021,532	153,305,942	194,473,634
Tampa Bay Downs, Inc.	197,300	1,347,871	112,958	24,699,521	70,045,657	96,403,307
Tropical Park, Inc.	109,500	1,251,520	241,226	21,373,657	84,558,812	107,534,715
Total Thoroughbred Tracks	\$641,500	\$6,072,475	\$845,040	\$111,918,502	\$419,182,361	\$538,659,878

Harness Racing Associations

Isle Casino and Racing at Pompano Park	\$314,800	\$532,404	\$8,495	\$9,987,918	\$36,527,015	\$47,370,632
--	-----------	-----------	---------	-------------	--------------	--------------

Quarter Horse Racing Associations

Gretna Racing, LLC	\$25,900	\$55	\$25	(\$24,498)	\$6,596	\$8,078
Hamilton Downs Horsetrack, LLC	32,000	1	0	(\$31,979)	108	130
Ocala Breeders' Sales Company, Inc.	200	49	0	\$1,153	5,099	6,501
South Florida Racing Association, LLC (Hialeah Park)	26,000	16,106	0	\$243,701	1,178,036	1,463,843
South Marion Real Estate Holdings, LLC	200	1	0	(\$188)	60	73
Total Quarter Horse Tracks	\$84,300	\$16,212	\$25	\$188,189	\$1,189,899	\$1,478,625

TOTAL FOR ALL TRACKS AND FRONTONS

	\$2,360,690	\$9,115,955	\$1,952,797	\$185,102,883	\$673,740,335	\$872,272,660
--	--------------------	--------------------	--------------------	----------------------	----------------------	----------------------

TOTAL STATE REVENUE FROM PERFORMANCES

Fiscal Year 2012/2013

	LIVE			SIMULCAST			ITW	ITW SIM	CHARITY PERFORMANCES	TOTAL TAXES and FEES COLLECTED ^(A)
	Tax on License Handle	Total Live License Fee	Taxes and Fees Collected	Tax on License Handle	Total Simulcast License Fee	Taxes and Fees Collected	Tax on Handle	Tax on Handle	Daily License Fee	
Greyhound Racing Associations										
Daytona Beach Kennel Club, Inc.	\$0	\$0	\$0	\$0	\$0	\$0	\$0	\$0	\$17,640	\$17,640
Derby Lane (St. Petersburg Kennel Club, Inc.)	139,312	61,120	200,432	0	0	0	167,707	0	14,400	382,539
Ebro Greyhound Park	26,912	40,400	67,312	0	0	0	0	0	6,400	73,712
Flagler Dog Track	54,170	77,600	131,770	55,185	53,000	108,185	109,728	337,017	13,480	700,180
H&T Gaming, Inc., d/b/a Mardi Gras Racetrack	4,837	7,200	12,037	46,876	19,572	66,448	8,171	100,684	9,700	197,040
Jacksonville Kennel Club, Inc.	23,492	13,200	36,692	0	0	0	39,107	0	14,400	90,199
Jefferson County Kennel Club, Inc.	2,290	15,980	18,270	0	0	0	0	0	0	18,270
License Acquisitions, LLC, d/b/a Palm Beach Greyhound Racing	10,099	6,000	16,099	0	0	0	17,588	0	14,400	48,087
Mardi Gras Racetrack and Gaming Center	9,178	7,920	17,098	9,883	4,500	14,383	10,409	21,312	9,700	72,902
Melbourne Greyhound Park, LLC	313	2,158	2,471	0	0	0	0	0	0	2,471
Naples-Ft. Myers Greyhound Track	162,523	103,040	265,563	0	0	0	113,062	0	9,920	388,545
Orange Park Kennel Club, Inc.	8,151	6,880	15,031	0	0	0	14,477	0	14,400	43,908
Palm Beach Kennel Club	235,925	118,960	354,885	0	0	0	325,960	0	14,400	695,245
Penn Sanford, LLC, d/b/a Sanford-Orlando Kennel Club	0	0	0	0	0	0	0	0	14,400	14,400
Pensacola Greyhound Racing, LLP	17,805	36,095	53,900	0	0	0	0	0	0	53,900
SOKC, LLC, d/b/a Sanford-Orlando Kennel Club	37,881	29,985	67,866	0	0	0	21,339	0	7,600	96,805
Sarasota Kennel Club, Inc.	4,807	2,720	7,527	0	0	0	396	0	8,320	16,243
St. Johns Greyhound Park	55,553	30,000	85,553	0	0	0	83,118	0	14,400	183,071
Tampa Greyhound Track	60,971	30,000	90,971	0	0	0	74,363	0	14,400	179,734
West Volusia Racing, Inc.	3,888	6,000	9,888	0	0	0	2,771	0	17,400	30,059
Total Greyhound Tracks	\$858,107	\$595,258	\$1,453,365	\$111,944	\$77,072	\$189,016	\$988,196	\$459,013	\$215,360	\$3,304,950
Jai Alai Frontons										
Dania Jai Alai	\$0	\$105,160	\$105,160	\$0	\$0	\$0	\$0	\$0	\$960	\$106,120
Dania Summer Jai Alai	0	59,840	59,840	0	0	0	0	0	960	60,800
Ft. Pierce Jai Alai	0	13,440	13,440	0	0	0	0	0	320	13,760
Hamilton Jai Alai and Poker	0	72,000	72,000	0	0	0	0	0	0	72,000
Miami Jai Alai	0	70,080	70,080	0	0	0	0	0	3,360	73,440
Ocala Poker and Jai Alai	0	13,120	13,120	0	0	0	0	0	0	13,120
Orlando Jai Alai	0	26,360	26,360	0	0	0	0	0	2,000	28,360
Summer Jai Alai	0	36,000	36,000	0	0	0	0	0	960	36,960
West Flagler Associates, LTD., d/b/a Magic City Jai Alai	17,397	27,360	44,757	0	0	0	60,207	0	480	105,444
Total Jai Alai Frontons	\$17,397	\$423,360	\$440,757	\$0	\$0	\$0	\$60,207	\$0	\$9,040	\$510,004
Thoroughbred Racing Associations										
Calder Race Course, Inc.	\$43,461	\$75,500	\$118,961	\$122,874	\$71,500	\$194,374	\$141,324	\$1,380,135	\$8,400	\$1,843,194
Gulfstream Park Racing Association, Inc.	252,865	86,900	339,765	190,511	84,000	274,511	467,420	874,494	8,400	1,964,590
Tampa Bay Downs, Inc.	70,589	86,000	156,589	51,710	103,000	154,710	333,819	891,753	8,300	1,545,171
Tropical Park, Inc.	28,202	58,200	86,402	74,332	43,000	117,332	94,217	1,054,769	8,300	1,361,020
Total Thoroughbred Tracks	\$395,117	\$306,600	\$701,717	\$439,427	\$301,500	\$740,927	\$1,036,780	\$4,201,151	\$33,400	\$6,713,975
Harness Racing Associations										
Isle Casino and Racing at Pompano Park	\$18,519	\$128,500	\$147,019	\$64,703	\$179,000	\$243,703	\$39,875	\$409,307	\$7,300	\$847,204
Quarter Horse Racing Associations										
Gretna Racing, LLC	\$55	\$23,500	\$23,555	\$0	\$0	\$0	\$0	\$0	\$2,400	\$25,955
Hamilton Downs Horsetrack, LLC	1	32,000	32,001	0	0	0	0	0	0	32,001
Ocala Breeders' Sales Company, Inc.	49	200	249	0	0	0	0	0	0	249
South Florida Racing Association, LLC (Hialeah Park)	12,448	26,000	38,448	0	0	0	3,658	0	0	42,106
South Marion Real Estate Holdings, LLC	1	200	201	0	0	0	0	0	0	201
Total Quarter Horse Tracks	\$12,554	\$81,900	\$94,454	\$0	\$0	\$0	\$3,658	\$0	\$2,400	\$100,512
TOTAL FOR ALL TRACKS AND FRONTONS	\$1,301,694	\$1,535,618	\$2,837,312	\$616,074	\$557,572	\$1,173,646	\$2,128,716	\$5,069,471	\$267,500	\$11,476,645

(A) The amounts shown are taxes and fees collected after the application of any applicable tax credits, and do not include admissions tax.

TOTAL REGULAR AND CHARITY/SCHOLARSHIP HANDLE

Fiscal Year 2012/2013

Greyhound Racing Associations

	ON-TRACK		INTERTRACK		TOTAL REGULAR HANDLE
	Live	Simulcast	ITW	ITWS	
Daytona Beach Kennel Club, Inc.	\$2,973,602	\$1,004,293	\$3,672,877	\$0	\$7,650,772
Derby Lane (St. Petersburg Kennel Club, Inc.)	10,903,061	0	13,152,145	0	24,055,206
Ebro Greyhound Park	1,630,644	0	0	0	1,630,644
Flagler Dog Track	1,927,850	1,799,644	4,110,421	10,534,608	18,372,523
H&T Gaming, Inc., d/b/a Mardi Gras Racetrack	1,294,948	2,203,458	2,008,827	4,427,589	9,934,822
Jacksonville Kennel Club, Inc.	3,506,999	0	8,297,425	0	11,804,424
Jefferson County Kennel Club, Inc.	212,248	0	0	0	212,248
License Acquisitions, LLC,d/b/a Palm Beach Greyhound Racing	4,079,121	0	8,776,312	0	12,855,433
Mardi Gras Racetrack and Gaming Center	1,366,072	1,334,833	2,035,158	2,860,478	7,596,541
Melbourne Greyhound Park, LLC	116,456	0	0	0	116,456
Naples-Ft. Myers Greyhound Track	9,294,167	0	9,537,132	0	18,831,299
Orange Park Kennel Club, Inc.	2,940,707	0	7,071,923	0	10,012,630
Palm Beach Kennel Club	15,760,430	0	29,479,001	0	45,239,431
Penn Sanford, LLC, d/b/a Sanford-Orlando Kennel Club	3,180,194	0	2,786,272	0	5,966,466
Pensacola Greyhound Racing, LLP	1,308,949	0	0	0	1,308,949
SOKC, LLC, d/b/a Sanford-Orlando Kennel Club	4,703,724	0	3,598,464	0	8,302,188
Sarasota Kennel Club, Inc.	5,044,398	0	1,837,276	0	6,881,674
St. Johns Greyhound Park	7,058,614	0	14,763,387	0	21,822,001
Tampa Greyhound Track	8,143,826	0	12,884,488	0	21,028,314
West Volusia Racing, Inc.	2,622,079	734,314	2,979,899	0	6,336,292
Total Greyhound Tracks	\$88,068,089	\$7,076,542	\$126,991,007	\$17,822,675	\$239,958,313

Jai Alai Frontons

Dania Jai Alai	\$2,949,714	\$0	\$6,959,648	\$0	\$9,909,362
Dania Summer Jai Alai	1,465,105	0	3,732,485	0	5,197,590
Ft. Pierce Jai Alai	268,058	0	0	0	268,058
Hamilton Jai Alai and Poker	0	0	0	0	0
Miami Jai Alai	2,544,721	0	2,920,781	0	5,465,502
Ocala Poker and Jai Alai	0	0	0	0	0
Orlando Jai Alai	157,576	0	32,837	0	190,413
Summer Jai Alai	1,452,108	0	1,467,914	0	2,920,022
West Flagler Associates, LTD., d/b/a Magic City Jai Alai	869,850	0	1,024,348	0	1,894,198
Total Jai Alai Frontons	\$9,707,132	\$0	\$16,138,013	\$0	\$25,845,145

Thoroughbred Racing Associations

Calder Race Course, Inc.	\$8,692,106	\$24,570,204	\$9,391,317	\$77,870,177	\$120,523,804
Gulfstream Park Racing Association, Inc.	53,741,839	38,102,154	32,440,482	49,815,533	174,100,008
Tampa Bay Downs, Inc.	16,435,720	10,342,074	23,624,872	37,580,041	87,982,707
Tropical Park, Inc.	5,640,324	14,866,437	6,033,147	63,576,373	90,116,281
Total Thoroughbred Tracks	\$84,509,989	\$87,880,869	\$71,489,818	\$228,842,124	\$472,722,800

Harness Racing Associations

Isle Casino and Racing at Pompano Park	\$3,703,720	\$12,940,520	\$1,306,441	\$28,663,552	\$46,614,233
--	-------------	--------------	-------------	--------------	--------------

Quarter Horse Racing Associations

Gretna Racing, LLC	\$5,544	\$0	\$0	\$0	\$5,544
Hamilton Downs Horsetrack, LLC	130	0	0	0	130
Ocala Breeders' Sales Company, Inc.	6,501	0	0	0	6,501
South Florida Racing Association, LLC (Hialeah Park)	1,244,845	0	218,998	0	1,463,843
South Marion Real Estate Holdings, LLC	73	0	0	0	73
Total Quarter Horse Tracks	\$1,257,093	\$0	\$218,998	\$0	\$1,476,091

TOTAL FOR ALL TRACKS AND FRONTONS

\$187,246,023	\$107,897,931	\$216,144,277	\$275,328,351	\$786,616,582
----------------------	----------------------	----------------------	----------------------	----------------------

	ON-TRACK		INTERTRACK		TOTAL CHARITY SCHOLARSHIP HANDLE	TOTAL HANDLE
	Live	Simulcast	ITW	ITWS		
	\$268,787	\$60,074	\$165,447	\$0	\$494,308	\$8,145,080
	1,144,189	0	1,013,521	0	2,157,710	26,212,916
	94,873	0	0	0	94,873	1,725,517
	144,307	83,327	304,488	499,269	1,031,391	19,403,914
	118,590	168,361	190,983	262,342	740,276	10,675,098
	599,565	0	1,090,918	0	1,690,483	13,494,907
	0	0	0	0	0	212,248
	524,470	0	1,091,159	0	1,615,629	14,471,062
	181,518	143,805	263,874	253,722	842,919	8,439,460
	0	0	0	0	0	116,456
	514,935	0	423,409	0	938,344	19,769,643
	494,883	0	964,324	0	1,459,207	11,471,837
	801,921	0	1,101,525	0	1,903,446	47,142,877
	241,007	0	261,339	0	502,346	6,468,812
	0	0	0	0	0	1,308,949
	143,836	0	145,697	0	289,533	8,591,721
	432,014	0	97,409	0	529,423	7,411,097
	597,941	0	1,047,187	0	1,645,128	23,467,129
	769,246	0	965,623	0	1,734,869	22,763,183
	237,014	45,511	179,025	0	461,550	6,797,842
	\$7,309,096	\$501,078	\$9,305,928	\$1,015,333	\$18,131,435	\$258,089,748
	\$26,437	\$0	\$56,662	\$0	\$83,099	\$9,992,461
	18,484	0	49,681	0	68,165	5,265,755
	16,022	0	0	0	16,022	284,080
	0	0	0	0	0	0
	185,837	0	172,930	0	358,767	5,824,269
	0	0	0	0	0	0
	129,237	0	9,972	0	139,209	329,622
	55,765	0	61,302	0	117,067	3,037,089
	23,323	0	22,980	0	46,303	1,940,501
	\$455,105	\$0	\$373,527	\$0	\$828,632	\$26,673,777
	\$1,209,234	\$2,838,006	\$1,184,798	\$14,492,380	\$19,724,418	\$140,248,222
	9,464,924	3,580,550	3,959,033	3,369,119	20,373,626	194,473,634
	2,382,226	702,299	2,921,754	2,414,321	8,420,600	96,403,307
	901,300	2,675,523	936,844	12,904,767	17,418,434	107,534,715
	\$13,957,684	\$9,796,378	\$9,002,429	\$33,180,587	\$65,937,078	\$538,659,878
	\$179,667	\$166,754	\$64,225	\$345,753	\$756,399	\$47,370,632
	\$2,534	\$0	\$0	\$0	\$2,534	\$8,078
	0	0	0	0	0	130
	0	0	0	0	0	6,501
	0	0	0	0	0	1,463,843
	0	0	0	0	0	73
	\$2,534	\$0	\$0	\$0	\$2,534	\$1,478,625
	\$21,904,086	\$10,464,210	\$18,746,109	\$34,541,673	\$85,656,078	\$872,272,660

TOTAL INTERTRACK WAGERING HANDLE BY GUEST

Fiscal Year 2012/2013	HOST PERMITHOLDER										
	GUEST FACILITY	DAYTONA	DERBY LANE	FLAGLER	H&T GAMING	JACKSONVILLE	LICENSE ACQUISITIONS	MARDI GRAS	NAPLES-FT. MYERS	ORANGE PARK	PALM BEACH
Greyhound Permitholders											
Daytona Beach Kennel Club, Inc.	\$0	\$253,801	\$241,146	\$35,918	\$486,219	\$444,854	\$0	\$61,890	\$202,496	\$509,952	
Derby Lane (St. Petersburg Kennel Club, Inc.)	370,110	0	327,886	239,211	710,090	998,459	226,709	963,135	635,792	3,290,602	
Ebro Greyhound Park	0	595,363	0	0	105,012	236,107	0	0	200,791	678,968	
Flagler Dog Track	148,627	617,386	0	1,155,076	315,598	799,846	840,021	1,301,945	311,201	2,129,190	
H&T Gaming, Inc., d/b/a Mardi Gras Racetrack	426,417	526,483	4,767,844	0	394,936	556,218	0	586,057	312,512	1,279,938	
Jacksonville Kennel Club, Inc.	318,021	764,240	1,457,128	903,739	1,205,716	543,807	599,136	550,229	1,036,230	1,879,902	
Jefferson County Kennel Club, Inc.	0	3,054	0	0	263,768	0	0	0	256,341	0	
License Acquisitions, LLC, d/b/a Palm Beach Greyhound Racing	125,558	0	168,888	0	450,887	0	0	0	161,779	0	
Mardi Gras Racetrack and Gaming Center	0	170,504	0	0	0	0	0	296,802	37,348	452,308	
Melbourne Greyhound Park, LLC	80,876	299,160	534,093	242,340	186,564	356,999	161,003	209,210	174,263	1,112,992	
Naples-Ft. Myers Greyhound Track	102,171	475,449	933,543	261,863	214,400	463,974	266,234	0	190,541	1,355,611	
Orange Park Kennel Club, Inc.	508,957	1,468,026	1,665,489	1,203,180	0	777,801	874,191	987,053	0	2,792,034	
Palm Beach Kennel Club	156,972	1,009,979	111,456	177,270	291,679	0	213,697	832,304	436,671	0	
Penn Sanford, LLC, d/b/a Sanford-Orlando Kennel Club	177,466	0	1,632,246	0	349,127	713,657	345,739	232,994	532,110	771,330	
Pensacola Greyhound Racing, LLP	336,025	0	151,664	0	1,320,496	212,867	0	240,570	1,096,544	564,957	
SOKC, LLC, d/b/a Sanford-Orlando Kennel Club	106,920	1,099,834	367,196	1,061,934	227,840	7,159	487,928	579,096	0	1,682,533	
Sarasota Kennel Club, Inc.	141,381	1,314,506	620,082	309,611	394,845	694,697	210,844	577,314	340,603	1,975,599	
St. Johns Greyhound Park	72,791	0	313,772	0	214,692	294,186	0	14,491	230,152	149,522	
Tampa Greyhound Track	346,891	2,697,935	443,716	233,707	679,952	1,010,440	239,358	900,195	581,373	2,648,750	
West Volusia Racing, Inc.	0	371,589	13,803	176,204	0	0	117,166	311,033	128,805	832,031	
Total Greyhound Permitholders	\$3,419,183	\$11,667,309	\$13,749,952	\$6,000,053	\$7,811,821	\$8,111,071	\$4,582,026	\$8,644,318	\$6,865,552	\$24,106,219	
Jai Alai Permitholders											
Dania Jai Alai	\$36,367	\$0	\$171,101	\$556,392	\$30,256	\$4,318	\$486,577	\$266,980	\$6,849	\$415,534	
Dania Summer Jai Alai	81,295	0	1,004,674	0	60,597	153,088	0	35,387	63,503	101,912	
Ft. Pierce Jai Alai	99,191	285,759	116,898	82,038	199,105	352,970	86,793	297,497	161,425	1,182,457	
Hamilton Jai Alai and Poker	0	385,016	70,760	0	223,723	83,914	0	149,944	201,977	318,837	
Miami Jai Alai	0	0	0	0	0	0	0	0	0	0	
Ocala Poker and Jai Alai	97,339	300,510	65,615	53,307	197,811	173,554	44,369	168,816	144,541	516,621	
Orlando Jai Alai	0	0	0	0	0	0	0	0	0	0	
Summer Jai Alai	0	0	0	0	0	0	0	0	0	0	
West Flagler Associates, LTD., d/b/a Magic City Jai Alai	0	0	0	0	0	0	0	0	0	0	
Total Jai Alai Permitholders	\$314,192	\$971,285	\$1,429,048	\$691,737	\$711,492	\$767,844	\$617,739	\$918,624	\$578,295	\$2,535,361	
Thoroughbred Permitholders											
Calder Race Course, Inc.	\$0	\$0	\$0	\$0	\$0	\$0	\$0	\$0	\$0	\$0	
Gulfstream Park Racing Association, Inc.	0	0	0	0	0	0	0	0	0	0	
Tampa Bay Downs, Inc.	0	1,294,175	0	0	250,682	295,673	0	0	220,040	962,743	
Tropical Park, Inc.	0	0	0	0	0	0	0	0	0	0	
Total Thoroughbred Permitholders	\$0	\$1,294,175	\$0	\$0	\$250,682	\$295,673	\$0	\$0	\$220,040	\$962,743	
Harness Permitholders											
Isle Casino and Racing at Pompano Park	\$0	\$0	\$199,129	\$194,494	\$286,774	\$511,447	\$213,467	\$173,412	\$279,055	\$1,729,101	
Quarter Horse Permitholders											
Gretna Racing, LLC	\$104,949	\$0	\$70,657	\$0	\$222,287	\$0	\$0	\$224,187	\$8,383	\$667,826	
Hamilton Downs Horsetrack, LLC	0	0	0	0	0	0	0	0	0	0	
Ocala Breeders' Sales Company Inc.	0	232,897	0	3,457	105,287	181,436	0	0	84,922	579,276	
South Florida Racing Association, LLC (Hialeah Park)	0	0	0	0	0	0	0	0	0	0	
South Marion Real Estate Holdings, LLC	0	0	0	0	0	0	0	0	0	0	
Total Quarter Horse Permitholders	\$104,949	\$232,897	\$70,657	\$3,457	\$327,574	\$181,436	\$0	\$224,187	\$93,305	\$1,247,102	
TOTAL FOR ALL PERMITHOLDERS	\$3,838,324	\$14,165,666	\$15,448,786	\$6,889,741	\$9,388,343	\$9,867,471	\$5,413,232	\$9,960,541	\$8,036,247	\$30,580,526	

CONTINUED ON NEXT PAGE

Note: Figures above include handle from charity/scholarship performances.

TOTAL INTERTRACK WAGERING HANDLE BY GUEST

Fiscal Year 2012/2013	HOST PERMITHOLDER										
	Penn Sanford	SOKC, LLC	SARASOTA	ST. JOHNS	TAMPA GREYHOUND	WEST VOLUSIA RACING	DANIA	MAGIC CITY	MIAMI	ORLANDO	SUMMER
GUEST FACILITY											
Greyhound Permitholders											
Daytona Beach Kennel Club, Inc.	\$140,265	\$92,749	\$6,969	\$167,816	\$377,494	\$0	\$79,459	\$48,353	\$13,659	\$0	\$74,252
Derby Lane (St. Petersburg Kennel Club, Inc.)	281,539	339,258	301,152	1,222,979	0	306,593	415,674	94,954	300,892	0	169,421
Ebro Greyhound Park	0	0	143,398	369,783	678,654	0	91,141	0	0	0	0
Flagler Dog Track	102,739	103,746	98,052	528,702	609,690	112,560	0	0	0	0	0
H&T Gaming, Inc., d/b/a Mardi Gras Racetrack	264,982	333,605	153,315	441,423	509,399	235,704	153,746	0	0	0	0
Jacksonville Kennel Club, Inc.	263,829	360,497	141,377	2,097,904	740,803	262,260	230,552	54,203	132,689	3,817	54,466
Jefferson County Kennel Club, Inc.	0	0	0	0	677,241	0	9,323	0	0	0	0
License Acquisitions, LLC, d/b/a Palm Beach Greyhound Racing	207,304	0	0	0	432,639	0	0	0	0	0	83,250
Mardi Gras Racetrack and Gaming Center	35,810	104,335	98,219	250,896	98,257	161,640	98,978	0	0	0	0
Melbourne Greyhound Park, LLC	93,865	139,363	64,749	291,187	286,706	61,493	541,407	114,307	306,078	8,294	182,763
Naples-Ft. Myers Greyhound Track	75,880	91,645	110,350	341,451	465,628	90,878	0	0	0	0	0
Orange Park Kennel Club, Inc.	385,073	519,194	190,383	0	1,313,330	451,586	225,979	59,604	152,004	0	52,740
Palm Beach Kennel Club	159,336	431,305	127,498	1,243,902	383,965	275,305	477,517	78,702	262,822	0	39,266
Penn Sanford, LLC, d/b/a Sanford-Orlando Kennel Club	0	0	39,574	119,716	941,222	79,149	0	0	0	0	0
Pensacola Greyhound Racing, LLP	66,688	119,957	21,073	2,178,458	0	201,863	23,787	0	0	0	0
SOKC, LLC, d/b/a Sanford-Orlando Kennel Club	0	0	84,704	935,306	0	165,182	8,498	0	0	0	0
Sarasota Kennel Club, Inc.	240,429	187,659	0	680,293	1,287,673	116,229	0	0	0	3,621	0
St. Johns Greyhound Park	69,963	0	0	0	169,861	6,924	0	0	5,350	73	20,446
Tampa Greyhound Track	364,018	467,227	276,242	1,031,069	2,637,529	259,014	368,675	83,397	266,383	0	127,119
West Volusia Racing, Inc.	58,638	142,515	77,630	577,068	177,289	0	144,760	0	130,563	0	0
Total Greyhound Permitholders	\$2,810,358	\$3,433,055	\$1,934,685	\$12,477,953	\$11,787,380	\$2,786,380	\$2,869,496	\$533,520	\$1,570,440	\$15,805	\$803,723
Jai Alai Permitholders											
Dania Jai Alai	\$0	\$0	\$0	\$125,975	\$0	\$92,294	\$0	\$107,492	\$305,943	\$10,187	\$0
Dania Summer Jai Alai	0	0	0	0	0	12,702	0	0	59,584	8,393	174,222
Ft. Pierce Jai Alai	0	0	0	359,837	216,025	81,591	221,034	96,876	242,491	1,509	130,168
Hamilton Jai Alai and Poker	0	0	0	432,025	260,050	0	4,931	0	0	0	0
Miami Jai Alai	0	0	0	0	0	0	981,272	0	0	0	0
Ocala Poker and Jai Alai	87,525	99,917	0	262,293	256,225	64,575	218,021	48,680	95,083	522	56,307
Orlando Jai Alai	0	0	0	0	0	0	982,920	169,551	548,742	0	230,667
Summer Jai Alai	0	0	0	0	0	0	359,530	0	0	0	0
West Flagler Associates, LTD., d/b/a Magic City Jai Alai	0	0	0	0	0	0	0	0	0	0	0
Total Jai Alai Permitholders	\$87,525	\$99,917	\$0	\$1,180,130	\$732,300	\$251,162	\$2,767,708	\$422,599	\$1,251,843	\$20,611	\$591,364
Thoroughbred Permitholders											
Calder Race Course, Inc.	\$0	\$0	\$0	\$0	\$0	\$0	\$0	\$0	\$0	\$0	\$0
Gulfstream Park Racing Association, Inc.	0	0	0	0	0	0	0	0	0	0	0
Tampa Bay Downs, Inc.	149,728	211,189	0	450,643	1,149,546	0	255,571	69,229	210,619	6,393	92,783
Tropical Park, Inc.	0	0	0	0	0	0	0	0	0	0	0
Total Thoroughbred Permitholders	\$149,728	\$211,189	\$0	\$450,643	\$1,149,546	\$0	\$255,571	\$69,229	\$210,619	\$6,393	\$92,783
Harness Permitholders											
Isle Casino and Racing at Pompano Park	\$0	\$0	\$0	\$523,859	\$122	\$0	\$965,100		\$0	\$0	\$0
Quarter Horse Permitholders											
Gretna Racing, LLC	\$0	\$0	\$0	\$976,358	\$0	\$121,382	\$48,940	\$0	\$0	\$0	\$0
Hamilton Downs Horsetrack, LLC	0	0	0	0	0	0	0	0	0	0	0
Ocala Breeders' Sales Company Inc.	0	0	0	201,631	180,763	0	109,495	21,980	60,809	0	41,346
South Florida Racing Association, LLC (Hialeah Park)	0	0	0	0	0	0	0	0	0	0	0
South Marion Real Estate Holdings, LLC	0	0	0	0	0	0	0	0	0	0	0
Total Quarter Horse Permitholders	\$0	\$0	\$0	\$1,177,989	\$180,763	\$121,382	\$158,435	\$21,980	\$60,809	\$0	\$41,346
TOTAL FOR ALL PERMITHOLDERS	\$3,047,611	\$3,744,161	\$1,934,685	\$15,810,574	\$13,850,111	\$3,158,924	\$7,016,310	\$1,047,328	\$3,093,711	\$42,809	\$1,529,216

CONTINUED ON NEXT PAGE

Note: Figures above include handle from charity/scholarship performances.

TOTAL INTERTRACK WAGERING HANDLE BY GUEST

Fiscal Year 2012/2013	HOST PERMITHOLDER							TOTAL
	GUEST FACILITY	SUMMERSPORT	CALDER	GULFSTREAM PARK	TAMPA BAY DOWNS	TROPICAL PARK	POMPAÑO PARK	
Greyhound Permiholders								
Daytona Beach Kennel Club, Inc.	\$92,708	\$3,399,490	\$316,368	\$75,125	\$1,578,823	\$877,816	\$0	9,577,622
Derby Lane (St. Petersburg Kennel Club, Inc.)	232,166	4,245,924	2,657,776	7,791,595	4,163,909	1,890,105	26,773	32,202,704
Ebro Greyhound Park	52,328	923,284	573,850	818,814	651,592	0	0	6,119,085
Flagler Dog Track	0	1,257,375	1,283,020	0	682,845	1,488,965	0	13,886,584
H&T Gaming, Inc., d/b/a Mardi Gras Racetrack	140,394	636,421	273,987	0	353,005	2,205,337	0	14,551,723
Jacksonville Kennel Club, Inc.	101,357	1,564,678	1,070,785	3,146,063	1,523,822	951,023	0	21,958,273
Jefferson County Kennel Club, Inc.	38,418	0	6,815	0	0	0	0	1,254,960
License Acquisitions, LLC, d/b/a Palm Beach Greyhound Racing	129,091	7,201,067	0	0	2,919,036	1,085,313	0	12,964,812
Mardi Gras Racetrack and Gaming Center	0	0	304,046	0	0	668,672	0	2,777,815
Melbourne Greyhound Park, LLC	335,169	2,868,103	2,331,255	4,675,353	2,548,452	745,368	27,062	18,978,474
Naples-Ft. Myers Greyhound Track	0	6,805,348	8,997,060	2,000,305	4,253,352	1,458,325	0	28,954,008
Orange Park Kennel Club, Inc.	91,947	1,818,777	1,443,254	3,849,679	1,485,993	121,816	0	22,438,090
Palm Beach Kennel Club	126,072	12,020,827	17,884,379	3,576,597	7,946,225	4,017,658	0	52,281,404
Penn Sanford, LLC, d/b/a Sanford-Orlando Kennel Club	0	1,866,835	348,759	717,982	2,652,421	769,942	0	12,290,269
Pensacola Greyhound Racing, LLP	0	365,386	419,645	190,310	163,850	0	0	7,674,140
SOKC, LLC, d/b/a Sanford-Orlando Kennel Club	0	974,843	1,585,470	4,704,039	0	857,411	0	14,935,893
Sarasota Kennel Club, Inc.	0	3,245,111	2,077,971	5,266,494	2,877,340	943,973	0	23,506,275
St. Johns Greyhound Park	26,592	987,584	0	0	1,070,000	115,257	0	3,761,656
Tampa Greyhound Track	201,520	3,047,462	1,736,761	5,449,806	3,160,995	1,590,762	21,363	30,871,659
West Volusia Racing, Inc.	23,989	402,270	2,997,152	640,383	589,450	867,399	17,069	8,796,806
Total Greyhound Permiholders	\$1,591,751	\$53,630,785	\$46,308,353	\$42,902,545	\$38,621,110	\$20,655,142	\$92,267	\$339,782,252
Jai Alai Permiholders								
Dania Jai Alai	\$0	\$298,323	\$437,248	\$40,306	\$0	\$1,192,254	\$0	\$4,584,396
Dania Summer Jai Alai	0	284,153	0	0	282,510	798,454	0	3,120,474
Ft. Pierce Jai Alai	135,720	1,584,051	1,316,369	2,806,303	1,279,969	0	0	11,336,076
Hamilton Jai Alai and Poker	0	1,898	212,979	108,574	0	5,118	0	2,459,746
Miami Jai Alai	175,771	0	0	0	0	6,688	0	1,163,731
Ocala Poker and Jai Alai	84,453	1,090,443	1,235,226	265,077	567,238	257,468	0	6,451,536
Orlando Jai Alai	458,047	3,889,415	2,344,761	6,820,841	4,004,818	3,090,197	0	22,539,959
Summer Jai Alai	678,988	0	0	0	0	0	0	1,038,518
West Flagler Associates, LTD., d/b/a Magic City Jai Alai	0	0	0	0	0	0	0	0
Total Jai Alai Permiholders	\$1,532,979	\$7,148,283	\$5,546,583	\$10,041,101	\$6,134,535	\$5,350,179	\$0	\$52,694,436
Thoroughbred Permiholders								
Calder Race Course, Inc.	\$0	\$0	\$2,339,800	\$1,234,277	\$0	\$151,236	\$0	\$3,725,313
Gulfstream Park Racing Association, Inc.	0	23,999,079	0	6,595,277	24,940,523	1,647,268	0	57,182,147
Tampa Bay Downs, Inc.	141,664	7,232,660	5,863,579	0	7,200,941	1,874,203	0	27,932,061
Tropical Park, Inc.	0	0	18,993,582	2,620,056	0	129,457	0	21,743,095
Total Thoroughbred Permiholders	\$141,664	\$31,231,739	\$27,196,961	\$10,449,610	\$32,141,464	\$3,802,164	\$0	\$110,582,616
Harness Permiholders								
Isle Casino and Racing at Pompano Park	\$467,095	\$6,990,461	\$1,602,335	\$183,165	\$3,507,444	\$0	\$126,731	\$17,953,191
Quarter Horse Permiholders								
Gretna Racing, LLC	\$0	\$174,562	\$267,950	\$0	\$0	\$0	\$0	\$2,887,481
Hamilton Downs Horsetrack, LLC	0	0	0	2,308	0	0	0	2,308
Ocala Breeders' Sales Company Inc.	48,677	3,762,842	6,385,342	2,598,714	3,046,578	572,486	0	18,217,938
South Florida Racing Association, LLC (Hialeah Park)	0	0	2,276,643	363,545	0	0	0	2,640,188
South Marion Real Estate Holdings, LLC	0	0	0	0	0	0	0	0
Total Quarter Horse Permiholders	\$48,677	\$3,937,404	\$8,929,935	\$2,964,567	\$3,046,578	\$572,486	\$0	\$23,747,915
TOTAL FOR ALL PERMITHOLDERS	\$3,782,166	\$102,938,672	\$89,584,167	\$66,540,988	\$83,451,131	\$30,379,971	\$218,998	\$544,760,410

CONTINUED FROM PREVIOUS PAGE

Note: Figures above include handle from charity/scholarship performances.

CHARITY AND SCHOLARSHIP PERFORMANCES

Each permitholder may operate up to five additional days designated as charity or scholarship days during their regular meet. Proceeds from these additional days are paid to approved charities, major state and private institutions of higher learning, community colleges, the Historical Resources Operating Trust Fund, and the Racing Scholarship Trust Fund (Board of Governors Operations and Maintenance Trust Fund). A list of proposed recipients is submitted annually by the permitholder to the division. Typically, the amount contributed to charitable organizations is determined by calculating the amount of taxes due to the state had it been a regular performance. A minimum of \$1,963,042 was paid to charitable organizations during Fiscal Year 2012/2013, bringing the total proceeds disbursed since 1985 to \$74,962,865.

RACING SCHOLARSHIP TRUST FUND

The Board of Governors, within the Department of Education, oversees the Board of Governors Operations and Maintenance Trust Fund and that the referenced contributions are used to provide scholarships to deserving students attending Florida's colleges and universities. A total of \$16,884,374 has been paid to this fund since the program began in 1949. The amount contributed to the fund this fiscal year is detailed below.

Racing Scholarship Trust Fund	
Washington County Kennel Club, Inc.	\$1,408
Total For 2012/2013 Fiscal Year	\$1,408

ABANDONED WINNING TICKETS

Abandoned pari-mutuel tickets are winning tickets that remain uncashed for a period of one year. The value of greyhound and jai alai abandoned tickets for live on-track races or games escheat to the state. These funds are deposited into the Department of Education's State School Trust Fund for the support and maintenance of Florida's public schools. Since 1957, the total paid into this fund is \$93,897,580. The amount collected in abandoned winning tickets for the State School Trust Fund for this fiscal year is detailed below.

Abandoned Winning Tickets	
Greyhound Permitholders	\$788,514
Jai Alai Permitholders	\$53,539
Total For 2012/2013 Fiscal Year	\$842,053

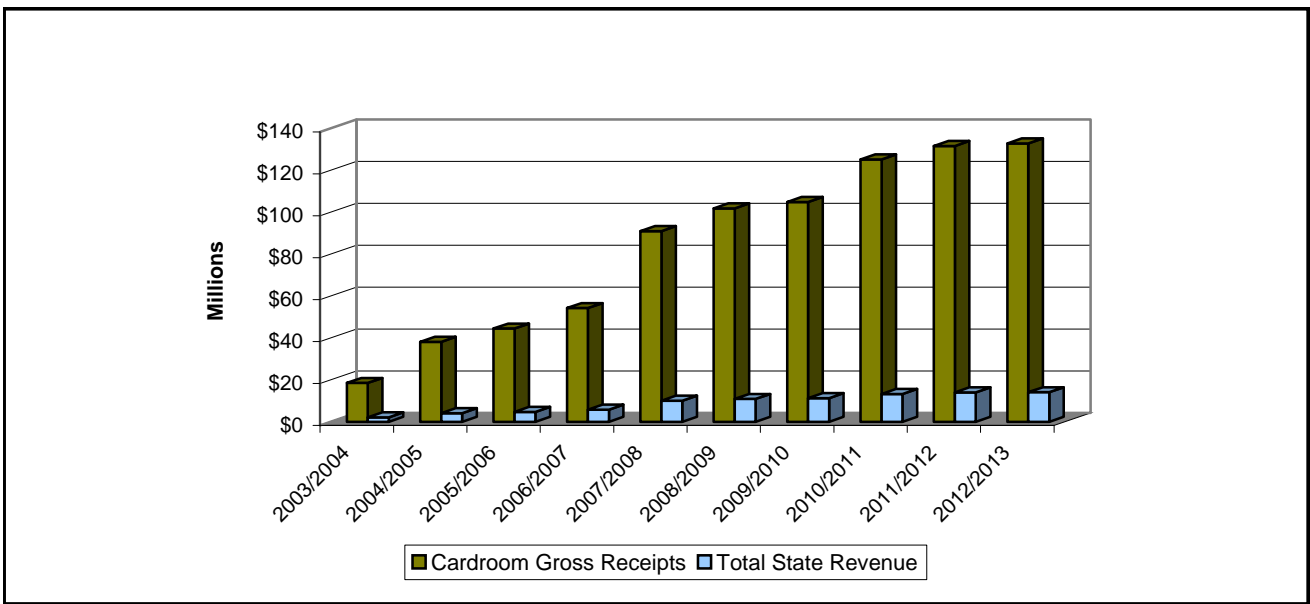
In harness and quarter horse racing, abandoned winning tickets are paid to the respective breeders' associations. Abandoned winning tickets from thoroughbred horse racing are retained by the permitholder.

CARDROOM COMPARATIVE DATA

During Fiscal Year 2012/2013, there were 25 licensed cardroom permitholders but only 24 that operated at 24 pari-mutuel facilities. The number of cardroom tables decreased from 834 in Fiscal Year 2011/2012, to 810 in Fiscal Year 2012/2013. Cardroom gross receipts increased from \$131,447,663, to \$132,690,415, and the gross receipts tax increased from \$13,144,767 to \$13,269,045 this fiscal year. Table fees decreased from \$834,000 to \$810,000 this fiscal year. The overall result was an increase in total state revenue from \$13,978,767 to \$14,079,045 this fiscal year.

Cardroom tax revenue is distributed 50 percent between the Pari-Mutuel Wagering Trust Fund and the General Revenue Fund. In accordance with Section 849.086(13)(h), Florida Statutes, one quarter of the moneys deposited into the Pari-Mutuel Wagering Trust Fund must be distributed to counties and municipalities that approved the cardroom. In October 2013, the division distributed approximately \$1,658,542 to the counties/municipalities from cardroom gross receipts.

CARDROOM GROSS RECEIPTS AND TOTAL STATE REVENUE FISCAL YEARS 2003/2004 THROUGH 2012/2013



CARDROOM GROSS RECEIPTS AND STATE REVENUE SUMMARY

Fiscal Year	Total Cardroom Gross Receipts	Gross Receipts Tax	Table Fees Collected ^(A)	Total State Revenue (Gross Receipts Tax plus Table Fees)	Total State Revenue as a Percent of Gross Receipts
2003/2004	\$18,498,426	\$1,849,843	\$250,500	\$2,100,343	11.35%
2004/2005	\$38,089,764	\$3,808,977	\$238,000	\$4,046,977	10.62%
2005/2006	\$44,433,359	\$4,443,337	\$264,000	\$4,707,337	10.59%
2006/2007	\$54,208,544	\$5,420,855	\$325,500	\$5,746,355	10.60%
2007/2008	\$90,863,855	\$9,086,385	\$875,000	\$9,961,385	10.96%
2008/2009	\$101,700,243	\$10,170,024	\$698,000	\$10,868,024	10.69%
2009/2010	\$104,799,448	\$10,479,945	\$749,000	\$11,228,945	10.71%
2010/2011	\$125,141,080	\$12,514,108	\$718,000	\$13,232,108	10.57%
2011/2012	\$131,447,663	\$13,144,767	\$834,000	\$13,978,767	10.63%
2012/2013	\$132,690,415	\$13,269,045	\$810,000	\$14,079,045	10.61%

(A) Amount agrees with the number of approved cardroom tables per annual cardroom licenses, and reflects the number of tables in operation each fiscal year.

Note: Changes to Total Cardroom Gross Receipts and Gross Receipts Tax for Fiscal Year 2011/2012 is due to two refunds.

COMPONENTS OF CARDROOM REVENUE BY ASSOCIATION

Fiscal Year 2012/2013

Greyhound Racing Associations

County/ Municipality	Gross Receipts	Tournament Gross Receipts	Total Gross Receipts	Gross Receipts Tax ^(A)	Table Fees Collected	Total Taxes and Fees	
Daytona Beach Kennel Club, Inc./West Volusia Racing, Inc.	Volusia	\$9,779,392	\$633,680	\$10,413,072	\$1,041,307	\$55,000	\$1,096,307
Derby Lane (St. Petersburg Kennel Club, Inc.)	Pinellas	7,938,803	767,955	8,706,758	870,676	55,000	925,676
Ebro Greyhound Park	Washington	3,369,287	144,480	3,513,767	351,377	25,000	376,377
Flagler Dog Track	Dade	7,571,713	13,410	7,585,123	758,512	20,000	778,512
Jacksonville Kennel Club, Inc.	Duval	13,652,297	963,863	14,616,160	1,461,616	70,000	1,531,616
Jefferson County Kennel Club, Inc.	Jefferson	0	0	0	0	1,000	1,000
Mardi Gras Racetrack and Gaming Center/H & T Gaming, Inc.	Hallandale	5,080,986	46,125	5,127,111	512,711	30,000	542,711
Melbourne Greyhound Park, LLC	Brevard	3,835,709	220,590	4,056,299	405,630	43,000	448,630
Naples-Ft. Myers Greyhound Track	Lee	6,157,209	457,240	6,614,449	661,445	30,000	691,445
Orange Park Kennel Club, Inc.	Town of Orange Park	6,433,140	26,480	6,459,620	645,962	39,000	684,962
Palm Beach Kennel Club/License Acquisitions, LLC	Palm Beach	12,181,280	999,460	13,180,740	1,318,076	86,000	1,404,076
Pensacola Greyhound Racing, LLP	Escambia	3,576,856	428,040	4,004,896	400,490	20,000	420,490
Sarasota Kennel Club, Inc.	Sarasota	4,517,011	522,035	5,039,046	503,905	35,000	538,905
St. Johns Greyhound Park	St. Johns	482,760	5,965	488,725	48,873	1,000	49,873
Tampa Greyhound Track	Hillsborough	2,143,875	114,959	2,258,834	225,883	19,000	244,883

Total Greyhound Permitholders

\$86,720,318 \$5,344,282 \$92,064,600 \$9,206,463 \$529,000 \$9,735,463

Jai Alai Permitholders

Dania Jai Alai/Summersport Enterprises, LLC	Hallandale	\$296,541	\$454,182	\$750,723	\$75,072	\$26,000	\$101,072
Ft. Pierce Jai Alai	St. Lucie	2,580,948	120,180	2,701,128	270,113	40,000	310,113
Hamilton Jai Alai and Poker	Hamilton	564,568	0	564,568	56,457	4,000	60,457
Miami/SummerJai Alai	Dade	4,483,371	131,747	4,615,118	461,512	46,000	507,512
Ocala Poker and Jai Alai	Marion	3,546,621	85,020	3,631,641	363,164	21,000	384,164

Total Jai Alai Permitholders

\$11,472,049 \$791,129 \$12,263,178 \$1,226,318 \$137,000 \$1,363,318

Thoroughbred Racing Associations

Calder Race Course, Inc./Tropical Park, Inc.	Dade	\$3,806,374	\$167,743	\$3,974,117	\$397,412	\$29,000	\$426,412
Gulfstream Park Racing Association, Inc.	Broward	4,985,850	131,562	5,117,412	511,741	21,000	532,741
Tampa Bay Downs, Inc.	Hillsborough	3,761,256	648,257	4,409,513	440,951	26,000	466,951

Total Thoroughbred Permitholders

\$12,553,480 \$947,562 \$13,501,042 \$1,350,104 \$76,000 \$1,426,104

Harness Racing Associations

Isle Casino and Racing at Pompano Park	Broward	\$11,274,656	\$1,509,801	\$12,784,457	\$1,278,446	\$48,000	\$1,326,446
--	---------	--------------	-------------	--------------	-------------	----------	-------------

Quarter Horse Racing Associations

Gretna Racing, LLC	Gadsden	\$1,913,960	\$163,178	\$2,077,138	\$207,714	\$18,000	\$225,714
South Florida Racing Association, LLC (Hialeah Park)	Dade	0	0	0	0	26,000	26,000

Total Quarter Horse Permitholders

\$1,913,960 \$163,178 \$2,077,138 \$207,714 \$44,000 \$251,714

TOTAL FOR ALL PERMITHOLDERS

\$123,934,463 \$8,755,952 \$132,690,415 \$13,269,045 \$834,000 \$14,103,045

(A) 1/8th of total gross receipts tax is distributed to counties or municipalities by October 1, of the following year.

SLOT COMPARATIVE DATA

During Fiscal Year 2012/2013, the total amount wagered by patrons was \$6,690,513,855. Average daily revenue per slot machine was \$186. Total net slot revenue was \$435,815,030. As a result the total taxes paid to the state was \$152,535,260, an increase of six percent in total paid slot taxes from the previous fiscal year. A total of 18 million was collected in annual fees, including the Compulsive /Addictive Gambling Fee, for detail regarding this see the Summary of State Revenue From Pari-Mutuel, Cardroom, Slot Activity, and Indian Gaming Compact (page 36) of this report. Hialeah Park was issued a license for slot machine operations for Fiscal Year 2012/2013, but the first day of operation for their slot facility was not until August 14, 2013.

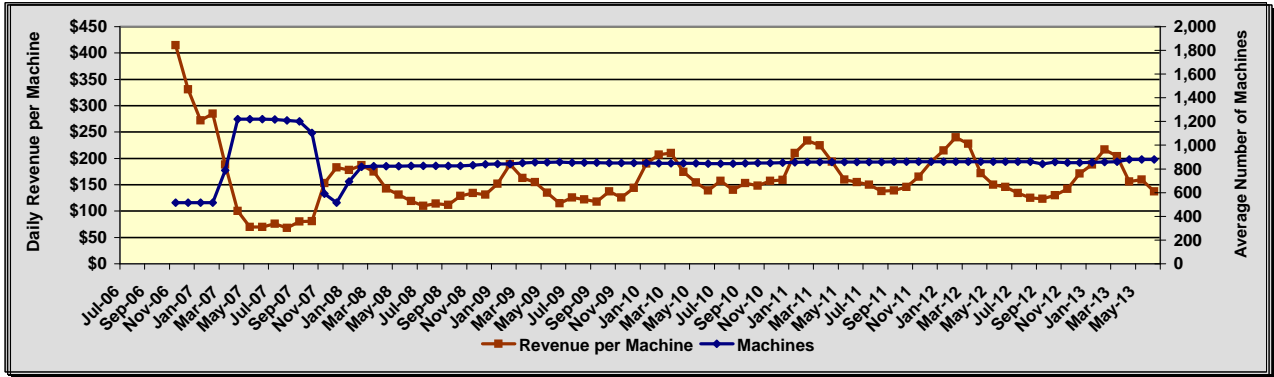
HISTORICAL SLOT FACILITY ACTIVITY		
Fiscal Year	Total Amount Wagered	Total State Revenue
2006/2007	\$1,114,108,466	\$49,620,582
2007/2008	\$3,023,981,126	\$120,560,316
2008/2009	\$2,701,341,777	\$103,895,349
2009/2010	\$3,840,468,455	\$138,125,105
2010/2011	\$5,054,297,731	\$125,063,886
2011/2012	\$6,045,620,380	\$143,962,922
2012/2013	\$6,690,513,855	\$152,535,260

FISCAL YEAR 2012/2013							
	Gulfstream Operations Began 11/15/2006	Mardi Gras Operations Began 12/28/2006	Pompano Park Operations Began 4/14/2007	West Flagler Operations Began 10/15/2009	Calder Operations Began 1/22/2010	Miami Jai Alai Operations Began 1/23/2012	TOTAL
Average Number of Machines	854	1,046	1,444	799	1,206	1,053	6,402
Number of Operating Days	358	365	365	365	365	365	365
Average Daily Revenue per Machine	\$159	\$135	\$238	\$260	\$165	\$162	\$186
Amount Wagered	\$729,424,032	\$767,294,597	\$2,018,017,395	\$1,235,881,272	\$994,146,299	\$945,750,260	\$6,690,513,855
Amount Won By Patrons	\$670,493,824	\$705,531,682	\$1,874,161,638	\$1,158,138,653	\$905,500,819	\$875,357,682	\$6,189,184,298
Promotional Credits	\$10,321,560	\$10,338,041	\$18,680,859	\$2,129,550	\$16,200,352	\$8,268,614	\$65,938,976
30-Day Unclaimed Tickets	\$56,480	\$38,774	\$137,256	\$66,129	\$38,858	\$86,953	\$424,450
Net Slot Machine Revenue	\$48,665,128	\$51,463,648	\$125,312,154	\$75,679,198	\$72,483,985	\$62,210,917	\$435,815,030
⁽¹⁾ State Tax Revenue	\$17,032,795	\$18,012,277	\$43,859,254	\$26,487,719	\$25,369,394	\$21,773,821	\$152,535,260
Permitter Revenue	\$31,632,333	\$33,451,371	\$81,452,900	\$49,191,479	\$47,114,591	\$40,437,096	\$283,279,770
Total State Revenue as a Percent of Amount Wagered	2.34%	2.35%	2.17%	2.14%	2.55%	2.30%	2.28%

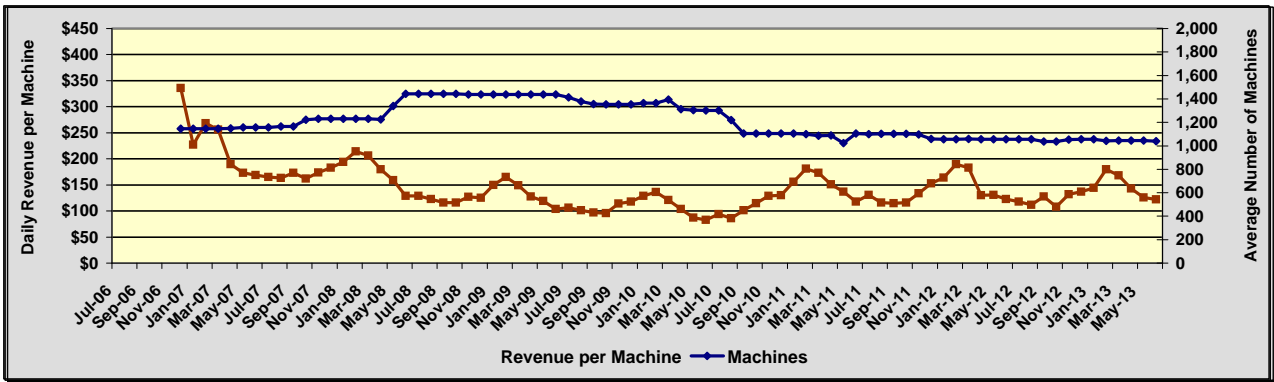
⁽¹⁾ Taxes paid on net slot machine revenue were accounted for by the division, then immediately transferred to the Department of Education's Educational Enhancement Trust Fund.

Daily Revenue per Machine Compared to Average Number of Machines For Fiscal Years 2006/2007 - 2012/2013

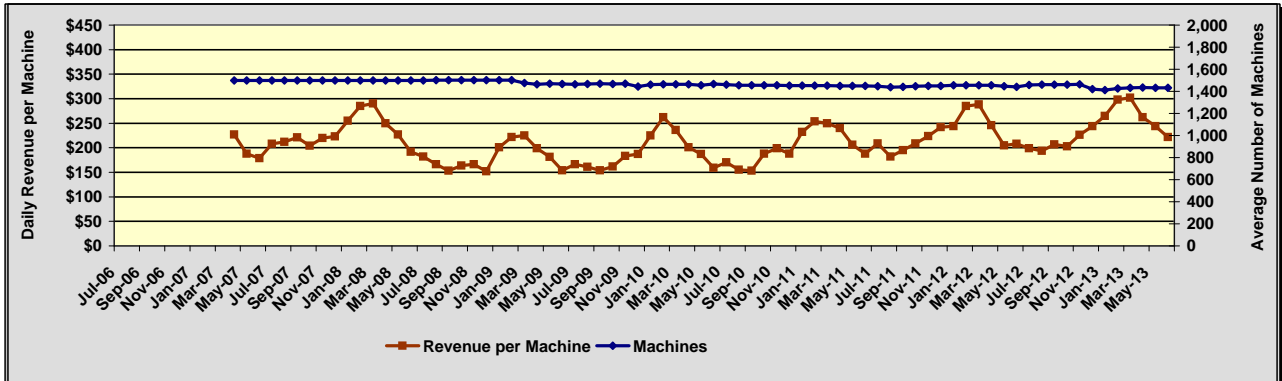
GULFSTREAM PARK RACING AND CASINO



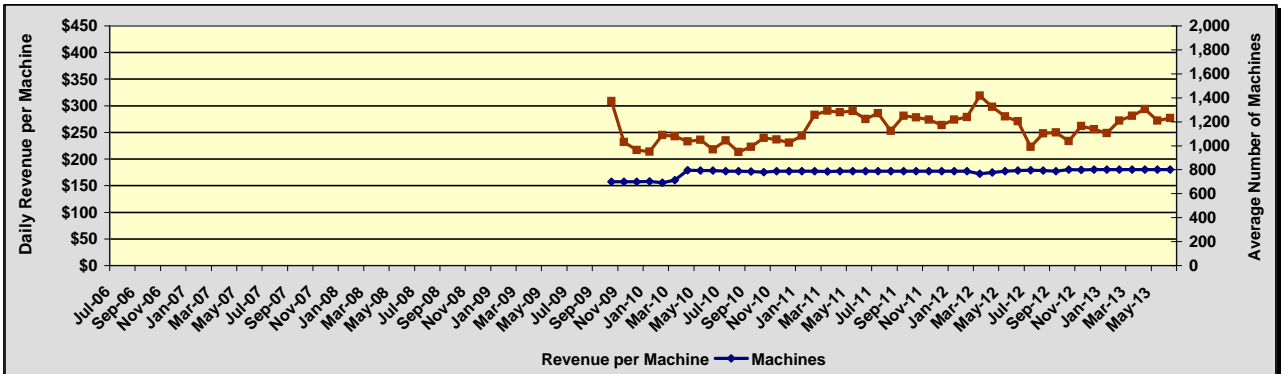
MARDI GRAS RACETRACK AND GAMING CENTER



ISLE CASINO AND RACING AT POMPANO PARK

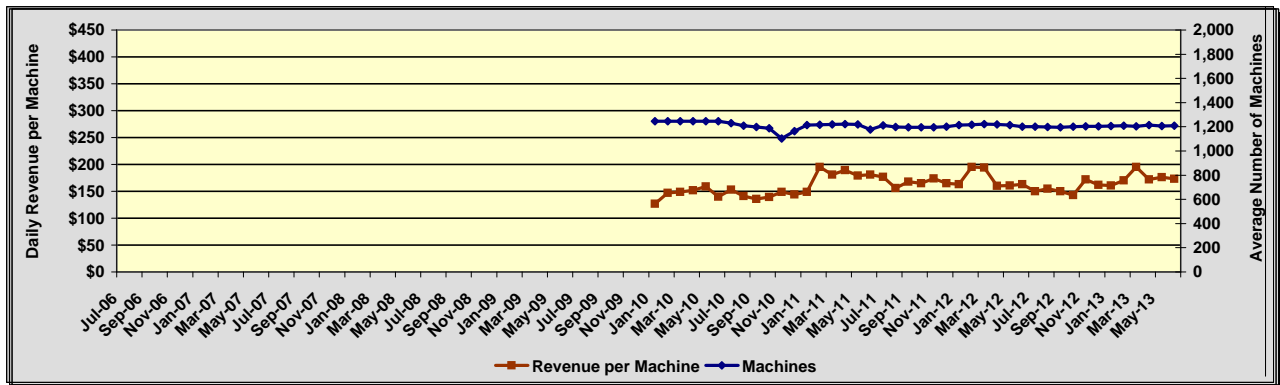


FLAGLER DOG TRACK AND MAGIC CITY CASINO

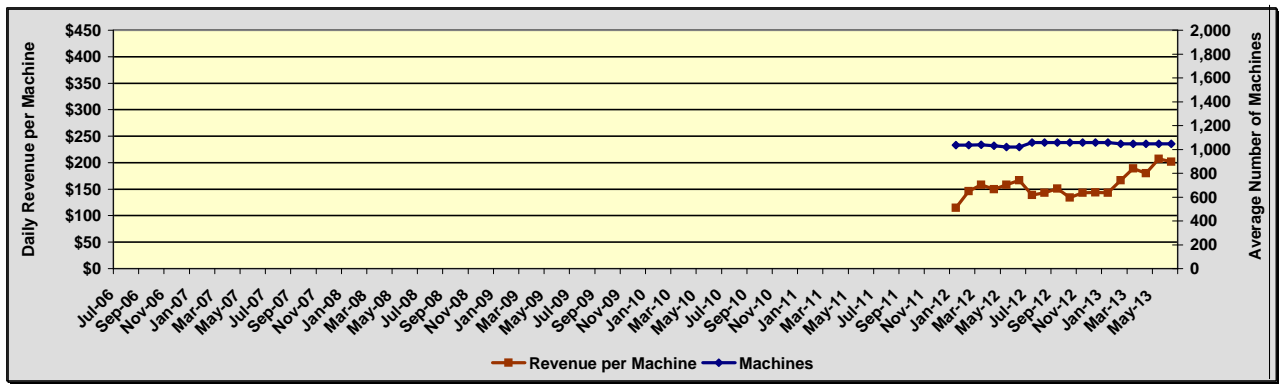


Daily Revenue per Machine Compared to Average Number of Machines For Fiscal Years 2006/2007 - 2012/2013

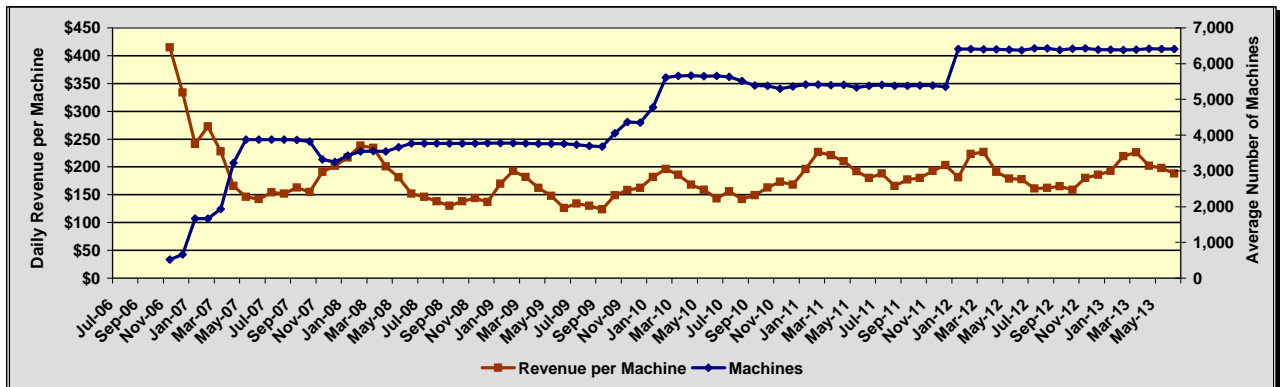
CALDER CASINO AND RACE COURSE



MIAMI JAI ALAI

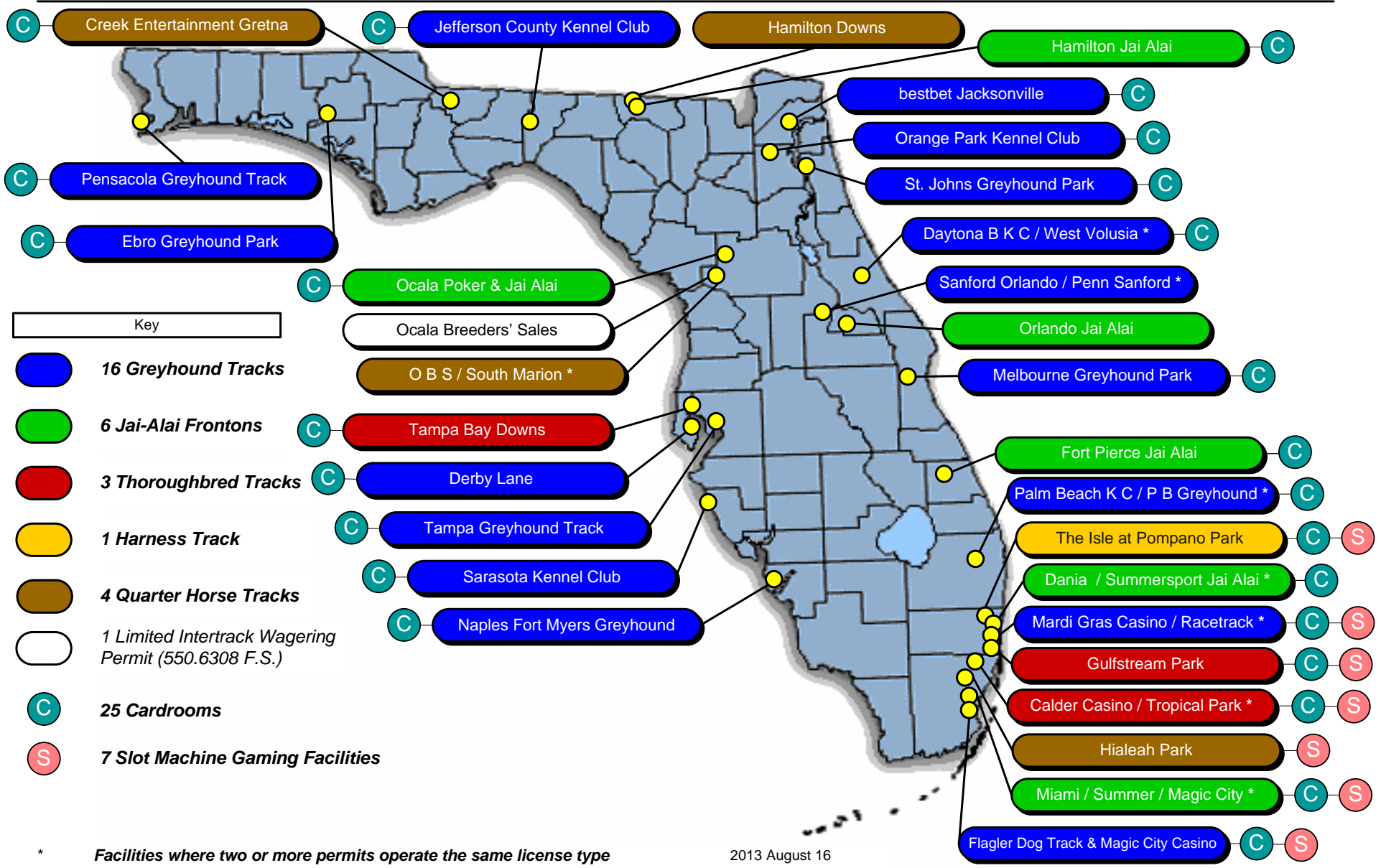


ALL FACILITIES COMBINED



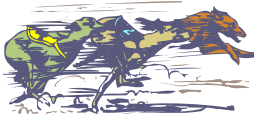
DATA BY ASSOCIATION/FACILITY

Pari-Mutuel Permitholders with 2012-2013 Operating Licenses

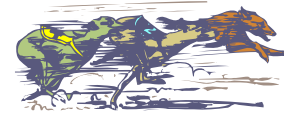


* Facilities where two or more permits operate the same license type

2013 August 16



GREYHOUND ASSOCIATIONS



Florida remains the leader in greyhound racing in the United States with 20 permitholders operating at 13 tracks throughout the state. A total of 3,546 performances, including charity and scholarship performances, were conducted during this past fiscal year, a decrease of two percent from the previous fiscal year.

During Fiscal Year 2012/2013, handle wagered on live greyhound performances decreased by six percent. Intertrack handle wagered on broadcasts of live Florida greyhound performances decreased by two percent. Simulcast handle wagered on broadcasts of performances from outside the state decreased by six percent. Intertrack simulcast handle wagered on broadcast of performances from outside the state increased by 17 percent. Overall, there was a decrease in total handle by three percent for the Florida greyhound industry.

Total paid attendance decreased by 10 percent from the prior year. The division reports only paid attendance; and does not include free admissions or complimentary passes in its data. Total greyhound revenue to the state decreased by 11 percent during Fiscal Year 2012/2013. The greyhound industry accounted for approximately 28.8 percent of Florida's total revenue and 29.6 percent of total handle from pari-mutuel performances.

Greyhound permitholders reported paying a total of \$25,903,204 in purses during Fiscal Year 2012/2013. For more detail on purses paid, please refer to the following information by permitholder. The division was able to confirm reported purse amounts from the weekly purse reports submitted in accordance with Section 61D-8.006, Florida Administrative Code.

All of Florida's greyhound permitholders actively sponsor greyhound adoption programs. Many of the state's greyhound tracks provide for on-site adoption booths, animal welfare, funding, advertising, special events and public information. Section 550.1647, Florida Statutes, provides a greyhound permitholder with credits in an amount equal to the uncashed pari-mutuel tickets remitted in the prior state fiscal year to the state, which is applied against any taxes imposed the next fiscal year. Additionally, Section 550.1647, Florida Statutes, requires each permitholder to pay an amount not less than 10 percent of the credit provided by this section to any bona fide organization that promotes or encourages the adoption of greyhounds. During Fiscal Year 2012/2013, total contributions provided to greyhound adoption units amounted to \$165,858, which exceeded the minimum statutory requirement.

Total Performances	3,546	Total Paid Attendance	327,927
Total Racing Days	2,436	Total Admission Tax	\$18,526

Daytona Beach Kennel Club, Inc.			
Volusia County			
Website	www.daytonagreyhound.com	Telephone	386.252.6484
Mailing/Street Address	960 South Williamson Boulevard, Daytona Beach, Florida 32114-7247	Fax	386.252.4808
Meet Period	07/02/2012 to 11/03/2012 and 04/22/2013 to 06/29/2013		
Racing Results			
Performances	224	Purses Paid	\$832,668
Racing Days	168		
Paid Attendance	0		
Total Admission Tax	\$0		
Derby Lane			
St. Petersburg Kennel Club, Inc. Pinellas County			
Website	www.derbylane.com	Telephone	737.812.3236
Mailing Address	Post Office Box 22099, St. Petersburg, Florida 33742-2099	Fax	727.812.3305
Street Address	10490 Gandy Boulevard, St. Petersburg, Florida 33702-2395		
Meet Period	01/01/2013 to 06/29/2013		
Racing Results			
Performances	207	Purses Paid	\$2,285,259
Racing Days	155		
Paid Attendance	0		
Total Admission Tax	\$0		

Ebro Greyhound Park
Washington County Kennel Club, Inc.
Washington County

Website www.qoebro.com **Telephone** 850.234.3943
Mailing/Street Address 6558 Dog Track Road, Ebro, Florida 32437-1142 **Fax** 850.535.4442
Meet Period 07/02/2012 to 09/22/2012 and 05/17/2013 to 06/29/2013
Racing Results
Performances 173 Purses Paid \$514,723
Racing Days 87
Paid Attendance 8,443
Total Admission Tax \$911

Flagler Dog Track
West Flagler Associates, Ltd.
Dade County

Website www.magiccitycasino.com **Telephone** 305.649.3000
Mailing Address Post Office Box 350940, Miami, Florida 33135-0940 **Fax** 305.631.4525
Street Address 401 N.W. 38th Court, Miami, Florida 33126-5638
Meet Period 07/01/2012 to 10/28/2012 and 06/01/2013 to 06/30/2013
Racing Results
Performances 166 Purses Paid \$3,375,181
Racing Days 105
Paid Attendance 0
Total Admission Tax \$0

H & T Gaming, Inc.
Dade County

See Mardi Gras Racetrack and Gaming Center's contact information for detail.

Meet Period 02/17/2013 to 04/29/2013
Racing Results
Performances 104 Purses Paid \$1,087,786
Racing Days 52
Paid Attendance 0
Total Admission Tax \$0

Jacksonville Kennel Club, Inc.
Jacksonville Greyhound Racing, Inc.
Duval County

Website www.bestbetjax.com **Telephone** 904.646.0001
Mailing Address Post Office Box 959, Orange Park, Florida 32067-0959 **Fax** 904.646.0420
Street Address 201 Monument Road, Jacksonville, Florida 32225-8106
Meet Period 07/01/2012 to 09/02/2012 and 05/27/2013 to 06/30/2013 at Orange Park
Racing Results
Performances 112 Purses Paid \$1,054,292
Racing Days 85
Paid Attendance 0
Total Admission Tax \$0

Jefferson County Kennel Club, Inc.
Jefferson County

Website www.ickcgreyhounds.com **Telephone** 850.997.2561
Mailing Address Post Office Box 400, Monticello, Florida 32345-0400 **Fax** 850.997.3871
Street Address 3079 North Jefferson Street, Monticello, Florida 32344-5685
Meet Period 07/02/2012 to 09/29/2012
Racing Results
Performances 104 Purses Paid \$158,448
Racing Days 52
Paid Attendance 3,573
Total Admission Tax \$75

License Acquisitions, LLC (Palm Beach Greyhound Racing)

Palm Beach County

See Palm Beach Kennel Club's contact information for detail.

Meet Period 07/01/2012 to 09/30/2012

Racing Results

Performances	116	Purses Paid	\$1,017,491
Racing Days	91		
Paid Attendance	15,136		
Total Admission Tax	\$281		

Mardi Gras Racetrack and Gaming Center

Hartman and Tyner, Inc.

Broward County

Website www.mardigrascasinofl.com

Mailing/Street Address 831 North Federal Highway, Hallandale Beach, Florida 33009-2410

Telephone 954-924-3200

Fax 954.924.3143

Meet Period 12/01/2012 to 02/16/2013

Racing Results

Performances	110	Purses Paid	\$1,354,273
Racing Days	55		
Paid Attendance	0		
Total Admission Tax	\$0		

Melbourne Greyhound Park, LLC

Brevard County

Website www.mgpark.com

Mailing/Street Address 1100 North Wickham Road, Melbourne, Florida 32935-8941

Telephone 321.259.9800

Fax 321.259.3437

Meet Period 03/25/2013 to June 22, 2013

Racing Results

Performances	104	Purses Paid	\$353,226
Racing Days	78		
Paid Attendance	13,850		
Total Admission Tax	\$44		

Naples-Ft. Myers Greyhound Track

Southwest Florida Enterprises, Inc.

Lee County

Website www.naplesfortmyersdogs.com

Mailing Address Post Office Box 2567, Bonita Springs, Florida 34133-2567

Street Address 10601 Bonita Beach Road, S.W., Bonita Springs, Florida 34135-5620

Telephone 239.992.2411

Fax 239.947.9244

Meet Period 11/02/2012 to 05/27/2013

Racing Results

Performances	395	Purses Paid	\$1,650,659
Racing Days	190		
Paid Attendance	154,600		
Total Admission Tax	\$14,202		

Orange Park Kennel Club, Inc.

Jacksonville Greyhound Racing, Inc.

Clay County

Website www.bestbetjax.com

Mailing Address Post Office Box 959, Orange Park, Florida 32067-0959

Street Address 455 Park Avenue, Orange Park, Florida 32073-3101

Telephone 904.646.0001

Fax 904.646.0420

Meet Period 09/03/2012 to 12/09/2012

Racing Results

Performances	112	Purses Paid	\$942,621
Racing Days	83		
Paid Attendance	0		
Total Admission Tax	\$0		

Palm Beach Kennel Club

Investment Corporation of Palm Beach

Palm Beach County

Website www.pbkennelclub.com

Mailing/Street Address 1111 North Congress Avenue, West Palm Beach, Florida 33409-6317

Telephone 561.683.2222

Fax 561.471.9114

Meet Period 10/01/2012 to 06/30/2013

Racing Results

Performances	349	Purses Paid	\$3,380,887
Racing Days	271		
Paid Attendance	49,147		
Total Admission Tax	\$1,745		

Penn Sanford, LLC, d/b/a Sanford-Orlando Kennel Club

Seminole County

See SOKC, LLC's contact information for detail.**Meet Period** 07/02/2012 to 12/31/2012**Racing Results**

Performances	156	Purses Paid	\$700,535
Racing Days	104		
Paid Attendance	0		
Total Admission Tax	0		

Pensacola Greyhound Racing, LLP

Escambia County

Websitewww.pensacolagreyhoundtrack.com**Mailing Address**

Post Office Box 12824, Pensacola, Florida 32591-2824

Telephone

850.455.8595

Street Address

951 Dog Track Road, Pensacola, Florida 32506-8236

Fax

850.453.8883

Meet Period 07/01/2012 to 06/30/2013**Racing Results**

Performances	159	Purses Paid	\$847,245
Racing Days	159		
Paid Attendance	0		
Total Admission Tax	\$0		

SOKC, LLC, d/b/a Sanford-Orlando Kennel Club

Seminole County

Websitewww.sanfordorlandokc.com**Mailing/Street Address**

301 Dog Track Road, Longwood, Florida 32750-6558

Telephone

407.831.1600

Meet Period

01/01/2013 to 06/29/2013

Fax

407.831.3997

Racing Results

Performances	178	Purses Paid	\$820,090
Racing Days	125		
Paid Attendance	0		
Total Admission Tax	\$0		

Sarasota Kennel Club, Inc.

Sarasota County

Websitewww.sarasotakennelclub.com**Mailing/Street Address**

5400 Bradenton Road, Sarasota, Florida 34234-2999

Telephone

941.355.7744

Meet Period

11/23/2012 to 05/04/2013

Fax

941.351.2207

Racing Results

Performances	190	Purses Paid	\$822,262
Racing Days	138		
Paid Attendance	83,178		
Total Admission Tax	\$1,267		

St. Johns Greyhound Park (Bayard Raceways, Inc.)Jacksonville Greyhound Racing, Inc.
St. Johns County**Website**www.bestbetjax.com**Mailing Address**

Post Office Box 959, Orange Park, Florida 32067-0959

Telephone

904.646.0001

Street Address

6322 Racetrack Road, Jacksonville, Florida 32259-3107

Fax

904.646.0420

Meet Period 12/10/2012 to 05/26/2013 at Orange Park**Racing Results**

Performances	191	Purses Paid	\$1,877,623
Racing Days	143		
Paid Attendance	0		
Total Admission Tax	\$0		

Tampa Greyhound TrackAssociated Outdoor Clubs, Inc.
Hillsborough County**Website**www.luckyscards.com**Mailing Address**

Post Office Box 8096, Tampa, Florida 33674-8096

Telephone

813.932.4313

Street Address

8300 North Nebraska Avenue, Tampa, Florida 33604-3107

Fax

813.932.5048

Meet Period 07/02/2012 to 12/31/2012 at Derby Lane**Racing Results**

Performances	207	Purses Paid	\$2,061,961
Racing Days	154		
Paid Attendance	0		
Total Admission Tax	\$0		

West Volusia Racing, Inc.

Volusia County

See Daytona Beach Kennel Club's contact information for detail.**Meet Period** 11/05/2012 to 04/20/2013**Racing Results**

Performances	189	Purses Paid	\$765,974
Racing Days	141		
Paid Attendance	0		
Total Admission Tax	\$0		



JAI ALAI FRONTON ASSOCIATIONS



Florida was the first state in the nation to conduct jai alai performances, with the first fronton being built in 1926. There are nine jai alai permitholders operating at six frontons throughout Florida. In fact, Florida is now the only state where live jai alai games are conducted. A total of 1,011 performances, including charity and scholarship performances, were conducted during this past fiscal year, an increase of 26 percent from the previous fiscal year.

During Fiscal Year 2012/2013, handle wagered on live jai alai performances decreased by 28 percent. Intertrack handle wagered on broadcasts of live Florida jai alai performances increased by four percent. There are no longer any other states that conduct jai alai; therefore, there was no simulcast or intertrack simulcast handle. Total handle declined by 11 percent for the Florida jai alai industry.

Total jai alai revenue to the state increased by 35 percent during Fiscal Year 2012/2013. The jai alai industry accounted for approximately 4.4 percent of Florida's total revenue and 3.1 percent of total handle from pari-mutuel performances.

Permitholders reported paying a total of \$5,800,231 in players' awards. For more detail on players' awards paid, please refer to the following information by permitholder.

Total paid attendance decreased by 80 percent from the prior year. The division reports only paid attendance; and does not include free admissions or complimentary passes in its data.

Total Performances	1,011	Total Paid Attendance	1,855
Total Gaming Days	659	Total Admission Tax	\$543

Dania Jai Alai			
Dania Entertainment Center, LLC Broward County			
Website	www.betdania.com	Telephone	954.927.2841
Mailing/Street Address	301 East Dania Beach Boulevard, Dania Beach, Florida 33004-3016	Fax	954.925.7529
Meet Period	12/01/2012 to 06/30/2013		
Gaming Results			
Performances	211	Paid Attendance	0
Live Operating Days	151	Total Admission Tax	\$0
Players' Awards Paid	\$1,319,521		
Dania Summer Jai Alai			
Dania Entertainment Center, LLC Broward County			
See Dania Jai Alai's contact information for detail.			
Meet Period	07/03/2012 to 11/30/2012		
Gaming Results			
Performances	121	Paid Attendance	0
Live Operating Days	87	Total Admission Tax	\$0
Players' Awards Paid	\$713,959		
Ft. Pierce Jai Alai			
Florida Gaming Centers, Inc. St. Lucie County			
Website	www.fla-gaming.com	Telephone	772.464.7500
Mailing/Street Address	1750 South Kings Highway, Ft. Pierce, Florida 34945-3099	Fax	772.464.0099
Meet Period	02/01/2013 to 03/30/2013		
Miscellaneous Revenue to State	\$31,178	(See Section 550.09511(4), Florida Statutes, for detail.)	
Gaming Results			
Performances	43	Paid Attendance	0
Live Operating Days	26	Total Admission Tax	\$0
Players' Awards Paid	\$196,845		

Hamilton Jai Alai and Poker

Richmond Entertainment, Inc.
Hamilton County

Website	www.hamiltondownsjaijai.com	Telephone	386.638.0011
Mailing/Street Address	6968 US Highway 129 South, Jasper, Florida 32052-6774	Fax	386.638.0033
Meet Period	03/04/2013 to 06/12/2013		
Gaming Results			
Performances	225	Paid Attendance	0
Live Operating Days	38	Total Admission Tax	\$0
Players' Awards Paid	22,583		

Magic City Jai Alai

West Flagler Associates, Ltd.
Dade County

Website	www.magiccitycasino.com	Telephone	305.649.3000
Mailing Address	Post Office Box 350940, Miami, Florida 33135-0940	Fax	305.631.4525
Street Address	401 Northwest 38th Court, Miami, Florida 33126-5638		
Meet Period	05/01/2013 to 06/30/2013 at Miami Jai Alai		
Gaming Results			
Performances	58	Paid Attendance	0
Live Operating Days	53	Total Admission Tax	\$0
Players' Awards Paid	\$619,167		

Miami Jai Alai

Florida Gaming Centers, Inc.
Dade County

Website	www.fla-gaming.com	Telephone	305.633.6400
Mailing/Street Address	3500 N.W. 37th Avenue, Miami, Florida 33142-4923	Fax	305.633.4386
Meet Period	11/01/2012 to 04/30/2013		
Gaming Results			
Performances	153	Paid Attendance	0
Live Operating Days	153	Total Admission Tax	\$0
Players' Awards Paid	\$1,728,934		

Ocala Poker and Jai Alai

Second Chance Jai Alai, LLC
Marion County

Website	www.ocalapoker.com	Telephone	352.591.2345
Mailing Address	Post Office Box 580, Orange Lake, Florida 32681	Fax	352.591.3402
Street Address	4601 N.W. Highway 318, Reddick, Florida 32686		
Meet Period	02/01/2013 to 03/08/2013		
Miscellaneous Revenue to State	\$22,000	(See Section 550.09511(4), Florida Statutes, for detail.)	
Gaming Results			
Performances	41	Paid Attendance	0
Live Operating Days	21	Total Admission Tax	\$0
Players' Awards Paid	\$150,340		

Orlando Jai Alai

RB Jai Alai, LLC
Seminole County

Website	www.orlandojaijai.com	Telephone	407.339.6221
Mailing/Street Address	6405 South Highway 17-92, Fern Park, Florida 32730-2057	Fax	407.831.4689
Meet Period	07/06/2012 to 07/14/2012, 11/16/2012 to 03/4/2013 and 6/10/2013 to 06/26/2013		
Gaming Results			
Performances	82	Paid Attendance	1,855
Live Operating Days	53	Total Admission Tax	\$543
Players' Awards Paid	\$52,397		

Summer Jai Alai

Dade County

See Miami Jai Alai's contact information for detail.

Meet Period	08/03/2012 to 10/31/2012		
Gaming Results			
Performances	77	Paid Attendance	0
Live Operating Days	77	Total Admission Tax	\$0
Players' Awards Paid	\$996,485		



THOROUGHBRED ASSOCIATIONS



Florida continues to be a premier thoroughbred racing state with four permitholders operating at three tracks located in Central and South Florida. A total of 332 regular performances, including charity and scholarship performances, were conducted during this past fiscal year, an increase of two percent from the previous fiscal year.

During Fiscal Year 2012/2013, handle on live thoroughbred performances increased eight percent. Handle from intertrack wagering decreased four percent. Simulcast handle wagered on broadcasts of performances from outside the state increased by 13 percent. Intertrack simulcast handle decreased by three percent. Overall, total handle increased by approximately one percent for the Florida thoroughbred industry.

Total thoroughbred revenue to the state during Fiscal Year 2012/2013, increased by approximately one percent from the prior year. The thoroughbred industry accounted for approximately 58.5 percent of Florida's total revenue and 61.7 percent of total handle from pari-mutuel performances.

Permitholders reported paying a total of \$80,422,417 in purses. For more detail on purses paid, please refer to the following information by permitholder. The Florida Thoroughbred Breeders' and Owners' Association did not dispute the amount of purses paid reported by the permitholders.

Total paid attendance increased by three percent from the prior year. The division reports only paid attendance; and does not include free admissions or complimentary passes in its data.

Total Performances	332	Total Paid Attendance	100,925
Total Racing Days	332	Total Admission Tax	\$25,231

Calder Race Course, Inc.			
Churchill Downs, Inc. Dade County			
Website	www.calderracecourse.com	Telephone	305.625.1311 (Dade)
Mailing/Street Address	21001 N.W. 27th Avenue, Miami Gardens, Florida 33056-1461	Fax	954.523.4324 (Broward)
Meet Period	07/01/2012 to 08/31/2012 and 04/06/2013 to 06/30/2013		305.625.2505
Racing Results			
Performances	84	Purses Paid	\$15,043,975
Racing Days	84		
Paid Attendance	0		
Total Admission Tax	\$0		
Gulfstream Park Racing Association, Inc.			
Stronach Group Broward County			
Website	www.gulfstreampark.com	Telephone	954.457.6213
Mailing/Street Address	901 South Federal Highway, Hallandale Beach, Florida 33009-7124	Fax	954.457.6913
Meet Period	12/01/2012 to 06/25/2013		
Racing Results			
Performances	91	Purses Paid	\$39,158,304
Racing Days	91		
Paid Attendance	0		
Total Admission Tax	\$0		
Tampa Bay Downs, Inc.			
Hillsborough County			
Website	www.tampabaydowns.com	Telephone	813.855.4401
Mailing Address	Post Office Box 2007, Oldsmar, Florida 34677	Fax	813.854.3539
Street Address	11225 Race Track Road, Tampa, Florida 33626-3122		
Meet Period	12/01/2012 to 06/30/2013		
Racing Results			
Performances	92	Purses Paid	\$14,273,658
Racing Days	92		
Paid Attendance	100,925		
Total Admission Tax	\$25,231		
Tropical Park, Inc.			
Churchill Downs, Inc. Dade County			
See Calder's contact information for detail.			
Meet Period	09/01/2012 to 11/30/2012		
Racing Results			
Performances	65	Purses Paid	\$11,946,480
Racing Days	65		
Paid Attendance	0		
Total Admission Tax	\$0		



QUARTER HORSE RACING ASSOCIATION



There are five permitholders conducting quarter horse racing performances at four tracks located in the State of Florida. In Fiscal Year 2012/2013, a total of 104 performances were conducted.

During Fiscal Year 2012/2013, handle wagered on live quarter horse performances decreased by 27 percent. Intertrack handle wagered on broadcasts of performances decreased by 33 percent. Simulcast handle wagered on broadcasts of performances from outside the state had no changes, while intertrack simulcast handle decreased by 100 percent. Overall, total handle decreased by 30 percent for the Florida quarter horse industry.

Total quarter horse revenue to the state during Fiscal Year 2012/2013, decreased by 17 percent. The quarter horse industry accounted for approximately 0.9 percent of Florida's total revenue and 0.2 percent of total handle from pari-mutuel performances.

Permitholders reported paying a total of \$3,948,018 in purses. For more detail on purses paid, please refer to the following information by permitholder. The Florida Quarter Horse Breeders' and Owners' Association was able to confirm the amount of purses paid reported by Hialeah Park.

The division reports only paid attendance; and does not include free admissions or complimentary passes in its data.

Total Performances	104	Total Paid Attendance	0
Total Racing Days	60	Total Admission Tax	\$0

Gretna Racing, LLC			
Gadsden County			
Website	www.creekenentertainment.com	Telephone	850.875.6920
Mailing Address	Post Office Box 70, Gretna, Florida 32332	Fax	850.875.6937
Street Address	501 Racetrack Drive, Gretna, Florida 32332		
Meet Period	07/01/2012 to 06/22/2013		
Racing Results		Purses Paid	\$252,900
Performances	32		
Racing Days	16		
Paid Attendance	0		
Total Admission Tax	\$0		
Hamilton Downs Horsetrack, LLC			
Hamilton County			
Website	www.hamiltondownsjaijai.com	Telephone	386.638.0011
Mailing Address	6968 US Highway 129 South, Jasper, Florida 32052-6774	Fax	386.638.0033
Street Address	2220 Northwest County Road 143, Jennings, Florida 32053		
Meet Period	10/12/2012 to 10/18/2012 and 01/02/2013 to 01/06/2013		
Racing Results		Purses Paid	\$71,618
Performances	40		
Racing Days	12		
Paid Attendance	0		
Total Admission Tax	\$0		
Hialeah Park			
South Florida Racing Association, LLC			
Dade County			
Website	www.hialeahparkcasino.com	Telephone	305.885.8000
Mailing Address	Post Office Box 158, Hialeah, Florida 33011	Fax	305.887.8006
Street Address	2200 East 4th Avenue, Hialeah, Florida 33010		
Meet Period	12/15/2012 to 02/17/2013		
Racing Results		Purses Paid	\$3,600,000
Performances	30		
Racing Days	30		
Paid Attendance	0		
Total Admission Tax	\$0		

Ocala Breeder's Sales Company, Inc.

Marion County

Website

www.obssales.com

Telephone

352.237.2154

Mailing Address

Post Office Box 99, Ocala, Florida 34478-0099

Fax

352.237.3566

Street Address

1701 Southwest 60th Avenue, Ocala, Florida 34474-1800

Meet Period

12/11/2012

Racing Results

Performances 1
Racing Days 1
Paid Attendance 0
Total Admission Tax \$0

Purses Paid \$17,500

South Marion Real Estate Holdings, LLC

Central Florida Gaming, LLC
Marion County

Website

not listed

Telephone

352.817.7522

Mailing Address

Post Office Box 6331, Ocala, Florida 34478

Fax

none listed

Street Address

2117 Southwest 7th Avenue, Ocala, Florida 34471

Meet Period

10/20/2012 (at Ocala Breeder's Sales Company, Inc.)

Racing Results

Performances 1
Racing Days 1
Paid Attendance 0
Total Admission Tax \$0

Purses Paid \$6,000



HARNESS ASSOCIATIONS



Pompano Park is the only permitholder conducting harness horse racing performances in the State of Florida. A total of 140 performances, including charity and scholarship performances, were conducted during this past fiscal year, a decrease of one percent from the previous fiscal year.

During Fiscal Year 2012/2013, handle wagered on live harness performances decreased by 17 percent. Intertrack handle wagered on broadcasts of live Florida harness performances decreased by 21 percent. Simulcast handle wagered on broadcasts of performances from outside the state decreased by two percent while intertrack simulcast handle increased by two percent. Overall, total handle decreased by two percent for the Florida harness industry.

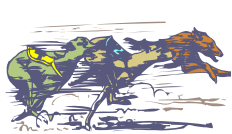
Total revenue to the state during Fiscal Year 2012/2013, decreased by three percent from the prior year. The harness industry accounted for approximately 7.4 percent of Florida's total revenue and 5.4 percent of total handle from pari-mutuel performances.

Pompano Park reported paying \$7,118,628 in purses. For more detail on purses paid, please refer to the information below. The Florida Standardbred Breeders' and Owners' Association was able to confirm the amount of purses paid reported by Pompano Park.

The division reports only paid attendance; and does not include free admissions or complimentary passes in its data.

Total Performances	140	Total Paid Attendance	0
Total Racing Days	140	Total Admission Tax	\$0

Isle Casino and Racing at Pompano Park			
PPI, Inc. Broward County			
Website	pompano-park.isleofcapricasinos.com	Telephone	954.972.2000
Mailing/Street Address	1800 Southwest 3rd Street, Pompano Beach, Florida 33069-3106	Fax	954.978.0377
Meet Period	07/04/2012 to 07/28/2012 and 09/19/2012 to 06/29/2013		
Racing Results			
Performances	140	Purses Paid	\$7,118,628
Racing Days	140		
Paid Attendance	0		
Total Admission Tax	\$0		



SUMMARY

PARI-MUTUEL INDUSTRY

During Fiscal Year 2012/2013, the total handle wagered for all industries exceeded \$872 million, a decrease of less than one percent from the prior fiscal year. Total pari-mutuel performances, including charity and scholarship performances, conducted during Fiscal Year 2012/2013, increased by three percent from the previous fiscal year.

The state realized revenue from performances of approximately \$11.4 million, a decrease of two percent from the prior fiscal year. Of the \$11.4 million collected, greyhound permitholders accounted for 28.8 percent, thoroughbreds for 58.5 percent, harness for 7.4 percent, jai alai for 4.4 percent, and quarter horse for 0.9 percent.

Total paid attendance decreased eight percent from the prior year. The division reports only paid attendance; and does not include free admission or complimentary passes in its data.



HORSE RACING

Promotional Programs for Florida-Bred Horses *

Florida breeder promotions and award programs are administered by private breeders' and owners' associations organized to promote ownership and breeding of race horses in the State of Florida. Each association conducts its own campaign to enhance the horse breeding industry in the state and provides breeders' and owners' awards of up to 20 percent of announced gross purses. The Florida Standardbred Breeders' and Owners' Association is funded by the breaks and uncashed tickets from live performances and one percent of the intertrack handle. The Quarter Horse Breeders' Association is funded by the breaks and the uncashed tickets from live races and one percent of the live and intertrack handle. The Florida Thoroughbred Breeders' and Owners' Association awards program is funded by 0.955 percent of the live, simulcast and intertrack handle, as well as 3.475 percent of the gross revenue from out-of-state wagers on Florida races.

To date, the Florida thoroughbred breeding industry has produced 50 national champions. Florida also produced "Affirmed," still the last horse to have swept the Triple Crown (1978). Ocala/Marion County, Florida, is home to some of the leading breeding farms in the country. The industry boasts 19 classic wins (Kentucky Derby, Preakness Stakes and Belmont Stakes), 25 Breeders' Cup Day champions and six horses of the year.

The Florida Thoroughbred Breeders' and Owners' Association (FTBOA) funds the Florida-bred Stakes Program, which is implemented at Florida's Thoroughbred racetracks. Through a percentage of pari-mutuel handle, Florida Thoroughbred permitholders contributed \$9,330,631 to the FTBOA during Fiscal Year 2012/2013. The FTBOA paid out \$5,200,931 in Breeders' Awards and \$1,421,550 through the Florida-bred Stakes Program. The Florida-bred Stakes Program includes "The Sunshine Millions" at Gulfstream Park, "The Florida Million" at Calder Race Course/Tropical Park, "Florida Cup Day" at Tampa Bay Downs and additional funds for supplements to Florida-bred Preferred Stakes Races during the Calder/Tropical and Tampa Bay Downs' meets.

The Florida Standardbred Breeders and Owners Association, a non-profit organization and the only organized representative of Standardbred horsemen in the State of Florida, is the designated association for the allocation and distribution of funds for Florida-bred racing. Promotional activities include providing breeder and stallion awards for eligible Florida-bred horses during Pompano Park's 2012/2013 meet as well as awards for Florida Breeders' Stake races. A series of races and awards were also provided for two and three-year-old standardbreds to prepare for the winter meet at Pompano Park. The total amount of funds collected and distributed to the Florida Standardbred horsemen throughout the year exceeded \$500,000.

** Note: This promotional program information is provided by respective Breeders' and Owners' Associations.*

**UNIVERSITY OF FLORIDA
COLLEGE OF MEDICINE RACING LABORATORY**

The Racing Laboratory at the College of Medicine at the University of Florida is an International Organization for Standardization ISO 17025 accredited laboratory that employs various procedures to detect and identify prohibited drugs, medications, stimulants, depressants, hypnotics, local anesthetics or drug-masking agents in the blood, urine or other bodily fluids of racing horses and greyhounds.

During Fiscal Year 2012/2013, the laboratory received and processed 89,597 samples and performed 386,276 analyses. The vigilant monitoring of samples by the Laboratory serves to deter the use of prohibited drugs in racing animals in Florida.

	Horse Urine/Blood	Greyhound Urine 1	Investigative
Samples Received	20,133	69,397	67
Samples Analyzed	20,005	48,184	25
Number of Analyses	95,535	290,675	66
Positives	285	21	N/A

¹ Volume Not Sufficient For Testing 21,538 (31.0% of total number of samples received)

DRUG POSITIVES FOR FISCAL YEAR 2012/2013		
<i>Types of Positives (ARCI Drug Class)</i>	<i>Horse</i>	<i>Greyhound</i>
Acepromazine metabolite (3)	1	0
Albuterol (3)	3	0
Atenolol (3)	2	0
Atropine (3)	1	0
Benzoyllecgonine (1)	0	1
Benzoyllecgonine (1), Cocaine (1)	0	1
Boldenone (3)	1	0
Caffeine (2)	1	0
Caffeine (2), Theobromine (4), Theophylline (3)	1	3
Clenbuterol (3)	158	0
Clenbuterol (3), Flunixin (4)	1	0
Clenbuterol (3), Phenylbutazone (4)	2	0
Dexamethasone (4)	3	0
Firocoxib (4)	1	0
Flunixin (4)	16	4
Flunixin (4), Ketoprofen (4)	1	0
Flunixin (4), Phenylbutazone (N/A)	2	0
Fluphenazine (2)	2	0
Furosemide (N/A)	2	0
Glycopyrrolate (3)	6	0
Glycopyrrolate (3), Phenylbutazone (N/A)	1	0
Isoxsuprine (4)	2	0
Ketoprofen (4)	1	0
Methocarbamol (4)	4	0
Naproxen (4)	1	0
Phenylbutazone (N/A)	65	0
Procaine (3)	0	5
Pyrimidine (3) reported as O-Desmethylpyrimidine	2	0
Stanozolol (3)	1	0
Strychnine (1)	1	0
Testosterone (4), Nandrolone (4)	1	0
Theobromine (4)	1	5
Theophylline (3)	0	1
Theobromine (4), Theophylline (3)	1	1
TOTALS	285	21

- Class (1): Stimulant and depressant drugs that have the highest potential to affect performance and that have no generally accepted medical use in the racing horse.
- Class (2): Drugs that have a high potential to affect performance, but less of a potential than drugs in Class 1.
- Class (3): Drugs that may or may not have generally accepted medical use in the racing horse, but the pharmacology of which suggests less potential to affect performance than drugs in Class 2.
- Class (4): This class includes therapeutic medications that would be expected to have less potential to affect performance than those in Class 3.
- Class (5): This class includes therapeutic medications for which concentration limits have been established by the racing jurisdictions as well as certain miscellaneous agents such as dimethylsulfoxide (DMSO) and other medications as determined by the regulatory bodies.

FINANCIAL STATEMENTS

DIVISION OF PARI-MUTUEL WAGERING
SUMMARY OF STATE REVENUE FROM PARI-MUTUEL, CARDROOM,
SLOT ACTIVITIES, AND INDIAN GAMING COMPACT
FISCAL YEAR 2012/2013

State Revenue From Regular Performances	
Tax on Attendance	\$ 34,054
Daily License Fees	2,360,690
Tax on Handle	9,115,955
State Revenue From Pari-Mutuel Performances	<u>\$ 11,510,699</u>
Other State Revenue	
Occupational Licenses	\$ 479,718
Fingerprint Fees	179,478
Escheated Tickets From Greyhound and Jai Alai ⁽¹⁾	842,053
Racing Scholarship Funds ⁽¹⁾	1,408
PMW Trust Fund - Drug Fines	49,750
Miscellaneous Revenue	131,303
General Revenue Fund - Other Fines	6,300
Other State Revenue	<u>\$ 1,690,010</u>
Total Pari-Mutuel State Revenue	<u>\$ 13,200,709</u>
State Revenue From Cardrooms	
Table Fees	\$ 834,000
Gross Receipts ⁽²⁾	13,269,043
Occupational Licenses	143,954
Total State Revenue From Cardrooms	<u>\$ 14,246,997</u>
State Revenue From Slots	
Compulsive/Addictive Gambling Fee	\$ 2,000,000 ⁽⁴⁾
Facility License Fee	16,000,000 ⁽⁴⁾
Slot Taxes ⁽³⁾	152,535,260
Fingerprint Fees	30,538
Occupational Licenses	294,838
Miscellaneous Revenue	979
Miscellaneous Fines	122,350
Total State Revenue From Slots	<u>\$ 170,983,965</u>
Total State Revenue Generated From Pari-Mutuel, Cardroom, and Slots	<u>\$ 198,431,671</u>
State Revenue From Indian Gaming Compact	
Indian Gaming Compact ⁽⁵⁾	\$ 226,083,337
Indian Gaming Compact Reimbursements	268,731
Total State Revenue From Indian Gaming Compact	<u>\$ 226,352,068</u>
TOTAL STATE REVENUE GENERATED	<u><u>\$ 424,783,739</u></u>

⁽¹⁾ Escheated tickets from greyhound racing and jai alai gaming; and Racing Scholarship Funds are distributed to the Department of Education.

⁽²⁾ One-half of cardroom gross receipts is deposited into the General Revenue Fund.

⁽³⁾ Slot taxes are distributed to the Department of Education.

⁽⁴⁾ Both amounts include payments from: Gulfstream Park Racing and Casino, Mardi Gras Racetrack and Gaming Center, Isle Casino and Racing at Pompano Park, Flagler Dog Track and Magic City Casino, Miami Jai Alai, and South Florida Racing Association (Hialeah Park). Payment for two licensing periods (2012/2013 and 2013/2014) from Calder Casino and Race Course were received during this period.

⁽⁵⁾ Indian Gaming Compact payments are deposited into the General Revenue Fund.

DEPARTMENT OF BUSINESS & PROFESSIONAL REGULATION
DIVISION OF PARI-MUTUEL WAGERING
BALANCE SHEET
SPECIAL REVENUE FUND
FOR FISCAL YEAR ENDED JUNE 30, 2013

	<u>2013</u>		<u>2012</u>
ASSETS			
Cash with State Treasurer	\$ 1,314,252	\$	913,856
Investments at cost	6,377,222		4,070,808
Accounts receivable	385,298		149,919
Taxes receivable	14,531,005		3,145,363
Allowance for uncollectibles	(3,067)		(2,771)
Interest receivable	5,528		15,965
Due from state funds	87,479		
	<u>22,697,718</u>		<u>8,293,140</u>
TOTAL ASSETS	\$ 22,697,718	\$	8,293,140
 LIABILITIES & FUND EQUITY			
Liabilities:			
Accounts payable	\$ 90,584	\$	50,209
Accrued salaries	203,882		184,678
Due to other funds	423		44,212
Due to other state agencies	12,718,272		48,658
Due to general revenue	850,265		724,014
Compensated absences	4,024		8,182
	<u>13,867,451</u>		<u>1,059,953</u>
Total Liabilities	13,867,451		1,059,953
 Fund Equity			
Unreserved	<u>8,830,267</u>		<u>7,233,187</u>
Total Fund Equity	<u>8,830,267</u>		<u>7,233,187</u>
TOTAL LIABILITIES & FUND EQUITY	\$ 22,697,718	\$	8,293,140

The financial statements and notes are for informational purposes only.

DEPARTMENT OF BUSINESS AND PROFESSIONAL REGULATION
DIVISION OF PARI-MUTUEL WAGERING
STATEMENT OF REVENUES, EXPENDITURES & CHANGES IN FUND BALANCE - BUDGET & ACTUAL
SPECIAL REVENUE FUND
FOR FISCAL YEAR ENDED JUNE 30, 2013

	<u>FINAL BUDGET</u>	<u>2013 ACTUAL</u>	<u>VARIANCE</u>	<u>2012 ACTUAL</u>
REVENUES:				
Fees, Charges, Commissions and Sales	\$ 19,141,936.00	\$ 21,717,869.07	\$ 2,575,933.07	\$ 17,473,000.55
Licenses and Permits	653,083.00	623,443.58	(29,639.42)	956,447.83
Taxes	159,753,090.00	168,370,631.36	8,617,541.36	159,950,625.42
Fines, Forfeits, Judgments and Settlements	84,810.00	170,930.00	86,120.00	40,595.41
Interest and Dividends, Net	91,489.00	140,904.83	49,415.83	171,375.68
Refunds	250,000.00	205,096.63	(44,903.37)	334,060.39
Miscellaneous Receipts	288,864.00	128,550.26	(160,313.74)	103,185.61
Total Revenues	<u>180,263,272.00</u>	<u>191,357,425.73</u>	<u>11,094,153.73</u>	<u>179,029,290.89</u>
EXPENDITURES				
CURRENT OPERATING				
Salaries	6,628,314.00	5,954,060.56	674,253.44	6,019,164.68
Other Personal Services	1,646,166.00	1,258,379.43	387,786.57	1,247,540.46
Other Operating Expenditures	913,797.50	710,738.12	203,059.38	717,719.91
Operation of Motor Vehicles	81,743.00	71,407.37	10,335.63	71,777.65
Risk Management	126,433.00	126,433.00	-	132,067.00
State Attorney-Slots	169,617.00	169,102.00	515.00	169,010.00
PMW Lab Services	2,266,000.00	2,266,000.00	-	2,266,000.00
PMW Compliance System	309,976.00	309,918.00	58.00	225,863.00
Tr/DMS/HR SVCS/STW Contract	60,072.00	60,071.00	1.00	59,815.15
Cardroom Tax Distribution	2,000,000.00	1,643,208.00	356,792.00	1,564,240.20
Other Contracted Services	114,206.00	39,577.32	74,628.68	112,521.95
Compulsive Gambling Prevention	600,000.00	600,000.00	-	264,700.00
Racing Animal Med Research	100,000.00	78,664.01	21,335.99	91,597.75
OPERATING CAPITAL OUTLAY	53,815.00	45,926.10	7,888.90	4,173.75
Acquisition of Motor Vehicles	53,802.00	53,250.00	552.00	17,750.00
Assessment for Fingerprinting	460,400.00	261,910.50	198,489.50	323,536.25
Service Charge to General Revenue	2,900,000.00	2,977,323.93	(77,323.93)	2,762,338.28
Refunds	102,000.00	41,661.30	60,338.70	12,351.82
Transfer to FDLE Slots Investigation	229,965.00	-	229,965.00	95,900.82
Transfers to Other Funds	156,493,364.00	156,292,714.65	200,649.35	144,160,098.66
Transfers to General Revenue	22,300,000.00	16,800,000.00	5,500,000.00	18,974,992.00
Total Expenditures	<u>197,609,670.50</u>	<u>189,760,345.29</u>	<u>7,849,325.21</u>	<u>179,293,159.33</u>
Excess (Deficiency) of Revenues Over (Under) Expenditures	<u>(17,346,398.50)</u>	<u>1,597,080.44</u>	<u>3,244,828.52</u>	<u>(263,868.44)</u>
FUND BALANCE JULY 1, 2012	7,233,186.81	7,233,186.81	7,497,055.25	7,497,055.25
FUND BALANCE JUNE 30, 2013	<u>\$ (10,113,211.69)</u>	<u>\$ 8,830,267.25</u>	<u>\$ 10,741,883.77</u>	<u>\$ 7,233,186.81</u>
	(1)	(1)		

(1) Does not include budget of \$ 37,000,000 for category 190000 Investments. Actual expenditures for category 190000 were closed into the investment account.

The financial statements and notes are for informational purposes only.

CARDROOM, PARI-MUTUEL, AND
SLOT STATUTE MATRIX

STATUTE TOPIC	GREYHOUND	JAI ALAI	THOROUGHBRED	HARNESS	QUARTER HORSE
FEEES					
Daily License Fees On Live / On-track Handle	\$80 per race. <u>550.0951(1)(a), F.S.</u>	\$40 per game. <u>550.0951(1)(a), F.S.</u>	\$100 per race. <u>550.0951(1)(a), F.S.</u>	\$100 per race. <u>550.0951(1)(a), F.S.</u>	\$100 per race. <u>550.0951(1)(a), F.S.</u>
Daily License Fees On Simulcast Handle	\$80 per race, but not to exceed \$500 per day. <u>550.0951(1)(a), F.S.</u>	\$40 per game, but not to exceed \$500 per day. <u>550.0951(1)(a), F.S.</u>	\$100 per race, but not to exceed \$500 per day. <u>550.0951(1)(a), F.S.</u>	\$100 race, but not to exceed \$500 per day. <u>550.0951(1)(a), F.S.</u>	\$100 per race, but not to exceed \$500 per day. <u>550.0951(1)(a), F.S.</u>
OUTS (ESCHEATS)					
Live / On-track Handle	Paid to the state of Florida. <u>550.1645(2), F.S.</u>	Paid to the state of Florida. <u>550.1645(2), F.S.</u>	Retained by permitholder. <u>550.2633(3), F.S.</u>	Paid to Florida Standardbred Breeders' and Owners' Association (FSBOA). <u>550.26165(1) and 550.2633(2)(a), F.S.</u>	Paid to Florida Quarter Horse Breeders' and Owners Association (FQHBOA). <u>550.26165(1) and 550.2633(2)(b), F.S.</u> Escheats from Arabian races are paid to Florida Arabian Horse Racing Promotion Account. <u>550.2633(2)(c), F.S.</u>
TAXES					
Tax On Admissions	15% of admission charge, or 10 cents, whichever is greater, for entrance to facility and grandstand. <u>550.0951(2)(a), F.S.</u> No tax is imposed on free passes or complimentary cards. <u>550.0951(2)(b) and (c), F.S.</u>	15% of admission charge, or 10 cents, whichever is greater, for entrance to facility and grandstand. <u>550.0951(2)(a), F.S.</u> No tax is imposed on free passes or complimentary cards. <u>550.0951(2)(b) and (c), F.S.</u>	15% of admission charge, or 10 cents, whichever is greater, for entrance to facility and grandstand. <u>550.0951(2)(a), F.S.</u> No tax is imposed on free passes or complimentary cards. <u>550.0951(2)(b) and (c), F.S.</u>	15% of admission charge, or 10 cents, whichever is greater, for entrance to facility and grandstand. <u>550.0951(2)(a), F.S.</u> No tax is imposed on free passes or complimentary cards. <u>550.0951(2)(b) and (c), F.S.</u>	15% of admission charge, or 10 cents, whichever is greater, for entrance to facility and grandstand. <u>550.0951(2)(a), F.S.</u> No tax is imposed on free passes or complimentary cards. <u>550.0951(2)(b) and (c), F.S.</u>
Tax On Live / On-track Handle	5.5% of handle, except for charity performances which is 7.6% of handle. <u>550.0951(3)(b)1., F.S.</u>	Effective July 1, 2000, a permitholder may not be taxed at a higher rate than 2%. <u>550.0951(3)(d), F.S.</u>	0.5% of handle. <u>550.09515(2)(a), F.S.</u>	0.5% of handle. <u>550.09512(2)(a), F.S.</u>	1% of handle. <u>550.0951(3)(a), F.S.</u>
Tax On Simulcast Handle	Allows permitholders to receive greyhound races from out-of-state, and are subject to taxation under 550.0951 and 550.09511. <u>550.3551(4), F.S.</u>	Allows permitholders to receive jai alai games from out-of-state, and are subject to taxation under 550.0951 and 550.09511. <u>550.3551(4), F.S.</u>	Allows permitholders to receive horse races from out-of-state, and are subject to taxation under 550.0951, 550.09512, and 550.09515. <u>550.3551(3) through 550.3551(3)(c), F.S.</u>	Allows permitholders to receive horse races from out-of-state, and are subject to taxation under 550.0951, 550.09512, and 550.09515. <u>550.3551(3) through 550.3551(3)(c), F.S.</u>	Allows permitholders to receive horse races from out-of-state, and are subject to taxation under 550.0951, 550.09512, and 550.09515. <u>550.3551(3) through 550.3551(3)(c), F.S.</u>

This matrix represents a summary of 2012 Statutes. Please refer to the cite noted by statutory topic for specific language governing pari-mutuel wagering.

STATUTE TOPIC	GREYHOUND	JAI ALAI	THOROUGHBRED	HARNESS	QUARTER HORSE
Tax On Intertrack and Intertrack Simulcast Handle	5.5% of intertrack and intertrack simulcast handle; except for the intertrack handle from charity performances at a guest track within the market area of the host, the tax is 7.6%. <u>550.0951(3)(b)1 and 550.0951(3)(c)1, F.S.</u>	7.1% of intertrack and intertrack simulcast handle. <u>550.0951(3)(b)2. and 550.0951(3)(c)1., F.S.</u>	2% of intertrack handle. <u>550.0951(3)(c)1., F.S.</u>	3.3% of intertrack handle. <u>550.0951(3)(c)1., F.S.</u>	2% of intertrack handle. <u>550.0951(3)(c)1., F.S.</u>
	0.5% of intertrack and intertrack simulcast handle, if the guest is located outside market area of host and within market area of thoroughbred track conducting a live meet. <u>550.0951(3)(c)1., F.S.</u>	0.5% of intertrack and intertrack simulcast handle, if the guest is located outside market area of host and within market area of thoroughbred track conducting a live meet. <u>550.0951(3)(c)1., F.S.</u>	2.4% of intertrack simulcast handle. <u>550.0951(3)(c)1. and 550.09515(5), F.S.</u>	1.5% of intertrack simulcast handle. <u>550.0951(3)(c)1., F.S.</u>	2.4% of intertrack simulcast handle. <u>550.0951(3)(c)1. and 550.09515(5), F.S.</u>
	3.9% of intertrack and intertrack simulcast handle, for permitholders located in an area of the state where there are only 3 greyhound permitholders, located in 3 contiguous counties. <u>550.0951(3)(c)2., F.S.</u>	3.3% of intertrack and intertrack simulcast handle, if permitholder restricted from operating live on a year-round basis, and tax paid on intertrack handle exceeds that paid during 92/93 State Fiscal Year. <u>550.0951(3)(a), F.S.</u>	0.5% of intertrack and intertrack simulcast handle, if host and guest are thoroughbred permitholders, or if the guest is located outside market area of host and within market area of thoroughbred track conducting a live meet. <u>550.0951(3)(c)1., F.S.</u>	0.5% of intertrack and intertrack simulcast handle, if the guest is located outside market area of host and within market area of thoroughbred track conducting a live meet. <u>550.0951(3)(c)1., F.S.</u>	0.5% of intertrack and intertrack simulcast handle, if the guest is located outside market area of host and within market area of thoroughbred track conducting a live meet. <u>550.0951(3)(c)1., F.S.</u>
	3.9% of intertrack and intertrack simulcast handle, for greyhound permitholders located in the same market area specified in 550.615(9). <u>550.0951(3)(c)2., F.S.</u>	6.1% of intertrack and intertrack simulcast handle, for jai alai permitholders located in the market area as specified in 550.615(6) or (9), until the tax paid on intertrack handle in the current state fiscal year exceeds that paid during 92/93 State Fiscal Year, then tax on handle is 2.3%. <u>550.0951(3)(c)2., F.S.</u>	0.5% of intertrack simulcast handle, if guest track is a thoroughbred track located more than 35 miles from host track. <u>550.09515(5), F.S.</u>		
CHARITY PERFORMANCES					
	Maximum of five days. <u>550.0351(1), F.S.</u> Permitholders are allowed to conduct one additional day to be designated as "Greyhound Adopt-A-Pet Day." Proceeds are paid to "bona fide organizations" that promote the adoption of greyhounds. <u>550.1648(2), F.S.</u> Permitholders shall pay from any source, including charity performances, not less than 10% of tax credit from escheated tickets to a bona fide greyhound adoption program. <u>550.1647, F.S.</u>	Maximum of five days. <u>550.0351(1), F.S.</u> Permitholders are allowed to conduct two additional performances known as "Retired Jai Alai Players' Charity Day" for a fund to benefit retired jai alai players. <u>550.0351(8), F.S.</u>	Maximum of five days. <u>550.0351(1), F.S.</u> One additional scholarship day to tracks located in Hillsborough County for the benefit of Pasco-Hernando Community College. <u>550.0351(6)(a) and 550.0351(6)(b), F.S.</u>	Maximum of five days. <u>550.0351(1), F.S.</u>	Maximum of five days. <u>550.0351(1), F.S.</u>

This matrix represents a summary of 2012 Statutes. Please refer to the cite noted by statutory topic for specific language governing pari-mutuel wagering.

STATUTE TOPIC	GREYHOUND	JAI ALAI	THOROUGHBRED	HARNESS	QUARTER HORSE
TAX CREDITS & EXEMPTIONS					
(excluding charity performances, unless otherwise noted)	<p>Tax exemption of \$360,000 per state fiscal year, or \$500,000 for three permitholders that held a full live schedule in 1995, and closest to another state authorizing greyhound racing. <u>550.09514(1), F.S.</u></p> <p>Tax credit each state fiscal year equal to daily license fee on live races in previous state fiscal year. <u>550.0951(1)(a), F.S.</u></p> <p>Allows each permitholder that cannot utilize the full amount of the tax exemption or daily license fee tax credit to transfer the unused portion to a greyhound permitholder acting as a host track for intertrack wagering. <u>550.0951(1)(b), F.S.</u></p> <p>Tax credit each state fiscal year in an amount equal to the amount remitted in escheated tickets in prior state fiscal year. <u>550.1647, F.S.</u></p>	<p>A permitholder that has incurred tax on handle and admissions that exceeds its operating earnings is entitled to credit the excess amount of taxes against its next ensuing meets. <u>550.09511(1)(b), F.S.</u></p> <p>Tax credit each state fiscal year equal to 25% of amount remitted in escheated tickets in prior state fiscal year. Funds equal to the tax credit shall be paid by the permitholder to the National Association of Jai Alai Frontons. <u>550.1646, F.S.</u></p> <p>\$30,000 per performance exemption if live handle during the preceding state fiscal year was less than \$15 million. <u>This exemption applies to charity performances.</u> <u>550.09511(2)(a)1., F.S.</u></p> <p>A permitholder conducting fewer than 100 performances in any calendar year shall pay to the state the same aggregate amount of daily license fees on live games, admissions tax, and tax on live handle as that paid during the most recent prior calendar year in which at least 100 live performances were conducted. <u>550.09511(4), F.S.</u></p>	<p>Permitholders are allowed a credit of up to 1% of the paid taxes for the previous taxable year. The credit, if taken, is applied against taxes on live handle due for a taxable year under this section, and is paid directly to the Jockeys' Guild by the permitholders. <u>550.09515(6), F.S.</u></p>		

This matrix represents a summary of 2012 Statutes. Please refer to the cite noted by statutory topic for specific language governing pari-mutuel wagering.

STATUTE TOPIC	STATUTE REFERENCE	SUMMARY
FEEs		
Cardroom Table Fees	849.086(5)(d), F.S.	Annual fee for each facility is \$1,000 for each table to be operated at the cardroom.
TAXES		
Tax On Cardroom Gross Receipts	849.086(13)(a), F.S.	Each cardroom operator shall pay a tax to the state of 10% of the cardroom operation's monthly gross receipts. Pursuant to Section 849.086(13)(c), F.S., one-half credited to Pari-mutuel Wagering Trust Fund and one-half being credited to the General Revenue Fund.
Tax On Admissions	849.086(13)(b), F.S.	15% of admission charge, or 10 cents, whichever is greater, for entrance to the cardroom. This tax only applies if a separate admission fee is charged for entry into the cardroom facility. If a single admission fee is charged allowing entry to both or either the pari-mutuel facility and the cardroom facility, the tax is payable only once and shall be payable pursuant to Chapter 550.
FINES		
Administrative Fine	849.086(14)(c), F.S.	An administrative fine up to \$1,000 for each violation may be imposed on any person who has violated or failed to comply with the provisions of Section 849.086, F.S.
ANNUAL DISBURSEMENT TO COUNTIES AND MUNICIPALITIES		
Annual Disbursement To Counties and Municipalities	849.086(13)(h), F.S.	One-quarter of moneys deposited into the Pari-mutuel Wagering Trust Fund shall, by October 1 of each year, be distributed to the local counties or municipalities where the approved cardrooms are located.

This matrix represents a summary of 2012 Statutes. Please refer to the cite noted by statutory topic for specific language governing operation of cardrooms.

STATUTE TOPIC	STATUTE REFERENCE	SUMMARY
FEES		
Slot License Fee	551.106(1)(a), F.S.	Annual fee for each slot machine facility is \$2 million paid with the initial license application and annual thereafter on the anniversary date of the issuance of the initial license.
Compulsive or Addictive Gambling Prevention Program Fee	551.118(3), F.S.	Annual fee for each slot machine facility is \$250,000 paid at the same time the annual license fee is due, and annual thereafter.
TAXES		
Tax on Slot Revenue	551.106(2)(a) and 551.106(3), F.S.	The tax rate on slot machine revenues is 35%. Payment for the tax on slot machine revenues shall be remitted by 3 p.m. on the 5th day of each calendar month for taxes imposed and collected for the preceding calendar month. If the 5th day of the calendar month falls on a weekend, payments shall be remitted by 3 p.m. the first Monday following the weekend.
FINES		
Failure to Pay Slot Tax Fine	551.106(4), F.S.	Up to \$10,000 for each day tax payment is not remitted timely.
Civil Fine	551.107(11), F.S.	The division may impose a civil fine of up to \$5,000 for each violation of this chapter or the rules of the division.
False Statement Fine	551.109(1), F.S.	Up to a \$10,000 fine or civil penalty for any person who knowingly makes or causes to be made, or aids, assists, or procures another to make a false statement in any report, disclosure, application, or any document required under Chapter 551, or any rule adopted under Chapter 551.
Unauthorized Possession of Slot Machines Fine	551.109(2), F.S.	Up to a \$10,000 administrative fine or civil penalty for any person who possesses a slot machine without the license required by Chapter 551, or who possesses a slot machine at any location other than at the slot machines licensee's facility.
PENALTIES		
Slot Machine Licensee Civil Penalties	551.117, F.S.	Up to a \$100,000 civil penalty for each count or separate offense against the slot machine licensee for violation of Chapter 551, or any rule adopted by the division.

This matrix represents a summary of 2012 Statutes. Please refer to the cite noted by statutory topic for specific language governing slot operations.