

# Florida Department of Business & Professional Regulation

## Division of Pari-Mutuel Wagering 83<sup>rd</sup> Annual Report Fiscal Year 2013-2014

[www.myfloridalicense.com/dbpr/pmw](http://www.myfloridalicense.com/dbpr/pmw)



1940 North Monroe Street  
Tallahassee, Florida 32399  
Ph: 850.488.9130



**Rick Scott**  
*Governor*

**Ken Lawson**  
*Secretary*

**Leon M. Biegalski**  
*Director*

**DEPARTMENT OF BUSINESS AND PROFESSIONAL REGULATION  
 DIVISION OF PARI-MUTUEL WAGERING  
 COMPREHENSIVE ANNUAL REPORT  
 FISCAL YEAR ENDING JUNE 30, 2014  
[www.myfloridalicense.com/dbpr/pmw](http://www.myfloridalicense.com/dbpr/pmw)**

**INTRODUCTORY SECTION**

Overview and Explanation of Report Terminology .....	2
Division Overview.....	3
Events Shaping the 2013/2014 Racing/Gaming Season in Florida .....	6

**STATISTICAL SECTION**

**Pari-Mutuel Statistical Data**

Fiscal Years Comparative Data .....	7
Graphs - Historical Pari-Mutuel Wagering Activity.....	8
Components of Pari-Mutuel Handle From Performances.....	11
Total State Revenue From Performances .....	12
Total Regular and Charity/Scholarship Handle.....	13
Total Intertrack Wagering Handle by Guest.....	14
Charity and Scholarship Performances, Racing Scholarship Trust Fund, and Abandoned Winning Tickets.....	17

**Cardroom Statistical Data**

Cardroom Comparative Data.....	18
Components of Cardroom Revenue by Association.....	19

**Slot Statistical Data**

Slot Comparative Data.....	20
Revenue per Machine Compared to Average Number of Machines by Month.....	21

**DATA BY PERMITHOLDER/FACILITY**

Pari-Mutuel Map by Permitholder/Facility.....	24
Contact and Operating Information by Permitholder/Facility.....	25
Promotional Programs for Florida-Bred Horses.....	36
Drug Positives Statistical Data.....	37

**FINANCIAL STATEMENTS**

Summary of State Revenue from Cardroom, Pari-Mutuel, Slot Activities, and Indian Gaming Compact.....	38
Balance Sheet - Special Revenue Fund.....	39
Statement of Revenue, Expenditures & Changes in Fund Balance - Budget & Actual – Special Revenue Fund.....	40

**CARDROOM, PARI-MUTUEL, AND SLOT STATUTE MATRIX**

Summary of Pari-Mutuel Handle Distribution.....	41
Summary of Cardroom Distribution.....	44
Summary of Slot Distribution.....	45

# INTRODUCTION

## OVERVIEW

This annual report encompasses the fiscal year which began July 1, 2013, and ended June 30, 2014. This is the 83rd annual report in the series. The first annual report was issued for Fiscal Year 1931/1932, the initial year of legalized pari-mutuel wagering. In Florida, pari-mutuel wagering is authorized for horse racing, harness horse racing, quarter horse racing, greyhound racing, jai alai games, and cardroom poker games. Additionally, slot machine gaming at pari-mutuel facilities is authorized in Broward and Miami-Dade counties. Florida is one of the primary pari-mutuel states in the nation, and is the leading state in greyhound racing, as well as a major horse racing state. Florida is also the only state in the United States where live jai alai games are conducted. As of June 30, 2014, there were 30 pari-mutuel facilities located throughout the state, with one of the facilities holding both limited intertrack wagering and pari-mutuel wagering. This annual report, which is required by Florida law, is intended to inform the Governor, the Legislature, the industry, and other interested parties of wagering activities at authorized pari-mutuel facilities. The report is organized into five primary sections:

1. **Introductory Section** - An overview of the Division of Pari-Mutuel Wagering and a report of events that occurred impacting the division's oversight of permits or events that affected the operation of facilities.
2. **Statistical Section** – Details various cardroom, pari-mutuel, and slot statistical data by individual racing association or fronton.
3. **Data by Association/Facility** – Includes a map showing location of each association/permit that operated during the 2013/2014 Fiscal Year, contact and operating information by association/permit, promotional programs for Florida-bred horses and impermissible substance positives statistical data.
4. **Financial Section** - Official financial statements of the Division of Pari-Mutuel Wagering.
5. **Statute Matrix** - A table that summarizes the statutes regarding the taxes and fees applicable to pari-mutuel wagering and cardroom activity. It also includes a summary of the statutes regarding the taxes, fees, fines, and penalties with respect to slot machine gaming.

## EXPLANATION OF REPORT TERMINOLOGY

Florida law requires intertrack wagers to be combined with the wagering pools of the host or the broadcasting Florida track or fronton. The law also requires that the host take-out on intertrack wagers be the same as for on-track wagers; however, the distribution of the take-out may be different. The tax structure for on-track and intertrack wagering is explained in more detail in the statute matrix section.

Pursuant to Section 550.002(13), Florida Statutes, handle is defined as the aggregate contributions to pari-mutuel pools. For purposes of this report, the four types of handle detailed in this report are as follows:

- Live Ontrack: Handle from live races/games at the track/fronton.
- Simulcast: Handle from races/games originating from out-of-state and broadcast to a Florida track/fronton.
- Intertrack: Handle from where a Florida track/fronton (acting as host) broadcast live races/games to other Florida tracks/frontons.
- Intertrack Simulcast: Handle from rebroadcasting of simulcast signals received by a Florida track/fronton to other Florida tracks/frontons.

All intertrack and intertrack simulcast handle is detailed by the host permitholder in this report. These schedules reflect combined wagering statistics for all guest facilities that received broadcasts and conducted wagering and included in the wagering pools of the host. For host permitholders, a summary of intertrack handle components for each guest is shown in the statistical section of this report. The schedules of intertrack wagering handle by guest include data on wagers from intertrack handle and intertrack simulcast handle. Any paid attendance, admission tax, purses paid, or players' awards paid are detailed in the data by association/permit section of the report.

## **THE DIVISION OF PARI-MUTUEL WAGERING**

The Division of Pari-Mutuel Wagering is a program area of the Department of Business and Professional Regulation within the Executive Branch of Florida's government. The division is charged with regulating Florida's pari-mutuel, cardroom and slot machine gaming industries, as authorized by Chapters 550, 551, and Section 849.086, Florida Statutes, as well as collecting and safeguarding associated revenues due to the state. Authorized pari-mutuel events include harness racing, quarter horse racing, thoroughbred racing, greyhound racing, and jai alai. Pari-Mutuel Wagering was originally authorized by the Legislature in 1931. Since that time, the division has evolved from a racing commission into a professional regulatory organization overseeing a complex and dynamic industry located throughout the state. Additionally, the Division of Pari-Mutuel Wagering was designated by the Florida Legislature as the State Compliance Agency with the authority to carry out the state's oversight responsibilities in accordance with the provisions outlined in the Compact between the State of Florida and the Seminole Tribe of Florida.

### **OFFICE OF THE DIRECTOR**

The Office of the Director provides leadership, oversight, and administration of the six functional areas within the division. Specific responsibilities include budget planning, rule promulgation, policy development, legislative analysis of proposed legislation, strategic planning, fleet management, staff development and enforcement of administrative actions. Additionally, the Office of the Director ensures that all areas of the division operate in a cooperative effort to ensure efficient regulatory oversight of the industry.

The division's structure includes six functional areas which act under the management of the Office of the Director. These functional areas include Revenue and Financial Analysis, Auditing, Operations, Investigations, Slot Operations and State Compliance Agency. Each area focuses on a different aspect of regulation within the cardroom, pari-mutuel and slot machine gaming industry, as well as the state's Compact with the Seminole Tribe of Florida, in an effort to protect state revenues and maintain the public's confidence in the integrity of the wagering activity.

### **OFFICE OF OPERATIONS**

All individuals and businesses who work or conduct business at a racetrack, fronton, cardroom, or slot machine facility and who have access to wagers, restricted areas, and/or racing animals, must obtain an occupational license issued by the division. Every racing and cardroom occupational licensee is fingerprinted upon initial licensure and every five years thereafter; and every slot machine occupational licensee is fingerprinted upon initial licensure and every three years thereafter. Each set of fingerprints are submitted electronically to the Florida Department of Law Enforcement and Federal Bureau of Investigation for processing. During Fiscal Year 2013/2014, Operations' Licensing Section processed 21,332 occupational license applications for businesses and individuals, of which 1,564 were related to cardroom operations; 19,768 were related to racing operations; and 5,325 were related to slot machine operations. The decline in the number of applications processed during Fiscal Year 2013/2014, is due to the elimination of one-year occupational licenses for pari-mutuel and cardroom operations that began during Fiscal Year 2011/2012. The Office of Operations also processes applications for the issuance of all pari-mutuel permitholder Annual Operating Dates Licenses, Cardroom Operator Licenses and Slot Machine Licenses to authorized facilities.

The Office of Operations is also responsible for ensuring that the day-to-day operation of races and games are conducted in accordance with Florida's pari-mutuel statutes and rules. The State Stewards monitor each race/game and conduct inquiries and hearings for alleged violations of the state's pari-mutuel statutes and rules. The Stewards and Hearing Officers issued 67 rulings and 237 consent orders; assessed fines totaling \$80,950; and imposed 19 license suspensions for violations in Fiscal Year 2013/2014.

Operations' staff collects urine and blood samples from racing animals which are sent to the University of Florida, College of Medicine Racing Laboratory for analysis. The Racing Laboratory performs its services under an annual contract with the division. State veterinarians and veterinary assistants collected 79,573 samples that included 63,757 greyhound urine samples and 15,816 horse urine and blood samples. Additionally, division investigators submitted 27 investigative samples during Fiscal Year 2013/2014. There were 250 positive findings of impermissible substances in the samples collected.

## **OFFICE OF AUDITING**

The Office of Auditing is responsible for conducting various audits to ensure the integrity of wagering activity and protect the wagering public by ensuring that cardroom, pari-mutuel and slot machine wagering is conducted in compliance with the Florida Statutes and Florida Administrative Code. Such compliance issues include pari-mutuel broadcast exchanges; verification that takeout/commissions are consistent with notification requirements; interstate wagering restrictions; identification of fraudulent activity; verification that statutory accounting procedures are utilized; oversight of the commingling of wagering pools; transmission of pari-mutuel information; proper payments to winning pari-mutuel patrons; approval of totalisator security plans and software upgrades. Additionally, the auditing staff maintains primary oversight for cardroom operations, which includes: auditing internal control procedures; auditing jackpot accounts; monitoring daily operations; coordinating inspections; and auditing for compliance. The auditing team is responsible for communicating with the licensed totalisator companies, and for the input of pari-mutuel handle and wagering information into the division's Central Monitoring System (CMS).

During Fiscal Year 2013/2014, the auditing team conducted 19 greyhound purse audits, 21 greyhound adoption proceeds audits, 24 mutuels audits, 32 escheat audits, 21 cardroom audits, 21 surveillance tape audits, 20 jackpot audits, eight slot audits, two players' club audits, one breeders' awards audit and 53 totalisator system malfunction reports. Auditing's cardroom coordinators audited 148 tournament and jackpot proposals, 844 internal control submissions, six new card game proposals, 23 revised cardroom floor plans and reviewed 40 cardroom internal audits.

## **OFFICE OF INVESTIGATIONS**

The Office of Investigations examines statutory and rule violations that occur at pari-mutuel facilities, cardrooms, and slot machine gaming locations. Investigative staff is responsible for investigating Class I drug positives analyzed and identified by the University of Florida, College of Medicine Racing Laboratory and deaths of racing animals that occur at pari-mutuel facilities. The investigations vary from patron complaints, complaints of animal cruelty, to the use of performance altering medications and/or illegal substances during races. A case may result in issuance of a warning letter, consent order, administrative fine, license suspension, hearing before a designated hearing officer or referral to either regulatory or law enforcement agencies for criminal prosecution. During Fiscal Year 2013/2014, there were 630 investigations conducted.

The investigation staff also conducts background examinations of potential permitholders which involves an in-depth review of the applicant's financial records in order to ensure compliance with Sections 550.054, 550.1815 and 849.086, of the Florida Statutes. Additionally, investigators perform background reviews of Pari-Mutuel Wagering Occupational License requests from applicants with criminal records requesting a waiver from the Division Director in accordance with Section 550.105, Florida Statutes.

The investigation staff also conducted 5,401 in-depth inspections of pari-mutuel and slot machine facilities, including cardrooms, greyhound kennels and horse stables; both prior to opening as well as throughout the operating year.

## **OFFICE OF SLOT OPERATIONS**

The Slot Operations' staff is responsible for overseeing state personnel located at each of the four pari-mutuel facilities in Broward County and each of the four pari-mutuel facilities in Miami-Dade County that have slot machine gaming. To ensure the integrity of slot machine gaming activity, the Slot Operations' staff oversees the day-to-day operations at the slot machine facilities, performs daily revenue reconciliations, verifies that every slot machine has been certified by an independent testing laboratory, issues slot machine occupational licenses to individuals, and ensures slot machine gaming activity is in compliance with the requirements of Chapter 551, Florida Statutes, Chapter 61D-14, Florida Administrative Code, as well as the internal controls of the individual facilities.

During Fiscal Year 2013/2014, the Slot Operations' staff completed 12,689 inspections. Of those, 337 items were found to be non-compliant, of which five (5) were turned over to Investigations and to the Department's Office of the General Counsel for formal proceedings. Slot machine facilities were notified of 337 observations so that appropriate internal action, including employee disciplinary action, advanced training and/or re-training of facility personnel could occur. There were 47 individual and facility Consent Orders issued at the regional level totaling \$10,150 in fines or final warning notices.

There were 1,274 shipments of authorized slot machines and components, which required the verification of 1,662 slot machines and 11,646 parts. The Slot Operations' staff authorized and monitored 10,019 slot machine conversions, denomination and/or game theme changes, slot machine relocations and other related slot machine changes.

## **OFFICE OF REVENUE AND FINANCIAL ANALYSIS**

The Revenue and Financial Analysis staff is responsible for safeguarding and accounting for state revenues in accordance with Florida Statutes and the Florida Administrative Code, as it relates to cardroom, pari-mutuel and slot gaming activities. The staff develops revenue projections for the Revenue Estimating Conferences, maintains cash flow statements for timely transfer to the State's General Revenue Fund and to the Education Enhancement Trust Fund, provides oversight of the division's budget, develops the annual report, and determines fiscal impacts on proposed legislation impacting the industry.

During Fiscal Year 2013/2014, \$218,401,652 in state revenues pertaining to cardroom, pari-mutuel and slot machine gaming were collected. The Revenue and Financial Analysis staff also reconciled 747 permitholder monthly remittance reports, conducted 26 charity day audits and 30 uniform annual report audits. The Revenue and Financial Analysis staff compiles statistical information for cardroom, pari-mutuel and slot machine gaming, and performs analyses requested by the department, the Executive Office of the Governor, the Legislature and the industry.

## **STATE COMPLIANCE AGENCY**

The Gaming Compact between the Seminole Tribe of Florida and the State of Florida, 75 FR 38833, was executed by the Governor on April 7, 2010, and ratified by the United States Department of the Interior on July 7, 2010. Pursuant to Section 285.710, Florida Statutes, the Division of Pari-Mutuel Wagering was designated by the Florida Legislature as the State Compliance Agency with the authority to carry out the state's oversight responsibilities in accordance with the provisions outlined in the Compact. The Seminole Tribe of Florida operates seven (7) casinos located in Broward, Hillsborough, Collier, Glades and Hendry counties.

During Fiscal Year 2013/2014, the State Compliance Agency completed 76 inspections of tribal gaming facilities spanning over 733 man-hours. Additionally, \$237,312,301 in revenue sharing with the Tribe was collected. In March 2014, \$6,990,000 was distributed to local governments, including both counties and municipalities, as required by Section 285.710, Florida Statutes.

The Miccosukee Tribe was not made a part of this Compact, and therefore, continue to operate exclusively under federal jurisdiction. For additional information on the Miccosukee's gaming operations, contact the National Indian Gaming Commission, [www.nigc.gov](http://www.nigc.gov), or the United States Department of Interior, 1441 L Street N.W., Suite 9100, Washington, D.C. 20005-3584, Telephone 202.632.7003.

## **Events Shaping the 2013/2014 Racing/Gaming Season in Florida**

- Dania Jai Alai Casino began operation with 549 slot machines in Broward County on February 20, 2014, and reopened their cardroom with 26 tables.
- Hialeah Casino began operation with 882 slot machines in Dade County on August 14, 2013, and opened their cardroom with 25 tables.



# STATISTICAL SECTION

## FISCAL YEARS COMPARATIVE DATA

Beginning with the 1931/1932 Fiscal Year, the state began collecting taxes on pari-mutuel wagering. In most recent years, pari-mutuel handle has steadily declined. During that initial year, the pari-mutuel industry operated 462 racing days in Florida, which resulted in state revenue of \$737,301; total paid attendance of 1,157,161; and total pari-mutuel handle of \$17,365,424.

Since Fiscal Year 1931/1932, approximately \$74 billion in pari-mutuel handle wagered resulted in \$4.36 billion in state revenue. This fiscal year, the pari-mutuel industry operated 3,582 racing days, which resulted in state revenue of \$13,785,681; total paid attendance of 383,864; and total pari-mutuel handle of \$850,136,735.

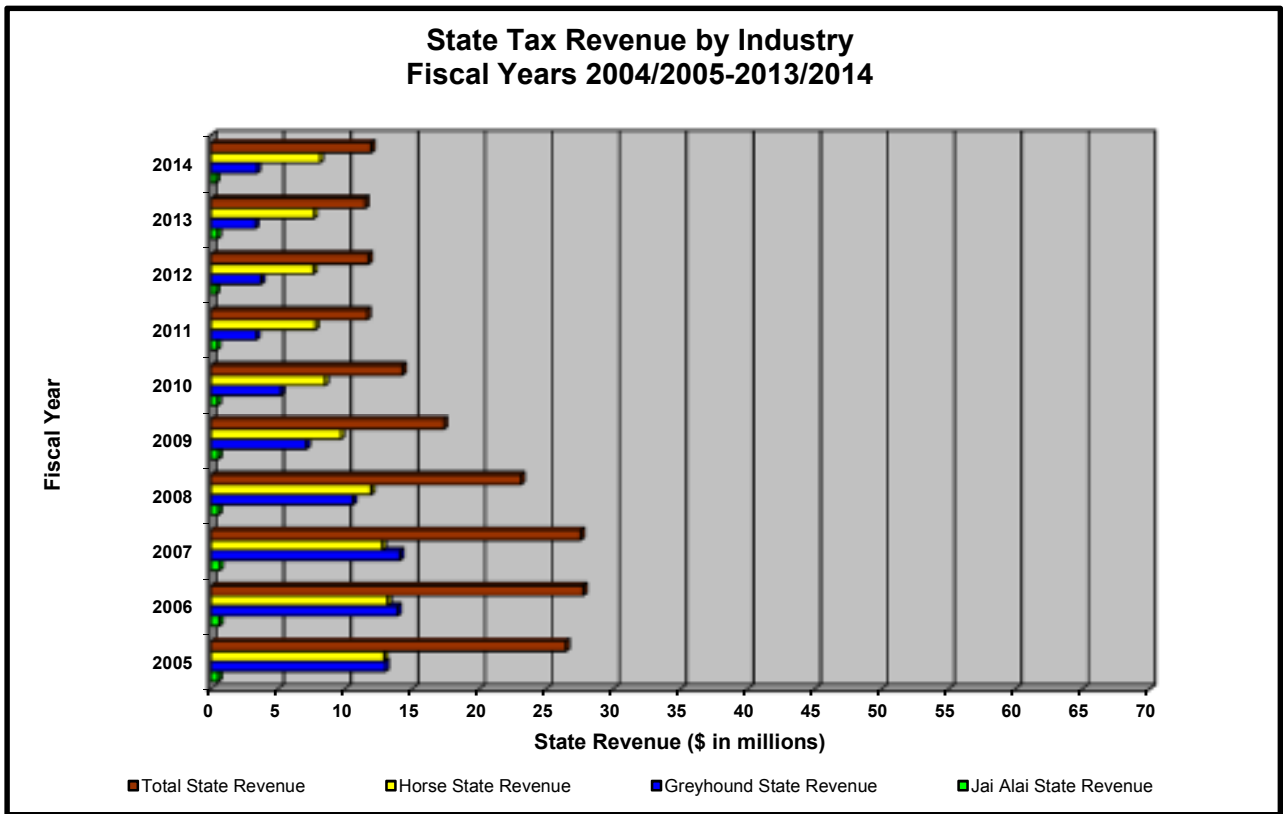
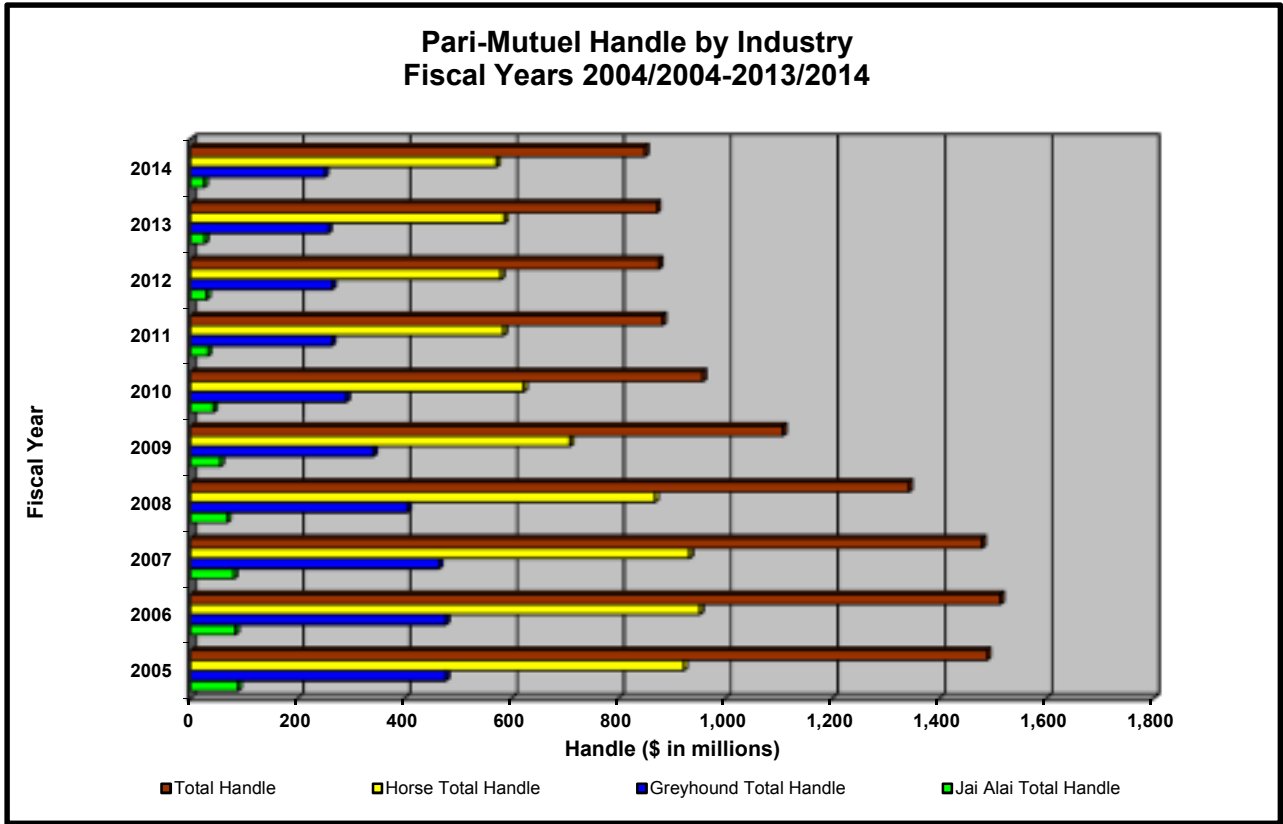
Over the last 10 years, pari-mutuel wagering has experienced a 42.9 percent decline in handle, and total state revenue has decreased 58.5 percent, along with a 19 percent decrease in the number of racing days. Shown below is a summary of pari-mutuel handle and state revenue for Fiscal Years 2004/2005 through 2013/2014.

### PARI-MUTUEL HANDLE AND STATE REVENUE SUMMARY

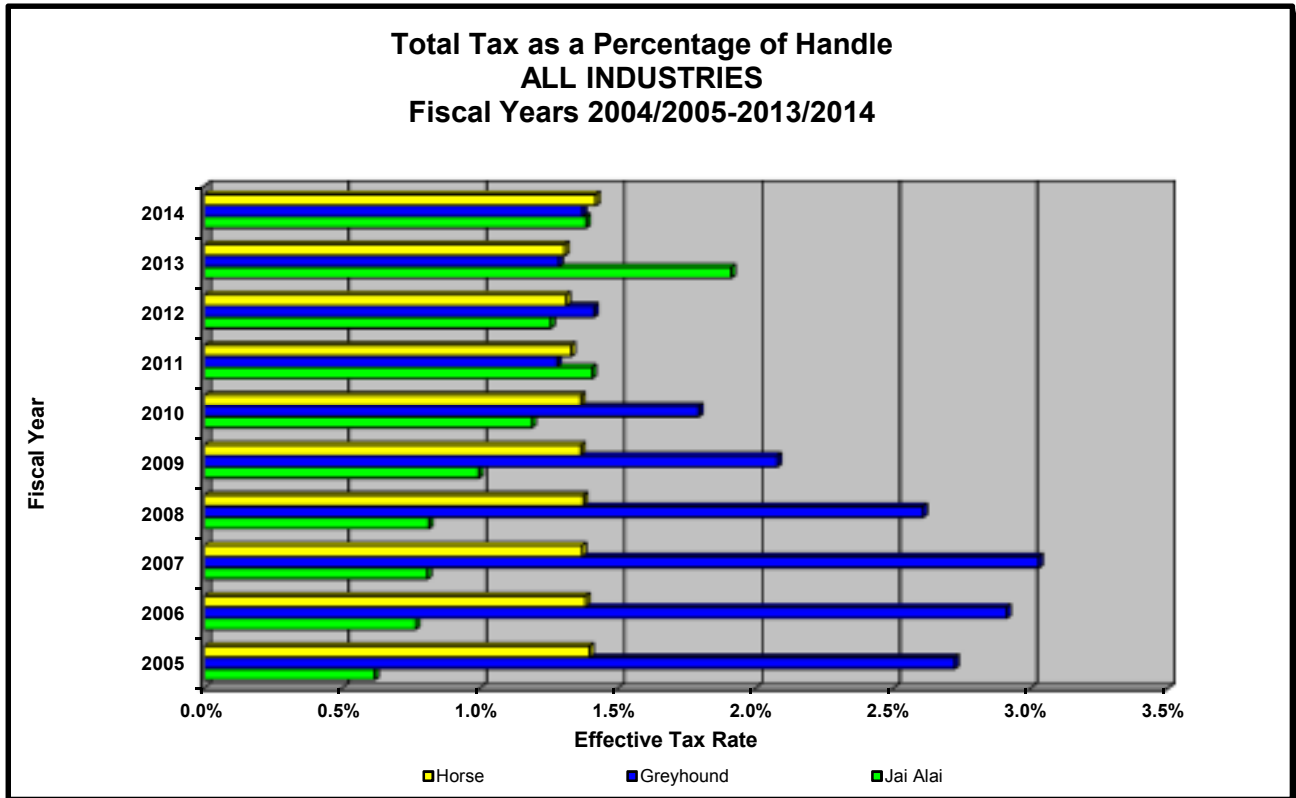
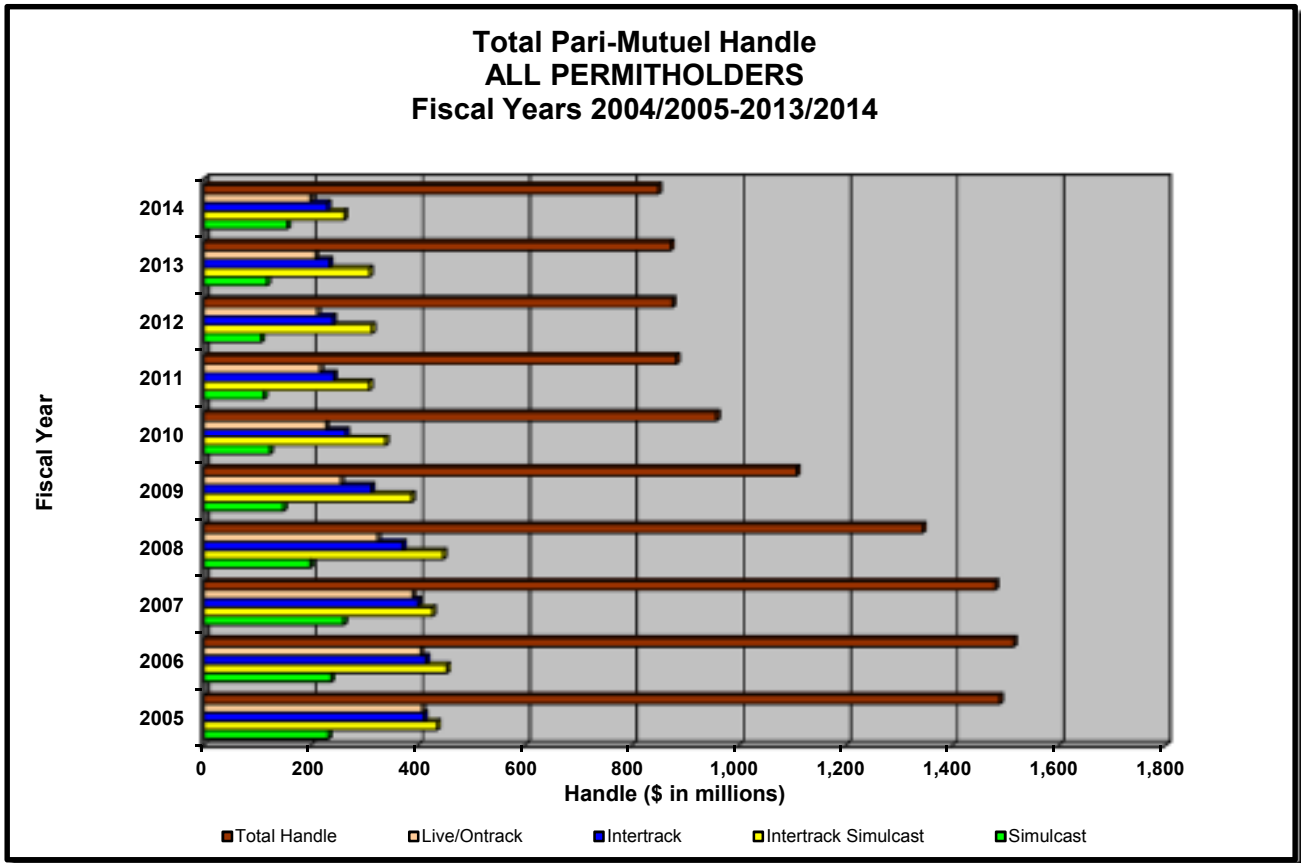
<i>Fiscal Year</i>	<i>Number of Racing Days</i>	<i>Total Paid Attendance</i>	<i>Total Pari-Mutuel Handle</i>	<i>Total State Revenue <sup>(1)</sup></i>	<i>State Revenue as a Percent of Handle</i>
2004/2005	4,424	2,135,044	\$1,489,330,477	\$33,199,857	2.23%
2005/2006	4,993	2,066,192	\$1,514,758,761	\$35,178,969	2.32%
2006/2007	5,592	2,351,126	\$1,480,427,370	\$30,214,151	2.04%
2007/2008	4,857	1,419,748	\$1,343,912,504	\$25,657,727	1.91%
2008/2009	4,364	722,699	\$1,108,401,006	\$19,814,027	1.79%
2009/2010	4,167	614,889	\$ 958,537,395	\$16,706,611	1.74%
2010/2011	3,633	507,804	\$ 883,381,429	\$13,640,020	1.54%
2011/2012	3,602	469,497	\$ 876,146,485	\$13,802,723	1.58%
2012/2013	3,628	430,707	\$ 872,272,660	\$13,200,709	1.51%
2013/2014	3,582	383,864	\$ 850,136,735	\$13,785,681	1.62%

(1) Beginning 2006/2007, this figure includes state revenue from pari-mutuel performances and other state revenue, and does not include state revenue from cardroom and slot operations.

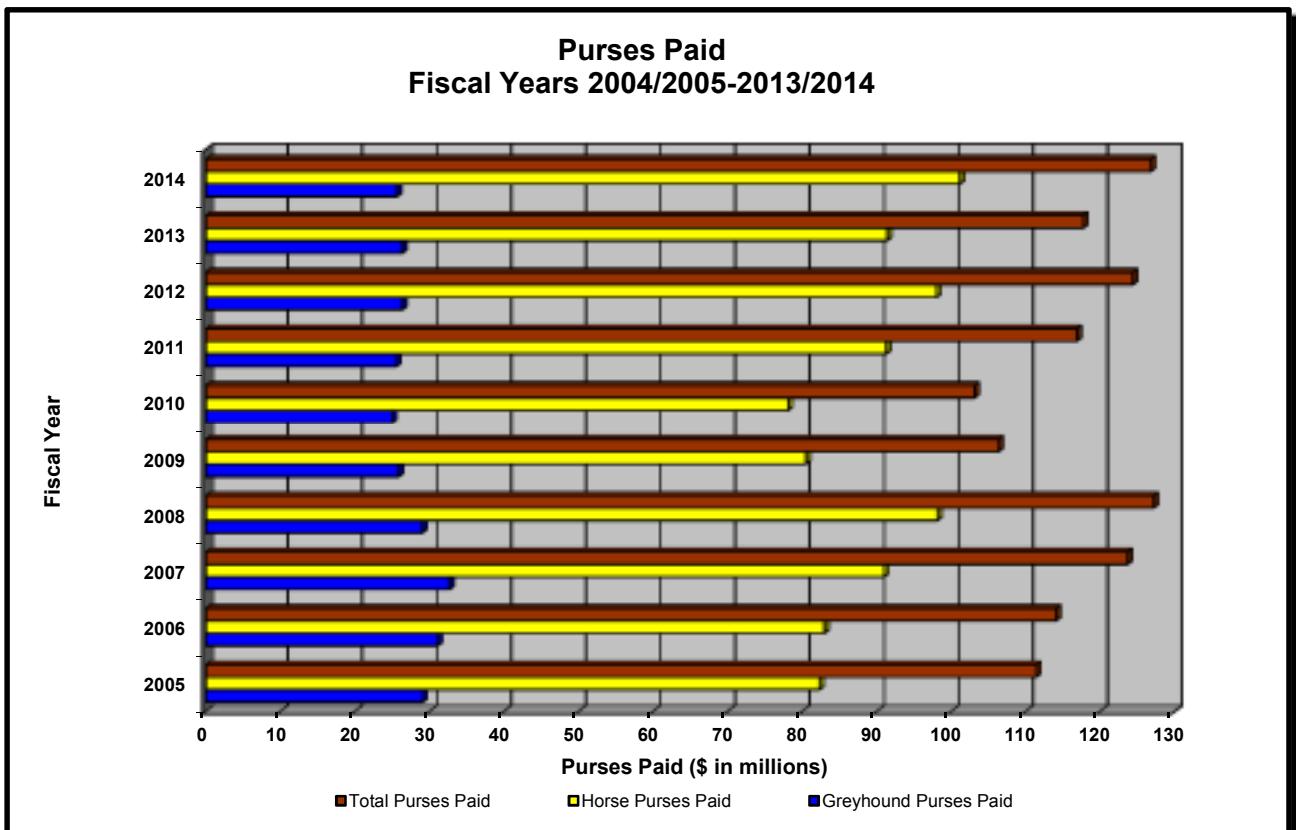
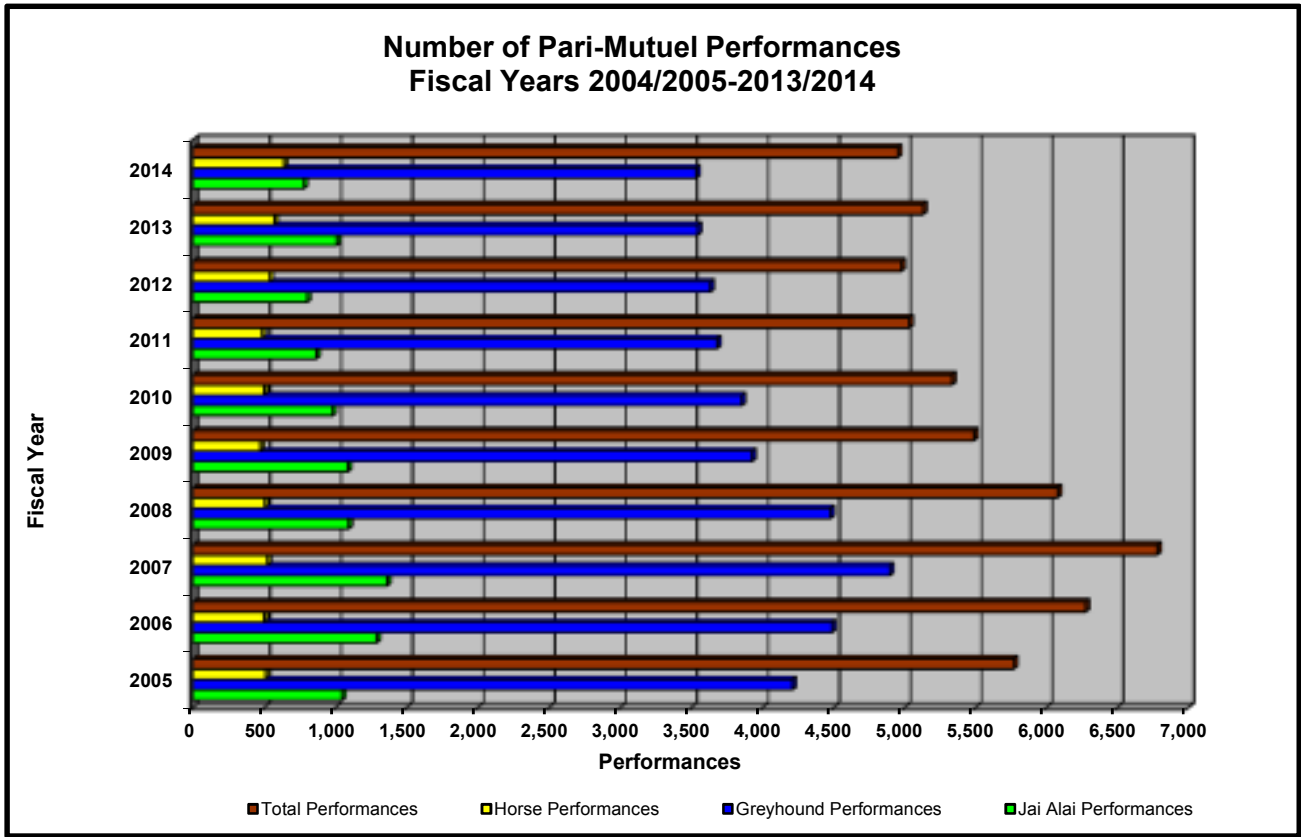
# HISTORICAL PARI-MUTUEL WAGERING ACTIVITY



# HISTORICAL PARI-MUTUEL WAGERING ACTIVITY



# HISTORICAL PARI-MUTUEL WAGERING ACTIVITY



**COMPONENTS OF PARI-MUTUEL HANDLE FROM PERFORMANCES**

Fiscal Year 2013/2014	Total Paid To					Total Handle
	Daily License Fee	Tax on Handle	Charities	Permitholder Revenues From Pari-Mutuel Handle	Public Pool	
<b>Greyhound Racing Permitholders</b>						
Daytona Beach Kennel Club, Inc.	\$30,920	\$15,258	\$32,037	\$2,265,069	\$6,249,814	\$8,593,098
Derby Lane (St. Petersburg Kennel Club, Inc.)	112,720	451,476	142,786	4,994,366	18,244,453	23,945,801
Ebro Greyhound Park	2,560	0	1,999	479,422	1,023,330	1,507,311
Flagler Dog Track	146,520	557,518	66,857	3,729,217	15,380,746	19,880,858
H&T Gaming, Inc., d/b/a Mardi Gras Racetrack	34,100	157,529	38,202	2,128,533	8,276,678	10,635,042
Jacksonville Kennel Club, Inc.	24,000	34,786	100,286	3,030,689	10,277,642	13,467,403
Jefferson County Kennel Club, Inc. (A)	0	0	0	0	0	0
License Acquisitions, LLC, d/b/a Palm Beach Greyhound Racing	18,000	11,090	77,395	3,441,739	11,450,670	14,998,894
Mardi Gras Racetrack and Gaming Center	16,020	25,784	36,280	1,671,495	6,120,779	7,870,358
Melbourne Greyhound Park, LLC	0	0	0	27,697	62,862	90,559
Naples-Ft. Myers Greyhound Track	105,840	226,220	46,056	3,706,343	13,602,307	17,686,766
Orange Park Kennel Club, Inc.	20,400	23,123	80,630	2,733,989	9,022,746	11,880,888
Palm Beach Kennel Club	130,560	512,059	100,898	10,081,550	34,728,527	45,553,594
Penn Sanford, LLC, d/b/a Sanford-Orlando Kennel Club	7,520	0	18,733	1,508,833	5,427,517	6,962,603
Pensacola Greyhound Racing, LLP	1,024	281	0	249,966	751,825	1,003,096
SOKC, LLC, d/b/a Sanford-Orlando Kennel Club	15,840	13,738	16,465	1,945,561	7,033,729	9,025,333
Sarasota Kennel Club, Inc.	28,130	35,235	33,054	1,599,297	5,231,564	6,927,280
St. Johns Greyhound Park	37,200	94,396	90,856	5,151,765	17,295,285	22,669,502
Tampa Greyhound Track	103,120	382,157	102,450	4,460,838	15,983,043	21,031,608
West Volusia Racing, Inc.	40,629	26,198	31,291	2,042,564	5,694,018	7,834,700
<b>Total Greyhound Permitholders</b>	<b>\$875,103</b>	<b>\$2,566,848</b>	<b>\$1,016,275</b>	<b>\$55,248,933</b>	<b>\$191,857,535</b>	<b>\$251,564,694</b>
<b>Jai Alai Permitholders</b>						
Dania Jai Alai	\$113,320	\$0	\$1,670	\$2,513,569	\$7,938,240	\$10,566,799
Dania Summer Jai Alai	52,040	0	1,370	1,000,427	3,175,878	4,229,715
Ft. Pierce Jai Alai	13,440	0	0	63,617	203,537	280,594
Hamilton Jai Alai and Poker (A)	0	0	0	0	0	0
Miami Jai Alai	72,960	0	9,519	1,422,692	4,297,094	5,802,265
Ocala Poker and Jai Alai	13,120	0	0	(13,120)	0	0
Orlando Jai Alai	30,800	0	0	88,826	373,952	493,578
Summer Jai Alai	62,400	0	6,991	1,090,548	3,312,123	4,472,062
West Flagler Associates, LTD., d/b/a Magic City Jai Alai (A)	0	0	0	0	0	0
<b>Total Jai Alai Permitholders</b>	<b>\$358,080</b>	<b>\$0</b>	<b>\$19,550</b>	<b>\$6,166,559</b>	<b>\$19,300,824</b>	<b>\$25,845,013</b>
<b>Thoroughbred Racing Permitholders</b>						
Calder Race Course, Inc.	\$207,400	\$1,038,849	\$207,055	\$17,368,294	\$69,933,526	\$88,755,124
Gulfstream Park Thoroughbred After Racing Program, Inc.	500	11	0	(100)	1,848	2,259
Gulfstream Park Racing Association, Inc.	336,900	2,970,049	159,124	54,820,930	221,433,840	279,720,843
Tampa Bay Downs, Inc.	270,500	1,864,242	75,492	23,112,893	94,532,379	119,855,506
Tropical Park, LLC.	104,000	455,865	58,356	7,692,179	31,792,984	40,103,384
<b>Total Thoroughbred Permitholders</b>	<b>\$919,300</b>	<b>\$6,329,016</b>	<b>\$500,027</b>	<b>\$102,994,196</b>	<b>\$417,694,577</b>	<b>\$528,437,116</b>
<b>Harness Racing Permitholders</b>						
Isle Casino and Racing at Pompano Park	\$302,800	\$468,074	\$8,438	\$8,706,856	\$33,060,857	\$42,547,025
<b>Quarter Horse Racing Permitholders</b>						
Gretna Racing, LLC	\$30,400	\$853	\$0	(\$17,566)	\$71,609	\$85,296
Hamilton Downs Horsetrack, LLC	16,000	1	0	(\$15,997)	26	30
Ocala Breeders' Sales Company, Inc.	200	104	0	\$3,099	12,536	15,939
South Florida Racing Association, LLC (Hialeah Park)	34,200	17,801	0	\$266,296	1,320,472	1,638,769
South Marion Real Estate Holdings, LLC	900	29	0	(\$466)	2,390	2,853
<b>Total Quarter Horse Permitholders</b>	<b>\$81,700</b>	<b>\$18,788</b>	<b>\$0</b>	<b>\$235,366</b>	<b>\$1,407,033</b>	<b>\$1,742,887</b>
<b>TOTAL FOR ALL PERMITHOLDERS</b>	<b>\$2,536,983</b>	<b>\$9,382,726</b>	<b>\$1,544,290</b>	<b>\$173,351,910</b>	<b>\$663,320,826</b>	<b>\$850,136,735</b>

(A) Permitholder applied for and received license to conduct live performances during 2013/2014, but no live performances were held during 2013/2014.

**TOTAL STATE REVENUE FROM PERFORMANCES**

Fiscal Year 2013/2014	LIVE			SIMULCAST			ITW	ITW SIM	CHARITY PERFORMANCES	TOTAL TAXES AND FEES COLLECTED (A)
	Tax on Handle	Daily License Fee	Total Live Taxes and Fees Collected	Tax on Handle	Daily License Fee	Total Simulcast Taxes and Fees Collected	Tax on Handle	Tax on Handle	Daily License Fee	
<b>Greyhound Racing Permitholders</b>										
Daytona Beach Kennel Club, Inc.	\$5,907	\$9,360	\$15,267	\$2,185	\$4,000	\$6,185	\$7,166	\$0	\$17,560	\$46,178
Derby Lane (St. Petersburg Kennel Club, Inc.)	214,910	98,320	313,230	0	0	0	236,566	0	14,400	564,196
Ebro Greyhound Park	0	0	0	0	0	0	0	0	0	2,560
Flagler Dog Track	49,039	78,960	127,999	52,493	54,000	106,493	103,657	352,329	13,560	704,038
H&T Gaming, Inc., d/b/a Mardi Gras Racetrack	4,777	6,480	11,257	42,860	18,000	60,860	7,809	102,083	9,620	191,629
Jacksonville Kennel Club, Inc.	13,375	9,600	22,975	0	0	0	21,411	0	14,400	58,786
Jefferson County Kennel Club, Inc. (B)	0	0	0	0	0	0	0	0	0	0
License Acquisitions, LLC, d/b/a Palm Beach Greyhound Racing	5,032	3,600	8,632	0	0	0	6,058	0	14,400	29,090
Mardi Gras Racetrack and Gaming Center	5,704	4,320	10,024	4,068	2,000	6,068	5,636	10,376	9,700	41,804
Melbourne Greyhound Park, LLC	0	0	0	0	0	0	0	0	0	0
Naples-Ft. Myers Greyhound Track	144,606	95,920	240,526	0	0	0	81,614	0	9,920	332,060
Orange Park Kennel Club, Inc.	8,511	6,000	14,511	0	0	0	14,612	0	14,400	43,523
Palm Beach Kennel Club	219,344	116,160	335,504	0	0	0	292,715	0	14,400	642,619
Penn Sanford, LLC, d/b/a Sanford-Orlando Kennel Club	0	0	0	0	0	0	0	0	7,520	7,520
Pensacola Greyhound Racing, LLP	281	1,024	1,305	0	0	0	0	0	0	1,305
SOKC, LLC, d/b/a Sanford-Orlando Kennel Club	6,711	8,320	15,031	0	0	0	7,027	0	7,520	29,578
Sarasota Kennel Club, Inc.	29,512	19,810	49,322	0	0	0	5,723	0	8,320	63,365
St. Johns Greyhound Park	39,646	22,800	62,446	0	0	0	54,750	0	14,400	131,596
Tampa Greyhound Track	187,700	88,720	276,420	0	0	0	194,457	0	14,400	485,277
West Volusia Racing, Inc.	12,973	17,200	30,173	3,751	6,109	9,860	9,474	0	17,320	66,827
<b>Total Greyhound Permitholders</b>	<b>\$948,028</b>	<b>\$586,594</b>	<b>\$1,534,622</b>	<b>\$105,357</b>	<b>\$84,109</b>	<b>\$189,466</b>	<b>\$1,048,675</b>	<b>\$464,788</b>	<b>\$204,400</b>	<b>\$3,441,951</b>
<b>Jai Alai Permitholders</b>										
Dania Jai Alai	\$0	\$112,360	\$112,360	\$0	\$0	\$0	\$0	\$0	\$960	\$113,320
Dania Summer Jai Alai	0	51,080	51,080	0	0	0	0	0	960	52,040
Ft. Pierce Jai Alai	0	13,120	13,120	0	0	0	0	0	320	13,440
Hamilton Jai Alai and Poker (B)	0	0	0	0	0	0	0	0	0	0
Miami Jai Alai	0	70,080	70,080	0	0	0	0	0	2,880	72,960
Ocala Poker and Jai Alai	0	13,120	13,120	0	0	0	0	0	0	13,120
Orlando Jai Alai	0	29,200	29,200	0	0	0	0	0	1,600	30,800
Summer Jai Alai	0	60,000	60,000	0	0	0	0	0	2,400	62,400
West Flagler Associates, LTD., d/b/a Magic City Jai Alai (B)	0	0	0	0	0	0	0	0	0	0
<b>Total Jai Alai Permitholders</b>	<b>\$0</b>	<b>\$348,960</b>	<b>\$348,960</b>	<b>\$0</b>	<b>\$0</b>	<b>\$0</b>	<b>\$0</b>	<b>\$0</b>	<b>\$9,120</b>	<b>\$358,080</b>
<b>Thoroughbred Racing Permitholders</b>										
Calder Race Course, Inc.	\$28,122	\$81,600	\$109,722	\$105,848	\$119,000	\$224,848	\$109,753	\$795,126	\$6,800	\$1,246,249
Gulfstream Park Thoroughbred After Racing Program, Inc.	11	500	511	0	0	0	0	0	0	511
Gulfstream Park Racing Association, Inc.	277,768	149,600	427,368	412,780	179,000	591,780	588,264	1,691,237	8,300	3,306,949
Tampa Bay Downs, Inc.	70,347	83,300	153,647	82,405	179,000	261,405	310,524	1,400,966	8,200	2,134,742
Tropical Park, LLC.	14,463	39,600	54,063	58,033	57,500	115,533	49,351	334,018	6,900	559,865
<b>Total Thoroughbred Permitholders</b>	<b>\$390,711</b>	<b>\$354,600</b>	<b>\$745,311</b>	<b>\$659,066</b>	<b>\$534,500</b>	<b>\$1,193,566</b>	<b>\$1,057,892</b>	<b>\$4,221,347</b>	<b>\$30,200</b>	<b>\$7,248,316</b>
<b>Harness Racing Permitholders</b>										
Isle Casino and Racing at Pompano Park	\$16,241	\$116,400	\$132,641	\$57,226	\$179,000	\$236,226	\$37,048	\$357,559	\$7,400	\$770,874
<b>Quarter Horse Racing Permitholders</b>										
Gretna Racing, LLC	\$853	\$30,400	\$31,253	\$0	\$0	\$0	\$0	\$0	\$0	\$31,253
Hamilton Downs Horsetrack, LLC	1	16,000	16,001	0	0	0	0	0	0	16,001
Ocala Breeders' Sales Company, Inc.	104	200	304	0	0	0	0	0	0	304
South Florida Racing Association, LLC (Hiialeah Park)	14,574	34,200	48,774	0	0	0	3,227	0	0	52,001
South Marion Real Estate Holdings, LLC	29	900	929	0	0	0	0	0	0	929
<b>Total Quarter Horse Permitholders</b>	<b>\$15,561</b>	<b>\$81,700</b>	<b>\$97,261</b>	<b>\$0</b>	<b>\$0</b>	<b>\$0</b>	<b>\$3,227</b>	<b>\$0</b>	<b>\$0</b>	<b>\$100,488</b>
<b>TOTAL FOR ALL PERMITHOLDERS</b>	<b>\$1,370,541</b>	<b>\$1,488,254</b>	<b>\$2,858,795</b>	<b>\$821,649</b>	<b>\$797,609</b>	<b>\$1,619,258</b>	<b>\$2,146,842</b>	<b>\$5,043,694</b>	<b>\$251,120</b>	<b>\$11,919,709</b>

(A) The amounts shown are taxes and fees collected after the application of any applicable tax credits, and do not include admissions tax.

(B) Permitholder applied for and received license to conduct live performances during 2013/2014, but no live performances were held during 2013/2014.

**TOTAL REGULAR AND CHARITY/SCHOLARSHIP HANDLE**

Fiscal Year 2013/2014	ON-TRACK		INTERTRACK		TOTAL REGULAR HANDLE	ON-TRACK		INTERTRACK		TOTAL CHARITY SCHOLARSHIP HANDLE	TOTAL HANDLE
	Live	Simulcast	ITW	ITWS		Live	Simulcast	ITW	ITWS		
<b>Greyhound Racing Permitholders</b>											
Daytona Beach Kennel Club, Inc.	\$3,113,613	\$994,066	\$3,964,070	\$0	\$8,071,749	\$269,539	\$62,372	\$189,438	\$0	\$521,349	\$8,593,098
Derby Lane (St. Petersburg Kennel Club, Inc.)	10,202,906	0	11,595,982	0	21,798,888	1,177,924	0	968,989	0	2,146,913	23,945,801
Ebro Greyhound Park	1,481,014	0	0	0	1,481,014	26,297	0	0	0	26,297	1,507,311
Flagler Dog Track	1,867,054	1,644,348	4,485,667	10,699,628	18,696,697	159,024	81,585	403,867	539,685	1,184,161	19,880,858
H&T Gaming, Inc., d/b/a Mardi Gras Racetrack	1,225,458	1,993,048	1,907,158	4,826,130	9,951,794	155,775	109,064	190,320	228,089	683,248	10,635,042
Jacksonville Kennel Club, Inc.	3,887,059	0	7,794,240	0	11,681,299	681,371	0	1,104,733	0	1,786,104	13,467,403
Jefferson County Kennel Club, Inc. (A)	0	0	0	0	0	0	0	0	0	0	0
License Acquisitions, LLC, d/b/a Palm Beach Greyhound Racing	3,976,349	0	9,420,610	0	13,396,959	476,911	0	1,125,024	0	1,601,935	14,998,894
Mardi Gras Racetrack and Gaming Center	1,358,478	1,231,606	1,860,247	2,776,435	7,226,766	117,997	111,789	196,167	217,639	643,592	7,870,358
Melbourne Greyhound Park, LLC	90,559	0	0	0	90,559	0	0	0	0	0	90,559
Naples-Ft. Myers Greyhound Track	9,092,553	0	7,813,898	0	16,906,451	475,040	0	305,275	0	780,315	17,686,766
Orange Park Kennel Club, Inc.	3,230,465	0	7,176,890	0	10,407,355	519,446	0	954,087	0	1,473,533	11,880,888
Palm Beach Kennel Club	14,982,316	0	28,667,250	0	43,649,566	788,243	0	1,115,785	0	1,904,028	45,553,594
Penn Sanford, LLC, d/b/a Sanford-Orlando Kennel Club	3,324,404	0	3,296,381	0	6,620,785	155,116	0	186,702	0	341,818	6,962,603
Pensacola Greyhound Racing, LLP	1,003,096	0	0	0	1,003,096	0	0	0	0	0	1,003,096
SOKC, LLC, d/b/a Sanford-Orlando Kennel Club	4,668,199	0	4,043,321	0	8,711,520	130,588	0	183,225	0	313,813	9,025,333
Sarasota Kennel Club, Inc.	4,903,467	0	1,546,438	0	6,449,905	403,303	0	74,072	0	477,375	6,927,280
St. Johns Greyhound Park	6,914,327	0	14,146,001	0	21,060,328	601,061	0	1,008,113	0	1,609,174	22,669,502
Tampa Greyhound Track	8,336,836	0	11,128,659	0	19,465,495	754,708	0	811,405	0	1,566,113	21,031,608
West Volusia Racing, Inc.	2,817,617	880,669	3,621,468	0	7,319,754	260,433	59,416	195,097	0	514,946	7,834,700
<b>Total Greyhound Permitholders</b>	<b>\$86,475,770</b>	<b>\$6,743,737</b>	<b>\$122,468,280</b>	<b>\$18,302,193</b>	<b>\$233,989,980</b>	<b>\$7,152,776</b>	<b>\$424,226</b>	<b>\$9,012,299</b>	<b>\$985,413</b>	<b>\$17,574,714</b>	<b>\$251,564,694</b>
<b>Jai Alai Permitholders</b>											
Dania Jai Alai	\$2,370,659	\$0	\$8,121,757	\$0	\$10,492,416	\$16,499	\$0	\$57,884	\$0	\$74,383	\$10,566,799
Dania Summer Jai Alai	982,838	0	3,182,215	0	4,165,053	16,220	0	48,442	0	64,662	4,229,715
Ft. Pierce Jai Alai	261,760	0	0	0	261,760	18,834	0	0	0	18,834	280,594
Hamilton Jai Alai and Poker (A)	0	0	0	0	0	0	0	0	0	0	0
Miami Jai Alai	2,433,831	0	3,055,981	0	5,489,812	153,737	0	158,716	0	312,453	5,802,265
Ocala Poker and Jai Alai	0	0	0	0	0	0	0	0	0	0	0
Orlando Jai Alai	458,481	0	35,087	0	493,568	10	0	0	0	10	493,578
Summer Jai Alai	1,808,493	0	2,429,854	0	4,238,347	114,855	0	118,860	0	233,715	4,472,062
West Flagler Associates, LTD., d/b/a Magic City Jai Alai (A)	0	0	0	0	0	0	0	0	0	0	0
<b>Total Jai Alai Permitholders</b>	<b>\$8,316,062</b>	<b>\$0</b>	<b>\$16,824,894</b>	<b>\$0</b>	<b>\$25,140,956</b>	<b>\$320,155</b>	<b>\$0</b>	<b>\$383,902</b>	<b>\$0</b>	<b>\$704,057</b>	<b>\$25,845,013</b>
<b>Thoroughbred Racing Permitholders</b>											
Calder Race Course, Inc.	\$5,624,441	\$21,165,209	\$7,655,738	\$41,223,065	\$75,668,453	\$405,788	\$1,904,357	\$515,286	\$10,261,240	\$13,086,671	\$88,755,124
Gulfstream Park Thoroughbred After Racing Program, Inc.	2,259	0	0	0	2,259	0	0	0	0	0	2,259
Gulfstream Park Racing Association, Inc.	55,553,580	82,556,011	40,444,261	84,401,229	262,955,081	8,223,506	2,220,017	3,984,420	2,337,819	16,765,762	279,720,843
Tampa Bay Downs, Inc.	16,788,472	16,480,963	22,054,241	58,373,589	113,697,265	2,177,821	462,512	2,182,802	1,335,106	6,158,241	119,855,506
Tropical Park, LLC.	2,892,611	11,606,659	3,518,834	17,300,961	35,319,065	452,205	1,662,390	606,420	2,063,304	4,784,319	40,103,384
<b>Total Thoroughbred Permitholders</b>	<b>\$80,861,363</b>	<b>\$131,808,842</b>	<b>\$73,673,074</b>	<b>\$201,298,844</b>	<b>\$487,642,123</b>	<b>\$11,259,320</b>	<b>\$6,249,276</b>	<b>\$7,288,928</b>	<b>\$15,997,469</b>	<b>\$40,794,993</b>	<b>\$528,437,116</b>
<b>Harness Racing Permitholders</b>											
Isle Casino and Racing at Pompano Park	\$3,248,153	\$11,445,175	\$1,231,813	\$25,924,460	\$41,849,601	\$200,162	\$104,073	\$94,599	\$298,590	\$697,424	\$42,547,025
<b>Quarter Horse Racing Permitholders</b>											
Gretna Racing, LLC	\$85,296	\$0	\$0	\$0	\$85,296	\$0	\$0	\$0	\$0	\$0	\$85,296
Hamilton Downs Horsetrack, LLC	30	0	0	0	30	0	0	0	0	0	30
Ocala Breeders' Sales Company, Inc.	15,939	0	0	0	15,939	0	0	0	0	0	15,939
South Florida Racing Association, LLC (Hialeah Park)	1,457,388	0	181,381	0	1,638,769	0	0	0	0	0	1,638,769
South Marion Real Estate Holdings, LLC	2,853	0	0	0	2,853	0	0	0	0	0	2,853
<b>Total Quarter Horse Permitholders</b>	<b>\$1,561,506</b>	<b>\$0</b>	<b>\$181,381</b>	<b>\$0</b>	<b>\$1,742,887</b>	<b>\$0</b>	<b>\$0</b>	<b>\$0</b>	<b>\$0</b>	<b>\$0</b>	<b>\$1,742,887</b>
<b>TOTAL FOR ALL PERMITHOLDERS</b>	<b>\$180,462,854</b>	<b>\$149,997,754</b>	<b>\$214,379,442</b>	<b>\$245,525,497</b>	<b>\$790,365,547</b>	<b>\$18,932,413</b>	<b>\$6,777,575</b>	<b>\$16,779,728</b>	<b>\$17,281,472</b>	<b>\$59,771,188</b>	<b>\$850,136,735</b>

(A) Permitholder applied for and received license to conduct live performances during 2013/2014, but no live performances were held during 2013/2014.



**TOTAL INTERTRACK WAGERING HANDLE BY GUEST**

Fiscal Year 2013/2014

**HOST PERMITHOLDER**

GUEST PERMITHOLDER	HOST PERMITHOLDER									
	DAYTONA	DERBY LANE	FLAGLER	H&T GAMING	JACKSONVILLE	LICENSE ACQUISITIONS	MARDI GRAS	NAPLES-FT. MYERS	ORANGE PARK	PALM BEACH
<b>Greyhound Permitholders</b>										
Daytona Beach Kennel Club, Inc.	\$0	\$286,147	\$189,692	\$63,151	\$535,707	\$480,552	\$0	\$67,645	\$139,111	\$490,787
Derby Lane (St. Petersburg Kennel Club, Inc.)	323,553	0	486,267	669,774	623,483	1,015,962	305,719	675,602	630,675	3,072,310
Ebro Greyhound Park	0	519,419	0	0	106,468	216,733	0	0	182,292	686,251
Flagler Dog Track	128,732	515,710	0	970,053	336,502	776,147	715,897	1,205,240	294,274	2,108,639
H&T Gaming, Inc., d/b/a Mardi Gras Racetrack	394,775	501,620	4,789,522	0	400,357	516,683	0	527,800	353,614	1,249,806
Jacksonville Kennel Club, Inc.	321,797	699,993	1,589,329	898,330	1,161,902	633,877	594,333	473,530	975,786	1,822,325
Jefferson County Kennel Club, Inc.	0	0	0	0	0	0	0	0	0	0
License Acquisitions, LLC, d/b/a Palm Beach Greyhound Racing	171,374	0	173,611	0	456,793	0	0	8,769	204,456	0
Mardi Gras Racetrack and Gaming Center	0	162,173	0	0	0	0	0	315,754	32,781	460,233
Melbourne Greyhound Park, LLC	97,163	269,827	494,617	268,195	177,993	378,976	177,923	184,266	167,890	997,446
Naples-Ft. Myers Greyhound Track	137,781	480,177	965,959	318,399	182,613	490,142	211,869	0	117,258	1,277,009
Orange Park Kennel Club, Inc.	514,702	1,387,144	2,334,732	1,253,065	0	1,008,035	868,523	729,122	0	2,919,130
Palm Beach Kennel Club	161,088	959,367	101,272	162,411	243,420	0	165,620	636,503	429,430	0
Penn Sanford, LLC, d/b/a Sanford-Orlando Kennel Club	166,804	0	1,603,468	0	411,927	845,096	312,896	215,814	636,872	815,551
Pensacola Greyhound Racing, LLP	282,254	0	151,104	0	1,184,960	210,972	0	148,295	1,143,997	561,866
SOKC, LLC, d/b/a Sanford-Orlando Kennel Club	184,155	1,041,168	398,905	1,191,677	268,616	0	494,456	601,850	0	1,715,589
Sarasota Kennel Club, Inc.	158,982	1,148,217	745,689	375,074	389,505	777,899	274,381	432,523	327,129	1,828,377
St. Johns Greyhound Park	0	0	0	0	0	0	0	0	0	0
Tampa Greyhound Track	345,180	2,412,823	371,178	220,217	621,735	909,822	213,996	701,740	580,650	2,543,656
West Volusia Racing, Inc.	0	273,111	58,990	74,058	0	18,219	121,706	191,322	312,288	891,882
<b>Total Greyhound Permitholders</b>	<b>\$3,388,340</b>	<b>\$10,656,896</b>	<b>\$14,454,335</b>	<b>\$6,464,404</b>	<b>\$7,101,981</b>	<b>\$8,279,115</b>	<b>\$4,457,319</b>	<b>\$7,115,775</b>	<b>\$6,528,503</b>	<b>\$23,440,857</b>
<b>Jai Alai Permitholders</b>										
Dania Jai Alai	\$41,615	\$0	\$242,785	\$351,849	\$29,437	\$3,699	\$239,781	\$126,305	\$23,011	\$294,755
Dania Summer Jai Alai	49,460	0	597,062	0	64,790	151,052	0	0	39,453	30,461
Ft. Pierce Jai Alai	106,532	226,462	126,609	87,426	176,190	363,911	83,557	247,486	154,633	1,236,951
Hamilton Jai Alai and Poker	0	0	84,312	0	145,001	116,925	0	38,225	61,820	116,906
Miami Jai Alai	0	0	0	0	0	0	0	0	0	0
Ocala Poker and Jai Alai	139,101	337,247	84,051	60,089	225,912	209,820	59,163	190,667	181,801	482,208
Orlando Jai Alai	0	0	0	0	0	0	0	0	0	0
Summer Jai Alai	0	0	0	0	0	0	0	0	0	0
West Flagler Associates, LTD., d/b/a Magic City Jai Alai	0	0	0	0	0	0	0	0	0	0
<b>Total Jai Alai Permitholders</b>	<b>\$336,708</b>	<b>\$563,709</b>	<b>\$1,134,819</b>	<b>\$499,364</b>	<b>\$641,330</b>	<b>\$845,407</b>	<b>\$382,501</b>	<b>\$602,683</b>	<b>\$460,718</b>	<b>\$2,161,281</b>
<b>Thoroughbred Permitholders</b>										
Calder Race Course, Inc.	\$0	\$0	\$0	\$0	\$0	\$0	\$0	\$0	\$0	\$0
Gulfstream Park Racing Association, Inc.	0	0	0	0	0	973	0	5,086	2,569	21,582
Tampa Bay Downs, Inc.	0	1,110,828	0	0	197,123	278,978	0	0	212,054	960,953
Tropical Park, Inc.	0	0	0	0	0	0	0	0	0	0
<b>Total Thoroughbred Permitholders</b>	<b>\$0</b>	<b>\$1,110,828</b>	<b>\$0</b>	<b>\$0</b>	<b>\$197,123</b>	<b>\$279,951</b>	<b>\$0</b>	<b>\$5,086</b>	<b>\$214,623</b>	<b>\$982,535</b>
<b>Harness Permitholders</b>										
Isle Casino and Racing at Pompano Park	\$0	\$0	\$198,772	\$187,929	\$307,128	\$583,146	\$210,668	\$0	\$265,791	\$1,848,061
<b>Quarter Horse Permitholders</b>										
Gretna Racing, LLC	\$379,885	\$0	\$340,921	\$0	\$574,570	\$325,848	\$0	\$395,629	\$566,856	\$847,264
Hamilton Downs Horsetrack, LLC	0	0	0	0	0	0	0	0	0	0
Ocala Breeders' Sales Company Inc.	48,575	233,538	0	0	76,841	232,167	0	0	94,486	503,037
South Florida Racing Association, LLC (Hialeah Park)	0	0	0	0	0	0	0	0	0	0
South Marion Real Estate Holdings, LLC	0	0	0	0	0	0	0	0	0	0
<b>Total Quarter Horse Permitholders</b>	<b>\$428,460</b>	<b>\$233,538</b>	<b>\$340,921</b>	<b>\$0</b>	<b>\$651,411</b>	<b>\$558,015</b>	<b>\$0</b>	<b>\$395,629</b>	<b>\$661,342</b>	<b>\$1,350,301</b>
<b>TOTAL FOR ALL PERMITHOLDERS</b>	<b>\$4,153,508</b>	<b>\$12,564,971</b>	<b>\$16,128,847</b>	<b>\$7,151,697</b>	<b>\$8,898,973</b>	<b>\$10,545,634</b>	<b>\$5,050,488</b>	<b>\$8,119,173</b>	<b>\$8,130,977</b>	<b>\$29,783,035</b>

CONTINUED ON NEXT PAGE

Note: Figures above include handle from charity/scholarship performances.

**TOTAL INTERTRACK WAGERING HANDLE BY GUEST**

Fiscal Year 2013/2014	HOST PERMITHOLDER									
	Penn Sanford	SOKC, LLC	SARASOTA	ST. JOHNS	TAMPA GREYHOUND	WEST VOLUSIA RACING	DANIA	DANIA SUMMER	MIAMI	ORLANDO
<b>Greyhound Permitholders</b>										
Daytona Beach Kennel Club, Inc.	\$101,961	\$129,237	\$9,583	\$314,321	\$300,666	\$0	\$96,289	\$81,653	\$32,290	\$0
Derby Lane (St. Petersburg Kennel Club, Inc.)	333,913	269,135	189,128	1,046,399	0	323,769	486,555	152,979	304,784	0
Ebro Greyhound Park	0	0	106,210	367,473	496,176	0	70,684	34,233	0	0
Flagler Dog Track	156,300	180,482	98,338	554,256	513,018	138,726	0	0	0	0
H&T Gaming, Inc., d/b/a Mardi Gras Racetrack	348,343	334,676	163,415	447,069	486,965	256,687	244,580	127,118	0	0
Jacksonville Kennel Club, Inc.	293,079	361,488	103,979	2,027,931	622,533	280,720	307,967	110,008	156,821	0
Jefferson County Kennel Club, Inc.	0	0	0	0	0	0	0	0	0	0
License Acquisitions, LLC, d/b/a Palm Beach Greyhound Racing	211,054	0	857	0	413,219	3,525	5,883	131,376	2,541	0
Mardi Gras Racetrack and Gaming Center	50,672	100,283	103,956	293,649	99,810	157,511	90,063	0	0	0
Melbourne Greyhound Park, LLC	123,777	155,607	45,343	313,227	267,858	94,059	613,668	257,098	427,105	13,166
Naples-Ft. Myers Greyhound Track	111,185	153,828	117,513	330,290	390,692	142,013	0	0	0	0
Orange Park Kennel Club, Inc.	444,527	554,044	151,391	0	1,328,763	465,540	260,822	124,050	155,073	0
Palm Beach Kennel Club	169,304	533,251	116,993	1,214,998	398,193	329,156	540,035	61,642	301,496	0
Penn Sanford, LLC, d/b/a Sanford-Orlando Kennel Club	0	0	50,361	132,108	994,581	174,562	0	0	12	0
Pensacola Greyhound Racing, LLP	136,014	153,568	16,080	1,960,491	0	187,650	91,661	43,366	0	0
SOKC, LLC, d/b/a Sanford-Orlando Kennel Club	0	0	50,793	1,042,819	0	165,117	0	0	0	0
Sarasota Kennel Club, Inc.	175,335	235,905	0	611,846	1,093,962	162,606	0	0	0	0
St. Johns Greyhound Park	0	0	0	0	0	0	0	0	0	0
Tampa Greyhound Track	430,396	560,250	220,102	1,054,980	2,321,288	280,552	405,424	162,392	280,023	0
West Volusia Racing, Inc.	88,422	117,794	76,468	518,898	259,762	0	161,110	29,382	138,007	0
<b>Total Greyhound Permitholders</b>	<b>\$3,174,282</b>	<b>\$3,839,548</b>	<b>\$1,620,510</b>	<b>\$12,230,755</b>	<b>\$9,987,486</b>	<b>\$3,162,193</b>	<b>\$3,374,741</b>	<b>\$1,315,297</b>	<b>\$1,798,152</b>	<b>\$13,166</b>
<b>Jai Alai Permitholders</b>										
Dania Jai Alai	\$0	\$0	\$0	\$109,448	\$0	\$62,374	\$0	\$0	\$275,885	\$12,780
Dania Summer Jai Alai	0	0	0	0	0	11,449	0	0	0	0
Ft. Pierce Jai Alai	0	0	0	290,530	213,439	103,207	296,849	124,728	242,808	0
Hamilton Jai Alai and Poker	0	0	0	0	186,922	0	0	0	0	0
Miami Jai Alai	0	0	0	0	0	0	1,136,702	234,749	0	0
Ocala Poker and Jai Alai	118,163	137,582	0	326,499	319,133	109,189	327,343	139,071	158,868	0
Orlando Jai Alai	0	0	0	0	0	0	1,129,616	433,715	480,169	0
Summer Jai Alai	0	0	0	0	0	0	360,678	407,947	0	0
West Flagler Associates, LTD., d/b/a Magic City Jai Alai	0	0	0	0	0	0	0	0	0	0
<b>Total Jai Alai Permitholders</b>	<b>\$118,163</b>	<b>\$137,582</b>	<b>\$0</b>	<b>\$726,477</b>	<b>\$719,494</b>	<b>\$286,219</b>	<b>\$3,251,188</b>	<b>\$1,340,210</b>	<b>\$1,157,730</b>	<b>\$12,780</b>
<b>Thoroughbred Permitholders</b>										
Calder Race Course, Inc.	\$0	\$0	\$0	\$0	\$0	\$0	\$0	\$0	\$0	\$0
Gulfstream Park Racing Association, Inc.	0	0	0	0	0	0	0	0	0	0
Tampa Bay Downs, Inc.	190,638	249,416	0	419,844	1,018,223	0	301,912	96,021	199,551	9,141
Tropical Park, Inc.	0	0	0	0	0	0	0	0	0	0
<b>Total Thoroughbred Permitholders</b>	<b>\$190,638</b>	<b>\$249,416</b>	<b>\$0</b>	<b>\$419,844</b>	<b>\$1,018,223</b>	<b>\$0</b>	<b>\$301,912</b>	<b>\$96,021</b>	<b>\$199,551</b>	<b>\$9,141</b>
<b>Harness Permitholders</b>										
Isle Casino and Racing at Pompano Park	\$0	\$0	\$0	\$566,635	\$0	\$0	\$955,120	\$370,200	\$0	\$0
<b>Quarter Horse Permitholders</b>										
Gretna Racing, LLC	\$0	\$0	\$0	\$1,079,851	\$0	\$331,257	\$162,182	\$50,503	\$0	\$0
Hamilton Downs Horsetrack, LLC	0	0	0	0	0	0	0	0	0	0
Ocala Breeders' Sales Company Inc.	0	0	0	130,552	214,861	36,896	134,498	58,426	59,264	0
South Florida Racing Association, LLC (Hialeah Park)	0	0	0	0	0	0	0	0	0	0
South Marion Real Estate Holdings, LLC	0	0	0	0	0	0	0	0	0	0
<b>Total Quarter Horse Permitholders</b>	<b>\$0</b>	<b>\$0</b>	<b>\$0</b>	<b>\$1,210,403</b>	<b>\$214,861</b>	<b>\$368,153</b>	<b>\$296,680</b>	<b>\$108,929</b>	<b>\$59,264</b>	<b>\$0</b>
<b>TOTAL FOR ALL PERMITHOLDERS</b>	<b>\$3,483,083</b>	<b>\$4,226,546</b>	<b>\$1,620,510</b>	<b>\$15,154,114</b>	<b>\$11,940,064</b>	<b>\$3,816,565</b>	<b>\$8,179,641</b>	<b>\$3,230,657</b>	<b>\$3,214,697</b>	<b>\$35,087</b>

CONTINUED FROM PREVIOUS PAGE

CONTINUED ON NEXT PAGE

Note: Figures above include handle from charity/scholarship performances.

**TOTAL INTERTRACK WAGERING HANDLE BY GUEST**

Fiscal Year 2013/2014

GUEST PERMITHOLDER	HOST PERMITHOLDER							TOTAL
	SUMMER	CALDER	GULFSTREAM PARK	TAMPA BAY DOWNS	TROPICAL PARK	POMPAÑO PARK	HIALEAH PARK	
<b>Greyhound Permitholders</b>								
Daytona Beach Kennel Club, Inc.	\$102,782	\$3,500,538	\$1,060,769	\$110,541	\$513,971	\$895,366	\$0	\$9,502,759
Derby Lane (St. Petersburg Kennel Club, Inc.)	227,073	1,746,018	3,084,621	10,116,447	636,583	1,697,917	16,391	28,435,057
Ebro Greyhound Park	0	280,905	741,101	1,170,530	106,802	0	0	5,085,277
Flagler Dog Track	0	1,155,327	1,608,941	0	496,171	1,078,180	0	13,030,933
H&T Gaming, Inc., d/b/a Mardi Gras Racetrack	0	1,159,173	277,709	71,472	523,247	1,925,408	0	15,100,039
Jacksonville Kennel Club, Inc.	120,080	925,670	1,715,953	5,077,907	247,863	980,440	0	22,503,641
Jefferson County Kennel Club, Inc.	0	0	0	0	0	0	0	0
License Acquisitions, LLC, d/b/a Palm Beach Greyhound Racing	83,433	717,124	8,223,688	0	641,250	1,010,973	0	12,459,926
Mardi Gras Racetrack and Gaming Center	0	248,297	69,855	68,596	179,283	531,336	0	2,964,252
Melbourne Greyhound Park, LLC	345,330	1,475,195	2,975,408	7,242,717	472,675	847,624	29,961	18,914,114
Naples-Ft. Myers Greyhound Track	0	8,990,777	7,160,244	2,172,784	3,759,412	1,401,176	0	28,911,121
Orange Park Kennel Club, Inc.	137,548	1,077,633	2,182,180	5,754,662	304,858	115,105	0	24,070,649
Palm Beach Kennel Club	150,541	5,060,289	34,128,585	3,286,315	1,224,208	3,454,452	0	53,828,569
Penn Sanford, LLC,d/b/a Sanford-Orlando Kennel Club	0	241,060	979,187	4,662,002	516,278	599,278	0	13,357,857
Pensacola Greyhound Racing, LLP	0	245,670	837,909	134,226	75,908	0	0	7,565,991
SOKC, LLC, d/b/a Sanford-Orlando Kennel Club	0	1,265,978	2,315,461	3,956,309	0	734,152	0	15,427,045
Sarasota Kennel Club, Inc.	0	1,747,598	3,518,339	8,240,567	582,907	983,729	0	23,810,570
St. Johns Greyhound Park	0	0	0	0	0	0	0	0
Tampa Greyhound Track	222,883	1,279,370	2,523,762	7,734,052	475,026	1,609,290	10,300	28,491,087
West Volusia Racing, Inc.	25,587	1,135,213	1,325,473	493,440	1,696,009	810,400	25,734	8,843,275
<b>Total Greyhound Permitholders</b>	<b>\$1,415,257</b>	<b>\$32,251,835</b>	<b>\$74,729,185</b>	<b>\$60,292,567</b>	<b>\$12,452,451</b>	<b>\$18,674,826</b>	<b>\$82,386</b>	<b>\$332,302,162</b>
<b>Jai Alai Permitholders</b>								
Dania Jai Alai	\$113,975	\$279,802	\$78,364	\$0	\$92,717	\$625,546	\$0	\$3,004,128
Dania Summer Jai Alai	152,314	143,541	58,103	0	109,767	491,259	0	1,898,711
Ft. Pierce Jai Alai	187,688	865,772	1,775,679	4,018,742	271,403	0	0	11,200,602
Hamilton Jai Alai and Poker	0	0	0	0	0	0	0	750,111
Miami Jai Alai	0	0	0	0	2,951	0	0	1,374,402
Ocala Poker and Jai Alai	117,905	311,610	1,907,528	162,051	100,790	189,487	0	6,395,278
Orlando Jai Alai	356,102	1,727,974	3,174,742	8,890,365	616,170	2,595,219	0	19,404,072
Summer Jai Alai	0	0	0	0	0	0	0	768,625
West Flagler Associates, LTD., d/b/a Magic City Jai Alai	0	0	0	0	0	0	0	0
<b>Total Jai Alai Permitholders</b>	<b>\$927,984</b>	<b>\$3,328,699</b>	<b>\$6,994,416</b>	<b>\$13,071,158</b>	<b>\$1,193,798</b>	<b>\$3,901,511</b>	<b>\$0</b>	<b>\$44,795,929</b>
<b>Thoroughbred Permitholders</b>								
Calder Race Course, Inc.	\$0	\$0	\$15,159,407	\$2,505,156	\$0	\$699,192	\$0	\$18,363,755
Gulfstream Park Racing Association, Inc.	0	9,674,922	0	5,955,730	4,158,978	1,771,903	17,565	21,609,308
Tampa Bay Downs, Inc.	141,806	3,663,726	8,333,907	0	1,188,228	1,635,829	0	20,208,178
Tropical Park, Inc.	0	0	5,005,162	402,398	0	242,801	0	5,650,361
<b>Total Thoroughbred Permitholders</b>	<b>\$141,806</b>	<b>\$13,338,648</b>	<b>\$28,498,476</b>	<b>\$8,863,284</b>	<b>\$5,347,206</b>	<b>\$4,349,725</b>	<b>\$17,565</b>	<b>\$65,831,602</b>
<b>Harness Permitholders</b>								
Isle Casino and Racing at Pompano Park	\$0	\$8,542,903	\$1,797,825	\$0	\$3,781,117	\$0	\$81,430	\$19,696,725
<b>Quarter Horse Permitholders</b>								
Gretna Racing, LLC	\$0	\$87,966	\$1,494,077	\$61,750	\$105,967	\$0	\$0	\$6,804,526
Hamilton Downs Horsetrack, LLC	0	0	0	0	0	0	0	0
Ocala Breeders' Sales Company Inc.	63,667	1,875,071	10,852,560	1,062,362	607,178	514,503	0	16,798,482
South Florida Racing Association, LLC (Hialeah Park)	0	230,207	6,801,190	594,617	1,802	108,897	0	7,736,713
South Marion Real Estate Holdings, LLC	0	0	0	0	0	0	0	0
<b>Total Quarter Horse Permitholders</b>	<b>\$63,667</b>	<b>\$2,193,244</b>	<b>\$19,147,827</b>	<b>\$1,718,729</b>	<b>\$714,947</b>	<b>\$623,400</b>	<b>\$0</b>	<b>\$31,339,721</b>
<b>TOTAL FOR ALL PERMITHOLDERS</b>	<b>\$2,548,714</b>	<b>\$59,655,329</b>	<b>\$131,167,729</b>	<b>\$83,945,738</b>	<b>\$23,489,519</b>	<b>\$27,549,462</b>	<b>\$181,381</b>	<b>\$493,966,139</b>

CONTINUED FROM PREVIOUS PAGE

Note: Figures above include handle from charity/scholarship performances.

## CHARITY AND SCHOLARSHIP PERFORMANCES

Each permitholder may operate up to five additional days designated as charity or scholarship days during their regular meet. Proceeds from these additional days are paid to approved charities, major state and private institutions of higher learning, community colleges, the Historical Resources Operating Trust Fund, and the Racing Scholarship Trust Fund (Board of Governors' Operations and Maintenance Trust Fund). A list of proposed recipients is submitted annually by the permitholder to the division. Typically, the amount contributed to charitable organizations is determined by calculating the amount of taxes due to the state had it been a regular performance. A minimum of \$1,552,949 was paid to charitable organizations during Fiscal Year 2013/2014, bringing the total proceeds disbursed since 1985 to \$76,515,814.

### RACING SCHOLARSHIP TRUST FUND

The Board of Governors, within the Department of Education, oversees the Board of Governors' Operations and Maintenance Trust Fund and ensures that the referenced contributions are used to provide scholarships to deserving students attending Florida's colleges and universities. A total of \$16,885,110 has been paid to this fund since the program began in 1949. The amount contributed to the fund this fiscal year is detailed below.

<b>Racing Scholarship Trust Fund</b>	
Washington County Kennel Club, Inc.	\$736
<b>Total For 2013/2014 Fiscal Year</b>	<b>\$736</b>

### ABANDONED WINNING TICKETS

Abandoned pari-mutuel tickets are winning tickets that remain uncashed for a period of one year. The value of greyhound and jai alai abandoned tickets for live on-track races or games escheat to the state. These funds are deposited into the Department of Education's State School Trust Fund for the support and maintenance of Florida's public schools. Since 1957, the total paid into this fund is \$94,783,256. The amount collected from abandoned winning tickets for the State School Trust Fund for this fiscal year is detailed below.

<b>Abandoned Winning Tickets</b>	
Greyhound Permitholders	\$821,893
Jai Alai Permitholders	63,782
<b>Total For 2013/2014 Fiscal Year</b>	<b>\$885,676</b>

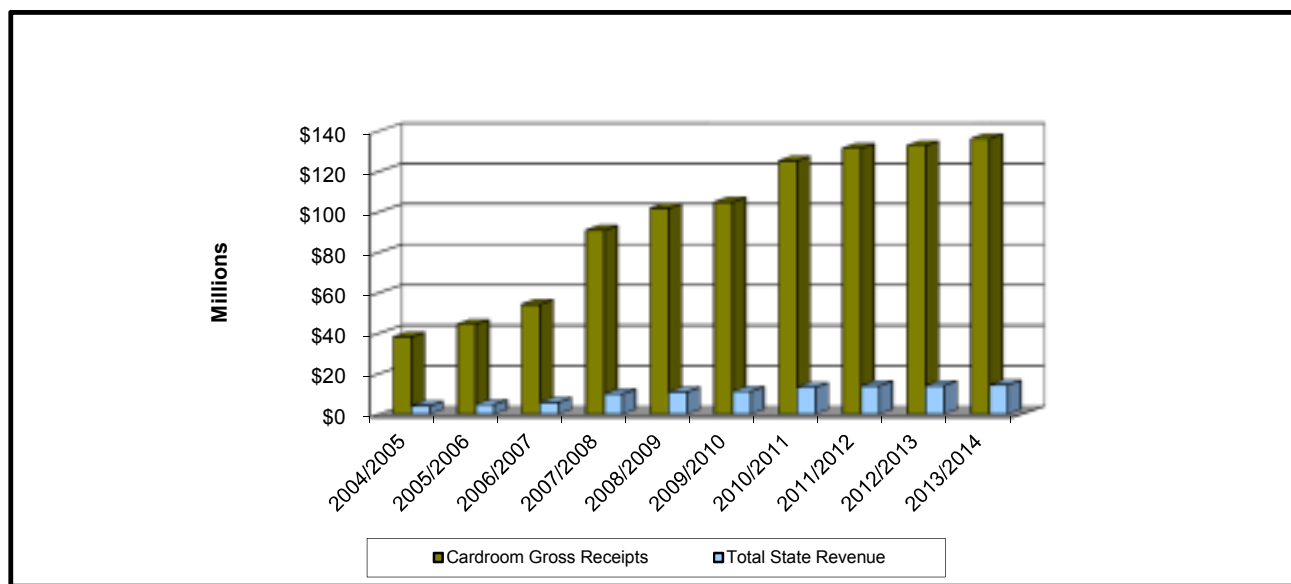
In harness and quarter horse racing, abandoned winning tickets are paid to the respective breeders' associations. Abandoned winning tickets from thoroughbred horse racing are retained by the permitholder.

## CARDROOM COMPARATIVE DATA

During Fiscal Year 2013/2014, there were 26 permissors that obtained a cardroom license. Two did not operate, the other 24 operated at 24 pari-mutuel facilities located throughout the state. The number of cardroom tables decreased from 810 in Fiscal Year 2012/2013, to 788 in Fiscal Year 2013/2014. Cardroom gross receipts increased from \$132,690,415 to \$136,163,616, and the gross receipts tax increased from \$13,269,045 to \$13,615,464 this fiscal year. Table fees decreased from \$810,000 to \$788,000 this fiscal year. The overall result was an increase in total state revenue from \$14,079,045 to \$14,403,465 this fiscal year.

Cardroom tax revenue is distributed 50 percent between the Pari-Mutuel Wagering Trust Fund and the General Revenue Fund. In accordance with Section 849.086(13)(h), Florida Statutes, one quarter of the moneys deposited into the Pari-Mutuel Wagering Trust Fund must be distributed to counties and municipalities that approved the cardroom. In October 2014, the division distributed approximately \$1,701,933 to the counties/municipalities from cardroom gross receipts.

### CARDROOM GROSS RECEIPTS AND TOTAL STATE REVENUE FISCAL YEARS 2004/2005 THROUGH 2013/2014



### CARDROOM GROSS RECEIPTS AND STATE REVENUE SUMMARY

Fiscal Year	Total Cardroom Gross Receipts	Gross Receipts Tax	Table Fees Collected <sup>(A)</sup>	Total State Revenue (Gross Receipts Tax plus Table Fees)	Total State Revenue as a Percent of Gross Receipts
2004/2005	\$38,089,764	\$3,808,977	\$238,000	\$4,046,977	10.62%
2005/2006	\$44,433,359	\$4,443,337	\$264,000	\$4,707,337	10.59%
2006/2007	\$54,208,544	\$5,420,855	\$325,500	\$5,746,355	10.60%
2007/2008	\$90,863,855	\$9,086,385	\$875,000	\$9,961,385	10.96%
2008/2009	\$101,700,243	\$10,170,024	\$698,000	\$10,868,024	10.69%
2009/2010	\$104,799,448	\$10,479,945	\$749,000	\$11,228,945	10.71%
2010/2011	\$125,141,080	\$12,514,108	\$718,000	\$13,232,108	10.57%
2011/2012	\$131,447,663	\$13,144,767	\$834,000	\$13,978,767	10.63%
2012/2013	\$132,690,415	\$13,269,045	\$810,000	\$14,079,045	10.61%
2013/2014	\$136,163,616	\$13,615,464 <sup>(B)</sup>	\$788,000	\$14,403,464	10.58%

(A) Amount agrees with the number of approved cardroom tables per annual cardroom licenses, and reflects the number of tables in operation each fiscal year.

(B) Additional payment of \$897.50 for October 2013, received in August 2014, due to revised report and is not included in 2013/2014 Gross Receipts Tax.

Fiscal Year 2013/2014

	County / Municipality	Gross Receipts	Tournament Gross Receipts	Total Gross Receipts	Gross Receipts Tax <sup>(A)</sup>	Table Fees Collected	Total Taxes and Fees
<b>Greyhound Racing Permitholders</b>							
Daytona Beach Kennel Club, Inc./West Volusia Racing, Inc.	Volusia	\$10,158,748	\$700,218	\$10,858,966	\$1,085,896	\$55,000	\$1,140,896
Derby Lane (St. Petersburg Kennel Club, Inc.)	Pinellas	8,077,602	697,466	8,775,068	877,507	55,000	932,507
Ebro Greyhound Park	Washington	3,054,868	155,483	3,210,351	321,035	25,000	346,035
Flagler Dog Track	Dade	6,539,552	28,455	6,568,007	655,903 <sup>(B)</sup>	19,000	674,903
Jacksonville Kennel Club, Inc.	Duval	14,105,943	1,065,260	15,171,203	1,517,120	72,000	1,589,120
Jefferson County Kennel Club, Inc. <sup>(C)</sup>	Jefferson	0	0	0	0	1,000	1,000
Mardi Gras Racetrack and Gaming Center/H & T Gaming, Inc.	Hallandale	5,307,541	79,520	5,387,061	538,706	30,000	568,706
Melbourne Greyhound Park, LLC	Brevard	4,081,667	190,145	4,271,812	427,181	34,000	461,181
Naples-Ft. Myers Greyhound Track	Lee	6,446,238	533,330	6,979,568	697,957	28,000	725,957
Orange Park Kennel Club, Inc.	Town of Orange Park	7,247,828	16,650	7,264,478	726,448	39,000	765,448
Palm Beach Kennel Club/License Acquisitions, LLC	Palm Beach	11,590,150	980,417	12,570,567	1,257,057	76,000	1,333,057
Pensacola Greyhound Racing, LLP	Escambia	3,207,292	390,245	3,597,537	359,754	20,000	379,754
Sarasota Kennel Club, Inc.	Sarasota	4,903,229	447,928	5,351,157	535,116	35,000	570,116
St. Johns Greyhound Park <sup>(C)</sup>	St. Johns	0	0	0	0	1,000	1,000
Tampa Greyhound Track	Hillsborough	1,944,096	116,388	2,060,484	206,048	19,000	225,048
<b>Total Greyhound Permitholders</b>		<b>\$86,664,754</b>	<b>\$5,401,505</b>	<b>\$92,066,259</b>	<b>\$9,205,728</b>	<b>\$509,000</b>	<b>\$9,714,728</b>
<b>Jai Alai Permitholders</b>							
Dania Jai Alai/Summersport Enterprises, LLC	Hallandale	\$156,586	\$129,394	\$285,980	\$28,598	\$12,000	\$40,598
Ft. Pierce Jai Alai	St. Lucie	2,821,382	135,337	2,956,719	295,672	25,000	320,672
Hamilton Jai Alai and Poker	Hamilton	464,410	0	464,410	46,441	3,000	49,441
Miami/SummerJai Alai	Dade	3,031,560	125,068	3,156,628	315,663	28,000	343,663
Ocala Poker and Jai Alai	Marion	3,604,989	81,935	3,686,924	368,692	21,000	389,692
<b>Total Jai Alai Permitholders</b>		<b>\$10,078,927</b>	<b>\$471,734</b>	<b>\$10,550,661</b>	<b>\$1,055,066</b>	<b>\$89,000</b>	<b>\$1,144,066</b>
<b>Thoroughbred Racing Permitholders</b>							
Calder Race Course, Inc./Tropical Park, Inc.	Dade	\$2,385,366	\$98,249	2,483,615	\$248,362	\$14,000	\$262,362
Gulfstream Park Racing Association, Inc.	Broward	5,205,992	134,917	5,340,909	534,091	21,000	555,091
Tampa Bay Downs, Inc.	Hillsborough	3,826,643	709,926	\$4,536,569	453,657	23,000	476,657
<b>Total Thoroughbred Permitholders</b>		<b>\$11,418,001</b>	<b>\$943,092</b>	<b>\$12,361,093</b>	<b>\$1,236,110</b>	<b>\$58,000</b>	<b>\$1,294,110</b>
<b>Harness Racing Permitholders</b>							
Isle Casino and Racing at Pompano Park	Broward	\$10,835,239	\$1,725,138	\$12,560,377	\$1,256,038	\$46,000	\$1,302,038
<b>Quarter Horse Racing Permitholders</b>							
Gretna Racing, LLC	Gadsden	\$1,573,391	\$140,591	\$1,713,982	\$171,398	\$18,000	\$189,398
South Florida Racing Association, LLC (Hialeah Park)	Dade	6,778,385	132,859	\$6,911,244	691,124	22,000	713,124
<b>Total Quarter Horse Permitholders</b>		<b>\$8,351,776</b>	<b>\$273,450</b>	<b>\$8,625,226</b>	<b>\$862,522</b>	<b>\$40,000</b>	<b>\$902,522</b>
<b>TOTAL FOR ALL PERMITHOLDERS</b>		<b>\$127,348,697</b>	<b>\$8,814,919</b>	<b>\$136,163,616</b>	<b>\$13,615,464</b>	<b>\$742,000</b>	<b>\$14,357,464</b>

(A) 1/8th of total gross receipts tax is distributed to counties or municipalities by October 1, of the following year.

(B) Additional payment of \$897.50 for October 2013, received in August 2014, due to revised report and is not included in this figure.

(C) Permitholder paid table fees and received cardroom license for 2013/2014, but did not conduct cardroom operations during 2013/2014.

## SLOT COMPARATIVE DATA

During Fiscal Year 2013/2014, the total amount wagered by patrons was \$7,953,652,040. Average daily revenue per slot machine was \$176. Total net slot revenue was \$497,211,625. As a result the total taxes paid to the state was \$174,024,068, an increase of 14 percent in total paid slot taxes from the previous fiscal year. A total of \$15,750,000 was collected in annual fees, including the Compulsive /Addictive Gambling Fee; for details regarding this, see the Summary of State Revenue From Pari-Mutuel, Cardroom, Slot Activity, and Indian Gaming Compact (page 36) of this report. During Fiscal Year 2013/2014, two facilities began slot operations. Hialeah Park began slot operations on August 14, 2013, followed by Dania Jai Alai on February 20, 2014.

HISTORICAL SLOT FACILITY ACTIVITY		
Fiscal Year	Total Amount Wagered	Total State Revenue
2006/2007	\$1,114,108,466	\$49,620,582
2007/2008	\$3,023,981,126	\$120,560,317
2008/2009	\$2,701,341,778	\$103,895,351
2009/2010	\$3,840,468,455	\$138,125,105
2010/2011	\$5,054,297,731	\$125,063,886
2011/2012	\$6,045,432,393	\$143,962,346
2012/2013	\$6,690,513,855	\$152,532,223
2013/2014	\$7,953,652,039	\$174,024,068

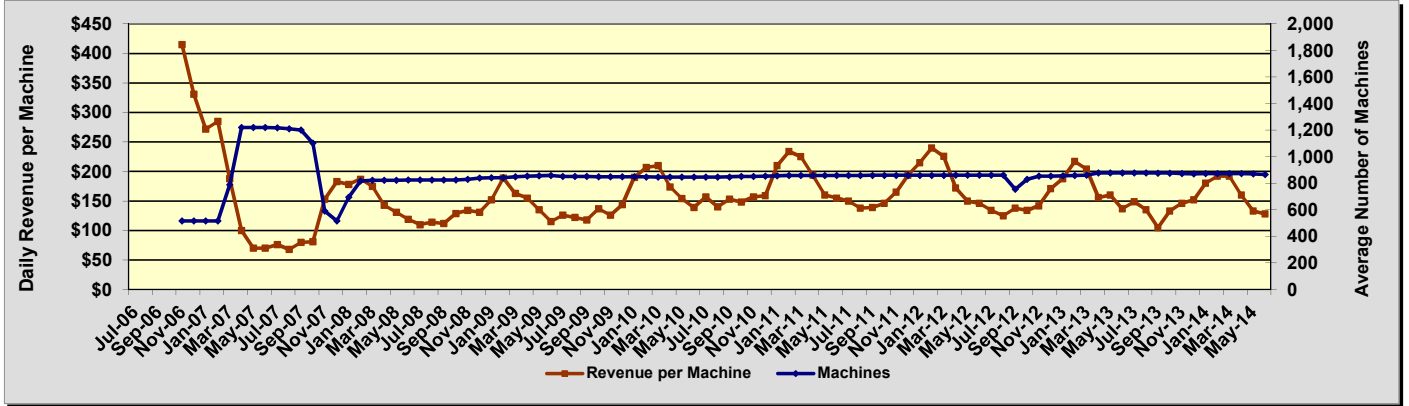
FISCAL YEAR 2013/2014									
	Gulfstream Operations Began 11/15/2006	Mardi Gras Operations Began 12/28/2006	Pompano Park Operations Began 4/14/2007	West Flagler Operations Began 10/15/2009	Calder Operations Began 1/22/2010	Miami Jai Alai Operations Began 1/23/2012	Hialeah Park Operations Began 8/14/2013	Dania Jai Alai Operations Began 2/20/2014	TOTAL
Average Number of Machines	874	998	1,447	801	1,163	1,042	859	543	7,727
Number of Operating Days	365	365	365	365	365	365	321	131	365
Average Daily Revenue per Machine	\$150	\$139	\$252	\$263	\$174	\$153	\$187	\$65	\$176
Amount Wagered	\$774,148,543	\$758,551,976	\$2,180,181,389	\$1,289,610,403	\$995,481,528	\$972,326,430	\$887,321,105	\$96,030,666	\$7,953,652,040
Amount Won By Patrons	\$717,030,959	\$696,114,108	\$2,024,882,335	\$1,210,409,617	\$904,971,587	\$904,791,238	\$830,405,655	\$89,120,424	\$7,377,725,923
Promotional Credits	\$9,285,851	\$11,827,474	\$22,138,698	\$2,401,335	\$16,513,759	\$9,457,412	\$5,337,219	\$2,277,910	\$79,239,658
30-Day Unclaimed Tickets	\$73,045	\$38,379	\$169,095	\$43,907	\$39,679	\$108,316	\$32,582	\$8,389	\$513,392
Net Slot Machine Revenue	\$47,904,778	\$50,648,773	\$133,329,452	\$76,846,343	\$74,044,650	\$58,186,095	\$51,610,813	\$4,640,721	\$497,211,625
State Tax Revenue <sup>(1)</sup>	\$16,766,672	\$17,727,071	\$46,665,308	\$26,896,220	\$25,915,627	\$20,365,133	\$18,063,785	\$1,624,252	\$174,024,068
Permitholder Revenue	\$31,138,106	\$32,921,702	\$86,664,144	\$49,950,123	\$48,129,023	\$37,820,962	\$33,547,028	\$3,016,469	\$323,187,557
Total State Revenue as a Percent of Amount Wagered	2.17%	2.34%	2.14%	2.09%	2.60%	2.09%	2.04%	1.69%	2.19%

Note: Changes to figures for Fiscal Year 2011/2012 and 2012/2013 are due to refunds to Miami Jai Alai for overpayment of slot taxes.

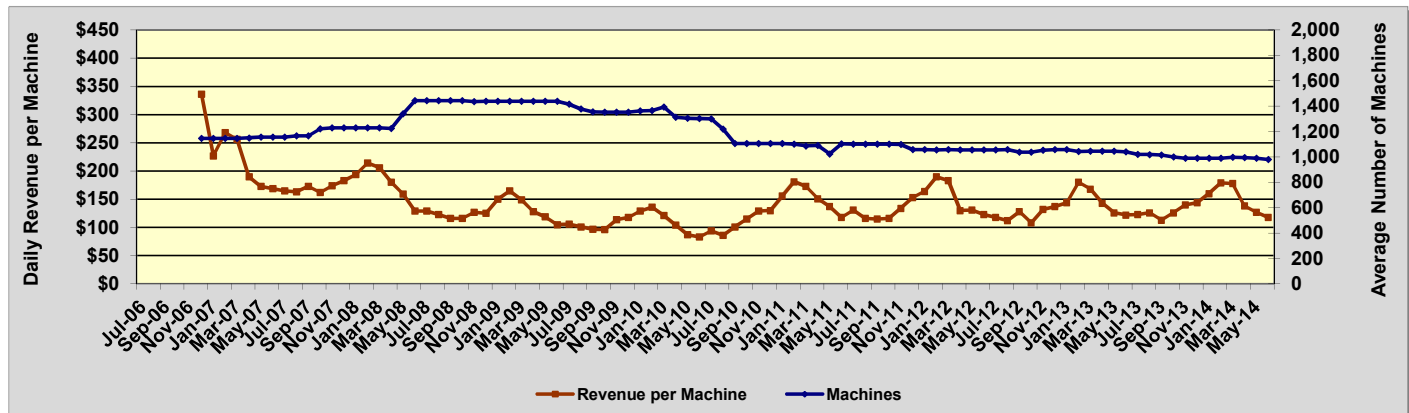
<sup>(1)</sup> Taxes paid on net slot machine revenue were accounted for by the division, then immediately transferred to the Department of Education's Educational Enhancement Trust Fund.

# Daily Revenue per Machine Compared to Average Number of Machines For Fiscal Years 2006/2007 - 2013/2014

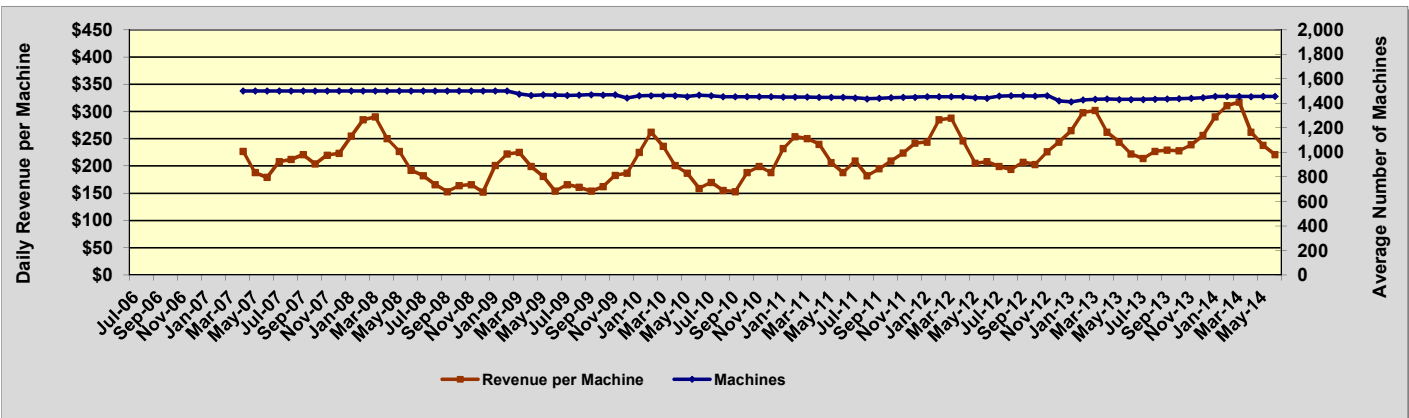
## GULFSTREAM PARK RACING AND CASINO



## MARDI GRAS RACETRACK AND GAMING CENTER



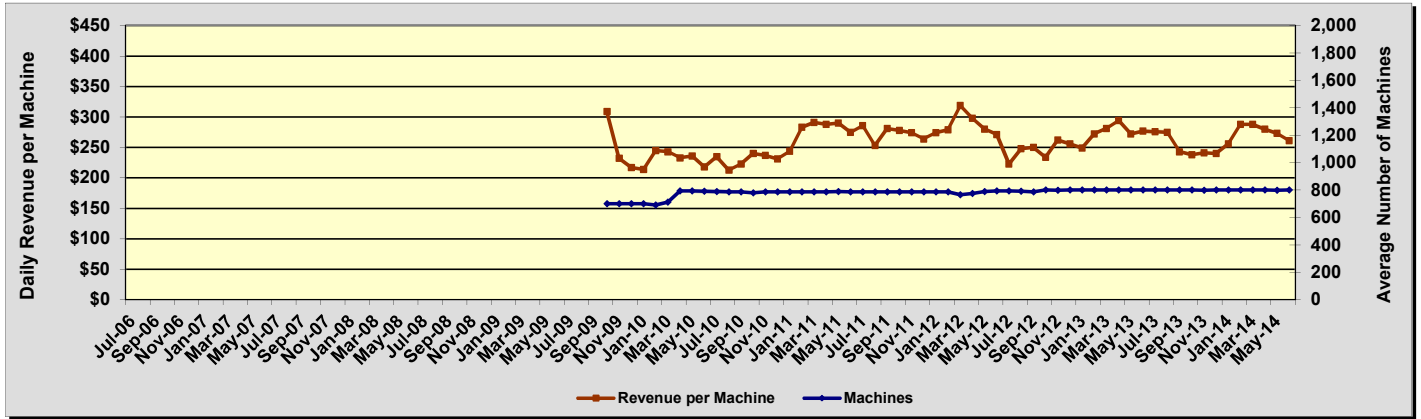
## ISLE CASINO AND RACING AT POMPANO PARK



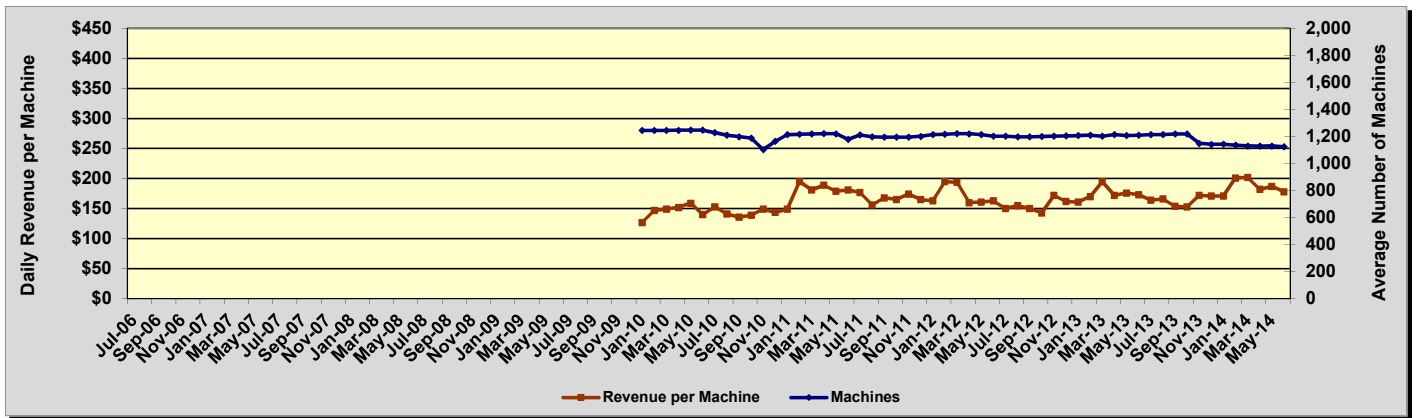


# Daily Revenue per Machine Compared to Average Number of Machines For Fiscal Years 2006/2007 - 2013/2014

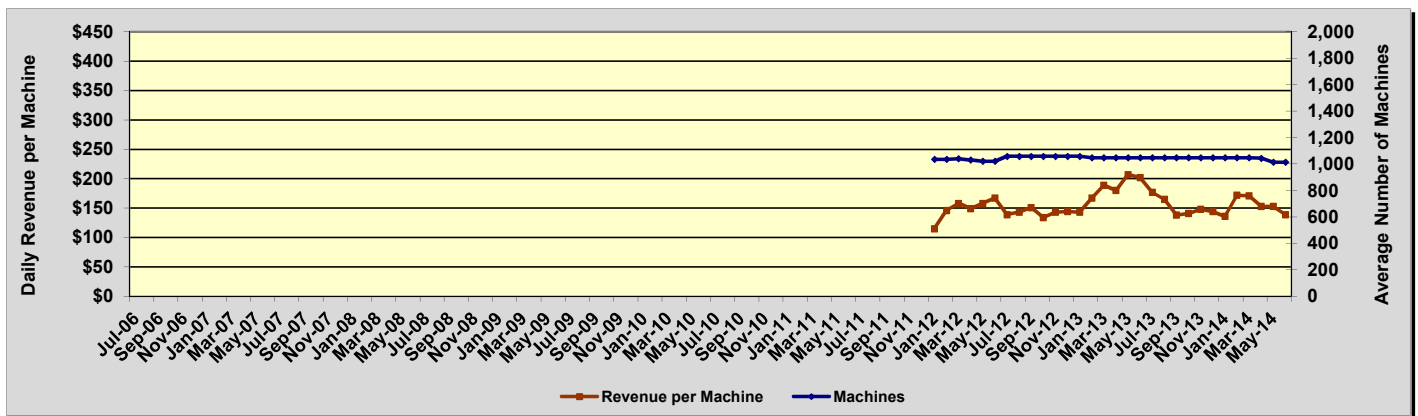
## FLAGLER DOG TRACK AND MAGIC CITY CASINO



## CALDER CASINO AND RACE COURSE

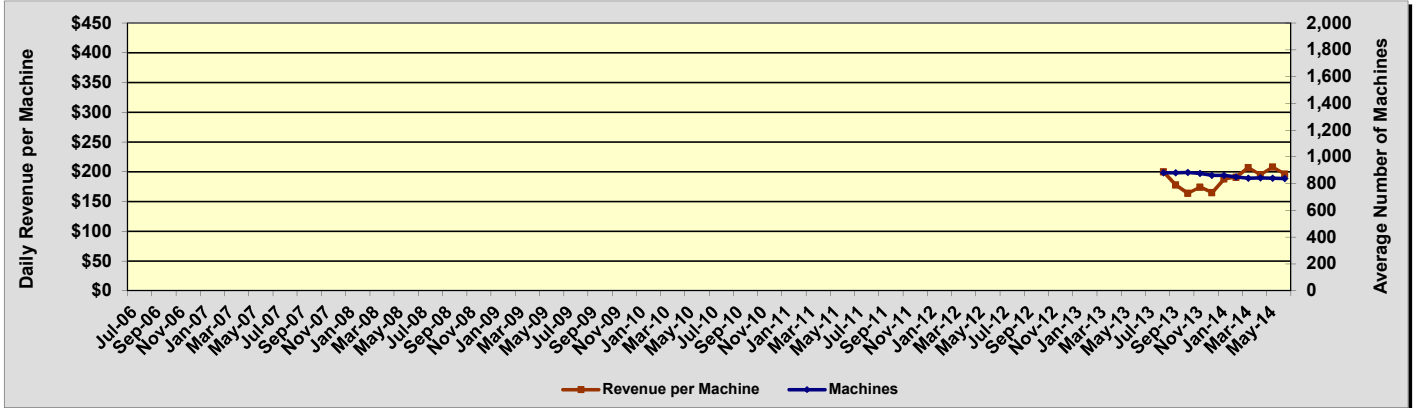


## MIAMI JAI ALAI

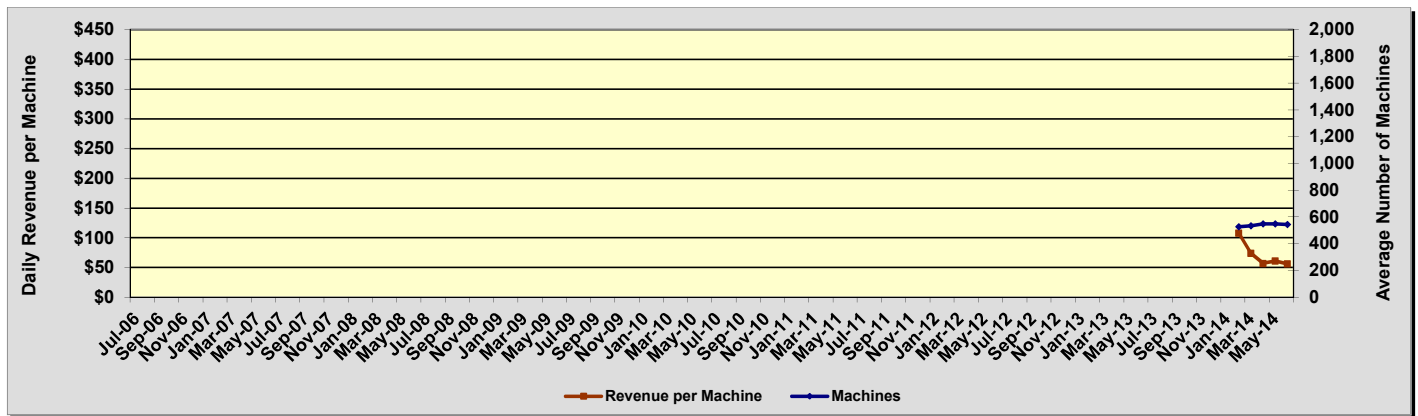


# Daily Revenue per Machine Compared to Average Number of Machines For Fiscal Years 2006/2007 - 2013/2014

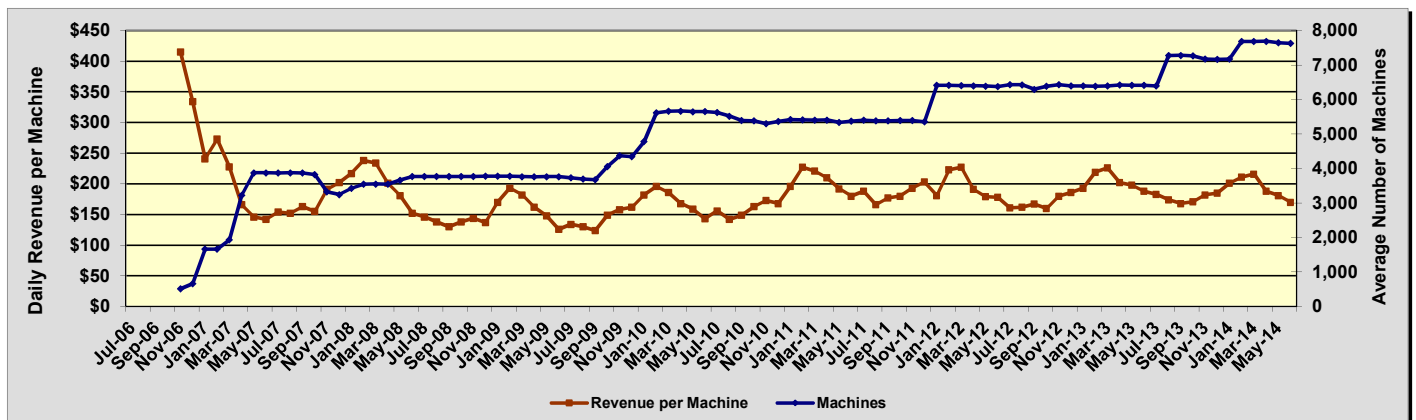
## HIALEAH PARK



## DANIA JAI ALAI

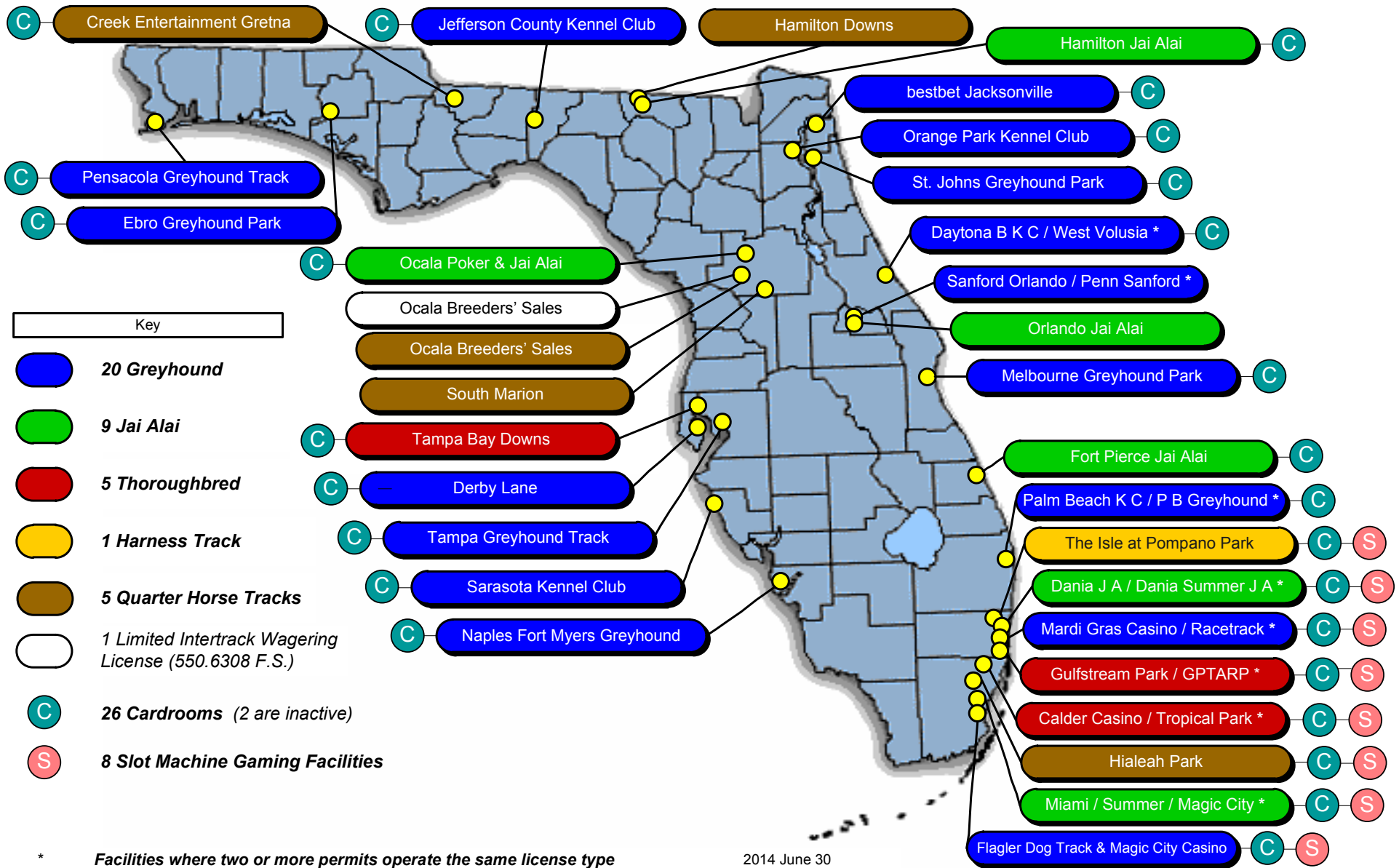


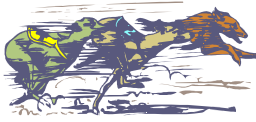
## ALL FACILITIES COMBINED



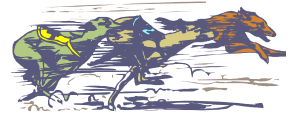
DATA BY PERMITHOLDER/FACILITY

# Pari-Mutuel Permitholders with 2013-2014 Operating Licenses





# GREYHOUND PERMITHOLDERS



Florida remains the leader in greyhound racing in the United States with 20 permitholders operating at 13 tracks throughout the state. A total of 3,534 performances, including charity and scholarship performances, were conducted during this past fiscal year, a decrease of approximately one percent from the previous fiscal year.

During Fiscal Year 2013/2014, handle wagered on live greyhound performances decreased by two percent. Intertrack handle wagered on broadcasts of live Florida greyhound performances decreased by four percent. Simulcast handle wagered on broadcasts of performances from outside the state decreased by five percent. Intertrack simulcast handle wagered on broadcast of performances from outside the state decreased by two percent. Overall, there was a decrease in total handle by three percent for the Florida greyhound industry.

Total paid attendance decreased by 13 percent from the prior year. The division reports only paid attendance; and does not include free admissions or complimentary passes in its data. Total greyhound revenue to the state increased by four percent during Fiscal Year 2013/2014. The greyhound industry accounted for approximately 28.9 percent of Florida's total revenue and 29.6 percent of total handle from pari-mutuel performances.

Greyhound permitholders reported paying a total of \$25,676,248 in purses during Fiscal Year 2013/2014. For more detail on purses paid, please refer to the following information by permitholder. The division was able to confirm reported purse amounts from the weekly purse reports submitted in accordance with Section 61D-8.006, Florida Administrative Code.

All of Florida's greyhound permitholders actively sponsor greyhound adoption programs. Many of the state's greyhound tracks provide for on-site adoption booths, animal welfare, funding, advertising, special events and public information. Section 550.1647, Florida Statutes, provides a greyhound permitholder with credits in an amount equal to the uncashed pari-mutuel tickets remitted in the prior state fiscal year to the state, which is applied against any taxes imposed the next fiscal year. Additionally, Section 550.1647, Florida Statutes, requires each permitholder to pay an amount not less than 10 percent of the credit provided by this section to any bona fide organization that promotes or encourages the adoption of greyhounds. During Fiscal Year 2013/2014, total contributions provided to greyhound adoption units amounted to \$143,265 which exceeded the minimum statutory requirement.

Total Performances	3,534	Total Paid Attendance	285,540
Total Racing Days	2,359	Total Admission Tax	\$12,131

<b>Daytona Beach Kennel Club, Inc.</b>			
Volusia County			
<b>Website</b>	<a href="http://www.daytonagreyhound.com">www.daytonagreyhound.com</a>	<b>Telephone</b>	386.252.6484
<b>Mailing/Street Address</b>	960 South Williamson Boulevard, Daytona Beach, Florida 32114-7247	<b>Fax</b>	386.252.4808
<b>Meet Period</b>	07/01/2013 to 09/30/2013 and 04/01/2014 to 06/30/2014		
<b>Racing Results</b>			
Performances	246	Purses Paid	\$834,742
Racing Days	157		
Paid Attendance	0		
Total Admission Tax	\$0		
<b>Derby Lane</b>			
St. Petersburg Kennel Club, Inc. Pinellas County			
<b>Website</b>	<a href="http://www.derbylane.com">www.derbylane.com</a>	<b>Telephone</b>	727.812.3236
<b>Mailing Address</b>	Post Office Box 22099, St. Petersburg, Florida 33742-2099	<b>Fax</b>	727.812.3305
<b>Street Address</b>	10490 Gandy Boulevard, St. Petersburg, Florida 33702-2395		
<b>Meet Period</b>	01/01/2014 to 06/30/2014		
<b>Racing Results</b>			
Performances	206	Purses Paid	\$2,224,637
Racing Days	155		
Paid Attendance	0		
Total Admission Tax	\$0		

**Ebro Greyhound Park**

Washington County Kennel Club, Inc.  
Washington County

<b>Website</b>	<a href="http://www.qoebro.com">www.qoebro.com</a>	<b>Telephone</b>	850.234.3943
<b>Mailing/Street Address</b>	6558 Dog Track Road, Ebro, Florida 32437-1142	<b>Fax</b>	850.535.4442
<b>Meet Period</b>	07/01/2013 to 09/21/2013 and 05/16/2014 to 06/30/2014		
<b>Racing Results</b>			
Performances	173	Purses Paid	\$464,658
Racing Days	87		
Paid Attendance	7,496		
Total Admission Tax	\$0		

**Flagler Dog Track**

West Flagler Associates, Ltd.  
Dade County

<b>Website</b>	<a href="http://www.magiccitycasino.com">www.magiccitycasino.com</a>	<b>Telephone</b>	305.649.3000
<b>Mailing Address</b>	Post Office Box 350940, Miami, Florida 33135-0940	<b>Fax</b>	305.631.4525
<b>Street Address</b>	401 N.W. 38th Court, Miami, Florida 33126-5638		
<b>Meet Period</b>	07/02/2013 to 10/27/2013 and 05/31/2014 to 06/29/2014		
<b>Racing Results</b>			
Performances	168	Purses Paid	\$3,434,579
Racing Days	106		
Paid Attendance	0		
Total Admission Tax	\$0		

**H & T Gaming, Inc.**

Dade County

**See Mardi Gras Racetrack and Gaming Center's contact information for detail.**

<b>Meet Period</b>	02/16/2014 to 04/28/2014 at Mardis Gras		
<b>Racing Results</b>			
Performances	104	Purses Paid	\$1,055,151
Racing Days	52		
Paid Attendance	0		
Total Admission Tax	\$0		

**Jacksonville Kennel Club, Inc.**

Jacksonville Greyhound Racing, Inc.  
Duval County

<b>Website</b>	<a href="http://www.bestbetjax.com">www.bestbetjax.com</a>	<b>Telephone</b>	904.646.0001
<b>Mailing Address</b>	Post Office Box 959, Orange Park, Florida 32067-0959	<b>Fax</b>	904.646.0420
<b>Street Address</b>	201 Monument Road, Jacksonville, Florida 32225-8106		
<b>Meet Period</b>	07/01/2013 to 09/01/2013 and 05/26/2014 to 06/30/2014 at Orange Park		
<b>Racing Results</b>			
Performances	113	Purses Paid	\$1,042,101
Racing Days	85		
Paid Attendance	0		
Total Admission Tax	\$0		

**Jefferson County Kennel Club, Inc.**

Jefferson County

<b>Website</b>	<a href="http://www.jckcgreyhounds.com">www.jckcgreyhounds.com</a>	<b>Telephone</b>	850.997.2561
<b>Mailing Address</b>	Post Office Box 400, Monticello, Florida 32345-0400	<b>Fax</b>	850.997.3871
<b>Street Address</b>	3079 North Jefferson Street, Monticello, Florida 32344-5685		
<b>Meet Period</b>	03/14/2014 to 06/30/2014 (Received license to conduct live performances but none were held.)		
<b>Racing Results</b>			
Performances	0	Purses Paid	\$0
Racing Days	0		
Paid Attendance	0		
Total Admission Tax	\$0		

**License Acquisitions, LLC (Palm Beach Greyhound Racing)**

Palm Beach County

See Palm Beach Kennel Club's contact information for detail.

**Meet Period** 07/01/2013 to 09/30/2013 and 11/29/2013 to 11/30/2013 at Palm Beach Kennel Club

**Racing Results**

Performances	121	Purses Paid	\$1,022,898
Racing Days	93		
Paid Attendance	12,077		
Total Admission Tax	\$0		

**Mardi Gras Racetrack and Gaming Center**

Hartman and Tyner, Inc.  
Broward County

**Website** [www.mardigrascasinofl.com](http://www.mardigrascasinofl.com) **Telephone** 954-924-3200  
**Mailing/Street Address** 831 North Federal Highway, Hallandale Beach, Florida 33009-2410 **Fax** 954.924.3143

**Meet Period** 12/01/2013 to 02/15/2014

**Racing Results**

Performances	110	Purses Paid	\$1,370,999
Racing Days	55		
Paid Attendance	0		
Total Admission Tax	\$0		

**Melbourne Greyhound Park, LLC**

Brevard County

**Website** [www.mgpark.com](http://www.mgpark.com) **Telephone** 321.259.9800  
**Mailing/Street Address** 1100 North Wickham Road, Melbourne, Florida 32935-8941 **Fax** 321.259.3437

**Meet Period** 03/24/2014 to 06/21/2014

**Racing Results**

Performances	103	Purses Paid	\$337,709
Racing Days	78		
Paid Attendance	0		
Total Admission Tax	\$0		

**Naples-Ft. Myers Greyhound Track**

Southwest Florida Enterprises, Inc.  
Lee County

**Website** [www.naplesfortmyersdogs.com](http://www.naplesfortmyersdogs.com) **Telephone** 239.992.2411  
**Mailing Address** Post Office Box 2567, Bonita Springs, Florida 34133-2567 **Fax** 239.947.9244  
**Street Address** 10601 Bonita Beach Road, S.W., Bonita Springs, Florida 34135-5620

**Meet Period** 11/01/2013 to 05/26/2014

**Racing Results**

Performances	396	Purses Paid	\$1,673,172
Racing Days	192		
Paid Attendance	155,335		
Total Admission Tax	\$10,324		

**Orange Park Kennel Club, Inc.**

Jacksonville Greyhound Racing, Inc.  
Clay County

**Website** [www.bestbetjax.com](http://www.bestbetjax.com) **Telephone** 904.646.0001  
**Mailing Address** Post Office Box 959, Orange Park, Florida 32067-0959 **Fax** 904.646.0420  
**Street Address** 455 Park Avenue, Orange Park, Florida 32073-3101

**Meet Period** 09/02/2013 to 12/08/2013

**Racing Results**

Performances	112	Purses Paid	\$985,449
Racing Days	83		
Paid Attendance	0		
Total Admission Tax	\$0		

**Palm Beach Kennel Club**

Investment Corporation of Palm Beach  
Palm Beach County

**Website** [www.pbkennelclub.com](http://www.pbkennelclub.com) **Telephone** 561.683.2222  
**Mailing/Street Address** 1111 North Congress Avenue, West Palm Beach, Florida 33409-6317 **Fax** 561.471.9114

**Meet Period** 10/01/2013 to 06/30/2014

**Racing Results**

Performances	346	Purses Paid	\$3,271,228
Racing Days	269		
Paid Attendance	39,665		
Total Admission Tax	\$1,048		

**Penn Sanford, LLC, d/b/a Sanford-Orlando Kennel Club**

Seminole County

See SOKC, LLC's contact information for detail.**Meet Period** 07/03/2013 to 12/30/2013**Racing Results**

Performances	133	Purses Paid	\$738,624
Racing Days	105		
Paid Attendance	0		
Total Admission Tax	0		

**Pensacola Greyhound Racing, LLP**

Escambia County

**Website**[www.pensacolagreyhoundtrack.com](http://www.pensacolagreyhoundtrack.com)**Mailing Address**

Post Office Box 12824, Pensacola, Florida 32591-2824

**Telephone**

850.455.8595

**Street Address**

951 Dog Track Road, Pensacola, Florida 32506-8236

**Fax**

850.453.8883

**Meet Period** 07/03/2013 to 06/29/2014**Racing Results**

Performances	154	Purses Paid	\$798,727
Racing Days	125		
Paid Attendance	0		
Total Admission Tax	\$0		

**SOKC, LLC, d/b/a Sanford-Orlando Kennel Club**

Seminole County

**Website**[www.sanfordorlandokc.com](http://www.sanfordorlandokc.com)**Mailing/Street Address**

301 Dog Track Road, Longwood, Florida 32750-6558

**Telephone**

407.831.1600

**Meet Period**

01/01/2014 to 06/30/2014

**Fax**

407.831.3997

**Racing Results**

Performances	181	Purses Paid	\$873,636
Racing Days	130		
Paid Attendance	0		
Total Admission Tax	\$0		

**Sarasota Kennel Club, Inc.**

Sarasota County

**Website**[www.sarasotakennelclub.com](http://www.sarasotakennelclub.com)**Mailing/Street Address**

5400 Bradenton Road, Sarasota, Florida 34234-2999

**Telephone**

941.355.7744

**Meet Period**

11/01/2013 to 04/12/2014

**Fax**

941.351.2207

**Racing Results**

Performances	193	Purses Paid	\$786,386
Racing Days	137		
Paid Attendance	70,967		
Total Admission Tax	\$759		

**St. Johns Greyhound Park (Bayard Raceways, Inc.)**Jacksonville Greyhound Racing, Inc.  
St. Johns County**Website**[www.bestbetjax.com](http://www.bestbetjax.com)**Mailing Address**

Post Office Box 959, Orange Park, Florida 32067-0959

**Telephone**

904.646.0001

**Street Address**

6322 Racetrack Road, Jacksonville, Florida 32259-2107

**Fax**

904.646.0420

**Meet Period** 12/09/2013 to 05/25/2014 at Orange Park**Racing Results**

Performances	190	Purses Paid	\$1,861,929
Racing Days	142		
Paid Attendance	0		
Total Admission Tax	\$0		

**Tampa Greyhound Track**Associated Outdoor Clubs, Inc.  
Hillsborough County**Website**[www.luckyscards.com](http://www.luckyscards.com)**Mailing Address**

Post Office Box 8096, Tampa, Florida 33674-8096

**Telephone**

813.932.4313

**Street Address**

8300 North Nebraska Avenue, Tampa, Florida 33604-3107

**Fax**

813.932.5048

**Meet Period** 07/01/2013 to 12/31/2013 at Derby Lane**Racing Results**

Performances	206	Purses Paid	\$2,067,849
Racing Days	155		
Paid Attendance	0		
Total Admission Tax	\$0		

**West Volusia Racing, Inc.**

Volusia County

See Daytona Beach Kennel Club's contact information for detail.**Meet Period** 10/01/2013 to 03/31/2014 at Daytona Beach Kennel Club**Racing Results**

Performances	279	Purses Paid	\$831,774
Racing Days	153		
Paid Attendance	0		
Total Admission Tax	\$0		





# JAI ALAI PERMITHOLDERS



Florida was the first state in the nation to conduct jai alai performances, with the first fronton being built in 1926. There are nine jai alai permitholders operating at six frontons throughout Florida. In fact, Florida is now the only state where live jai alai games are conducted. A total of 779 performances, including charity and scholarship performances, were conducted during this past fiscal year, a decrease of 23 percent from the previous fiscal year.

During Fiscal Year 2013/2014, handle wagered on live jai alai performances decreased by 15 percent. Intertrack handle wagered on broadcasts of live Florida jai alai performances increased by four percent. There are no longer any other states that conduct jai alai; therefore, there was no simulcast or intertrack simulcast handle. Total handle declined by three percent for the Florida jai alai industry.

Total jai alai revenue to the state increased by 30 percent during Fiscal Year 2013/2014. The jai alai industry accounted for approximately 3 percent of Florida's total revenue and 3 percent of total handle from pari-mutuel performances.

Permitholders reported paying a total of \$5,611,192 in players' awards. For more detail on players' awards paid, please refer to the following information by permitholder.

Total paid attendance increased by 128 percent from the prior year. The division reports only paid attendance; and does not include free admissions or complimentary passes in its data.

Total Performances	779	Total Paid Attendance	4,221
Total Gaming Days	623	Total Admission Tax	\$0

<b>Dania Jai Alai</b>			
Dania Entertainment Center, LLC Broward County			
<b>Website</b>	<a href="http://www.betdania.com">www.betdania.com</a>	<b>Telephone</b>	954.927.2841
<b>Mailing/Street Address</b>	301 East Dania Beach Boulevard, Dania Beach, Florida 33004-3016	<b>Fax</b>	954.925.7529
<b>Meet Period</b>	11/01/2013 to 06/28/2014		
<b>Gaming Results</b>			
Performances	225	Paid Attendance	0
Live Operating Days	161	Total Admission Tax	\$0
Players' Awards Paid	\$1,474,834		
<b>Dania Summer Jai Alai</b>			
Dania Entertainment Center, LLC Broward County			
<b>See Dania Jai Alai's contact information for detail.</b>			
<b>Meet Period</b>	07/02/2013 to 10/31/2013 at Dania Jai Alai		
<b>Gaming Results</b>			
Performances	104	Paid Attendance	0
Live Operating Days	77	Total Admission Tax	\$0
Players' Awards Paid	\$542,651		
<b>Ft. Pierce Jai Alai</b>			
Florida Gaming Centers, Inc. St. Lucie County			
<b>Website</b>	<a href="http://www.casinomiamijaijai.com">www.casinomiamijaijai.com</a>	<b>Telephone</b>	772.464.7500
<b>Mailing/Street Address</b>	1750 South Kings Highway, Ft. Pierce, Florida 34945-3099	<b>Fax</b>	772.464.0099
<b>Meet Period</b>	02/01/2014 to 03/31/2013		
<b>Miscellaneous Revenue to State</b>	\$34,218	(See Section 550.09511(4), Florida Statutes, for detail.)	
<b>Gaming Results</b>			
Performances	42	Paid Attendance	0
Live Operating Days	25	Total Admission Tax	\$0
Players' Awards Paid	\$210,041		

**Hamilton Jai Alai and Poker**Richmond Entertainment, Inc.  
Hamilton County

<b>Website</b>	<a href="http://www.hamiltondownsjaijai.com">www.hamiltondownsjaijai.com</a>	<b>Telephone</b>	386.638.0011
<b>Mailing/Street Address</b>	6968 US Highway 129 South, Jasper, Florida 32052-6774	<b>Fax</b>	386.638.0033
<b>Meet Period</b>	02/03/2014 to 06/11/2014 (Received license to conduct live performances but none were held.)		
<b>Gaming Results</b>			
Performances	0	Paid Attendance	0
Live Operating Days	0	Total Admission Tax	\$0
Players' Awards Paid	\$0		

**Magic City Jai Alai**West Flagler Associates, Ltd.  
Dade County**See Flagler Dog Track's contact information for details.****Meet Period** 05/01/2014 to 06/30/2014 (Received license to conduct live performances but none were held.)**Gaming Results**

Performances	0	Paid Attendance	0
Live Operating Days	0	Total Admission Tax	\$0
Players' Awards Paid	\$0		

**Miami Jai Alai**Florida Gaming Centers, Inc.  
Dade County

<b>Website</b>	<a href="http://www.casinomiamijaijai.com">www.casinomiamijaijai.com</a>	<b>Telephone</b>	305.633.6400
<b>Mailing/Street Address</b>	3500 N.W. 37th Avenue, Miami, Florida 33142-4923	<b>Fax</b>	305.634.7013
<b>Meet Period</b>	11/01/2013 to 04/30/2014		

**Gaming Results**

Performances	152	Paid Attendance	0
Live Operating Days	152	Total Admission Tax	\$0
Players' Awards Paid	\$1,603,965		

**Ocala Poker and Jai Alai**Second Chance Jai Alai, LLC  
Marion County

<b>Website</b>	<a href="http://www.ocalapoker.com">www.ocalapoker.com</a>	<b>Telephone</b>	352.591.2345
<b>Mailing Address</b>	Post Office Box 580, Orange Lake, Florida 32681	<b>Fax</b>	352.591.3402
<b>Street Address</b>	4601 N.W. Highway 318, Reddick, Florida 32686		
<b>Meet Period</b>	02/10/2014 to 03/10/2014		

**Miscellaneous Revenue to State** \$22,000 (See Section 550.09511(4), Florida Statutes, for detail.)**Gaming Results**

Performances	41	Paid Attendance	0
Live Operating Days	21	Total Admission Tax	\$0
Players' Awards Paid	\$145,972		

**Orlando Jai Alai**RB Jai Alai, LLC  
Seminole County

<b>Website</b>	<a href="http://www.orlandojaijai.com">www.orlandojaijai.com</a>	<b>Telephone</b>	407.339.6221
<b>Mailing/Street Address</b>	6405 South Highway 17-92, Fern Park, Florida 32730-2057	<b>Fax</b>	407.831.4689
<b>Meet Period</b>	07/01/2013 to 08/14/2013 and 04/04/2014 to 05/31/2014		

**Gaming Results**

Performances	85	Paid Attendance	4,221
Live Operating Days	57	Total Admission Tax	\$0
Players' Awards Paid	\$108,863		

**Summer Jai Alai**

Dade County

**See Miami Jai Alai's contact information for detail.****Meet Period** 08/02/2013 to 10/31/2013 and 05/01/2014 to 06/30/2014 at Miami Jai Alai**Miscellaneous Revenue to State** \$11,520 (See Section 550.09511(4), Florida Statutes, for detail.)**Gaming Results**

Performances	130	Paid Attendance	0
Live Operating Days	130	Total Admission Tax	\$0
Players' Awards Paid	\$1,524,866		



# THOROUGHBRED PERMITHOLDERS



Florida continues to be a premier thoroughbred racing state with five permitholders operating at three tracks located in Central and South Florida. A total of 417 performances, including charity and scholarship performances, were conducted during this past fiscal year, an increase of 26 percent from the previous fiscal year.

During Fiscal Year 2013/2014, handle on live thoroughbred performances decreased six percent. Handle from intertrack wagering increased one percent. Simulcast handle wagered on broadcasts of performances from outside the state increased by 41 percent. Intertrack simulcast handle decreased by 17 percent. Overall, total handle decreased by approximately two percent for the Florida thoroughbred industry.

Total thoroughbred revenue to the state during Fiscal Year 2013/2014, increased by approximately eight percent from the prior year. The thoroughbred industry accounted for approximately 60.8 percent of Florida's total revenue and 62.2 percent of total handle from pari-mutuel performances.

Permitholders reported paying a total of \$87,722,477 in purses. For more detail on purses paid, please refer to the following information by permitholder. The Florida Thoroughbred Breeders' and Owners' Association did not dispute the amount of purses paid reported by the permitholders.

Total paid attendance decreased by seven percent from the prior year. The division reports only paid attendance; and does not include free admissions or complimentary passes in its data.

Total Performances	417	Total Paid Attendance	94,103
Total Racing Days	417	Total Admission Tax	\$18,795

<b>Calder Race Course, Inc.</b>			
Churchill Downs, Inc. Dade County			
<b>Website</b>	<a href="http://www.calderracecourse.com">www.calderracecourse.com</a>	<b>Telephone</b>	305.625.1311
<b>Mailing/Street Address</b>	21001 N.W. 27th Avenue, Miami Gardens, Florida 33056-1461	<b>Fax</b>	305.625.2505
<b>Meet Period</b>	07/05/2013 to 08/31/2013 and 01/03/2014 to 06/29/2014		
<b>Racing Results</b>			
Performances	105	Purses Paid	\$20,209,123
Racing Days	105		
Paid Attendance	0		
Total Admission Tax	\$0		
<b>Gulfstream Park Racing Association, Inc.</b>			
Stronach Group Broward County			
<b>Website</b>	<a href="http://www.gulfstreampark.com">www.gulfstreampark.com</a>	<b>Telephone</b>	954.454.7000
<b>Mailing/Street Address</b>	901 South Federal Highway, Hallandale Beach, Florida 33009-7124	<b>Fax</b>	954.457.6913
<b>Meet Period</b>	07/01/2013 to 06/29/2014		
<b>Racing Results</b>			
Performances	165	Purses Paid	\$47,531,649
Racing Days	165		
Paid Attendance	0		
Total Admission Tax	\$0		
<b>Gulfstream Park Thoroughbred After Racing Program, Inc.</b>			
Stronach Group Broward County			
<b>See Gulfstream Park Racing Association, Inc.'s contact information for detail.</b>			
<b>Meet Period</b>	07/01/2013 , 12/18/2013 and 06/30/2013		
<b>Racing Results</b>			
Performances	3	Purses Paid	\$0
Racing Days	3		
Paid Attendance	0		
Total Admission Tax	\$0		

**Tampa Bay Downs, Inc.**

Hillsborough County

**Website**

[www.tampabaydowns.com](http://www.tampabaydowns.com)

**Mailing Address**

Post Office Box 2007, Oldsmar, Florida 34677

**Telephone**

813.855.4401

**Street Address**

11225 Race Track Road, Tampa, Florida 33626-3122

**Fax**

813.261.1961

**Meet Period**

07/01/2013 and 12/04/2013 to 05/04/2014 and 06/30/2014

**Racing Results**

Performances 91  
Racing Days 91  
Paid Attendance 94,103  
Total Admission Tax \$18,795

Purses Paid \$16,180,935

**Tropical Park, Inc.**

Churchill Downs, Inc.  
Dade County

**See Calder's contact information for detail.**

**Meet Period**

09/01/2013 to 12/29/2013 at Calder Race Course

**Racing Results**

Performances 53  
Racing Days 53  
Paid Attendance 0  
Total Admission Tax \$0

Purses Paid \$3,800,770



# QUARTER HORSE PERMITHOLDERS



There are five permitholders conducting quarter horse racing performances at five tracks located in the State of Florida. In Fiscal Year 2013/2014, a total of 100 performances were conducted.

During Fiscal Year 2013/2014, handle wagered on live quarter horse performances increased by 24 percent. Intertrack handle wagered on broadcasts of performances decreased by 17 percent. Simulcast handle wagered on broadcasts of performances from outside the state had no changes, along with intertrack simulcast handle. Overall, total handle increased by 18 percent for the Florida quarter horse industry.

Total quarter horse revenue to the state during Fiscal Year 2013/2014, experienced minimal change. The quarter horse industry accounted for approximately 0.8 percent of Florida's total revenue and 0.2 percent of total handle from pari-mutuel performances.

Permitholders reported paying a total of \$6,188,091 in purses. For more detail on purses paid, please refer to the following information by permitholder. The Florida Quarter Horse Breeders' and Owners' Association was able to confirm the amount of purses paid reported by Hialeah Park.

The division reports only paid attendance; and does not include free admissions or complimentary passes in its data.

Total Performances	100	Total Paid Attendance	0
Total Racing Days	57	Total Admission Tax	\$0

<b>Gretna Racing, LLC</b>			
Gadsden County			
<b>Website</b>	<a href="http://www.creekenentertainment.com">www.creekenentertainment.com</a>	<b>Telephone</b>	850.875.6930
<b>Mailing Address</b>	Post Office Box 70, Gretna, Florida 32332	<b>Fax</b>	850.875.6937
<b>Street Address</b>	501 Racetrack Drive, Gretna, Florida 32332		
<b>Meet Period</b>	09/07/2013 to 12/08/2013		
<b>Racing Results</b>		Purses Paid	\$167,591
Performances	38		
Racing Days	10		
Paid Attendance	0		
Total Admission Tax	\$0		
<b>Hamilton Downs Horsetrack, LLC</b>			
Hamilton County			
<b>Website</b>	<a href="http://www.hamiltondownsjaijai.com">www.hamiltondownsjaijai.com</a>	<b>Telephone</b>	386.638.0011
<b>Mailing Address</b>	6968 US Highway 129 South, Jasper, Florida 32052-6774	<b>Fax</b>	386.638.0033
<b>Street Address</b>	2220 Northwest County Road 143, Jennings, Florida 32053		
<b>Meet Period</b>	06/18/2014 to 06/22/2014		
<b>Racing Results</b>		Purses Paid	\$17,500
Performances	20		
Racing Days	5		
Paid Attendance	0		
Total Admission Tax	\$0		
<b>Hialeah Park</b>			
South Florida Racing Association, LLC			
Dade County			
<b>Website</b>	<a href="http://www.hialeahparkcasino.com">www.hialeahparkcasino.com</a>	<b>Telephone</b>	305.885.8000
<b>Mailing Address</b>	Post Office Box 158, Hialeah, Florida 33011	<b>Fax</b>	305.887.8006
<b>Street Address</b>	2200 East 4th Avenue, Hialeah, Florida 33010		
<b>Meet Period</b>	11/29/2013 to 02/23/2014		
<b>Racing Results</b>		Purses Paid	\$5,600,000
Performances	40		
Racing Days	40		
Paid Attendance	0		
Total Admission Tax	\$0		

**Ocala Breeder's Sales Company, Inc.**

Marion County

<b><u>Website</u></b>	<a href="http://www.obssales.com">www.obssales.com</a>	<b><u>Telephone</u></b>	352.237.2154
<b><u>Mailing Address</u></b>	Post Office Box 99, Ocala, Florida 34478-0099	<b><u>Fax</u></b>	352.237.3566
<b><u>Street Address</u></b>	1701 Southwest 60th Avenue, Ocala, Florida 34474-1800		
<b><u>Meet Period</u></b>	1/21/2014		
<b><u>Racing Results</u></b>			
Performances	1	Purses Paid	\$385,000
Racing Days	1		
Paid Attendance	0		
Total Admission Tax	\$0		

**South Marion Real Estate Holdings, LLC**

Central Florida Gaming, LLC  
Marion County

<b><u>Website</u></b>	Not Listed	<b><u>Telephone</u></b>	352.817.7522
<b><u>Mailing Address</u></b>	Post Office Box 757, Oxford, Florida 34487	<b><u>Fax</u></b>	None Listed
<b><u>Street Address</u></b>	6390 S.E. 177th Place, Summerfield, Florida 34491		
<b><u>Meet Period</u></b>	4/7/2014		
<b><u>Racing Results</u></b>			
Performances	1	Purses Paid	\$18,000
Racing Days	1		
Paid Attendance	0		
Total Admission Tax	\$0		



# HARNESS PERMITHOLDERS



Pompano Park is the only permitholder conducting harness horse racing performances in the State of Florida. A total of 126 performances, including charity and scholarship performances, were conducted during this past fiscal year, a decrease of 10 percent from the previous fiscal year.

During Fiscal Year 2013/2014, handle wagered on live harness performances decreased by 11 percent. Intertrack handle wagered on broadcasts of live Florida harness performances decreased by three percent. Simulcast handle wagered on broadcasts of performances from outside the state decreased by 12 percent while intertrack simulcast handle decreased by 10 percent. Overall, total handle decreased by 10 percent for the Florida harness industry.

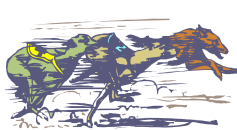
Total revenue to the state during Fiscal Year 2013/2014, decreased by nine percent from the prior fiscal year. The harness industry accounted for approximately 6.5 percent of Florida's total revenue and 5.0 percent of total handle from pari-mutuel performances.

Pompano Park reported paying \$7,243,689 in purses. For more detail on purses paid, please refer to the information below. The Florida Standardbred Breeders' and Owners' Association was able to confirm the amount of purses paid reported by Pompano Park.

The division reports only paid attendance; and does not include free admissions or complimentary passes in its data.

Total Performances	126	Total Paid Attendance	0
Total Racing Days	126	Total Admission Tax	\$0

<b>Isle Casino and Racing at Pompano Park</b>			
PPI, Inc. Broward County			
<b>Website</b>	<a href="http://pompano-park.isleofcapricasinos.com">pompano-park.isleofcapricasinos.com</a>	<b>Telephone</b>	954.972.2000
<b>Mailing/Street Address</b>	1800 Southwest 3rd Street, Pompano Beach, Florida 33069-3106	<b>Fax</b>	954.978.0377
<b>Meet Period</b>	07/03/2013 to 07/27/2013 and 10/05/2013 to 05/24/2014		
<b>Racing Results</b>			
Performances	126	Purses Paid	\$7,243,689
Racing Days	126		
Paid Attendance	0		
Total Admission Tax	\$0		



## SUMMARY

# PARI-MUTUEL INDUSTRY

During Fiscal Year 2013/2014, the total handle wagered for all industries exceeded \$850 million, a decrease of three percent from the prior fiscal year. Total pari-mutuel performances, including charity and scholarship performances, conducted during Fiscal Year 2013/2014, decreased by three percent from the previous fiscal year.

The state realized revenue from performances of approximately \$11.9 million, an increase of four percent from the prior fiscal year. Of the \$11.9 million collected, greyhound permitholders accounted for 28.9 percent, thoroughbreds for 60.8 percent, harness for 6.5 percent, jai alai for 3.0 percent, and quarter horse for 0.8 percent.

Total paid attendance decreased eight percent from the prior year. The division reports only paid attendance; and does not include free admission or complimentary passes in its data.



## HORSE RACING

### Promotional Programs for Florida-Bred Horses \*

Florida breeder promotions and award programs are administered by private breeders' and owners' associations organized to promote ownership and breeding of race horses in the State of Florida. Each association conducts its own campaign to enhance the horse breeding industry in the state and provides breeders' and owners' awards of up to 20 percent of announced gross purses. The Florida Standardbred Breeders' and Owners' Association is funded by the breaks and uncashed tickets from live performances and one percent of the intertrack handle. The Quarter Horse Breeders' Association is funded by the breaks and the uncashed tickets from live races and one percent of the live and intertrack handle. The Florida Thoroughbred Breeders' and Owners' Association awards program is funded by 0.955 percent of the live, simulcast and intertrack handle, as well as 3.475 percent of the gross revenue from out-of-state wagers on Florida races.

To date, the Florida thoroughbred breeding industry has produced 50 national champions. Florida also produced "Affirmed," still the last horse to have swept the Triple Crown (1978). Ocala/Marion County, Florida, is home to some of the leading breeding farms in the country. The industry boasts 19 classic wins (Kentucky Derby, Preakness Stakes and Belmont Stakes), 26 Breeders' Cup Day champions and six horses of the year.

The Florida Thoroughbred Breeders' and Owners' Association (FTBOA) funds the Florida-bred Stakes Program, which is implemented at Florida's Thoroughbred racetracks. Through a percentage of pari-mutuel handle, Florida Thoroughbred permitholders contributed \$7,205,319 to the FTBOA during Fiscal Year 2013/2014. The FTBOA paid out \$5,310,690 in Breeders' Awards and \$1,986,992 through the Florida-bred Stakes Program. The Florida-bred Stakes Program includes "The Sunshine Millions" at Gulfstream Park, "The Florida Million" at Calder Race Course/Tropical Park, "Florida Cup Day" at Tampa Bay Downs and additional funds for supplements to Florida-bred Preferred Stakes Races during the Calder/Tropical and Tampa Bay Downs' meets.

The Florida Standardbred Breeders' and Owners' Association, a non-profit organization and the only organized representative of Standardbred horsemen in the State of Florida, is the designated association for the allocation and distribution of funds for Florida-bred racing. Promotional activities include providing breeder and stallion awards for eligible Florida-bred horses during Pompano Park's 2013/2014 meet as well as awards for Florida Breeders' Stake races. A series of races and awards were also provided for two and three-year-old Standardbreds to prepare for the winter meet at Pompano Park. The total amount of funds collected and distributed to the Florida Standardbred horsemen throughout the year exceeded \$400,000.

*\* Note: This promotional program information is provided by respective Breeders' and Owners' Associations.*



**UNIVERSITY OF FLORIDA  
COLLEGE OF VETERINARY MEDICINE RACING LABORATORY**

The Florida Racing Laboratory in the College of Medicine at the University of Florida is an International Organization for Standardization ISO 17025 accredited laboratory that employs various procedures to detect and identify prohibited drugs, medications, stimulants, depressants, hypnotics, local anesthetics, and drug-masking agents in the blood, urine or other bodily fluids of racing horses and greyhounds.

During Fiscal Year 2013/2014, the Laboratory received and processed 79,600 samples and performed 344,289 analyses. The vigilant monitoring of samples by the Laboratory serves to deter the use of prohibited drugs in racing animals in Florida.

	Horse Urine/Blood	Greyhound Urine <sup>1</sup>	Investigative
<b>Samples Received</b>	15,816	63,757	27
<b>Samples Analyzed</b>	16,066	43,631	27
<b>Number of Analyses</b>	76,316	267,885	88
<b>Positives</b>	208	42	N/A

<sup>1</sup> Volume Not Sufficient For Testing 20,044 (31.4% of total number of samples received)

<b>DRUG POSITIVES FOR FISCAL YEAR 2013/2014</b>		
<i>Types of Positives (ARCI Drug Class)</i>	<i>Horse</i>	<i>Greyhound</i>
Acepromazine metabolite (3)	1	0
Benzoyllecgonine (1)	1	1
Benzoyllecgonine (1), Cocaine (1)	1	3
Benzoyllecgonine (1), Cocaine (1) Ecgonine Methyl Ester (1)	2	2
Boldenone (3)	4	0
Caffeine (2), Theophylline (3)	3	0
Caffeine (2), Theobromine (4), Theophylline (3)	1	1
Carprofen (4)	0	1
Clenbuterol (3)	81	0
Clenbuterol (3), Dimethylsulfoxide (DMSO) (5)	1	0
Clenbuterol (3), Acepromazine metabolite (3), Phenylbutazone (n/a)	1	0
Clenbuterol (3), Methocarbamol (4)	1	0
Clenbuterol (3), Phenylbutazone (n/a)	2	0
Dimethylsulfoxide (DMSO) (5)	8	0
Flunixin (4)	8	6
Glycopyrrolate (3)	2	0
Glycopyrrolate (3), Phenylbutazone (N/A)	1	0
Guaifenesin (4)	1	0
Guanabenz (3)	1	0
Isoxsuprine (4)	1	0
Ketoprofen (4)	1	0
Lidocaine (3), MEGX (3)	0	2
Lidocaine (3), MEGX (3), 3-Hydroxy lidocaine	0	1
Lidocaine (3), MEGX (3), 3-Hydroxy lidocaine, 4-Hydroxy lidocaine	0	3
Methocarbamol (4)	2	0
Naproxen (4)	3	0
Oxycodone (1), Oxymorphone (1)	0	2
Phenylbutazone (N/A)	74	0
Procaine (3)	0	13
Strychnine (1)	1	0
Testosterone (4)	3	0
Testosterone (4), Nandrolone (4)	1	0
Testosterone (4), Nandrolone (4), Dimethylsulfoxide (DMSO) (5)	1	0
Theobromine (4)	0	3
Theobromine (4), Theophylline (3)	0	4
Tramadol (2) reported as O-Desmethyiltramadol	1	0
<b>TOTALS</b>	<b>208</b>	<b>42</b>

Class (1): Stimulant and depressant drugs that have the highest potential to affect performance and that have no generally accepted medical use in the racing horse.

Class (2): Drugs that have a high potential to affect performance, but less of a potential than drugs in Class 1.

Class (3): Drugs that may or may not have generally accepted medical use in the racing horse, but the pharmacology of which suggests less potential to affect performance than drugs in Class 2.

Class (4): This class includes therapeutic medications that would be expected to have less potential to affect performance than those in Class 3.

Class (5): This class includes therapeutic medications for which concentration limits have been established by the racing jurisdictions as well as certain miscellaneous agents such as dimethylsulfoxide (DMSO) and other medications as determined by the regulatory bodies.

# FINANCIAL STATEMENTS

**DIVISION OF PARI-MUTUEL WAGERING  
SUMMARY OF STATE REVENUE FROM PARI-MUTUEL, CARDROOM,  
SLOT ACTIVITIES, AND INDIAN GAMING COMPACT  
FISCAL YEAR 2013/2014**

<b>State Revenue From Regular Performances</b>	
Tax on Attendance	\$ 30,926
Daily License Fees	2,536,983
Tax on Handle	9,382,726
<b>State Revenue From Pari-Mutuel Performances</b>	<u>\$ 11,950,635</u>
<b>Other State Revenue</b>	
Occupational Licenses	\$ 408,350
Fingerprint Fees	192,677
Escheated Tickets <sup>(1)</sup>	885,676
Racing Scholarship Funds <sup>(1)</sup>	736
PMW Trust Fund - Drug Fines	86,550
Miscellaneous Revenue	215,374
General Revenue Fund - Other Fines	45,683
<b>Other State Revenue</b>	<u>\$ 1,835,046</u>
<b>Total Pari-Mutuel State Revenue</b>	<u>\$ 13,785,681</u>
<b>State Revenue From Cardrooms</b>	
Table Fees	\$ 742,000
Gross Receipts <sup>(2)</sup>	13,615,464
Occupational Licenses	96,273
<b>Total State Revenue From Cardrooms</b>	<u>\$ 14,453,737</u>
<b>State Revenue From Slots</b>	
Compulsive/Addictive Gambling Fee <sup>(4)</sup>	\$ 1,750,000
Facility License Fee <sup>(4)</sup>	14,000,000
Slot Taxes <sup>(3)</sup>	174,024,068
Fingerprint Fees	44,998
Occupational Licenses	317,195
Miscellaneous Revenue	2,774
Miscellaneous Fines	23,200
<b>Total State Revenue From Slots</b>	<u>\$ 190,162,235</u>
<b>Total State Revenue Generated From Pari-Mutuel, Cardroom, and Slots</b>	<u>\$ 218,401,653</u>
<b>State Revenue From Indian Gaming Compact</b>	
Indian Gaming Compact <sup>(5)</sup>	\$ 237,312,301
Indian Gaming Compact Reimbursements	270,434
<b>Total State Revenue From Indian Gaming Compact</b>	<u>\$ 237,582,735</u>
<b>TOTAL STATE REVENUE GENERATED</b>	<u><u>\$ 455,984,388</u></u>

<sup>(1)</sup> Escheated tickets and Racing Scholarship Funds are distributed to the Department of Education.

<sup>(2)</sup> One-half of cardroom gross receipts is deposited into the General Revenue Fund.

<sup>(3)</sup> Slot taxes are distributed to the Department of Education.

<sup>(4)</sup> Both amounts include payments from: Gulfstream Park Racing and Casino, Mardi Gras Racetrack and Gaming Center, Isle Casino and Racing at Pompano Park, Flagler Dog Track and Magic City Casino, Miami Jai Alai, Dania Jai Alai, and South Florida Racing Association (Hialeah Park). Payment for two licensing periods (2013/2014 and 2014/2015) from Calder Casino and Race Course were received during 2012/2013 and 2014/2015 respectively.

<sup>(5)</sup> Indian Gaming Compact payments are deposited into the General Revenue Fund.

**DEPARTMENT OF BUSINESS & PROFESSIONAL REGULATION**  
**DIVISION OF PARI-MUTUEL WAGERING**  
**BALANCE SHEET**  
**SPECIAL REVENUE FUND**  
**FOR FISCAL YEAR ENDED JUNE 30, 2014**

	<u>2014</u>	<u>2013</u>
<b>ASSETS</b>		
Cash with State Treasurer	\$ 656,790	\$ 1,314,252
Investments at cost	6,731,219	6,377,222
Accounts receivable	348,128	385,298
Taxes receivable	15,266,142	14,531,005
Allowance for uncollectibles	(32,884)	(3,067)
Interest receivable	11,371	5,528
Due from state funds	<u>175,988</u>	<u>87,479</u>
<b>TOTAL ASSETS</b>	<b>\$ <u>23,156,753</u></b>	<b>\$ <u>22,697,718</u></b>
 <b>LIABILITIES &amp; FUND EQUITY</b>		
Liabilities:		
Accounts payable	\$ 131,567	\$ 90,584
Accrued salaries	245,289	203,882
Due to other funds	4,325	423
Due to other state agencies	13,612,023	12,718,272
Due to general revenue	665,939	850,265
Compensated absences	<u>9,313</u>	<u>4,024</u>
Total Liabilities	<u>14,668,455</u>	<u>13,867,451</u>
 <b>Fund Equity</b>		
Unreserved	<u>8,488,298</u>	<u>8,830,267</u>
Total Fund Equity	<u>8,488,298</u>	<u>8,830,267</u>
<b>TOTAL LIABILITIES &amp; FUND EQUITY</b>	<b>\$ <u>23,156,753</u></b>	<b>\$ <u>22,697,718</u></b>

The financial statements and notes are for informational purposes only.

**DEPARTMENT OF BUSINESS AND PROFESSIONAL REGULATION**  
**DIVISION OF PARI-MUTUEL WAGERING**  
**STATEMENT OF REVENUES, EXPENDITURES & CHANGES IN FUND BALANCE - BUDGET & ACTUAL**  
**SPECIAL REVENUE FUND**  
**FOR FISCAL YEAR ENDED JUNE 30, 2014**

	<b>FINAL BUDGET</b>	<b>2014 ACTUAL</b>	<b>VARIANCE</b>	<b>2013 ACTUAL</b>
<b>REVENUES:</b>				
Fees, Charges, Commissions and Sales	\$ 19,362,105	\$ 19,569,151	\$ 207,046	\$ 21,717,869
Licenses and Permits	623,872	502,696	(121,176)	623,444
Taxes	186,579,087	190,162,520	3,583,433	168,370,631
Fines, Forfeits, Judgments and Settlements	74,750	116,787	42,037	170,930
Interest and Dividends, Net	87,915	84,893	(3,022)	140,905
Refunds	311,958	270,769	(41,189)	205,097
Miscellaneous Receipts	200,000	213,872	13,872	128,550
<b>Total Revenues</b>	<b>207,239,687</b>	<b>210,920,688</b>	<b>3,681,001</b>	<b>191,357,426</b>
<b>EXPENDITURES</b>				
<b>CURRENT OPERATING</b>				
Salaries	7,134,883	6,429,448	705,434	5,954,061
Other Personal Services	1,718,301	1,237,420	480,880	1,258,379
Other Operating Expenditures	1,000,037	736,549	263,488	710,738
Operation of Motor Vehicles	86,987	78,141	8,846	71,407
Risk Management	105,689	105,689	-	126,433
State Attorney-Slots	210,210	208,651	1,559	169,102
PMW Lab Services	2,266,000	2,266,000	-	2,266,000
PMW Compliance System	337,542	246,415	91,127	309,918
Tr/DMS/HR SVCS/STW Contract	57,114	57,114	-	60,071
Cardroom Tax Distribution	1,700,000	1,658,542	41,458	1,643,208
Other Contracted Services	112,887	31,082	81,806	39,577
Compulsive Gambling Prevention	609,314	600,000	9,314	600,000
Racing Animal Med Research	100,000	100,000	0	78,664
<b>OPERATING CAPITAL OUTLAY</b>	<b>32,532</b>	<b>32,240</b>	<b>292</b>	<b>45,926</b>
Acquisition of Motor Vehicles	54,802	54,798	4	53,250
Assessment for Fingerprinting	460,400	320,769	139,631	261,911
Service Charge to General Revenue	3,121,382	2,937,007	184,375	2,977,324
Refunds	164,650	132,397	32,253	41,661
Transfer to FDLE Slots Investigation	232,730	-	232,730	-
Transfers to Other Funds	175,994,212	175,530,395	463,817	156,292,715
Transfers to General Revenue	23,500,000	18,500,000	5,000,000	16,800,000
<b>Total Expenditures</b>	<b>218,999,671</b>	<b>211,262,657</b>	<b>7,737,014</b>	<b>189,760,345</b>
<b>Excess (Deficiency) of Revenues Over (Under) Expenditures</b>	<b>(11,759,984)</b>	<b>(341,969)</b>	<b>(4,056,013)</b>	<b>1,597,080</b>
<b>FUND BALANCE JULY 1, 2013</b>	<b>8,830,267</b>	<b>8,830,267</b>	<b>-</b>	<b>7,233,187</b>
<b>FUND BALANCE JUNE 30, 2014</b>	<b>\$ (2,929,717)</b>	<b>\$ 8,488,298</b>	<b>\$ (4,056,013)</b>	<b>\$ 8,830,267</b>
	(1)	(1)		

(1) Does not include budget of \$ 37,000,000 for category 190000 Investments. Actual expenditures for category 190000 were closed into the investment account.

The financial statements and notes are for informational purposes only.

CARDROOM, PARI-MUTUEL, AND  
SLOT STATUTE MATRIX

STATUTE TOPIC	GREYHOUND	JAI ALAI	THOROUGHBRED	HARNESS	QUARTER HORSE
<b>FEES</b>					
<b>Daily License Fees On Live / On-track Handle</b>	\$80 per race. <u>550.0951(1)(a), F.S.</u>	\$40 per game. <u>550.0951(1)(a), F.S.</u>	\$100 per race. <u>550.0951(1)(a), F.S.</u>	\$100 per race. <u>550.0951(1)(a), F.S.</u>	\$100 per race. <u>550.0951(1)(a), F.S.</u>
<b>Daily License Fees On Simulcast Handle</b>	\$80 per race, but not to exceed \$500 per day. <u>550.0951(1)(a), F.S.</u>	\$40 per game, but not to exceed \$500 per day. <u>550.0951(1)(a), F.S.</u>	\$100 per race, but not to exceed \$500 per day. <u>550.0951(1)(a), F.S.</u>	\$100 race, but not to exceed \$500 per day. <u>550.0951(1)(a), F.S.</u>	\$100 per race, but not to exceed \$500 per day. <u>550.0951(1)(a), F.S.</u>
<b>OUTS (ESCHEATS)</b>					
<b>Live / On-track Handle</b>	Paid to the state of Florida. <u>550.1645(2), F.S.</u>	Paid to the state of Florida. <u>550.1645(2), F.S.</u>	Retained by permitholder. <u>550.2633(3), F.S.</u>	Paid to Florida Standardbred Breeders' and Owners' Association (FSBOA). <u>550.26165(1) and 550.2633(2)(a), F.S.</u>	Paid to Florida Quarter Horse Breeders' and Owners Association (FQHBOA). <u>550.26165(1) and 550.2633(2)(b), F.S.</u>  Escheats from Arabian races are paid to Florida Arabian Horse Racing Promotion Account. <u>550.2633(2)(c), F.S.</u>
<b>TAXES</b>					
<b>Tax On Admissions</b>	15% of admission charge, or 10 cents, whichever is greater, for entrance to facility and grandstand. <u>550.0951(2)(a), F.S.</u>  No tax is imposed on free passes or complimentary cards. <u>550.0951(2)(b) and (c), F.S.</u>	15% of admission charge, or 10 cents, whichever is greater, for entrance to facility and grandstand. <u>550.0951(2)(a), F.S.</u>  No tax is imposed on free passes or complimentary cards. <u>550.0951(2)(b) and (c), F.S.</u>	15% of admission charge, or 10 cents, whichever is greater, for entrance to facility and grandstand. <u>550.0951(2)(a), F.S.</u>  No tax is imposed on free passes or complimentary cards. <u>550.0951(2)(b) and (c), F.S.</u>	15% of admission charge, or 10 cents, whichever is greater, for entrance to facility and grandstand. <u>550.0951(2)(a), F.S.</u>  No tax is imposed on free passes or complimentary cards. <u>550.0951(2)(b) and (c), F.S.</u>	15% of admission charge, or 10 cents, whichever is greater, for entrance to facility and grandstand. <u>550.0951(2)(a), F.S.</u>  No tax is imposed on free passes or complimentary cards. <u>550.0951(2)(b) and (c), F.S.</u>
<b>Tax On Live / On-track Handle</b>	5.5% of handle, except for charity performances which is 7.6% of handle. <u>550.0951(3)(b)1., F.S.</u>	Effective July 1, 2000, a permitholder may not be taxed at a higher rate than 2%. <u>550.0951(3)(d), F.S.</u>	0.5% of handle. <u>550.09515(2)(a), F.S.</u>	0.5% of handle. <u>550.09512(2)(a), F.S.</u>	1% of handle. <u>550.0951(3)(a), F.S.</u>
<b>Tax On Simulcast Handle</b>	Allows permitholders to receive greyhound races from out-of-state, and are subject to taxation under 550.0951 and 550.09511. <u>550.3551(4), F.S.</u>	Allows permitholders to receive jai alai games from out-of-state, and are subject to taxation under 550.0951 and 550.09511. <u>550.3551(4), F.S.</u>	Allows permitholders to receive horse races from out-of-state, and are subject to taxation under 550.0951, 550.09512, and 550.09515. <u>550.3551(3) through 550.3551(3)(c), F.S.</u>	Allows permitholders to receive horse races from out-of-state, and are subject to taxation under 550.0951, 550.09512, and 550.09515. <u>550.3551(3) through 550.3551(3)(c), F.S.</u>	Allows permitholders to receive horse races from out-of-state, and are subject to taxation under 550.0951, 550.09512, and 550.09515. <u>550.3551(3) through 550.3551(3)(c), F.S.</u>

This matrix represents a summary of 2013 Statutes. Please refer to the cite noted by statutory topic for specific language governing pari-mutuel wagering.

STATUTE TOPIC	GREYHOUND	JAI ALAI	THOROUGHBRED	HARNESS	QUARTER HORSE
<b>Tax On Intertrack and Intertrack Simulcast Handle</b>	5.5% of intertrack and intertrack simulcast handle; except for the intertrack handle from charity performances at a guest track within the market area of the host, the tax is 7.6%. <b><u>550.0951(3)(b)1 and 550.0951(3)(c)1, F.S.</u></b>	7.1% of intertrack and intertrack simulcast handle. <b><u>550.0951(3)(b)2. and 550.0951(3)(c)1., F.S.</u></b>	2% of intertrack handle. <b><u>550.0951(3)(c)1., F.S.</u></b>	3.3% of intertrack handle. <b><u>550.0951(3)(c)1., F.S.</u></b>	2% of intertrack handle. <b><u>550.0951(3)(c)1., F.S.</u></b>
	0.5% of intertrack and intertrack simulcast handle, if the guest is located outside market area of host and within market area of thoroughbred track conducting a live meet. <b><u>550.0951(3)(c)1., F.S.</u></b>	0.5% of intertrack and intertrack simulcast handle, if the guest is located outside market area of host and within market area of thoroughbred track conducting a live meet. <b><u>550.0951(3)(c)1., F.S.</u></b>	2.4% of intertrack simulcast handle. <b><u>550.0951(3)(c)1. and 550.09515(5), F.S.</u></b>	1.5% of intertrack simulcast handle. <b><u>550.0951(3)(c)1., F.S.</u></b>	2.4% of intertrack simulcast handle. <b><u>550.0951(3)(c)1. and 550.09515(5), F.S.</u></b>
	3.9% of intertrack and intertrack simulcast handle, for permitholders located in an area of the state where there are only 3 greyhound permitholders, located in 3 contiguous counties. <b><u>550.0951(3)(c)2., F.S.</u></b>	3.3% of intertrack and intertrack simulcast handle, if permitholder restricted from operating live on a year-round basis, and tax paid on intertrack handle exceeds that paid during 92/93 State Fiscal Year. <b><u>550.09511(3)(a), F.S.</u></b>	0.5% of intertrack and intertrack simulcast handle, if host and guest are thoroughbred permitholders, or if the guest is located outside market area of host and within market area of thoroughbred track conducting a live meet. <b><u>550.0951(3)(c)1., F.S.</u></b>	0.5% of intertrack and intertrack simulcast handle, if the guest is located outside market area of host and within market area of thoroughbred track conducting a live meet. <b><u>550.0951(3)(c)1., F.S.</u></b>	0.5% of intertrack and intertrack simulcast handle, if the guest is located outside market area of host and within market area of thoroughbred track conducting a live meet. <b><u>550.0951(3)(c)1., F.S.</u></b>
	3.9% of intertrack and intertrack simulcast handle, for greyhound permitholders located in the same market area specified in 550.615(9). <b><u>550.0951(3)(c)2., F.S.</u></b>	6.1% of intertrack and intertrack simulcast handle, for jai alai permitholders located in the market area as specified in 550.615(6) or (9), until the tax paid on intertrack handle in the current state fiscal year exceeds that paid during 92/93 State Fiscal Year, then tax on handle is 2.3%. <b><u>550.0951(3)(c)2., F.S.</u></b>	0.5% of intertrack simulcast handle, if guest track is a thoroughbred track located more than 35 miles from host track. <b><u>550.09515(5), F.S.</u></b>		
<b>CHARITY PERFORMANCES</b>					
	Maximum of five days. <b><u>550.0351(1), F.S.</u></b>  Permitholders are allowed to conduct one additional day to be designated as "Greyhound Adopt-A-Pet Day." Proceeds are paid to "bona fide organizations" that promote the adoption of greyhounds. <b><u>550.1648(2), F.S.</u></b>  Permitholders shall pay from any source, including charity performances, not less than 10% of tax credit from escheated tickets to a bona fide greyhound adoption program. <b><u>550.1647, F.S.</u></b>	Maximum of five days. <b><u>550.0351(1), F.S.</u></b>  Permitholders are allowed to conduct two additional performances known as "Retired Jai Alai Players' Charity Day" for a fund to benefit retired jai alai players. <b><u>550.0351(8), F.S.</u></b>	Maximum of five days. <b><u>550.0351(1), F.S.</u></b>  One additional scholarship day to tracks located in Hillsborough County for the benefit of Pasco-Hernando Community College. <b><u>550.0351(6)(a) and 550.0351(6)(b), F.S.</u></b>	Maximum of five days. <b><u>550.0351(1), F.S.</u></b>	Maximum of five days. <b><u>550.0351(1), F.S.</u></b>

This matrix represents a summary of 2013 Statutes. Please refer to the cite noted by statutory topic for specific language governing pari-mutuel wagering.



STATUTE TOPIC	GREYHOUND	JAI ALAI	THOROUGHBRED	HARNESS	QUARTER HORSE
<b>TAX CREDITS &amp; EXEMPTIONS</b>					
<b>(excluding charity performances, unless otherwise noted)</b>	<p>Tax exemption of \$360,000 per state fiscal year, or \$500,000 for three permitholders that held a full live schedule in 1995, and closest to another state authorizing greyhound racing. <b><u>550.09514(1), F.S.</u></b></p> <p>Tax credit each state fiscal year equal to daily license fee on live races in previous state fiscal year. <b><u>550.0951(1)(a), F.S.</u></b></p> <p>Allows each permitholder that cannot utilize the full amount of the tax exemption or daily license fee tax credit, elect once per state fiscal year to transfer the unused portion to a greyhound permitholder acting as a host track for intertrack wagering. <b><u>550.0951(1)(b), F.S.</u></b></p> <p>Tax credit each state fiscal year in an amount equal to the amount remitted in escheated tickets in prior state fiscal year. <b><u>550.1647, F.S.</u></b></p>	<p>A permitholder that has incurred tax on handle and admissions that exceeds its operating earnings is entitled to credit the excess amount of taxes against its next ensuing meets. <b><u>550.09511(1)(b), F.S.</u></b></p> <p>Tax credit each state fiscal year equal to 25% of amount remitted in escheated tickets in prior state fiscal year. Funds equal to the tax credit shall be paid by the permitholder to the National Association of Jai Alai Frontons. <b><u>550.1646, F.S.</u></b></p> <p>\$30,000 per performance exemption if live handle during the preceding state fiscal year was less than \$15 million. <u>This exemption applies to charity performances.</u> <b><u>550.09511(2)(a)1., F.S.</u></b></p> <p>A permitholder conducting fewer than 100 performances in any calendar year shall pay to the state the same aggregate amount of daily license fees on live games, admissions tax, and tax on live handle as that paid during the most recent prior calendar year in which at least 100 live performances were conducted. <b><u>550.09511(4), F.S.</u></b></p>	<p>Permitholders are allowed a credit of up to 1% of the paid taxes for the previous taxable year. The credit, if taken, is applied against taxes on live handle due for a taxable year under this section, and is paid directly to the Jockeys' Guild by the permitholders. <b><u>550.09515(6), F.S.</u></b></p>		

This matrix represents a summary of 2013 Statutes. Please refer to the cite noted by statutory topic for specific language governing pari-mutuel wagering.

STATUTE TOPIC	STATUTE REFERENCE	SUMMARY
<b>FEES</b>		
<b>Cardroom Table Fees</b>	849.086(5)(d), F.S.	Annual fee for each facility is \$1,000 for each table to be operated at the cardroom.
<b>TAXES</b>		
<b>Tax On Cardroom Gross Receipts</b>	849.086(13)(a), F.S.	Each cardroom operator shall pay a tax to the state of 10% of the cardroom operation's monthly gross receipts. Pursuant to Section 849.086(13)(c), F.S., one-half credited to Pari-Mutuel Wagering Trust Fund and one-half being credited to the General Revenue Fund.
<b>Tax On Admissions</b>	849.086(13)(b), F.S.	15% of admission charge, or 10 cents, whichever is greater, for entrance to the cardroom. This tax only applies if a separate admission fee is charged for entry into the cardroom facility. If a single admission fee is charged allowing entry to both or either the pari-mutuel facility and the cardroom facility, the tax is payable only once and shall be payable pursuant to Chapter 550.
<b>FINES</b>		
<b>Administrative Fine</b>	849.086(14)(c), F.S.	An administrative fine up to \$1,000 for each violation may be imposed on any person who has violated or failed to comply with the provisions of Section 849.086, F.S.
<b>ANNUAL DISBURSEMENT TO COUNTIES AND MUNICIPALITIES</b>		
<b>Annual Disbursement To Counties and Municipalities</b>	849.086(13)(h), F.S.	One-quarter of moneys deposited into the Pari-Mutuel Wagering Trust Fund shall, by October 1 of each year, be distributed to the local counties or municipalities where the approved cardrooms are located.

This matrix represents a summary of 2013 Statutes. Please refer to the cite noted by statutory topic for specific language governing operation of cardrooms.

STATUTE TOPIC	STATUTE REFERENCE	SUMMARY
<b>FEES</b>		
<b>Slot License Fee</b>	551.106(1)(a), F.S.	Annual fee for each slot machine facility is \$2 million paid with the initial license application and annual thereafter on the anniversary date of the issuance of the initial license.
<b>Compulsive or Addictive Gambling Prevention Program Fee</b>	551.118(3), F.S.	Annual fee for each slot machine facility is \$250,000 paid at the same time the annual license fee is due, and annual thereafter.
<b>TAXES</b>		
<b>Tax on Slot Revenue</b>	551.106(2)(a) and 551.106(3), F.S.	The tax rate on slot machine revenues is 35%. Payment for the tax on slot machine revenues shall be remitted by 3 p.m. on the 5th day of each calendar month for taxes imposed and collected for the preceding calendar month. If the 5th day of the calendar month falls on a weekend, payments shall be remitted by 3 p.m. the first Monday following the weekend.
<b>FINES</b>		
<b>Failure to Pay Slot Tax Fine</b>	551.106(4), F.S.	Up to \$10,000 for each day tax payment is not remitted timely.
<b>Civil Fine</b>	551.107(11), F.S.	The division may impose a civil fine of up to \$5,000 for each violation of this chapter or the rules of the division.
<b>False Statement Fine</b>	551.109(1), F.S.	Up to a \$10,000 fine or civil penalty for any person who knowingly makes or causes to be made, or aids, assists, or procures another to make a false statement in any report, disclosure, application, or any document required under Chapter 551, or any rule adopted under Chapter 551.
<b>Unauthorized Possession of Slot Machines Fine</b>	551.109(2), F.S.	Up to a \$10,000 administrative fine or civil penalty for any person who possesses a slot machine without the license required by Chapter 551, or who possesses a slot machine at any location other than at the slot machines licensee's facility.
<b>PENALTIES</b>		
<b>Slot Machine Licensee Civil Penalties</b>	551.117, F.S.	Up to a \$100,000 civil penalty for each count or separate offense against the slot machine licensee for violation of Chapter 551, or any rule adopted by the division.

This matrix represents a summary of 2013 Statutes. Please refer to the cite noted by statutory topic for specific language governing slot operations.